

20

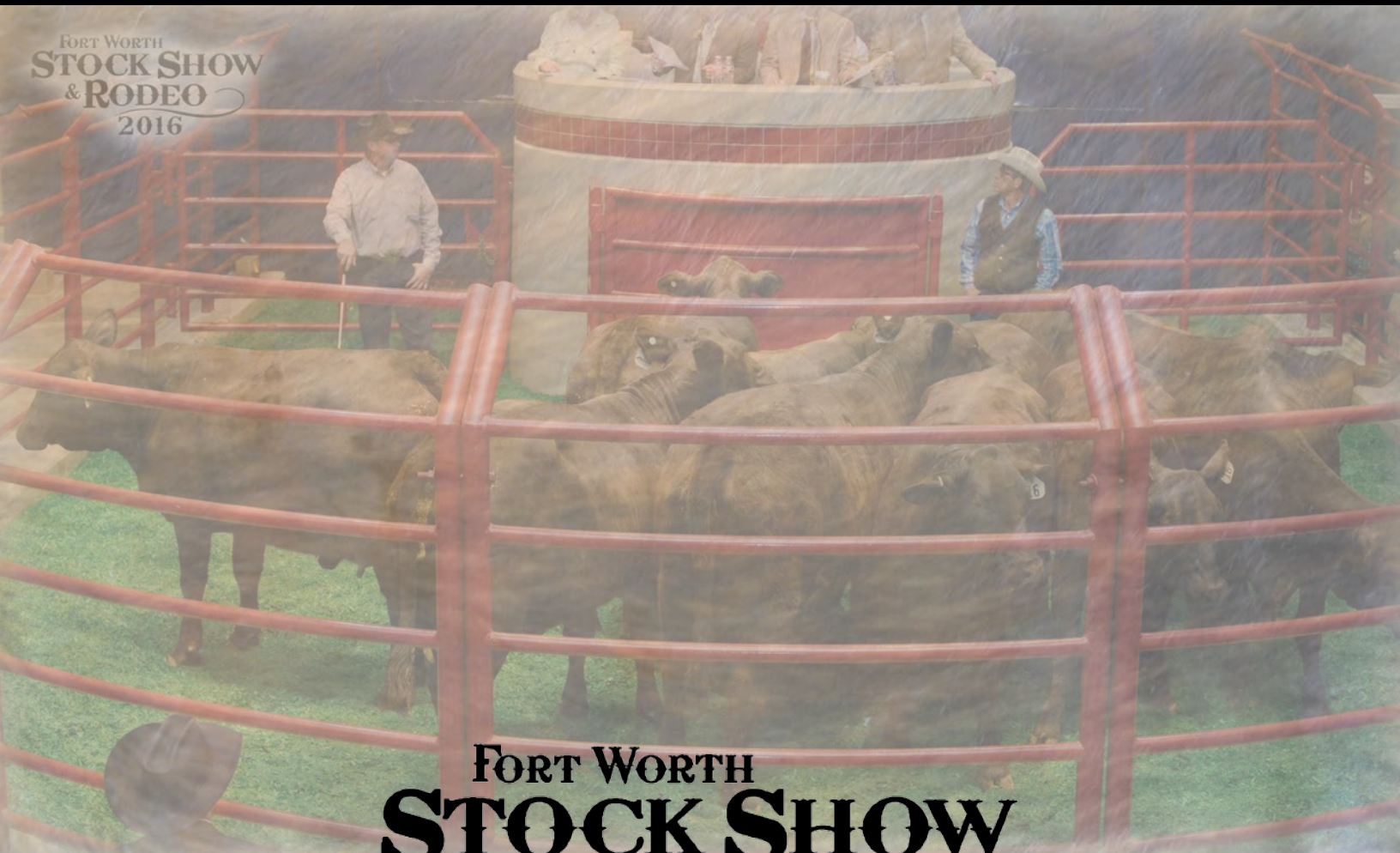
17



FORT WORTH STOCK SHOW
Commercial Heifer Sale

West Arena, Fort Worth Stock Show **SATURDAY, FEBRUARY 4, 2017** 3:30 PM • Fort Worth, TX

FORT WORTH
**STOCK SHOW
 & RODEO**
 2016



FORT WORTH
**STOCK SHOW
 & RODEO**
est. 1896

2016 Champion Pen from Bell Cattle Co.

THIS THING IS LEGENDARY®

BUILDING

LONGSTANDING

RELATIONSHIPS

“It’s a real comfortable fit with Lone Star, they are able to address our needs and concerns and really work closely with us. They know how things are going throughout the year and can accommodate our needs.”

ROLAN PETTY | RR RANCH

Member Since 1982

Visit [LoneStarAgCredit.com](https://www.LoneStarAgCredit.com) to connect with a loan officer near you.

LONE  **STAR**
AG CREDIT

FINANCING YOUR PIECE OF TEXAS

FINANCING FOR: RURAL REAL ESTATE
RURAL HOMES | FARM OR RANCH OPERATIONS
EQUIPMENT | AGRIBUSINESSES
RECREATIONAL PROPERTY





FARMS[®]
SINCE 1909



THE SPRING SALE

SELLING 450 ANGUS BULLS

SATURDAY, FEBRUARY 25 · CAMERON, TX · 11:30AM



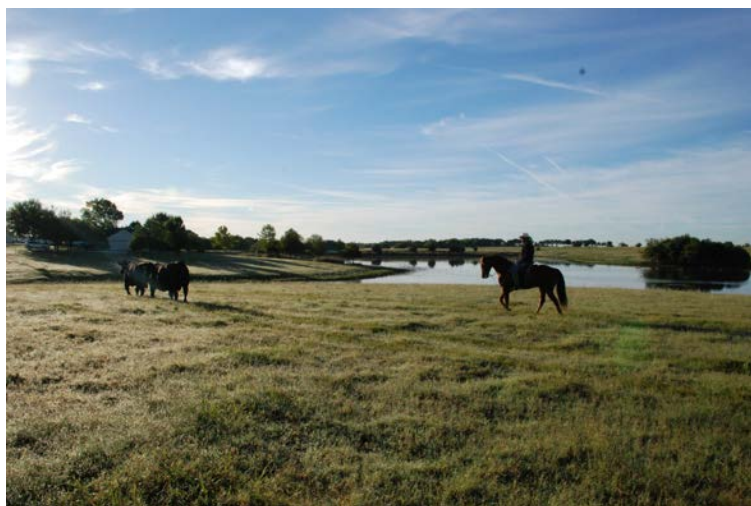
REPLACEMENT BRANGUS HEIFERS

WE OFFER PRIVATE TREATY SALE OF
OUR REPLACEMENT HEIFERS AND
VIDEO SALE OF OUR FEEDER STEERS.





- * **Registered Angus**
- * **Angus x Hereford Crossbred Cattle**
- * **Offering AI & Reproductive**



Bear Creek Farms
P.O. Box 1208 672 CR 5031
Leonard, TX 75452



David Johnson, Owner (214)-415-1857
www.bcfarmstx.com



Sale broadcast live on
www.superiorclicktobid.com
800-431-4452

HOW TO PARTICIPATE AS AN ABSENTEE BUYER

We have made preparations to bid and buy your livestock through Superior Productions' "Call or Click-To-Bid" service for those unable to attend in person on sale day. Please note that all of the lots in the sale will also be available for viewing online prior to sale day at www.superiorlivestock.com.

HERE'S HOW IT WORKS

Turn in Bids Over the Phone. This is our traditional method of buying livestock. To get started simply go online to www.superiorlivestock.com and click on the tab titled "Register for a Buyer Number". Select the registration form for Superior Productions and print the registration form, fill it out and fax it in to Superior Productions at (817) 378-3380 with a signature on it. You can also mail it in to the address provided on the form. Upon receipt of this information Superior will call you with a buyer's number and the bid line phone number that you will use on sale day to place bids over the phone.

Click-To-Bid. This is Superior's newest way to buy livestock! Please note that high speed internet is required – this is not for dial-up or satellite internet. Registration is free, but you must become a member of www.superiorclicktobid.com to sign up. Becoming a member is easy – just go to the homepage of www.superiorclicktobid.com and follow the out-lined steps to get started. Input your information and select a username and password. You will receive an e-mail confirming you are a member. From that point forward you just have to sign in and select the sale you would like to register for and once approved you will receive an e-mail confirming which sale you are now registered for.

Viewing the Auction. The sale will be broadcast live on the internet at www.superiorclicktobid.com – just go to the home page and select the auction. Remember, you can call in to bid over the phone when watching on the internet if you have registered for that service, but you must be a member of www.superiorclicktobid.com to "click-to-bid" and bid online. Your computer must have Flash Media Player installed to view the auction.

Bidders who are successful in making purchases will be contacted by Superior Productions after the sale to settle payment and discover your shipping plans.

Y-TEX IS THE OFFICIAL TAG SUPPLIER OF THE COMMERCIAL HEIFER SALE

ALL YOU NEED IS Y•TEX®

Identification Ear Tags

All-American®, SwineStar®, Lone Star® EZ,
Sheep/GoatStar™, Lone Star® Feedlot,
E-Z-AP™, SwineStar® Max™ and LitterStar®

Insecticide Ear Tags

XP 820® Tags/Strips, PYthon® Magnum™,
PYthon® Tags/Strips, WARRIOR™, OPTimizer®,
and GardStar Plus®

Pour-On and Livestock Sprays

GardStar® 40% EC Livestock & Premise
Insecticide, Brute® Pour-on for Cattle and
Horses, SwineGuard™ Pour-on for Swine,
PYthon® Dust for Livestock and GardStar®
Garden & Poultry Dust.



Superior Value - Proven Performance



Y-TEX Corporation, 1825 Big Horn Ave., Cody, WY 82414
Web: www.ytex.com • E-mail: ytexinfo@ytex.com



FORT WORTH STOCK SHOW

Commercial Heifer Sale

West Arena, Fort Worth Stock Show **SATURDAY, FEBRUARY 4, 2017** 3:30 PM • Fort Worth, TX

2017 SALE TERMS

- Terms of the sale are cash or check payable at the close of the sale and prior to load out unless previous arrangements have been made with the sale manager.
- All cattle will sell in groups as determined by sale manager and they will sell times the money. Example: 10 head @ \$1000 ea. = \$10,000 for the group. All announcements from the block, including the number of head and calves selling in a group, will take precedence over any and all printed material.
- All cattle will have a unique ID number attached to the health paper in accordance with the Texas Animal Health Commission Brucellosis rules and health papers will be available for cattle to travel in the continental U.S.
- Cattle have been veterinary checked and pregnancy information is on each health paper. Sale management does not guarantee the accuracy of this information, it is furnished to the buyer as a guide for approximate calving dates.
- Ownership changes at the time the auctioneer says "Sold". While we do everything possible to insure proper care of the animals after the sale, we do not take responsibility for death or loss of calves.
- All Cattle must be removed from the Stock Show grounds by 5:00 p.m. Sunday February 5, 2017. If this is a problem, please see sale management following the sale. If you need transportation, a list of reliable truckers is recommended on page 20.
- The auctioneer will settle all disputes and his decision will be final.
- Liability - All persons attending this sale do so at their own risk. The consignors, sale management and the Southwestern Exposition assume no liability, legal or otherwise, for accidents or loss of property.
- A strict health protocol has been followed for each pen. For more information, see page 10.



The sale will take place in the West Arena, located in the west end of the Richardson Bass Building. The cattle may be previewed at the southeast corner of the Richardson Bass Building. Trailer Parking is directly east of the Richardson Bass Building across University at Farrington Field.

SALE DAY PHONES: 817-877-2438 OR 817-219-0102

AUCTIONEER Jim Birdwell
CHAIRMAN Phil Stoll
SALE MANAGEMENT
SCHACHER AUCTION SERVICES

Robert Schacher 817-862-7821 • 817-219-0102
 PO Box 33804, Fort Worth, Texas 76162
 Fax 817-862-7823 • rob@schacherauction.com
 www.schacherauction.com
 TDLR Auc. #14028 USDA P&S Reg. #22455



Sale broadcast live on
www.superiorclicktobid.com
 800-431-4452

See page 4 for more information.

SALE STAFF

Ralph Means, Weekly Livestock Reporter
 Delvin Heldermon, Heldermon Marketing
 Deron Heldermon, Marketing Services
 Juston Stelzer, Stelzer Auction Services
 Jay Purchase, Sale Committee
 Shawn McCoy, The Cattleman

SCHACHER AUCTION SERVICES

Robert Schacher 817-219-0102
PO Box 33804, Fort Worth, Texas 76162
r_schacher@msn.com • www.schacherauction.com



Dear Friends and Cattle Producers,

I would like to welcome you to Fort Worth and the 30th Annual Invitational Commercial Heifer Show and Sale.

I am always proud of the effort that our consignors put in to ensure that we have the highest quality replacement heifers to offer to you. I believe that as you inspect the cattle, you will agree that this group exceeds every standard of quality that you could ask, they are all sound, functional cattle that will be a welcome addition to any herd.

I would like to thank all of the sponsors and volunteers that put in so many hours to make this event one of the premier livestock events in the Southwest. I would also like to thank the entire staff of the Southwestern Exposition and Stock Show for their continued support and commitment to this Show and Sale.

All of the females in this sale have received the health protocol that is outlined on page 10 to ensure that you are buying cattle that are healthy and problem free. I would like to thank Boeringer-Ingelheim and Animal Health International for providing these products and for the help distributing these products to our producers.

If you have any questions, please do not hesitate to contact me. I will see you in Fort Worth.

Sincerely,

Robert Schacher

JM Cattle Co.

Gause, Texas

Also look for our cattle
in San Antonio and
Houston.

LOTS 22 & 23

2 sets of 10 - Super Baldie Pairs

The real cattlemen will find these! JM Ranch consistently brings one of the most uniform and impressive sets of cattle that we have in the offering. They are moderate framed, huge ribbed, big topped and have perfect udders. They are sired by Brangus bulls and out of F1 Tigerstripe females. Be sure to pay special attention to the job they are doing on these calves that are sired by Irish bred Angus bulls that make them soggy and heavy muscled. You will get a bigtime pay day with these calves. Don't miss these Ranch-Raised Cow prospects.



Jim McCord - Owner

979-279-5649 • 979-229-1205

Josh Kinslow - Manager

979-589-1149 • 979-574-7914



Building Ranch Traditions for Tomorrow's Generations

Silver Spur Ranches / Bell Ranch Division

2015 Reserve Grand Champion Pen

Jason Eicke

Bell Ranch, New Mexico

806-336-5546

575-868-2207



Decky Spiller

Elbert, Colorado

830-285-6828

dspiller@spurranches.com

Southwestern Exposition Commercial Heifer Sale Scholarship Program

A program that distinguishes the Southwestern Exposition Invitational Commercial Heifer Show and Sale as a very unique event in the Livestock Industry is our Scholarship Program. Annually we award scholarships to high school seniors who plan to seek higher education. The potential recipients are nominated by the ranches that participate in the Show and Sale. Those nominees are awarded the scholarships on the following criteria: 50% is based on financial need; 40% is based on Agricultural involvement and 10% is based on Academics. **Thank you to the following of scholarship sponsors:**


PLAINS CAPITOL BANK AND CHARLES & NORMA ROLLINS
4301 W. FM 5, Aledo, TX
817-441-9388

As the long time sale manager and one of the founders of the Southwestern Exposition Scholarship Program, the Rollins Family proudly sponsors this Scholarship. With PlainsCapital Bank, Charles and Norma Rollins present a scholarship in honor of Charles Dooley and Murl Richardson. PlainsCapital Bank is the official bank of the Southwestern Exposition Commercial Heifer Sale.



THE WEEKLY LIVESTOCK REPORTER
Phil Stoll, Publisher/Editor
P.O. Box 7655, Fort Worth, TX 76111-0655
817-831-3147

The Southwest's oldest livestock newspaper serving cattlemen for the past 117 years. Bringing more news more response.



THE QUINTIN LITTLE COMPANY INC.
Jud Little, President & CEO
P.O. Box 1509, Ardmore, OK 73402
580-226-7600 x 203

Independent oil and gas producers since 1938. "We buy oil and gas leases, minerals and royalties."



HILLWOOD LAND & CATTLE
Mark Baker, Manager
13600 Heritage Parkway #200, Fort Worth, TX 76177
817-454-9398 or 817-430-2305

Producing proven quality ranch raised Brangus cattle. Our cows are bred to hand-picked Steiner Bulls. We offer private treaty sale of our replacement heifers and video sale of our feeder steers. We support the future of young cattlemen through the Southwestern Exposition Commercial Heifer Sale Scholarship Program.



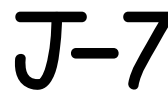
ELANCO
Terri Barber
7404 Waldon Dr., Austin, TX 78750
817-727-6107 • tbarber@elanco.com

Get the Elanco edge for your program. We proudly make Rumensin 90 and component implants with Tylan and Standguard.



DIANE MCFARLAND CORNWALL MEMORIAL SCHOLARSHIP

Sponsored by the Cornwall Brothers in memory of Diane McFarland Cornwall.



J-7 RANCHES
Johnny T.L. Jones
Box 149, Quanah, TX 79259
325-721-1846

J Bar 7 Ranches is known throughout the US as a top quality breeder and supplier of Purebred and Commercial Seedstock Cattle, as well as the finest Quality Thoroughbred Racing Horses.



ABS
Roger Wann
District Business Manager, Lindsey, TX
940-727-8492,

ABS offers reliable, high accuracy genetics combined with expert support at less cost than buying bulls. Turn to ABS Professionals when making breeding decisions for your heifers.

RIDDLE RANCH

Scott Riddle
P.O. Box 8802, Waco, TX 76714
800-722-5157

Riddle Ranch supports the dreams of deserving young men and women in the Southwestern Exposition Commercial Heifer Sale College Scholarship Program.



PHD RANCHES

PHD Ranches is a family owned and operated cattle ranch with units in Texas and Oklahoma. They breed home raised Red Angus heifers and Black Angus Heifers that are selected for maternal ability, carcass merit and docility. Their long and deep body reflects the characteristics of a good set of brood cows. PHD uses the highest quality genetic bulls for their breeding operations. They select for moderate frame, easy fleshing and good milk which adds a lot of longevity to their program. Along with their Heifer operations, PHD participates in the IMI Global NHTC/All Natural steer feedlot program. Their most recent carcass data reported 21.5% Prime and 78.5% Choice. They would like to congratulate the scholarship winners for 2017 and appreciate being a part of their future education.



FORT WORTH STOCK SHOW
Commercial Heifer Sale

FORT WORTH COMMERCIAL HEIFER SALE

The Fort Worth Commercial Heifer Sale is honored to award one of our scholarships in the memory of Kris Wilson, A true friend to ranchers everywhere. We will miss you.

Sponsors



LONE STAR AG CREDIT

Julie Porter Mayfield
1612 Summit Ave. Suite 300
Fort Worth, TX 76102
817-332-6565 or 800-530-1252

Since 1917, Lone Star Ag Credit has assured their borrowers competitive interest rates on real estate loans, rural home loans, livestock, farm & ranch loans. Visit us on the web at www.LoneStarAgCredit.com or give us a call at 800-530-1252. Let Lone Star Ag Credit help you finance your piece of Texas.



SOUTHWESTERN EXPOSITION & LIVESTOCK SHOW

Brad Barnes
P.O. Box 150
Fort Worth, TX 76101
817-877-2400

Carrying a proud tradition of livestock competition into its 117th year.



BOEHRINGER INGELHEIM VETMEDICA INC.

Mike Mustian, Inc.
123 Windriver Court
Weatherford, TX 76088
254-595-0034-Cell

Boehringer Ingelheim Vetmedica Inc. is a family owned and operated business dedicated to delivering high quality, innovation products to the cattle industry. The extensive product line includes such brand names as: Express Family of Vaccines, Pyramid Family of Vaccines, Triangle Family of Vaccines, Presponce HM, Presponce SQ, Bio Mycin 200, Alpha 7/MB-1, Bar Vac 7, Bar Vac 7/Som, Caliber 7, and Trich Guard Vaccines.



T-BONE'S CUSTOM CREATIONS

Travis Payne, Owner
1237 Pecan St., Bonham, TX 75418
903-640-6484

Specializing in quality handmade knives, including one of a kind castrating knives. All types of unique western décor ranging from horseshoe wall crosses to lamps and mirrors.



TEXAS SOUTHWESTERN CATTLE RAISERS ASSOCIATION

Stacy Fox
1301 West Seventh St. Suite 201
Fort Worth, TX 76102
800-242-7820

TSCRA is a 139 year old trade association and is the largest and oldest livestock organization based in Texas. TSCRA has more than 16,000 beef cattle operations, ranching families, and business members. These members represent approximately 50,000 individuals directly involved in ranching and beef production who manage 4 million head of cattle on 76 million acres of range and pasture land primarily in Texas and Oklahoma, but throughout the southwest.



PURINA ANIMAL NUTRITION

Dr. Doug Hawkins
4441 South Nolan River Road
Cleburne, TX 76033
817-307-6872

Purina Animal Nutrition has been a leader in animal nutrition for over 110 years by adding value to the livestock industry. Purina has a full line of value added products such as Precon Starter, Accuration Starter, Accuration Cattle Limiters, Accuration Forage Extenders, Accuration Range Liquid, Sup-R-Lix, Sup-R-Blocks and Wind and Rain Minerals.



NUTRITION PLUS

888-655-7587
www.nutritionplus.biz

Nutrition Plus is an American owned and operated company that provides a full line of quality livestock minerals and other nutrition supplements. We are dedicated to providing our customers with the best products and services in the industry, offering the best nutrition for your cattle (cow/calf, stocker, feedlot), horses, sheep and goats. "Branded For Quality" is not just a phrase but a philosophy of commitment in all that we do.



Y-TEX CORPORATION

Rodney Kindred
3273 Privilege Creek Rd.
Pipe Creek, TX 78063

Y-Tex Corporation is an American company dedicated to the livestock industry. Y-Tex offers the best animal health identification, pest control and animal delivery system products in the industry. Y-Tex are the makers of the All American, Lone Star and E-Z Ap livestock identification tags, along with the new RFID electronic ear tag system.



RED CHAIN FEEDS

Gorman Milling
1905 North Main St.
254-734-2252

Texas Watts Line: 800-588-2252

Gorman Milling Co. Inc. located in Gorman Texas, has been providing quality Red Chain brand livestock feed and supplements to Texas Ranchers for over 40 years and is proud to be a continued supporter of the Southwestern Exposition Commercial Heifer Sale.

AMERICAN BRAHMAN BREEDERS ASSOCIATION

Chris Shivers, Executive Vice President
3003 South Loop West, Suite 520
Houston, TX 77054
713-349-0854

Sponsoring the Southwestern Exposition Commercial Heifer Sale through added premiums on cattle enrolled in our Certified/Golden Certified and the top ranking F-1 Plus pens.



INDEPENDENT CATTLEMEN'S ASSOCIATION OF TEXAS

Bill Hyman, Executive Director
Box 1168

Lockhart, TX 78644

512-620-0162, Email: tica@icatexas.com

Website: www.icatexas.com

With so many new laws and regulations being brought forth daily, it is vital for Cattlemen to have Representation in the halls of both the State and National Capitols and that is where we come in. Being Cattlemen ourselves, we're devoted to the cause. Our job is to help government officials understand the cattle industry and what we do as producers. We advocate for the rights of Texas Cattlemen with our main priority being to make your voice heard. ICA Stands for and believes in the family values you grew up with and raised your own family around. We understand that raising cattle is not just a job, but a way of life! We strive everyday to preserve our way of life.



ANIMAL HEALTH INTERNATIONAL INC.

Lana Dill
8857 S. US Hwy 377
Dublin, TX 76446
254-965-7964

lana.dill@animalhealthinternational.com

Animal Health International has merged two great companies, Walco International and Lextron Animal Health together to better serve the professional animal health industry as a committed distributor. Our goal is to provide excellent customer service striving to improve your herd protection and profitability.

SOUTHWESTERN EXPOSITION COMMERCIAL HEIFER SALE ANIMAL HEALTH INFORMATION

Boeringer-Ingelheim and Animal Health International have provided the following vaccines and parasite control to ensure that the animals that you purchase from the Southwestern Exposition Invitational Commercial Heifer Sale are healthy and ready to turn out. Be sure to talk to the representatives of Boeringer-Ingelheim and Animal Health International to develop a plan to keep your herd disease free.

TRIANGLE 5 killed viral vaccine is used to aid in prevention of a number of diseases. Because it is a killed virus vaccine, Triangle is flexible and easy to use in cattle of all ages and stages of production. Triangle contains killed viruses of BVD Types 1 and 2, infectious bovine rhinotracheitis (IBR), bovine respiratory syncytial virus (BRSV) and parainfluenza-3 (PI3),

CITADEL VL5 provides protection against five major *Leptospira* serovars, including defense against urinary shedding of *Leptospira borgpetersenii* serovar hardjo (type hardjo-bovis) – the serovar primarily responsible for chronic infections. CITADEL VL5 has the added benefit of helping protect against infertility, delayed conception, or abortion caused by *Campylobacter fetus*.

CALIBER-7 vaccines are available as a way to protect against blackleg, enterotoxemia, and other clostridial pathogens.

CYDECTIN (moxidectin) offers a persistent kill of internal parasites at multiple stages, including the most economically damaging parasite, *Ostertagia ostertagi* (brown stomach worm). Controls external parasites including lice, grubs, psoroptic (scabies) and chloriopic (tail-head) mange mites. Little to no impact on beneficial dung beetle populations



Nutrition Plus is an American owned and operated company that provides a full line of quality livestock minerals and other nutrition supplements. We are dedicated to providing our customers with the best products and services in the industry, offering the best nutrition for your cattle (cow/calf, stocker, feedlot), horses, sheep and goats. "Branded For Quality" is not just a phrase but a philosophy of commitment in all that we do.

Branded For Quality is the standard for which Nutrition Plus strives every day to fulfill. This standard is achieved by providing quality products with quality results! Relationships are the benchmark of our successes both past and future. We invite you to be a part of our journey!

Harry Hudgins 903-821-1490
888-655-7587 • www.nutritionplus.biz



**“Seven generations
of cattlemen,
and not one of
them ever
considered cattle
health *optional*.”**

— **Dennis Carlton,**
Carlton & Carlton Ranch

PREVENTION WORKS.



Coming from a long line of cattlemen, Dennis Carlton knows he needs a vaccine he can trust with his herd, his business and his very livelihood. “Keep the cattle healthy, and the whole operation thrives,” he says. With its long-standing reputation for reliability and proven performance against key respiratory and reproductive diseases, Carlton trusts Triangle® to be the lead vaccine for his herd. Put trust in TRIANGLE for your herd, too.

To see a video about Carlton & Carlton Ranch,
visit TriangleVaccines.com.

TRIANGLE®

Quality Handmade Knives
Custom Laser Engraving

T-Bone's
Custom
Creations
& Laser Engraving

Cody & Aimee
Sanders
Est. 9-15-12

(903) 640-6484

www.tbonescustomcreations.com

RED CHAIN FEEDS

THE BRAND TO TRUST.

With over 45 years of operation, we have the experience and the expertise to create the perfect feeding solution for your cattle operation. We offer a diverse group of high quality feeds and have the ability to custom formulate feeds to fit your specific needs.

REDCHAINFEEDS.COM

GORMAN MILLING COMPANY, INC
Gorman, Texas | (800) 588-2252

Southwestern Exposition Commercial Heifer Sale Consignors

44 FARMS

Cameron, TX
979-451-2003
Lot 36

4F CATTLE COMPANY

Whitesboro, TX
903-718-0788
Lot 2

4J FAMILY PARTNERSHIP

Parker, TX
972-965-6444
Lot 51

BEAR CREEK FARMS

Leonard, TX
214-415-1857
Lot 41

BELLAH CATTLE CO

Throckmorton, TX
940-864-4053
Lot 37

BELL CATTLE COMPANY

Gainsville, TX
940-736-5502
Lot 6

BELL RANCH/SILVER SPUR

Salano, NM
830-285-6828 or 575-868-2207 or
806-336-5546
Lots 47-49

BRADSHAW CATTLE CO.

Piedmont, OK
405-684-7466
Lot 46

CAVENDER RANCH

Jacksonville, TX
903-521-1070
Lots 12, 13

CIRCLE T/HILLWOOD

Fort Worth, TX
817-454-9398
Lots 14, 15, 30

CHRIS COCKRELL

Clifton, TX
254-248-4695
Lot 11

COLLIERS DIAMOND C

Stephenville, TX
817-832-5838
Lots 28, 38

D BAR B CATTLE COMPANY

Aledo, TX
817-441-8785
Lot 24

DIAMOND H CATTLE

Brenham, TX
979-277-5082
Lot 1

WADE AND HALLIE FOOTE

Gatesville, TX
254-258-4241
Lot 3

FRYER CATTLE COMPANY

Chatanooga, OK
580-335-1345
Lot 52

GRISWOLD CATTLE

Stillwater, OK
405-780-3300 or 405-564-4319 Craig Sand
Lots 54-60

HILLERY CATTLE RANCH

Wichita Falls, TX
940-636-4553
Lot 33

HODDE LAND & CATTLE

Brenham, TX
979-836-2234
Lot 16

ICE CATTLE COMPANY

St. Joe, TX
940-727-9611
Lots 39, 40

J BAR 7 RANCH LLC

Quanah, TX
325-721-1846
Lots 29, 43

JM CATTLE COMPANY

Gause, TX
979-574-7914
Lots 22, 23

JUD LITTLE RANCH

Ardmore, OK
580-226-7600 Ext 203
Lots 4, 5

LEGENDS CATTLE COMPANY

Emory, TX
817-368-6531
Lot 7

MAV GROUP LLC

LaGrange, TX
830-279-8227
Lots 10, 21

MK RANCH

Era, TX
940-736-5502
Lots 17, 18

MORRISON RANCH

Paradise, TX
940-389-4519
Lots 19, 20

NEUNDORF CATTLE

Edmond, OK
405-740-5490
Lot 53

PHD RANCHES LLC

Saginaw, OK
940-293-7767
Lots 35, 42

REED RANCH

Millsap, TX
406-599-1086
Lots 8, 34

ROCKER O RANCH LLC

Gainsville, TX
940-736-1087
Lot 9

SANDERS & SONS

Clifton, TX
254-386-6411
Lot 32

SPANN RANCH

Decatur, TX
940-577-9738
Lots 44, 45

SPEARS & WHITE CATTLE

Vernon, TX
940-886-7488
Lot 31

STANFORD SISTERS ANGUS

Clifton, TX
254-326-8710
Lot 27

S & W CATTLE COMPANY

Nevada, TX
214-502-2413
Lot 25

TOP LINE CATTLE LLC

Bridgeport, TX
817-247-8011
Lot 50

TWO IGO

Plainview, TX
806-774-8535
Lot 26

F1 Tigerstripes/Brangus

DIAMOND H CATTLE

Brenham, TX
979-277-5082



1 10 Golden Certified F1 Heavy Bred Tiger Stripe Heifers

8+ Months Safe in calf to 44 Farms Angus Bulls

Heifers are out of Registered Brahman Cows and Sired by a Registered Hereford Bull. Diamond H Ranch always sorts a great set to bring to Fort Worth, and these may be their best set yet. They are big bodied, powerful females that are very maternal and will have great udders. They are heavy bred to a 44 Farms Angus Bull for easy calving and rapid growth with some calves already on the ground. You can tie in to these proven female with confidence from one of our longtime consignors.

4F CATTLE COMPANY

Whitesboro, TX
903-718-0788



2 10 F1 Tigerstripe Heavy Bred Heifers

A.I. bred to calving ease Angus on 5/15/16. P.E. to Low Birth-weight Angus Bull.

This is a very uniform set of big, stout heifers that are a deep red with bold stripes, they are very eye catching, and look great together. They are sired by Hereford bulls and out of Brahman cows. They were all A.I. Bred to Low Birthweight Angus Bull on 5/15/16 and cleaned up for 60 days with a registered Angus bull from Rocky Springs Ranch Company. Set your sights in on this new consignor as these heifers will definitely stir your interest.

WADE AND HALLIE FOOTE

Gatesville, TX
254-258-4241



3 10 Heavy Bred Tigerstripes/Red Superbaldies

6-7 Months Safe in calf to Calving Ease Peacock Red Angus Bulls

The calves on these heifers will be very impressive being sired by the heavy muscled big ribbed Peacock Ranch Red Angus Bulls, you will certainly want to keep all the heifers that they produce. These heifers are very docile and in perfect condition. They are big bodied, big footed heifers that will be producers for years to come.

JUD LITTLE RANCH

Ardmore, OK
580-226-7600 Ext 203



5 12 F1 Tigerstipe 3-n-1 pairs

September/October calves by 44 Farms Angus Bulls. Exposed 11/26/16 to 2/1/17 to 44 Farms Angus Bulls.

4 12 F1 Tigerstipe 3-n-1 pairs

September/October calves by 44 Farms Angus Bulls. Exposed 11/26/16 to 2/1/17 to 44 Farms Angus Bulls.

Jud Little Ranch is once again bringing you a set of Big, Powerful set of cattle that will be worry free. They are out of Registered Hereford cows and all are sired by V8 Grey Brahman Bulls. They have their first calves at side and they all have flawless udders. The calves at the side of these female will make your trip to Fort Worth worthwhile, they are big and stout and will scale up big-time when you are ready to market them. You cannot go wrong with these heifers from long time consignor Jud Little Ranch.

BELL CATTLE COMPANY

Gainsville, TX
940-736-5502



6 10 Heavy Bred Brangus Heifers

8+ Months safe in calf to Calving Ease Brangus Bulls

These heifers are the mates to last year's Grand Champion Overall Pen. Coming to you from Dale Bell who is one of the longest consignors to Fort Worth, and he always sorts a nice uniform set. These are big 1,200 lb heifers that have lots of depth, rib and muscle. There are already some calves on the ground, and the udders look great on these big-time producers.

LEGENDS CATTLE COMPANY

Emory, TX
817-368-6531



7 10 – Heavy Bred Brangus X Angus Heifers

A.I. Bred to Bradley 3 Elector Y162, 8 months safe in calf – Female Sexed Semen

These heifers are selected from among the best in Legends Cattle Company's herd (Formerly Garrett Brangus). They are a sound and very maternal appearing set of heifers that are sired by Angus bulls and out of Brangus Cows. They were all A.I. Bred to B3R Elector Y162 who features a calving ease EPD of 21 and a negative birth weight to start calving March 1. These are the kind you can build your herd on with proven genetics to thrive in the pasture.

REED RANCH

Milsap, TX
406-599-1086



8 12 Brangus Heavy Bred Heifers

5-7 months safe in calf to Express Genetics Angus Bulls

Big and stout heifers that are 20-months-old and weighing 900 lbs. They are in great condition and ready for turnout.

ROCKER O RANCH LLC

Gainsville, TX
940-736-1087



9 10 Brangus X Maine Bred Heifers

Safe in calf to Express Angus Upshot Son

Rocker O Ranch made a splash with these heifers in their first time at Fort Worth last year. If you like deep, big bodied females that have a very feminine, eye-appealing front end this is a set of heifers that you will need to find. They are sired by Jirl Buck Maine Anjou Bulls and out of a perfect uddered set of Brangus Cows. They are heavy bred to an Express Ranch Upshot son that features a 1.1 EPD for Birth Weight for easy calving, but maintains over a 100 EPD for Yearling EPD for fast growth. They will begin calving on March 1 and have a 60 day calving window.

Brangus/SuperBaldies

MAV GROUP LLC

LaGrange, TX
830-279-8227



10 10 Brangus Spring Calving Heifers

5+ months Safe in calf to Calving Ease Angus Bulls

Mav Group will be making their first appearance in Fort Worth with a fancy set of range raised Brangus heifers that will calve in the spring to Low Birth Weight Angus Bulls. These heifers are ready for grass and very tolerant to heat.

CHRIS COCKRELL

Clifton, TX
254-248-4695



11 12 Heavy Bred Brangus Heifers

8+ Months safe in calf to Peacock red Angus calving ease bull.

Cockrell Ranch is a first time consignor to Fort Worth that is coming with a set of Moderate framed very productive Brangus heifers. They have been raised on range country and are in turn out condition. We have a few calves on the ground and they are coming with no problems.

CAVENDER RANCH

Jacksonville, TX
903-521-1070



12 12 Heavy Bred Brangus Heifers

8+ months safe in calf to Low Birth Weight GENETRUST Bull.

13 12 Heavy Bred Brangus Heifers

8+ months safe in calf to Low Birth Weight GENETRUST Bull.

This is a premium, ranch raised, one iron set of well balanced Brangus heifers that are as well matched as any you will see. These heifers come from proven dependable GENETRUST genetics from one of the most well known Brangus breeders in the Nation. Big bodied, powerful muscle and they stand on a big bone structure. Many of these should have calves at side by sale day sired by GENETRUST bulls.

CIRCLE T/HILLWOOD

Fort Worth, TX
817-454-9398



14 12 Heavy Bred Brangus Heifers

7 to 9 Months safe in calf to Steiner Ranch Brangus Bulls

This is a strong set of Brangus heifers that are mates to the 2010 and 2012 Grand Champions and have been Champion or Reserve in this Division for the past six years. They have Steiner Ranch genetics deep into their bloodlines. Very uniform and very stout these heifers are safe in calf to a Low Birth Weight Steiner Ranch Brangus Bull to start calving February 10.

15 12 Brangus Pairs

65 day-old calves by Steiner Ranch Brangus Bulls

These are the early calving mates to lot 14 that have been Grand Champion pen overall in 2010 and 2012 and making a charge for 2017. Stout made and perfect udders on these calf raisers that are rich with Steiner Ranch genetics on both sides of the pedigree.

HODDE LAND & CATTLE

Brenham, TX
979-836-2234



16 10 Brangus Pairs

70 day-old calves by 44 Farms Bulls. Exposed to 44 Farms bull, 45 days safe in calf.

You know what to expect from Hodde Land and Cattle, Big bodied, powerful females with a lot of rib and volume. They are very maternal with a very nice udder develop and plenty of milk flow to raise the 44 Farms Sired Calves at side. All the work is done here and these calves will mash the scales down at weaning. Hodde always sorts some of their best for Fort Worth.

MK RANCH

Era, TX
940-736-5502



17 10 Heavy Bred SuperBaldie Heifers

7-8 months safe in calf to calving ease Angus Bulls

18 10 Heavy Bred SuperBaldie Heifers

7-8 months safe in calf to calving ease Angus Bulls

MK Ranch Bring the kind that can win it every year. These are out of Hereford Cows and Sired by top end Brangus bulls, and these heifers will be sorted into perfect groups. They are very eye-catching and very maternal. They are big bodied and big boned with plenty of volume. These have years of breeding behind them so buy with confidence. They are way along safe in calf to proven calving ease Angus bulls.

SuperBaldies/Angus

MORRISON RANCH

Paradise, TX
940-389-4519



19 10 Heavy Bred SuperBaldie Heifers

5-7 Months safe in calf to calving ease Corriente Bulls

20 10 Heavy Bred SuperBaldie Heifers

5-7 Months safe in calf to calving ease Corriente Bulls

With just a touch of ear in these females, they make the kind that can adapt to any environment. They are all one-half sisters so they will be very uniform and very eye-appealing. This will be the first time for Morrison Ranch in Fort Worth, but look for good things from these Ranch-Raised females. The Corriente bulls they are bred to will insure no calving issues.

MAV GROUP LLC

LaGrange, TX
830-279-8227



21 10 Brangus Spring Calving Heifers

5+ months Safe in calf to Calving Ease Angus Bulls

Mav Group will be making their first appearance in Fort Worth with a fancy set of range raised Brangus heifers that will calve in the spring to Low Birth Weight Angus Bulls. These heifers are ready for grass and very tolerant to heat.

JM CATTLE COMPANY

Gause, TX
979-574-7914



22 10 SuperBaldie Pairs

2 to 4-month-old calves at side by Irish bred Angus Bulls

23 10 SuperBaldie Pairs

2 to 4-month-old calves at side by Irish bred Angus Bulls

The real cattlemen will find these! JM Ranch consistently brings one of the most uniform and impressive sets of cattle that we have in the offering. They are moderate framed, huge ribbed, big topped and have perfect udders. They are sired by Brangus bulls and out of F1 Tigerstripe females. Be sure to pay special attention to the job they are doing on these calves that are sired by Irish bred Angus bulls that make them soggy and heavy muscled. You will get a bigtime pay day with these calves. Don't miss these Ranch-Raised Cow prospects.

D BAR B CATTLE COMPANY

Aledo, TX
817-441-8785



24 10 Certified F1+ Super Baldie Pairs

4 month-old calves at side by GAR Sunrise 7572 (Angus)

Powerful, heavy boned set of Super Baldie heifers, Certified F1+ out of Golden Certified Braford females sired by Gardiner Angus bulls with calves at side by GAR Sunrise 7572. They have been pasture exposed from December 15 to GAR Sunrise 7582. They are very gentle, and easy handling. Don't miss these special Ladies!!

S & W CATTLE COMPANY

Nevada, TX
214-502-2413



25 12 SuperBaldie Pairs

30 day old calves by Calving Ease Angus Bulls

These pairs are solid females that are in the perfect condition. They are well bred females that are sired by W4 Ranch Bulls and out of Registered Brangus Cows. These are Ranch type females that are long and smooth made and have a great udder set. The calves at side are sired by Angus Bulls with Northern Pedigrees to add growth.

TWO IGO

Plainview, TX
806-774-8535



26 12 Heavy Bred Angus Heifers

A.I. Bred to Connealy Comrade 1385

Select female heifers were chosen from our home raised 2015 heifer crop. These heifers were AI'd 05/06/16 to Connealy Comrade 1385, who features a negative 3.5 birthweight EPD and a +17 calving ease score. These heifers were chosen from our cows that are cake fed, docile, good milking, and good mothering.

STANFORD SISTERS ANGUS

Clifton, TX
254-326-8710



27 10 Fall Calving Angus Heifers

90 days safe in calf to Hoover Dam son

Heifers are sired from Olsen raised Consensus registered Angus bulls and bred back to low birth weight Hoover Dam Bull raised by Stanford Sisters Angus. Heifers are September calves bred back to calve in October. Heifers are deep ribbed and gentle in the pens. Heifers have all been raised by Stanford Sisters Angus from birth from Commercial Angus. All very uniform and ready for pasture.

COLLIERS DIAMOND C

Stephenville, TX
817-832-5838



28 10 Fall Calving Angus Heifers

60-90 days safe in calf to calving ease Angus son of Final Product Red Gene Carrier

Collier's Diamond C has been known for quality genetics and unique cattle. These young heifers are very maternal and eye-appealing. They are safe in calf for Fall Calves to a Final Product calving ease son that features outstanding data for growth.

SANDERS & SONS

Clifton, TX
254-386-6411



32 11 Heavy Bred Angus Heifers

8+ months safe in calf to 44 Total 4415 (44 Farms Angus)

This is a nice, uniform set of heifers that have volume, depth and length of body. These heifers are in perfect condition for calving and there are some on the ground already. The ones that have calved are making excellent mothers with big udders and plenty of milk flow.

J BAR 7 RANCH LLC

Quanah, TX
325-721-1846



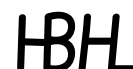
29 10 Angus Heavy Bred Heifers

A.I. Bred to Boyd Resume 5/18/2016. Pasture Exposed to Calving Ease Brangus Bull.

J Bar 7 Ranch is known throughout the country for quality livestock, and they bring high quality and consistent heifers to Fort Worth. They are Powerful, deep bodied and eye-appealing. A.I. Bred to proven calving ease Angus bull Boyd Resume' 9008 to start calving February 25 then cleaned up with a Calving Ease Brangus Bull.

HILLERY CATTLE RANCH

Wichita Falls, TX
940-636-4553



33 12 Home Raised, Heavy Bred Angus Heifers

8+ Monthst safe in calf to Hillery Angus Bulls

Heifers that were bred and raised with the intent to keep in our herd as replacements. They are raised in a high yearling weight program and bred back to Low Birth Weight Angus Bull. We have several years of experience with the dams and have not had any troubles, and the steer mate buyers keep coming back. These heavy bred heifers will have some calves by sale day. Cattle are run on big grass country in Southwest Oklahoma and Northwest Texas.

CIRCLE T/HILLWOOD

Fort Worth, TX
817-454-9398



30 12 Heavy Bred Angus Heifers

7-9 Months Bred to Calving Ease Angus Bulls

Ranching in Stephenville since 1939, the Collier's Diamond C Ranch has been known for quality genetics and unique cattle. These are young and very maternal and are safe in calf for fall calving to calving ease son of Final Product that also feature outstanding data for growth.

REED RANCH

Milsap, TX
406-599-1086



34 12 Angus Heavy Bred Heifers

5-7 months safe in calf to Express Genetics Angus Bulls

Big and stout heifers that are 20-months-old and weighing 900 lbs. They are in great condition and ready for turnout.

SPEARS & WHITE CATTLE

Vernon, TX
940-886-7488



31 12 Fall calving Angus Bred Heifers

2-3 Months safe in calf to RA Brown Red Angus Bulls

These heifers have years of RA Brown Ranch genetics behind them and they are very performance oriented. The Spears and White consignment are always some of our most consistent heifers that are Ranch Raised and in the perfect condition to go to grass. They have good length of body and plenty of bone and a great structure. They are safe in calf to RA Brown Red Angus Bulls: Brown CH Trilogy C5368, Brown DRA Ultimate C5596 and Brown Rice Redemption C5567 to start calving August 15.

PHD RANCHES LLC

Saginaw, OK
940-293-7767



35 10-Heavy Bred Angus Heifers

A.I. bred 6/6/2016 to Connealy Contractor

PHD Ranches is offering a very nice set of home raised Black Angus Heifers that have been selected for maternal ability, carcass merit and docility. Their long and deep body reflects the characteristics of a good set of brood cows. Synchronized and A.I. Bred June 6, 2016 to Connealy Contractor with an estimated calving date of March 15

Angus Pairs/Black Baldies/Red Angus

44 FARMS
Cameron, TX
979-451-2003

44

36 10 Angus Pairs (Potential 3-N-1's)

3-month-old calves by 44 Farms Angus bulls. A.I. Bred 12/1/2016 to VAR Discovery.

Here are the mates to the 2015 Grand Champion pen. These heifers come from one of the largest and most respected seedstock operations in the nation, and these are perfect representation of the production and carcass merit of the purebred herd. These are big bodied females with a lot of width and muscle, yet maintain a feminine look with perfect udders. The A.I. Sired calves at side will knock your eyes out with their size and performance.

BELLAH CATTLE CO
Throckmorton, TX
940-864-4053

B

37 10 Angus Pairs (Potential 3-N-1's)

Nov.-Dec. calves at side by RA Brown Angus Bulls. Exposed to RA Brown Ranch Bulls 12/20/16 to 2/1/2017.

These very functional Angus Heifers have perfect udders to go along with their very broody, maternal look. They are square hipped, big boned and big ribbed. The calves at side are by R.A. Brown Ranch Angus bulls and will be the top rationing calves in any herd at weaning. Heifers are exposed to R.A. Brown Angus Bulls from 12/20/2016 to 2/1/2017 so many of these females will be safe in calf with their second calf. These are problem free cattle from ranchers involved in every phase of the cattle business.

COLLIERS DIAMOND C
Stephenville, TX
817-832-5838

C

38 10 Angus Pairs (Potential 3-N-1's)

October Calves by Angus sons of Hoover Dam, Upshot and Long Distance. Exposed to a Black Angus Brilliance son with a Red Gene.

Heifers from the heart of the Collier Diamond C ranch program that has been Ranching in Stephenville since 1939. Heifers have big stout calves by sons of the best bulls in the Angus breed for growth and performance. Very maternal, beautifully made females that are big time maternal.

ICE CATTLE COMPANY
St. Joe, TX
940-727-9611

D-

39 10 Heavy Bred Black Baldie Heifers

A.I. Bred to Brown JYJ Redemption 1334

40 10 Heavy Bred Black Baldie Heifers

A.I. Bred to Brown JYJ Redemption 1334

These heifers are out of Express Ranch Angus cows and sired by Legacy Hills Ranch Horned Hereford Bulls. They are big volume and deep ribbed with huge tops. They have great bone and structure and they are very uniform. A.I. Bred to Red Angus calving ease specialist Brown JYJ Redemption 1334.

BEAR CREEK FARMS
Leonard, TX
214-415-1857

FB

41 10 Black Baldie Pairs

January A.I. sired calves by Connealy Premium Product

Bear Creek Ranch will be making their first trip to Fort Worth in 2017, but do not be surprised if they win this Division as the mates to these recently were named champion pen at the North Texas Replacement Sale in November. The heifers are out of registered Hereford Cows and A.I. sired by the top Angus bulls. You will not find a better set of udders with this kind of milk flow, they are big time calf raisers. They are big, long and deep bodied heifers that have an incredible maternal look and a very feminine front end. You should make the extra effort to find these in the pens.

PHD RANCHES LLC
Saginaw, OK
940-293-7767

H

42 10-Heavy Bred Red Angus

A.I. Bred 6/6/2016 to Brown BLW Legend

PHD Ranches is offering a very nice set of home raised Red Angus Heifers that have been selected for maternal ability, carcass merit and docility. Their long and deep body reflects the characteristics of a good set of brood cows. Synchronized and A.I. Bred to Brown BLW Legend and cleaned up by LBW sons of Nebula P707 for 60 days with an estimated calving date of March 15

J BAR 7 RANCH LLC
Quanah, TX
325-721-1846

J-7

43 10 Heavy Bred Red Angus Heifers

A.I. Bred 5/18/2016 to Brown JYJ Redemption. Pasture Exposed to Calving Ease Red Angus Bull.

This is a nice Uniform set of Red Angus heifers from J-7 Ranch that are bred to be great mothers. Moderate framed, big footed and perfect structure. They were A.I. Bred to Redemption who has a -5.1 BW EPD and a +17 for Calving ease but does not sacrifice any growth having a 119 for Yearling Weight. You will love the quality that J Bar 7 brings every year.

Red Angus/LimFlex/SimAngus/MaineAngus

SPANN RANCH

Decatur, TX
940-577-9738



44 10 Red Angus spring Bred heifers

4-5 months safe in calf to Joe Dean Angus Bulls

45 10 Red Angus spring Bred heifers

4-5 months safe in calf to Joe Dean Angus Bulls

A very nice made, moderate framed set of Red Angus heifers from first time consignor Spann Ranches. They are long bodied with plenty of volume and capacity. These heifers are smooth and in just the right condition for turn out and calving. Safe in calf to Joe Dean low birth weight Angus bulls to start calving in late spring with a 45 day calving window.

BRADSHAW CATTLE CO.

Peidmont, OK
405-684-7466



46 11 – Heavy Bred Red Angus Heifers

A.I. Bred 6/24/2016 to MLK CRK Epic 8171. P.E. MBR 1175 Low Birthweight Red Angus Bull.

Bradshaw Ranch will be making their first appearance to the Fort Worth Commercial Heifer Sale. The mothers of these heifers originated from Baldrige/Teidaman Red Angus genetics and they are sired by Gilcreist Red Angus Bulls. These are deep and soggy with the right genetics to make great mothers. They are safe in calf to begin calving the first of April to calving ease specialist MLK CRK Epic 8171.

BELL RANCH/SILVER SPUR

Salano, NM
830-285-6828 or 575-868-2207 or 806-336-5546



47 12 Heavy Bred Red Angus Heifers

8-9 Months safe in calf to Silver Spur Red Angus Bulls

48 12 Red Angus Pairs

30-Day-Old calves at side by Silver Spur Ranch Red Angus Bulls

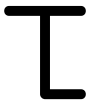
49 12 Red Angus Pairs

30-Day-Old calves at side by Silver Spur Ranch Red Angus Bulls

The Reserve Grand Champion Pen Overall came from this group last year, and the quality of cattle from this ranch is consistent year after year. There are many years of maternal performance and longevity bred into these "Red Bell" Red Angus Heifers that are always put their calves first and raise them with very nice udders. These heifers will be in the perfect condition for calving and two of the pens will have their calves on the ground. Be sure to find this group when you get to Fort Worth if you want to see the Cowboy's kind of Cow.

TOP LINE CATTLE LLC

Bridgeport, TX
817-247-8011



50 12 Heavy Bred Lim-Flex Heifers

A.I. Bred to MAGS Bronson 5/12/2016. P.E. to Calving Ease LimFlex Bulls.

These are three-quarter Angus, one-quarter Limousin Lim-Flex Heifers. All these heifers were AI'd to Mags Bronson who was a member of the 2015 Champion Lim-Flex carload pen at Denver. He post a 10 CED with a -1.1 BW EPD. Bronson had a 74lb BW with a 1449lb YW and scanned a 19.6 REA and a 3.21 ADJ IMF. All clean up bulls will be low birth weight Lim-Flex bulls. Bred to start calving February 18.

4J FAMILY PARTNERSHIP

Parker, TX
972-965-6444



51 10 Maine – Angus Fall Calving Heifers

60 to 90 days safe in calf to I-80 Maine Son

This young service sire is out of I-80 the most famous ,easy calving bulls in the Maine-Anjou breed. And, his dam is out of Top Secret which is another great bull in the Maine-Anjou breed. The calves of these heifers should make someone some good show calves. 4-J Ranches has been National Breeder of the Year in the Maine-Anjou breed, and inducted into the National Maine-Anjou Hall of Fame.

FRYER CATTLE COMPANY

Chatanooga, OK
580-335-1345



52 10 Heavy Bred Simmy-Maine-Angus Cross Heifers

Safe in calf 8 Months to Smokey Y About Time 559C (Red Angus)

All heifers bred to registered Red Angus bull with -2.7 BW EPD. Simmental/Maine/Angus Cross Heifers. Maternally made females that are versatile to work any operation. Heifers go back to Irish Whisky, Myer 734, Chopper, and Blackwatch. These heifers have the qualities and genetics to make great foundation females.

NEUNDORF CATTLE

Edmond, OK
405-740-5490



53 12 Heavy Bred Maine-Angus Heifers

A.I. Bred to GCC Legacy and Daddy's Money on 5/19/2016

These are the mates to the heifers that won this Division in 2016, and that is no small feat considering the competition. The heifers that are sorted for this year's sale are sired by Last Stand and are out of the nucleus Neundorf Angus Herd. They are big Boned, Sound Structured and are packaged in a moderate frame that is perfect for today's cattleman that is focused on efficiency. They are Big Bodied and have a Powerful Look. They are all A.I. Bred to GCC Legacy or Daddy's Money for Calving Ease. Due to calve February 25.

GRISWOLD CATTLE

Stillwater, OK

405-780-3300 or 405-564-4319 Craig Sand

G-

57 10 Maine x Angus x Simmi Bred heifers

6-8 Months safe in calf to GCC Volumizer and New Look sons

This group of heifers is bred to be very maternal having Whisky, Momentum, Lincoln and Nick Daughters in it. These were sorted right out of our replacements and are a true representation of the Griswold Cattle, G Bar Brand.

58 10 Angus sired, Maine Cross Bred heifers

5-6 Months safe in calf to GCC Volumeizer 774Y

The majority of this pen is sired by our Angus Herd sires, Legacy, Eight-Ball and Lone Star. This is what our cow herd is built on, solid, predictable Angus genetics that go back to the original Griswold Angus herd that Dad (Joe) built years ago. If you want to know how we produce the great Whisky daughters, it starts with females like these.

59 10 Fall Calving Maine X Angus Heifers

2-4 months safe in calf to GCC Volumizer 774Y

Here is a real opportunity for any club calf producers. Most of the heifers in this group are Irish Whisky daughters with two Cerveza daughters making up the balance. They are set to calve in early fall to GCC Volumizer 774Y, a Volumizer son out of one of our Duff Great Plains Daughters. 774Y has a negative Birthweight and a +10 calving ease score. This group should calve at just the right time to make the great Fall Borns!

60 10 Fall Calving, Simmi X Maine X Angus Heifers

2-4 months safe in calf to GCC Volumizer 774Y

The G Bar brand is well represented in this pen by our top herd sires. They have the look, the structure and the functionality of the Griswold cow herd and they are ready for grass, set up for early fall calving. 774Y is a calving ease specialist, Volumizer son.

54 11 Heavy Bred Maine X Angus Heifers

A.I. Bred to Gold Standard then P.E. to Gold Standard Sons

There are seven Irish Whisky daughters and two Double Goods in this pen of Maine influenced heifers that will prove to be some of the most productive females on the ranch. We just cannot get enough of these Irish Whisky daughters it is time you had a shot. There will be some calves by Gold Standard by sale day, some of these are safe to female sexed Gold Standard semen.

55 10 Heavy Bred Simmi X Angus Heifers

A.I. Bred to Gold Standard P.E. GCC Calving Ease Angus, Total Recall, Distinction and Missing Link sons

Steel Force, Lincoln, Houston and Combustible are the sires of these blaze face, eye catchers. This pen of heifers is sorted to be perfectly matched and we anticipate being very competitive with these. Look for some Gold Standard calves by Sale Day.

56 10 Simmi X Angus Bred Heifers

6-8 Months safe in calf to Gold Standard and GCC sons of New Look, I-80 and New Edition.

You will love the Depth, Width and Shape of these heifers that have Steel Force, Showgun, Cartel and Cerveza in their pedigrees.

TRUCKING ARRANGEMENTS

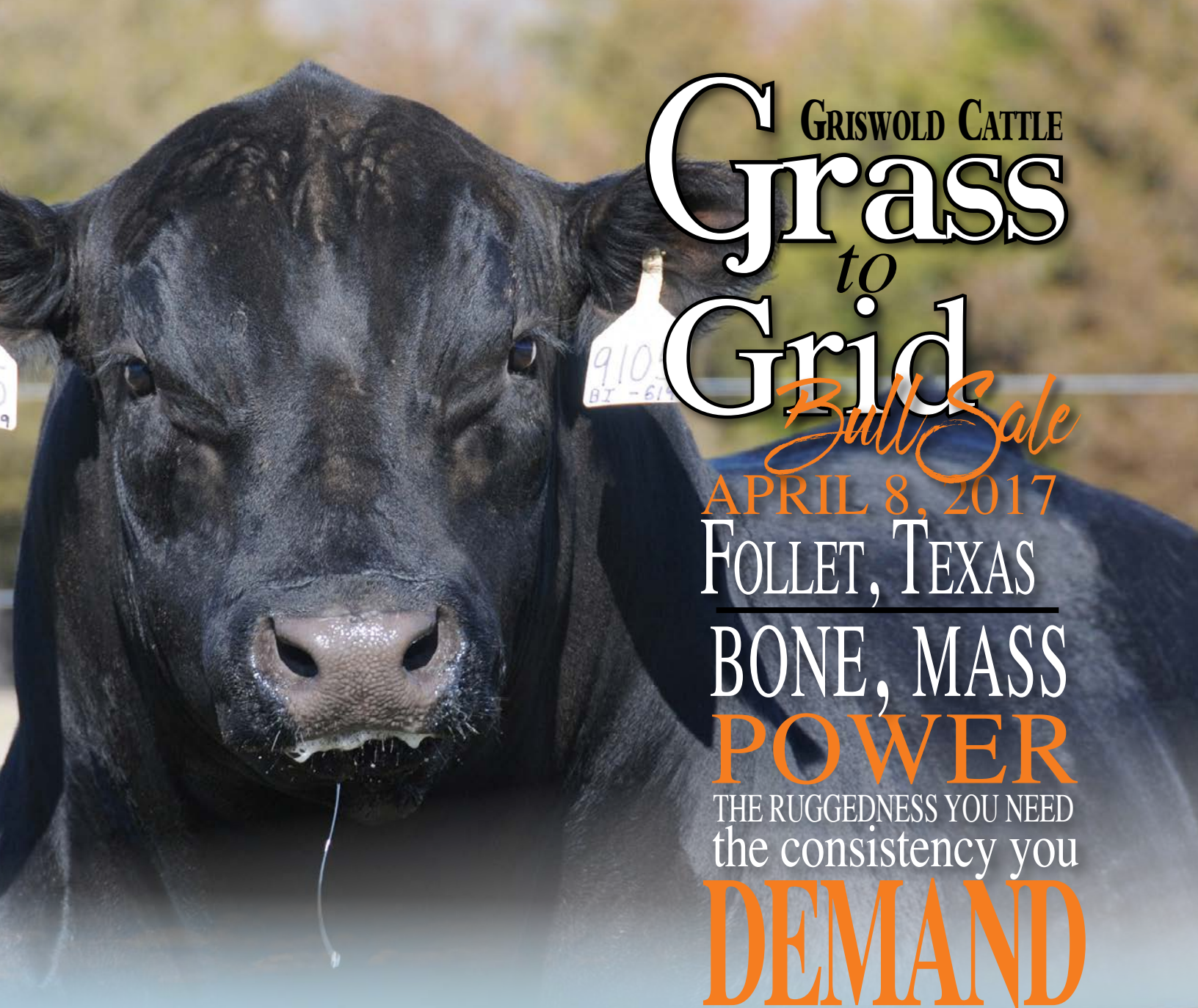
If you need assistance with transportation of your purchases, the following truckers are recommended by the sale management and they are known to be reliable.

Larry Smith 817-832-3032

John K. Smith 254-625-2159

Wade Wells 806-477-9006

Randy Lathrop 847-426-5009



GRISWOLD CATTLE
Grass
to
Grid

Bull Sale

APRIL 8, 2017

FOLLET, TEXAS

BONE, MASS

POWER

THE RUGGEDNESS YOU NEED
the consistency you

DEMAND

Cow families generations deep, our bulls are RUGGED, Big Footed, Big Topped, Cattlemen's kind of bulls. Raised in big open lots, in breeding shape, from a program FOCUSED ON QUALITY!

Experience the Griswold Difference!

Selling

250 BULLS - ANGUS, SIMANGUS, & IRISH WHISKEY ANGUS

Sale Management by Robbie Schacher / 817-219-0102

Stillwater, Oklahoma

John Griswold: 405-780-3300

Jeff Bourquin: 806-886-3145

Greg Griswold: 405-780-0100

Craig Sand: 405-564-4319

www.griswoldcattle.com

Add Value To Your Breeding Program

Getting a young cow off to a good start is critical

Cows that calve early: wean heavier calves, breed back sooner and are more profitable. ABS offers reliable, high accuracy genetics combined with expert support at less cost than buying bulls. Turn to ABS Professionals when making breeding decisions for your heifers.

- ✓ All bred females typically sell for \$150 to \$200 premium at auction
- ✓ Eliminate guesswork with high accuracy sires - proven ABS calving ease sires can reduce or eliminate calving difficulties
- ✓ Select traits to add profit, convenience, and consistency to your herd
- ✓ Synchronization helps cows and heifers get pregnant early in the breeding season. Thus, they calve early giving them a higher chance to breed back sooner and produce a more uniform calf crop
- ✓ Synchronization programs are more reliable than ever and can add up to 9 days of age & additional weight
- ✓ All this at comparable or less cost than buying calving ease bulls

29AN1965

HICKOK



MILL BAR **HICKOK** 7242 AAA 17351674
CONNEALY CONSENSUS 7229 x MILL BAR BEMINDFUL MAID 6304

Balance at It's Best

29HH0838

DOMINO 3027



UPS **DOMINO 3027** AHA 42426386
CL 1 DOMINO 9126J 1ET x UPS MISS DIAMOND 1353

The Calving Ease Cowmaker

Roger Wann, District Business Manager, Lindsay, TX
940-727-8492 • roger.wann@genusplc.com

John Merrill, Area Beef Manager, Sulphur Springs, TX
817-832-5286 • john.merrill@genusplc.com

John Kirk	Nacogdoches, TX.....	936-564-8686
Brad Jones.....	Telephone, TX	903-227-4975
Joe Wilkerson.....	Valley View, TX.....	940-372-0558
Ted Gilliam.....	Quanah, TX.....	940-839-8126
Gary Mathews	Woodson, TX	940-873-3250
Don Benton	Seguin, TX.....	325-388-8087
Darrel Geron	Bangs, TX.....	325-647-1068
Max Payne.....	Pampa, TX	806-669-4284
Randy Goode	Damon, TX	281-804-4021
Kerry Williams	Tolar, TX	817-279-2079
Wyman Poe	Navasota, TX.....	979-229-0722
Texas Beef Science Center ...	Kerrville, TX.....	830-992-1851
Dianna Capps.....	Atoka, OK	580-239-2863
Danny Wann	Poteau, OK	918-658-8471
Mark Sexton.....	Muskogee, OK.....	918-541-0418
Marty Ponder	Bristow, OK	918-639-2824
Phil Perryman.....	Apache, OK.....	580-550-3198
Brock Finley.....	Lawton, OK.....	580-512-7573
JP Mcilvain	Woodward, OK.....	580-254-1129
Lucas Reinhart.....	Ratliff City, OK.....	580-276-0070
Ross Edwards	Calumet, OK	580-920-5910
Many Encinias.....	Clayton, NM.....	505-927-7935
Laban Tubbs.....	Clarendon, TX	806-205-2428
Bear Creek RPS.....	Loenard, TX.....	903-227-8193



The Cattleman



CONNECTING BUYERS AND SELLERS

For 100 years, *The Cattleman* has connected buyers and sellers through the pages of a monthly magazine.

WE'RE READY FOR THE NEXT CENTURY!

FIND INFORMATION
you need in the format you want.

REACH BUYERS

with interactive information through *The Cattleman* publication options.

"I always know when The Cattleman comes out, because my phone starts ringing."

Bobby Lide, Triple L Ranch

Market bulls and females to more than 18,000 readers who manage approximately 4 million head of cattle on 76 million acres in Texas, Oklahoma and the Southwest.



GINA BRYSON-LOVETT
Media Consultant
800-242-7820, ext 133
cell: 817.614.3830
gbryson@tskra.org

For More Information Contact:



SHAWN MCCOY
Advertising Sales
800-242-7820, ext 121
cell: 817.929.8597
smccoy@tskra.org





FULL VALUE BEEF™

THE FULL VALUE OF A TRUE PARTNERSHIP

Full Value Beef™ starts with you and a thorough understanding of why you do what you do and how the industry's challenges affect your operation and your livelihood. Whether it's using our data and analytic capabilities to discover insights that are meaningful to your business or delivering solutions through both our innovative new products and the trusted brands producers have depended on for years, it's all about showing you the full value of a true partnership.



Only ionophore approved for mature, reproducing beef cows

Rumensin® improves feed efficiency in beef cows, reducing their feed requirements 5 to 10 percent while maintaining body weight with no negative impacts on reproductive performance.¹ Rumensin also improves average daily gain in replacement heifers, resulting in fewer days to first estrus — which can result in improved lifetime productivity.²

Elanco

Rumensin®

Consumption by unapproved species or feeding undiluted may be toxic or fatal. Do not feed to veal calves. The label contains complete use information, including cautions and warnings. Always read, understand and follow the label and use directions.

Rumensin: Growing cattle on pasture or in drylot (stockers, feeders, and dairy and beef replacement heifers)

For increased rate of weight gain: Feed 50 to 200 mg/hd/d of monensin in at least 1.0 lb of Type C medicated feed. Or, after the 5th day, feed 400 mg/hd/d every otherday in at least 2.0 lbs of Type C medicated feed. The Type C medicated feed must contain 15 to 400 g/ton of monensin (90% DM basis).

For the prevention and control of coccidiosis: Feed at a rate to provide 0.14 to 0.42 mg/lb of body weight/d of monensin up to a maximum of 200 mg/hd/d. The Type C medicated feed must contain 15 to 400 g/ton of monensin (90% DM basis).

Free-choice supplements: Approved supplements must provide not less than 50 nor more than 200 mg/hd/d of monensin.

Rumensin: Mature reproducing beef cows

For improved feed efficiency when receiving supplemental feed: Feed continuously at a rate of 50 to 200 mg/hd/d of monensin.

Cows on pasture or in drylot must receive a minimum of 1.0 lb of Type C medicated feed/hd/d. Do not self-feed.

For the prevention and control of coccidiosis: Feed at a rate of 0.14 to 0.42 mg/lb of body weight/d of monensin up to a maximum of 200 mg/hd/d.

Robert Horner

Elanco Sales Representative

940-327-7600



¹Rumensin Freedom of Information Summary (NADA95-735).

²Elanco Study Nos. T1F207848, T1F307853, T1F367767, T1F427824 & T1F4876A3. Data on file.

Elanco®, Full Value Beef, Rumensin® and the diagonal bar are all trademarks owned or licensed by Eli Lilly and Company, its subsidiaries or affiliates.

© 2015 Eli Lilly and Company, its subsidiaries or affiliates.

CND 36300

USBBURUM00224

BREEDING *Legendary* CATTLE



THESE FEMALES SELL
IN FORT WORTH!

30th Annual COMMERCIAL HEIFER SALE

SATURDAY, FEBRUARY 4, 2017 • SOUTHWESTERN EXPOSITION INVITATIONAL •
3:30 P.M. • FORT WORTH, TEXAS

These heifers are selected from among the best in Legends Cattle Company's herd (formerly Garrett Brangus). These heifers are also AI bred with female sexed semen to Bradley 3 Ranch bull Y162 Elector, with an EPD calving ease of 21 and a negative birth weight. These bred heifers are ones upon which you can build your herd, with proven genetics to thrive in the pasture. Calving to begin March 1, 2017.

Legends
★ CATTLE CO.

Todd Garrett
1500 E. US Hwy 69
Emory, TX 75440

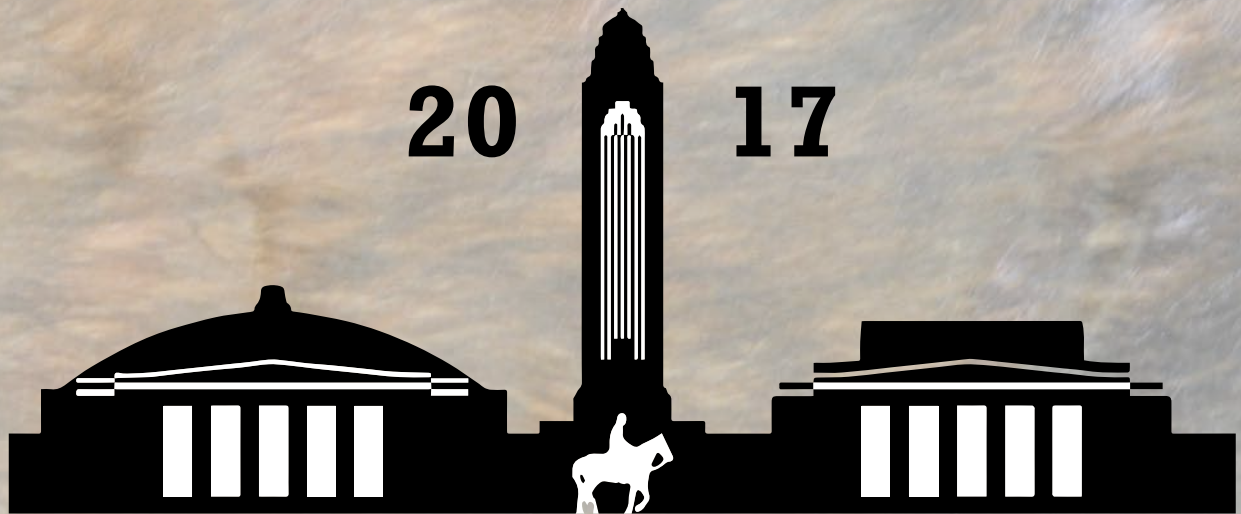
903-560-8311
todd@legendscattle.com
legendscattle.com



SCHACHER AUCTION SERVICES

PO Box 33804, Fort Worth, Texas 76162

Pre-Sort
First Class Mail
U.S. Postage
PAID
SlateGroup



FORT WORTH STOCK SHOW
Commercial Heifer Sale

West Arena, Fort Worth Stock Show **SATURDAY, FEBRUARY 4, 2017** 3:30 PM • Fort Worth, TX