

Lundgren Charolais 4th Annual Bull Sale

March 18th, 2017

Sale starts at 1:00 PM (Lunch at 11:00)

Stockland Livestock Auction in Davenport, WA

Over 40 Years of Producing Quality Charolais Range Cattle in the Cascade Mountains for your Commercial and Purebred needs!

Selling 42 Range Ready Charolais Bulls

- 30 Two Year old Bulls*
- 12 Yearling Bulls*

Catalog and Video Link Online at:

www.LundgrenCharolais.com



Lundgren Charolais Winthrop, WA:

Don and Chris Lundgren: © (509)-341-4178 (H) (509)-996-2497

Cody Lundgren: © (509)-341-4150 (H) (509)-996-3294

Beau Lundgren: © (208)-546-8574

Email: lundgrenb@live.com or chewackriverranch@gmail.com

Visit our website at: www.lundgrencharolais.com



Mostly Polled, Calving Ease, Growth and Durability. Semen & Trich Tested & Ultrasound Data, BVD PI Free.

LUNDGREN CHAROLAIS

4th Annual Bull Sale

March 18th, 2017 - 1:00 pm Complementary Lunch Served at 11:00 am

STOCKLAND LIVESTOCK AUCTION

1505 12th St. DAVENPORT, WA 99122

General Sale Information:

SALE LOCATION

Stockland Livestock Auction

1505 12th St. Davenport, WA 99122

35 miles East of Spokane on HWY 2

From Spokane turn left on HWY 28 in Davenport

SALE DAY PHONES

Don Lundgren (509)-341-4178

Cody Lundgren (509)-341-4150

Beau Lundgren (208)-546-8574

Stockland Livestock (509)-535-2444

TRUCKING

-Free delivery within Washington State to central locations

-\$50 discount per head if you haul your own animal on sale day

-Delivery at buyers risk

-Each animal will be at the buyers risk immediately after sold

BIDDING

Each animal in which there are two bids will be sold to the highest bidder

TERMS

-Terms of the sale are cash or bankable checks made payable to Stockland Livestock immediately after the sale

-1/3 semen interest retained in all sale bulls to be collected at the sellers expense and the buyers convenience

DISPUTES

All disputes will be settled by the auctioneer

BREEDER GUARENTEE

All animals sold are guaranteed breeders by the owner. Any animal that has not proven itself a breeder within six months after the sale, if in healthy condition, may be returned to seller at the buyer's expense. Should the animal fail to prove a breeder, the seller - at his option, may either replace the animal with another of equal quality in full settlement and satisfaction of all claims or give credit for the next year's sale. All complaints regarding breeding difficulties must be reported in writing to the seller within the time limit as specified above and in good condition. All cattle are registered or recorded in the American International Charolais Association and proper certificates will be furnished if requested.

ANNOUNCEMENTS

Announcements from the auction box will take precedence over the printed material in the catalog

LIABILITIES

All persons attending this sale do so at their own risk. Lundgren Charolais and Stockland Livestock assume no legal liability or otherwise for any accidents which may occur.

SEALED BIDS

Early telephone bids can be given to Don Lundgren (509)-341-4178 or Beau Lundgren (208)-546-8574

Health

All animals are tested Negative for BVD PI. All bulls have passed a semen and trich test. Health papers will be issued to out of state buyers on sale day

Note

The bulls in the catalog are not in sale order. A sale order will be available online and at the sale facility Friday March 17th before the sale.

Welcome to our 4th Annual Lundgren Charolais Bull Sale,

First and foremost, we would like to thank all of our buyers from our 2016 Bull Sale! On Saturday March 18th, 2017 we are holding our 4th Annual Lundgren Charolais Bull Sale at Stockland Livestock in Davenport, WA. Lunch will be at 11:00 am, and the sale starts at 1:00 pm.

This year we are offering 42 Charolais; 30 coming 2 year olds, and 12 yearling bulls. The average daily gains on the bulls were calculated from 120 days of feed. This set of bulls have gained exceptionally well with many average daily gains over 4 pounds a day.

We have been raising and breeding quality Charolais range cattle in the Cascade Mountains for 40 plus years, breeding and selecting for valuable basic traits with the aid of harsh Northern Cascade winters and dry arid summer conditions. . Through the years we have incorporated some of the top genetics that fit our program through AI and by natural breeding. We select for structural soundness, smooth shoulders for calving ease, ease of fleshing, and fertility. Our purebred Charolais run on mountain pasture from early spring to late fall on steep rugged Forest Service grazing allotments in the Cascade mountain range. Cow calf pairs travel in elevation ranges from 2000-6500 feet, foraging on native bunch grass until snow covers the ground in late fall. Our females are tough and hardy with a sound athletic body structure and added maternal performance. Our calves are not pampered or creep fed and their weaning weights are straight from the cow fresh off the mountain side.

Our coming 2 year old bulls are not grained or put on feed until the fall of their coming 2 year old season. All of our calves conceived on the range are DNA Parentage tested through Igenity to confirm their sires.

Over the years, we have had many top gaining Bulls at different feed tests, including the # 1 gaining Charolais bull at WSU bull test at Prosser, WA and the #2 gainer at the Midland Montana Bull test. We hope that you will consider our Bulls for the upcoming breeding season. Feel free to call any one of us and discuss our Bulls . Our Bulls are available to view at Beus Feedlot at 503 E. Vineyard Lane in Pasco, WA, 99301 and at Stockland Livestock Auction the Thursday before the sale. A video link to the bulls will be online at www.lundgrencharolais.com. We hope to see you all there, but if you can't make the sale you can bid online at SuperiorLivestock.com (see directions to bid online in back of catalog) or call Don, Cody or Beau and put in your bids with them.

Thank you sincerely, Don and Chris Lundgren, Cody Lundgren, Beau Lundgren, Conner and Lacey Treat.



Reference AI Sire



LT LEDGER 0332 P

BD: 4/3/10 Reg# M791626 Polled
BW: 85 ADJ WW: 778 ADJ YW: 1392 Y SC: 43

Sire: M686569 LT BLUEGRASS 4017 P
 M620193 LT ASSERTION 1277 P
 F852572 LT ALLI'S CLASS 9140 P
 M411450 LT WYOMING WIND 4020 PLD
 F956080 LT PEARL'S BREEZE 2236 P
 F792980 LT UNLIMITED PEARL 7053P
 M620591 LT RIO BLANCO 1234 P
 M665507 LT RIO BRAVO 3181 P
 F852553 LT 7N OF DUKE 9083 PLD

Dam: F1046992 LT BRENDA 6120 PLD
 M301930 LT UNLIMITED EASE 9108
 F979389 LT BRENDA'S EASE 3055PLD
 F924572 LT BRENDA 1014 PLD

CE	BW	WW	YW	MIK	MCE	MTL	SC	CW	REA	Fat	Marb
6.7	-1.1	32	69	4	4.4	20	1.8	31	0.86	0.041	0.043

Ledger...the record-selling bull at \$105,000 in the 2011 Lindskov-Thiel Ranch Bull Sale. He combines an impressive data set and extraordinary gentleness with even more impressive sons and daughters. Ledger is anchored by two great cow families whose AICA Dams of Distinction solidify his breeding value. Ledger is an impressive carcass bull having an REA of 18.42 and his EPD's rank in the top 2% SC, 25% CE, 5% CW, 2% REA, and 1% MARB! His calves continue to be standouts for us every year.

Lot
1

LCR LEDGER'S CLASS 400 PLD

BD: 1/17/16 Reg# M885520 Polled SC: 40 cm
BW: 81 ADJ WW: 787 ADJ YW: 1200 ADG: 4.2 lbs

Sire: M791626 LT LEDGER 0332 P
 M620193 LT ASSERTION 1277 P
 M686569 LT BLUEGRASS 4017 P
 F956080 LT PEARL'S BREEZE 2236 P

Dam: F1186486 LCR CLASSY LADY 400 PLD
 M778144 CR COWBOY 999 PLD
 F1129898 CR MS COWBOY 030 P
 F992809 CR MISS RAMSEY 317 PLD

CE	BW	WW	YW	MIK	MCE	MTL	SC	CW	REA	Fat	Marb
6.8	-1.0	30	61	5	5.5	21	1.0	20	0.62	0.022	0.23

Lot
2

LCR LEDGER'S EASE M74 PLD

BD: 2/02/16 Reg# M885460 Polled SC: 41 cm
BW: 78 ADJ WW: 728 ADJ YW: 1133 ADG: 4.1 lbs

Sire: M791626 LT LEDGER 0332 P
 M620193 LT ASSERTION 1277 P
 M686569 LT BLUEGRASS 4017 P
 F956080 LT PEARL'S BREEZE 2236 P

Dam: F1054520 4C'S NADINE M74
 M301930 LT UNLIMITED EASE 9108
 F756295 EASE'S MISS CINDY 4C M09
 F645703 MISS RASCAL'S PRINCESS

CE	BW	WW	YW	MIK	MCE	MTL	SC	CW	REA	Fat	Marb
4.5	0.4	26	52	8	4.7	21	1.1	23	0.58	0.018	0.04



A very deep, solid thick made bull out of an excellent EC First Class 1st calf heifer. LEDGERS CLASS will give you calving ease and add pounds to your calf crop at weaning. Tied with lot 6 for highest gaining yearling bull! Top 15% for REA and MARB EPD. TSI: 211.43!



A deep ribbed calving ease Ledger son with a wide butterfly top. A great spread from birth to weaning with an impressive 41 cm scrotal, gaining over 4 pounds a day. He is out of a very productive 10 year old Eliminator daughter.

Lot
3

LCR PRIME LEDGER 451 PLD

BD: 1/17/16 Reg# M885521 Polled SC: 40 cm
BW: 74 ADJ WW: 794 ADJ YW: 1124 ADG: 3.3 lbs

Sire: M791626 LT LEDGER 0332 P
M620193 LT ASSERTION 1277 P
M686569 LT BLUEGRASS 4017 P
F956080 LT PEARL'S BREEZE 2236 P
M665507 LT RIO BRAVO 3181 P
F1046992 LT BRENDA 6120 PLD
F979389 LT BRENDA'S EASE 3055PLD
M749278 RAILE 2250 T077
M803412 EC FIRST CLASS 5027 PLD
F1025937 EC TRENDY LADY 5027 P
Dam: F1186486 LCR CLASSY LADY 451 PLD
M694179 VVCR WHITEHOT PRESTIGE
F1130023 CR MS HOT PRIME 636 PLD
F925935 CR MISS PRIME PARTNER P



CE	BW	WW	YW	MIik	MCE	MTL	SC	CW	REA	Fat	Marb
5.7	-0.4	30	55	5	5.4	20	1.0	17	0.53	0.021	0.41

Calving ease deluxe! Out of a first calf heifer, this Ledger son posted a large weaning weight. He is correct and thick all the way through. Looking to add higher carcass scores to your calf crop? He is in the top 1% of the breed for marbling with an actual marbling score of 4.82 IMF!! TSI: 208.22

Reference AI Sire



EATONS ROYAL DYNASTY 6164

BD: 3/20/06 Reg# M726505 Polled
BW: 96 ADJ WW: 697 ADJ YW: 1286

Sire: M652197 EATONS VALUE ROYAL 2101P
M460645 WCR PRIME CUT 764 PLD
M501702 LT POLLED VALUE 9089
F793032 LT UNLIMITED MAID 7184 P
M492460 EATONS ROYAL 8077
F907817 EATONS CUTLASS 0520
F828702 EATONS MISS CUTLASS 8629
M492447 EATONS SEQUENCE 7012
M613095 EATONS CHANNELER 9103
F787333 EATONS MISS GRADY 6575
Dam: F954824 EATONS MISS CADET 2899
M342802 EATONS DYNASTY 1093
F707520 EATONS MISS CADET 4637
F545964 EATONS MISS CADET 9551

CE	BW	WW	YW	MIik	MCE	MTL	SC	CW	REA	Fat	Marb
0.4	0.2	23	57	31	4.5	43	1.0	8	0.61	-0.010	0.03

Royal Dynasty is an AI Sire we have used for a few years, he offers Calving-ease, performance and the Top 1% for Milk EPD, from the top of the Eaton herd. He's loaded with maternal production and udder quality genetics. His dam, an AICA Dam of Distinction, had an average weaning ratio of 109 on five calves before selling to Acadia Ranching in Canada. Dynasty's own weaning and yearling ratios were 119 and 113 in groups of 200+ bulls. Sons are rugged performance bulls. His Daughters have been great additions to our herd with great udder structure and performance.

Lot
4

LCR DANDY DYNASTY 225 PLD

BD: 1/21/16 Reg# M885519 Polled SC: 40.5 cm
BW: 83 ADJ WW: 703 ADJ YW: 1069 ADG: 3.7 lbs

Sire: M726505 EATONS ROYAL DYNASTY 6164
M501702 LT POLLED VALUE 9089
M652197 EATONS VALUE ROYAL 2101P
F907817 EATONS CUTLASS 0520
M613095 EATONS CHANNELER 9103
F954824 EATONS MISS CADET 2899
F707520 EATONS MISS CADET 4637
M620193 LT ASSERTION 1277 P
M758009 AVILAS ASSERTION 8151
F994201 BCC MAIDEN 020-4063
Dam: F1162981 LCR MISS DANDY ASSET 225 PLD
M694179 VVCR WHITEHOT PRESTIGE
F1145331 CR MS HOT VANDY 913 PLD
F1059339 CR HOT PARTY GIRL 432 P



A stylish calving ease bull with a good weaning weight. He has a large scrotal for a yearling and will make some great replacement females being in the top 7% for MILK EPD.

CE	BW	WW	YW	MIik	MCE	MTL	SC	CW	REA	Fat	Marb
2.8	0.0	14	37	17	5.3	25	0.6	6	0.43	0.002	-0.16

Lot

5

LCR DYNASTY'S PRESTIGE 913 PLD

**BD: 2/08/16 Reg# M885523 Polled SC: 34 cm
BW: 70 ADJ WW: 762 ADJ YW: 1100 ADG: 3.4 lbs**

Sire: M726505 EATONS ROYAL DYNASTY 6164
 M501702 LT POLLED VALUE 9089
 M652197 EATONS VALUE ROYAL 2101P
 F907817 EATONS CUTLASS 0520
 M613095 EATONS CHANNELER 9103
 F954824 EATONS MISS CADET 2899
 F707520 EATONS MISS CADET 4637
 M653774 P-3 WHITEHOT LAD 9-86J

Dam: F1145331 CR MS HOT VANDY 913 PLD
 M476538 UI PARTNER 842
 F1059339 CR HOT PARTY GIRL 432 P
 F909700 CHEWACK HOT VAND PLD 427



Great spread from birth to weaning on this bull. His dam is a proven calving ease producer with 5 calves averaging 72 pounds. Top 5% BWT, 10% CE, 10% MCE, and 5% for MILK EPD.

CE	BW	WW	YW	Milk	MCE	MTL	SC	CW	REA	Fat	Marb
8.5	-3.2	15	35	19	7.3	27	0.6	7	0.35	-0.004	0.01

Lot

6

LCR DYNASTY 126 PLD

**BD: 1/16/16 Reg# M885518 Polled SC: 38 cm
BW: 96 ADJ WW: 646 ADJ YW: 1059 ADG: 4.2 lbs**

Sire: M726505 EATONS ROYAL DYNASTY 6164
 M501702 LT POLLED VALUE 9089
 M652197 EATONS VALUE ROYAL 2101P
 F907817 EATONS CUTLASS 0520
 M613095 EATONS CHANNELER 9103
 F954824 EATONS MISS CADET 2899
 F707520 EATONS MISS CADET 4637
 M633377 M6 GRID MAKER 104 PET
 M685500 EC NO DOUBT 2022 P
 F956614 EC LADY DUKE 2022 P

Dam: F1146057 CR DONT DOUBT HER 126 PLD
 M476538 UI PARTNER 842
 F925935 CR MISS PRIME PARTNER P
 F857429 LADY CHEWACK PRIME 709



A deep soggy made Dynasty son that is really coming on as of late, gaining 4.2 pounds a day. He is very long and smooth shouldered with a docile temperament. Tied with lot 1 for the highest gaining yearling bull!

CE	BW	WW	YW	Milk	MCE	MTL	SC	CW	REA	Fat	Marb
0.0	0.8	12	38	18	1.8	24	0.6	11	0.42	-0.001	0.11

Lot

7

LCR FASTTRACK ADVANTAGE 415 P

**BD: 2/16/16 Reg# pending Polled SC: 35 cm
BW: 68 ADJ WW: 764 ADJ YW: 1049 ADG: 3.0 lbs**

Sire: M447863 BALDRIDGE FASTTRACK 82F
 M225504 BCR POLLED UNLIMITED 003
 M301930 LT UNLIMITED EASE 9108
 F338075 PP MISS SHANDY 214 R194
 M319454 ASC ELIMINATOR 032
 F711331 BALDRIDGE SWEETHEART 53D
 F611797 JB SWEETHEART 32A
 M685500 EC NO DOUBT 2022 P
 M827110 LCR ADVANTAGE 625 PLD
 F1131481 CR MS FASTMAC 625C

Dam: F1195797 LCR MISS ADVANTAGE 415 PLD
 M694179 VVCR WHITEHOT PRESTIGE
 F1130357 CR HOT LADY WIND 032 PLD
 F1130227 CR MS MAC WIND 421 P



Our last Baldrige Fasttrack AI son, that would work well as a heifer bull. Out of a first calf heifer, this medium framed bull ranks at the top 4% for BWT, 1% CE and 7% MCE EPD's.

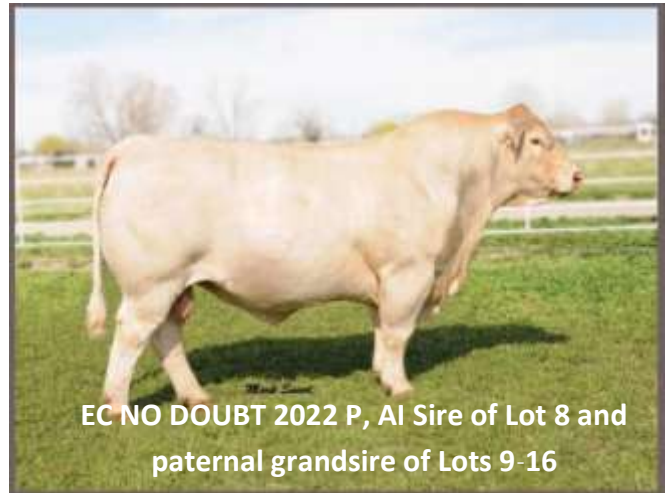
CE	BW	WW	YW	Milk	MCE	MTL	SC	CW	REA	Fat	Marb
12.8	-3.6	20	30	10	7.8	20	0.2	0	-0.10	0.011	0.09

Lot
8

LCR NO DOUBT 626 PLD

BD: 1/10/15 Reg# M868899 Polled SC: 34 cm
BW: 94 ADJ WW: 604 ADG: 3.0 lbs

Sire: M685500 EC NO DOUBT 2022 P
M318119 WCR SIR TRADITION 066
M633377 M6 GRID MAKER 104 PET
F665163 VCR MISS MAC IV 317
M297007 VCR SIR DUKE 914 PLD
F956614 EC LADY DUKE 2022 P
F668991 JES MS ADVANTAGE C74
M653774 P-3 WHITEHOT LAD 9-86J
M694179 VVCR WHITEHOT PRESTIGE
F643136 VVCR PRESTIGE EXPT 2150
Dam: F1110360 CR MISS HOTPRIME 626
M375143 LHJR CX PRIMETIME 302
F992806 CR MISS PRIMEMAC 608
F924049 CR MISS MAC 341 PLD



- Very docile.

CE	BW	WW	YW	MIik	MCE	MTL	SC	CW	REA	Fat	Marb
1.3	1.5	13	20	4	-0.2	11	0.2	2	0.04	0.002	0.09

Lot
9

LCR ROYAL TRADITION 388 PLD

BD: 3/02/15 Reg# M885242 Polled SC: 40.5 CM
BW: 70 ADJ WW: 705 ADJ ADG: 4 lbs

Sire: M838590 LCR ROYAL TRADITION 125 PLD
M633377 M6 GRID MAKER 104 PET
M685500 EC NO DOUBT 2022 P
F956614 EC LADY DUKE 2022 P
M726505 EATONS ROYAL DYNASTY 6164
F1130314 CR MS REGAL DYNASTY 125 PLD
F1059953 CR MISS PARTNER 420 PLD
M620193 LT ASSERTION 1277 P
M758009 AVILAS ASSERTION 8151
F994201 BCC MAIDEN 020-4063
Dam: F1195793 LCR MS CHEWACK ASSERT 388 PLD
M314893 UI SIR MAC 023
F857425 CHEWACK MISS MAC YL 901
F772287 RC MISS YL 6132



An extra deep ribbed, thick calving ease bull, without sacrificing weaning weight or ADG. This bull is out of a first calf heifer from a proven calving ease cow family. He was used as a cleanup heifer bull as a yearling, he will make an excellent addition to any herd. Top 6% for BWT and 7% for CE EPD

CE	BW	WW	YW	MIik	MCE	MTL	SC	CW	REA	Fat	Marb
9.5	-3.1	16	37	8	5.4	16	0.5	10	0.23	0.017	0.02

Lot
10

LCR COWBOY TRADITION 369 PLD

BD: 3/5/15 Reg# M868937 Polled SC: 40 CM
BW: 92 ADJ WW: 730 ADG: 3 lbs

Sire: M838590 LCR ROYAL TRADITION 125 PLD
M633377 M6 GRID MAKER 104 PET
M685500 EC NO DOUBT 2022 P
F956614 EC LADY DUKE 2022 P
M726505 EATONS ROYAL DYNASTY 6164
F1130314 CR MS REGAL DYNASTY 125 PLD
F1059953 CR MISS PARTNER 420 PLD
M411450 LT WYOMING WIND 4020 PLD
M797960 CR COWBOY WIND 999B PLD
F857422 CHEWACK SHURRTOP COWGIRL
Dam: F1195790 LCR MS COWBOY CANDY 369 PLD
M694179 VVCR WHITEHOT PRESTIGE
F1145331 CR MS HOT VANDY 913 PLD
F1059339 CR HOT PARTY GIRL 432 P

LCR ROYAL TRADITION 125 PLD Sire of Lots 9-11



Put some length and add pounds at weaning with this bull. He was long, tall and smooth shouldered at birth.

CE	BW	WW	YW	MIik	MCE	MTL	SC	CW	REA	Fat	Marb
0.6	2.1	26	51	8	2.8	21	0.6	9	0.32	0.015	-0.02

Lot
11

LCR ROYAL RAMSEY 386 PLD

BD: 3/18/15 Reg# M885241 Polled SC: 44 CM
BW: 91 ADJ WW: 705 ADG: 3.7 lbs

Sire: M838590 LCR ROYAL TRADITION 125 PLD
 M633377 M6 GRID MAKER 104 PET
 M685500 EC NO DOUBT 2022 P
 F956614 EC LADY DUKE 2022 P
 M726505 EATONS ROYAL DYNASTY 6164
 F1130314 CR MS REGAL DYNASTY 125 PLD
 F1059953 CR MISS PARTNER 420 PLD
 M411450 LT WYOMING WIND 4020 PLD
 M797960 CR COWBOY WIND 999B PLD
 F857422 CHEWACK SHURRTOP COWGIRL

Dam: F1195791 LCR MS RAMEY WIND 386 PLD
 M476538 UI PARTNER 842
 F992814 CR MISS RAMSEY 315 PLD
 F857427 CHEWACK MISS MAC 800



LCR HIGHPOINT 314 PLD Sire of Lots 12 & 13

Good weaning weight and a very large scrotal. A very correct made bull that will travel cover your mature cows.

CE	BW	WW	YW	MIlk	MCE	MTL	SC	CW	REA	Fat	Marb
-0.8	2.3	26	51	9	1.0	22	0.6	10	0.30	0.019	-0.03

Lot
12

LCR HIGHLIGHT 3038 PLD

BD: 3/17/15 Reg# M885240 Polled SC: 39 cm
BW: 70 ADJ WW: 707 ADG: 5 lbs

Sire: M826773 LCR HIGHPOINT 314PLD
 M633377 M6 GRID MAKER 104 PET
 M685500 EC NO DOUBT 2022 P
 F956614 EC LADY DUKE 2022 P
 M621585 CR BESTOFALL 709 PLD
 F992815 CR MISS PRIME 314 PLD
 F908068 CHEWACK PRIME CUP 517
 M766557 EATONS GAUGE 00447
 M796058 EATONS SINGLE GAUGE 00447
 F1072018 EATONS VALLI 71046

Dam: F1178908 EATONS MISS ALOE 31038
 M706270 EATONS WINNER 5231
 F1114634 EATONS ALOE 9917
 F1003231 EATONS MISS ALOE 4552



LOT 12

Don't miss this bull. A calving ease bull with good weaning. He is the top gaining two year old bull at 5 pounds a day! He is out of a very nice first calf heifer purchased from Eaton Charolais. He will add length and depth of rib to your calves.

CE	BW	WW	YW	MIlk	MCE	MTL	SC	CW	REA	Fat	Marb
4.6	-0.6	18	42	12	5.7	21	0.6	10	0.23	0.014	0.04

Lot
13

LCR/ZB CHEWUCH BEAVER 3162

BD: 3/25/15 Reg# M883819 DEHORND SC: 41 cm
BW: 85 ADJ WW: 776 ADG: 3.6 lbs

Sire: M826773 LCR HIGHPOINT 314PLD
 M633377 M6 GRID MAKER 104 PET
 M685500 EC NO DOUBT 2022 P
 F956614 EC LADY DUKE 2022 P
 M621585 CR BESTOFALL 709 PLD
 F992815 CR MISS PRIME 314 PLD
 F908068 CHEWACK PRIME CUP 517
 M652197 EATONS VALUE ROYAL 2101P
 M726505 EATONS ROYAL DYNASTY 6164
 F954824 EATONS MISS CADET 2899

Dam: F1172790 EATONS BEAVER 30618 POLLED
 M766227 EATONS WARRANTY 8289
 F1146345 EATONS BEAVER 10621
 F1048957 EATONS BEAVER 6781



LOT 13

Moderate birth weight and the highest weaning weight of his contemporary group! He is out of a very nice Royal Dynasty first calf heifer purchased from Eaton Charolais. Deep ribbed, wide topped performance bull!

CE	BW	WW	YW	MIlk	MCE	MTL	SC	CW	REA	Fat	Marb
0.6	1.3	27	56	14	3.0	27	0.5	12	0.44	0.004	0.01

Lot
14

LCR ADVANTAGE 727 PLD

**BD: 7/10/15 Reg# M885865 Poll/scurs SC: 41 cm
BW: 85 ADJ WW: 686 ADG: 4.3 lbs**

Sire: M633377 M6 GRID MAKER 104 PET
M685500 EC NO DOUBT 2022 P
F956614 EC LADY DUKE 2022 P
M827110 LCR ADVANTAGE 625 PLD
M630187 CR MR FASTTRACK 718 PLD
F1131481 CR MS FASTMAC 625C
F1130226 CR MISS PARTNER 132 PLD
M653776 P-3 WYOMING WIND 9-186J
M731728 VVCR WYOMING UNLMTD 4128
F845652 VVCR UNLIMITED DUKE 8575
Dam: F1130233 CR MS HOT UNLIMITED 727 P
M301495 4-L UNLIMITED YL13POLLED
F772287 RC MISS YL 6132
F696382 RC MISS ABC 4032

CE	BW	WW	YW	MIik	MCE	MTL	SC	CW	REA	Fat	Marb
7.7	-1.8	12	22	2	6.7	8	0.4	8	0.17	0.010	0.00

A nice calving ease coming 2 year old bull with a large scrotal. He is long and thick topped with extra growth. Gaining 4.3 pounds a day. Top 15% for BWT, CE and MCE EPD.

Lot
15

LCR ROYAL ADVANTAGE 125 PLD

**BD: 7/15/15 Reg# M885231 Polled SC: 38.5 cm
BW: 88 ADJ WW: 775 ADG: 4 lbs**

Sire: M633377 M6 GRID MAKER 104 PET
M685500 EC NO DOUBT 2022 P
F956614 EC LADY DUKE 2022 P
M827110 LCR ADVANTAGE 625 PLD
M630187 CR MR FASTTRACK 718 PLD
F1131481 CR MS FASTMAC 625C
F1130226 CR MISS PARTNER 132 PLD
M652197 EATONS VALUE ROYAL 2101P
M726505 EATONS ROYAL DYNASTY 6164
F954824 EATONS MISS CADET 2899
Dam: F1130314 CR MS REGAL DYNASTY 125 PLD
M476538 UI PARTNER 842
F1059953 CR MISS PARTNER 420 PLD
F901972 CR MISS ELIMINATOR 003 P

CE	BW	WW	YW	MIik	MCE	MTL	SC	CW	REA	Fat	Marb
4.4	-0.7	22	45	14	3.5	25	0.5	11	0.34	0.009	-0.03

A good soggy deep ribbed 20 month old bull with a moderate birth weight and the highest weaning weight at the top of his contemporary group! Out of A really good milking Royal Dynasty daughter .

Lot
16

LCR ADVANTAGE 224 PLD

**BD: 7/21/15 Reg# M885865 Polled SC: 35 cm
BW: 89 ADJ WW: 713 ADG: 3 lbs**

Sire: M633377 M6 GRID MAKER 104 PET
M685500 EC NO DOUBT 2022 P
F956614 EC LADY DUKE 2022 P
M827110 LCR ADVANTAGE 625 PLD
M630187 CR MR FASTTRACK 718 PLD
F1131481 CR MS FASTMAC 625C
F1130226 CR MISS PARTNER 132 PLD
M620193 LT ASSERTION 1277 P
M758009 AVILAS ASSERTION 8151
F994201 BCC MAIDEN 020-4063
Dam: F1162980 LCR LADY ASSERT 224 PLD
M731728 VVCR WYOMING UNLMTD 4128
F1131594 CR MS WYO DURY 753 PLD
F906743 CHEWACK DURY GIRL 719

CE	BW	WW	YW	MIik	MCE	MTL	SC	CW	REA	Fat	Marb
4.1	0.0	17	30	9	4.5	9	0.3	9	0.14	0.014	0.07

Another moderate framed calving ease son out of the Advantage bull. He has a nice smooth head and shoulders. His dam descends from a calving ease bloodlines.



Lundgren Charolais sired commercial calves, from a happy customer in Eagle, ID

Reference Sire



EC FIRST CLASS 5027 PLD

EC FIRST CLASS 5027 PLD

BD: 3/28/11 Reg# M803412 Homozygous Polled
BW: 92 ADJ WW: 816 ADJ YW: 1475

Sire: M749278 RAILE 2250 T077
M610325 SCRSUPERCHARLIE0767PD
F973130 RC FRANCESCA 0251
F822448 RC FRANCESCA 9855
M355527 RC BUDSMYDAD 225 POLLED
M498475 EC NEW TREND 6G
F603972 MISS EC DUKE 452-D

Dam: F1025937 EC TRENDY LADY 5027 P
M427404 LTC PENETRATOR 5224 PLD
F800896 EC PENETRATOR 95D PLD
RF686840 LTC SANDRA 533 POLLED

CE	BW	WW	YW	MIik	MCE	MTL	SC	CW	REA	Fat	Marb
1.5	2.6	43	74	8	6.4	29	0.2	29	0.82	-0.008	0.00

EC First Class is a bull we purchased from Eggleston Charolais in their 2012 bull sale. His calves are very long and smooth at birth with great calving ease and vigor! His calves consistently wean at the top of their contemporary groups, passing on added growth, fleshability, and correctness in his offspring. His daughters have even quartered udders with great teat conformation. He is packed with loads of performance passing it to his offspring with a REA 16.88 ; he has a thick butterfly topline, and is deep, very long and powerful. He ranks in the top 7% for weaning weight , 15% yearling weight , 7% for Carcass weight & 3% REA EPD.

Lot
17

LCR FIRST CLASS 914 PLD

BD: 2/17/16 Reg# M886955 Poll/scurs SC: 36 cm
BW: 97 ADJ WW: 829 ADJ YW: 1171 ADG: 3.5 lbs

Sire: M803412 EC FIRST CLASS 5027 PLD
M498475 EC NEW TREND 6G
F1025937 EC TRENDY LADY 5027 P
F800896 EC PENETRATOR 95D PLD
M653776 P-3 WYOMING WIND 9-186J
M731728 VVCR WYOMING UNLMTD 4128
F845652 VVCR UNLIMITED DUKE 8575

Dam: F1163005 LCR FANCY 914 PLD
M601306 CR MR PERFECT MAC 02 PLD
F934853 CR SHOW LADY 004 PLD
F924049 CR MISS MAC 341 PLD

CE	BW	WW	YW	MIik	MCE	MTL	SC	CW	REA	Fat	Marb
-4.5	1.8	37	57	5	-0.6	23	0.4	21	0.54	-0.003	-0.03

A very long growthy bull with an exceptional weaning weight! He will add length and pounds to your calf crop. Top 15% for WWT EPD.

Lot
19

LCR CLASSIC WIND 787 PLD

BD: 1/27/16 Reg# M885522 Polled SC: 36.5 cm
BW: 87 ADJ WW: 740 ADJ YW: 1006 ADG: 2.8 lbs

Sire: M803412 EC FIRST CLASS 5027 PLD
M498475 EC NEW TREND 6G
F1025937 EC TRENDY LADY 5027 P
F800896 EC PENETRATOR 95D PLD
M653776 P-3 WYOMING WIND 9-186J
M731728 VVCR WYOMING UNLMTD 4128
F845652 VVCR UNLIMITED DUKE 8575

Dam: F1145336 CR TWIN WIND MAC 787
M314893 UI SIR MAC 023
F857427 CHEWACK MISS MAC 800
F536361 VEL VALENTINE 895

CE	BW	WW	YW	MIik	MCE	MTL	SC	CW	REA	Fat	Marb
-0.5	2.0	25	39	6	3.4	18	0.4	12	0.27	0.003	-0.10

Lot
18

LCR FIRST CLASS 830 PLD

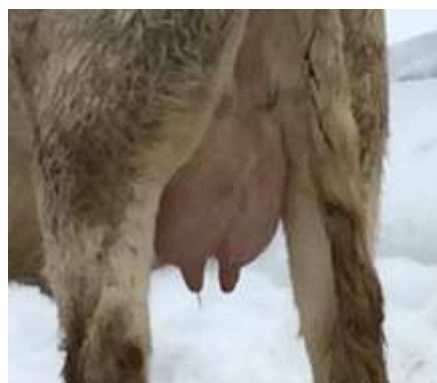
BD: 2/21/16 Reg# M886956 Poll/scurs SC: 38 cm
BW: 95 ADJ WW: 728 ADJ YW: 1104 ADG: 3.8 lbs

Sire: M803412 EC FIRST CLASS 5027 PLD
M498475 EC NEW TREND 6G
F1025937 EC TRENDY LADY 5027 P
F800896 EC PENETRATOR 95D PLD
M694179 VVCR WHITEHOT PRESTIGE
M778144 CR COWBOY 999 PLD
F857422 CHEWACK SHURRTOP COWGIRL

Dam: F1130240 CR MS MAC N HOT GIRL 830
M314893 UI SIR MAC 023
F924048 CR MISS MAC 336 PLD
F437726 MISS DURYEA 427

CE	BW	WW	YW	MIik	MCE	MTL	SC	CW	REA	Fat	Marb
-4.6	1.8	24	43	5	-1.6	17	0.1	14	0.23	-0.001	0.1

A long smooth extra long yearling. His dam is very productive fertile female in our herd. Another Bull that will add performance at weaning time!



Udder of a 1st calf heifer Sired by EC First Class

Moderate birth weight bull, from a maternal calving ease bloodline. Don't overlook his excellent weaning weight!

Lot
20

LCR FIRST DOWN M74 PLD

BD: 1/27/15 Reg# M854599 Polled SC: 44 cm
BW: 96 ADJ WW: 703 ADG: 4.6 lbs

M658950 FINKS 2250 OF 3575D040ET
 M749278 RAILE 2250 T077
 F973130 RC FRANCESCA 0251
 Sire: M803412 EC FIRST CLASS 5027 PLD
 M498475 EC NEW TREND 6G
 F1025937 EC TRENDY LADY 5027 P
 F800896 EC PENETRATOR 95D PLD
 M231464 HCR EXONERATOR POLLED
 M319454 ASC ELIMINATOR 032
 F397495 MISS HCR MAC 2308
 Dam: F1054520 4C'S NADINE M74
 M301930 LT UNLIMITED EASE 9108
 F756295 EASE'S MISS CINDY 4C M09
 F645703 MISS RASCAL'S PRINCESS



First down is an impressive powerhouse and a deep sided butterfly topped son of First Class. Long, tall and smooth at birth, his dam is a very productive good milking daughter by the great calving ease sire ASC Eliminator. His maternal brother is LOT 2. He has a large scrotal, one of the top gaining 2 year olds, and ranks in the top 15% for REA EPD!

CE	BW	WW	YW	MIlK	MCE	MTL	SC	CW	REA	Fat	Marb
2.2	2.0	33	54	11	5.8	27	0.0	20	0.64	0.000	-0.12

Lot
21

LCR FIRST CLASS 007 PLD

BD: 2/15/15 Reg# M868936 Polled SC: 42.5 cm
BW: 80 ADJ WW: 680 ADG: 3.6 lbs

M658950 FINKS 2250 OF 3575D040ET
 M749278 RAILE 2250 T077
 F973130 RC FRANCESCA 0251
 Sire: M803412 EC FIRST CLASS 5027 PLD
 M498475 EC NEW TREND 6G
 F1025937 EC TRENDY LADY 5027 P
 F800896 EC PENETRATOR 95D PLD
 M202427 WCR SIR FAB MAC 809
 M314893 UI SIR MAC 023
 F513602 MISS UI PEGGY 809
 Dam: F908425 CHEWACK MISS MAC 008 PLD
 M234689 JD POKER KING 1135
 F490151 VEL PAM 755
 F437245 VEL PAM 455



A low birth weight son of First class and the last calf out of a hardy 15 year old Mac 809 bred female.

CE	BW	WW	YW	MIlK	MCE	MTL	SC	CW	REA	Fat	Marb
2.4	-0.6	17	26	6	2.3	14	0.0	6	0.26	-0.007	0.02

Lot
22

LCR FIRST CLASS 531 PLD

BD: 4/05/15 Reg# M885243 Polled SC: 43 cm
BW: 95 ADJ WW: 703 ADG: 3.8 lbs

M658950 FINKS 2250 OF 3575D040ET
 M749278 RAILE 2250 T077
 F973130 RC FRANCESCA 0251
 Sire: M803412 EC FIRST CLASS 5027 PLD
 M498475 EC NEW TREND 6G
 F1025937 EC TRENDY LADY 5027 P
 F800896 EC PENETRATOR 95D PLD
 M653774 P-3 WHITEHOT LAD 9-86J
 M694179 VVCR WHITEHOT PRESTIGE
 F643136 VVCR PRESTIGE EXPT 2150
 Dam: F1109192 CR MS HOT MAC 531 PLD
 M314893 UI SIR MAC 023
 F924048 CR MISS MAC 336 PLD
 F437726 MISS DURYEA 427



Deep, thick and stylish, this two year old bull will add performance and fertility to your program with an impressive 43 cm scrotal.

CE	BW	WW	YW	MIlK	MCE	MTL	SC	CW	REA	Fat	Marb
-1.1	2.5	28	48	7	2.5	21	0.2	18	0.44	-0.007	0.04

Lot

23

LCR FIRST CLASS 300 PLD

**BD: 4/11/15 Reg# M885239 Polled SC: 44 cm
BW: 90 ADJ WW: 754 ADG: 4.3 lbs**

M658950 FINKS 2250 OF 3575D040ET
M749278 RAILE 2250 T077
F973130 RC FRANCESCA 0251
Sire: M803412 EC FIRST CLASS 5027 PLD
M498475 EC NEW TREND 6G
F1025937 EC TRENDY LADY 5027 P
F800896 EC PENETRATOR 95D PLD
M225504 BCR POLLED UNLIMITED 003
M301930 LT UNLIMITED EASE 9108
F338075 PP MISS SHANDY 214 R194
Dam: F992824 CR MISS EASE 300 PLD
M314893 UI SIR MAC 023
F961059 CR MISS MAC 025 PLD
F934856 CHEWACK PRIMO LADY 606 P



LOT 23

A nice long thick topped performance bull ranking #2 for weaning weight in his contemporary group. He is the last calf of a very productive 12 year old LT Unlimited Ease daughter.

CE	BW	WW	YW	MIik	MCE	MTL	SC	CW	REA	Fat	Marb
2.5	1.3	34	55	7	0.3	24	0.3	15	0.40	-0.002	0.02

Lot

24

LCR FIRST CLASS 221 PLD

**BD: 7/16/15 Reg# M885233 Polled SC: 39 cm
BW: 89 ADJ WW: 749 ADG: 4 lbs**

M658950 FINKS 2250 OF 3575D040ET
M749278 RAILE 2250 T077
F973130 RC FRANCESCA 0251
Sire: M803412 EC FIRST CLASS 5027 PLD
M498475 EC NEW TREND 6G
F1025937 EC TRENDY LADY 5027 P
F800896 EC PENETRATOR 95D PLD
M620193 LT ASSERTION 1277 P
M758009 AVILAS ASSERTION 8151
F994201 BCC MAIDEN 020-4063
Dam: F1162977 LCR MISS PERFECT ASSET 221 PLD
M694179 VVCR WHITEHOT PRESTIGE
F1129894 CR MS PERFECT WHITE 021
F908511 CHEWACK PERFECT VEL 404



LOT 24

A moderate birth weight 20 month old bull, that has been a standout, with his weaning performance, ADG and extra length. His dam is a really nice moderate framed cow out of our calving ease Assertion bull.

CE	BW	WW	YW	MIik	MCE	MTL	SC	CW	REA	Fat	Marb
2.0	1.6	31	52	7	5.2	22	0.3	15	0.40	-0.001	0.03

Lot

25

LCR FIRST CLASS 228 PLD

**BD: 7/27/15 Reg# M885234 Poll/scur SC: 40 cm
BW: 87 ADJ WW: 754 ADG: 3.0 lbs**

M658950 FINKS 2250 OF 3575D040ET
M749278 RAILE 2250 T077
F973130 RC FRANCESCA 0251
Sire: M803412 EC FIRST CLASS 5027 PLD
M498475 EC NEW TREND 6G
F1025937 EC TRENDY LADY 5027 P
F800896 EC PENETRATOR 95D PLD
M729094 SCHURRTOP JK 5001-4244 P
M779679 RAILE 4244 V240
F1049849 RC NICHOLE 0767 0631
Dam: F1177449 LCR MISS PERFECT 228 PLD
M731728 VVCR WYOMING UNLMTD 4128
F1145337 CR MISS WYOMINGS PRIME 989
F1130022 CR MISS PRIME PARTY 526 P



LOT 25

Another moderate birth weight First class coming two year old son with ranking #2 in his contemporary group for weaning weight with a ratio of 105.

CE	BW	WW	YW	MIik	MCE	MTL	SC	CW	REA	Fat	Marb
0.6	1.6	22	39	12	4.6	23	0.5	21	0.60	0.001	0.01

Reference Sire



AVILAS ASSERTION 8151

BD: 4/3/08 Reg# M758009 Polled
BW: 88 ADJ WW: 683 ADJ YW: 1101

Sire: M620193 LT ASSERTION 1277 P
 M422374 EATONS ASSERTIVE 4297
 M514354 EATONS ASSERT 9171
 F787313 EATONS MISS GILMAN 6549
 M469401 SPARROWS ALLIANCE 513G
 F852572 LT ALLI'S CLASS 9140 P
 F765353 LT PRAIRIE MAID 6021 PLD
 M301930 LT UNLIMITED EASE 9108
 M630662 B C C CROWN ROYAL 16-152
 F853072 BCC MISS S DUKE 16 99
 Dam: F994201 BCC MAIDEN 020-4063
 M460645 WCR PRIME CUT 764 PLD
 F903860 BCC MISS PCUT 8050-020
 F520124 LT PRAIRIE MAIDEN 8050

CE	BW	WW	YW	MIK	MCE	MTL	SC	CW	REA	Fat	Marb
9.2	-2.0	13	29	3	7.1	10	0.3	4	-0.06	0.024	0.22

We purchased Avilas Assertion at the 2010 Red Bluff Bull and Gelding Sale in Red Bluff, Ca. His Dam is a medium frame, very correct, deep-sided cow with an exceptionally level udder and perfect teat size. Assertion is an extremely docile, deep, thick, long and correct medium frame bull. We used Assertion on our replacement heifers for two years and still us him to AI a few heifers every year. He is a very easy calving sire ranking in the Top 15% for BW & 10% CE EPD, as well as being in the Top 8% for Marbling. His calves have loads of vigor and are up nursing before they are licked off! His daughters have beautiful udders and produce lots of milk. He has consistently produced uniform calves that are well rounded and perform well.

Lot
26

LCR ASSERTION'S CHOICE 746 PLD

BD: 2/29/16 Reg# M886532 Polled SC: 35 cm
BW: 90 ADJ WW: 888 ADJ YW: 1264 ADG: 3.8 lbs

Sire: M758009 AVILAS ASSERTION 8151
 M514354 EATONS ASSERT 9171
 M620193 LT ASSERTION 1277 P
 F852572 LT ALLI'S CLASS 9140 P
 M630662 B C C CROWN ROYAL 16-152
 F994201 BCC MAIDEN 020-4063
 F903860 BCC MISS PCUT 8050-020
 M653774 P-3 WHITEHOT LAD 9-86J
 M694179 VVCR WHITEHOT PRESTIGE
 F643136 VVCR PRESTIGE EXPT 2150
 Dam: F1130238 CR MS HOT MAC 746 PLD
 M433129 CHEWACK INTIMIDATOR 503
 F908423 CR MISS TWIN MAC 101 PLD
 F863756 MISS CH LADY MAC 02 PLD

Lot
27

LCR ASSERTION 150 PLD

BD: 3/06/16 Reg# M886961 Polled SC: 34 cm
BW: 96 ADJ WW: 710 ADJ YW: 1048 ADG: 3.4 lbs

Sire: M758009 AVILAS ASSERTION 8151
 M514354 EATONS ASSERT 9171
 M620193 LT ASSERTION 1277 P
 F852572 LT ALLI'S CLASS 9140 P
 M630662 B C C CROWN ROYAL 16-152
 F994201 BCC MAIDEN 020-4063
 F903860 BCC MISS PCUT 8050-020
 M411450 LT WYOMING WIND 4020 PLD
 M797960 CR COWBOY WIND 999B PLD
 F857422 CHEWACK SHURRTOP COWGIRL
 Dam: F1146059 CR MISS PRIME WIND 150 PLD
 M476538 UI PARTNER 842
 F1130022 CR MISS PRIME PARTY 526 P
 F1110356 CR MS PERFECT PRIME 118 P

CE	BW	WW	YW	MIK	MCE	MTL	SC	CW	REA	Fat	Marb
-1.1	2.7	29	49	4	3.8	18	0.3	10	0.19	0.010	0.06

CE	BW	WW	YW	MIK	MCE	MTL	SC	CW	REA	Fat	Marb
3.8	1.5	14	28	4	4.1	11	0.4	2	0.10	0.020	0.16

A long smooth shouldered bull that excelled at weaning.

LCR ASSERTIONS CHOICE has been a standout since he was just a few weeks old. He is easy fleshing, extra long, big topped, deep and even all the way through with a powerful hip. He is one of the heaviest (not creep fed) weaning bulls we have raised. He is #1 in his contemporary group for weaning weight(119 Ratio) and yearling weight (114 Ratio). His dam is a thick made powerful Whitehot x Mac 2244 bred female with an exceptional udder. He has a unique pedigree to most bulls today. Don't miss out on this potential herd sire.



Lot
28

LCR ASSERTION 730 PLD

BD: 3/20/15 Reg# M885796 Polled SC: 40 cm
BW: 88 ADJ WW: 682 ADG: 3.9 lbs

Sire: M758009 AVILAS ASSERTION 8151
 M630662 B C C CROWN ROYAL 16-152
 F994201 BCC MAIDEN 020-4063
 F903860 BCC MISS PCUT 8050-020
 M653776 P-3 WYOMING WIND 9-186J
 M731728 VVCR WYOMING UNLMTD 4128
 F845652 VVCR UNLIMITED DUKE 8575

Dam: F1130230 CR MS WYOLIMINATOR 730 P
 M319454 ASC ELIMINATOR 032
 F901972 CR MISS ELIMINATOR 003 P
 F862078 WCR MISS CHEWACK MAC 807

CE	BW	WW	YW	MIlK	MCE	MTL	SC	CW	REA	Fat	Marb
4.8	-0.6	11	19	4	5.3	9	0.4	3	0.03	0.017	0.08



This Moderate framed thick made calving ease Assertion son will catch your eye in the pen. He is very correct free moving.

Lot
29

LCR ASSERTION 106 PLD

BD: 4/08/15 Reg# M885229 Polled SC: 43.5 cm
BW: 85 ADJ WW: 622 ADG: 3.7 lbs

Sire: M758009 AVILAS ASSERTION 8151
 M630662 B C C CROWN ROYAL 16-152
 F994201 BCC MAIDEN 020-4063
 F903860 BCC MISS PCUT 8050-020
 M319454 ASC ELIMINATOR 032
 M476538 UI PARTNER 842
 F695047 MISS UI ROSE 439

Dam: F1131668 CR TWIN PARTNER 106 PLD
 M375143 LHJR CX PRIMETIME 302
 F926642 CR MISS BEAU COW 617 PLD
 F473840 VEL DUCHESS 660

CE	BW	WW	YW	MIlK	MCE	MTL	SC	CW	REA	Fat	Marb
7.1	-2.2	6	13	4	4.7	7	0.2	3	0.00	0.012	0.09



Moderate framed, extra calving ease and a large scrotal. He is the last calf out of a very productive 14 year old dam. You'll sleep easy at night with his calves. Top 15% for BWT and 20% for CE EPD.

Lot
30

LCR ASSERTION 135 PLD

BD: 4/10/15 Reg# M885230 Polled SC: 41 cm
BW: 75 ADJ WW: 645 ADG: 3.9 lbs

Sire: M758009 AVILAS ASSERTION 8151
 M630662 B C C CROWN ROYAL 16-152
 F994201 BCC MAIDEN 020-4063
 F903860 BCC MISS PCUT 8050-020
 M702060 HACC TWIN PROFIT479TWPOL
 M785795 4C'S CHEWACK BOUND M91
 F799174 MISS CARISSA PERFECT 4C

Dam: F1143235 CR MS WHITE PROFIT 135 PLD
 M694179 VVCR WHITEHOT PRESTIGE
 F1131596 CR MS P WHITE 902 PLD
 F908511 CHEWACK PERFECT VEL 404

CE	BW	WW	YW	MIlK	MCE	MTL	SC	CW	REA	Fat	Marb
7.9	-2.2	10	20	3	7.2	7	0.4	7	0.00	0.015	0.12

A thick deep sided bull with extra calving ease and a good scrotal. Top 15% for BWT and CE and 10% for MCE EPD!

Lot
31

LCR HOT ASSERTION 200 PLD

BD: 6/30/15 Reg# M885237 Polled SC: 41 cm
BW: 74 ADJ WW: 636 ADG: 3.6 lbs

Sire: M758009 AVILAS ASSERTION 8151
 M630662 B C C CROWN ROYAL 16-152
 F994201 BCC MAIDEN 020-4063
 F903860 BCC MISS PCUT 8050-020
 M653774 P-3 WHITEHOT LAD 9-86J
 M694179 VVCR WHITEHOT PRESTIGE
 F643136 VVCR PRESTIGE EXPT 2150

Dam: F1196052 LCR MISS WHITEHOT 200 PLD
 M314744 LHD MR PERFECT Y416
 F1110983 CR LAST PERFECTION 620 P
 F857425 CHEWACK MISS MAC YL 901

CE	BW	WW	YW	MIlK	MCE	MTL	SC	CW	REA	Fat	Marb
5.1	-1.6	7	15	4	5.1	8	0.4	-	-	-	-

Calving ease bull! Smooth head and shoulders. And stout made.

Reference Sire



EC SILVER DISTANCE 948 PLD

BD: 4/9/11 Reg# M803623 Polled
BW: 80 ADJ WW: 729 ADJ YW: 1345

Sire: M775589 EC SILVER DISTANCE 740 PLD
 M665495 LT SILVER YIELD 3196 P
 M707559 LT SILVER DISTANCE 5342P
 F852542 LT MATTIE 9026 POLLED
 M686616 LT WESTERN EDGE 4057 PLD
 F1073105 GC 4L MS WINDS EDGE 740 P
 F956362 CRC MISS WIND 2412
 M620193 LT ASSERTION 1277 P
 M686569 LT BLUEGRASS 4017 P
 F956080 LT PEARL'S BREEZE 2236 P

Dam: F1106477 EC BLUE MOON 948 PLD
 M620193 LT ASSERTION 1277 P
 F1025893 EC MISS ASSERTION 53 P
 F980731 BOW MS WIND 387N POLL

CE	BW	WW	YW	MIK	MCE	MTL	SC	CW	REA	Fat	Marb
4.7	0.0	19	33	16	4.5	25	0.2	-4	0.06	0.0015	0.12

EC Silver Distance is a calving ease bull we picked from Eggleston Charolais 2012 bull sale to use on our heifers. He has proven to be a calving ease sire. Silver is straight a top-lined, deep sided smooth shouldered bull. With his MILK EPD the top 20%, Silver's daughters have been producing well with good udder conformation and docile dispositions.

Lot
32

LCR SILVER WIND 909 PLD TWIN
BD: 3/25/15 Reg# M885246 Polled SC: 40 cm
BW: 75 ADJ WW: 638 ADG: 2.4 lbs

Sire: M803623 EC SILVER DISTANCE 948 PLD
 M707559 LT SILVER DISTANCE 5342P
 M775589 EC SILVER DISTANCE 740 PLD
 F1073105 GC 4L MS WINDS EDGE 740 P

Dam: F1145330 CR WYO MS VANDALWIND 909
 M411450 LT WYOMING WIND 4020 PLD
 F1130228 CR MS VANDAL WIND 424 P
 F862080 CHEWACK MISS VANDAL 346

CE	BW	WW	YW	MIK	MCE	MTL	SC	CW	REA	Fat	Marb
7.6	-2.1	10	18	10	6.0	14	0.5	-1	0.13	0.019	0.05

A good thick moderate framed athletic bull. Top 15% for BWT and CE EPD!

Lot
33

LCR SILVER DISTANCE 138 PLD
BD: 3/20/15 Reg# M885236 Polled SC: 37 cm
BW: 84 ADJ WW: 717 ADG: 3.3 lbs

Sire: M803623 EC SILVER DISTANCE 948 PLD
 M707559 LT SILVER DISTANCE 5342P
 M775589 EC SILVER DISTANCE 740 PLD
 F1073105 GC 4L MS WINDS EDGE 740 P

Dam: F1147006 CR WIND ELIMINATOR 138 P
 M476538 UI PARTNER 842
 F1131668 CR TWIN PARTNER 106 PLD
 F926642 CR MISS BEAU COW 617 PLD

CE	BW	WW	YW	MIK	MCE	MTL	SC	CW	REA	Fat	Marb
4.1	-0.2	16	28	8	4.1	16	0.2	-2	0.09	0.013	0.05



This bull is exceptionally deep and thick with straight wide topline. He is docile with a good weaning weight and added calving ease!

Lot
34

LCR MR SILVER WIND 134 PLD

BD: 4/06/15 Reg# M885235 Polled SC: 43.5 cm
BW: 96 ADJ WW: 706 ADG: 3.6 lbs

Sire: M707559 LT SILVER DISTANCE 5342P
M775589 EC SILVER DISTANCE 740 PLD
F1073105 GC 4L MS WINDS EDGE 740 P
M803623 EC SILVER DISTANCE 948 PLD
M686569 LT BLUEGRASS 4017 P
F1106477 EC BLUE MOON 948 PLD
F1025893 EC MISS ASSERTION 53 P
M411450 LT WYOMING WIND 4020 PLD
M797960 CR COWBOY WIND 999B PLD
F857422 CHEWACK SHURRTOP COWGIRL

Dam: F1143392 CR MS PERFECT WIND 134
M601306 CR MR PERFECT MAC 02 PLD
F1110356 CR MS PERFECT PRIME 118 P
F992806 CR MISS PRIMEMAC 608

CE	BW	WW	YW	MIK	MCE	MTL	SC	CW	REA	Fat	Marb
-3.5	3.2	24	40	10	0.3	22	0.4	2	0.08	0.014	0.05



This bull will put extra frame and length in your calf crop with out sacrificing muscling and thickness. With a powerful hip and a large scrotal he will cover your cows and then some!

Lot
35

LCR SILVER STAR 833 PLD

BD: 4/11/15 Reg# M885244 Polled SC: 42.5 cm
BW: 79 ADJ WW: 709 ADG: 4.5 lbs

Sire: M707559 LT SILVER DISTANCE 5342P
M775589 EC SILVER DISTANCE 740 PLD
F1073105 GC 4L MS WINDS EDGE 740 P
M803623 EC SILVER DISTANCE 948 PLD
M686569 LT BLUEGRASS 4017 P
F1106477 EC BLUE MOON 948 PLD
F1025893 EC MISS ASSERTION 53 P
M653776 P-3 WYOMING WIND 9-186J
M731728 VVCR WYOMING UNLMTD 4128
F845652 VVCR UNLIMITED DUKE 8575

Dam: F1130355 CR MS WYO DURYGIRL 833 P
M375143 LHJR CX PRIMETIME 302
F906743 CHEWACK DURY GIRL 719
F437727 MISS DURYEA 428

CE	BW	WW	YW	MIK	MCE	MTL	SC	CW	REA	Fat	Marb
5.9	-1.5	10	17	9	6.0	14	0.4	-1	0.04	0.009	0.06



Silverstar is one of the deepest thick made bulls in the sale! He has incredible built in calving ease, out of a moderate framed fertile calving ease bred female. He has a large scrotal and is one of the top gaining 2 year old bulls. You won't want to miss him on sale day!

Lot
36

LCR SILVER DYNASTY 220 PLD

BD: 4/18/15 Reg# M885232 Polled SC: 40 cm
BW: 75 ADJ WW: 706 ADG: 3.5 lbs

Sire: M707559 LT SILVER DISTANCE 5342P
M775589 EC SILVER DISTANCE 740 PLD
F1073105 GC 4L MS WINDS EDGE 740 P
M803623 EC SILVER DISTANCE 948 PLD
M686569 LT BLUEGRASS 4017 P
F1106477 EC BLUE MOON 948 PLD
F1025893 EC MISS ASSERTION 53 P
M652197 EATONS VALUE ROYAL 2101P
M726505 EATONS ROYAL DYNASTY 6164
F954824 EATONS MISS CADET 2899

Dam: F1186347 LCR MISS RAMSEY'S DYNASTY 220
M476538 UI PARTNER 842
F992809 CR MISS RAMSEY 317 PLD
F934849 CR MS PRIME 615

CE	BW	WW	YW	MIK	MCE	MTL	SC	CW	REA	Fat	Marb
5.5	-1.3	12	28	19	4.2	25	0.4	1	0.21	0.006	0.05

Extra calving ease, and good weaning weight out of a productive Royal Dynasty daughter.

Lot
37

LCR HOT SILVER 889 PLD

BD: 4/25/15 Reg# M885247 Polled SC: 40.5 cm
BW: 95 ADJ WW: 713 ADG: 4.4 lbs

Sire: M707559 LT SILVER DISTANCE 5342P
M775589 EC SILVER DISTANCE 740 PLD
F1073105 GC 4L MS WINDS EDGE 740 P
M803623 EC SILVER DISTANCE 948 PLD
M686569 LT BLUEGRASS 4017 P
F1106477 EC BLUE MOON 948 PLD
F1025893 EC MISS ASSERTION 53 P
M653774 P-3 WHITEHOT LAD 9-86J
M694179 VVCR WHITEHOT PRESTIGE
F643136 VVCR PRESTIGE EXPT 2150

Dam: F1110517 CR MISS HOTRAMSEY 889 P
M476538 UI PARTNER 842
F992809 CR MISS RAMSEY 317 PLD
F934849 CR MS PRIME 615

CE	BW	WW	YW	MIK	MCE	MTL	SC	CW	REA	Fat	Marb
3.2	0.8	18	30	10	3.5	19	0.2	-	-	-	-

Moderate framed, extra deep ribbed, and thick made. A good gaining bull on test out of a very nice cow that milks well!

Lot

38

LCR SILVER WIND 9903 PLD

BD: 5/06/15 Reg# M885228 Polled SC: 41 cm
BW: 76 ADJ WW: 711 ADG: 4.1 lbs

Sire: M707559 LT SILVER DISTANCE 5342P
M775589 EC SILVER DISTANCE 740 PLD
F1073105 GC 4L MS WINDS EDGE 740 P
M803623 EC SILVER DISTANCE 948 PLD
M686569 LT BLUEGRASS 4017 P
F1106477 EC BLUE MOON 948 PLD
F1025893 EC MISS ASSERTION 53 P
M778143 CR MAC N JACK 403 PLD
M797328 CR PRIME MAC 526 PLD
F1130022 CR MISS PRIME PARTY 526 P

Dam: F1137378 ROSIES WYOMING TULIP
M694179 VVCR WHITEHOT PRESTIGE
F1133079 CR WYOMING WILD ROSE 748
F1130227 CR MS MAC WIND 421 P



A stylish very smooth made calving ease bull with a great birth to weaning spread. Gaining over 4 pounds a day with a large scrotal.

CE	BW	WW	YW	MIik	MCE	MTL	SC	CW	REA	Fat	Marb
2.0	-0.6	21	34	11	2.3	22	0.4	-1	0.05	0.009	0.05

Lot

39

LCR SILVER COWBOY 193 PLD

BD: 7/12/15 Reg# M885226 Polled SC: 38 cm
BW: 89 ADJ WW: 716 ADG: 3.9 lbs

Sire: M707559 LT SILVER DISTANCE 5342P
M775589 EC SILVER DISTANCE 740 PLD
F1073105 GC 4L MS WINDS EDGE 740 P
M803623 EC SILVER DISTANCE 948 PLD
M686569 LT BLUEGRASS 4017 P
F1106477 EC BLUE MOON 948 PLD
F1025893 EC MISS ASSERTION 53 P
M694179 VVCR WHITEHOT PRESTIGE
M778144 CR COWBOY 999 PLD
F857422 CHEWACK SHURRTOP COWGIRL

Dam: F1144919 CR DOUBLE HOTTIE 193 PLD
M694179 VVCR WHITEHOT PRESTIGE
F1110518 CR HOTTIE MAC 542 PLD
F924045 CR MISS APRIL MAC PLD



Moderate birth weight, long and very smooth 20 month old bull. This bull is correct and put together the right way!

CE	BW	WW	YW	MIik	MCE	MTL	SC	CW	REA	Fat	Marb
2.0	0.7	14	27	11	2.5	18	0.1	0	0.05	0.010	0.10

Lot

40

LCR WHITE SILVER 970 PLD

BD: 7/24/15 Reg# M885245 Polled SC: 40.5 cm
BW: 86 ADJ WW: 731 ADG: 4.4 lbs

Sire: M707559 LT SILVER DISTANCE 5342P
M775589 EC SILVER DISTANCE 740 PLD
F1073105 GC 4L MS WINDS EDGE 740 P
M803623 EC SILVER DISTANCE 948 PLD
M686569 LT BLUEGRASS 4017 P
F1106477 EC BLUE MOON 948 PLD
F1025893 EC MISS ASSERTION 53 P
M653774 P-3 WHITEHOT LAD 9-86J
M694179 VVCR WHITEHOT PRESTIGE
F643136 VVCR PRESTIGE EXPT 2150

Dam: F1145333 CR MS WHITE PRIME 970 P
M476538 UI PARTNER 842
F925935 CR MISS PRIME PARTNER P
F857429 LADY CHEWACK PRIME 709



Moderate birth, big weaning weight, big scrotal and a top gaining bull! Top 25% for BWT EPD.

CE	BW	WW	YW	MIik	MCE	MTL	SC	CW	REA	Fat	Marb
5.8	-1.1	8	14	10	5.1	14	0.2	-2	0.02	0.003	0.08

Lot

41

LCR SILVER 844 PLD

BD: 1/10/15 Reg# Polled SC: 39 cm
BW: 95 ADJ WW: 660 ADG 4.6 lbs

Sire: M803623 EC SILVER DISTANCE 948 PLD
 M775589 EC SILVER DISTANCE 740 PLD
 F1073105 GC 4L MS WINDS EDGE 740 P
 M686569 LT BLUEGRASS 4017 P
 F1106477 EC BLUE MOON 948 PLD
 F1025893 EC MISS ASSERTION 53 P
 M653774 P-3 WHITEHOT LAD 9-86J
 M694179 VVCR WHITEHOT PRESTIGE
 F643136 VVCR PRESTIGE EXPT 2150

Dam: 844 CHAROLAIS X
 ANGUS/SIMMENTAL X

An impressive larger framed, very long 3/4 Charolais bull. One of the top gaining 2 year old bulls, he will add hybrid vigor and growth to your calves.

CE	BW	WW	YW	MIIK	MCE	MTL	SC	CW	REA	Fat	Marb
0.6	0.0	12	18	12	-1.0	18	0.2	0	0.11	0.008	0.05

Reference AI Sire



LT BLUEGRASS 4017 P

BD: 2/21/04 Reg# M686569 Polled
BW: 88 ADJ WW: 780 ADJ YW: 1374 Y SC: 36

Sire: M620193 LT ASSERTION 1277 P
 M422374 EATONS ASSERTIVE 4297
 M514354 EATONS ASSERT 9171
 F787313 EATONS MISS GILMAN 6549
 M469401 SPARROWS ALLIANCE 513G
 F852572 LT ALLI'S CLASS 9140 P
 F765353 LT PRAIRIE MAID 6021 PLD
 M300802 SCHURRTOP 5627
 M411450 LT WYOMING WIND 4020 PLD
 F634394 LT CHAP'S LADY 2170P

Dam: F956080 LT PEARL'S BREEZE 2236 P
 M225504 BCR POLLED UNLIMITED 003
 F792980 LT UNLIMITED PEARL 7053P
 F547882 4L MISS MAC YL11

CE	BW	WW	YW	MIIK	MCE	MTL	SC	CW	REA	Fat	Marb
8.4	-1.9	20	43	5	6.5	15	0.7	4	0.34	0.026	0.37

Bluegrass has become a household name the world over for calving ease, fleshing ability, breed average growth and carcass merit. With each passing year, his calving-ease, extraordinary doing-ability and all-around traits and are proven over and over again. EPD's rank in the top 15% CE and 1% for MARB!!

Lot

42

LCR BLUE CHARGER 3058 PLD

BD: 2/28/15 Reg# M868885 Polled SC: 44 cm
BW: 73 ADJ WW: 718 ADG: 3.6 lbs

Sire: M686569 LT BLUEGRASS 4017 P
 M514354 EATONS ASSERT 9171
 M620193 LT ASSERTION 1277 P
 F852572 LT ALLI'S CLASS 9140 P
 M411450 LT WYOMING WIND 4020 PLD
 F956080 LT PEARL'S BREEZE 2236 P
 F792980 LT UNLIMITED PEARL 7053P
 M726392 EATONS CHARGER 6105
 M810595 EATONS VER CHARGER 11611
 F981199 EATONS MISS VERA 3504

Dam: F1177958 EATONS MISS CHARLO 31058
 M745109 EATONS CHARGE 7156
 F1114337 EATONS CHARLO 9895
 F1049713 EATONS CHARLO 6661



A very nice deep sided correct, easy fleshing LT Bluegrass son out of a deep thick first calf heifer purchased from Eaton Charolais, with a huge, perfect udder. A half brother to the great LT Ledger, he has a 102 weaning ratio and is in the Top 10% for MCE and 7% for marbling EPD! Could use on heifers. TSI: 202.21

CE	BW	WW	YW	MIIK	MCE	MTL	SC	CW	REA	Fat	Marb
5.6	-0.4	20	49	10	7.2	20	0.9	7	0.33	0.005	0.26



HOW TO PARTICIPATE AS AN ABSENTEE BUYER

We have made preparations to bid and buy livestock through Superior Productions' "Call or Click-To-Bid" service for those unable to attend in person on sale day. **Please note that all of the lots in the sale will also be available for viewing online prior to sale day at www.superiorlivestock.com.**

HERE'S HOW IT WORKS

Turn in Bids Over the Phone. This is our traditional method of buying livestock. To get started simply go online to www.superiorlivestock.com and click on the tab titled "Register for a Buyer Number". Select the registration form for Superior Productions and print the registration form, fill it out and fax it in to Superior Productions at (817) 378-3380 with a signature on it, or scan and email the form to info@superiorauction.com. You can also mail it in to the address provided on the form. Upon receipt of this information Superior will call you with a buyer's number and the bid line phone number that you will use on sale day to place bids over the phone.

Click-To-Bid. This is Superior's online bidding platform for cattle buying. **Please note that high speed internet is required – this is not for dial-up or satellite internet.** Registration is free, but you must become a member of www.superiorclicktobid.com to sign up. Becoming a member is easy - just go to the homepage of www.superiorclicktobid.com and follow the out-lined steps to get started. Input your information and select a username and password. You will receive an e-mail confirming you are a member. From that point forward you just have to sign in and select the sale you would like to register for and once approved you will receive an e-mail confirming which sale you are now registered for.

Viewing the Auction. There are 2 places to view the sale broadcast live on the internet: www.superiorlivestock.com or www.superiorclicktobid.com. Just go to the home page of either website and select the auction. If you just want to watch the auction on your computer, smartphone or tablet go to www.superiorlivestock.com, but if you want to bid over the computer you must go to www.superiorclicktobid.com. Remember you can call in to bid on the internet, but you must be a member of www.superiorclicktobid.com to "click-to-bid". Your computer must have Flash Media Player installed for this website to view the auction. If you have any questions, please call the Superior Productions office at 800-431-4452.

***If you plan to bid by phone through Superior Livestock or 'Click-to-Bid', you must register at www.superiorlivestock.com prior to bidding.**

USING EPDS FOR SELECTION

Cattle Evaluations use the term Expected Progeny Differences (EPD) to express genetic transmitting ability of a sire for the various traits listed. An EPD is a prediction of how future progeny of a sire are expected to perform in a particular trait relative to other sires in the analysis. The key word is “difference”. The EPD itself does not imply “good” or “bad” performance. But rather, the EPD gives a prediction of the average difference to expect in the performance of a sire’s progeny relative to other sires in the same analysis.

Birth Weight EPD (BW) The expected difference in average birth weight (pounds) of progeny. Birth weight reflects prenatal growth.

Calving Ease Direct (CE) is expressed as a difference in percentage of unassisted births in first calf heifers. A higher value indicates greater calving ease. It predicts the average difference in unassisted births with which a sire's calves will be born when bred to first-calf heifers.

Calving Ease Maternal (MCE) is expressed as a difference in percentage of unassisted births in first calf daughters. A higher value indicates greater calving ease. It predicts the average difference in unassisted births with which a sire's daughters will calve as first-calf heifers when compared to daughters of other sires.

Weaning Weight EPD (WWT) The expected difference in average weaning weight of calves. The evaluation reflects the genetic influence on pre-weaning growth rate.

Yearling Weight EPD (YWT) The expected difference in average yearling weight of progeny. The evaluation reflects genetic influence on both pre-weaning and post-weaning growth rate.

Maternal Milk EPD (MAT) The genetic ability of a sire’s or dam’s daughters to express in pounds of weaning weight in her calves due to her maternal ability through mothering instinct and milk.

Total Maternal EPD (TOTMAT) A value to predict the weaning weight performance of calves from a animal’s daughters due to genetics for growth and maternal ability. Total Maternal is calculated by adding ½ the WWT EPD to the Maternal Milk EPD.

Scrotal Circumference EPD (SC) The expected difference in scrotal circumference (expressed in centimeters) of a bull’s or dam’s male offspring at yearling compared to progeny of all other animals evaluated. Research has also indicated a relationship between increased SC EPD and decreased age at puberty for daughters.

Charolais Breed Average for 2016-17 EPD’s

CE	BW	WW	YW	Milk	MCE	MTL	SC	CW	REA	Fat	Marb
3.1	0.3	27.2	50.1	9.0	3.1	22.6	0.80	17.5	0.36	0.007	0.07

Carcass records are adjusted to an age constant endpoint. Therefore selection based on any or all of the carcass merit EPD are comparable among cattle at the same age endpoint. For example selection based on increased EPD for carcass weight will result in heavier carcass weights than those animals with lower EPD for carcass weights when the cattle are harvested at the same age.

Carcass Weight EPD (HCW) Expected progeny differences for Carcass Weight is a predictor of pounds of retail product at a constant age endpoint. Selection for increased values should result in heavier carcasses, while selection for decreased values should result in lighter carcass weights at the same age endpoint. Carcass Weight EPD are expressed in pounds and is a predictor of the differences in hot carcass weight between parents progeny at an age constant endpoint.

Ribeye Area EPD (REA) Ribeye area is measured from a cross-sectional area of the longissimus dorsi muscle at the 12th rib. Ribeye area is a major component of the USDA yield grade equation and selection for increased ribeye area should result in larger ribeyes and lower yield grades between animals with the same carcass weight. Ribeye area has a positive relationship with weight, the larger the animal the larger the ribeye area. Ribeye Area EPD are expressed in square inches and is a predictor of differences in ribeye area between parents progeny at a constant age endpoint.

Fat Thickness EPD (FAT) Fat thickness is measured at the 12th rib and is the primary component to the USDA Yield Grade equation. Fat thickness has a negative relationship to cutability; therefore, selection base on decreased fat thickness should result in lower yield grades and leaner cattle given the same age endpoint. Fat Thickness EPD are expressed in inches and are a predictor of differences in fat thickness between parent's progeny at an age constant endpoint.

Marbling Score (MARB) Marbling is a subjective measure of the amount of intramuscular fat in the ribeye muscle. Marbling score is the primary component of USDA Quality grade and selection for increased Marbling Score EPD should result in cattle with higher quality grades at the same age endpoints. Marbling score has a small genetic correlation with fat, therefore producers may select for increased marbling score EPD while not changing external fat thickness when cattle are harvested at the same age-constant endpoint. Marbling EPD is a prediction of the differences in the USDA subjective marbling score between parent's progeny at an age constant endpoint.

Terminal Sire Index (TSI) The AICA Terminal Sire Index (TSI) is a formal method of combining Expected Progeny Differences (EPD) – BWT, WWT, YWT, REA, HCW, MARB and FAT – into one single value on which to base selection decisions. The TSI uses estimates of the genetic relationships between traits with an economic default value based on three year rolling USDA data.

The TSI represents a dollar index per terminal progeny produced for a bull in the AICA database, ranking them for profit potential. This dollar index is to be interpreted much like single trait EPD. For example, if Sire A's index is \$191.66 and Sire B's index is \$200.00, then we would expect Sire B's offspring to average \$8.34 more net return (\$200.00 minus \$191.66) than Sire A's offspring.

Yearling Performance DATA & TSI values

LOT #	TSI%	REA	FAT	MARB
1	211.43	13.53	0.31	3.29
2	195.74	12.65	0.23	2.16
3	208.22	12.76	0.27	4.81
4	180.55	13.09	0.16	0.97
5	184.96	12.04	0.26	--
6	189.00	12.32	0.13	3.45
7	174.77	10.85	0.17	3.74
17	193.96	13.36	0.16	2.47
18	183.20	11.52	0.17	2.68
19	174.70	11.07	0.16	2.03
26	187.31	13.03	0.20	2.67
27	173.41	12.32	0.21	3.53

2 Year old TSI values

LOT #	TSI %
8	163.34
9	184.78
10	190.89
11	190.06
12	188.35
13	199.02
14	167.66
15	188.47
16	173.77
20	190.51
21	169.91
22	188.52
23	194.15
24	192.49
25	181.35
28	164.01
29	160.98
30	167.84
31	--
32	164.89
33	172.49
34	178.98
35	163.54
36	176.06
37	--
38	177.10
39	171.69
40	160.86
41	161.62
42	202.21

NOTES

LUNDGREN CHAROLAIS

*CHEWACK RIVER RANCH
588 EAST CHEWUCH RD
WINTHROP, WA 98862*

*PLEASE BRING
THIS CATELOG
TO THE SALE*

SATURDAY MARCH 18TH, 2017

1:00 PM at Stockland Livestock Auction Davenport, WA

Lunch Served at 11:00 AM