

2020 Halfmann - Beckton *Profit Through Experience Sale*

Wednesday, October 7, 2020 • 1 pm
at the ranch in Miles, TX

140 Age-Advantage Red Angus Bulls
180 Bred Commercial Red Angus Females



**1 Beckton
Red Angus**
Foundation Herd of the Red Angus Breed

HALFMANN
RED ANGUS

Raised with Tradition • Bred for Profit • Developed to Last

Welcome to the Halfmann-Beckton Red Angus Sale!

Dear Friends,

Please join us on Wednesday, October 7th at the Halfmann ranch near Miles, Texas for the 2020 edition of our "Profit Through Experience Sale". The Halfmann and Beckton Red Angus programs have over 130 years combined experience in supplying genetics to the beef industry. Our respective longevity is largely due to our shared focus on producing Red Angus seedstock that combine the necessary traits to sustain rancher profitability.

There's no silver bullet for cow/calf profitability, but rather the accumulation of successful observations across the entire enterprise. These successes are measured in more live calves, higher pregnancy rates, cows staying productive in the herd for more calf crops - and ultimately weaning more total pounds per acre. Throughout this 2020 sale catalog, you'll find Red Angus bulls that balance calving ease, pay-weight, reproductive traits, lower cow feed inputs, and calf value traits, and those Age-Advantaged bulls are mature, masculine, athletic and ready to service lots of females in large country.

Superior Livestock Auction data compiled by Kansas State University (KSU) between 2010 and 2018 shows that Red Angus sired heifers have outsold Black Angus sired heifers by \$7/cwt. 2020 has seen the dominance of the Red Angus female, and Red Angus sired heifers remain the replacement of choice among commercial beef operations. The calf market has been exceptionally resilient this summer and once again we're seeing Red Angus sired heifer calves often outselling their steer mates.

In addition to 140 Age Advantage bulls, Beckton and Halfmann Red Angus have come together to offer 180 head of commercial Red Angus females, which will sell from their respective ranch. These females result from the same sire lines that produced our 2020 bull offering, so they are loaded with genetics for easy calving, easy keeping, fertility, longevity, and low maintenance costs.

As you study the catalog if you have any questions, or need someone to assist you in bull selection, please feel free to give either of our operations a call. We look forward to seeing you on October 7th!

Halfmann Red Angus & Beckton Red Angus



CHAD, GLEN & CODY HALFMANN



TRISH & CAM FORBES



Cam Forbes Office: 307-674-6095
Evenings: 307-674-8162

37 Beckton Drive Sheridan, WY 82801
becktonwyo@gmail.com
BecktonRedAngus.com



Office 325.468.2390
Glen 325.895.0544 • Cody 325.245.8928 • Chad 325.374.6116
2501 CR 357 Miles, TX 76861
info@halfmannredangus.com
HalfmannRedAngus.com

Auctioneer

Roger Jacobs Billings, MT
Cell: 406-698-7686

Livestock Representatives

Barrett Simon - Red Angus Association
Commercial Marketing Specialist
Cell: 316-452-1792
Phil Stoll - Weekly Livestock Reporter
Cell: 817-366-7332
Scott Farmer - Special Assignment
Cell: 817-597-1731
Justin Stelzer - Special Assignment
Cell: 817-992-7059

Sale Location - Halfmann Ranch

From San Angelo, Texas, head east on US 67 to Miles, proceed through Miles for 2.4 miles. Left onto County Road 357 to ranch.
From Ballinger, Texas, head west on US 67 to Rowena, proceed through Rowena for approximately 6 miles. Turn right onto county road 357 to ranch. Geographical location: 31.610411,-100.144257.

Airline Info

San Angelo Airport Regional Airport
American Airlines flies into San Angelo, Texas (30 miles from Halfmann Ranch).
Midland International Airport
Continental and Southwest Airlines fly into Midland, Texas (125 miles from Halfmann Ranch).

Hotel Accommodations

Courtyard by Marriott, San Angelo
2572 Southwest Blvd - 325-703-6400
Holiday Inn Express, San Angelo
4613 W Houston Harte Expressway - 325-223-2200
Comfort Suites, San Angelo
4450 W Houston Harte Expressway - 325-944-8600
Candlewood Suites, San Angelo
4587 W Houston Harte Expressway - 325-947-9400
Executive Inn, Ballinger
1005 Hutchins Ave - 325-365-5717

Online Supplemental Information:

Color photos, supplement information, videos and catalog available on our website: HalfmannRedAngus.com

Cattle Viewing

Videos are available online at www.HalfmannRedAngus.com. All bulls and Halfmann's commercial heifers will be on display at 12 noon the day prior to the sale at Halfmann Ranch Headquarters, Miles, Texas. The Beckton commercial females will be available for viewing and delivered from their ranch in Sheridan, Wyoming.

- Bulls will be delivered free of charge to central points for the first 400 miles from Miles, TX. All miles beyond 400 will be at cost.
- Registered females will be delivered at cost.
- Buyers whose bull and registered female purchases total \$18,000 or greater will receive free delivery in the continental US.
- Buyers who haul their own animals on sale day can deduct \$100 per bull from their purchases.
- Halfmann commercial females sell FOB according to their lot description. Beckton will pay the first 400 miles freight from Sheridan, WY for Beckton commercial females.

We will deliver cattle 1 to 3 weeks after the sale, although we will try to accommodate you if you need your bulls right away. We will make every effort to deliver your purchases to a central point as close as possible to your ranch.

All deliveries are at buyer's risk. We recommend insuring your purchases.

Insurance

Insurance will be available to purchase on sale day at checkout

Feeding

Please arrange to pick up or receive your purchases. Halfmann Ranch will begin shipping on the Monday following the sale. We will hold cattle if needed for 10 days following the sale. Afterwards, purchased cattle will be assessed for feed at \$5/head/day.

Absentee Bids

If you are unable to attend the sale, we can help you select the bulls or females to fit your needs. We guarantee Sight Unseen Purchase Satisfaction. Contact us or one of the livestock representatives before the sale. Your bid will be handled confidentially.

Herd Health

We have a comprehensive herd-wide health program which includes vaccinations for 7-Way, IBR, BVD, PI3, BRSV, Lepto, and ivermectin. The heifers are also vaccinated for bangs and vibrio. All Halfmann animals have been tested negative for BVD PI. All the bulls will have a general health and fertility examination by sale day. Breeding information will be available on sale day. Interstate health papers will be furnished for each animal in accordance with Federal Regulations.

International Buyers: it will be the responsibility of the buyer to cover the costs of any testing required for export outside of the United States.

Sale Day Lunch

A barbecue lunch will be served on sale day starting at 11 am. The lunch will be sponsored by **Gorman Milling Company/Red Chain Feeds**.

Auction Format:

Selling in catalog order by recorded video. May bid in person at Halfmann Ranch in Miles, TX, by phone with a livestock representative, or through Superior Productions (see next page for phone and computer instructions).

Table of Contents

- 3 INFORMATION**
- 4 ABSENTEE BIDDING**
- 7 BULLS**
- 21 RANCHER'S GUIDE TO EPDS**
- 40 COMMERCIAL FEMALES**
- 42 REFERENCE SIREs**
- 43 TERMS & CONDITIONS**

Viewing

All bulls are at Halfmann Ranch, Miles, TX
 Halfmann females are in Miles, TX
 Beckton females are in Sheridan, WY



How To Participate As An Absentee Buyer

We have made preparations to bid and buy livestock through Superior Productions' "Call or Click-To-Bid" service for those unable to attend in person on sale day. **Please note that all of the lots in the sale will also be available for viewing online prior to sale day at superiorlivestock.com.**

Here's How It Works

Turn in Bids Over the Phone

This is our traditional method of buying livestock and is the suggested process for anyone who does not have consistent, high-speed internet. To get started simply go online to superiorlivestock.com and click on the tab titled "Register for a Buyer Number". Select the registration form for Superior Productions and print the registration form. Fill it out and fax it in to Superior Productions at 817-378-3380 with a signature on it, or scan and email the form to info@superiorauction.com. You can also mail it in to the address provided on the form. Upon receipt of this information Superior will call you with a buyer's number and the bid line phone number that you will use on sale day to place bids over the phone.

Click-To-Bid

This is Superior's online bidding program for cattle buying. **Please note that high-speed internet is required – this is not for dial-up or satellite internet.** Registration is free, but you must become a member of superiorclicktobid.com to sign up. Becoming a member is easy – just go to the homepage of superiorclicktobid.com and follow the outlined steps to get started. Input your information and select a username and password. You will receive an e-mail confirming you are a member. From that point forward you just have to sign in and select the sale you would like to register for and once approved by the ranch you will receive an email confirming which sale you are now registered for.

Viewing the Auction

There are 2 places to view the sale broadcast live on the internet: www.superiorlivestock.com or www.superiorclicktobid.com. Just go to the home page of either website and select the auction. If you just want to watch the auction on your computer, smartphone, or tablet, go to www.superiorlivestock.com. If you want to bid over the computer, you must go to www.superiorclicktobid.com. Remember, you can call in to bid on the internet, but you must be a member of www.superiorclicktobid.com to "click-to-bid". Your computer must have Flash Media Player installed for this website to view the auction. If you have any questions, please call the Superior Productions office at 800-431-4452.

If you plan to bid by phone through Superior Livestock or 'Click-to-Bid', you must register at www.superiorlivestock.com prior to bidding.

MEET OUR TEAM



GLEN & DIANE HALFMANN



CODY, LAURA, EMILY, WILLIAM & MATTHEW HALFMANN



CHAD & MORGAN HALFMANN



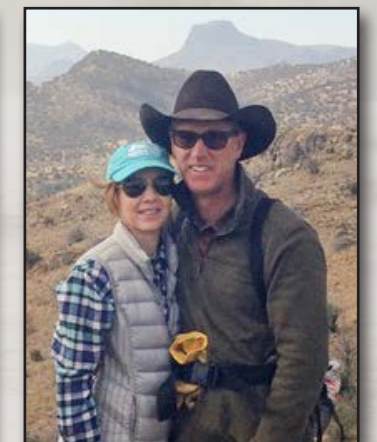
CHANO HERNANDEZ



ALFONSO CARLOS



BELLA,
HERD MANAGER



DIANE & DR. CHRIS
WOMACK, DVM



JONNA & KIRK
BOATRIGHT, CLERKING
& LOAD OUT



DOUG TAYLOR,
LOADOUT



ROGER JACOBS,
AUCTIONEER

RED CHAIN FEEDS

THE BRAND TO TRUST.



Since 1969, Gorman Milling Company has proudly supplied Texas cattle raisers with quality mixed feeds, pellets, cubes, and commodities under the Red Chain Feeds brand name. Whether you own a couple of cows or a couple thousand, we remain dedicated to providing you with the products and expertise needed to help your operation flourish.

REDCHAINFEEDS.COM

GORMAN MILLING COMPANY, INC
Gorman, Texas | (800) 588-2252

RED ANGUS BULLS

LOTS 1-2

1 HALFMAN KEYNOTE MA G516

02-12-2019 | CTH: G516 | A (100%) | #4127660

BROWN REVELATION P7021 BFCK CHEROKEE CNYN 4912
BROWN MS VICILA M7799

BROWN ORACLE B112

BROWN MS P707 Y6648 BECKTON NEBULA P P707
BROWN MS JULIAN W6579

BECKTON NEBULA EN S347 BECKTON NEBULA E P084
BECKTON EOLA P530 NB

BECKTON MARTA U079 NB

BECKTON MARTA S772 LO BECKTON LOKI C M740
BECKTON MARTA C314 JL

Individual Data	
act. BW	85
SC	40.0
Frame	M+

HerdBuilder 204 / Top 4% | GridMaster 52 / Top 5%

CED	BW	WW	ADG	DMI	YW	MLK	ME	HPG	CEM	STY	MRB	REA
16	-3.2	71	0.26	1.28	113	29	2	9	7	18	0.55	0.31
10%	23%	11%	17%	39%	12%	13%	58%	77%	44%	17%	18%	7%
Age of Dam: 11		Dam Weight: 1065		dMPPA: 106								



Lot 1

Keynote checks all the boxes! He got better each time he went through the chute earning ratios of: 107 WW, 109 YW, 111 ADG, 112 IMF and 113 REA. This Top 5% profitability sire also predicts to improve Feed Efficiency with his unique combination of high ADG and low DMI. Plus, Keynote looks like your next herd bull - square hipped, big scrotal, wide based and deep ribbed. We like herd sires out of dams that have stood the test of time, and his dam passes that test with flying colors - maintaining a 106 MPPA as an 11-yr-old.

2 HALFMAN FRONTIER SE G475

02-09-2019 | CFH: G475 | A (100%) | #4127484

BROWN REVELATION P7021 BFCK CHEROKEE CNYN 4912
BROWN MS VICILA M7799

BROWN ORACLE B112

BROWN MS P707 Y6648 BECKTON NEBULA P P707
BROWN MS JULIAN W6579

BECKTON NEBULA J R475 BECKTON NEBULA M045
BECKTON LARKEISA M138 JC

BECKTON SERENA Z564 N

BECKTON SERENA W265 E BECKTON EMPEROR T641 E2
BECKTON SERENA T057 EM

Individual Data	
act. BW	75
SC	41.0
Frame	M+

HerdBuilder 200 / Top 6% | GridMaster 55 / Top 1%

CED	BW	WW	ADG	DMI	YW	MLK	ME	HPG	CEM	STY	MRB	REA
15	-2.7	75	0.36	1.64	134	21	7	7	7	17	0.61	0.35
19%	31%	5%	1%	75%	1%	83%	93%	96%	44%	32%	11%	5%
Age of Dam: 7		Dam Weight: 1445		dMPPA: 106								



Lot 2

Frontier explores new levels of calf value with his 55 GridMaster which is well beyond the Top1%. This results from his tremendous gain and pay weight coupled with Marbling and REA EPDs that predict lots of carcass premiums. Not bad considering his life started as a largely "unnoticed" 75 lb. birthweight bull calf. Frontier is so dominant in the post-weaning traits, we almost forget he's a best 6% herdbuilder, who predicts to improve cow herd longevity and fertility and is out of a highly repeatable and productive dam.

Sale Catalog Data:

RAAA Category & % Red Angus

Red Angus Assoc Registration #

Actual Birth Weight

Scrotal Circumference

Relative Frame Size
L = Large
M = Med
S = Small

GridMaster Index & Percentile Rank
Profitability derived per cow exposed when bulls are mated to mature cows, no replacements are retained and all progeny are fed and sold on a value based grid.

Carcass EPDs & Percentile Rank
MARB = USDA Marbling Score
REA = Ribeye Area (in²)

dam's age & weight
actual age & weight taken of the dam of that animal at weaning

dam's MPPA
most probable producing ability

1	Bull Name		RAAA Category & % Red Angus		Red Angus Assoc Registration #							
02-21-2019	GKH: G564	1A (100%)	#3522544									
BROWN SYNERGY X7838	BECKTON NEBULA P P707	C-BAR & BROWN ABIGRACE T714										
HALFMAN SYNERGY EO B059												
BECKTON EOLA U101 NB	BECKTON NEBULA EN S347	BECKTON EOLA S011 NB										
BECKTON NEW ERA Y194	BECKTON NEBULA P P707	BKT LARKEISA T310 JC										
HALFMAN ANKATA NE B005												
HALFMAN ANKATA PK Z718	MESSMER PACKER S008	HALFMAN ANKATA U393										
Individual Data												
act. BW	73											
SC	40											
Frame	M											
HerdBuilder 201 / Top 2% GridMaster 50 / Top 6%												
CED	BW	WW	ADG	DMI	YW	MLK	ME	HPG	CEM	STY	MRB	REA
11	-4	66	0.24	1.50	104	26	-9	17	6	15	0.64	-0.16
11%	13%	24%	24%	24%	22%	16%	44%	2%	22%	4%	17%	36%
Age of Dam: 2		Dam Weight: 984		dMPPA: 106.86								
Average Daily Gain EPD												
Post-weaning growth expressed in pounds per day. A bull with a .20 ADG EPD would be expected to sire progeny that gained .10 lb/day more than a bull with a .10 ADG EPD provided were fed the same ration in the same environment, etc.												

CEM = Calving Ease Maternal
STY = Stayability
ME = Maintenance Energy Requirement
HPG = Heifer Pregnancy Rate
CEM = Calving Ease Maternal
STY = Stayability



Lot 3

3 HALFMAN HEAD START FL G456

02-07-2019 | GKH : G456 | A (100%) | #4208372

BROWN REVELATION P7021 BFCK CHEROKEE CNYN 4912
BROWN MS VICILA M7799

BROWN ORACLE B112
BROWN MS P707 Y6648 BECKTON NEBULA P P707
BROWN MS JULIAN W6579

BECKTON NEW ERA Y194 BECKTON NEBULA P P707
BKT LARKEISA T310 JC

HALFMANN FLOWER NE B062
HALFMANN DESTINY T351 5L DESTINATION 893-6215
BROWN MS VACATION P6837

Individual Data	
act. BW	73
SC	37.0
Frame	M-

HerdBuilder 216 / Top 1% | GridMaster 51 / Top 5%

CED	BW	WW	ADG	DMI	YW	MLK	ME	HPG	CEM	STY	MRB	REA
16	-5.0	66	0.29	1.66	113	21	8	10	7	20	0.56	0.43
9%	5%	25%	6%	76%	13%	80%	95%	72%	40%	5%	16%	3%

Age of Dam: 5 | Dam Weight: ET | dMPPA: 91

Head Start will make your banker happy. He packages an EPD profile that predicts to simultaneously improve calving ease, growth, cow herd longevity, fertility quality grade, carcass weight and yield grade! That translates into more live calves, more pounds weaned, lower cow herd depreciation costs, and heavier carcasses earning bigger quality and yield grade premiums.



Lot 4

4 HALFMANN ASSET SF G476

02-09-2019 | GKH : G476 | A (100%) | #4208382

BROWN REVELATION P7021 BFCK CHEROKEE CNYN 4912
BROWN MS VICILA M7799

BROWN ORACLE B112
BROWN MS P707 Y6648 BECKTON NEBULA P P707
BROWN MS JULIAN W6579

BROWN SYNERGY X7838 BECKTON NEBULA P P707
C-BAR & BROWN ABIGRACE T7

HALFMANN SUFFEINA SY B111
BKT SUFFEINA T500 EP BECKTON EPIC K3 M606
BECKTON SUFFEINA N844 LN

Individual Data	
act. BW	ET
SC	39.0
Frame	M

HerdBuilder 207 / Top 3% | GridMaster 52 / Top 3%

CED	BW	WW	ADG	DMI	YW	MLK	ME	HPG	CEM	STY	MRB	REA
17	-3.6	67	0.29	1.45	113	25	2	6	9	19	0.64	0.12
7%	17%	22%	6%	57%	12%	41%	61%	98%	8%	13%	8%	31%

Age of Dam: 5 | Dam Weight: ET | dMPPA: 107

ASSET is as "Well-Rounded" as they come with a 17 CED to 113 YW spread and top 3% rank for both Red Angus Profit indices. We love our Synergy daughters and this bull's dam was one of our best - earning a 107 MPPA as a 5 year old. Like his outstanding half-brothers who sell as Lots 2 & 3, ASSET was used as a natural service sire on our registered Red Angus heifers. We had such a hard time picking between these bulls, that we just used all three.

Lots 1-4 are sired by Oracle - the only active sire in the Red Angus breed that combines a 205 or better HerdBuilder with a 56 or Better GridMaster!

5 Beckton Cardinal G554 D2

04-03-2019 | BKT : G554 | A (100%) | #4170908

TR DOUBLE EAGLE ZT220 TR RICARDO DOS
BECKTON LANA U182 JC

BECKTON CARDINAL E673 L
BECKTON LARKABA A911 L BECKTON LEGEND U331 E2
BECKTON LARKABA T418 WA

BECKTON DOMINOR A378 W7 BECKTON DOMINOR Y005 V6
BECKTON LANA Y541 W

BECKTON COCA E332 D
BECKTON COCA X701 N BECKTON NEBULA T398 V3
BECKTON COCA T499 SC

Individual Data	
act. BW	70
SC	36.0
Frame	M

HerdBuilder 217 / Top 1% | GridMaster 51 / Top 8%

CED	BW	WW	ADG	DMI	YW	MLK	ME	HPG	CEM	STY	MRB	REA
19	-3.0	61	0.24	0.80	99	27	-2	13	11	18	0.50	0.14
1%	26%	46%	29%	12%	37%	29%	28%	13%	3%	22%	26%	27%

Age of Dam: 2 | Dam Weight: 825 | dMPPA: 104

Our 2020 sale offering features some truly elite calving ease bulls, and none more so than G554. This top 1% Calving Ease and HerdBuilder sire comes with extra muscle and depth of body. He was born unassisted out of a 2-yr-old dam, who has already earned a 104 MPPA in the breed's Foundation herd.



Lot 5

6 BSF Accent G607 L4

04-07-2019 | BSF : G607 | B (99.90%) | #4171254

BECKTON ACCENT W180 C2 BECKTON CODY K1 P014
BECKTON CHRISTY R046 CQ

BECKTON ACCENT B740 W3
BECKTON LANA Y033 W BECKTON WARRIOR W534 N4
BECKTON LANA W370 E

BECKTON LEGEND S670 BECKTON LANCER F442 T
BECKTON KIT F468 JL

BSF JULIANNE X510 L
BSF JULIANNE R707 JL BECKTON JULIAN G1 J526
BSF REGUS L568 LN

Individual Data	
act. BW	75
SC	43.0
Frame	M

HerdBuilder 202 / Top 5% | GridMaster 49 / Top 33%

CED	BW	WW	ADG	DMI	YW	MLK	ME	HPG	CEM	STY	MRB	REA
19	-5.1	58	0.2	1.03	90	26	-2	12	8	18	0.41	0.16
1%	5%	57%	61%	22%	60%	31%	32%	29%	22%	22%	44%	23%

Age of Dam: 9 | Dam Weight: 1085 | dMPPA: 104

If you need to breed heifers and you want to keep replacements, check out G607. In addition to best 1% Calving Ease, he predicts to improve heifer pregnancy rate, maternal calving ease all while reducing intake cow herd depreciation costs and mature cow maintenance energy needs.



Halfmann Flower NE B062, Dam of Lot 3

7 Beckton Accent G189 A4

03-14-2019 | BKT : G189 | A (100%) | #4170962

BECKTON ACCENT W180 C2 BECKTON CODY K1 P014
BECKTON CHRISTY R046 CQ

BECKTON ACCENT E172 L3
BECKTON INDIGO Y406 L BECKTON LIKABLE U130 L2
BECKTON INDIGO R745 WR

BECKTON ACCENT W180 C2 BECKTON CODY K1 P014
BECKTON CHRISTY R046 CQ

BECKTON CHRISTY E335 A
BECKTON CHRISTY Z587 C BECKTON CLIFFTOP W692 E3
BECKTON CHRISTY S475 EP

Individual Data	
act. BW	54
SC	37.0
Frame	M-

HerdBuilder 191 / Top 12% | GridMaster 47 / Top 63%

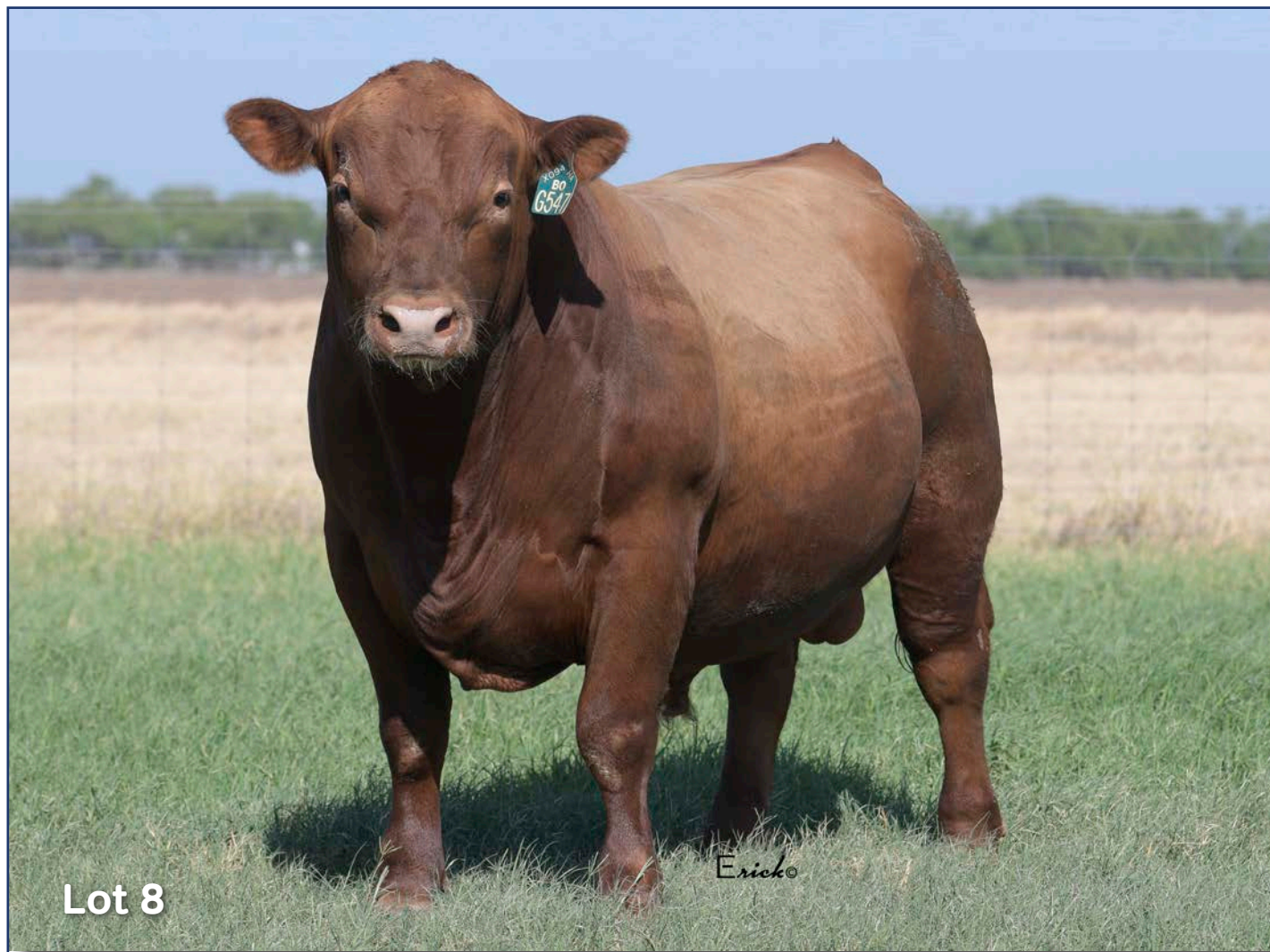
CED	BW	WW	ADG	DMI	YW	MLK	ME	HPG	CEM	STY	MRB	REA
14	-4.0	56	0.21	1.19	90	25	-2	10	4	20	0.23	0.09
33%	13%	64%	55%	32%	61%	45%	29%	71%	93%	6%	88%	38%

Age of Dam: 2 | Dam Weight: 820 | dMPPA: 98

Here's a well balanced, line-bred Accent W180 son that ranks in the top 1/3 of the breed for 7 traits.



Halfmann Suffeina SY B111, Dam of Lot 4



Lot 8

8 HALFMAN ARIAT LK G547

02-15-2019 | GKH : G547 | A (100%) | #4127386

5L ADVANTAGE 3267-221Y | BUF CRK THE RIGHT KIND U199
5L ADINA 195-3267

5L BOURNE 117-48A

5L ROXIE 854-117 | 5L SIGNATURE 5615
XXX ROXIE 854 MR

BECKTON HASTEN U108 J3 | BECKTON HASTEN H S462
BECKTON ENCINO S456 JC

BECKTON LARKEISA X094 H

BKT LARKEISA U583 NB | BECKTON NEBULA L P093
BKT LARKEISA E578 HB

Individual Data	
act. BW	92
SC	40.0
Frame	M+

HerdBuilder 186 / Top 18% | GridMaster 49 / Top 24%

CED	BW	WW	ADG	DMI	YW	MLK	ME	HPG	CEM	STY	MRB	REA
12	-1.5	75	0.24	1.51	113	25	-4	16	4	17	0.48	-0.06
63%	54%	6%	31%	63%	12%	43%	19%	3%	94%	30%	29%	72%

Age of Dam: 9 | Dam Weight: 980 | dMPPA: 108

G547 leads off a powerful sire group by Bourne, who we added because of his feed efficiency, excellent replacement females and powerful phenotype. With ratios of: 117 WW, 112 YW, 116 IMF and 105 REA, G547 is as deep and thick as they come. Better yet, his moderate sized, experienced dam has maintained a 108 MPPA while taking up way less grass than her herd-mates.

9 HALFMAN BOURNE MA G426

01-24-2019 | GKH : G426 | A (100%) | #4127290

5L ADVANTAGE 3267-221Y | BUF CRK THE RIGHT KIND U199
5L ADINA 195-3267

5L BOURNE 117-48A

5L ROXIE 854-117 | 5L SIGNATURE 5615
XXX ROXIE 854 MR

HALFMANN TAKEOVER DY C276 | LSF TAKEOVER 9943W
HALFMANN FLOWER NB Y596

HALFMANN MATTIE TO E846

HALFMANN MATTIE EP C242 | BECKTON EPIC R397 K
HALFMANN MATTIE CH Y660

Individual Data	
act. BW	67
SC	41.0
Frame	M+

HerdBuilder 175 / Top 33% | GridMaster 49 / Top 23%

CED	BW	WW	ADG	DMI	YW	MLK	ME	HPG	CEM	STY	MRB	REA
14	-3.9	70	0.24	1.59	109	26	-1	16	6	15	0.58	0.02
28%	14%	13%	31%	70%	19%	38%	35%	3%	76%	60%	14%	53%

Age of Dam: 2 | Dam Weight: 944 | dMPPA: 103

Another big scrotal Bourne son whose EPD profile predicts more calves weaned, more pregnant heifers, heavier pay weights, bigger carcass premiums and heavier producing replacements.

10 HALFMAN BOURNE MI G519

02-12-2019 | CTH : G519 | A (100%) | #4127664

5L ADVANTAGE 3267-221Y | BUF CRK THE RIGHT KIND U199
5L ADINA 195-3267

5L BOURNE 117-48A

5L ROXIE 854-117 | 5L SIGNATURE 5615
XXX ROXIE 854 MR

BECKTON NEBULA P P707 | BECKTON NEBULA M045
BECKTON LANA M809 EP

HALFMANN MAIATA NB B047

BECKTON MAIATA U489 HT | BECKTON HERITAGE N013
BKT MAIATA K503 EP

Individual Data	
act. BW	73
SC	36.0
Frame	M+

HerdBuilder 173 / Top 35% | GridMaster 48 / Top 45%

CED	BW	WW	ADG	DMI	YW	MLK	ME	HPG	CEM	STY	MRB	REA
15	-4.5	58	0.2	1.11	91	22	-3	14	6	15	0.55	-0.26
19%	8%	56%	60%	26%	59%	70%	23%	8%	67%	54%	18%	97%

Age of Dam: 5 | Dam Weight: 1220 | dMPPA: 97

Another Bourne son - and again a calving ease specialist that excels for low dry matter intake (DMI) low maintenance energy requirement and superior quality grade.



Lot 10

11 HALFMAN NACHO CH G408

01-19-2019 | CFH : G408 | A (100%) | #4127438

5L ADVOCATE 817-14W | 5L SIGNATURE 5615
5L MARTA 345-817

5L DEFENDER 560-30Z

5L BLACK ADINA 525-560 | TC STOCKMAN 365
5L ADINA 293-525

BECKTON CLIFFTOP W692 E3 | BKT CLIFFTOP TP R288
BECKTON LYDIA S274 EP

HALFMANN CHIEF CT E715

HALFMANN CHIEF NB C253 | BECKTON NEBULA P P707
HALFMANN CHIEF MS Y616

Individual Data	
act. BW	71
SC	38.0
Frame	M+

HerdBuilder 127 / Top 92% | GridMaster 50 / Top 16%

CED	BW	WW	ADG	DMI	YW	MLK	ME	HPG	CEM	STY	MRB	REA
15	-4.3	68	0.27	2.09	110	28	-4	6	5	10	0.63	0.18
14%	10%	19%	15%	97%	16%	15%	20%	97%	86%	94%	9%	21%

Age of Dam: 2 | Dam Weight: 876 | dMPPA: 111

This Defender son comes with a 15 CED to 110 YW Spread and will sire calves that really press down the scales. He had incredible performance ratios of: 127 WW, 119 YW and 123 REA.



Lot 11

12 HALFMAN CONCHO FR G427

01-24-2019 | CFH : G427 | A (100%) | #4127450

5L ADVOCATE 817-14W | 5L SIGNATURE 5615
5L MARTA 345-817

5L DEFENDER 560-30Z

5L BLACK ADINA 525-560 | TC STOCKMAN 365
5L ADINA 293-525

BECKTON JULIAN Z382 JZ | BECKTON JULIAN X721 E6
BECKTON LARKABA X064 J

HALFMANN FREYJA JL E902

BECKTON FREYJA W462 N | BECKTON NEBULA T054 H3
BECKTON FREYJA T147 HI

Individual Data	
act. BW	75
SC	36.0
Frame	M+

HerdBuilder 135 / Top 88% | GridMaster 50 / Top 14%

CED	BW	WW	ADG	DMI	YW	MLK	ME	HPG	CEM	STY	MRB	REA
17	-4.0	65	0.25	1.75	105	25	-6	9	6	10	0.61	0.13
4%	13%	27%	25%	83%	25%	43%	11%	87%	73%	95%	11%	29%

Age of Dam: 2 | Dam Weight: 954 | dMPPA: 105

Another WideBody by Defender who packs a 112 WW ratio and 110 YW ratio into a best 4% Calving Ease and lightest 13% birthweight.



Lot 12



13 BSF Nebula G294 E4
 03-20-2019 | BSF : G294 | B (99.90%) | #4171624
 BECKTON NEBULA P P707 BECKTON NEBULA M045
 BECKTON LANA M809 EP
BECKTON NEBULA B557 J3
 BECKTON LARKABA T813 JC BECKTON JUSTICE CH M056
 BECKTON LARKABA P645 JL
 BECKTON EPIC Z674 E6 BECKTON EPIC U749 D5
 BECKTON INDIGO U504 EP
BSF JULIA D276 E
 BSF JULIA T623 JO BECKTON JULIO L233
 BSF REGUS M006 NP

Individual Data	
act. BW	67
SC	33.5
Frame	M-

HerdBuilder 180 / Top 25% | GridMaster 49 / Top 24%

CED	BW	WW	ADG	DMI	YW	MLK	ME	HPG	CEM	STY	MRB	REA
14	-3.3	51	0.25	1.10	91	27	2	10	6	17	0.52	-0.11
32%	21%	80%	24%	26%	57%	29%	57%	57%	63%	31%	22%	82%

Age of Dam: 3 | Dam Weight: 980 | dMPPA: 99

Improved Feed Efficiency results when above average gains are combined with below average dry matter intake (DMI). G294 ranks in the top 1/4 of the breed for rapid gain and low dry matter intake.

14 Beckton Accent G835 L5
 05-28-2019 | BKT : G835 | A (100%) | #4170582
 BECKTON ACCENT Y260 L3 BECKTON ACCENT W180 C2
 BECKTON LANA W463 L
BECKTON ACCENT B150 N4
 BKT LARKEISA S055 NB BECKTON NEBULA P P707
 BECKTON LARKEISA P688 C
 BECKTON LIKABLE Y124 L3 BECKTON LIKABLE U130 L2
 BKT PINE MARIE S802 LO
BECKTON COCA C840 L
 BECKTON COCA Z239 N BECKTON NEBULA X603 J4
 BECKTON COCA X701 N

Individual Data	
act. BW	70
SC	36.0
Frame	M-

HerdBuilder 218 / Top 1% | GridMaster 46 / Top 75%

CED	BW	WW	ADG	DMI	YW	MLK	ME	HPG	CEM	STY	MRB	REA
18	-4.8	52	0.15	0.65	76	24	-4	12	8	21	0.50	-0.32
2%	6%	77%	91%	7%	86%	56%	21%	26%	20%	2%	26%	99%

Age of Dam: 4 | Dam Weight: 1010 | dMPPA: 97

G835's Top 1% HerdBuilder is supported by top 2% Stayability and best 1/4 of the breed ranks for heifer pregnancy rate, maternal calving ease and low maintenance energy requirement. You'll want to keep every heifer by this bull.

15 BSF Likable G673 J6
 04-15-2019 | BSF : G673 | B (99.20%) | #4171242
 BECKTON LIKABLE Z057 L4 BECKTON LIKABLE X445 J3
 BECKTON MINOLA X107 L
BECKTON LIKABLE B032 C5
 BECKTON MONA Z270 C BECKTON CLIFFTOP W577 E3
 BECKTON MONA U584 CD
 BECKTON JET U473 L2 BECKTON JET L P491
 BECKTON LYDIA N047 LM
BSF CHERISE X058 J
 BSF CHERISE U771 CQ BECKTON CHEROKEE N N479
 BSF REGUS L683 CT

Individual Data	
act. BW	76
SC	33.0
Frame	M+

HerdBuilder 183 / Top 21% | GridMaster 51 / Top 5%

CED	BW	WW	ADG	DMI	YW	MLK	ME	HPG	CEM	STY	MRB	REA
15	-3.1	62	0.31	1.26	113	27	6	12	6	16	0.42	-0.02
14%	24%	39%	2%	38%	13%	26%	87%	22%	69%	51%	42%	63%

Age of Dam: 9 | Dam Weight: 1080 | dMPPA: 105

This Likeable son could have started the sale - spreading his 15 CED to a top 2% ADG and triple-digit growth. His 9-yr-old dam is rock solid maintaining a 105 MPPA in the breed's foundation herd.



16 HALFMANN TRIBUTE MI G495
 02-11-2019 | GKH : G495 | A (100%) | #4127346
 BROWN REVELATION P7021 BFCK CHEROKEE CNYN 4912
 BROWN MS VICILA M7799
BROWN ORACLE B112
 BROWN MS P707 Y6648 BECKTON NEBULA P P707
 BROWN MS JULIAN W6579
 LSF NIGHT CALVER 9921W MESSMER PACKER S008
 LSF DELLA P4078 U8051
HALFMANN MINERVA NC B053
 HALFMANN MINERVA CH Y645 HALFMANN CHATEAU L610
 HALFMANN MINERVA U307

Individual Data	
act. BW	86
SC	35.0
Frame	M+

HerdBuilder 200 / Top 6% | GridMaster 51 / Top 5%

CED	BW	WW	ADG	DMI	YW	MLK	ME	HPG	CEM	STY	MRB	REA
15	-3.0	70	0.27	1.42	113	22	1	10	9	17	0.54	0.42
16%	26%	14%	12%	54%	12%	71%	53%	75%	8%	27%	19%	3%

Age of Dam: 5 | Dam Weight: 1030 | dMPPA: 103

Lot 16-18 Half Brothers: Uniformity is one of the best ways to add value to a calf crop, and simplify management of the cow herd. These three brothers all offer tremendous spread from 15 CED to triple-digit yearling weights and all rank in single digits for GridMaster index, which indicates higher calf values and post-weaning success. All three are out of sub-1200 lb cows that are top producers earning 103-106 MPPAs. Buy all three of these age-advantage Oracle sons and turn them out with your best 100 females!

17 HALFMANN ORACLE BA G500
 02-11-2019 | CFH : G500 | A (100%) | #4127502
 BROWN REVELATION P7021 BFCK CHEROKEE CNYN 4912
 BROWN MS VICILA M7799
BROWN ORACLE B112
 BROWN MS P707 Y6648 BECKTON NEBULA P P707
 BROWN MS JULIAN W6579
 BECKTON CHEROKEE N N479 BFCK CHEROKEE CNYN 4912
 BECKTON DINAH C440 NM
BECKTON BARMAID U114 CQ
 BECKTON BARMAID P323 HR BECKTON HERALD FV J537
 BECKTON BARMAID J012 CO

Individual Data	
act. BW	76
SC	39.0
Frame	M

HerdBuilder 187 / Top 16% | GridMaster 51 / Top 9%

CED	BW	WW	ADG	DMI	YW	MLK	ME	HPG	CEM	STY	MRB	REA
15	-2.6	71	0.23	1.25	108	24	-1	10	6	17	0.59	0.26
21%	32%	11%	38%	37%	20%	52%	36%	74%	79%	31%	13%	11%

Age of Dam: 11 | Dam Weight: 1170 | dMPPA: 106

19 HALFMANN TENX MI G449
 02-06-2019 | GKH : G449 | A (100%) | #4127310
 REDHILL TEN X 104U 190A AAR TEN X 7008 SA
 RED HILL B571 BARMAID 104U
RHF-RHR 190A TENX 49D
 REDHILL 151Y AMBER 134B REDHILL U199 LANCER 151Y
 RHF-CCCH 4X AMBER 46Z
 BECKTON EPIC R397 K BECKTON EPIC K F075
 BECKTON KIT F468 JL
HALFMANN MINERVA EP C254
 BECKTON MINERVA W081 N BECKTON NEBULA G S237
 BECKTON MINERVA F495 CH

Individual Data	
act. BW	72
SC	36.0
Frame	M

HerdBuilder 161 / Top 57% | GridMaster 49 / Top 28%

CED	BW	WW	ADG	DMI	YW	MLK	ME	HPG	CEM	STY	MRB	REA
13	-3.6	53	0.21	0.81	87	25	0	12	7	14	0.55	-0.20
38%	17%	74%	54%	12%	67%	42%	46%	29%	43%	70%	18%	93%

Age of Dam: 4 | Dam Weight: 1165 | dMPPA: 96

You'll find several sons of the Red Hill TENX 49D bull in this sale, and G449 is one of the best. We used 49D as an outcross sire, his grandsire is the popular Angus sire, AA R Ten X 7008 SA who is proven to improve Feedlot and Carcass traits.



18 HALFMANN ORACLE RN G520
 02-12-2019 | CFH : G520 | A (100%) | #4127522
 BROWN REVELATION P7021 BFCK CHEROKEE CNYN 4912
 BROWN MS VICILA M7799
BROWN ORACLE B112
 BROWN MS P707 Y6648 BECKTON NEBULA P P707
 BROWN MS JULIAN W6579
 BROWN SYNERGY X7838 BECKTON NEBULA P P707
 C-BAR & BROWN ABIGRACE T7
HALFMANN ROBIN SY B056
 HALFMANN ROBIN WR Y595 BECKTON WARRIOR N645 T1
 HALFMANN ROBIN W420

Individual Data	
act. BW	79
SC	39.0
Frame	M+

HerdBuilder 183 / Top 20% | GridMaster 51 / Top 8%

CED	BW	WW	ADG	DMI	YW	MLK	ME	HPG	CEM	STY	MRB	REA
15	-3.3	62	0.25	1.46	103	24	6	7	9	16	0.70	0.19
16%	21%	40%	21%	57%	30%	56%	90%	95%	8%	40%	4%	19%

Age of Dam: 5 | Dam Weight: 1125 | dMPPA: 104



20 BSF Cardinal G741 C2

04-26-2019 | BSF: G741 | B (99.80%) | #4171602
 TR DOUBLE EAGLE ZT220 TR RICARDO DOS
 BECKTON LANA U182 JC
BECKTON CARDINAL E673 L
 BECKTON LARKABA A911 L BECKTON LEGEND U331 E2
 BECKTON LARKABA T418 WA
 BECKTON CARDINAL B074 N TR DOUBLE EAGLE ZT220
 BKT PINE MARIE Z250 N
BSF CHERISE D053 C
 BSF CHERISE B348 L BECKTON LIKABLE U130 L2
 BSF CHERISE X058 J

Individual Data	
act. BW	56
SC	35.0
Frame	M

HerdBuilder 211 / Top 2% | GridMaster 49 / Top 34%

CED	BW	WW	ADG	DMI	YW	MLK	ME	HPG	CEM	STY	MRB	REA
22	-7.5	54	0.21	0.87	86	26	0	12	12	17	0.40	0.13
1%	1%	74%	59%	14%	68%	38%	43%	24%	1%	26%	46%	29%

Age of Dam: 3 | Dam Weight: 870 | dMPPA: 99

This "Sleep-all-Night" heifer bull ranks in the top 2% for HerdBuilder profitability and non wonder - with his lowest 14% rank for Dry Matter Intake (DMI) your annual cow costs will be reduced. And you'll bring more live calves to market with his 1% ranks for both direct (CED) and maternal (CEM) calving ease.



23 Beckton Clifftop G438 E7

03-27-2019 | BKT: G438 | A (100%) | #4228532
 BECKTON CLIFFTOP C572 N5 BECKTON CLIFFTOP Y012 C4
 BKT PINE MARIE U454 NB
BECKTON CLIFFTOP E077 L6
 BECKTON LARKABA C217 L BECKTON LEGEND S670
 BECKTON LARKABA U062 CB
 BECKTON CLIFFTOP Y012 C4 BECKTON CLIFFTOP W692 E3
 BECKTON LANA W240 C
BECKTON LARKABA E835 E
 BECKTON LARKABA A751 L BECKTON LEGEND U331 E2
 BECKTON LARKABA W868 J

Individual Data	
act. BW	56
SC	32.5
Frame	S+

HerdBuilder 180 / Top 25% | GridMaster 48 / Top 34%

CED	BW	WW	ADG	DMI	YW	MLK	ME	HPG	CEM	STY	MRB	REA
18	-4.2	58	0.21	0.87	92	29	-6	9	8	16	0.41	-0.13
3%	11%	55%	53%	14%	55%	13%	12%	81%	25%	50%	44%	86%

Age of Dam: 2 | Dam Weight: 745 | dMPPA:

21 Beckton Cardinal G087 C3

03-05-2019 | BKT: G087 | A (100%) | #4170986
 BECKTON CARDINAL B074 N TR DOUBLE EAGLE ZT220
 BKT PINE MARIE Z250 N
BECKTON CARDINAL E381 J2
 BECKTON LARKABA W868 J BECKTON JULIAN G5 S107
 BECKTON LARKABA S663 JE
 BECKTON CARDINAL B074 N TR DOUBLE EAGLE ZT220
 BKT PINE MARIE Z250 N
BECKTON ROSE E404 C
 BECKTON ROSE Z048 N BECKTON NEBULA X353 E3
 BECKTON ROSE X662 C

Individual Data	
act. BW	50
SC	36.5
Frame	M-

HerdBuilder 188 / Top 15% | GridMaster 49 / Top 30%

CED	BW	WW	ADG	DMI	YW	MLK	ME	HPG	CEM	STY	MRB	REA
19	-6.0	49	0.25	0.89	88	27	0	12	10	16	0.29	0.00
1%	2%	86%	27%	15%	64%	25%	45%	25%	7%	48%	74%	58%

Age of Dam: 2 | Dam Weight: 825 | dMPPA: 99

22 Beckton Heritage G245 N5

03-17-2019 | BKT: G245 | A (100%) | #4170322
 BECKTON HERITAGE A767 C3 BECKTON HERITAGE X356 E2
 BECKTON ROSE W816 C
BECKTON HERITAGE D195 L4
 BECKTON SUSAN W846 L BECKTON LOKI CL S284
 BECKTON SUSAN S684 JJ
 BECKTON NEBULA T269 E2 BECKTON NEBULA M045
 BECKTON RUTH M967 EP
BECKTON LAKME Z405 N
 BECKTON LAKME T692 EP BECKTON EPIC KM M115
 BECKTON LAKME P513 EP

Individual Data	
act. BW	77
SC	36.5
Frame	M

HerdBuilder 163 / Top 54% | GridMaster 48 / Top 34%

CED	BW	WW	ADG	DMI	YW	MLK	ME	HPG	CEM	STY	MRB	REA
13	-2.6	64	0.27	1.35	108	29	3	9	7	15	0.32	-0.19
36%	32%	31%	12%	47%	20%	13%	68%	80%	49%	58%	66%	92%

Age of Dam: 7 | Dam Weight: 1280 | dMPPA: 106

Long Bodied, well-muscled Heritage son that continues to move in front of his contemporaries - earning performance ratios of: 106 weaning, 108 yearling and 110 ADG.

24 BSF Accent G752 W4

04-30-2019 | BSF: G752 | B (99.80%) | #4171584
 BECKTON ACCENT W180 C2 BECKTON CODY K1 P014
 BECKTON CHRISTY R046 CQ
BECKTON LIKABLE B549 N4
 BECKTON MINERVA Y654 N BECKTON NEBULA T398 V3
 BECKTON MINERVA M369 LO
 BECKTON WARRIOR Y108 E5 BECKTON WARRIOR W534 N4
 BECKTON SUSAN W058 E
BSF OLIVE D523 W
 BSF OLIVE A863 C BECKTON CLIFFTOP Y012 C4
 BSF OLIVE Y105 L

Individual Data	
act. BW	66
SC	35.0
Frame	M

HerdBuilder 186 / Top 17% | GridMaster 48 / Top 34%

CED	BW	WW	ADG	DMI	YW	MLK	ME	HPG	CEM	STY	MRB	REA
16	-3.9	63	0.25	1.33	103	28	1	11	8	17	0.32	-0.01
7%	14%	38%	22%	44%	29%	15%	54%	44%	35%	35%	66%	62%

Age of Dam: 3 | Dam Weight: 985 | dMPPA: 101

Another Likable son that has sufficient calving ease and low birth weight for your heifers, yet delivers triple-digit growth so he can profitably transition into serving the cow herd after he outgrows the heifers.

25 HALFMAN ACCENT SI G469

02-09-2019 | CFH: G469 | A (100%) | #4127474
 BECKTON ACCENT Y312 N3 BECKTON ACCENT U777 C2
 BKT LARKEISA S055 NB
BECKTON ACCENT C216 D4
 BECKTON BELGA R716 DM BECKTON DOMINOR ZC M919
 BECKTON BELGA K285 JL
 BIEBER H HUGHES W109 BASIN HOBO 0545
 BASIN ROSE 06T0
HALFMANN SIERRA HG E821
 HALFMANN SIERRA NB X467 BECKTON NEBULA P F707
 HALFMANN SIERRA U330

Individual Data	
act. BW	70
SC	35.0
Frame	M+

HerdBuilder 185 / Top 18% | GridMaster 48 / Top 51%

CED	BW	WW	ADG	DMI	YW	MLK	ME	HPG	CEM	STY	MRB	REA
15	-3.8	61	0.21	1.35	95	26	0	12	8	17	0.56	-0.19
16%	15%	45%	54%	46%	49%	39%	40%	33%	32%	28%	16%	92%

Age of Dam: 2 | Dam Weight: 1015 | dMPPA: 103

Plenty of shape and muscle packaged in a low birth weight, high calving ease son of Accent C216. G469 got better with each trip through the chute earning ratios of: 108 WW, 106 YW, 122 IMF and 106 REA.



26 HALFMAN ACCENT GR G484

02-10-2019 | CTH: G484 | A (100%) | #4127650
 BECKTON ACCENT U777 C2 BECKTON CODY K1 P014
 BECKTON SUSAN R022 CQ
BECKTON ACCENT Y312 N3
 BKT LARKEISA S055 NB BECKTON NEBULA P F707
 BECKTON LARKEISA P688 C
 HALFMANN NEBULA AL Y593 BECKTON NEBULA P F707
 HALFMANN ALEXIS U352
HALFMANN GRANDE NB B090
 HALFMANN GRANDE I550 HALFMANN JR 107 J350
 HALFMANN RAMBO 501 GRANDE

Individual Data	
act. BW	65
SC	36.0
Frame	M

HerdBuilder 159 / Top 61% | GridMaster 46 / Top 80%

CED	BW	WW	ADG	DMI	YW	MLK	ME	HPG	CEM	STY	MRB	REA
18	-6.4	50	0.2	1.31	81	26	-3	12	8	14	0.44	-0.16
3%	1%	84%	66%	42%	78%	35%	26%	26%	27%	73%	37%	89%

Age of Dam: 5 | Dam Weight: 1165 | dMPPA: 97

Lot 26-28 Half Brothers: Build a moderate framed, easy fleshing cow herd with these deep-ribbed, soft made sons of Accent Y312. Lot 26 offers the best 3% calving ease and lowest 1% birthweight. Lot 27 & 28 are actually 3/4 brothers.



27 HALFMAN ACCENT MA G534

02-13-2019 | GKH: G534 | A (100%) | #4127378
 BECKTON ACCENT U777 C2 BECKTON CODY K1 P014
 BECKTON SUSAN R022 CQ
BECKTON ACCENT Y312 N3
 BKT LARKEISA S055 NB BECKTON NEBULA P F707
 BECKTON LARKEISA P688 C
 BECKTON EPIC R397 K BECKTON EPIC K F075
 BECKTON KIT F468 JL
HALFMANN MATTIE EP C242
 HALFMANN MATTIE CH Y660 HALFMANN CHATEAU U335
 HALFMANN MATTIE U334

Individual Data	
act. BW	84
SC	39.0
Frame	M+

HerdBuilder 157 / Top 64% | GridMaster 48 / Top 47%

CED	BW	WW	ADG	DMI	YW	MLK	ME	HPG	CEM	STY	MRB	REA
13	-3.2	60	0.24	1.45	98	26	-5	14	6	14	0.59	-0.22
35%	23%	50%	33%	56%	42%	39%	15%	6%	63%	76%	13%	95%

Age of Dam: 4 | Dam Weight: 1060 | dMPPA: 101

28 HALFMAN ACCENT SI G488

02-10-2019 | CFH: G488 | A (100%) | #4127490
 BECKTON ACCENT U777 C2 BECKTON CODY K1 P014
 BECKTON SUSAN R022 CQ
BECKTON ACCENT Y312 N3
 BKT LARKEISA S055 NB BECKTON NEBULA P F707
 BECKTON LARKEISA P688 C
 BECKTON EPIC R397 K BECKTON EPIC K F075
 BECKTON KIT F468 JL
HALFMANN SIERRA EP C278
 HALFMANN SIERRA MS Z743 HALFMANN M-STATEMENTAL
 HALFMANN SIERRA NB X467

Individual Data	
act. BW	74
SC	38.0
Frame	M

HerdBuilder 151 / Top 73% | GridMaster 48 / Top 52%

CED	BW	WW	ADG	DMI	YW	MLK	ME	HPG	CEM	STY	MRB	REA
14	-3.2	62	0.23	1.44	99	27	0	13	7	13	0.42	0.01
33%	23%	39%	38%	55%	38%	28%	47%	11%	60%	79%	42%	55%

Age of Dam: 4 | Dam Weight: 1245 | dMPPA: 104



Lot 29

29 **HALFMANN TOPGUN AQ G506**
 02-11-2019 | GKH : G506 | A (100%) | #4127354
 5L ADVANTAGE 3267-221Y BUF CRK THE RIGHT KIND U199
 5L ADINA 195-3267
5L TOPGUN 560-65B
 5L BLACK ADINA 525-560 TC STOCKMAN 365
 5L ADINA 293-525
 OLC CHATEAU K465 GLACIER CHATEAU 744
 BIEBER ELINE H649
HALFMANN AQUILA U391
 2KBR M410 BUF CRK MARATHON 6156
 LCC AQUILA LA121

Individual Data	
act. BW	75
SC	39.0
Frame	M

HerdBuilder 147 / Top 77% GridMaster 48 / Top 48%												
CED	BW	WW	ADG	DMI	YW	MLK	ME	HPG	CEM	STY	MRB	REA
16	-4.2	56	0.21	1.34	89	19	3	11	9	12	0.43	0.16
12%	11%	66%	55%	46%	62%	90%	70%	37%	10%	86%	41%	23%
Age of Dam: 11 Dam Weight: 1190 dMPPA: 99												

We used TopGun due to his high accuracy calving ease, superior structure and single digit ranks for the important cow herd building traits of: heifer pregnancy rate, maternal calving ease and low maintenance energy requirements. G506 was raised by a high longevity dam who can match fertility and production with cows have her age.



Lot 30

30 **HALFMANN TOPGUN DU G503**
 02-11-2019 | GKH : G503 | A (100%) | #4127350
 5L ADVANTAGE 3267-221Y BUF CRK THE RIGHT KIND U199
 5L ADINA 195-3267
5L TOPGUN 560-65B
 5L BLACK ADINA 525-560 TC STOCKMAN 365
 5L ADINA 293-525
 HALFMANN SYNERGY MN A883 BROWN SYNERGY X7838
 HALFMAN MONAMS X468
HALFMANN DUTCHESS SY 339D
 DAMAR N312 DUTCHESS A339 LORENZEN WHAT'S GOOD
 DFRA DUTCHESS N312

Individual Data	
act. BW	77
SC	36.0
Frame	M

HerdBuilder 163 / Top 53% GridMaster 49 / Top 31%												
CED	BW	WW	ADG	DMI	YW	MLK	ME	HPG	CEM	STY	MRB	REA
16	-4.4	54	0.21	1.18	87	19	-6	12	8	13	0.43	0.20
9%	9%	73%	55%	31%	66%	92%	14%	22%	20%	78%	41%	18%
Age of Dam: 3 Dam Weight: 1065 dMPPA: 97												

TopGun is Select Sires' "Go-To" heifer project bull and ranks in the lowest 2% of Red Angus for birthweight with a "Rock Solid" accuracy of 88%. This guy is loaded with shape and natural thickness despite his best 9% rank for both calving ease and low birth weight.

31 **BSF Julian G742 N9**
 04-27-2019 | BSF : G742 | B (99.80%) | #4171706
 BECKTON JULIAN Z382 JZ BECKTON JULIAN X721 E6
 BECKTON LARKABA X064 J
BECKTON JULIAN E423 N8
 BECKTON BELGA B004 N BECKTON NEBULA Z111 N5
 BECKTON BELGA Z031 N
 BECKTON NEBULA X267 J3 BECKTON NEBULA T269 E2
 BECKTON INDIGO T613 JT
BSF HUSTELLE E785 N
 BSF HUSTELLE U447 HH BECKTON HALFMNNHUSTLR F
 BSF REGUS G191

Individual Data	
act. BW	50
SC	37.0
Frame	M

HerdBuilder 196 / Top 9% GridMaster 45 / Top 86%												
CED	BW	WW	ADG	DMI	YW	MLK	ME	HPG	CEM	STY	MRB	REA
19	-6.5	49	0.14	0.82	72	29	-3	12	10	18	0.42	-0.37
1%	1%	86%	92%	12%	90%	13%	27%	34%	5%	19%	42%	99%
Age of Dam: 2 Dam Weight: 780 dMPPA: 99												

32 **WCRA Julian G154**
 04-26-2019 | WCRA : G154 | A (100%) | #4149838
 BECKTON JULIAN X465 J5 BECKTON JULIAN G5 S107
 BECKTON SUFFEINA P643 J
BECKTON JULIAN A434 N6
 BECKTON LAKME T689 NX BECKTON NEXUS L016
 BECKTON LAKME M669 EP
 BECKTON NEBULA P P707 BECKTON NEBULA M045
 BECKTON LANA M809 EP
WCRA SIRRA E120 N
 BECKTON SIERRA C254 W BECKTON WARRIOR Y108 E5
 BECKTON SIERRA S065 LO

Individual Data	
act. BW	68
SC	40.0
Frame	M

HerdBuilder 172 / Top 38% GridMaster 49 / Top 28%												
CED	BW	WW	ADG	DMI	YW	MLK	ME	HPG	CEM	STY	MRB	REA
15	-3.6	61	0.26	1.48	102	25	2	13	6	15	0.51	-0.15
17%	17%	46%	17%	60%	31%	42%	58%	21%	65%	56%	24%	88%
Age of Dam: 2 Dam Weight: 750 dMPPA:												

Julian x Nebula P707 are two of the most trusted sire lines in Red Angus breed history. G154 spreads his best 17% Calving ease to Triple Digit growth and best 17% average daily gain (ADG) - thanks in large part to his performance ratios of 110 for both weaning and yearling.

34 **Beckton Likable G521 L6**
 04-01-2019 | BKT : G521 | A (100%) | #4170790
 BECKTON LIKABLE Z057 L4 BECKTON LIKABLE X445 J3
 BECKTON MINOLA X107 L
BECKTON LIKABLE B032 C5
 BECKTON MONA Z270 C BECKTON CLIFFTOP W577 E3
 BECKTON MONA U584 CD
 BECKTON LIKABLE Z057 L4 BECKTON LIKABLE X445 J3
 BECKTON MINOLA X107 L
BECKTON MINERVA D379 L
 BECKTON MINERVA W662 E BECKTON EPIC T330 L5
 BECKTON MINERVA T318 JC

Individual Data	
act. BW	63
SC	31.0
Frame	M+

HerdBuilder 182 / Top 22% GridMaster 50 / Top 18%												
CED	BW	WW	ADG	DMI	YW	MLK	ME	HPG	CEM	STY	MRB	REA
18	-6.2	43	0.27	1.06	86	25	3	11	6	16	0.55	-0.27
2%	1%	95%	15%	23%	70%	40%	67%	42%	65%	42%	18%	97%
Age of Dam: 3 Dam Weight: 1025 dMPPA: 99												

33 **Beckton Nebula G823 N4**
 05-22-2019 | BKT : G823 | A (100%) | #4170760
 BECKTON NEBULA P P707 BECKTON NEBULA M045
 BECKTON LANA M809 EP
BECKTON NEBULA B557 J3
 BECKTON LARKABA T813 JC BECKTON JUSTICE CH M056
 BECKTON LARKABA P645 JL
 BECKTON NEBULA Z111 N5 BECKTON NEBULA X096 N4
 BECKTON MINOLA X670 N
BECKTON LARKABA D757 N
 BECKTON LARKABA P645 JL BECKTON JULIAN GG B571
 BECKTON LARKABA L312 LN

Individual Data	
act. BW	73
SC	37.5
Frame	M-

HerdBuilder 192 / Top 11% GridMaster 51 / Top 10%												
CED	BW	WW	ADG	DMI	YW	MLK	ME	HPG	CEM	STY	MRB	REA
15	-4.2	56	0.24	0.78	94	26	1	11	5	18	0.57	-0.07
21%	11%	64%	34%	11%	51%	34%	55%	54%	82%	21%	15%	74%
Age of Dam: 3 Dam Weight: 950 dMPPA: 100												

G823 will help your bottom line regardless of whether you sell calves in the fall, retain replacements or retain ownership. His 11% and 10% ranks for HerdBuilder and GridMaster respectively are no doubt aided by his superior calving ease, cow herd longevity, marbling and low dry matter intake.

35 **HALFMANN BOURNE RN G498**
 02-11-2019 | CFH : G498 | A (100%) | #4127498
 5L ADVANTAGE 3267-221Y BUF CRK THE RIGHT KIND U199
 5L ADINA 195-3267
5L BOURNE 117-48A
 5L ROXIE 854-117 5L SIGNATURE 5615
 XXX ROXIE 854 MR
 BECKTON JULIAN A086 C6 BECKTON JULIAN X465 J5
 BKT PINE MARIE W102 C
HALFMANN ROBIN JL C316
 HALFMANN ROBIN SY A832 BROWN SYNERGY X7838
 HALFMANN ROBIN I551

Individual Data	
act. BW	73
SC	40.0
Frame	M

HerdBuilder 180 / Top 25% GridMaster 49 / Top 33%												
CED	BW	WW	ADG	DMI	YW	MLK	ME	HPG	CEM	STY	MRB	REA
16	-4.7	63	0.21	1.26	98	27	0	16	7	15	0.53	-0.11
10%	7%	34%	51%	38%	42%	22%	46%	2%	56%	56%	21%	82%
Age of Dam: 4 Dam Weight: 1190 dMPPA: 98												



Lot 35

SUPERIOR
 Livestock Auction
JIM KOLLMAN
 Superior Livestock Representative
 PO Box 5961
 San Angelo, TX
 76902
 432-770-5535
 www.superiorlivestock.com

We are proud to be an approved supplier of Superior Progressive Genetics! Superior Rep, Jim Kollman, from San Angelo does a great job getting our customers well paid for their investment in superior Red Angus genetics. Watch for Halfmann sired calves selling on Superior Livestock Video Auctions.

ROBERTSON LIVESTOCK
 Donnie Robertson
 Certified Ultrasound Technician
 Registered, Commercial & Feedlot
 4661 PR 4055 • Normangee, TX 77871
 Cell: 936.581.1844 • Email: crober86@aol.com

Red Angus EPDs have utilized Ultrasound data for over 20 years to identify variation in marbling, ribeye area and backfat. At Halfmann Red Angus we continue to invest in Robertson Livestock for the collection of this important data so that our customers can make the best informed bull selection decisions.



Lot 36

36 HALFMAN BOURNE AL G504

02-11-2019 | CFH: G504 | A (100%) | #4127508

5L ADVANTAGE 3267-221Y BUF CRK THE RIGHT KIND U199
5L ADINA 195-3267

5L BOURNE 117-48A
5L ROXIE 854-117 5L SIGNATURE 5615
XXX ROXIE 854 MR

LSF TAKEOVER 9943W HXC CONQUEST 4405P
LSF WIDELoad R5014 U8061

HALFMANN ALEXIS TO B038

HALFMANN ALEXIS NB Y602 BECKTON NEBULA P P707
HALFMANN MISS ALEXIS

Individual Data	
act. BW	87
SC	40.0
Frame	M

HerdBuilder 149 / Top 75% | GridMaster 49 / Top 24%

CED	BW	WW	ADG	DMI	YW	MLK	ME	HPG	CEM	STY	MRB	REA
11	-3.5	65	0.22	1.30	100	29	5	16	3	13	0.56	0.04
65%	19%	28%	46%	42%	35%	14%	82%	2%	96%	79%	16%	48%

Age of Dam: 5 | Dam Weight: 1250 | dMPPA: 109

38 HALFMAN TOPGUN SI G546

02-15-2019 | CFH: G546 | A (100%) | #4127548

5L ADVANTAGE 3267-221Y BUF CRK THE RIGHT KIND U199
5L ADINA 195-3267

5L TOPGUN 560-65B
5L BLACK ADINA 525-560 TC STOCKMAN 365
5L ADINA 293-525

BROWN SYNERGY X7838 BECKTON NEBULA P P707
C-BAR & BROWN ABIGRAE T7

HALFMANN SIERRA SY A900

HALFMANN SIERRA CH X563 HALFMANN CHATEAU L610
OLC SIERRA R417

Individual Data	
act. BW	75
SC	36.0
Frame	M

HerdBuilder 173 / Top 36% | GridMaster 49 / Top 23%

CED	BW	WW	ADG	DMI	YW	MLK	ME	HPG	CEM	STY	MRB	REA
17	-4.5	63	0.23	1.51	99	25	-2	12	10	14	0.54	0.15
6%	8%	36%	40%	62%	38%	40%	30%	26%	5%	73%	19%	26%

Age of Dam: 6 | Dam Weight: 1210 | dMPPA: 110

40 HALFMAN DEFENDER AL G543

02-14-2019 | CFH: G543 | A (100%) | #4127544

5L ADVOCATE 817-14W 5L SIGNATURE 5615
5L MARTA 345-817

5L DEFENDER 560-30Z
5L BLACK ADINA 525-560 TC STOCKMAN 365
5L ADINA 293-525

BECKTON ACCENT W180 C2 BECKTON CODY K1 P014
BECKTON CHRISTY R046 CQ

HALFMANN ALEXIS AC D460

HALFMANN ALEXIS TO B038 LSF TAKEOVER 9943W
HALFMANN ALEXIS NB Y602

Individual Data	
act. BW	79
SC	39.0
Frame	L

HerdBuilder 135 / Top 88% | GridMaster 49 / Top 21%

CED	BW	WW	ADG	DMI	YW	MLK	ME	HPG	CEM	STY	MRB	REA
15	-4.0	60	0.23	1.70	97	25	0	10	4	11	0.64	0.10
15%	13%	50%	36%	80%	44%	47%	42%	60%	92%	90%	8%	35%

Age of Dam: 3 | Dam Weight: 1115 | dMPPA: 103

Lot 39-40 - Three/Quarter Brothers: These Defender sons are similar in more ways than just their pedigree. Both are out of "Rising Stars" - young cows that have already impacted our herd with superior production. Both offer excellent calving ease without sacrificing payweight, gain, or big, well marbled loins.

41 BSF Epic G431 N7

03-27-2019 | BSF: G431 | B (99.90%) | #4245948

BECKTON EPIC X464 L5 BECKTON EPIC K6 S569
BECKTON LANA M393 LN

BECKTON EPIC B310 J6
BECKTON MINERVA Y116 J BECKTON JULIAN W743 H5
BECKTON MINERVA W081 N

BECKTON NEBULAA773 L4 BECKTON NEBULA T398 V3
BECKTON MONA X022 L

BSF NEBULANN D554 N

BSF NEBULANN A433 N BECKTON NEBULA W778 J4
BSF NEBULANN U242 NB

Individual Data	
act. BW	64
SC	37.5
Frame	M

HerdBuilder 193 / Top 11% | GridMaster 47 / Top 56%

CED	BW	WW	ADG	DMI	YW	MLK	ME	HPG	CEM	STY	MRB	REA
14	-2.5	63	0.2	1.11	95	25	-1	12	6	18	0.32	-0.11
26%	35%	37%	62%	26%	49%	45%	34%	23%	65%	14%	66%	82%

Age of Dam: 3 | Dam Weight: 920 | dMPPA: 101

43 Beckton Scamp G729 E6

04-24-2019 | BSF: G729 | A (100%) | #4171638

BECKTON SCAMP A627 J4 BECKTON SCAMP X494 E3
BECKTON SERENA R023 JC

BECKTON SCAMP D325 N5
BECKTON TAMARA Y039 N BECKTON NEBULA W065 C3
BECKTON TAMARA W232 J

BECKTON EMPEROR Y459 J3 BECKTON EMPEROR T641 E2
BECKTON INDIGO S354 JT

BECKTON ANGEL D155 E

BECKTON ANGEL U746 CD BECKTON CODY K1 P014
BECKTON ANGEL H164 LO

Individual Data	
act. BW	69
SC	33.0
Frame	M+

HerdBuilder 159 / Top 61% | GridMaster 48 / Top 51%

CED	BW	WW	ADG	DMI	YW	MLK	ME	HPG	CEM	STY	MRB	REA
17	-4.5	55	0.2	0.83	87	28	-2	10	9	13	0.26	-0.18
4%	8%	69%	62%	13%	67%	18%	31%	63%	19%	77%	82%	91%

Age of Dam: 3 | Dam Weight: 965 | dMPPA: 101

44 Beckton Accent G637 A4

04-11-2019 | BKT: G637 | A (100%) | #4170726

BECKTON ACCENT W180 C2 BECKTON CODY K1 P014
BECKTON CHRISTY R046 CQ

BECKTON ACCENT B740 W3
BECKTON LANA Y033 W BECKTON WARRIOR W534 N4
BECKTON LANA W370 E

BECKTON LEGEND B653 C2 BECKTON ACCENT U777 C2
BECKTON CHRISTY W779 C

BECKTON SUSAN D040 A

BECKTON SUSAN B246 N BECKTON NEW ERA Y194
BECKTON SUSAN R022 CQ

Individual Data	
act. BW	59
SC	38.0
Frame	M-

HerdBuilder 189 / Top 14% | GridMaster 47 / Top 66%

CED	BW	WW	ADG	DMI	YW	MLK	ME	HPG	CEM	STY	MRB	REA
21	-6.3	59	0.19	1.23	89	28	-3	11	8	17	0.34	0.00
1%	1%	53%	69%	35%	62%	20%	26%	39%	38%	35%	61%	58%

Age of Dam: 3 | Dam Weight: 860 | dMPPA: 104

When heifers have to calve without a lot of TLC, better look for elite calving ease, such as Lot 44. He ranks in the best 1% of all Red Angus for both easy calving and low birth weight.

42 Beckton Likable G404 W4

03-26-2019 | BKT: G404 | A (100%) | #4170134

BECKTON LIKABLE U130 L2 BECKTON LIKABLE S633
BECKTON KIT S478 LN

BECKTON LIKABLE C229 R3
BECKTON TAMARA X447 J BECKTON ROMAN J S158
BECKTON TAMARA R834 JC

BECKTON WARHAWK N560 BECKTON WARRIOR T1 H281
BECKTON FIREFLY H195 HD

BECKTON LARKABA R011 WA

BECKTON LARKABA N394 HR BECKTON HERALD FJ J776
BECKTON LARKABA F136 LN

Individual Data	
act. BW	76
SC	34.0
Frame	M+

HerdBuilder 177 / Top 29% | GridMaster 45 / Top 92%

CED	BW	WW	ADG	DMI	YW	MLK	ME	HPG	CEM	STY	MRB	REA
18	-4.7	42	0.15	0.76	67	22	0	15	8	16	0.26	-0.26
2%	7%	96%	89%	10%	94%	77%	45%	5%	24%	42%	82%	97%

Age of Dam: 14 | Dam Weight: 1060 | dMPPA: 99

Lowering annual cow depreciation costs and reducing replacement rates so that a larger percentage of the heifer calves can be cash-cropped is a great strategy for sustained profit and requires like Lot 42 - who come from dams that are built to last.



Lot 42

45 BSF Accent G714 A4

04-21-2019 | BKB: G714 | B (99.90%) | #4165170

BECKTON ACCENT U777 C2 BECKTON CODY K1 P014
BECKTON SUSAN R022 CQ

BECKTON LEGEND B653 C2
BECKTON CHRISTY W779 C BKT CLIFFTOP TP R288
BECKTON CHRISTY S151 NB

BECKTON ACCENT Y260 L3 BECKTON ACCENT W180 C2
BECKTON LANA W463 L

BSF JULIA C614 A

BSF JULIA Z264 L BECKTON LOKI X507 L4
BSF JULIA X752 L

Individual Data	
act. BW	61
SC	36.5
Frame	M

HerdBuilder 181 / Top 23% | GridMaster 47 / Top 69%

CED	BW	WW	ADG	DMI	YW	MLK	ME	HPG	CEM	STY	MRB	REA
18	-4.8	50	0.2	1.10	82	28	-2	11	5	17	0.38	-0.18
3%	6%	83%	62%	25%	76%	15%	30%	52%	84%	25%	51%	91%

Age of Dam: 4 | Dam Weight: 990 | dMPPA: 99



Lot 46

46 HALFMAN ORACLE RO G557

02-19-2019 CFH: G557 A (100%) #4127560
<u>BROWN REVELATION P7021</u> BFCK CHEROKEE CNYN 4912 BROWN MS VICILA M7799
BROWN ORACLE B112 BROWN MS P707 Y6648
BECKTON NEBULA P P707 BROWN MS JULIAN W6579
BECKTON CLIFFTOP W692 E3
BKT CLIFFTOP TP R288 BECKTON LYDIA S274 EP
BECKTON ROSE A417 C BECKTON ROSE W063 H
BECKTON HERITAGE T270 J2 BECKTON ROSE T297 JR
Individual Data
act. BW 69
SC 36.0
Frame M

HerdBuilder 180 / Top 25% GridMaster 51 / Top 8%
CED BW WW ADG DMI YW MLK ME HPG CEM STY MRB REA
17 -4.6 64 0.24 1.07 103 22 -2 5 8 16 0.57 0.16
6% 8% 31% 28% 24% 29% 76% 29% 98% 20% 50% 15% 23%
Age of Dam: 6 Dam Weight: 1145 dMPPA: 94

19 Outstanding Oracle sons are in this sale and they can't all be Lot 1. G557 puts 11 traits in the top 1/3 of the breed including a 17 CED to 103 YW spread.



Lot 47

47 HALFMAN ORACLE SU G505

02-11-2019 GKH: G505 A (100%) #4127352
<u>BROWN REVELATION P7021</u> BFCK CHEROKEE CNYN 4912 BROWN MS VICILA M7799
BROWN ORACLE B112 BROWN MS P707 Y6648
BECKTON NEBULA P P707 BROWN MS JULIAN W6579
BECKTON EPIC K3 M606
BECKTON EPIC KJ J722 BECKTON LANAF268 CT
BKT SUFFEINA T500 EP BECKTON SUFFEINA N844 LN
BECKTON LANCER T1 H080 BKT SUFFEINA H693 LN
Individual Data
act. BW 82
SC 38.0
Frame M

HerdBuilder 177 / Top 29% GridMaster 50 / Top 12%
CED BW WW ADG DMI YW MLK ME HPG CEM STY MRB REA
16 -3.6 58 0.24 1.00 96 22 1 2 8 17 0.51 0.16
9% 17% 57% 34% 20% 46% 75% 50% 98% 22% 37% 24% 23%
Age of Dam: 12 Dam Weight: 975 dMPPA: 98

If you like to buy bulls out of cows that have made it through a few droughts and hard winters, consider G505. This Oracle son's 12 year old dam has stood the test of time and still gets bred AI.

48 HALFMAN ORACLE LK G524

02-12-2019 CFH: G524 A (100%) #4127524
<u>BROWN REVELATION P7021</u> BFCK CHEROKEE CNYN 4912 BROWN MS VICILA M7799
BROWN ORACLE B112 BROWN MS P707 Y6648
BECKTON NEBULA P P707 BROWN MS JULIAN W6579
BECKTON LEGEND S670
BECKTON LANCER F442 T BECKTON KIT F468 JL
BECKTON LARKABA U153 LE BECKTON LARKABA S299 EP
BECKTON EPIC K4 N795 BECKTON LARKABA D170 JV
Individual Data
act. BW 80
SC 35.0
Frame M

HerdBuilder 181 / Top 23% GridMaster 51 / Top 9%
CED BW WW ADG DMI YW MLK ME HPG CEM STY MRB REA
16 -2.7 64 0.22 0.96 99 20 0 6 8 16 0.54 0.24
12% 31% 31% 47% 18% 38% 87% 41% 97% 35% 42% 19% 13%
Age of Dam: 11 Dam Weight: 1100 dMPPA: 96

49 HALFMAN ORACLE AK G535

02-13-2019 GKH: G535 A (100%) #4127380
<u>BROWN REVELATION P7021</u> BFCK CHEROKEE CNYN 4912 BROWN MS VICILA M7799
BROWN ORACLE B112 BROWN MS P707 Y6648
BECKTON NEBULA P P707 BROWN MS JULIAN W6579
HALFMAN NEBULA MT Z725
BECKTON NEBULA P P707 HALFMAN MATTIE T336
HALFMAN ANKATA NB C314 HALFMAN ANKATA U393
BECKTON HALFMAN HUSTLER F HALFMAN ANKATA L607
Individual Data
act. BW 69
SC 36.0
Frame M

HerdBuilder 203 / Top 5% GridMaster 51 / Top 6%
CED BW WW ADG DMI YW MLK ME HPG CEM STY MRB REA
15 -3.5 66 0.29 1.58 113 20 10 8 8 19 0.50 0.32
17% 19% 24% 5% 70% 12% 88% 99% 94% 29% 11% 26% 6%
Age of Dam: 4 Dam Weight: 1280 dMPPA: 98

G535 represents a lot of Horse Power starting with just a 69 lb birth weight. If you have a big group of cows to breed, consider turning out a complete sire group - like the four Oracle sons on this page. That will result in a calf crop that converts feed similarly and finishes closer to the harvest date.

- HB** – HerdBuilder is a maternally focused selection index that predicts the probability of developing profitable cowherd traits while maximizing the value of marketed progeny. Expressed as dollars per cow exposure, HB is calculated based on the scenario that bulls are mated to heifers and cows, replacement heifers are retained, and all remaining progeny are marketed on a quality-based carcass grid. (Index/High Value)
- GM** – GridMaster is a terminally focused selection index that predicts the probability to increase the value of marketed calves. GM places selection pressure on growth, feedyard performance and carcass quality, predicting differences in profit as expressed per cow exposure. GM is calculated based on the scenario that bulls are mated to cows only, and all progeny are marketed on a quality-based carcass grid. (Index/High Value)
- CED** – Calving Ease Direct predicts differences in the percent of calves born unassisted out of 2-year-old dams. (Percent/High Value)
- BW** – Birth Weight predicts differences in actual birth weight of progeny. (Pounds/Low Value)
- WW** – Weaning Weight predicts differences in 205-day weaning weight. (Pounds/High Value)
- YW** – Yearling Weight predicts differences in 365-day yearling weight. (Pounds/High Value)
- ADG** – Average Daily Gain predicts differences in weight gain between 205 and 365 days of age. (Pounds/High Value)
- DMI** – Dry Matter Intake predicts differences in daily feed intake as measured in a feedlot during the post-weaning period. (Pounds/Low Value)

- MILK** – Milk predicts differences in weaning weight attributed to the milking ability of the animal's daughters. (Pounds/High Value)
- HPG** – Heifer Pregnancy predicts differences in the percent of daughters who are able to conceive and calve at 2 years of age following exposure to breeding. (Percent/High Value)
- CEM** – Calving Ease Maternal predicts differences in the percent of daughters who are able to calve unassisted as 2-year-old heifers. (Percent/High Value)
- STAY** – Stayability predicts differences in the ability of an animals' retained daughters to remain productive in the herd – calve every year – through 6 years of age. (Percent/High Value)
- MARB** – Marbling predicts differences in marbling score – amount of intramuscular fat measured at the 13th rib. (Marbling Score Units/High Value)
- YG** – Yield Grade predicts differences in USDA Yield Grade, which is calculated using CW, REA and Fat. (Yield Grade Units/Low Value)
- CW** – Carcass Weight predicts differences in actual hot carcass weight. (Pounds/High Value)
- REA** – Ribeye Area predicts differences in square inches of ribeye area measured at the 13th rib. (Square Inches/High Value)
- FAT** – Fat predicts differences in the depth of backfat measured between the 12th and 13th ribs. (Inches/Low Value)



Ranch Tested. Rancher Trusted.

Red Angus

For more information, visit RedAngus.org.



50 HALFMAN NEBULA CH G487
 02-10-2019 | CTH: G487 | A (100%) | #4127656

BECKTON NEBULA M045
 BECKTON NEPTUNE R2 K065
 BECKTON BELGA K285 JL

BECKTON NEBULA P P707
 BECKTON LANA M809 EP
 BECKTON EPIC K1 K863
 BECKTON LANA K253 DM

BUF CRK THE RIGHT KIND U199
 BUF CRK LANCER R017
 BUF CRK SHOSHONE R353

HALFMANN CHIEF RK C258
 HALFMANN CHIEF DV Z707
 HALFMANN DIVIDEND U398
 HALFMANN CHIEF S506

Individual Data	
act. BW	85
SC	34.0
Frame	M

HerdBuilder 180 / Top 24% | GridMaster 49 / Top 32%

CED	BW	WW	ADG	DMI	YW	MLK	ME	HPG	CEM	STY	MRB	REA
12	-2.5	54	0.21	1.05	88	27	1	11	6	18	0.58	-0.24
54%	35%	72%	52%	23%	64%	28%	49%	56%	73%	22%	14%	96%

Age of Dam: 4 | Dam Weight: 1255 | dMPPA: 101

Lots 50 & 51 are direct sons of P707 - one of the most influential and most proven sires in Red Angus history.

51 HALFMAN NEBULA MA G518
 02-12-2019 | GKH: G518 | A (100%) | #4127362

BECKTON NEBULA M045
 BECKTON NEPTUNE R2 K065
 BECKTON BELGA K285 JL

BECKTON NEBULA P P707
 BECKTON LANA M809 EP
 BECKTON EPIC K1 K863
 BECKTON LANA K253 DM

HALFMANN NEBULAAL Y593
 BECKTON NEBULA P P707
 HALFMANN ALEXIS U352

HALFMANN MATTIE NB A816
 HALFMANN MATTIE CH Y660
 HALFMANN CHATEAU U335
 HALFMANN MATTIE U334

Individual Data	
act. BW	70
SC	42.0
Frame	M

HerdBuilder 197 / Top 8% | GridMaster 49 / Top 31%

CED	BW	WW	ADG	DMI	YW	MLK	ME	HPG	CEM	STY	MRB	REA
16	-5.7	52	0.24	1.27	90	29	0	10	8	19	0.66	-0.33
8%	3%	79%	31%	39%	60%	13%	48%	74%	32%	13%	7%	99%

Age of Dam: 6 | Dam Weight: 1270 | dMPPA: 102

This linebred P707 earns his top 8% HerdBuilder by combining calving ease with stayability, gain and carcass quality.

52 HALFMAN SYNERGY CH G593
 03-16-2019 | CFH: G593 | A (100%) | #4127600

BECKTON NEBULA P P707
 BECKTON NEBULA M045
 BECKTON LANA M809 EP

BROWN SYNERGY X7838
 CBAR BROWN ABIGRACE T714
 LJC MISSION STATEMENT P27
 BROWN MS ABIGRACE L7730

BECKTON NEBULA P P707
 BECKTON NEBULA M045
 BECKTON LANA M809 EP

BECKTON CHRISTY A234 N
 BECKTON CHRISTY X526 L
 BECKTON LOKI CL S284
 BECKTON CHRISTY R046 CQ

Individual Data	
act. BW	73
SC	36.0
Frame	M

HerdBuilder 203 / Top 4% | GridMaster 49 / Top 30%

CED	BW	WW	ADG	DMI	YW	MLK	ME	HPG	CEM	STY	MRB	REA
17	-5.4	57	0.24	1.42	95	32	-1	10	10	18	0.63	-0.30
5%	4%	63%	32%	54%	49%	3%	35%	71%	5%	14%	9%	98%

Age of Dam: 6 | Dam Weight: 1355 | dMPPA: 103

54 HALFMAN SYNERGY LK G595
 03-18-2019 | CFH: G595 | A (100%) | #4127602

BECKTON NEBULA P P707
 BECKTON NEBULA M045
 BECKTON LANA M809 EP

BROWN SYNERGY X7838
 CBAR BROWN ABIGRACE T714
 LJC MISSION STATEMENT P27
 BROWN MS ABIGRACE L7730

BECKTON JULIAN U699 L5
 BECKTON JULIAN G1 J526
 BECKTON ROSE L311 LN

BECKTON LARKABA Z951 J
 BECKTON LARKABA U062 CB
 BECKTON COBALT S029
 BECKTON LARKABA S374 NB

Individual Data	
act. BW	70
SC	37.0
Frame	M

HerdBuilder 195 / Top 9% | GridMaster 48 / Top 44%

CED	BW	WW	ADG	DMI	YW	MLK	ME	HPG	CEM	STY	MRB	REA
19	-7.3	49	0.19	1.00	80	29	-8	10	11	17	0.63	-0.33
1%	1%	86%	67%	20%	80%	11%	7%	60%	1%	34%	9%	99%

Age of Dam: 7 | Dam Weight: 1195 | dMPPA: 97

Lots 52-54 - Half-Brothers by Synergy: These Synergy sons defy the antagonisms with single digit ranks for both direct and maternal calving ease - which means a higher percentage of calves weaned. All three of them come from highly fertile proven dams that have passed their 6 year stayability threshold - no wonder these half brothers excel for STAY.

55 WCRA Julian G153
 04-25-2019 | WCRA: G153 | A (100%) | #4149824

BECKTON JULIAN X465 J5
 BECKTON JULIAN G5 S107
 BECKTON SUFFEINA P643 J

BECKTON JULIAN A434 N6
 BECKTON LAKME T689 NX
 BECKTON NEXUS L016
 BECKTON LAKME M669 EP

BECKTON JULIAN A434 N6
 BECKTON JULIAN X465 J5
 BECKTON LAKME T689 NX

WCRA PINE MARIE D111 J
 CARPENTER PINE MARIE BOO3 N
 BECKTON NEBULA P P707
 BKT PINE MARIE Z513 W

Individual Data	
act. BW	76
SC	36.5
Frame	M

HerdBuilder 165 / Top 51% | GridMaster 50 / Top 20%

CED	BW	WW	ADG	DMI	YW	MLK	ME	HPG	CEM	STY	MRB	REA
11	-1.4	67	0.23	0.98	103	20	-2	14	4	15	0.48	-0.22
73%	57%	21%	42%	19%	29%	89%	31%	9%	95%	60%	29%	95%

Age of Dam: 3 | Dam Weight: | dMPPA: 99

"We feed it year around and see an increase in conception rates, calf survivability and cow condition. We feed it and believe in it 365 days a year."

- Glen, Cody and Chad Halfmann
Halfmann Red Angus

800-575-7585
WWW.MIX30.COM

EASLEY TRAILER MFG.
 ...built tough for the long haul
 Div. of Wilson Trailer Mfg., Inc.
 (325) 823-4333
 (325) 823-4115 FAX

RAY WILSON
 BOBBY WILSON
 MICHAEL WILSON

BOX 388
 Anson, TX 79501



Lot 56

56 BSF G488

03-30-2019 | BSF : G488 | A (100%) | #4171538

BECKTON NEBULA M045 | BECKTON NEPTUNE R2 K065
BECKTON BELGA K285 JL

BECKTON NEBULA E P084
BKT PINE MARIE M119 EP | BECKTON EPIC K F075
BKT PINE MARIE D126 JL

BECKTON WARRIOR Y108 E5 | BECKTON WARRIOR W534 N4
BECKTON SUSAN W058 E

BECKTON LANA C819 W
BECKTON LANA U789 NB | BECKTON NEBULA M045
BECKTON LANA P073 EP

Individual Data	
act. BW	65
SC	35.5
Frame	M

HerdBuilder 167 / Top 52% | GridMaster 46 / Top 55%

CED	BW	WW	ADG	DMI	YW	MLK	ME	HPG	CEM	STY	MRB	REA
20	-7.3	48	0.22	0.89	83	30	0	13	10	14	0.2548	-0.22
1%	1%	83%	34%	15%	65%	13%	42%	19%	7%	83%	74%	90%

Age of Dam: 11 | Dam Weight: 1175 | dMPPA:

Sells without registration papers.

58 Beckton Likable G842 D5

05-30-2019 | BKT : G842 | A (100%) | #4171092

BECKTON LIKABLE Y124 L3 | BECKTON LIKABLE U130 L2
BKT PINE MARIE S802 LO

BECKTON LIKABLE E391 N4
BECKTON LANA X466 N | BECKTON NEBULA T398 V3
BECKTON LANA T226 NB

BECKTON DOMINOR C052 E8 | BECKTON DOMINOR A378 W7
BECKTON SCARLETT A406 E

BECKTON PINE MARIE E185 D
BECKTON PINE MARIE C652 J | BECKTON JANUS X799 L2
BKT PINE MARIE X339 N

Individual Data	
act. BW	82
SC	34.5
Frame	M

HerdBuilder 192 / Top 11% | GridMaster 51 / Top 6%

CED	BW	WW	ADG	DMI	YW	MLK	ME	HPG	CEM	STY	MRB	REA
14	-1.2	64	0.28	0.81	109	31	2	11	7	17	0.38	-0.02
23%	61%	30%	9%	12%	17%	5%	63%	39%	58%	32%	51%	63%

Age of Dam: 2 | Dam Weight: 725 | dMPPA: 105

60 Beckton Likable G379 N4

03-24-2019 | BKT : G379 | A (100%) | #4170506

BECKTON LIKABLE U130 L2 | BECKTON LIKABLE S633
BECKTON KIT S478 LN

BECKTON LIKABLE C229 R3
BECKTON TAMARA X447 J | BECKTON ROMAN J S158
BECKTON TAMARA R834 JC

BECKTON NEBULA W778 J4 | BECKTON NEBULA PJ S543
BECKTON LANAS197 JT

BECKTON PINE MARIE B572 N
BKT PINE MARIE X249 N | BECKTON NEBULA T269 E2
BKT PINE MARIE M119 EP

Individual Data	
act. BW	65
SC	34.0
Frame	M

HerdBuilder 181 / Top 23% | GridMaster 44 / Top 96%

CED	BW	WW	ADG	DMI	YW	MLK	ME	HPG	CEM	STY	MRB	REA
18	-5.6	42	0.09	0.56	56	20	-2	11	8	18	0.38	-0.28
3%	3%	96%	99%	5%	98%	87%	29%	56%	24%	20%	51%	98%

Age of Dam: 5 | Dam Weight: 1125 | dMPPA: 92

61 HALFMANN BOURNE CO G499

02-11-2019 | CFH : G499 | A (100%) | #4127500

5L ADVANTAGE 3267-221Y | BUF CRK THE RIGHT KIND U199
5LADINA 195-3267

5L BOURNE 117-48A
5L ROXIE 854-117 | 5L SIGNATURE 5615
XXX ROXIE 854 MR

BECKTON NEBULA M045 | BECKTON NEPTUNE R2 K065
BECKTON BELGA K285 JL

BECKTON COCA T168 NB
BECKTON COCA H256 JL | BKT JULIAN 7526 G
BECKTON COCA D283 JV

Individual Data	
act. BW	70
SC	39.0
Frame	M

HerdBuilder 197 / Top 8% | GridMaster 48 / Top 52%

CED	BW	WW	ADG	DMI	YW	MLK	ME	HPG	CEM	STY	MRB	REA
16	-5.5	61	0.2	1.07	93	21	-4	18	6	17	0.40	-0.18
8%	3%	45%	60%	24%	52%	80%	21%	1%	74%	26%	46%	91%

Age of Dam: 12 | Dam Weight: 1340 | dMPPA: 98

This Bourne son is loaded with cow herd building traits - capped off with a 1% rank for heifer pregnancy rate. And it's no surprise - his dam is a proven source of fertility and longevity.

63 HALFMANN TOPGUN AK G470

02-09-2019 | GKH : G470 | A (100%) | #4127332

5L ADVANTAGE 3267-221Y | BUF CRK THE RIGHT KIND U199
5LADINA 195-3267

5L TOPGUN 560-65B
5L BLACK ADINA 525-560 | TC STOCKMAN 365
5LADINA 293-525

BECKTON NEW ERA Y194 | BECKTON NEBULA P P707
BKT LARKEISA T310 JC

HALFMANN ANKATA NE B005
HALFMANN ANKATA PK Z718 | MESSMER PACKER S008
HALFMANN ANKATA U393

Individual Data	
act. BW	92
SC	40.0
Frame	M+

HerdBuilder 180 / Top 25% | GridMaster 50 / Top 14%

CED	BW	WW	ADG	DMI	YW	MLK	ME	HPG	CEM	STY	MRB	REA
15	-2.8	75	0.29	1.80	121	23	5	13	8	15	0.36	0.26
18%	29%	6%	6%	86%	5%	69%	82%	13%	38%	58%	57%	11%

Age of Dam: 5 | Dam Weight: 1290 | dMPPA: 109



Lots 63 & 65 - Top Gun Sons: Here's three Top Gun sons that are out of important, heavy producing cows in our program with an average MPPA of 107. All three come with excellent spread from calving ease to yearling weight.

62 HALFMANN BOURNE LA G448

02-06-2019 | GKH : G448 | A (100%) | #4127308

5L ADVANTAGE 3267-221Y | BUF CRK THE RIGHT KIND U199
5LADINA 195-3267

5L BOURNE 117-48A
5L ROXIE 854-117 | 5L SIGNATURE 5615
XXX ROXIE 854 MR

BECKTON CLIFFTOP W692 E3 | BKT CLIFFTOP TP R288
BECKTON LYDIAS274 EP

HALFMANN LANA CL A898
BECKTON LANA U574 JL | BECKTON JULIAN G3 P608
BECKTON LANA R241 JC

Individual Data	
act. BW	72
SC	38.0
Frame	M+

HerdBuilder 168 / Top 44% | GridMaster 50 / Top 18%

CED	BW	WW	ADG	DMI	YW	MLK	ME	HPG	CEM	STY	MRB	REA
16	-5.3	64	0.23	1.30	100	24	-9	13	6	14	0.56	0.04
7%	4%	33%	42%	41%	36%	56%	4%	19%	65%	76%	16%	48%

Age of Dam: 6 | Dam Weight: 1250 | dMPPA: 102

64 HALFMANN TOPGUN SI G471

02-09-2019 | CFH : G471 | A (100%) | #4127476

5L ADVANTAGE 3267-221Y | BUF CRK THE RIGHT KIND U199
5LADINA 195-3267

5L TOPGUN 560-65B
5L BLACK ADINA 525-560 | TC STOCKMAN 365
5LADINA 293-525

BECKTON HALFMANNHUSTLER R588 | BECKTON HUSTLER CN J102
BECKTON VERNICE F513 CL

HALFMANN SIERRA HU C234
HALFMANN SIERRA SY A900 | BROWN SYNERGY X7838
HALFMANN SIERRA CH X563

Individual Data	
act. BW	78
SC	39.0
Frame	M+

HerdBuilder 174 / Top 34% | GridMaster 50 / Top 18%

CED	BW	WW	ADG	DMI	YW	MLK	ME	HPG	CEM	STY	MRB	REA
16	-4.1	61	0.25	1.42	101	21	3	13	9	14	0.46	0.14
7%	12%	46%	24%	54%	34%	80%	70%	15%	15%	70%	33%	27%

Age of Dam: 4 | Dam Weight: 1315 | dMPPA: 103

65 HALFMANN TOPGUN CH G486

02-10-2019 | CTH : G486 | A (100%) | #4127654

5L ADVANTAGE 3267-221Y | BUF CRK THE RIGHT KIND U199
5LADINA 195-3267

5L TOPGUN 560-65B
5L BLACK ADINA 525-560 | TC STOCKMAN 365
5LADINA 293-525

BECKTON NEW ERA Y194 | BECKTON NEBULA P P707
BKT LARKEISA T310 JC

HALFMANN CHIEF NE C257
HALFMANN CHIEF WR Y591 | BECKTON WARRIOR N645 T1
HALFMANN CHIEF W413

Individual Data	
act. BW	82
SC	40.0
Frame	M+

HerdBuilder 167 / Top 46% | GridMaster 49 / Top 29%

CED	BW	WW	ADG	DMI	YW	MLK	ME	HPG	CEM	STY	MRB	REA
16	-3.6	61	0.22	1.32	97	21	-1	12	7	14	0.53	-0.01
10%	17%	42%	43%	44%	42%	83%	36%	21%	44%	71%	21%	62%

Age of Dam: 4 | Dam Weight: 1320 | dMPPA: 108

57 Beckton Likable G850 A5

06-04-2019 | BKT : G850 | A (100%) | #4171036

BECKTON LIKABLE Y124 L3 | BECKTON LIKABLE U130 L2
BKT PINE MARIE S802 LO

BECKTON LIKABLE E391 N4
BECKTON LANA X466 N | BECKTON NEBULA T398 V3
BECKTON LANA T226 NB

BECKTON ACCENT B553 L2 | BECKTON ACCENT U777 C2
BECKTON LANA X839 L

BECKTON COCA E365 A
BECKTON COCAA213 E | BECKTON EPIC Y484 N6
BECKTON COCA Y660 E

Individual Data	
act. BW	82
SC	35.0
Frame	M

HerdBuilder 190 / Top 13% | GridMaster 51 / Top 8%

CED	BW	WW	ADG	DMI	YW	MLK	ME	HPG	CEM	STY	MRB	REA
14	-1.6	67	0.28	0.98	111	26	2	11	6	17	0.40	0.00
28%	53%	23%	11%	19%	15%	36%	62%	45%	67%	31%	46%	58%

Age of Dam: 2 | Dam Weight: 745 | dMPPA: 100

Lot 57 & 58 - Half-Brothers by Likable: Almost halfway through the offering we find two of the best balanced bulls in the entire offering. These brothers average best 25% calving ease and 110 YW EPD and top 10% rank for Gain (ADG), which is supported by their top 8% ranking for GridMaster index.

59 BSF G076

03-8-2019 | BSF : G076 | 100% | #

Red Angus Sire

Red Angus Dam

Individual Data	
act. BW	50
SC	35.0
Frame	M-

Sells without registration papers.



66 HALFMAN TAKEOVER AL G583

03-07-2019 | CFH : G583 | A (100%) | #4127588
 LSF TAKEOVER 9943W HXC CONQUEST 4405P
 LSF WIDELOAD R5014 U8061
HALFMAN TAKEOVER SM G214
 HALFMAN SANDMN NB Z708 BECKTON NEBULA P P707
 HALFMAN SANDMAN M601
 LJC MISSION STATEMENT P27 LJC LANCER 806
 LJC HANNAH 106
HALFMAN ALEXIS U352
 HALFMAN ALEXIS L621 OLC CHATEAU L416
 HALFMAN MISS ALEXIS

Individual Data	
act. BW	
SC	37.0
Frame	M+

HerdBuilder 160 / Top 58% | GridMaster 49 / Top 25%

CED	BW	WW	ADG	DMI	YW	MLK	ME	HPG	CEM	STY	MRB	REA
15	-3.5	56	0.26	1.36	97	26	2	9	7	14	0.49	0.00
15%	19%	64%	20%	47%	43%	35%	59%	81%	43%	70%	28%	58%

Age of Dam: 11 | Dam Weight: 1145 | dMPPA: 101

If you like herd bulls out of dams that stand the test of time, take a good look at G583. His dam is ideal - with a mature weight of under 1150 lbs and still maintaining an above average MPPA as an 11 year old.

68 Beckton Accent G248 W3

03-18-2019 | BSF : G248 | A (100%) | #4171676
 BECKTON ACCENT U777 C2 BECKTON CODY K1 P014
 BECKTON SUSAN R022 CQ
BECKTON ACCENT B553 L2
 BECKTON LANA X839 L BECKTON LEGEND S670
 BECKTON LANA S371 DM
 BECKTON WARRIOR Y108 E5 BECKTON WARRIOR W534 N4
 BECKTON SUSAN W058 E
BECKTON COCA D237 W
 BECKTON COCA Y579 H BECKTON HASTEN U108 J3
 BECKTON COCA T080 NB

Individual Data	
act. BW	60
SC	33.5
Frame	M-

HerdBuilder 163 / Top 54% | GridMaster 45 / Top 84%

CED	BW	WW	ADG	DMI	YW	MLK	ME	HPG	CEM	STY	MRB	REA
19	-6.0	35	0.17	0.71	63	22	-6	12	8	14	0.36	-0.31
1%	2%	99%	79%	9%	96%	74%	11%	26%	35%	66%	57%	98%

Age of Dam: 3 | Dam Weight: 965 | dMPPA: 90

70 BSF Legend G297 N5

03-20-2019 | BSF : G297 | B (99.80%) | #4171804
 BECKTON LEGEND Z689 J3 BECKTON LEGEND X561 J2
 BECKTON LARKABA W868 J
BECKTON LEGEND E464 L4
 BECKTON UCOLA X143 L BECKTON LIKABLE U120 L2
 BECKTON UCOLA U709 LO
 BECKTON NEBULA Z111 N5 BECKTON NEBULA X096 N4
 BECKTON MINOLA X670 N
BSF NEBULANN E818 N
 B195 BECKTON LEGEND S670
 BSF NEBULANN Y217 N

Individual Data	
act. BW	70
SC	33.5
Frame	M-

HerdBuilder 177 / Top 29% | GridMaster 48 / Top 37%

CED	BW	WW	ADG	DMI	YW	MLK	ME	HPG	CEM	STY	MRB	REA
15	-1.5	55	0.2	0.81	86	24	0	11	7	16	0.44	-0.14
13%	54%	70%	63%	12%	68%	58%	46%	50%	51%	42%	37%	87%

Age of Dam: 2 | Dam Weight: 725 | dMPPA: 97

71 Beckton Epic G633 A7

04-11-2019 | BKT : G633 | A (100%) | #4170852
 BECKTON EPIC X464 L5 BECKTON EPIC K6 S569
 BECKTON LANA M393 LN
BECKTON EPIC B310 J6
 BECKTON MINERVA Y116 J BECKTON JULIAN W743 H5
 BECKTON MINERVA W081 N
 BECKTON ACCENT U777 C2 BECKTON CODY K1 P014
 BECKTON SUSAN R022 CQ
BECKTON FIREFLY D489 A
 BECKTON FIREFLY W021 H BECKTON HERITAGE T270 J2
 BECKTON FIREFLY T028 JR

Individual Data	
act. BW	64
SC	34.0
Frame	M-

HerdBuilder 153 / Top 70% | GridMaster 44 / Top 96%

CED	BW	WW	ADG	DMI	YW	MLK	ME	HPG	CEM	STY	MRB	REA
15	-3.6	55	0.13	1.24	77	28	0	12	7	15	0.30	-0.28
13%	17%	68%	95%	36%	85%	15%	40%	25%	56%	61%	72%	98%

Age of Dam: 3 | Dam Weight: 965 | dMPPA:

73 HALFMAN ORACLE LA G521

02-12-2019 | GKH : G521 | A (100%) | #4127364
 BROWN REVELATION P7021 BFCK CHEROKEE CNYN 4912
 BROWN MS VICILA M7799
BROWN ORACLE B112
 BROWN MS P707 Y6648 BECKTON NEBULA P P707
 BROWN MS JULIAN W6579
 BROWN SYNERGY X7838 BECKTON NEBULA P P707
 C-BAR & BROWN ABIGRACE T7
HALFMAN LANA SY G248
 HALFMAN LANA CLA898 BECKTON CLIFFTOP W692 E3
 BECKTON LANA U574 JL

Individual Data	
act. BW	94
SC	39.0
Frame	M+

HerdBuilder 197 / Top 7% | GridMaster 53 / Top 1%

CED	BW	WW	ADG	DMI	YW	MLK	ME	HPG	CEM	STY	MRB	REA
13	-1.6	78	0.33	1.83	130	24	2	6	8	18	0.64	0.25
35%	53%	3%	1%	88%	2%	55%	57%	97%	35%	22%	8%	12%

Age of Dam: 4 | Dam Weight: 1130 | dMPPA: 103

Lot 73 - 75 - Half-Brothers by Oracle: Over halfway through the offering and we find a set of Oracle x P707 bred Power Bulls. Turn these three age advantage bulls out with a big group of cows and you might need an extra truck to haul the calves to market. This trio of top performers average 108 YW ratio and 109 IMF ratio. Even better, they average Top 9% HerdBuilder, Top 3% GridMaster, Top 8% YW and Top 9% Marbling.

75 HALFMAN ORACLE CH G496

02-11-2019 | CFH : G496 | A (100%) | #4127496
 BROWN REVELATION P7021 BFCK CHEROKEE CNYN 4912
 BROWN MS VICILA M7799
BROWN ORACLE B112
 BROWN MS P707 Y6648 BECKTON NEBULA P P707
 BROWN MS JULIAN W6579
 BECKTON NEBULA P P707 BECKTON NEBULA M045
 BECKTON LANA M809 EP
HALFMAN CHIEF NB C253
 HALFMAN CHIEF MS Y616 HALFMAN MSN STATEMENT
 HALFMAN CHIEF S506

Individual Data	
act. BW	88
SC	38.0
Frame	M

HerdBuilder 195 / Top 9% | GridMaster 52 / Top 4%

CED	BW	WW	ADG	DMI	YW	MLK	ME	HPG	CEM	STY	MRB	REA
13	-2.3	70	0.26	1.46	112	25	4	8	6	18	0.73	0.22
43%	39%	13%	17%	57%	13%	44%	80%	94%	65%	15%	3%	15%

Age of Dam: 4 | Dam Weight: 1180 | dMPPA: 104

72 Beckton Scamp G346 A6

03-23-2019 | BSF : G346 | 2 (100%) | #4171246
 BECKTON LIKABLE U130 L2 BECKTON LIKABLE S633
 BECKTON KIT S478 LN
BECKTON LIKABLE C229 R3
 BECKTON TAMARA X447 J BECKTON ROMAN J S158
 BECKTON TAMARA R834 JC
 BECKTON DOMINOR Z1 R610 BECKTON DOMINOR ZC M919
 BECKTON SIERRAK557 LO
BECKTON CHRISTY X648 D
 BECKTON CHRISTY J743 JL BECKTON JULIAN GG B571
 BECKTON CHRISTY A111 VQ

Individual Data	
act. BW	68
SC	31.5
Frame	M-

HerdBuilder 201 / Top 5% | GridMaster 49 / Top 29%

CED	BW	WW	ADG	DMI	YW	MLK	ME	HPG	CEM	STY	MRB	REA
15	-2.5	59	0.22	0.76	94	25	-2	13	6	19	0.34	0.04
17%	35%	52%	48%	10%	50%	48%	31%	13%	73%	13%	61%	48%

Age of Dam: 9 | Dam Weight: 1025 | dMPPA: 101

74 HALFMAN ORACLE FL G437

02-02-2019 | GKH : G437 | A (100%) | #4208370
 BROWN REVELATION P7021 BFCK CHEROKEE CNYN 4912
 BROWN MS VICILA M7799
BROWN ORACLE B112
 BROWN MS P707 Y6648 BECKTON NEBULA P P707
 BROWN MS JULIAN W6579
 BECKTON NEW ERA Y194 BECKTON NEBULA P P707
 BKT LARKEISA T310 JC
HALFMAN FLOWER NE B062
 HALFMAN DESTINY T351 5L DESTINATION 893-6215
 BROWN MS VACATION P6837

Individual Data	
act. BW	54
SC	37.0
Frame	M

HerdBuilder 193 / Top 11% | GridMaster 52 / Top 4%

CED	BW	WW	ADG	DMI	YW	MLK	ME	HPG	CEM	STY	MRB	REA
14	-2.7	71	0.28	1.66	116	21	8	7	7	18	0.61	0.41
22%	31%	11%	9%	76%	9%	80%	96%	95%	58%	20%	11%	3%

Age of Dam: 5 | Dam Weight: ET | dMPPA: 91



67 Beckton Accent G822 L4

05-22-2019 | BSF : G822 | A (100%) | #4171510
 BECKTON ACCENT W180 C2 BECKTON CODY K1 P014
 BECKTON CHRISTY R046 CQ
BECKTON ACCENT B740 W3
 BECKTON LANA Y033 W BECKTON WARRIOR W534 N4
 BECKTON LANA W370 E
 BECKTON LIKABLE Y124 L3 BECKTON LIKABLE U130 L2
 BKT PINE MARIE S802 LO
BECKTON BELGA C706 L
 BECKTON EMCEE W526 J2
 BECKTON BELGA W389 D

Individual Data	
act. BW	71
SC	35.0
Frame	M

HerdBuilder 194 / Top 10% | GridMaster 49 / Top 32%

CED	BW	WW	ADG	DMI	YW	MLK	ME	HPG	CEM	STY	MRB	REA
22	-6.5	59	0.21	0.94	92	29	0	10	10	16	0.40	0.10
1%	1%	55%	53%	17%	54%	14%	47%	70%	4%	44%	46%	35%

Age of Dam: 4 | Dam Weight: 1115 | dMPPA: 104

69 Beckton Accent G477 J5

03-29-2019 | BKT : G477 | A (100%) | #4171142
 BECKTON ACCENT W180 C2 BECKTON CODY K1 P014
 BECKTON CHRISTY R046 CQ
BECKTON ACCENT B740 W3
 BECKTON LANA Y033 W BECKTON WARRIOR W534 N4
 BECKTON LANA W370 E
 BECKTON JULIAN C226 E7 BECKTON JULIAN A479 L6
 BECKTON MINERVA A365 E
BECKTON MINOLA E656 J
 BECKTON HERITAGE A767 C3
 BECKTON MINOLA A590 H

Individual Data	
act. BW	53
SC	34.5
Frame	M

HerdBuilder 167 / Top 46% | GridMaster 50 / Top 17%

CED	BW	WW	ADG	DMI	YW	MLK	ME	HPG	CEM	STY	MRB	REA
17	-4.3	61	0.23	1.13	98	29	1	10	8	14	0.50	0.18
5%	10%	43%	38%	28%	40%	13%	49%	67%	32%	73%	26%	21%

Age of Dam: 2 | Dam Weight: 815 | dMPPA: 106

G477 predicts to improve feed conversion with well above average rank for ADG and well below average rank for DMI. This calving ease specialist documents a profitable growth curve with ratios of 93 Birth, 116 weaning and 109 yearling.

76 HALFMANN BOURNE LA G473
 02-09-2019 | CFH: G473 | A (100%) | #4127480
 5L ADVANTAGE 3267-221Y | BUF CRK THE RIGHT KIND U199
 5L ADINA 195-3267

5L BOURNE 117-48A
 5L ROXIE 854-117 | 5L SIGNATURE 5615
 XXX ROXIE 854 MR

MUSHRUSH LUNESTAA007 | MUSHRUSH LUNESTAMD Y097
 MUSHRUSH CANDICE JL X212

BECKTON LANA C240 L
 BECKTON LANAA651 L | BECKTON LANCER T371 H4
 BECKTON LANA T556 CQ

Individual Data	
act. BW	79
SC	36.0
Frame	M

HerdBuilder 160 / Top 59% | GridMaster 48 / Top 38%

CED	BW	WW	ADG	DMI	YW	MLK	ME	HPG	CEM	STY	MRB	REA
15	-3.9	64	0.19	1.23	94	25	-6	13	5	14	0.59	-0.07
21%	14%	31%	71%	35%	50%	46%	14%	16%	86%	72%	13%	74%

Age of Dam: 4 | Dam Weight: 1085 | dMPPA: 99

We love the shape and thickness that comes as standard equipment on the Bourne sons. G473 was one of the higher IMF bulls in the entire offering with a 110 IMF ratio.

77 HALFMANN BOURNE CH G517
 02-12-2019 | CTH: G517 | A (100%) | #4127662
 5L ADVANTAGE 3267-221Y | BUF CRK THE RIGHT KIND U199
 5L ADINA 195-3267

5L BOURNE 117-48A
 5L ROXIE 854-117 | 5L SIGNATURE 5615
 XXX ROXIE 854 MR

BROWN SYNERGY X7838 | BECKTON NEBULA P P707
 CBAR BROWN ABIGRACE T714

HALFMANN CHIEF SY A800
 HALFMANN CHIEF W424 | OLC CHATEAU L416
 HLFMN B958-B251

Individual Data	
act. BW	80
SC	40.0
Frame	M+

HerdBuilder 180 / Top 25% | GridMaster 48 / Top 48%

CED	BW	WW	ADG	DMI	YW	MLK	ME	HPG	CEM	STY	MRB	REA
14	-4.1	68	0.21	1.56	101	29	-1	13	7	16	0.45	-0.03
22%	12%	19%	55%	68%	33%	11%	36%	16%	47%	40%	35%	65%

Age of Dam: 6 | Dam Weight: 1265 | dMPPA: 110

This big loined Bourne son earned ratios of 114 WW, 103 YW and 111 REA. His dam may be our highest producing Synergy daughter, passing her 6-year Stayability threshold with an impressive 110 MPPA.

78 HALFMANN ACCENT RO G515
 02-12-2019 | GKH: G515 | A (100%) | #4127360
 BECKTON ACCENT Y312 N3 | BECKTON ACCENT U777 C2
 BKT LARKEISA S055 NB

BECKTON ACCENT C216 D4
 BECKTON BELGA R716 DM | BECKTON DOMINOR ZC M919
 BECKTON BELGA K285 JL

BECKTON ACCENT Y260 L3 | BECKTON ACCENT W180 C2
 BECKTON LANA W463 L

HALFMANN ROSE AC E785
 HALFMANN ROSE SY B061 | BROWN SYNERGY X7838
 BECKTON ROSE R114 LN

Individual Data	
act. BW	65
SC	36.0
Frame	

HerdBuilder 186 / Top 17% | GridMaster 48 / Top 52%

CED	BW	WW	ADG	DMI	YW	MLK	ME	HPG	CEM	STY	MRB	REA
17	-5.5	49	0.19	0.86	80	26	-5	11	8	17	0.61	-0.37
3%	3%	86%	69%	14%	81%	36%	17%	45%	32%	32%	11%	99%

Age of Dam: 2 | Dam Weight: 952 | dMPPA: 100

80 Beckton Accent G600 C3
 04-07-2019 | BKT: G600 | A (100%) | #4170316
 BECKTON CODY K1 P014 | BECKTON CODY KH M390
 BECKTON ROSE M126 WR

BECKTON ACCENT W180 C2
 BECKTON CHRISTY R046 CQ | BECKTON CHEROKEE N N479
 BECKTON CHRISTY N740 HR

BECKTON CLIFFTOP W692 E3 | BKT CLIFFTOP TP R288
 BECKTON LYDIA S274 EP

BECKTON KIT Z554 C
 BECKTON KIT S271 JL | BECKTON JULIAN G1 J526
 BECKTON KIT L399 HR

Individual Data	
act. BW	51
SC	34.5
Frame	M

HerdBuilder 193 / Top 11% | GridMaster 43 / Top 99%

CED	BW	WW	ADG	DMI	YW	MLK	ME	HPG	CEM	STY	MRB	REA
22	-8.2	40	0.1	0.95	56	27	-5	9	10	19	0.33	-0.24
1%	1%	97%	99%	18%	98%	25%	16%	83%	6%	11%	64%	96%

Age of Dam: 7 | Dam Weight: 1070 | dMPPA: 100

Here's a sleep all night calving ease son of Accent W180 that also predicts profit through reducing your feed bill. Note his best 18% rank for low dry matter intake (DMI) and best 16% rank for mature cow maintenance energy requirement.

82 BSF Hughes G558 H4
 04-03-2019 | BSF: G558 | B (99.90%) | #4171852
 BECKTON HUGHES C463 N2 | BIEBER H HUGHES W109
 BECKTON LAKME T689 NX

BECKTON HUGHES E261 S3
 BECKTON LANA C073 S | BECKTON SCAMP A627 J4
 BECKTON LANAA083 A

BECKTON HUGHES C463 N2 | BIEBER H HUGHES W109
 BECKTON LAKME T689 NX

BSF HUSTELLE E045 H
 BSF HUSTELLE C233 J | BECKTON JULIAN A565 J4
 BSF HUSTELLE A756 E

Individual Data	
act. BW	69
SC	33.0
Frame	M-

HerdBuilder 170 / Top 40% | GridMaster 47 / Top 69%

CED	BW	WW	ADG	DMI	YW	MLK	ME	HPG	CEM	STY	MRB	REA
13	-3.7	66	0.18	1.22	95	27	-4	13	6	16	0.36	-0.08
38%	16%	23%	78%	34%	49%	23%	19%	21%	67%	44%	57%	77%

Age of Dam: 2 | Dam Weight: 800 | dMPPA: 107

Lot 82 is one of several bulls that are out of first calf heifers. G558's dam is off to a great start in our program, weaning her first calf at a 117 WW ratio.

79 HALFMANN ACCENT MI G424
 01-22-2019 | CTH: G424 | A (100%) | #4127638
 BECKTON ACCENT U777 C2 | BECKTON CODY K1 P014
 BECKTON SUSAN R022 CQ

BECKTON ACCENT Y312 N3
 BKT LARKEISA S055 NB | BECKTON NEBULA P P707
 BECKTON LARKEISA P688 C

BECKTON EPIC R522 K | BECKTON EPIC K F075
 BKT SUFFEINA A828 DM

HALFMANN MAIATA EP E813
 HALFMANN MAIATA NB B047 | BECKTON NEBULA P P707
 BECKTON MAIATA U489 HT

Individual Data	
act. BW	70
SC	39.0
Frame	

HerdBuilder 159 / Top 60% | GridMaster 46 / Top 74%

CED	BW	WW	ADG	DMI	YW	MLK	ME	HPG	CEM	STY	MRB	REA
16	-3.8	59	0.18	1.25	88	25	-7	16	7	13	0.54	-0.35
11%	15%	53%	74%	37%	64%	40%	10%	2%	47%	78%	19%	99%

Age of Dam: 2 | Dam Weight: 880 | dMPPA: 105

81 BSF Dominor G770 N10
 04-05-2019 | BSF: G770 | B (99.90%) | #4171774
 BECKTON DOMINOR C052 E8 | BECKTON DOMINOR A378 W7
 BECKTON SCARLETT A406 E

BECKTON DOMINOR E693 D9
 BECKTON CHRISTY C149 D | BECKTON DOMINOR A378 W7
 BECKTON CHRISTY A234 N

BECKTON NEW ERA Y194 | BECKTON NEBULA P P707
 BKT LARKEISA T310 JC

BSF LOKETTA E324 N
 BSF LOKETTAA119 N | BECKTON NEBULA Y002 C5
 BSF LOKETTA Y361 A

Individual Data	
act. BW	66
SC	32.0
Frame	M-

HerdBuilder 187 / Top 16% | GridMaster 49 / Top 25%

CED	BW	WW	ADG	DMI	YW	MLK	ME	HPG	CEM	STY	MRB	REA
17	-3.9	55	0.23	0.94	92	28	-2	10	7	17	0.47	-0.07
3%	14%	70%	38%	17%	57%	20%	28%	60%	40%	37%	31%	74%

Age of Dam: 2 | Dam Weight: 790 | dMPPA:

83 Beckton Epic G817 N7
 05-17-2019 | BKT: G817 | A (100%) | #4170504
 BECKTON EPIC X464 L5 | BECKTON EPIC K6 S569
 BECKTON LANA M393 LN

BECKTON EPIC B310 J6
 BECKTON MINERVA Y116 J | BECKTON JULIAN W743 H5
 BECKTON MINERVA W081 N

BECKTON NEBULA P P707 | BECKTON NEBULA M045
 BECKTON LANAM809 EP

BECKTON LANA B357 N
 BECKTON LANA X234 E | BECKTON EPIC K6 S569
 BECKTON LANA R334 LN

Individual Data	
act. BW	79
SC	34.0
Frame	M-

HerdBuilder 184 / Top 19% | GridMaster 48 / Top 45%

CED	BW	WW	ADG	DMI	YW	MLK	ME	HPG	CEM	STY	MRB	REA
15	-3.0	62	0.22	1.25	97	27	-2	11	8	17	0.43	-0.22
16%	26%	41%	45%	37%	43%	27%	30%	47%	38%	31%	41%	95%

Age of Dam: 5 | Dam Weight: 1020 | dMPPA: 94



John Stipes
 Outside Sales Representative
 214-435-6051
 john.stipes@animalhealthinternational.com



84 Beckton Epic G205 N7

03-15-2019 | BKT : G205 | A (100%) | #4170324

BECKTON EPIC X464 L5 BECKTON EPIC K6 S569
BECKTON LANA M393 LN

BECKTON EPIC B310 J6
BECKTON MINERVA Y116 J BECKTON JULIAN W743 H5
BECKTON MINERVA W081 N

BECKTON NEBULA T269 E2 BECKTON NEBULA M045
BECKTON RUTH M967 EP

BECKTON CHRISTY Z279 N
BECKTON CHRISTY T749 HT BECKTON HERITAGE N013
BECKTON CHRISTY N542 JC

Individual Data	
act. BW	75
SC	34.0
Frame	M

HerdBuilder 159 / Top 60% | GridMaster 43 / Top 99%

CED	BW	WW	ADG	DMI	YW	MLK	ME	HPG	CEM	STY	MRB	REA
13	-3.5	48	0.08	0.87	61	27	-1	12	6	17	0.30	-0.32
35%	19%	88%	99%	14%	97%	24%	37%	30%	69%	31%	72%	99%

Age of Dam: 7 | Dam Weight: 1280 | dMPPA: 96

86 HALFMANNTENX RN G402

01-16-2019 | CFH : G402 | A (100%) | #4127434

REDHILL TEN X 104U 190A AAR TEN X 7008 S A
RED HILL B571 BARMAID 104U

RHF-RHR 190A TENX 49D
REDHILL 151Y AMBER 134B REDHILL U199 LANCER 151Y
RHF-CCCH 4X AMBER 46Z

BECKTON CLIFFTOP W692 E3 BKT CLIFFTOP TP R288
BECKTON LYDIA S274 EP

HALFMANN ROBIN CT E814
HALFMANN ROBIN SY B056 BROWN SYNERGY X7838
HALFMANN ROBIN WR Y595

Individual Data	
act. BW	69
SC	37.0
Frame	M+

HerdBuilder 143 / Top 81% | GridMaster 48 / Top 40%

CED	BW	WW	ADG	DMI	YW	MLK	ME	HPG	CEM	STY	MRB	REA
13	-3.2	56	0.23	1.29	94	29	0	8	8	13	0.46	-0.15
35%	23%	64%	36%	41%	51%	13%	45%	90%	25%	82%	33%	88%

Age of Dam: 2 | Dam Weight: 958 | dMPPA: 102

87 HALFMANNTORACLE SC G525

02-12-2019 | CFH : G525 | A (100%) | #4127526

BROWN REVELATION P7021 BFCK CHEROKEE CNYN 4912
BROWN MS VICILA M7799

BROWN ORACLE B112
BROWN MS P707 Y6648 BECKTON NEBULA P P707
BROWN MS JULIAN W6579

BECKTON HERITAGE X403 L3 BECKTON HERITAGE T270 J2
BECKTON INDIGO H150 LN

BECKTON SCARLETT C325 H
BECKTON SCARLETT R808 NB BECKTON NEBULA M045
ANDRAS SCARLETT 2029

Individual Data	
act. BW	83
SC	39.0
Frame	M+

HerdBuilder 187 / Top 16% | GridMaster 51 / Top 7%

CED	BW	WW	ADG	DMI	YW	MLK	ME	HPG	CEM	STY	MRB	REA
14	-2.8	74	0.26	1.41	116	24	-3	8	6	17	0.51	0.28
31%	29%	6%	17%	52%	9%	54%	26%	90%	71%	31%	24%	9%

Age of Dam: 4 | Dam Weight: 1120 | dMPPA: 109

Better study this catalog till the very end. Here we are almost 3/4 of the way through the bulls and we find performance ratios of 118 WW, 115 YW, 108 ADG and 110 REA. Out of a powerhouse 109 MPPA dam.

85 HALFMANNTENX RB G423

01-22-2019 | GKH : G423 | A (100%) | #4127288

REDHILL TEN X 104U 190A AAR TEN X 7008 S A
RED HILL B571 BARMAID 104U

RHF-RHR 190A TENX 49D
REDHILL 151Y AMBER 134B REDHILL U199 LANCER 151Y
RHF-CCCH 4X AMBER 46Z

BECKTON ACCENT W180 C2 BECKTON CODY K1 P014
BECKTON CHRISTY R046 CQ

HALFMANN REBALAS AC E774
HALFMANN REBALAS NC B008 LSF NIGHT CALVER 9921W
HALFMANN REBALAS IM Z687

Individual Data	
act. BW	68
SC	39.0
Frame	M+

HerdBuilder 184 / Top 19% | GridMaster 50 / Top 13%

CED	BW	WW	ADG	DMI	YW	MLK	ME	HPG	CEM	STY	MRB	REA
15	-3.7	67	0.25	1.43	106	28	1	13	8	16	0.59	0.11
19%	16%	23%	26%	54%	23%	15%	51%	16%	32%	48%	13%	33%

Age of Dam: 2 | Dam Weight: 904 | dMPPA: 105

These TenX 49D sons are going to represent out-cross pedigrees on most of the sire lines that have come from this sale in the past several sales. Lot 85's dam is a rising star in our program earning a 105 MPPA after her first calf.



88 HALFMANNTORACLE SI G447

02-06-2019 | CFH : G447 | A (100%) | #4127462

BROWN REVELATION P7021 BFCK CHEROKEE CNYN 4912
BROWN MS VICILA M7799

BROWN ORACLE B112
BROWN MS P707 Y6648 BECKTON NEBULA P P707
BROWN MS JULIAN W6579

BROWN SYNERGY X7838 BECKTON NEBULA P P707
C-BAR & BROWN ABIGRACE T7

HALFMANN SIERRA SY A857
HALFMANN SIERRA NB X467 BECKTON NEBULA P P707
HALFMANN SIERRA U330

Individual Data	
act. BW	94
SC	36.0
Frame	M+

HerdBuilder 194 / Top 10% | GridMaster 51 / Top 6%

CED	BW	WW	ADG	DMI	YW	MLK	ME	HPG	CEM	STY	MRB	REA
14	-2.2	69	0.26	1.39	111	22	4	7	8	18	0.57	0.21
32%	41%	16%	18%	50%	15%	74%	75%	96%	33%	19%	15%	16%

Age of Dam: 6 | Dam Weight: 1490 | dMPPA: 96

89 HALFMANNTOPGUN IN G457

02-07-2019 | GKH : G457 | A (100%) | #4127320

5L ADVANTAGE 3267-221Y BUF CRK THE RIGHT KIND U199
5L ADINA 195-3267

5L TOPGUN 560-65B
5L BLACK ADINA 525-560 TC STOCKMAN 365
5L ADINA 293-525

BECKTON JULIAN W743 H5 BECKTON JULIAN G5 S107
BECKTON KIT L399 HR

HALFMANN INDIGO JL A869
BECKTON INDIGO R567 WA BECKTON WARHAWK N560
BECKTON INDIGO N754 HR

Individual Data	
act. BW	64
SC	40.0
Frame	M

HerdBuilder 165 / Top 50% | GridMaster 49 / Top 28%

CED	BW	WW	ADG	DMI	YW	MLK	ME	HPG	CEM	STY	MRB	REA
21	-7.4	46	0.21	0.83	79	17	-6	16	9	12	0.57	-0.09
1%	1%	91%	56%	13%	81%	97%	12%	2%	15%	89%	15%	78%

Age of Dam: 6 | Dam Weight: | dMPPA: 95

91 HALFMANNTOPGUN AK G497

02-11-2019 | GKH : G497 | A (100%) | #4127348

5L ADVANTAGE 3267-221Y BUF CRK THE RIGHT KIND U199
5L ADINA 195-3267

5L TOPGUN 560-65B
5L BLACK ADINA 525-560 TC STOCKMAN 365
5L ADINA 293-525

BECKTON NEBULA P P707 BECKTON NEBULA M045
BECKTON LANA M809 EP

HALFMANN ANKATA NB C263
HALFMANN ANKATA PK Z727 MESSMER PACKER S008
HALFMANN ANKATA L607

Individual Data	
act. BW	73
SC	35.0
Frame	M

HerdBuilder 183 / Top 21% | GridMaster 50 / Top 18%

CED	BW	WW	ADG	DMI	YW	MLK	ME	HPG	CEM	STY	MRB	REA
17	-5.2	56	0.25	1.32	96	21	-6	14	9	15	0.55	0.13
5%	4%	64%	26%	44%	46%	84%	11%	9%	11%	65%	18%	29%

Age of Dam: 4 | Dam Weight: 1215 | dMPPA: 103

93 Beckton Scamp G853 N5

06-06-2019 | BSF : G853 | A (100%) | #4171310

BECKTON SCAMP X494 E3 BECKTON SCAMP T A825
BECKTON LANA S074 EP

BECKTON SCAMP A627 J4
BECKTON SERENA R023 JC BECKTON JUSTICE CC N265
BECKTON SERENA N469 JC

BECKTON NEBULA T398 V3 BECKTON NEBULA L P093
BECKTON MINERVA J615 VG

BECKTON LARKABA Y156 N
BECKTON LARKABA U274 JL BECKTON JULIAN G3 P608
BECKTON LARKABA N708 HR

Individual Data	
act. BW	89
SC	35.5
Frame	M

HerdBuilder 189 / Top 14% | GridMaster 47 / Top 60%

CED	BW	WW	ADG	DMI	YW	MLK	ME	HPG	CEM	STY	MRB	REA
19	-5.7	52	0.2	0.77	84	30	-10	14	9	16	0.29	-0.26
1%	3%	78%	64%	11%	74%	8%	4%	11%	13%	47%	74%	97%

Age of Dam: 8 | Dam Weight: 1280 | dMPPA: 104

90 HALFMANNTOPGUN SM G403

01-17-2019 | GKH : G403 | A (100%) | #4127268

5L ADVANTAGE 3267-221Y BUF CRK THE RIGHT KIND U199
5L ADINA 195-3267

5L TOPGUN 560-65B
5L BLACK ADINA 525-560 TC STOCKMAN 365
5L ADINA 293-525

SANDMAN RCN SANDHILL CHF 416 PANHANDLE POLLY 4119

HALFMANN SANDMAN SM E727
HALFMANN SANDMAN DY Y620 LELAND DESTINY 6215-9019W
HALFMANN SANDMAN U306

Individual Data	
act. BW	69
SC	39.0
Frame	M

HerdBuilder 156 / Top 66% | GridMaster 48 / Top 39%

CED	BW	WW	ADG	DMI	YW	MLK	ME	HPG	CEM	STY	MRB	REA
16	-3.8	46	0.2	0.90	79	15	-2	13	9	13	0.47	0.00
9%	15%	91%	59%	15%	81%	99%	29%	16%	19%	84%	31%	58%

Age of Dam: 2 | Dam Weight: 1305 | dMPPA: 92

92 HALFMANNTDEFENDER SU G409

01-19-2019 | CFH : G409 | A (100%) | #4127440

5L ADVOCATE 817-14W 5L SIGNATURE 5615
5L MARTA 345-817

5L DEFENDER 560-30Z
5L BLACK ADINA 525-560 TC STOCKMAN 365
5L ADINA 293-525

BECKTON EPIC B835 C8 BECKTON EPIC Z061 D7
BECKTON KIT Z554 C

HALFMANN SUSAN EP E900
BECKTON SUSAN B793 E BECKTON EPIC X816 C6
BECKTON SUSAN X470 E

Individual Data	
act. BW	59
SC	37.0
Frame	M+

HerdBuilder 121 / Top 95% | GridMaster 49 / Top 21%

CED	BW	WW	ADG	DMI	YW	MLK	ME	HPG	CEM	STY	MRB	REA
17	-5.7	54	0.22	1.46	89	24	-4	8	5	9	0.68	0.10
5%	3%	72%	46%	58%	61%	50%	19%	94%	86%	97%	5%	35%

Age of Dam: 2 | Dam Weight: 1040 | dMPPA: 100

10 YEARS **MULTIMIN 90** **Don't Compromise Herd Health**
— Inject MULTIMIN® 90

MULTIMIN® 90 is an injectable supplement that quickly boosts essential trace mineral levels with no antagonist interference in calves, heifers, cows, and bulls.

Rx REQUIRED

Jill Ginn (West TX & NM)
(806) 570-6185 • jill@multiminusa.com

www.multiminusa.com • 866.269.6467 • 970.372.2302
Copyright © 2020. Multimin USA. All Rights Reserved.



Lot 94

94 BSF Accent G366 A5
 03-24-2019 | BSF: G366 | B (99.90%) | #4171764
 BECKTON ACCENT B740 W3 BECKTON ACCENT W180 C2
 BECKTON LANA Y033 W
BECKTON ACCENT E492 N4
 BKT PINE MARIE Z177 N BECKTON NEBULA X096 N4
 BKT PINE MARIE X540 H
 BECKTON ACCENT A485 C3 BECKTON ACCENT U777 C2
 BECKTON TAMARA R175 CQ
BSF CODETTE E713 A
 BSF CODETTE A012 N BECKTON NEBULA W486 D3
 BSF CODETTE U860 CD

Individual Data	
act. BW	56
SC	39.5
Frame	S+

HerdBuilder 177 / Top 30% | GridMaster 43 / Top 98%

CED	BW	WW	ADG	DMI	YW	MLK	ME	HPG	CEM	STY	MRB	REA
19	-5.9	44	0.1	0.94	60	27	-3	12	9	17	0.36	-0.22
1%	2%	93%	99%	17%	97%	25%	24%	26%	17%	34%	57%	95%

Age of Dam: 2 | Dam Weight: 730 | dMPPA: 96

98 HALFMAN DEFENDER SI G459
 02-07-2019 | CFH: G459 | A (100%) | #4127466
 5L ADVOCATE 817-14W 5L SIGNATURE 5615
 5L MARTA 345-817
5L DEFENDER 560-30Z
 5L BLACK ADINA 525-560 TC STOCKMAN 365
 5L ADINA 293-525
 HALFMAN GENESIS A831 BECKTON NEW ERA Y194
 BECKTON EOLA U247 JL
HALFMANN SIERRA GN D471
 HALFMAN SIERRA IM B010 MUSHRUSH IMPRESSIVE CA
 HALFMAN SIERRA MS Z743

Individual Data	
act. BW	76
SC	39.0
Frame	M

HerdBuilder 136 / Top 87% | GridMaster 48 / Top 48%

CED	BW	WW	ADG	DMI	YW	MLK	ME	HPG	CEM	STY	MRB	REA
17	-4.9	54	0.21	1.46	88	24	-3	9	5	12	0.49	-0.06
4%	6%	71%	55%	58%	65%	55%	27%	79%	83%	89%	28%	72%

Age of Dam: 3 | Dam Weight: 1185 | dMPPA: 101

99 HALFMAN DEFENDER CO G405
 01-18-2019 | GKH: G405 | A (100%) | #4127272
 5L ADVOCATE 817-14W 5L SIGNATURE 5615
 5L MARTA 345-817
5L DEFENDER 560-30Z
 5L BLACK ADINA 525-560 TC STOCKMAN 365
 5L ADINA 293-525
 BECKTON JULIAN A086 C6 BECKTON JULIAN X465 J5
 BKT PINE MARIE W102 C
HALFMANN COCA JL E703
 HALFMAN COCA NB C370 HALFMAN NEBULA MT Z725
 BECKTON COCA R675 NB

Individual Data	
act. BW	63
SC	39.0
Frame	M

HerdBuilder 137 / Top 86% | GridMaster 49 / Top 31%

CED	BW	WW	ADG	DMI	YW	MLK	ME	HPG	CEM	STY	MRB	REA
17	-5.9	52	0.21	1.38	86	23	-7	11	5	11	0.63	0.03
4%	2%	77%	56%	50%	70%	61%	9%	51%	86%	92%	9%	51%

Age of Dam: 2 | Dam Weight: 876 | dMPPA: 102

95 WCRA Accent G144
 03-24-2019 | WCRA: G144 | A (100%) | #4149826
 BECKTON CODY K1 P014 BECKTON CODY KH M390
 BECKTON ROSE M126 WR
BECKTON ACCENT W180 C2
 BECKTON CHRISTY R046 CQ BECKTON CHEROKEE N N479
 BECKTON CHRISTY N740 HR
 BECKTON NEW ERA Y194 BECKTON NEBULA P P707
 BKT LARKEISA T310 JC
BECKTON PINE MARIE E378 N
 BECKTON PINE MARIE B359 S BECKTON SCAMP X494 E3
 BKT PINE MARIE X204 J

Individual Data	
act. BW	55
SC	35.0
Frame	M-

HerdBuilder 232 / Top 1% | GridMaster 47 / Top 67%

CED	BW	WW	ADG	DMI	YW	MLK	ME	HPG	CEM	STY	MRB	REA
21	-6.7	51	0.2	0.96	82	25	-4	11	9	22	0.33	-0.18
1%	1%	81%	66%	18%	76%	48%	22%	51%	9%	1%	64%	91%

Age of Dam: 2 | Dam Weight: 788 | dMPPA: 93

96 BSF Clifftop G549 A6
 04-03-2019 | BSF: G549 | B (99.90%) | #4171522
 BECKTON CLIFFTOP Y012 C4 BECKTON CLIFFTOP W692 E3
 BECKTON LANA W240 C
BECKTON CLIFFTOP C572 N5
 BKT PINE MARIE U454 NB BECKTON NEBULA P P707
 BKT PINE MARIE N582 WR
 BECKTON ACCENT W180 C2 BECKTON CODY K1 P014
 BECKTON CHRISTY R046 CQ
BSF HELENA C180 A
 BSF HELENA X529 N BECKTON NEBULA T398 V3
 BSF HELENA T014 JD

Individual Data	
act. BW	80
SC	33.5
Frame	M-

HerdBuilder 197 / Top 7% | GridMaster 46 / Top 80%

CED	BW	WW	ADG	DMI	YW	MLK	ME	HPG	CEM	STY	MRB	REA
15	-3.2	46	0.17	0.84	73	22	-4	10	7	20	0.37	-0.29
18%	23%	92%	81%	13%	89%	70%	19%	65%	58%	5%	54%	98%

Age of Dam: 4 | Dam Weight: 1105 | dMPPA: 85

100 HALFMAN ACCENT SI G401
 01-16-2019 | CFH: G401 | A (100%) | #4127432
 BECKTON ACCENT U777 C2 BECKTON CODY K1 P014
 BECKTON SUSAN R022 CQ
BECKTON ACCENT Y312 N3
 BKT LARKEISA S055 NB BECKTON NEBULA P P707
 BECKTON LARKEISA P688 C
 BUF CRK THE RIGHT KIND U199 BUF CRK LANCER R017
 BUF CRK SHOSHONE R353
HALFMANN SIERRA RK E722
 HALFMAN SIERRA NB X467 BECKTON NEBULA P P707
 HALFMAN SIERRA U330

Individual Data	
act. BW	62
SC	38.0
Frame	M+

HerdBuilder 150 / Top 74% | GridMaster 47 / Top 62%

CED	BW	WW	ADG	DMI	YW	MLK	ME	HPG	CEM	STY	MRB	REA
16	-5.3	56	0.21	1.38	91	25	-6	14	7	12	0.48	-0.21
8%	4%	63%	52%	49%	59%	46%	14%	10%	51%	85%	29%	94%

Age of Dam: 2 | Dam Weight: 826 | dMPPA: 100

101 HALFMAN ACCENT SI G441
 02-05-2019 | CFH: G441 | A (100%) | #4127456
 BECKTON ACCENT Y312 N3 BECKTON ACCENT U777 C2
 BKT LARKEISA S055 NB
BECKTON ACCENT C216 D4
 BECKTON BELGA R716 DM BECKTON DOMINOR ZC M919
 BECKTON BELGA K285 JL
 BECKTON ACCENT Y312 N3 BECKTON ACCENT U777 C2
 BKT LARKEISA S055 NB
HALFMANN SIERRA AC E743
 HALFMAN SIERRA NB A830 HALFMAN NEBULA Q Y597
 HALFMAN SIERRA NB Y623

Individual Data	
act. BW	58
SC	37.0
Frame	M

HerdBuilder 150 / Top 73% | GridMaster 47 / Top 58%

CED	BW	WW	ADG	DMI	YW	MLK	ME	HPG	CEM	STY	MRB	REA
17	-6.0	48	0.19	0.98	78	24	-5	13	7	13	0.61	-0.27
5%	2%	89%	69%	19%	83%	51%	16%	19%	47%	84%	11%	97%

Age of Dam: 2 | Dam Weight: 908 | dMPPA: 96



Lot 97

97 Beckton Hughes G085 L4
 03-05-2019 | BKT: G085 | A (100%) | #4171042
 BECKTON HUGHES C463 N2 BIEBER H HUGHES W109
 BECKTON LAKME T689 NX
BECKTON HUGHES E261 S3
 BECKTON LANA C073 S BECKTON SCAMP A627 J4
 BECKTON LANA A083 A
 BECKTON LIKABLE U130 L2 BECKTON LIKABLE S633
 BECKTON KIT S478 LN
BECKTON TAMARA E467 L
 B188 BECKTON NEBULA W486 D3
 BECKTON TAMARA S729 CT

Individual Data	
act. BW	52
SC	31.0
Frame	M-

HerdBuilder 190 / Top 13% | GridMaster 47 / Top 67%

CED	BW	WW	ADG	DMI	YW	MLK	ME	HPG	CEM	STY	MRB	REA
18	-5.4	51	0.16	0.85	77	22	-4	11	10	17	0.41	-0.02
2%	4%	81%	85%	14%	84%	70%	20%	43%	8%	30%	44%	63%

Age of Dam: 2 | Dam Weight: 695 | dMPPA: 95

102 HALFMAN ACCENT RO G585
 03-08-2019 | CFH: G585 | A (100%) | #4127590
 BECKTON ACCENT Y312 N3 BECKTON ACCENT U777 C2
 BKT LARKEISA S055 NB
BECKTON ACCENT C216 D4
 BECKTON BELGA R716 DM BECKTON DOMINOR ZC M919
 BECKTON BELGA K285 JL
 BECKTON ACCENT Y260 L3 BECKTON ACCENT W180 C2
 BECKTON LANA W463 L
HALFMANN ROBIN AC E757
 HALFMAN ROBIN SY A832 BROWN SYNERGY X7838
 HALFMAN ROBIN I551

Individual Data	
act. BW	62
SC	37.0
Frame	M

HerdBuilder 189 / Top 14% | GridMaster 47 / Top 55%

CED	BW	WW	ADG	DMI	YW	MLK	ME	HPG	CEM	STY	MRB	REA
17	-5.3	51	0.19	1.02	82	28	-1	11	8	18	0.65	-0.40
5%	4%	82%	66%	21%	77%	18%	37%	42%	33%	23%	7%	99%

Age of Dam: 2 | Dam Weight: 1075 | dMPPA: 97

103 HALFMAN ACCENT SM G434
 01-30-2019 | CTH: G434 | A (100%) | #4127640
 BECKTON ACCENT U777 C2 BECKTON CODY K1 P014
 BECKTON SUSAN R022 CQ
BECKTON ACCENT Y312 N3
 BKT LARKEISA S055 NB BECKTON NEBULA P P707
 BECKTON LARKEISA P688 C
 SANDMAN RCN SANDHILL CHF 416 PANHANDLE POLLY 4119
HALFMANN SANDMAN MR C256
 BECKTON MARTA U079 NB BECKTON NEBULA EN S347
 BECKTON MARTA S772 LO

Individual Data	
act. BW	58
SC	38.0
Frame	L-

HerdBuilder 157 / Top 64% | GridMaster 46 / Top 76%

CED	BW	WW	ADG	DMI	YW	MLK	ME	HPG	CEM	STY	MRB	REA
19	-6.6	53	0.2	1.29	85	28	2	14	8	13	0.50	-0.19
1%	1%	76%	63%	41%	72%	20%	57%	8%	22%	81%	26%	92%

Age of Dam: 4 | Dam Weight: 1345 | dMPPA: 99

Still Need Heifer Bulls?

...8 Bulls on these pages rank in the best 5% or better for Calving Ease!

104 HALFMAN SYNERGY IN G613

04-08-2019 | GKH: G613 | A (100%) | #4127418

BROWN SYNERGY X7838 BECKTON NEBULA P P707
C-BAR & BROWN ABIGRACE T714

HALFMANN SYNERGY EO B059
BECKTON EOLA U101 NB BECKTON NEBULA EN S347
BECKTON EOLA S011 NB

BECKTON CLIFFTOP W692 E3 BKT CLIFFTOP TP R288
BECKTON LYDIA S274 EP

HALFMANN INDIGO CT A864
BECKTON INDIGO U285 NB BECKTON NEBULA PJ S543
BECKTON INDIGO S095 VA

Individual Data	
act. BW	78
SC	37.0
Frame	M-

HerdBuilder 169 / Top 42% | GridMaster 48 / Top 43%

CED	BW	WW	ADG	DMI	YW	MLK	ME	HPG	CEM	STY	MRB	REA
19	-7.1	47	0.22	1.03	82	29	1	9	11	14	0.61	-0.37
1%	1%	90%	46%	22%	77%	12%	49%	88%	3%	67%	11%	99%

Age of Dam: 6 | Dam Weight: 1110 | dMPPA: 100

105 HALFMAN TAKEOVER RE G617

04-10-2019 | GKH: G617 | A (100%) | #4127422

LSF TAKEOVER 9943W HXC CONQUEST 4405P
LSF WIDELoad R5014 U8061

HALFMANN TAKEOVER SM C214
HALFMANN SANDMN NB Z708 BECKTON NEBULA P P707
HALFMANN SANDMAN M601

HALFMANN SYNERGY MN A883 BROWN SYNERGY X7838
HALFMANN MONAMS X468

HALFMANN REALIN SY 318D
DAMAR Y157 REALINA318 DAMAR PACKTIN 1819
DAMAR REALIN Y157

Individual Data	
act. BW	68
SC	34.0
Frame	M

HerdBuilder 169 / Top 43% | GridMaster 47 / Top 66%

CED	BW	WW	ADG	DMI	YW	MLK	ME	HPG	CEM	STY	MRB	REA
18	-5.8	47	0.19	1.12	77	27	5	12	10	15	0.52	-0.16
3%	2%	89%	73%	27%	84%	25%	85%	36%	7%	58%	22%	89%

Age of Dam: 3 | Dam Weight: 1250 | dMPPA: 105

110 BSF Legend G843 E4

06-02-2019 | BSF: G843 | B (99.90%) | #4171858

BECKTON LEGEND C313 C2 BECKTON LEGEND S670
BECKTON MINOLA W808 C

BECKTON LEGEND E032 E3
BECKTON EMERA C066 E BECKTON EPIC A286 E7
BECKTON EMERA A029 D

BECKTON NEBULA C776 J3 BECKTON EPIC X464 L5
BECKTON SIERRA Y058 J

BSF CLIFFTANA E126 E
BSF CLIFFTANA C120 N BECKTON NEBULA A773 L4
BSF CLIFFTANA A563 L

Individual Data	
act. BW	81
SC	34.0
Frame	M-

HerdBuilder 203 / Top 5% | GridMaster 50 / Top 15%

CED	BW	WW	ADG	DMI	YW	MLK	ME	HPG	CEM	STY	MRB	REA
18	-3.2	68	0.23	0.88	105	28	-2	12	9	17	0.33	0.16
2%	23%	20%	35%	15%	25%	15%	32%	29%	11%	32%	64%	23%

Age of Dam: 2 | Dam Weight: 850 | dMPPA: 104

110 lots into the sale we find this exceptional Legend son that spreads a best 2% Calving Ease to triple-digit growth. He also predicts to improve profitability regardless of your marketing strategy - sporting a Top 5% HerdBuilder and Top 15% GridMaster.

111 HALFMAN ORACLE MI G450

02-06-2019 | GKH: G450 | A (100%) | #4127312

BROWN REVELATION P7021 BFCK CHEROKEE CNYN 4912
BROWN MS VICILA M7799

BROWN ORACLE B112
BROWN MS P707 Y6648 BECKTON NEBULA P P707
BROWN MS JULIAN W6579

HALFMANN NEBULA AL Y593 BECKTON NEBULA P P707
HALFMANN ALEXIS U352

HALFMANN MINERVA NB A793
HALFMANN MINERVA MS Y606 HALFMANN MSN STATEMENT
BIEBER MINERVA 8077

Individual Data	
act. BW	72
SC	39.0
Frame	M+

HerdBuilder 198 / Top 7% | GridMaster 51 / Top 10%

CED	BW	WW	ADG	DMI	YW	MLK	ME	HPG	CEM	STY	MRB	REA
17	-5.6	62	0.26	1.39	103	25	9	7	9	18	0.57	0.23
5%	3%	40%	20%	50%	29%	44%	97%	97%	10%	17%	15%	14%

Age of Dam: 6 | Dam Weight: 1350 | dMPPA: 105

106 Beckton Accent G165 L5

03-12-2019 | BKT: G165 | A (100%) | #4171178

BECKTON ACCENT B740 W3 BECKTON ACCENT W180 C2
BECKTON LANA Y033 W

BECKTON ACCENT E492 N4
BKT PINE MARIE Z177 N BECKTON NEBULA X096 N4
BKT PINE MARIE X540 H

BECKTON LIKABLE Y124 L3 BECKTON LIKABLE U130 L2
BKT PINE MARIE S802 LO

BECKTON TAMARA E881 L
BECKTON TAMARA A428 N BECKTON NEW ERA Y194
BECKTON TAMARA L132 CT

Individual Data	
act. BW	51
SC	39.0
Frame	S+

HerdBuilder 182 / Top 22% | GridMaster 45 / Top 92%

CED	BW	WW	ADG	DMI	YW	MLK	ME	HPG	CEM	STY	MRB	REA
21	-6.6	45	0.14	0.97	68	25	0	10	10	17	0.38	-0.21
1%	1%	93%	92%	19%	93%	45%	47%	62%	5%	34%	51%	94%

Age of Dam: 2 | Dam Weight: 730 | dMPPA: 92

107 BSF Nebula G389 S4

03-25-2019 | BSF: G389 | B (99.90%) | #4171686

BECKTON NEBULA P P707 BECKTON NEBULA M045
BECKTON LANA M809 EP

BECKTON NEBULA B557 J3
BECKTON LARKABA T813 JC BECKTON JUSTICE CH M056
BECKTON LARKABA P645 JL

BECKTON SCAMP A627 J4 BECKTON SCAMP X494 E3
BECKTON SERENAR023 JC

BSF JULESTE D584 S
BSF JULESTE Z478 E BECKTON EPIC U749 D5
BSF JULESTE U662 CD

Individual Data	
act. BW	65
SC	35.0
Frame	M-

HerdBuilder 158 / Top 62% | GridMaster 46 / Top 73%

CED	BW	WW	ADG	DMI	YW	MLK	ME	HPG	CEM	STY	MRB	REA
17	-5.9	42	0.17	0.93	69	27	-5	11	8	14	0.49	-0.27
4%	2%	96%	83%	17%	93%	26%	16%	56%	32%	70%	28%	97%

Age of Dam: 3 | Dam Weight: 875 | dMPPA: 101

112 HALFMAN ORACLE KI G443

02-05-2019 | CFH: G443 | A (100%) | #4127458

BROWN REVELATION P7021 BFCK CHEROKEE CNYN 4912
BROWN MS VICILA M7799

BROWN ORACLE B112
BROWN MS P707 Y6648 BECKTON NEBULA P P707
BROWN MS JULIAN W6579

BECKTON JULIAN G1 J526 BECKTON JULIAN GG B571
BECKTON ANNIE F743 LN

BECKTON KIT S271 JL
BECKTON KIT L399 HR BECKTON HERALD F FA20
BECKTON KIT F468 JL

Individual Data	
act. BW	52
SC	37.0
Frame	M

HerdBuilder 199 / Top 6% | GridMaster 50 / Top 15%

CED	BW	WW	ADG	DMI	YW	MLK	ME	HPG	CEM	STY	MRB	REA
21	-7.9	59	0.2	0.99	91	23	4	9	10	17	0.55	0.46
1%	1%	55%	61%	20%	58%	64%	75%	83%	7%	34%	18%	2%

Age of Dam: 13 | Dam Weight: 1220 | dMPPA: 102

113 HALFMAN ORACLE LA G523

02-12-2019 | GKH: G523 | A (100%) | #4127368

BROWN REVELATION P7021 BFCK CHEROKEE CNYN 4912
BROWN MS VICILA M7799

BROWN ORACLE B112
BROWN MS P707 Y6648 BECKTON NEBULA P P707
BROWN MS JULIAN W6579

HALFMANN NEBULA MT Z725 BECKTON NEBULA P P707
HALFMANN MATTIE T336

HALFMANN LANA NB C338
BECKTON LANA S341 JT BECKTON JET L P491
BECKTON LANA P656 JL

Individual Data	
act. BW	80
SC	39.0
Frame	M

HerdBuilder 190 / Top 13% | GridMaster 52 / Top 2%

CED	BW	WW	ADG	DMI	YW	MLK	ME	HPG	CEM	STY	MRB	REA
14	-2.0	74	0.29	1.60	121	23	9	8	7	17	0.61	0.28
32%	45%	7%	6%	71%	5%	60%	97%	94%	44%	28%	11%	9%

Age of Dam: 4 | Dam Weight: 1350 | dMPPA: 104

108 BSF Likable G465 L4

03-29-2019 | BSF: G465 | B (99.90%) | #4171632

BECKTON LIKABLE U130 L2 BECKTON LIKABLE S633
BECKTON KIT S478 LN

BECKTON LIKABLE C229 R3
BECKTON TAMARA X447 J BECKTON ROMAN J S158
BECKTON TAMARA R834 JC

BECKTON LOKI X833 H4 BECKTON LOKI CL S284
BECKTON VERNICE T447 HT

BSF LANETTE D532 L
BSF LANETTE U463 CQ BECKTON CHEROKEE N N479
BSF LANETTE R748 LN

Individual Data	
act. BW	64
SC	39.0
Frame	M+

HerdBuilder 167 / Top 46% | GridMaster 46 / Top 74%

CED	BW	WW	ADG	DMI	YW	MLK	ME	HPG	CEM	STY	MRB	REA
16	-3.6	57	0.17	1.12	85	26	0	10	7	16	0.33	0.01
10%	17%	62%	79%	27%	72%	30%	47%	74%	51%	45%	64%	55%

Age of Dam: 3 | Dam Weight: 930 | dMPPA: 101

109 Beckton Cardinal G397 A3

03-25-2019 | BKT: G397 | A (100%) | #4171098

BECKTON CARDINAL B074 N TR DOUBLE EAGLE ZT220
BKT PINE MARIE Z250 N

BECKTON CARDINAL E381 J2
BECKTON LARKABA W868 J BECKTON JULIAN G5 S107
BECKTON LARKABA S663 JE

BECKTON ACCENT C418 L4 BECKTON ACCENT Y260 L3
BECKTON KIT S545 LN

BECKTON ROSE E618 A
BECKTON ROSE C310 J BECKTON JULIAN G3 P608
BECKTON ROSE Z907 A

Individual Data	
act. BW	61
SC	32.5
Frame	M

HerdBuilder 153 / Top 69% | GridMaster 49 / Top 27%

CED	BW	WW	ADG	DMI	YW	MLK	ME	HPG	CEM	STY	MRB	REA
10	-3.5	52	0.19	0.71	83	25	-4	12	0	16	0.51	-0.13
86%	19%	79%	66%	9%	75%	42%	22%	30%	99%	48%	24%	86%

Age of Dam: 2 | Dam Weight: 735 | dMPPA: 98

114 HALFMAN DEFENDER LA G536

02-13-2019 | CFH: G536 | A (100%) | #4127534

5L ADVOCATE 817-14W 5L SIGNATURE 5615
5L MARTA 345-817

5L DEFENDER 560-30Z
5L BLACK ADINA 525-560 TC STOCKMAN 365
5L ADINA 293-525

BECKTON ACCENT U777 C2 BECKTON CODY K1 P014
BECKTON SUSAN R022 CQ

BECKTON LANA Z605 A
BECKTON LANA W314 J BECKTON JET L P491
BECKTON LANA S866 CH

Individual Data	
act. BW	74
SC	38.0
Frame	M+

HerdBuilder 123 / Top 94% | GridMaster 47 / Top 57%

CED	BW	WW	ADG	DMI	YW	MLK	ME	HPG	CEM	STY	MRB	REA
18	-5.5	50	0.19	1.53	80	21	-8	10	5	10	0.55	0.01
3%	3%	85%	69%	65%	80%	81%	8%	63%	82%	96%	18%	55%

Age of Dam: 7 | Dam Weight: 1285 | dMPPA: 98

C&L SERVICES

Sale Services
TORCHING | SHEERING | SALE HELP
972.921.2881

*Serving the cattle industry
for more than 20 years!*



Lot 115

115 HALFMAN SYNERGY BM F291

11-20-2018 | CFH: F291 | A (100%) | #4057996

BECKTON NEBULA P P707
BROWN SYNERGY X7838
 CBAR BROWN ABIGRACE T714 LJC MISSION STATEMENT P27
 BROWN MS ABIGRACE L7730

BECKTON NEBULA M045
 BECKTON LANA M809 EP

BECKTON SCAMP X494 E3
BECKTON BARMAID C773 S
 BECKTON BARMAID X720 H

BECKTON SCAMP T A825
 BECKTON LANA S074 EP

BECKTON HASTEN H S462
 BECKTON BARMAID P864 JC

Individual Data	
act. BW	67
SC	40.0
Frame	M

HerdBuilder 167 / Top 47% | GridMaster 48 / Top 50%

CED	BW	WW	ADG	DMI	YW	MLK	ME	HPG	CEM	STY	MRB	REA
17	-5.3	48	0.2	1.00	81	30	-7	9	11	14	0.50	-0.33
4%	4%	87%	60%	20%	79%	7%	11%	79%	3%	70%	26%	99%

Age of Dam: | Dam Weight: | dMPPA: 94

It wasn't many years ago that a Synergy son that looked like this could start the sale. Synergy remains one of the breed's best sources of proven calving ease, reduced feed intake and low maintenance energy requirement.

120 HALFMAN TAKEOVER RO G565

02-27-2019 | CFH: G565 | A (100%) | #4127566

LSF TAKEOVER 9943W
HALFMAN TAKEOVER SM C214
 HALFMAN SANDMN NB Z708

HXC CONQUEST 4405P
 LSF WIDELOAD R5014 U8061

BECKTON NEBULA P P707
 HALFMAN SANDMAN M601

BECKTON NEBULA AQ Y597
HALFMAN ROSE NB B126
 BECKTON ROSE X770 N

BECKTON NEBULA P F707
 HALFMAN AQUILA U391

BECKTON NEBULA G S237
 BECKTON ROSE S307 LO

Individual Data	
act. BW	72
SC	39.0
Frame	M+

HerdBuilder 168 / Top 45% | GridMaster 48 / Top 39%

CED	BW	WW	ADG	DMI	YW	MLK	ME	HPG	CEM	STY	MRB	REA
19	-6.6	53	0.22	1.28	89	29	6	12	9	14	0.59	-0.14
1%	1%	76%	43%	40%	63%	10%	87%	23%	13%	73%	13%	87%

Age of Dam: 5 | Dam Weight: 1105 | dMPPA: 110

122 Beckton Accent G772 L3

05-06-2019 | BKT: G772 | A (100%) | #4170326

BECKTON ACCENT U777 C2
BECKTON ACCENT B553 L2
 BECKTON LANA X839 L

BECKTON CODY K1 P014
 BECKTON SUSAN R022 CQ

BECKTON LEGEND S670
 BECKTON LANA S371 DM

BECKTON LIKABLE U120 L2
BECKTON ROSE Z290 L
 BECKTON ROSE U122 NB

BECKTON LIKABLE S633
 BECKTON LANA S718 LN

BECKTON NEBULA PJ S543
 BECKTON ROSE S106 HW

Individual Data	
act. BW	85
SC	35.5
Frame	M-

HerdBuilder 169 / Top 43% | GridMaster 48 / Top 51%

CED	BW	WW	ADG	DMI	YW	MLK	ME	HPG	CEM	STY	MRB	REA
13	-0.7	55	0.18	0.91	84	21	-1	10	4	17	0.45	-0.16
36%	71%	67%	78%	16%	74%	78%	37%	69%	93%	34%	35%	89%

Age of Dam: 7 | Dam Weight: 1340 | dMPPA: 98

124 Beckton Hughes G782 E3

05-08-2019 | BSF: G782 | A (100%) | #4171462

BIEBER H HUGHES W109
BECKTON HUGHES C350 N2
 BECKTON KIT Z049 N

BASIN HOBO 0545
 BASIN ROSE 06T0

BECKTON NEBULA X353 E3
 BECKTON KIT X236 L

BECKTON EPIC X816 C6
BECKTON INDIGO B662 E
 BECKTON INDIGO Y343 N

BECKTON EPIC T330 L5
 BECKTON MONAR198 CQ

BECKTON NEBULA T398 V3
 BECKTON INDIGO H150 LN

Individual Data	
act. BW	75
SC	33.5
Frame	M-

HerdBuilder 170 / Top 42% | GridMaster 43 / Top 98%

CED	BW	WW	ADG	DMI	YW	MLK	ME	HPG	CEM	STY	MRB	REA
16	-4.1	48	0.12	0.97	68	25	1	11	9	17	0.25	-0.30
10%	12%	87%	97%	19%	93%	46%	51%	39%	13%	32%	84%	98%

Age of Dam: 5 | Dam Weight: 1170 | dMPPA: 96

121 HALFMAN TAKEOVER MT G609

04-07-2019 | CTH: G609 | A (100%) | #4127682

LSF TAKEOVER 9943W
HALFMAN TAKEOVER SM C214
 HALFMAN SANDMN NB Z708

HXC CONQUEST 4405P
 LSF WIDELOAD R5014 U8061

BECKTON NEBULA P P707
 HALFMAN SANDMAN M601

BROWN SYNERGY X7838
HALFMAN MARTA SY B097
 BECKTON MARTA U079 NB

BECKTON NEBULA P F707
 C-BAR & BROWN ABIGRACE T7

BECKTON NEBULA EN S347
 BECKTON MARTA S772 LO

Individual Data	
act. BW	86
SC	39.0
Frame	M

HerdBuilder 169 / Top 43% | GridMaster 47 / Top 61%

CED	BW	WW	ADG	DMI	YW	MLK	ME	HPG	CEM	STY	MRB	REA
17	-4.8	49	0.19	1.09	80	31	-4	12	8	15	0.51	-0.22
5%	6%	86%	67%	25%	80%	5%	22%	26%	24%	61%	24%	95%

Age of Dam: 5 | Dam Weight: 998 | dMPPA: 101

123 BKT G849

06-04-2019 | BKT: G849 | 2 (100%) | #4170590

BECKTON EPIC U749 D5
BECKTON EPIC Z674 E6
 BECKTON INDIGO U504 EP

BECKTON EPIC K4 N795
 BECKTON DENISE R308 DM

BECKTON EPIC K6 S569
 BECKTON INDIGO S016 NB

BIEBER H HUGHES W109
BECKTON LANA C332 H
 BECKTON LANA X157 L

BASIN HOBO 0545
 BASIN ROSE 06T0

BECKTON LIKABLE U120 L2
 BECKTON LANA U775 NB

Individual Data	
act. BW	82
SC	33.5
Frame	M-

HerdBuilder 163 / Top 54% | GridMaster 49 / Top 32%

CED	BW	WW	ADG	DMI	YW	MLK	ME	HPG	CEM	STY	MRB	REA
14	-1.7	65	0.24	1.22	104	26	3	9	9	14	0.38	-0.05
27%	51%	27%	31%	34%	28%	36%	73%	84%	12%	67%	51%	70%

Age of Dam: 4 | Dam Weight: 1140 | dMPPA: 103

125 Beckton Warrior G046 W8

02-24-2019 | BKT: G046 | A (100%) | #4171128

BECKTON WARRIOR C695 W6
BECKTON WARRIOR E215 E7
 BECKTON SUFFEINA C124 E

BECKTON WARRIOR Y108 E5
 BECKTON LANA Y033 W

BECKTON WARRIOR Y108 E5
 BECKTON LANA Y033 W

BECKTON WARRIOR Y108 E5
 BECKTON LANA Y033 W

BECKTON EMPEROR A165 W4
 BECKTON SUFFEINA A439 N

BECKTON WARRIOR Y108 E5
 BECKTON LANA Y033 W

BECKTON NEBULA X096 N4
 BECKTON EOLA U562 CQ

Individual Data	
act. BW	51
SC	34.5
Frame	S+

HerdBuilder 165 / Top 50% | GridMaster 46 / Top 75%

CED	BW	WW	ADG	DMI	YW	MLK	ME	HPG	CEM	STY	MRB	REA
19	-6.3	49	0.18	1.07	79	28	-5	12	8	14	0.36	-0.21
1%	1%	85%	73%	24%	82%	18%	18%	36%	22%	70%	57%	94%

Age of Dam: 2 | Dam Weight: 830 | dMPPA: 99

125 Lots deep in the offering and we still have best 1% Calving Ease specialist - this one also ranks in the top 1/4 of Red Angus for milk, low feed intake, low maintenance energy requirement and maternal calving ease.

116 HALFMAN SYNERGY BE F293

12-19-2018 | CFH: F293 | A (100%) | #4058008

BECKTON NEBULA P P707
BROWN SYNERGY X7838
 CBAR BROWN ABIGRACE T714 LJC MISSION STATEMENT P27
 BROWN MS ABIGRACE L7730

BECKTON NEBULA M045
 BECKTON LANA M809 EP

BECKTON EPIC X330 L6
BECKTON BELGA B861 E
 BECKTON BELGA L261 VG

BECKTON EPIC T330 L5
 BECKTON KIT R503 LN

BECKTON VEGAS PK F485
 BECKTON BELGA D054 GL

Individual Data	
act. BW	75
SC	35.0
Frame	M

HerdBuilder 162 / Top 55% | GridMaster 48 / Top 44%

CED	BW	WW	ADG	DMI	YW	MLK	ME	HPG	CEM	STY	MRB	REA
17	-5.1	49	0.21	1.08	82	30	-1	8	10	14	0.57	-0.30
6%	5%	87%	57%	24%	77%	8%	33%	93%	5%	68%	15%	98%

Age of Dam: 5 | Dam Weight: 1305 | dMPPA: 100

118 HALFMAN TOPGUN LA G485

02-10-2019 | CTH: G485 | A (100%) | #4127652

5L ADVANTAGE 3267-221Y
5L TOPGUN 560-65B
 5L BLACK ADINA 525-560

BUF CRK THE RIGHT KIND U199
 5L ADINA 195-3267

TC STOCKMAN 365
 5L ADINA 293-525

BECKTON NEBULA P P707
 BKT LARKEISA T310 JC

BECKTON NEBULA M045
 BECKTON NEPTUNE R2 K065
 BECKTON BELGA K285 JL

Individual Data	
act. BW	75
SC	37.0
Frame	M

HerdBuilder 168 / Top 45% | GridMaster 49 / Top 34%

CED	BW	WW	ADG	DMI	YW	MLK	ME	HPG	CEM	STY	MRB	REA
19	-5.6	52	0.16	0.70	78	17	0	13	8	13	0.62	-0.10
1%	3%	77%	87%	9%	83%	96%	48%	15%	29%	77%	10%	80%

Age of Dam: 4 | Dam Weight: 1360 | dMPPA: 98

117 HALFMAN SYNERGY LK G602

03-31-2019 | CTH: G602 | A (100%) | #4127680

BROWN SYNERGY X7838
HALFMAN SYNERGY EO B059
 BECKTON EOLA U101 NB

BECKTON NEBULA P P707
 C-BAR & BROWN ABIGRACE T714

BECKTON NEBULA EN S347
 BECKTON EOLA S011 NB

BECKTON NEBULA L P093
BKT LARKEISA U583 NB
 BKT LARKEISA E578 HB

BECKTON NEBULA M045
 BECKTON MARTA M021 LN

BUF CRK HOBO 1961
 BKT LARKEISA B312 CB

Individual Data	
act. BW	88
SC	35.0
Frame	M+

HerdBuilder 211 / Top 2% | GridMaster 47 / Top 57%

CED	BW	WW	ADG	DMI	YW	MLK	ME	HPG	CEM	STY	MRB	REA
15	-4.0	57	0.22	1.21	93	30	-3	13	9	20	0.40	-0.28
13%	13%	59%	45%	34%	53%	6%	27%	18%	17%	5%	46%	98%

Age of Dam: 11 | Dam Weight: 1230 | dMPPA: 103

This linebred Nebula is out of a very productive, highly fertile dam who has maintained a 103 MPPA as an 11-yr-old.

119 HALFMAN SYNERGY LA G606

04-04-2019 | GKH: G606 | A (100%) | #4127416

BROWN SYNERGY X7838
HALFMAN SYNERGY EO B059
 BECKTON EOLA U101 NB

BECKTON NEBULA P P707
 C-BAR & BROWN ABIGRACE T714

BECKTON NEBULA EN S347
 BECKTON EOLA S011 NB

BECKTON NEBULA M045
 BECKTON NEPTUNE R2 K065
 BECKTON BELGA K285 JL

Individual Data	
act. BW	84
SC	35.0
Frame	M

HerdBuilder 181 / Top 24% | GridMaster 48 / Top 51%

CED	BW	WW	ADG	DMI	YW	MLK	ME	HPG	CEM	STY	MRB	REA
16	-4.7	55	0.2	0.92	87	28	-2	14	8	16	0.45	-0.35
11%	7%	68%	61%	16%	66%	15%	29%	11%	35%	44%	35%	99%

Age of Dam: 12 | Dam Weight: 1330 | dMPPA: 103

126 Beckton Accent G837 L5

05-29-2019 | BKT : G837 | A (100%) | #4170724

BECKTON ACCENT Y260 L3 BECKTON ACCENT W180 C2
BECKTON LANA W463 L

BECKTON ACCENT B150 N4
BKT LARKEISA S055 NB BECKTON NEBULA P P707
BECKTON LARKEISA P688 C

BECKTON LIKABLE B154 W4 BECKTON LIKABLE Y124 L3
BECKTON CHRISTY W429 W

BECKTON SHEBA D138 L
BSF JULIA B215 J BECKTON JULIAN X465 J5
BECKTON SHEBA P631 JC

Individual Data	
act. BW	68
SC	34.5
Frame	M-

HerdBuilder 182 / Top 22% | GridMaster 47 / Top 60%

CED	BW	WW	ADG	DMI	YW	MLK	ME	HPG	CEM	STY	MRB	REA
16	-4.7	50	0.17	0.70	78	21	-2	12	7	17	0.52	-0.35
7%	7%	84%	80%	9%	83%	82%	30%	32%	56%	31%	22%	99%

Age of Dam: 3 | Dam Weight: 765 | dMPPA: 83

128 HALFMAN ACCENT NB G555

02-18-2019 | CFH : G555 | A (100%) | #4127556

BECKTON ACCENT U777 C2 BECKTON CODY K1 P014
BECKTON SUSAN R022 CQ

BECKTON ACCENT Y312 N3
BKT LARKEISA S055 NB BECKTON NEBULA P P707
BECKTON LARKEISA P688 C

BECKTON NEBULA W065 C3 BECKTON NEBULA T269 E2
BECKTON LANA T104 CT

BECKTON INDIGO Y026 N
BECKTON INDIGO W866 A BECKTON CODY K1 P014
BECKTON INDIGO D780 JL

Individual Data	
act. BW	97
SC	38.0
Frame	M+

HerdBuilder 132 / Top 89% | GridMaster 46 / Top 80%

CED	BW	WW	ADG	DMI	YW	MLK	ME	HPG	CEM	STY	MRB	REA
14	-2.4	60	0.21	1.34	93	28	4	14	5	12	0.30	-0.17
32%	37%	50%	58%	45%	54%	16%	75%	7%	88%	87%	72%	90%

Age of Dam: 8 | Dam Weight: 1650 | dMPPA: 108

130 HALFMAN TAKEOVER CH G622

04-20-2019 | CFH : G622 | A (100%) | #4127628

LSF TAKEOVER 9943W HXC CONQUEST 4405P
LSF WIDELOAD R5014 U8061

HALFMAN TAKEOVER SM C214
HALFMAN SANDMN NB Z708 BECKTON NEBULA P P707
HALFMAN SANDMAN M601

HALFMAN GENESIS A831 BECKTON NEW ERA Y194
BECKTON EOLA U247 JL

HALFMAN CHIEF GN D462
HALFMAN CHIEF EP B024 BECKTON EPIC R397 K
HALFMAN CHIEF NB Y589

Individual Data	
act. BW	82
SC	36.0
Frame	M+

HerdBuilder 169 / Top 43% | GridMaster 49 / Top 29%

CED	BW	WW	ADG	DMI	YW	MLK	ME	HPG	CEM	STY	MRB	REA
16	-3.4	54	0.22	1.08	90	26	7	12	6	15	0.62	-0.23
10%	20%	72%	45%	24%	61%	32%	92%	27%	78%	56%	10%	95%

Age of Dam: 3 | Dam Weight: 1135 | dMPPA: 105

127 HALFMAN ACCENT BA G579

03-06-2019 | GKH : G579 | A (100%) | #4127398

BECKTON ACCENT Y312 N3 BECKTON ACCENT U777 C2
BKT LARKEISA S055 NB

BECKTON ACCENT C216 D4
BECKTON BELGA R716 DM BECKTON DOMINOR ZC M919
BECKTON BELGA K285 JL

BECKTON ACCENT Y312 N3 BECKTON ACCENT U777 C2
BKT LARKEISA S055 NB

HALFMAN BARMAN AC E707
HALFMAN BARMAN SY C223 BROWN SYNERGY X7838
HALFMAN BARMAN JL A884

Individual Data	
act. BW	60
SC	35.0
Frame	M

HerdBuilder 158 / Top 61% | GridMaster 47 / Top 62%

CED	BW	WW	ADG	DMI	YW	MLK	ME	HPG	CEM	STY	MRB	REA
18	-6.0	48	0.18	0.96	77	26	-4	12	8	13	0.59	-0.30
3%	2%	89%	74%	18%	84%	34%	22%	23%	35%	77%	13%	98%

Age of Dam: 2 | Dam Weight: 978 | dMPPA: 95

129 HALFMAN SYNERGY LA G592

03-14-2019 | CFH : G592 | A (100%) | #4127598

BECKTON NEBULA P P707 BECKTON NEBULA M045
BECKTON LANA M809 EP

BROWN SYNERGY X7838
CBAR BROWN ABIGRACE T714 LJC MISSION STATEMENT P27
BROWN MS ABIGRACE L7730

BECKTON EPIC X330 L6 BECKTON EPIC T330 L5
BECKTON KIT R503 LN

BECKTON LANA A642 E
BECKTON LANA X410 R BECKTON RANGER T603 H3
BECKTON LANA S866 CH

Individual Data	
act. BW	82
SC	40.0
Frame	M

HerdBuilder 146 / Top 79% | GridMaster 49 / Top 28%

CED	BW	WW	ADG	DMI	YW	MLK	ME	HPG	CEM	STY	MRB	REA
14	-3.1	56	0.24	1.22	93	28	-2	8	8	13	0.53	-0.25
28%	24%	66%	34%	34%	52%	17%	28%	89%	25%	84%	21%	96%

Age of Dam: 5 | Dam Weight: 1280 | dMPPA: 102

131 HALFMAN TEN-X SI G575

03-04-2019 | CFH : G575 | A (100%) | #4208392

REDHILL TEN X 104U 190A AAR TEN X 7008 SA
RED HILL B571 BARMAN 104U

RHF-RHR 190A TENX 49D
REDHILL 151Y AMBER 134B REDHILL U199 LANCER 151Y
RHF-CCCH 4X AMBER 46Z

BECKTON NEBULA P P707 BECKTON NEBULA M045
BECKTON LANA M809 EP

HALFMAN SIERRA NB X467
HALFMAN SIERRA U330 BECKTON HALFMANHUSTLR R588
OLC SIERRA R417

Individual Data	
act. BW	85
SC	37.0
Frame	M+

HerdBuilder 172 / Top 38% | GridMaster 49 / Top 23%

CED	BW	WW	ADG	DMI	YW	MLK	ME	HPG	CEM	STY	MRB	REA
13	-3.1	60	0.26	1.42	101	26	2	11	7	16	0.51	-0.07
47%	24%	49%	21%	53%	34%	35%	58%	49%	55%	47%	24%	74%

Age of Dam: 9 | Dam Weight: ET | dMPPA: 100

132 HALFMAN ACCENT CH G442

02-05-2019 | CTH : G442 | A (100%) | #4127642

BECKTON ACCENT Y312 N3 BECKTON ACCENT U777 C2
BKT LARKEISA S055 NB

BECKTON ACCENT C216 D4
BECKTON BELGA R716 DM BECKTON DOMINOR ZC M919
BECKTON BELGA K285 JL

BUF CRK THE RIGHT KIND U199 BUF CRK LANCER R017
BUF CRK SHOSHONE R353

HALFMAN CHIEF RK E755
HALFMAN CHIEF DV Z707 HALFMAN DIVIDEND U398
HALFMAN CHIEF S506

Individual Data	
act. BW	70
SC	
Frame	M+

HerdBuilder 156 / Top 64% | GridMaster 48 / Top 52%

CED	BW	WW	ADG	DMI	YW	MLK	ME	HPG	CEM	STY	MRB	REA
14	-3.3	51	0.19	0.85	82	24	-2	11	7	14	0.51	-0.31
23%	21%	81%	66%	14%	76%	55%	32%	42%	58%	70%	24%	98%

Age of Dam: 2 | Dam Weight: 1020 | dMPPA: 96

134 HALFMAN DEFENDER RB G422

01-22-2019 | GKH : G422 | A (100%) | #4127286

5L ADVOCATE 817-14W 5L SIGNATURE 5615
5L MARTA 345-817

5L DEFENDER 560-30Z
5L BLACK ADINA 525-560 TC STOCKMAN 365
5L ADINA 293-525

BECKTON CLIFFTOP W692 E3 BKT CLIFFTOP TP R288
BECKTON LYDIA S274 EP

HALFMAN REBALAS CT E823
HALFMAN REBALAS NC B003 LSF NIGHT CALVER 9921W
HALFMAN REBALAS IM Z684

Individual Data	
act. BW	65
SC	39.0
Frame	M

HerdBuilder 105 / Top 99% | GridMaster 49 / Top 28%

CED	BW	WW	ADG	DMI	YW	MLK	ME	HPG	CEM	STY	MRB	REA
15	-4.7	58	0.23	1.58	94	26	-4	8	5	8	0.53	0.17
13%	7%	56%	41%	69%	49%	37%	20%	92%	81%	99%	21%	22%

Age of Dam: 2 | Dam Weight: 1105 | dMPPA: 102

136 HALFMAN SYNERGY CH G591

03-12-2019 | CFH : G591 | A (100%) | #4127596

BECKTON NEBULA P P707 BECKTON NEBULA M045
BECKTON LANA M809 EP

BROWN SYNERGY X7838
CBAR BROWN ABIGRACE T714 LJC MISSION STATEMENT P27
BROWN MS ABIGRACE L7730

BECKTON JULIAN G2 M345 BECKTON JULIAN GG B571
BECKTON LANA H544 WR

BECKTON CHRISTY T444 JL
BECKTON CHRISTY L654 JL BECKTON JULIAN GG B571
BECKTON CHRISTY H207 HD

Individual Data	
act. BW	86
SC	35.0
Frame	M-

HerdBuilder 201 / Top 5% | GridMaster 50 / Top 13%

CED	BW	WW	ADG	DMI	YW	MLK	ME	HPG	CEM	STY	MRB	REA
15	-3.4	54	0.23	0.86	91	26	-5	12	8	18	0.65	-0.41
21%	20%	71%	39%	14%	58%	38%	17%	27%	29%	19%	7%	99%

Age of Dam: 12 | Dam Weight: 1260 | dMPPA: 94

We weren't kidding when we said you needed to study this offering till the very last bull. 6 Bulls on these final two pages rank in the best 10% or better for Calving Ease and the final two bulls in the sale are both over 200 HerdBuilder!

133 HALFMAN TAKEOVER CC G559

02-21-2019 | GKH : G559 | A (100%) | #4127394

LSF TAKEOVER 9943W HXC CONQUEST 4405P
LSF WIDELOAD R5014 U8061

HALFMAN TAKEOVER SM C214
HALFMAN SANDMN NB Z708 BECKTON NEBULA P P707
HALFMAN SANDMAN M601

HALFMAN NEBULAAL Y593 BECKTON NEBULA P P707
HALFMAN ALEXIS U352

HALFMAN CHOCTAW NB B153
HALFMAN CHOCTAW U347 OLC CHATEAU L416
HALFMAN CHOCTAW CHIEF

Individual Data	
act. BW	80
SC	38.0
Frame	M+

HerdBuilder 172 / Top 38% | GridMaster 48 / Top 48%

CED	BW	WW	ADG	DMI	YW	MLK	ME	HPG	CEM	STY	MRB	REA
17	-5.5	45	0.21	1.03	78	26	2	10	8	16	0.54	-0.24
6%	3%	93%	53%	22%	82%	30%	63%	66%	32%	48%	19%	96%

Age of Dam: 5 | Dam Weight: 1130 | dMPPA: 100

135 HALFMAN ACCENT TA G581

03-07-2019 | GKH : G581 | A (100%) | #4127400

BECKTON ACCENT Y312 N3 BECKTON ACCENT U777 C2
BKT LARKEISA S055 NB

BECKTON ACCENT C216 D4
BECKTON BELGA R716 DM BECKTON DOMINOR ZC M919
BECKTON BELGA K285 JL

BIEBER H HUGHES W109 BASIN HOBO 0545
BASIN ROSE 06T0

HALFMAN TAMARA HG E777
BECKTON TAMARA U011 LO BECKTON LOKI CL S284
BECKTON TAMARA S314 HU

Individual Data	
act. BW	65
SC	34.0
Frame	M-

HerdBuilder 163 / Top 53% | GridMaster 46 / Top 84%

CED	BW	WW	ADG	DMI	YW	MLK	ME	HPG	CEM	STY	MRB	REA
16	-4.3	54	0.18	0.98	83	25	0	11	8	15	0.36	-0.34
8%	10%	74%	75%	19%	75%	47%	41%	54%	25%	58%	57%	99%

Age of Dam: 2 | Dam Weight: 1005 | dMPPA: 98

137 HALFMAN NEBULA LA G522

02-12-2019 | GKH : G522 | A (100%) | #4127366

BECKTON NEBULA M045 BECKTON NEPTUNE R2 K065
BECKTON BELGA K285 JL

BECKTON NEBULA P P707
BECKTON LANA M809 EP BECKTON EPIC K1 K863
BECKTON LANA K253 DM

BECKTON NEW ERA Y194 BECKTON NEBULA P P707
BKT LARKEISA T310 JC

HALFMAN LARKEISA NE C289
BECKTON LARKEISA X094 H BECKTON HASTEN U108 J3
BKT LARKEISA U583 NB

Individual Data	
act. BW	60
SC	35.0
Frame	M-

HerdBuilder 206 / Top 3% | GridMaster 46 / Top 75%

CED	BW	WW	ADG	DMI	YW	MLK	ME	HPG	CEM	STY	MRB	REA
18	-6.7	42	0.19	0.91	73	27	-5	11	8	20	0.49	-0.43
3%	1%	96%	66%	16%	89%	27%	17%	55%	33%	5%	28%	99%

Age of Dam: 4 | Dam Weight: 1125 | dMPPA: 98

How the Halfmann-Beckton Commercial Female Sale will work:

- Commercial Females were videoed at their respective ranch of origin prior to the sale. That video will be available with the bull videos on Superior and at HalfmannRedAngus.com.
- Females will be sold in uniform groups of 10-20 head according to age and pregnancy status.
- The winning bidder of any groups sold as "gate-cut" will have the option of "rolling" the remaining head in that group.
- The above lots include general descriptions of the cattle selling as well as deliver information. The Sale Day Supplement will have any updated palpation/ultrasound information and how that impacts the exact number of head in each lot.
- Halfmann commercial females sell FOB Miles, TX. Beckton will pay the first 400 miles freight from Sheridan, WY for Beckton commercial females.

All commercial Females identified as "Bred" have been determined pregnant by a competent ultrasound or palpation technician.



C1 Halfmann	# Head	Age	Genetic Makeup	Estimated Calving Dates	Service Sire(s)
	41	Bred Heifers	Red Angus	(18) AI Bred due 01/15/21 (23) Nat. Service due 01/25/21 through 03/11/21	AI to ProfitMaker then exposed to Lot 2, 3 and 4 Oracle sons.
Sold in three "gate cuts" of 6 AI bred then three "gate cuts" of 6 and one gate cut of 5 Nat.Serv.Bred. FOB Miles, TX					

C2 Halfmann	# Head	Age	Genetic Makeup	Estimated Calving Dates	Service Sire(s)
	12	2-4 Yr-olds	Red Angus	Nat. Service due 3/2/21 through 3/31/21	Halfmann Red Angus Herdsires: 3522613, 3716839, 3716781 & 1746187
Sold in 2 "gate cuts" of 6 head each. FOB Miles, TX					

C3 Halfmann	# Head	Age	Genetic Makeup	Estimated Calving Dates	Service Sire(s)
	12	5-7 Yr-olds	Red Angus	Nat. Service due 2/10/21 through 3/21/21	Halfmann Red Angus Herdsires: 3522613, 3716839, 3716781 & 1746187
Sold in 2 "gate cuts" of 6 head each. FOB Miles, TX					

C4 Beckton	# Head	Age	Genetic Makeup	Estimated Calving Dates	Service Sire(s)
	12	Bred Heifers	Red Angus	Starting 3/5/21	Beckton Calving Ease Herd Sires
Sold in one lot of 12 head. 400 miles free from Sheridan, WY					

C5 Beckton	# Head	Age	Genetic Makeup	Estimated Calving Dates	Service Sire(s)
	40	2-5 year-olds	Red Angus	Starting 3/5/21	Beckton Calving Ease Herd Sires
Sold in two "gate cuts" of 20 head. 400 miles free from Sheridan, WY					

C6 Beckton	# Head	Age	Genetic Makeup	Estimated Calving Dates	Service/Service Sire(s)
	40	2-5 year-olds	Red Angus	Starting 4/15/21	Beckton Calving Ease Herd Sires
Sold in two "gate cuts" of 20 head. 400 miles free from Sheridan, WY					

C7 Beckton	# Head	Age	Genetic Makeup	Estimated Calving Dates	Service/Service Sire(s)
	20	6-9 year-olds	Red Angus	Starting 3/5/21	Beckton Calving Ease Herd Sires
Sold in one lot of 20 head. 400 miles free from Sheridan, WY					

SWEETWATER

STEEL



Metal Building Products

March 2020

Two Locations to Serve Your Needs

www.sweetwatersteel.com

Main Office

Sweetwater Steel Company
10416 N I-20
Sweetwater, Tx 79556
Located 4 miles west of Sweetwater
(Exit mile marker 240)

Phone: 325-235-3644
Toll Free: 800-982-3384
Fax: 325-235-3935



Store Hours
Mon-Fri: 8:00 a.m. - 5:00 p.m.
Sat: 8:00 a.m. - 11:30 a.m.

Branch Location

Sweetwater Steel Company
1047 Early Blvd
Early, Tx 76802
Located downtown Early on Hwy 67/377

Phone: 325-641-1345
Toll Free: 877-741-1345
Fax: 325-641-2834

Metal Building Products - Structural Steel - Fencing Supplies

ALL PRICES IN THIS CATALOGUE SUBJECT TO CHANGE WITHOUT NOTICE

Ref Sire	Reg#	Name	HB	GM	CED	BW	WW	YW	ADG	DMI	MM	ME	HPG	CEM	STAY	Marb	REA
A	1703720	BROWN ORACLE B112	205	56	15	-2.3	84	137	0.33	1.69	19	7	5	8	17	0.71	0.75
B	1627789	5L BOURNE 117-48A	167	50	14	-4	76	114	0.23	1.64	24	-2	19	4	13	0.68	0.02
C	1384811	BROWN SYNERGY X7838	197	49	17	-5.7	49	85	0.22	1.46	35	-1	8	12	18	0.83	-0.45
D	3487279	BECKTON LIKABLE C229 R3	191	49	15	-1.8	66	102	0.23	1.06	24	-1	10	6	18	0.37	0.19
E	979031	BECKTON NEBULA P P707	194	49	16	-5.7	56	98	0.26	1.44	28	-1	11	7	18	0.74	-0.39
F	1701524	5L TOPGUN 560-65B	153	50	20	-6.2	56	91	0.22	1.05	14	-11	18	10	9	0.59	0.21
G	1549933	5L DEFENDER 560-30Z	91	51	16	-4.8	60	98	0.24	2.15	21	-12	8	2	6	0.88	0.26
H	1451236	BECKTON ACCENT Y312 N3	115	45	17	-5.5	55	84	0.18	1.48	25	-6	16	6	8	0.55	-0.25
I	3487412	BECKTON ACCENT C216 D4	146	47	18	-5.2	49	79	0.19	0.79	25	-6	7	7	13	0.58	-0.41
J	3550323	RHF-RHR 190A TENX 49D	148	51	11	-1.7	65	108	0.27	1.41	28	2	11	6	13	0.62	-0.02
K	1706097	BECKTON EPIC B310 J6	174	48	14	-2	69	104	0.22	1.38	28	-1	12	6	16	0.3	0
L	1705638	BECKTON ACCENT B740 W3	189	49	21	-5.7	66	103	0.23	1.45	26	-1	11	9	16	0.35	0.24
M	1677186	HALFMANN SYNERGY EO B059	186	48	20	-8.8	48	81	0.2	1.08	35	-2	12	12	15	0.65	-0.48
N	1746293	HALFMANN TAKEOVER SM C214	145	48	20	-6.3	47	80	0.2	1.01	26	4	13	8	11	0.64	-0.16
O	1705884	BECKTON NEBULA B557 J3	207	51	15	-5.2	53	96	0.27	1.09	27	0	11	6	19	0.67	-0.02
P	1331776	BECKTON ACCENT W180 C2	247	47	20	-5.2	61	93	0.2	1.33	25	-1	12	8	24	0.27	0.04
Q	1626302	BECKTON JULIAN A434 N6	163	50	11	-1	72	115	0.27	1.27	19	3	12	3	15	0.41	-0.17
R	1705725	BECKTON LIKABLE B032 C5	208	53	18	-6.1	53	109	0.35	1.35	26	7	13	7	18	0.58	-0.1
S	3776481	BECKTON CARDINAL E381 J2	167	49	15	-5	56	95	0.24	0.84	25	-2	14	6	14	0.27	0.01
T	3776759	BECKTON ACCENT E492 N4	189	47	19	-5.4	60	90	0.19	1.26	30	3	11	9	17	0.42	0.04
U	3776785	BECKTON CARDINAL E673 L	223	50	22	-6.8	61	98	0.23	0.99	25	-1	13	12	18	0.44	0.28
V	3777591	BECKTON LIKABLE E391 N4	226	50	14	-3.1	64	106	0.26	0.95	26	3	12	7	22	0.38	-0.11
W	3778225	BECKTON HUGHES E261 S3	188	46	18	-5.9	58	86	0.17	1.25	28	-6	13	10	17	0.36	-0.13
X	1705673	BECKTON LIKABLE B549 N4	217	49	13	-2.3	67	112	0.28	1.63	27	5	12	6	21	0.34	0.1
Y	3777405	BECKTON LEGEND E032 E3	198	50	21	-3.9	60	98	0.23	0.75	25	-2	11	10	16	0.38	0.18
Z	1705827	BECKTON ACCENT B150 N4	189	47	14	-3.9	58	82	0.15	0.78	25	-5	12	5	19	0.62	-0.44



**- WFL ProfitMaker E7030 -
ABS-Global's \$50,000 Calving Ease and Feed
Efficiency Specialist is the AI Service Sire
on Lot C1 Bred Heifers**

BIDDING DISPUTES

The Auctioneer will settle any disputes as to bids, and his decision on such matters shall be final.

TERMS

Terms of sale are cash. All settlements will be made with the clerks of the sale immediately following the conclusion of the sale and before any cattle will be released.

PURCHASER'S RISK

Each animal becomes the risk of the Buyer as soon as sold. Insurance will be available sale day.

CERTIFICATE OF REGISTRY

A certificate of registry will be furnished to the Buyer for each animal after settlement has been made.

ANNOUNCEMENTS

Changes or errors in the information contained in this catalog relating to the animals offered for sale will be announced from the auction box and such announcements shall take precedence over printed matter in the catalog.

BREEDING GUARANTEE

All animals sold are guaranteed breeders by the Seller. All claims for adjustment or refund must be made in writing within six months of the sale date. In the event an animal is claimed to be a non-breeder, the purchaser may return the animal to the ranch of the seller if in good condition, free of disease, and complying with the health requirements of the Seller's state. The Seller will be entitled to six months trial following the return of the animal in which to prove that the animal is a breeder. If at the end of six months, the Seller shall be obligated, at his option, to refund the purchase price, replace the animal with another of equal value, or grant the buyer credit for use on cattle marketed by the seller. The return of the full purchase price shall, in any case, be deemed full satisfaction and settlement. If the Seller proved the animal to be a breeder, it shall be the obligation of the purchaser to take delivery of the animal at the purchaser's expense. All animals are guaranteed to be breeders, with the exception of a) calves under twelve months of age; or b) animals shown by Purchaser after sale; or c) gross negligence or willful misconduct on the part of the Purchaser.

SELLER'S SEMEN RIGHTS

Seller keeps a 50% revenue-sharing breeding interest without possession, in every bull in this catalog unless otherwise noted in this catalog or in the sale day supplement. In the event Seller elects to collect semen from a designated bull, it will be done at Seller's expense and during such time when purchaser is not using the bull for breeding.

Future semen collections of the bull must be made known to all owners prior to collecting. These collections and costs will be divided according to each owner's interest unless otherwise agreed upon mutually by all owners.

LIABILITY

Neither owners, sale managers, clerks nor anyone connected with the sale assumes responsibility, legal or otherwise, for damage of any kind.

CONTRACT

The above terms and conditions shall constitute a contract between the buyer and seller of each animal sold.

IMPLIED WARRANTY

Except for those stated in the terms and conditions, there are no warranties or implies, as to merchantability or fitness for a particular purpose with respect to the cattle being sold in this auction. The warranties set forth in the terms and conditions are in lieu of all other warranties, either expressed or implied, and the remedies provided therein shall be the sole and exclusive remedy of the buyer, or any party claiming through the buyer, for any breach of warranty or guarantee therein provided and all other obligations or liabilities.



At Capital Farm Credit, we do things differently. We're a cooperative—that means we're owned by the same ranchers, farmers and agribusinesses we serve. Whether you're looking for operating capital, a beginning rancher loan or need help navigating a rural land purchase, your goals are our goals.

Partnership that really pays.



SAN ANGELO 325.949.8114
5255 Bentwood Drive

capitalfarmcredit.com
NMLS493828



Red Angus Breeder since 1964
2501 CR 357
Miles, TX 76861
325.468.2390
info@halfmannredangus.com
HalfmannRedAngus.com



2020 Halfmann - Beckton
Profit Through Experience Sale
Wednesday, October 7, 2020 • 1 pm • at the ranch in Miles, TX