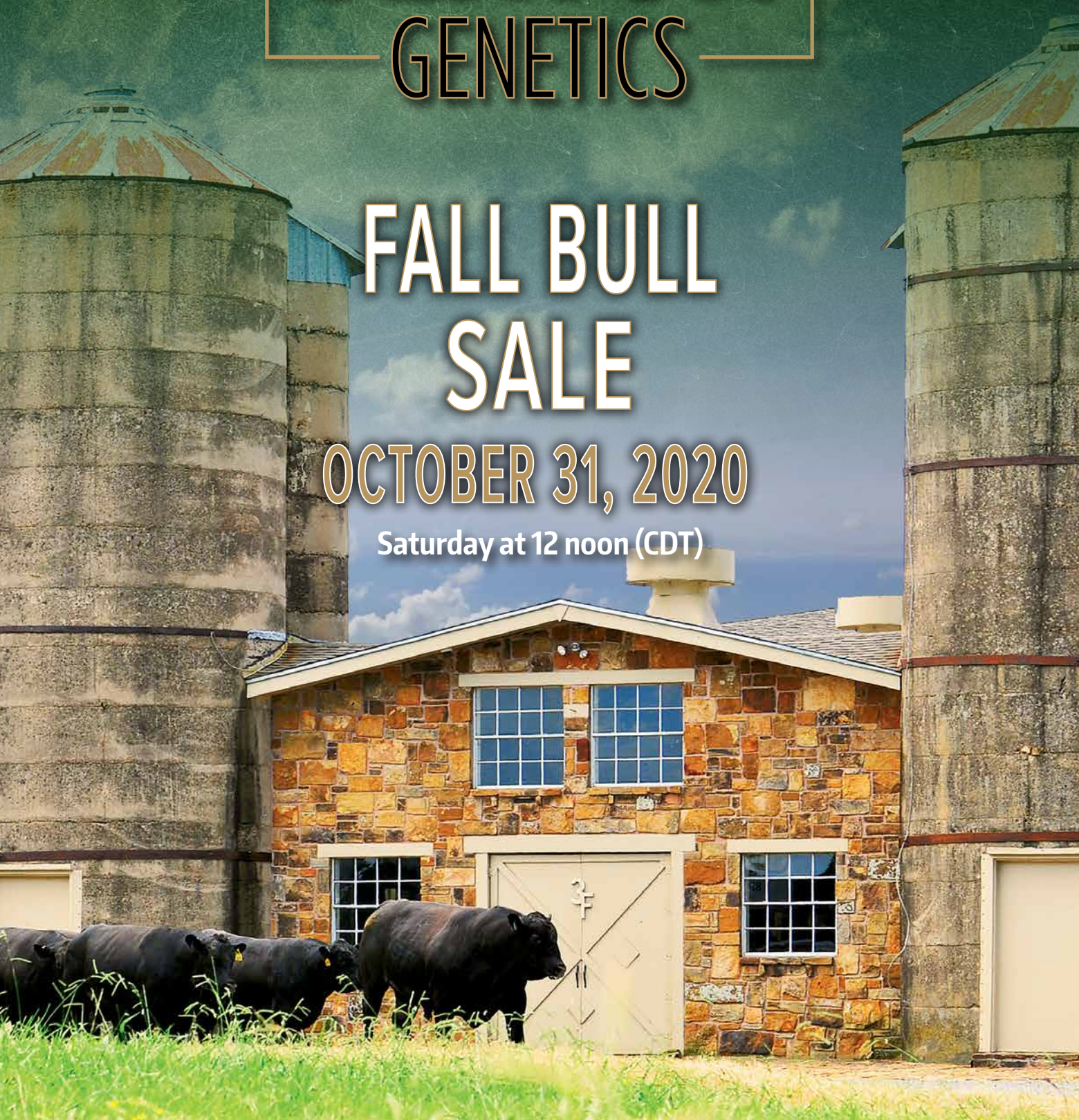


# SEXTON GENETICS

## FALL BULL SALE

OCTOBER 31, 2020

Saturday at 12 noon (CDT)





**Mark Sexton**

Dear Sexton Genetics Customers and Friends,

Welcome to the Fall Bull Sale! Consider this your personal invitation to join us, Saturday, October 31, 2020 at 12 noon. Cattle will be on display Friday afternoon for your visual appraisal and individual videos will be online at [www.superiorlivestock.com](http://www.superiorlivestock.com). Livestock Nutrition Center will be providing the lunch and refreshments at the sale beginning at 11 A.M.

55 super stout, coming 2-year-old Angus bulls will be available for your selection. These bulls were developed with longevity in mind. After weaning, the bulls were grazed on wheat pasture until the spring 2020 graze out. Post wheat graze out the bulls were moved on grass traps and fed a high roughage ration. We feel this will help to insure feet and legs, and overall soundness.

At Sexton Genetics we strive to raise the best breeding bulls possible for our valued customers. We have implemented all tools and technologies possible, all the bulls selling will have genomically enhanced EPDs and have made the phenotype sort. Every bull selling has passed a breeding soundness exam and carry a first breeding season guarantee.

Please stop by the ranch or call to learn more about the bulls and females selling. As times change our motto remains the same "Customer Service with Every Purchase." Thank you for your continued support and the opportunity to be your genetic supplier.

Thank You,

Mark Sexton  
Sexton Genetics

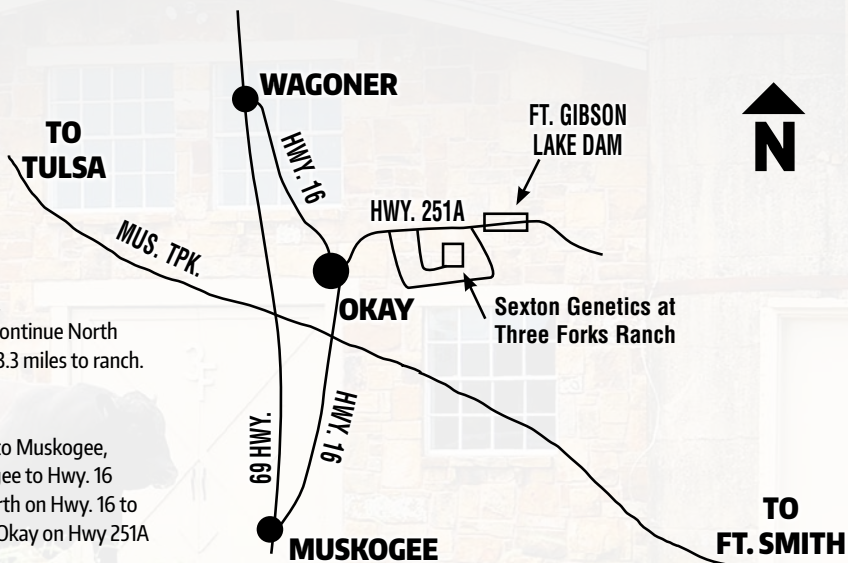
### Directions to Three Forks Ranch sale headquarters

#### From Tulsa:

Take the Muskogee Turnpike to Muskogee, OK. Exit on Hwy. 62 West. Continue west to Hwy 16 North (also York Street). Go North on Hwy. 16 to Okay. Continue North through Okay on Hwy. 251A for 3.3 miles to ranch.

#### From Vinita:

From I-44, take Hwy. 69 South to Muskogee, then east on Hwy. 62 in Muskogee to Hwy. 16 North (also York Street). Go North on Hwy. 16 to Okay. Continue North through Okay on Hwy 251A for 3.3 miles to the ranch.





# SEXTON GENETICS

## FALL BULL SALE

Saturday at 12 noon (CDT)

OCTOBER 31, 2020

6959 Hwy. 251A, Fort Gibson, OK 74434

### Selling

53 - Coming 2-Year-Old Bulls | 1 - 2 Year-Old Bull



All bulls  parent verified and complete performance data.

#### Schedule of Events

**Saturday, October 31, 2020**

11 a.m. - Lunch served and Sponsored by  
Noon - Bull and Female Sale

**Cattle will sell in sale book order.**

#### Ranch Headquarters

3.3 miles east of Okay, OK on  
Highway 251A

#### Sale Day Phones

Mark Sexton.....(918) 541-0418  
Dustin Layton.....(405) 464-2455  
Steve Zybach.....(806) 255-6904  
Sarah Sweet.....541-297-8494



#### Sale Marketing Staff

Dustin Layton, Auctioneer..... (405) 464-2455  
Andee Marston, Layton Auction Service, LLC. (785)250-4449  
Jeff Mafi, *Angus Journal*..... (816) 344-4266  
Chisolm Kinder, *Oklahoma Cowman*..... (405) 747-4683

#### Sale Manager



Dustin Layton  
(405) 464-2455  
www.laytonauction.com

#### Hotel Information

Hampton Inn  
3100 Military Boulevard  
Muskogee, OK  
(918) 682-2587  
Holiday Inn Express  
3133 Azalea Drive  
Muskogee, OK  
(918) 687-4224  
Super 8 Motel  
2240 South 32nd Street  
Muskogee, OK  
(918) 683-8888

#### Air Transportation

Tulsa International Airport is only 45 minutes (40 miles) northwest of the ranch.  
Most major airlines service Tulsa.

#### Herd Health

All bulls have all vaccinations required to qualify for Boehringer Ingelheim Range Ready Program.

#### Delivery of Sale Cattle

Free delivery the first 300 miles on bull purchases \$10,000 or more. No individual bull will exceed a delivery cost of \$300 per individual.

#### Absentee Bids

If you are unable to attend the sale but would like to bid, please contact the owners, sale manager, or any member of the sale staff.



**ANGUS MEDIA** Visit the Angus Journal Web site, [www.angus.org](http://www.angus.org), and view this sale book online. References: American Angus Association, AHIR, AngusSource, CAB, Pathfinder. EPDs current as of September 20, 2020. Updated EPDs can be viewed online at [www.angus.org](http://www.angus.org)

#### Terms and Conditions

All bulls will sell under the suggested Terms & Conditions of the American Angus Association. Cattle will not be transported or ownership transferred until payment has been received.


### Bull Guarantee

All bulls selling have passed a Breeding Soundness Exam and have been deemed Satisfactory Breeders by Dr. Pat Edmonds DVM. The bulls will not be guaranteed to freeze semen for the purposes of Artificial Insemination, Flushing or IVF.

If the bull is injured within the first breeding season (in case of bulls making them functionally infertile) we will provide you a satisfactory replacement after you bring the bull back in suitable condition or issue a credit of \$1,250 (salvage value) minus purchased price toward the purchase of any animal in a future Sexton Genetics Sale. This guarantee does not include death of a bull from natural causes or physical harm. There will be mortality insurance available at the clerks desk if you choose to insure your purchases. Breeding season is defined as the 90-day period following the first turn out date of the bulls. If you do not intend to use the bull(s) for some time after the purchase, we suggest an additional BSE by a licensed veterinarian to assure the highest conception rates possible. We suggest normal management practices in caring for your cattle.



SG Alternative 9531 - Lot 1

**SEXTON GENETICS**  
**1**  
**SG Alternative 9531**   
**Birth Date: 2-15-2019 • Bull \*19559737 • Tat.: 9531**

Poss Easy Impact 0119  
 Baldridge Alternative E125  
 +\*18837398 Baldridge Blackbird A030

#Poss Total Impact 745  
 Poss Elmaretta 736  
 #\*Hoover Dam  
 Baldridge Blackbird X89

**HDSOK**  
 +\*VAR Index 3282  
 Crazy K Rita 7070  
 +\*18724957 \*Woodside Rita 3423

#+GAR Ingenuity  
 +\*Sandpoint Blackbird 8809  
 #\*AAR Ten X 7008 SA  
 +\*Deer Valley Rita 1663

Act BW	62
Adj WW	720
Adj YW	1114

CED	BW	WW	YW	Milk	SC	SEN
+9	+1	+67	+133	+33	+1.00	-39
	25%	20%	5%	10%		

CW	MARB	REA	FAT	SM	SW	SF	SG	SB	SC
+71	+76	+1.03	-.008	+62	+74	+128	+64	+193	+312
2%	25%	4%	25%		15%	1%	15%	1%	1%



Baldridge Alternative E125 - Sire of Lot 1

**Calving-Ease Recommended for use on Heifers.**

This herd bull prospect is sired by the popular Baldridge Alternative E125. 9531 presents a very attractive profile with added shape, width, and volume. He is sound on the ground and glides with ease when put in motion. 9531 is solid on his EPD profile excelling across the board for calving-ease, performance, and value-added carcass merit. It is hard to find bulls with this kind of build and softness with the tremendous \$C and \$B 9531 displays.

This Dually son is built right from the ground up. You would be hard pressed to find a bull to match his power, design, rib, and overall presence. If you sell your calves by the pound and want to retain a powerful set of replacement females, take a good look here! Truly one of the unique bulls to sell this fall.



SG Dually 9507 - Lot 2

SEXTON GENETICS

2

DL Dually  
\*18608253



Zebo Queen 536  
18238486

## SG Dually 9507

Birth Date: 2-19-2019 • Bull \*19574093 • Tat.: 9507

DL Sonic 444  
\*DL Incentive 2103

#\*KG Solution 0018  
DL Barbara 792  
DL Incentive 228  
DL Karama 39

+\*PA New Limit 3744  
+Zebo Queen 1044

#+GAR New Design 5050  
#+PA Lorna Marshall 2905-730  
#\*Summitcrest Complete 1P55  
+EF Rita 7297

Act BW  
72  
Adj WW  
864  
Adj YW  
1170

CED	BW	WW	YW	Milk	SC	\$EN			
+5	+2.3	+77	+133	+33	+1.11	-43			
		4%	5%	10%					
CW	MARB	REA	FAT	\$M	\$W	\$F	\$G	\$B	\$C
+55	+.51	+.47	+.032	+60	+83	+85	+42	+127	+225
20%				4%					

SEXTON GENETICS

3

DL Dually  
\*18608253



Sweet T Rita 705  
\*18938506

## SG Dually 907

Birth Date: 2-19-2019 • Bull \*19680143 • Tat.: 907

DL Sonic 444  
\*DL Incentive 2103

#\*KG Solution 0018  
DL Barbara 792  
DL Incentive 228  
DL Karama 39

+\*KCF Bennett Fortress  
+\*Deer Valley Rita 5304

#\*Connealy Consensus  
\*Thomas Patricia 9705  
#\*Plattmere Weigh Up K360  
+Deer Valley Rita 9927

Act BW  
69  
Adj WW  
792  
Adj YW  
1266

CED	BW	WW	YW	Milk	SC	\$EN			
+3	+2.5	+83	+139	+12	+1.14	-38			
		2%	3%						
CW	MARB	REA	FAT	\$M	\$W	\$F	\$G	\$B	\$C
+46	+.23	+.47	+.005	+42	+64	+80	+31	+111	+186



SG Dually 907 - Lot 3

A big spread Dually son that is loaded with eye-appeal and just carries that herd bull presence. Big testicles, big hipped, wide topped, long in his design and eye-catching. He will sire pounds with style.



If you are in the market for a true set of Angus bulls, Sexton Genetics has them stacked in the offering. Just look at the bone, body, and power they exude. This is one powerful set of bulls that excel in phenotype and numerically. Just check out the WW and YW EPDs!

**SG Absolute 9508 - Lot 4**

**SEXTON GENETICS**  
**4**  
**SG Absolute 9508**  
 Birth Date: 2-15-2019 • Bull \*19574177 • Tat.: 9508

#\*KCF Bennett Absolute  
 EXAR Absolute 6177B  
 \*18378473

#\*SAV Final Answer 0035  
 Thomas Miss Lucy 5152  
 #\*EXAR Denver 2002B  
 +\*EXAR Royal Lass 3090

#\*Quaker Hill Rampage 0A36  
 Boyd Erica Dianna 6076  
 +\*18464011

#MCC Daybreak  
 +\*QHF Blackcap 6E2 of 4V16 4355  
 Boyd Next Day 6010  
 +Boyd Erica Dianna 606

Act BW 78  
 Adj WW 861  
 Adj YW 1319

CED	BW	WW	YW	Milk	SC	\$EN
+8	+2.2	+79	+148	+31	+1.09	-48
		3%	1%	15%		

CW	MARB	REA	FAT	SM	SW	SF	SG	SB	SC
+66	+74	+1.06	+0.32	+40	+80	+115	+61	+175	+267
4%		3%			5%	2%	15%	3%	10%

**SEXTON GENETICS**  
**5**  
**SG Cowboy Up 9564**  
 Birth Date: 3-6-2019 • Bull \*19559754 • Tat.: 9564

\*HA Cowboy Up 5405  
 Wilks Cowboy Up 7153  
 +\*18714843

\*HA Outside 3008  
 #\*HA Blackcap Lady 1602  
 #\*AAR Ten X 7008 SA  
 #\*Thomas Ester 2513

#\*Baldridge Waylon W34  
 Vintage Fanny 5491  
 +\*18425163

\*2 Bar Mile High 9360

#\*GAR-EGL Protege  
 \*Baldridge Blackcap T163  
 #\*Riverbend Mile High 3718  
 2 Bar Objective 863

Act BW 70  
 Adj WW 826  
 Adj YW 1184

CED	BW	WW	YW	Milk	SC	\$EN
+4	+2.1	+71	+126	+21	+65	-32
		10%	10%			

CW	MARB	REA	FAT	SM	SW	SF	SG	SB	SC
+32	+43	+54	-.032	+42	+64	+59	+45	+104	+177
			10%						

You will love the depth and power that comes with this beast! One of the biggest middle bulls in the offering, and there are several to choose from, that has tremendous muscle shape and added style.



**SG Cowboy Up 9564 - Lot 5**

SEXTON GENETICS

6

**SG Successor 9578**

Birth Date: 3-12-2019 • Bull \*19566293 • Tat.: 9578

3F Successor 6757  
18612884\*EXAR Successor 4535B  
Zebo Queen 357#\*EXAR Denver 2002B  
Exar Erica 8156  
#\*EF Complement 8088  
+Zebo Queen 089

#\*EXAR Upshot 0562B

#Sitz Upward 307R  
#+EXAR Barbara T020  
#Summitcrest High Prime OH29  
+\*GAR New Design 1200

VAR Blackcap 3257

+\*17513360

+\*VAR Blackcap 5042

CE	BW	WW	YW	Milk	SC	SEN			
+3	+3.8	+78	+130	+18	+1.24	-16			
		4%	10%		25%				
CW	MARB	REA	FAT	SM	SW	SF	SG	SB	SC
+69	+.54	+.75	+.008	+69	+67	+109	+49	+159	+275
3%		25%		25%	25%	4%		10%	10%

Act BW  
65  
Adj WW  
784  
Adj YW  
1154

9578 is a wide-topped individual with muscle popping from all angles. You have to appreciate the balance, eye-appeal, bone and true power this herd bull displays.



SG Successor 9578 - Lot 6

SEXTON GENETICS

7

**SG Manning 9510**

Birth Date: 2-12-2019 • Bull \*19560540 • Tat.: 9510

Quaker Hill Manning 4EX9

+\*17831034

#\*EXAR Denver 2002B  
+\*Quaker Hill Blackcap 0A32#\*EXAR Upshot 0562B  
+Exar Royal Lass 1067  
#MCC Daybreak  
+\*QHF Blackcap 6E2 of4V16 4355

#\*AAR Ten X 7008 SA

#\*Mytty In Focus  
#AAR Lady Kelton 5551  
#\*SydGen CCG7  
+Sitz Henrietta Pride 643T

ACR Henrietta Pride 4140

+\*18163396

+\*PF CCG7 Henrietta Pride 1044

CE	BW	WW	YW	Milk	SC	SEN			
+9	+2.4	+80	+133	+25	+5.1	-25			
		3%	5%						
CW	MARB	REA	FAT	SM	SW	SF	SG	SB	SC
+64	+.72	+.96	-.009	+72	+83	+109	+62	+170	+292
5%		10%	25%	20%	4%	4%	15%	5%	3%

Act BW  
74  
Adj WW  
794  
Adj YW  
1397**Calving-Ease Recommended for use on Heifers.**

We really like this calving-ease bull as he is smooth shouldered and has a beautiful head. He is a calving-ease bull that does not sacrifice performance as evident in his EPD profile and actual performance with nearly a 1,400 lb. adjusted YW.



SG Manning 9510 - Lot 7

SEXTON GENETICS

8

**SG Payweight 9538**

Birth Date: 4-3-2019 • Bull \*19559751 • Tat.: 9538

De-Su A3-ET  
+\*18798263#+\*Basin Payweight 1682  
\*TCA Total Imp Treasure 309#+\*Basin Payweight 0065  
21AR O Lass 7017  
#Poss Total Impact 745  
\*TCA Protege Treasure 003

#\*EXAR Upshot 0562B

#Sitz Upward 307R  
#+EXAR Barbara T020  
#\*Stevenson CE Deluxe 1914  
+JLM 1407 New Design 5334

SJH Upshot of 9225 4739

+\*17937279

+\*VAR Blackcap 9225

CE	BW	WW	YW	Milk	SC	SEN			
+0	+2.7	+74	+132	+35	+1.12	-26			
		10%	10%	4%					
CW	MARB	REA	FAT	SM	SW	SF	SG	SB	SC
+68	+.77	+.91	-.015	+68	+84	+110	+64	+174	+294
3%	25%	10%	20%		3%	3%	15%	3%	2%

Act BW  
71  
Adj WW  
780  
Adj YW  
1193

9538 is a long-made bull that is ultra-complete and displays as much rib and volume as any bull in the offering. This is a bull that will grab your attention sale day!



SG Payweight 9538 - Lot 8



SG Jet Black 9554 - Lot 9

**SEXTON GENETICS**  
**9**  
**SG Jet Black 9554**  
Birth Date: 2-13-2019 • Bull \*19559745 • Tat.: 9554

#\*Connealy Black Granite  
Bar R Jet Black 5063  
\*18389838  
Bar R Iris Anita 0113

#\*Connealy Consensus 7229  
#Eura Elga of Conanga 9109  
#Sitz Upward 307R  
Bar R Anita 7081

Act BW 72  
Adj WW 805  
Adj YW 1160

**HDSOK**  
+\*Quaker Hill Rampage 0A36  
Zebo Queen 623  
\*18586678  
+\*2 Bar Prediction 2182

#MCC Daybreak  
+\*QHF Blackcap 6E2 of 4V16 4355  
+GAR Prediction  
+2 Bar Mile High 9303

CED	BW	WW	YW	Milk	SC	SEN
+10	+1.3	+79	+141	+23	+88	-38
20%		3%	3%			

CW	MARB	REA	FAT	\$M	\$W	\$F	\$G	\$B	SC
+65	+50	+70	+0.24	+46	+77	+108	+45	+154	+246
5%					10%	4%		15%	25%

**Calving-Ease Recommended for use on Heifers.**  
The Jet Black progeny were very popular in our Spring 2020 sale topping the yearling division. When you analyze this calving-ease specialist, it is easy to see why. The Jet Blacks do it all; they come light at birth and explode in growth. They do it in a moderate package with lots of true muscle and body. Big time bull here!

**SEXTON GENETICS**  
**10**  
**SG Jet Black 9525**  
Birth Date: 2-12-2019 • Bull \*19559742 • Tat.: 9525

#\*Connealy Black Granite  
Bar R Jet Black 5063  
\*18389838  
Bar R Iris Anita 0113

#\*Connealy Consensus 7229  
#Eura Elga of Conanga 9109  
#Sitz Upward 307R  
Bar R Anita 7081

Act BW 72  
Adj WW 759  
Adj YW 1092

**HDSOK**  
+\*Wilks Hot Saw 4N28  
Zebo Queen 773  
\*18905461  
+\*CoX Lucy 293S A01X

#\*EXAR Denver 2002B  
+\*QHF Blackcap 6E2 of 4V16 4355  
#\*EXAR Upshot 0562B  
+\*Basin Lucy 293S

CED	BW	WW	YW	Milk	SC	SEN
+11	+1.2	+74	+134	+23	+152	-25
15%		10%	5%		15%	

CW	MARB	REA	FAT	\$M	\$W	\$F	\$G	\$B	SC
+58	+23	+61	+0.37	+53	+74	+107	+31	+138	+232
15%					15%	5%			

**Calving-Ease Recommended for use on Heifers.**  
9525 is a calving-ease bull that is moderate in his design yet does not sacrifice performance. If you want a sure fire heifer bull that you can use for several years, this Jet Black son will fit that bill.

**SEXTON GENETICS**  
**11**  
**SG Jet Black 9585**  
Birth Date: 2-20-2019 • Bull \*19571542 • Tat.: 9585

#\*Connealy Black Granite  
Bar R Jet Black 5063  
\*18389838  
Bar R Iris Anita 0113

#\*Connealy Consensus 7229  
#Eura Elga of Conanga 9109  
#Sitz Upward 307R  
Bar R Anita 7081

Act BW 70  
Adj WW 831  
Adj YW 1065

**HDSOK**  
LD Bismarck 0171  
Zebo Queen 312  
17674617  
Zebo Queen 1072

#\*SAV Bismarck 5682  
+LD Primrose 8437  
#\*EF Complement 8088  
EXG Blackcap 6247 PPC

CED	BW	WW	YW	Milk	SC	SEN
+14	+0	+69	+117	+28	+75	-14
4%	25%	15%	20%			

CW	MARB	REA	FAT	\$M	\$W	\$F	\$G	\$B	SC
+59	+65	+46	+0.47	+56	+81	+105	+47	+152	+253
10%					5%	10%		20%	20%

**Calving-Ease Recommended for use on Heifers.**  
9585 has the highest CED in the entire offering and is another big time calving-ease Jet Black son.



SG Jet Black 9525 - Lot 10



**Calving-Ease Recommended for use on Heifers.**  
 Elite calving-ease coupled with elite phenotype. This is a must-see set of Angus bulls if you are serious about producing high-end beef cattle.



**SG Rampage 9594 - Lot 12**

**SEXTON GENETICS**  
**12**  
**SG Rampage 9594**  
 Birth Date: 2-19-2019 • Bull 19559758 • Tat.: 9594

+\*Quaker Hill Rampage 0A36 #MCC Daybreak  
 +\*Hedgewood Isabel 3157 +\*QHF Blackcap 6E2 of4V16 4355  
 +\*EXAR Denver 2002B #Baldridge Waylon W34  
 #\*EXAR Upshot 0562B +\*HVR 528R Isabel 1278  
 +Exar Royal Lass 1067  
 #\*SS Objective T510 OT26  
 +2 Bar 6807 Traveler 5535

**Wilks Rampage 5242**  
 +\*18408341

**Zebo Queen 452**  
 +17961652  
 2 Bar Objective 7836

**Act BW 65**  
**Adj WW 796**  
**Adj YW 1186**

CED	BW	WW	YW	Milk	SC	\$EN
+14	+6	+63	+123	+29	+72	-25
4%			15%	20%		

CW	MARB	REA	FAT	\$M	\$W	\$F	\$G	\$B	\$C
+58	+1.03	+51	+0.18	+47	+67	+103	+68	+171	+269
15%	10%			25%	10%	10%	10%	4%	10%

**SEXTON GENETICS**  
**13**  
**SG Ramesses 9501**  
 Birth Date: 2-14-2019 • Bull 19574119 • Tat.: 9501

+\*Quaker Hill Rampage 0A36 #MCC Daybreak  
 \*Welytok Total 10 Erianna 3B2 +\*QHF Blackcap 6E2 of4V16 4355  
 #\*AAR Ten X 7008 SA  
 Quaker Hill Erianna 8T2

**Springfield Ramesses 6124**  
 +\*18746724

**Zebo Queen 564**  
 18261930  
 +BJ Pioneer 2062

#\*KG Solution 0018  
 #MOCCK Sure Shot  
 KG Rito Lady 8724  
 #SAV Pioneer 7301  
 +VNAR Isabel 7268

**Act BW 72**  
**Adj WW 795**  
**Adj YW 1182**

CED	BW	WW	YW	Milk	SC	\$EN
+10	+3	+66	+128	+30	+176	-21
20%		20%	10%	20%	5%	

CW	MARB	REA	FAT	\$M	\$W	\$F	\$G	\$B	\$C
+45	+1.14	+56	+0.09	+64	+74	+85	+74	+160	+272
	5%				15%		4%	10%	10%



**SG Ramesses 9501 - Lot 13**

**Calving-Ease Recommended for use on Heifers.**  
 A calving-ease bull with style! You will appreciate the true muscle shape and design this calving-ease specialist offers.

SEXTON GENETICS

14

**ACC Enhance 9036**

Birth Date: 1-26-2019 • Bull \*19373210 • Tat.: 9036

\*SydGen Exceed 3223

\*SydGen Googol

\*SydGen Forever Lady 1255

#\*SydGen Liberty GA 8627

#Fox Run Rita 9308

SydGen Rita 2618



\*Quaker Hill Rampage 0A36

#MCC Daybreak

\*QHF Blackcap 6E2 of 4V16 4355

#\*Rito 9M25 of Rita 5F56 Pred

+Maplecrest Barbara K9059

ACC Barbara 6021  
18397179

#ACC Barbara 2045

CED	BW	WW	YW	Milk	SC	SEN			
+7	+2.5	+83	+150	+29	+1.02	-33			
		2%	1%	20%					
CW	MARB	REA	FAT	\$M	\$W	\$F	\$G	\$B	\$C
+74	+0.70	+1.30	-.057	+58	+86	+119	+69	+189	+303
1%		1%	1%		2%	1%	10%	1%	1%

A big-spread Enhance son with a \$C of a +303.

SEXTON GENETICS

16

**GTF Inertia 1904**

Birth Date: 4-3-2019 • Bull \*19406997 • Tat.: 1904

\*GAR Momentum

#\*GAR Progress

+GAR Big Eye 1770

#\*GAR Prophet

\*GAR Daybreak 1521

GAR Inertia  
\*18636043

\*GAR Prophet 2984



#\*GAR Prophet

#CRA Bextor 872 5205 608

+GAR Objective 1885

#\*Summitcrest Complete 1P55

\*GAR Predestined 2358

GAR Prophet L76  
\*18699838

\*GAR Complete 901

CED	BW	WW	YW	Milk	SC	SEN			
+4	+1.8	+68	+122	+37	+0.83	-23			
		15%	15%	2%					
CW	MARB	REA	FAT	\$M	\$W	\$F	\$G	\$B	\$C
+51	+1.42	+0.77	+0.044	+72	+83	+91	+87	+178	+303
25%	1%	20%		20%	4%	25%	1%	2%	1%

The Inertias are popular and for good reason. Check out the figures this +303 \$C Inertia displays.

SEXTON GENETICS

15

**GTF Momentum 1902**

Birth Date: 2-4-2019 • Bull \*19405182 • Tat.: 1902

#\*GAR Progress

#\*GAR Predestined

\*GAR Objective 2345

#\*ALC Big Eye D09N

GAR Objective 3387

GAR Momentum  
\*17354145

+GAR Big Eye 1770



\*GAR 100X

#\*AAR Ten X 7008 SA

\*GAR 5050 New Design A91

\*GAR Sunrise

\*GAR Complete 1481

GAR 100X F277  
\*18825838

\*GAR Sunrise L215

CED	BW	WW	YW	Milk	SC	SEN			
+14	-1.8	+61	+102	+27	+0.72	-10			
4%		4%							
CW	MARB	REA	FAT	\$M	\$W	\$F	\$G	\$B	\$C
+36	+1.56	+1.13	-.056	+74	+74	+76	+106	+183	+311
1%		2%	1%	15%	15%		1%	2%	1%

Calving-Ease Recommended for use on Heifers.

Check out the figures on the calving-ease specialist! Double-digit CED, negative BW, and a +311 \$C.

SEXTON GENETICS

17

**MJM K263 912**

Birth Date: 1-26-2019 • Bull \*19477290 • Tat.: 912

#\*GAR Prophet

#CRA Bextor 872 5205 608

+GAR Objective 1885

#\*GAR New Design 5050

+Chair Rock Objective 7042

GAR Prophet K263  
\*17799492

\*Chair Rock 5050 GAR 1131



\*EXAR Stud 4658B

#\*AAR Ten X 7008 SA

\*BoBo Rita 1559

\*GAR Advance

+2 Bar Daybreak 2056

2 Bar Stud 7203  
\*18809902

\*2 Bar Advance E45

CED	BW	WW	YW	Milk	SC	SEN			
+9	+0.9	+75	+136	+27	-.43	-15			
		10%	4%						
CW	MARB	REA	FAT	\$M	\$W	\$F	\$G	\$B	\$C
+62	+0.95	+0.77	+0.025	+79	+83	+103	+67	+170	+299
10%	15%	20%		10%	4%	10%	10%	5%	2%

Calving-Ease Recommended for use on Heifers.

Calving-ease with +299 \$C!



MJM K263 912 - Lot 17

SEXTON GENETICS

18

**MJM K263 913**

Birth Date: 2-11-2019 • Bull 19473364 • Tat.: 913

#+\*GAR Prophet  
**GAR Prophet K263**  
 +\*17799492

#CRA Bextor 872 5205 608  
 +GAR Objective 1885  
 #+GAR New Design 5050  
 +Chair Rock Objective 7042



3F Final Product 2720

#\*Connealy Final Product  
 JAF Objective 823  
 #\*OCC Missing Link 830M  
 Callaways Blackbird 0782

**Zebo Queen 4049**  
 18133345

EF Blackbird 9467

Act BW  
62  
 Adj WW  
718  
 Adj YW  
1179

CED	BW	WW	YW	Milk	SC	SEN			
+5	+8	+74	+141	+28	-.02	-34			
		10%	3%						
CW	MARB	REA	FAT	SM	SW	SF	SG	SB	SC
+69	+41	+84	-.021	+40	+76	+116	+47	+163	+251
3%		15%	15%		10%	2%		10%	25%

Moderate birth, big spread K263 son with a tremendous YW EPD.

SEXTON GENETICS

20

**SG Monumental 9502**

Birth Date: 2-5-2019 • Bull \*19566286 • Tat.: 9502

3F Epic 4631  
**EXAR Monumental 6056B**  
 \*18379347

\*Varilek Product 2010 04  
 Zebo Queen 1072  
 #\*AAR Ten X 7008 SA  
 +\*FWY Rita C085



#\*EXAR Upshot 0562B

#Sitz Upward 307R  
 #+EXAR Barbara T020  
 #\*SS Objective T510 0T26  
 +GAR Predestined N665

**CoX 9212 Blackcap 5001**  
 +\*18173461

\*SandPoint Blackcap 9212

Act BW  
66  
 Adj WW  
789  
 Adj YW  
1131

CED	BW	WW	YW	Milk	SC	SEN			
+10	-.8	+57	+95	+25	+1.19	-15			
		15%			25%				
CW	MARB	REA	FAT	SM	SW	SF	SG	SB	SC
+43	+96	+47	+054	+47	+64	+83	+61	+144	+234
	15%						15%	25%	

Calving-Ease Recommended for use on Heifers.

Negative BW EPD Monumental son.

SEXTON GENETICS

19

**MJM K263 914**

Birth Date: 3-5-2019 • Bull \*19473365 • Tat.: 914

#+\*GAR Prophet  
**GAR Prophet K263**  
 +\*17799492

#CRA Bextor 872 5205 608  
 +GAR Objective 1885  
 #+GAR New Design 5050  
 +Chair Rock Objective 7042



#\*AAR Ten X 7008 SA

#\*Mytty In Focus  
 #AAR Lady Kelton 5551  
 #\*GAR Predestined  
 +\*Rita 7061 of Rita 5F56 Obj

**FF Rita 4X45 of OM88 Ten X**  
 +\*17940494

\*Rita OM88 of Rita 7061 PRED

Act BW  
62  
 Adj WW  
725  
 Adj YW  
1138

CED	BW	WW	YW	Milk	SC	SEN			
+6	+1.3	+77	+137	+24	-.12	-27			
		4%	4%						
CW	MARB	REA	FAT	SM	SW	SF	SG	SB	SC
+45	+1.48	+66	-.006	+57	+78	+78	+92	+171	+279
	1%				10%		1%	4%	10%

The #1 Marbling EPD bull in the entire offering.

SEXTON GENETICS

21

**SG Monumental 9551**

Birth Date: 1-27-2019 • Bull \*19559744 • Tat.: 9551

3F Epic 4631  
**EXAR Monumental 6056B**  
 \*18379347

\*Varilek Product 2010 04  
 Zebo Queen 1072  
 #\*AAR Ten X 7008 SA  
 +\*FWY Rita C085



\*HA Cowboy Up 5405

\*HA Outside 3008  
 #\*HA Blackcap Lady 1602  
 #\*ALC Big Eye D09N  
 Rck P 5571 Retail Prod 8067

**Zebo Queen 784**  
 18905472

Zebo Queen 002

Act BW  
73  
 Adj WW  
755  
 Adj YW  
1128

CED	BW	WW	YW	Milk	SC	SEN			
+9	+1.4	+64	+115	+23	+1.57	-24			
		25%	25%		10%				
CW	MARB	REA	FAT	SM	SW	SF	SG	SB	SC
+37	+67	+35	+010	+49	+63	+72	+50	+122	+207

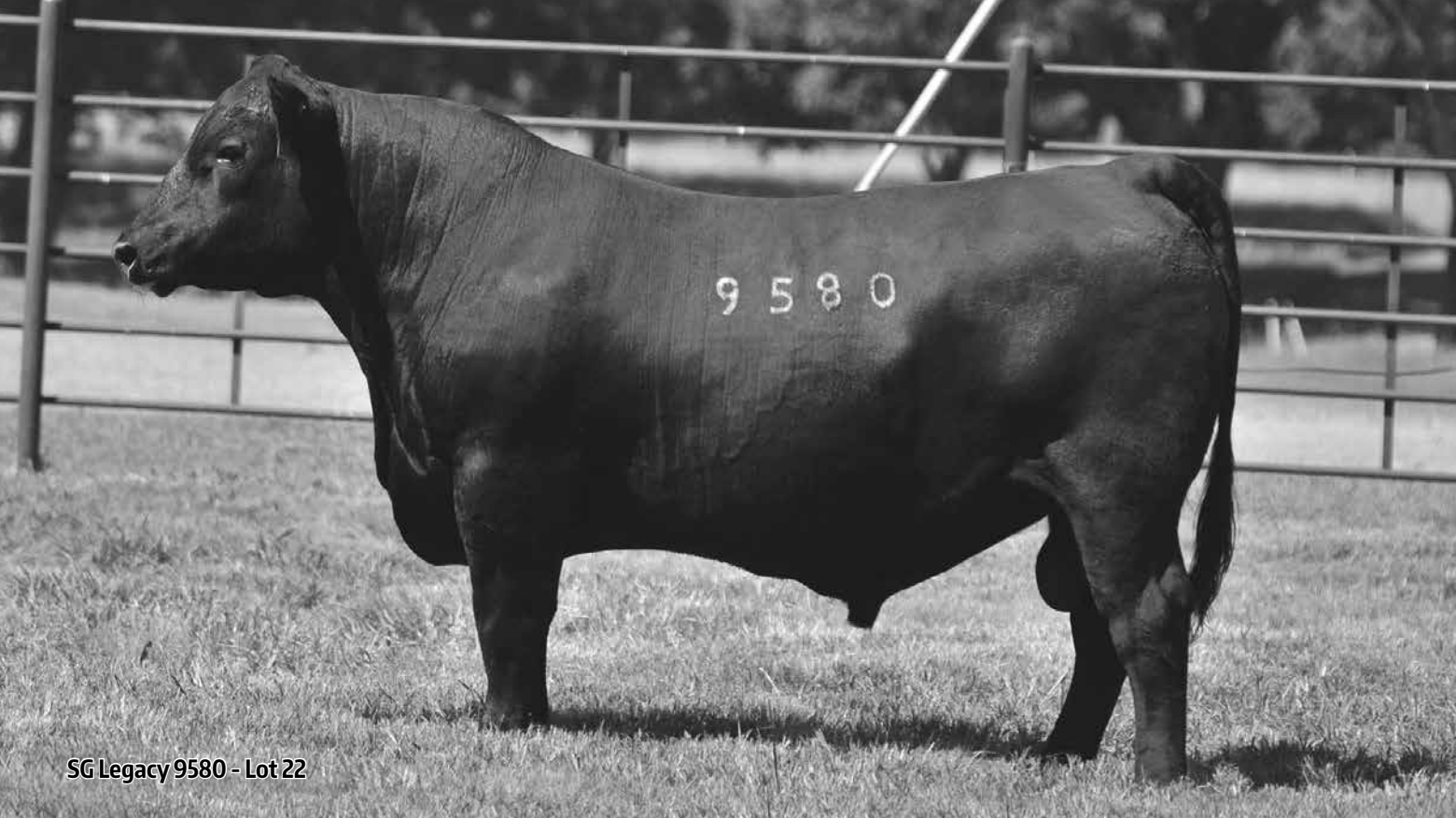
Calving-Ease Recommended for use on Heifers.

The Monumental sons have been extremely popular in previous sales. Calving-ease and performance with style.




**EXAR Monumental 6056B - Sire**  
 of Lots 20 and 21.

*Kate Roberts*



SG Legacy 9580 - Lot 22

**SEXTON GENETICS**  
**22**  
**SG Legacy 9580**   
Birth Date: 3-2-2019 • Bull 19559756 • Tat.: 9580

**EXAR Legacy 7206B**  
\*18728169

**HOSOK**  
Mytty Upward 144X  
Zebo Queen 338  
#17674640

+\*SydGen Legacy 2813  
+\*H MS Jackie 4031 Et

#\*SydGen Trust 6228  
+SydGen Heroine 9808  
#\*AAR Ten X 7008 SA  
\*Schafer N5259 Jackie Y159


#Sitz Upward 307R  
Mytty Dixie Erica 805  
#\*GAR Predestined  
GAR Retail Product 1712

Act BW	67
Adj WW	771
Adj YW	1145

CED	BW	WW	YW	Milk	SC	SEN
+11	-.4	+53	+99	+31	+.04	-11
15%	20%			15%		

CW	MARB	REA	FAT	SM	SW	SF	SG	SB	SC
+33	+.92	+.67	-.022	+56	+64	+78	+68	+146	+245
	15%		15%				10%	25%	

Calving-Ease Recommended for use on Heifers.  
A high volume calving-ease bull with a killer look.

**SEXTON GENETICS**  
**23**  
**SG Successor 9579**   
Birth Date: 3-19-2019 • Bull 19566294 • Tat.: 9579

**3F Successor 6757**  
18612884

**HOSOK**  
CoX Rita 8HF6 Z04T  
#\*17315252

\*EXAR Successor 4535B  
Zebo Queen 357

#\*EXAR Denver 2002B  
Exar Erica 8156  
#\*EF Complement 8088  
+Zebo Queen 089


#Basin Franchise P142  
+EF Everelda Entense 6117  
#TC Total 410  
+\*Rita 5EX2 of 2536 Example

Act BW	68
Adj WW	745
Adj YW	1169

CED	BW	WW	YW	Milk	SC	SEN
+7	+1.5	+64	+115	+24	1+.62	-19
		25%	25%			

CW	MARB	REA	FAT	SM	SW	SF	SG	SB	SC
1+.54	1+.77	1+.61	1+.031	+56	+62	+104	+56	+160	+264
20%	25%					10%	25%	10%	15%

Big ribbed, big volume with eye-appeal.

**SEXTON GENETICS**  
**24**  
**SG Monumental 9522**   
Birth Date: 12-22-2018 • Bull +\*19643375 • Tat.: 9522

**EXAR Monumental 6056B**  
\*18379347

**HOSOK**  
Zebo Queen 4007  
+\*18137072

3F Epic 4631  
\*FWY 7008 of C085 4029

\*Varilek Product 2010 04  
Zebo Queen 1072  
#\*AAR Ten X 7008 SA  
+\*FWY Rita C085


#\*AAR Ten X 7008 SA  
#\*Mytty In Focus  
#AAR Lady Kelton 5551  
#\*Summitcrest Complete 1P55  
+GAR 1407 New Design 652

Act BW	68
Adj WW	750
Adj YW	1217

CED	BW	WW	YW	Milk	SC	SEN
+1	+2.5	+81	+137	+28	+.98	-35
		2%	4%			

CW	MARB	REA	FAT	SM	SW	SF	SG	SB	SC
+64	+1.26	+.77	+.046	+48	+84	+97	+80	+177	+278
5%	3%	20%			3%	15%	2%	3%	10%

A big ribbed, big scrotal high performing Monumental son.

**SEXTON GENETICS**  
**25**  
**SG Dually 9586**   
Birth Date: 2-14-2019 • Bull 19574111 • Tat.: 9586

**DL Dually**  
\*18608253

**HOSOK**  
Zebo Queen 233  
17384262

DL Sonic 444  
\*DL Incentive 2103

#\*KG Solution 0018  
DL Barbara 792  
DL Incentive 228  
DL Karama 39

#HA Program 5652  
+Goode Focus 384

\*HA Future Direction 3540  
+HA Blackcap Lady 2782  
#SAF Focus of ER  
GAR Explosion 2088

Act BW	74
Adj WW	837
Adj YW	1231

CED	BW	WW	YW	Milk	SC	SEN
+5	+1.6	+83	+135	+29	+.50	-31
		2%	5%	20%		

CW	MARB	REA	FAT	SM	SW	SF	SG	SB	SC
+52	+.49	+.44	+.056	+75	+92	+72	+39	+111	+219
25%				15%	1%				

High-performing bull with and adj. WW of 837 lbs.

SEXTON GENETICS

26

# SG Jet Black 910

Birth Date: 3-22-2019 • Bull \*19680144 • Tat.: 910

#\*Connealy Black Granite  
Bar R Jet Black 5063  
\*18389838 Bar R Iris Anita 0113

#\*Connealy Consensus 7229  
#Eura Elga of Conanga 9109  
#Sitz Upward 307R  
Bar R Anita 7081

Act BW 71  
Adj WW 672  
Adj YW 1086

ANGUS GS

#\*Connealy Impression  
Deer Valley Henrietta 2182  
\*17240506 +Sitz Henrietta Pride 639T

#Connealy Reflection  
Pearl Pammy of Conanga 194  
#\*Connealy Onward  
Sitz Henrietta Pride 81M

CED	BW	WW	YW	Milk	SC	SEN			
+12	+1.1	+67	+110	+25	+1.58	-13			
10%		20%		10%					
CW	MARB	REA	FAT	SM	SW	SF	SG	SB	SC
+55	+21	+1.01	-.042	+69	+73	+91	+41	+132	+240
20%		4%	3%	25%	15%	25%			

Calving-Ease Recommended for use on Heifers.  
Calving-ease with added performance.



Bar R Jet Black 5063 -Sire of Lot 26.

SEXTON GENETICS

27

# SG Sema 9528

Birth Date: 2-14-2019 • Bull \*19559747 • Tat.: 9528

\*EXAR SEMA 2131B  
Exar Sema 1056B  
\*18423218 EXAR Rita 2373

#\*EXAR Upshot 0562B  
Basin Joy 566T  
\*EXAR Duvall 0461B  
Exar Rita 9528

Act BW 80  
Adj WW 789  
Adj YW 1144

HDSOK

\*VAR Generation 2100  
Zebo Queen 6250  
\*18787026 #+\*Maplecrest Eva 2107

#\*Connealy Consensus 7229  
\*Sandpoint Blackbird 8809  
#\*Summitcrest Complete 1P55  
Maplecrest Eva 7010

CED	BW	WW	YW	Milk	SC	SEN			
+5	+3.6	+80	+150	+33	+89	-46			
		3%	1%	10%					
CW	MARB	REA	FAT	SM	SW	SF	SG	SB	SC
+72	+73	+93	-.003	+52	+79	+128	+61	+189	+297
2%		10%			10%	1%	15%	1%	2%

Check out the WW, YW and \$C!

SEXTON GENETICS

30

# SG Black Onyx 9548

Birth Date: 1-28-2019 • Bull \*19566290 • Tat.: 9548

#\*Connealy Black Granite  
QHf WWA Black Onyx 5Q11  
\*18463791 +\*Wilks Blackcap 0D82

#\*Connealy Consensus 7229  
#Eura Elga of Conanga 9109  
#MCC Daybreak  
+\*QHf Blackcap 6E2 of4V16 4355

HDSOK

\*Quaker Hill Rampage 0A36  
Zebo Queen 7315  
\*18834157 +\*2 Bar 454 New Day 1701

#MCC Daybreak  
+\*QHf Blackcap 6E2 of4V16 4355  
#\*B/R New Day 454  
+2 Bar Mile High 9303

CED	BW	WW	YW	Milk	SC	SEN			
+9	+1.2	+73	+126	+32	+1.15	-28			
		10%	10%	10%					
CW	MARB	REA	FAT	SM	SW	SF	SG	SB	SC
+53	+70	+91	+0.006	+56	+85	+91	+59	+149	+249
20%		10%			3%	25%	20%	20%	25%

Calving-Ease Recommended for use on Heifers.  
Genetic diversity in a calving-ease package.

SEXTON GENETICS

28

# SG Conan 9535

Birth Date: 2-23-2019 • Bull 19559748 • Tat.: 9535

\*HA Cowboy Up 5405  
EXAR Conan 1107B  
\*18717674 +\*FWY 028 of 7010 3522

\*HA Outside 3008  
#\*HA Blackcap Lady 1602  
#\*Connealy Capitalist 028  
Maplecrest Eva 7010

Act BW 72  
Adj WW 814  
Adj YW 1384

HDSOK

#\*EF Complement 8088  
Zebo Queen 574  
#18238509 Zebo Queen 364

#Basin Franchise P142  
+EF Everelda Entense 6117  
#HA Program 5652  
Callaways Ideal 0700

CED	BW	WW	YW	Milk	SC	SEN			
+9	+9	+74	+141	+35	+1.90	-46			
		10%	3%	4%	3%				
CW	MARB	REA	FAT	SM	SW	SF	SG	SB	SC
+52	+52	+20	+0.028	+39	+82	+102	+39	+142	+223
25%					4%	10%			

Calving-Ease Recommended for use on Heifers.  
Check out the individual performance figures that match his EPD profile.

SEXTON GENETICS

31

# SG Successor 9588

Birth Date: 3-1-2019 • Bull \*19566295 • Tat.: 9588

\*EXAR Successor 4535B  
3F Successor 6757  
18612884 Zebo Queen 357

#\*EXAR Denver 2002B  
Exar Erica 8156  
#\*EF Complement 8088  
+Zebo Queen 089

HDSOK

#\*B/R New Day 454  
2 Bar 454 New Day 1701  
\*16898927 +2 Bar Mile High 9303

+Boyd New Day 8005  
B/R Ruby 1224  
#\*Riverbend Mile High 3718  
2 Bar Objective 5533

CED	BW	WW	YW	Milk	SC	SEN			
+13	-1	+56	+94	+27	+29	-6			
10%	25%								
CW	MARB	REA	FAT	SM	SW	SF	SG	SB	SC
+35	+76	+68	-.023	+71	+67	+68	+57	+125	+233
25%				20%	25%		20%		

Calving-Ease Recommended for use on Heifers.  
Superior calving-ease genetics.

SEXTON GENETICS

29

# SG Monumental 9534 [ OHP ]

Birth Date: 2-10-2019 • Bull 19559743 • Tat.: 9534

3F Epic 4631  
EXAR Monumental 6056B  
\*18379347 \*FWY 7008 of C085 4029

\*Varilek Product 2010 04  
Zebo Queen 1072  
#\*AAR Ten X 7008 SA  
+\*FWY Rita C085

Act BW 68  
Adj WW 791  
Adj YW 1138

HDSOK

\*Deer Valley CC&7 2123  
VNAR Freda 5002  
18040940 +VNAR Freda 6196

#\*SydGen CC&7  
#\*\*Werner Lady 919  
#\*B/R New Frontier 095  
+VF 722 Landmark Freda 5127

CED	BW	WW	YW	Milk	SC	SEN			
+10	-1.3	+62	+116	+32	+1.33	-16			
20%	10%		25%	10%	20%				
CW	MARB	REA	FAT	SM	SW	SF	SG	SB	SC
+46	+80	+56	+0.045	+70	+77	+82	+56	+138	+249
	25%			25%	10%		25%		25%

Calving-Ease Recommended for use on Heifers.  
Another do-it-all Monumental son.

SEXTON GENETICS

32

# SG Cowboy Up 9504

Birth Date: 2-5-2019 • Bull 19566287 • Tat.: 9504

\*HA Outside 3008  
HA Cowboy Up 5405  
\*18286467 #\*HA Blackcap Lady 1602

#\*KG Solution 0018  
#\*HA Ever Lady 1575  
#Sitz Upward 307R  
HA Blackcap Lady 5515

HDSOK

\*Varilek Product 2010 04  
Zebo Queen 573  
18238508 +SQ 32W of 3191

#\*Connealy Final Product  
Varilek Pearl 0006 014  
#TC Total 410  
+Evans Blackcap 3191

CED	BW	WW	YW	Milk	SC	SEN			
+7	+1.4	+75	+134	+17	+87	-41			
		10%	5%						
CW	MARB	REA	FAT	SM	SW	SF	SG	SB	SC
+44	+0	+54	-.041	+34	+63	+78	+25	+103	+168
			3%						

A big-bodied, easy-fleshing Cowboy Up son.

SEXTON GENETICS

**33**

# SG Generation 9558

Birth Date: 2-25-2019 • Bull \*19559753 • Tat.: 9558

PF Generation 7054  
+\*18754476

\*VAR Generation 2100  
+\*PF 7008 Rita 3531

#\*Connealy Consensus 7229  
+\*Sandpoint Blackbird 8809  
#\*AAR Ten X 7008 SA  
+\*EXAR Rita U049



\*Varilek Product 2010 04

#\*Connealy Final Product  
Varilek Pearl 0006 014  
#\*EGB 1680 Precision 1023  
+Toebben Lucy C436

Zebo Queen 685  
18594591

RB Lucy 801

Act BW 70  
Adj WW 748  
Adj YW 1078

CED	BW	WW	YW	Milk	SC	SEN			
+6	+4	+66	+128	+19	+133	-33			
		20%	10%		20%				
CW	MARB	REA	FAT	SM	SW	SF	SG	SB	SC
+64	+49	+58	-037	+27	+56	+119	+48	+168	+245
5%			4%			1%		5%	

A very moderate birth bull that offers added performance.

SEXTON GENETICS

**34**

# SG Dually 9584

Birth Date: 2-9-2019 • Bull 19574110 • Tat.: 9584

DL Dually  
\*18608253

DL Sonic 444  
\*DL Incentive 2103

#\*KG Solution 0018  
DL Barbara 792  
DL Incentive 228  
DL Karma 39



#HA Program 5652

\*HA Future Direction 3540  
+HA Blackcap Lady 2782  
#\*GAR Predestined  
Garld Expectation 115

Zebo Queen 243  
#17384270

Goode Predestined 620

Act BW 70  
Adj WW 847  
Adj YW 1177

CED	BW	WW	YW	Milk	SC	SEN			
+5	+1.7	+74	+131	+15	+94	-23			
		10%	10%						
CW	MARB	REA	FAT	SM	SW	SF	SG	SB	SC
+49	+96	+54	+018	+59	+62	+83	+65	+148	+251
5%	15%						10%	20%	25%

The Dually sons are stout, powerful, and big-time Beef Bulls.

SEXTON GENETICS

**35**

# SG Total 95

Birth Date: 3-2-2019 • Bull 19574686 • Tat.: 9539

TC Total 410  
#14844711

#Bon View New Design 208  
+TC Erica Eileen 2047

#B/R New Design 036  
#Bon View Erica 443  
#\*Twin Valley Precision E161  
#+TC Erica Eileen 5116



#\*Connealy Black Granite

#\*Connealy Consensus 7229  
#Eura Elga of Conanga 9109  
#TC Total 410  
+GAR 1407 New Design 1254

Zebo Queen 579  
18257340

+K BAR Total 2209

Act BW 75  
Adj WW 796  
Adj YW 1191

CED	BW	WW	YW	Milk	SC	SEN			
+0	+3.9	+90	+155	+13	+29	-46			
		1%	1%						
CW	MARB	REA	FAT	SM	SW	SF	SG	SB	SC
+81	+54	+71	-018	+21	+65	+134	+51	+184	+260
1%			15%			1%		2%	15%

Older proven-genetic lineage.



DL Dually - Sire of Lot 34.



TEX Playbook 5437 - Sire of Lot 36.

SEXTON GENETICS

**36**

# SG Playbook 906

Birth Date: 2-12-2019 • Bull \*19680142 • Tat.: 906

TEX Playbook 5437  
+\*18414912

#\*Basin Payweight 1682  
+\*Rita 1C43 of 9M26 Complete

#\*Basin Payweight 0065  
21AR O Lass 7017  
#\*Summitcrest Complete 1P55  
+\*Rita 9M26 of Rita 5F56 Pred



Deer Valley Rita 5383  
+\*18213282

#\*Plattmere Weigh Up K360  
+\*Deer Valley Rita 3167

#Sitz Upward 307R  
#Barbara of Plattmere 337  
#\*AAR Ten X 7008 SA  
+Deer Valley Rita 9927

Act BW 82  
Adj WW 789  
Adj YW 999

CED	BW	WW	YW	Milk	SC	SEN			
+6	+2.7	+83	+147	+34	+1.93	-32			
		2%	2%	5%	3%				
CW	MARB	REA	FAT	SM	SW	SF	SG	SB	SC
+76	+77	+60	+033	+75	+92	+122	+56	+178	+306
1%	25%			15%	1%	1%	25%	2%	1%

A big-time performance direct son of Playbook. Check out the EPD profile!

SEXTON GENETICS

**37**

# SG Rampage 9591

Birth Date: 2-26-2019 • Bull \*19559757 • Tat.: 9591

Wilks Rampage 5242  
+\*18408341

+\*Quaker Hill Rampage 0A36  
+\*Hedgewood Isabel 3157

#MCC Daybreak  
+\*QHF Blackcap 6E2 of 4V16 4355  
#\*Baldrige Waylon W34  
+\*HVR 528R Isabel 1278



#\*EF Complement 8088

#Basin Franchise P142  
+EF Everelda Entense 6117  
#\*B/R Ambush 28  
B/R Ruby 9114

SJH Complement of 9042 4525  
+\*17727806

+\*SH Ambush of Ruby 9114 9042

Act BW 71  
Adj WW 831  
Adj YW 1237

CED	BW	WW	YW	Milk	SC	SEN			
+7	+2.7	+84	+145	+24	+34	-30			
		1%	2%						
CW	MARB	REA	FAT	SM	SW	SF	SG	SB	SC
+68	+96	+51	+056	+68	+82	+110	+61	+172	+291
3%	15%				4%	3%	15%	4%	3%

Performance with tremendous rib shape and design.

SEXTON GENETICS

**38**

# SG Rampage 9607

Birth Date: 3-20-2019 • Bull 19566297 • Tat.: 9607

Wilks Rampage 5242  
+\*18408341

+\*Quaker Hill Rampage 0A36  
+\*Hedgewood Isabel 3157

#MCC Daybreak  
+\*QHF Blackcap 6E2 of 4V16 4355  
#\*Baldrige Waylon W34  
+\*HVR 528R Isabel 1278

Zebo Queen 430  
17961612

#\*EF Complement 8088

#Basin Franchise P142  
+EF Everelda Entense 6117  
#HA Program 5652  
+Goode Focus 384

Act BW 74  
Adj WW 854  
Adj YW 1139

CED	BW	WW	YW	Milk	SC	SEN			
+6	+2.4	+70	+112	+29	+27	-26			
		15%	20%						
CW	MARB	REA	FAT	SM	SW	SF	SG	SB	SC
+52	+43	+47	+067	+54	+76	+82	+36	+118	+207
25%					10%				

Spread with added volume.

**SEXTON GENETICS**  
**39**  
**SG Rampage 9601**  
 Birth Date: 3-1-2019 • Bull \*19566296 • Tat.: 9601

+\*Quaker Hill Rampage 0A36 #MCC Daybreak  
 +\*Wilks Rampage 5242 +\*QHF Blackcap 6E2 of 4V16 4355  
 +\*18408341 +\*Hedgewood Isabel 3157 #\*Baldrige Waylon W34  
 +\*HVR 528R Isabel 1278

**Act BW 75**  
**Adj WW 786**  
**Adj YW 1116**

CED	BW	WW	YW	Milk	SC	SEN			
+6	+1.9	+46	+86	+29	+87	-13			
20%									
CW	MARB	REA	FAT	SM	SW	SF	SG	SB	SC
+44	+27	+99	-0.29	+42	+49	+89	+43	+132	+213
		5%	10%						

Moderate birth with excellent performance.

**SEXTON GENETICS**  
**40**  
**SG Index 914**  
 Birth Date: 4-9-2019 • Bull \*19471610 • Tat.: 914

+\*VAR Index 3282 #\*GAR Ingenuity  
 3F Index 7975 +\*Sandpoint Blackbird 8809  
 18944794 KLR Lady 3431 #\*AAR Ten X 7008 SA  
 KLR Lady 1451

**Act BW 70**  
**Adj WW 701**  
**Adj YW 1101**

CED	BW	WW	YW	Milk	SC	SEN			
+4	+1.4	+51	+84	+19	+88	+1			
15%									
CW	MARB	REA	FAT	SM	SW	SF	SG	SB	SC
+27	+45	+73	-0.29	+64	+50	+71	+48	+119	+218
		25%	10%						

Solid across the board with excellent performance data.

**SEXTON GENETICS**  
**41**  
**SG Monumental 9542**  
 Birth Date: 1-29-2019 • Bull \*19566289 • Tat.: 9542

3F Epic 4631 #\*Varilek Product 2010 04  
 EXAR Monumental 6056B Zebu Queen 1072  
 \*18379347 \*FWY 7008 of C085 4029 #\*AAR Ten X 7008 SA  
 \*FWY Rita C085

**Act BW 73**  
**Adj WW 827**  
**Adj YW 1200**

CED	BW	WW	YW	Milk	SC	SEN			
+0	+2.8	+87	+150	+27	+1.56	-33			
1%									
CW	MARB	REA	FAT	SM	SW	SF	SG	SB	SC
+62	+90	+68	-.001	+58	+88	+91	+66	+156	+260
		10%	15%	2%	25%	10%	15%	15%	

Owned by Zybach Angus  
 Check out the performance and EPD profile on this Monumental son.

**SEXTON GENETICS**  
**42**  
**SG Cowboy 9505**  
 Birth Date: 3-23-2019 • Bull \*19566292 • Tat.: 9505

\*HA Cowboy Up 5405 #\*HA Outside 3008  
 Sweet T CD Cowboy 706 #\*HA Blackcap Lady 1602  
 \*18938507 \*Deer Valley Henrietta 401 #\*EXAR Denver 2002B  
 \*Deer Valley Henrietta 2182

**Act BW 75**  
**Adj WW 836**  
**Adj YW 1110**

CED	BW	WW	YW	Milk	SC	SEN			
+3	+4.1	+77	+124	+15	+83	-28			
4%									
CW	MARB	REA	FAT	SM	SW	SF	SG	SB	SC
+46	+09	+62	-0.060	+48	+59	+85	+32	+117	+200
		1%							

Power with added style.

**SEXTON GENETICS**  
**43**  
**SG Energy 923**  
 Birth Date: 3-17-2019 • Bull \*19419893 • Tat.: 923

+\*EXAR PowerSource 4723B #\*EXAR Denver 2002B  
 EXAR Energy 6519B +\*EXAR Lucy 2944  
 \*18374430 #EXAR Victoria 2726 Connealy Right Direction 3499  
 SCR Victoria 80748

**Act BW 85**  
**Adj WW 742**  
**Adj YW 1104**

CED	BW	WW	YW	Milk	SC	SEN			
+9	+1.9	+67	+113	+19	-.12	-11			
20%									
CW	MARB	REA	FAT	SM	SW	SF	SG	SB	SC
+48	+58	+26	+0.053	+81	+64	+98	+41	+139	+261
		5%		25%	15%				

Strong maternal presence in a high-volume moderate package.

**SEXTON GENETICS**  
**44**  
**SG Insight 901 [ OHP ]**  
 Birth Date: 1-19-2019 • Bull 19731838 • Tat.: 901

#\*SAV Brilliance 8077 #+SAV Bismarck 5682  
 PVF Insight 0129 SAV Blackcap May 5270  
 #\*16805884 +\*PVF Missie 790 #\*PVF New Horizon 001  
 PVF Miss Raptor 024

**Act BW 73**  
**Adj WW N/A**  
**Adj YW 1272**

CED	BW	WW	YW	Milk	SC	SEN			
+0	+2.7	+64	+124	+17	+51	-27			
25%									
CW	MARB	REA	FAT	SM	SW	SF	SG	SB	SC
+62	+09	+91	+0.006	+34	+47	+114	+31	+144	+221
		10%	10%	25%	15%	2%	31	25%	

Performance with style! The Insight progeny sons are in high demand each year.

**SEXTON GENETICS**  
**45**  
**SG Rampage 9511**  
 Birth Date: 4-10-2019 • Bull \*19580363 • Tat.: 9511

+\*Quaker Hill Rampage 0A36 #MCC Daybreak  
 XLAR 5741H Rampage X 6108 +\*QHF Blackcap 6E2 of 4V16 4355  
 \*18420260 +DRMCTR 111 Rita 6108 #\*Rito 111 of 2536 Rito 616  
 +DRMCTR 2908s Design 2B02

**Act BW 72**  
**Adj WW 772**  
**Adj YW 1154**

CED	BW	WW	YW	Milk	SC	SEN			
+7	+2.9	+76	+144	+28	+1.10	-37			
5%									
CW	MARB	REA	FAT	SM	SW	SF	SG	SB	SC
+63	+81	+1.22	-.074	+36	+73	+113	+75	+187	+279
		10%	20%	1%	15%	2%	4%	1%	10%

Owned by Zybach Angus  
 A high-performing bull with and big time EPD profile.

**SEXTON GENETICS**  
**46**  
**SG Conan 9536**  
 Birth Date: 2-21-2019 • Bull \*19559749 • Tat.: 9536

\*HA Cowboy Up 5405 #\*HA Outside 3008  
 EXAR Conan 1107B #\*HA Blackcap Lady 1602  
 \*18717674 +\*FWY 028 of 7010 3522 #\*Connealy Capitalist 028  
 Maplecrest Eva 7010

**Act BW 80**  
**Adj WW 806**  
**Adj YW 1081**

CED	BW	WW	YW	Milk	SC	SEN			
-6	+3.4	+72	+131	+25	+1.97	-38			
10%									
CW	MARB	REA	FAT	SM	SW	SF	SG	SB	SC
+48	+32	+14	+0.009	+20	+64	+90	+31	+120	+176
					25%				

High performing with an 800 lb. plus adj. WW.

SEXTON GENETICS

47

**SG Conan 9537**

Birth Date: 3-2-2019 • Bull \*19559750 • Tat.: 9537

\*HA Cowboy Up 5405  
#EXAR Conan 1107B  
+\*18717674\*HA Outside 3008  
#\*HA Blackcap Lady 1602  
#\*Connealy Capitalist 028  
Maplecrest Eva 7010#\*EXAR Denver 2002B  
CoX 09B9 Ideal 5096  
+\*18168602#\*EXAR Upshot 0562B  
+Exar Royal Lass 1067  
#\*SS Objective T510 OT26  
\*Callaways Ideal 1031Act BW  
73  
Adj WW  
742  
Adj YW  
1072

CED	BW	WW	YW	Milk	SC	SEN			
+2	+2.8	+66	+119	+27	+39	-29			
		20%	20%						
CW	MARB	REA	FAT	SM	SW	SF	SG	SB	SC
+50	+34	+87	-029	+31	+64	+101	+45	+145	+219
		15%	10%			10%		25%	

Strong performance with a solid EPD profile.

SEXTON GENETICS

49

**SG Rampage 9595**

Birth Date: 3-28-2019 • Bull \*19571702 • Tat.: 9595

Wilks Rampage 5242  
+\*18408341\*Quaker Hill Rampage 0A36  
+\*Hedgewood Isabel 3157#MCC Daybreak  
+\*QHF Blackcap 6E2 of 4V16 4355  
#\*Baldridge Waylon W34  
+\*HVR 528R Isabel 1278Vintage Blackcap 4009  
+\*17762475#\*VAR Reserve 1111  
+\*Exar Blackcap 5909#\*B/R New Day 454  
+\*Sandpoint Blackbird 8809  
#\*GAR Predestined  
+\*GAR New Design 1200Act BW  
72  
Adj WW  
842  
Adj YW  
1148

CED	BW	WW	YW	Milk	SC	SEN			
+8	+3.2	+73	+125	+23	+1.03	-23			
		10%	15%						
CW	MARB	REA	FAT	SM	SW	SF	SG	SB	SC
+46	+1.02	+83	+007	+71	+68	+81	+72	+153	+269
		10%	15%	20%	20%		5%	15%	10%

Check out the individual performance to go along with his EPD profile.

SEXTON GENETICS

48

**SG Cowboy 9583**

Birth Date: 3-1-2019 • Bull 19559746 • Tat.: 9583

Sweet T CD Cowboy 706  
+\*18938507\*HA Cowboy Up 5405  
#Deer Valley Henrietta 401\*HA Outside 3008  
#\*HA Blackcap Lady 1602  
#\*EXAR Denver 2002B  
+\*Deer Valley Henrietta 2182#\*AAR Ten X 7008 SA  
Zebo Queen 4045  
18134830#\*Mytty In Focus  
#AAR Lady Kelton 5551  
#\*SQ Credence 675  
+LD Dixie Erica 7153Act BW  
72  
Adj WW  
869  
Adj YW  
1093

CED	BW	WW	YW	Milk	SC	SEN			
+7	+1.8	+80	+127	+17	+91	-24			
		3%	10%						
CW	MARB	REA	FAT	SM	SW	SF	SG	SB	SC
+47	+51	+30	+017	+47	+75	+81	+41	+122	+205
					10%				

Solid across the board with a moderate BW and high WW and YW EPD.

SEXTON GENETICS

50

**SG Whitlock 9566**

Birth Date: 3-23-2019 • Bull \*19559755 • Tat.: 9566

BV Whitlock 7100  
+\*18911439#\*S Whitlock 179  
+\*Basin Lucy 262S#\*S Chisum 6175  
#S Pride Anna 709  
#Vermilion Payweight J847  
+Basin Lucy 3829#\*Baldridge Waylon W34  
BIG Waylon of 3416 B65  
+\*18528755

+\*GAR Retail Product 3416

#\*GAR-EGL Protege  
\*Baldridge Blackcap T163  
#GAR Retail Product  
GAR 1407 New Design 432Act BW  
71  
Adj WW  
777  
Adj YW  
1079

CED	BW	WW	YW	Milk	SC	SEN			
+1	+2.8	+58	+100	+21	-.39	-16			
CW	MARB	REA	FAT	SM	SW	SF	SG	SB	SC
+40	+62	+106	-.019	+32	+51	+83	+59	+143	+217
		3%	15%				20%		

This bull offers genetic diversity with added performance.

If you are unable to attend  
the sale, you may go to  
[Superiorclicktobid.com](http://Superiorclicktobid.com) to view  
videos and purchase cattle.







**Stevenson Big League 70749 -**  
Sire of Lots 51-53.

**SEXTON GENETICS**  
**51**  
**SG Big League 9517**  
Birth Date: 3-11-2019 • Bull +\*19559738 • Tat.: 9517

\*Jindra Acclaim  
Stevenson Big League 70749  
+\*18836113

\*Jindra 3rd Dimension  
+Jindra Blackbird Lassy 1111  
#\*SAV Thunderbird 9061  
#RL 0145 Image 102

#TC Total 410  
EF Blackcap 2253  
+\*17316701

\*RB Blackcap 624

CED	BW	WW	YW	Milk	SC	SEN			
+5	+1.0	+68	+108	+31	+15	-19			
		15%		15%					
CW	MARB	REA	FAT	\$M	\$W	\$F	\$G	\$B	\$C
+49	+81	+27	-.009	+48	+82	+91	+57	+147	+239
	20%		25%		4%	25%	20%	25%	

Act BW 70  
Adj WW 779  
Adj YW 1173

Moderate birth with explosive performance.

**SEXTON GENETICS**  
**53**  
**SG Big League 9523**  
Birth Date: 3-16-2019 • Bull +\*19559740 • Tat.: 9523

\*Jindra Acclaim  
Stevenson Big League 70749  
+\*18836113

\*Jindra 3rd Dimension  
+Jindra Blackbird Lassy 1111  
#\*SAV Thunderbird 9061  
#RL 0145 Image 102

#TC Total 410  
EF Blackcap 2253  
+\*17316701

\*RB Blackcap 624

CED	BW	WW	YW	Milk	SC	SEN			
+9	+1.5	+78	+132	+24	+23	-38			
		4%	10%						
CW	MARB	REA	FAT	\$M	\$W	\$F	\$G	\$B	\$C
+65	+58	+66	-.046	+44	+78	+114	+54	+168	+262
	5%		2%		10%	2%		5%	15%

Act BW 78  
Adj WW 786  
Adj YW 1152

A big-spread bull that adjusted up to almost 800 lbs. at weaning.

**SEXTON GENETICS**  
**52**  
**SG Big League 9519**  
Birth Date: 3-14-2019 • Bull +\*19559739 • Tat.: 9519

\*Jindra Acclaim  
Stevenson Big League 70749  
+\*18836113

\*Jindra 3rd Dimension  
+Jindra Blackbird Lassy 1111  
#\*SAV Thunderbird 9061  
#RL 0145 Image 102

#TC Total 410  
EF Blackcap 2253  
+\*17316701

\*RB Blackcap 624

CED	BW	WW	YW	Milk	SC	SEN			
+11	+1.1	+65	+113	+33	-.18	-21			
		15%	25%	10%					
CW	MARB	REA	FAT	\$M	\$W	\$F	\$G	\$B	\$C
+53	+70	+40	+0.004	+60	+78	+106	+52	+158	+265
	20%				10%	5%		15%	15%

Act BW 73  
Adj WW 771  
Adj YW 1077

**Calving-Ease Recommended for use on Heifers.**  
Calving-ease with spread!

**SEXTON GENETICS**  
**54**  
**3F Titus 8770**  
Birth Date: 11-10-2018 • Bull +\*19454215 • Tat.: 8770

\*Byergo Black Magic 3348  
Byergo Titus 6340  
+\*18818214

\*Byergo Miss Elia 2834

\*Silveiras Conversion 8064  
\*Byergo Elia Cupcake 5900  
Byergo Big Time 8728  
Byergo Miss Elia 8756

#TC Total 410  
CoX 27R A036  
+\*17810077

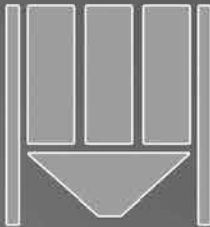
\*SQ 27R of 3540 FD

CED	BW	WW	YW	Milk	SC	SEN			
-2	+4.6	+91	+148	+30	+1.44	-42			
		1%	1%	20%	15%				
CW	MARB	REA	FAT	\$M	\$W	\$F	\$G	\$B	\$C
+74	+53	+90	-.004	+62	+90	+114	+52	+166	+277
	1%	10%			1%	2%		10%	10%

Act BW 70  
Adj WW 779  
Adj YW 1024

The only 2-year-old bull in the offering. Take advantage of this age bull.

**SALE DAY MEAL PROUDLY SPONSORED BY**



# **Livestock Nutrition Center**

**Better Feed, Better Results**



**LNC-ONLINE.COM**

# YOU'VE DONE THE WORK.

---

Get paid for it.

You've invested in good genetics.  
You've kept all the records.

**AngusLink<sup>SM</sup>** combines USDA Process Verified Programs with a Genetic Merit Scorecard that gives buyers confidence in your calves.

From age and source verification to cattle care and handling, you choose which programs make the most sense for you.

**Group Age & Source:** Verifies the group age and source of the cattle

**Angus-Sired Genetics:** Verifies calves are sired by 100% registered Angus bulls

**Non-Hormone Treated Cattle:** Verifies cattle have never received hormones

**NeverEver<sup>3</sup>:** No antibiotics, no hormones, no animal by-products ever

**Cattle Care & Handling:** Documents proper management, demonstrates quality commitment

**Calf Management:** Documents preventative health program

**Genetic Merit Scorecard<sup>SM</sup>:** Measures the genetic merit of calves for feedlot performance and carcass merit.

*\*Optional, not part of the PVP claims*

Easy and affordable, our customer service representatives walk you through the process.

# ANGUSLINK<sup>SM</sup>

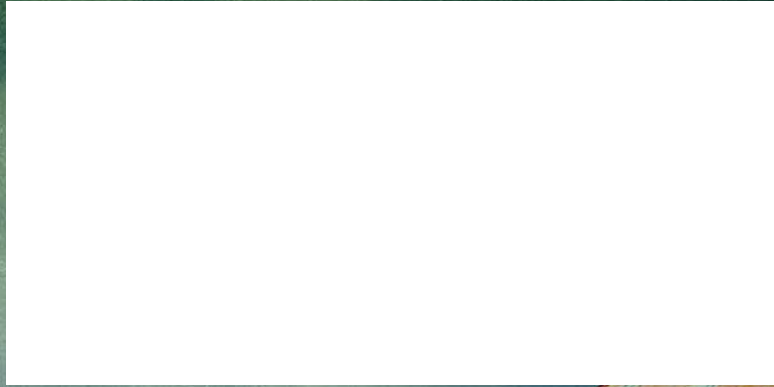
VALUE ADDED PROGRAMS

Call us at 816-383-5100 to sign up or  
visit [AngusLink.com](http://AngusLink.com) for more information.

**SEXTON**  
GENETICS

6959 Hwy. 251A  
Fort Gibson, Ok 74434

PRSRT  
FIRST CLASS  
U.S. POSTAGE  
**PAID**  
St. Joseph, MO  
Permit #2017



**SEXTON**  
GENETICS

**FALL BULL  
SALE**

**OCTOBER 31, 2020**

Saturday at 12 noon (CDT)

