

HEREFORD

BOWLING RANCH

RED ANGUS

Spring INAUGURAL
BULL SALE

THURSDAY - APRIL 8, 2021 | NOON
AT THE RANCH NEAR NEWKIRK, OK

Welcome Back to Bowling Ranch!



Welcome to our Inaugural Spring Bull Sale. As more of our customers have transitioned to Spring calving, we felt the need to move our bull sale from the Fall to Spring. One thing you'll see hasn't changed is our commitment to raising stout, strong aged bulls.

We're back to seeing some rewarding markets in the Ag industry from the crops side to the commercial cattle business. We feel that this set of bulls is one of the absolute best we've ever offered. We've heavily invested in both AI and ET breeding to offer genetics with a higher degree of accuracy and out of proven sires and donor dams in both the Hereford and Red Angus breeds. These bulls are strong aged and ready for heavy service.

When you evaluate these genetics on paper, you'll see this is the best set of genetics we've offered to date. Of the 38 registered Hereford bulls selling, **the following number of head fall in the top 20% of the Hereford breed:**

CE: 8	WW: 15	YW: 16	REA: 14	MARB: 15
-------	--------	--------	---------	----------

In our Red Angus division, these bulls are bred for power and growth. Of the 17 Red Angus, **the following number of bulls fall in the top 20% of the breed:**

WW: 9	YW: 8	REA: 3	MARB: 6
-------	-------	--------	---------

Bowling Ranch bulls are developed on wheat pasture as well as supplementation of a 12% growing ration. They also have free choice access to silage, alfalfa, and prairie hay. They all run in big fields to afford plenty of exercise. These bulls are in good flesh, but not fat and have a sound set of feet and legs under them. We raise our bulls to be ready to be turned out and not melt over their first breeding season.

We stand behind this set of bulls 100% and welcome any feedback from our customers at any time. If at anytime you have any questions, please feel free to give Tim or any of us at the ranch a call. As always, visitors are welcome anytime. We look forward to seeing you sale day!

Nancy Bowling, Tim Stidham, Kris Young & Melvin Young



Tim Stidham



Kris Young



Melvin Young

Welcome to the Inaugural Spring Bull Sale at Bowling Ranch.

As you evaluate the offering in the following pages, you'll see one of the deepest, stoutest sets of bulls from both the Hereford and Red Angus breeds. Nancy and her crew have made significant investments in some of the top donor cows you'll find anywhere in the country. Resulting from this, you'll find some of the most maternal, elite, high accuracy

genetics that will go out in the country and sire some of the best replacement females around.

With the recent volatility we've witnessed in the cow-calf markets, it is imperative now more than ever to invest in genetics that can and will make a genetic improvement in a lone generation. The young sires represented in this catalog will do just that.

All of the bulls are strong aged and ready for heavy service. Buy with confidence that these bulls will stand the test of time.

If at any time you have any questions, or I can be of service, please do not hesitate to contact me.

Justin B. Stout
Sale Manager (913) 645-5136
JBS5356@hotmail.com

Hereford Breed Avg. EPDs

CE	BW	WW	YW	DMI	SC	SCF	MM	M&G	MCE	MCW	UDDR	TEAT	CW	FAT	REA	MARB	BMI\$	BIIS	CHBS
2.5	2.9	52	84	0.1	0.9	16.4	24	51	1.8	89	1.23	1.24	66	0.013	0.37	0.10	348	416	111

2021 Spring Bull Sale Information



Thursday, April 8th | 12:00 Noon

At the Ranch Southeast of Arkansas City on the KS-OK state line

... SALE LOCATION ...

GPS Address: 9201 East Stateline Rd., Newkirk, OK 74647

From I-35 in KS — Exit at Arkansas City/South Haven (exit #4) and travel east on US 166 19 miles into Arkansas City. At the first light, go south ½ mile, then back east 2 miles on US 166/77. At the roundabout, stay on eastbound 166 and travel 7 miles to 141 Road. Turn south on 141 Road for 2 miles, west on 296 Road for 1 mile, then south again on 141 Road into Silverdale. Continue south of Silverdale, up the hill, and the blacktop will turn west, becoming 392 Road (E. Stateline Rd.) Watch for ranch sign and entrance ahead.

From Westbound US 166 — 22 miles west of Cedar Vale, Kansas, turn south on 141 Road for 2 miles. Turn west on 296 Road for 1 mile, then south again on 141 Road into Silverdale. See above for directions to ranch.

From Newkirk, OK — At the intersection of US 77 (Main St.) and 7th Street, travel east and 7th will become River Road. Continue east on River Road 5 miles. After crossing Arkansas River, turn north on Silverdale Lane (sand/gravel road) for 9 miles. Watch for ranch sign when road goes uphill and turns east. In the event of rain, we recommend going through Arkansas City, Kansas.

... SALE DAY CONTACTS ...

Justin B. Stout 913-645-5136
Matt Caldwell 913-755-1105
Tim Stidham 405-742-4553
Nancy Bowling 580-362-5026
Kris Young 620-660-0971
Melvin Young 580-761-9257

... AUCTIONEER ...

Justin B. Stout 913-645-5136

... LIVESTOCK PUBLICATION REPRESENTATIVES ...

Colton Pratz, *Hereford World* 405-385-1054
Doug Paul, *The Stock Exchange* 405-820-3982
Guy Peverley, *The Stock Exchange* 785-456-4390
Chisolm Kinder, *Oklahoma Cowman* 405-747-4683
Stephen Russell, *Kansas Stockman* 785-458-2650
Jack Chastain, *Texas Hereford* 817-821-3544

... SPECIAL GUESTS ...

Newley Hutchison, Director, Red Angus Assn. of America
Brooke Hinojosa-Sidwell, Executive Secretary, Oklahoma
Hereford Assn.
Tom Granzow, Manager, Kansas Hereford Assn.

... ACCOMMODATIONS ...

Arkansas City, Kansas. — 20 minutes from the ranch
Best Western 620-307-6767
Ponca City
Holiday Inn Express 580-762-3700

... SALE VIDEOS ...

Videos will be available on the bulls selling in the sale a couple weeks before sale day. All bulls and females will be penned and on display sale day. To view videos of each bull selling, please visit our website, BowlingRanch.com

... TERMS OF SALE ...

All cattle sell under the suggested Terms and Conditions of the American Hereford Association and the Red Angus Association of America.

... BID LIVE ON ...

Can't make the sale? Watch it live and bid in real-time on SuperiorLivestock.com.



... FOOD ...

A complimentary lunch will be served at 11 a.m.

... INSPECTION OF THE CATTLE ...

All of the bulls will be on display Wednesday, April 7th and Thursday morning before the sale.

... DELIVERY ...

Free delivery on purchases of bulls over \$5,000.

... GUARANTEE ...

All bulls sold through the sale are guaranteed to be satisfactory breeders for the first breeding season following the sale. All bulls selling have been semen evaluated, scrotal measured and given a breeding soundness exam. If there is a reproductive problem, contact us immediately and a replacement bull will be provided if available or a credit equal to the animal's purchase price minus salvage value will be issued for the replacement of one animal. This guarantee does not cover illness or death to the animal. There will be livestock mortality insurance available on sale day at the settlement table at the buyer's expense.

... HEALTH ...

Individual health papers will be provided for shipment interstate.

... LIABILITY ...

All persons attending the sale do so at their own risk. The owners and sale staff assume no liability for property loss or accidents that may occur.

Red Angus Guide to EPDS and Indexes

ProS... Profitability and Sustainability is an all-purpose index that predicts average economic differences in all segments in the beef supply chain. This index is a combination of the breeding objectives modeled in the HerdBuilder and GridMaster selection indexes. In this index, replacement heifers are retained from within the herd and all remaining progeny are fed out to slaughter and sold on a quality-based grid. Traits included in this index include calving ease, growth, HPG, STAY, Mature Weight, Dry Matter Intake and carcass traits. The resulting index is expressed in dollars per head born (Index/High Value).

HB..... HerdBuilder is a maternal selection index that predicts the economic differences of animals for traits that are important from conception through weaning. Expressed as dollars per head born, HB is calculated based on the scenario that bulls are mated to heifers and cows, replacement heifers are retained and all remaining progeny are marketed at weaning. Traits included in the HB index include Calving Ease Direct, Calving Ease Maternal, Weaning Weight, Milk, Mature Weight, Heifer Pregnancy and Stayability (Index/High Value).

GM..... GridMaster is a selection index that predicts the average economic difference of non-replacement calves through the post-weaning phase of production. GM places selection pressure on growth, feedyard performance and carcass traits. Expressed as dollars per head born, GM is calculated based on the scenario that progeny are fed out to slaughter and marketed on a quality-based carcass grid. Traits included in GM include Average Daily Gain, Carcass Weight, Dry Matter Intake, Marbling, Back Fat and Rib Eye Area (Index/High Value).

CED..... Calving Ease Direct predicts differences in the percent of calves born unassisted out of 2-year-old dams. (Percent/High Value)

BW..... Birth Weight predicts differences in actual birth weight of progeny. (Pounds/Low Value)

WW..... Weaning Weight predicts differences in 205-day weaning weight. (Pounds/High Value)

YW..... Yearling Weight predicts differences in 365-day yearling weight. (Pounds/High Value)

ADG..... Average Daily Gain predicts differences in weight gain between 205 and 365 days of age. (Pounds/High Value)

DMI..... Dry Matter Intake predicts differences in daily feed intake as measured in a feedlot during the post-weaning period. (Pounds/Low Value)

MILK..... Milk predicts differences in weaning weight attributed to the milking ability of the animal's daughters. (Pounds/High Value)

ME..... Maintenance Energy predicts the difference in maintenance energy requirements. (Mcal per Month/Low Value)

HPG..... Heifer Pregnancy predicts differences in the percent of daughters who are able to conceive and calve at 2 years of age following exposure to breeding. (Percent/High Value)

CEM..... Calving Ease Maternal predicts differences in the percent of daughters who are able to calve unassisted as 2-year-old heifers. (Percent/High Value)

STAY..... Stayability predicts differences in the ability of an animals' retained daughters to remain productive in the herd – calve every year – through 6 years of age. (Percent/High Value)

MARB..... Marbling predicts differences in marbling score – amount of intramuscular fat measured at the 13th rib. (Marbling Score Units/High Value)

YG..... Yield Grade predicts differences in USDA Yield Grade, which is calculated using CW, REA and Fat. (Yield Grade Units/Low Value)

CW..... Carcass Weight predicts differences in actual hot carcass weight. (Pounds/High Value)

REA..... Ribeye Area predicts differences in square inches of ribeye area measured at the 13th rib. (Square Inches/High Value)

FAT..... Fat predicts differences in the depth of backfat measured between the 12th and 13th ribs. (Inches/Low Value)

RE ANGUS
RANCH TESTED. RANCHER TRUSTED.
RedAngus.org



UNDERSTANDING HEREFORD EPDS

The American Hereford Association (AHA) currently produces expected progeny differences (EPDs) for 17 traits and calculates three profit indexes. HA's genetic evaluation makes use of a Marker Effects Model that allows the calculation of EPDs by incorporating the pedigree, phenotypic and genomic profile of an animal. Animals that have a genomic profile will be denoted with a GE-EPD logo.

The current suite of Hereford EPDs and profit indexes includes:

Calving Ease — Direct (CE)

CE EPD is based on calving ease scores and birth weights and is measured on a percentage. CE EPD indicates the influence of the sire on calving ease in females calving at 2 years of age. For example, if sire A has a CE EPD of 6 and sire B has a CE EPD of -2, then you would expect on average, if comparably mated, sire A's calves would have an 8 percent more likely chance of unassisted calving when compared to sire B's calves.

Birth Weight (BW)

BW EPD is an indicator trait for calving ease and is measured in pounds. For example, if sire A has a BW EPD of 3.6 and sire B has a BW EPD of 0.6, then you would expect on average, if comparably mated, sire A's calves would come 3 lb. heavier at birth when compared to sire B's calves. Larger BW EPDs usually, but not always, indicate more calving difficulty. The figure in parentheses found after each EPD is an accuracy value or reliability of the EPD.

Weaning Weight (WW)

WW EPD is an estimate of pre-weaning growth that is measured in pounds. For example, if sire A has a WW EPD of 60 and sire B has a WW EPD of 40, then you would expect on average if comparably mated, sire A's calves would weigh 20 lb. heavier at weaning when compared to sire B's calves.

Yearling Weight (YW)

YW EPD is an estimate of post-weaning growth that is measured in pounds. For example, if sire A has a YW EPD of 100 and sire B has a YW EPD of 70, then you would expect on average if comparably mated, sire A's calves would weigh 30 lb. heavier at a year of age when compared to sire B's calves.

Dry Matter Intake (DMI)

The DMI EPD predicts the daily consumption of pounds of feed. For example, if sire A has a DMI EPD of 1.1 and sire B has a DMI EPD of 0.1, you would expect sire B's progeny, if comparably mated, to consume on average 1 pound of feed less per day.

Scrotal Circumference (SC)

Measured in centimeters and adjusted to 365 days of age, SC EPD is the best estimate of fertility. It is related to the bull's own semen quantity and quality, and is also associated with age at puberty of sons and daughters. Larger SC EPDs suggest younger age at puberty. Yearling sons of a sire with a 0.7 SC EPD should have yearling scrotal circumference measurements that average 0.7 centimeters (cm) larger than progeny by a bull with an EPD of 0.0 cm.

Sustained Cow Fertility

The AHA's new SCF EPD is a prediction of a cow's ability to continue to calve from three years of age through 12 years of age, given she calved as a two-year-old. The EPD is expressed as a deviation in the proportion of the 10 possible calvings to 12 years old expressed as a probability. For example, the daughters of a bull with a 30 EPD would have the genetic potential to have one more calf by age 12 than the daughters from a bull with a 20 EPD. In other words, the daughters from the 30 EPD bull would have a 10% greater probability of having one more calf than the bull with a 20 EPD. This is equivalent to saying that the daughters are 10% more likely to remain in the herd to age 12.

Maternal Milk (MM)

The MM EPD of a sire's daughters is expressed in pounds of calf weaned. It predicts the difference in average weaning weights of sires' daughters' progeny due to milking ability. Daughters of the sire with a +14 MM EPD should produce progeny with 205-day weights averaging 24 lb. more (as a result of greater milk production) than daughters of a bull with a MM EPD of -10 lb. (14 minus -10.0 = 24 lb.). This difference in weaning weight is due to total milk production during the entire lactation.

Maternal Milk & Growth (M&G)

The M&G EPD reflects what the sire is expected to transmit to his daughters for a combination of growth genetics through weaning and genetics for milking ability. It is an estimate of the daughter's progeny weaning weight. A bull with a 29 lb. M&G EPD should sire daughters with progeny weaning weights averaging 19 lb. heavier than progeny of a bull's daughters with a M&G EPD of 10 lb. (29 minus 10 = 19 lb.). It is equal to one-half the sire's weaning weight EPD, plus all of his MM EPD. No accuracy is associated with this since it is simply a mathematical combination of two other EPDs. It is sometimes referred to as "total maternal" or "combined maternal."

Maternal Calving Ease (MCE)

MCE EPD predicts how easily a sire's daughters will calve at two years of age and is measured on a percentage. For example, if sire A has a MCE EPD of 7 and sire B has a CE EPD of -3, then you would expect on average if comparably mated, sire A's daughters would calve with a 10% more likely chance of being unassisted when compared to sire B's daughters.

Mature Cow Weight (MCW)

The MCW EPD was designed to help breeders select sires that will either increase or decrease mature size of cows in the herd. The trait was developed after years of cow weight data collection and the EPD relates directly to the maintenance requirements of a cow herd. For example, if sire A has a MCW EPD of 100 and sire B has an EPD of 85, then you would expect the females of sire A, if comparably mated, to be 15 lb. heavier at mature size.

Udder suspension (UDDR)

UDDR EPDs are reported on a 9 (very tight) to 1 (very pendulous) scoring scale. Differences in sire EPDs predict

the difference expected in the sires' daughters' udder characteristics when managed in the same environment. For example, if sire A has a UDDR EPD of 0.4, and sire B has a UDDR EPD of -0.1, the difference in the values is 0.5, or one-half of a score. If daughters of sires A and B are raised and managed in the same environment, you would expect half a score better udder suspension in daughters of sire A, compared to sire B.

Teat size (TEAT)

TEAT EPDs are reported on a 9 (very small) to 1 (very large, balloon shaped) scoring scale. Differences in sire EPDs predict the difference expected in the sires' daughters' udder characteristics when managed in the same environment. For example, if sire A has a teat size EPD of 0.4, and sire B has a teat size EPD of -0.1, the difference in the values is 0.5, or one-half of a score. If daughters of sires A and B are raised and managed in the same environment, you would expect half a score smaller teat size in daughters of sire A, compared to sire B.

Carcass Weight (CW)

CW EPD is a beneficial trait when considering the impact that pounds have relative to end product value. At the same age constant endpoint, sires with higher values for carcass weight will add more pounds of hot carcass weight compared to sires with lower values for carcass weight. For example, if sire A has a CW EPD of 84 and sire B has a CW EPD 64, then you would expect the progeny of sire A, if harvested at the same age constant endpoint, to have a 20-lb. advantage in terms of hot carcass weight.

Rib Fat (FAT)

The FAT EPD reflects differences in adjusted 365-day, 12th-rib fat thickness based on carcass measurements of harvested cattle. Sires with low, or negative FAT EPDs, are expected to produce leaner progeny than sires with higher EPDs. Ultrasound measures are also incorporated into this trait and have been shown to be highly correlated with the performance of slaughter progeny. All data is expressed on a carcass scale.

Ribeye Area (REA)

REA EPDs reflect differences in an adjusted 365-day ribeye area measurement based on carcass measurements of harvested cattle. Sires with relatively higher REA EPDs are expected to produce better-muscled and higher percentage yielding slaughter progeny than will sires with lower REA EPDs. Ultrasound measurements are also incorporated into this trait and have been shown to be highly correlated with the performance of slaughter progeny. All data is expressed on a carcass scale.

Marbling (MARB)

MARB EPDs reflect differences in an adjusted 365-day marbling score (intramuscular fat, [IMF]) based on carcass measurements of harvested cattle. Breeding cattle with higher MARB EPDs should produce slaughter progeny with a higher degree of IMF and therefore higher quality grades. Ultrasound measurements are also incorporated into this trait and have been shown to be highly correlated with the performance

of slaughter progeny. All data is expressed on a carcass scale.

Baldy Maternal Index (BMIS)

The BMIS is a maternally focused index that is based on a production system that uses Hereford x Angus cross cows. Progeny of these cows are directed towards Certified Hereford Beef. This index has significant weight on Sustained Cow Fertility, which predicts fertility and longevity of females. There is a slightly positive weight on Weaning Weight, Mature Cow Weight and Milk which accounts for enough growth but ensures females do not increase inputs. There is some negative emphasis on Dry Matter Intake, but a positive weighting on Carcass Weight which is anticipated to provide profitability from finishing of non-replacement females and castrated males. Marbling and Rib-eye Area are also positively weighted to keep the harvested progeny successful for CHB. This index is geared to identify Hereford bulls that will be profitable when used in a rotational cross with mature commercial Angus cows.

Brahman Influence Index (BIIS)

The BIIS is a maternally focused index that is based on a production system that uses Brahman x Hereford cross cows. Progeny of these cows are directed towards a commodity beef market since Certified Hereford Beef® does not accept Brahman influenced cattle. This index has significant weight on Sustained Cow Fertility, which predicts fertility and longevity of females. There is a slightly positive weight on Weaning Weight, Mature Cow Weight and Milk which accounts for enough growth but ensures females do not increase inputs. There is some negative emphasis on Dry Matter Intake, but a positive weighting on Carcass Weight which is anticipated to provide profitability in finishing non-replacement females and castrated males. Marbling and Rib-eye Area are also positively weighted to keep harvested progeny successful for a variety of commodity based programs. This index targets producers that use Hereford bulls on Brahman influenced cows.

Certified Hereford Beef Index (CHBS)

CHBS is a terminal sire index that is built on a production system where Hereford bulls are mated to mature commercial Angus cows and all progeny will be targeted for Certified Hereford Beef® after the finishing phase. This index has significant weight on Carcass Weight to ensure profit on the rail. As well there is a positive weighting for Average Daily Gain along with a negative weighting on Dry Matter Intake to ensure efficient pounds of growth in the finishing phase. Keep in mind, this production system takes advantage of complimentary breeding with the commercial Angus cow. Although Marbling is weighted positively in this index, a positive weighting for Rib-eye Area and a negative weighting for Back Fat are a greater priority in this index to allow for optimum end-product merit. This is the only index that has no emphasis on fertility. Remember that no replacement heifers are being retained.

HOW TO PARTICIPATE AS AN ABSENTEE BUYER

We have made preparations to bid and buy livestock through Superior Productions' "Call or Click-To-Bid" service for those unable to attend in person on sale day.

HERE'S HOW IT WORKS

Turn in Bids Over the Phone. This is our traditional method of buying livestock. To get started simply go online to www.superiorlivestock.com and click on the tab titled "Register for a Buyer Number". Select the registration form for Superior Productions and print the registration form, fill it out and fax it in to Superior Productions at (817) 378-3380 with a signature on it, or scan and email the form to info@superiorauction.com. You can also mail it in to the address provided on the form. Upon receipt of this information Superior will call you with a buyer's number and the bid line phone number that you will use on sale day to place bids over the phone.

Click-To-Bid. This is Superior's online bidding platform for cattle buying. Please note that high speed internet is required - this is not for dial-up or satellite internet. Registration is free, but you must become a member of www.superiorclicktobid.com to sign up. Becoming a member is easy - just go to the homepage of www.superiorclicktobid.com and follow the out-lined steps to get started. Input your information and select a username and password. You will receive an e-mail confirming you are a member. From that point forward you just have to sign in and select the sale you would like to register for and once approved you will receive an e-mail confirming which sale you are now registered for.

Viewing the Auction. There are 2 places to view the sale broadcast live on the internet: www.superiorlivestock.com or www.superiorclicktobid.com. Just go to the home page of either website and select the auction. If you just want to watch the auction on your computer, smartphone or tablet go to www.superiorlivestock.com, but if you want to bid over the computer you must go to www.superiorclicktobid.com. Remember you can call in to bid while watching on the internet, but you must be a member of www.superiorclicktobid.com to "click-to-bid". Your computer must have Flash Media Player installed for this website to view the auction. If you have any questions, please call the Superior Productions office at 800-431-4452.

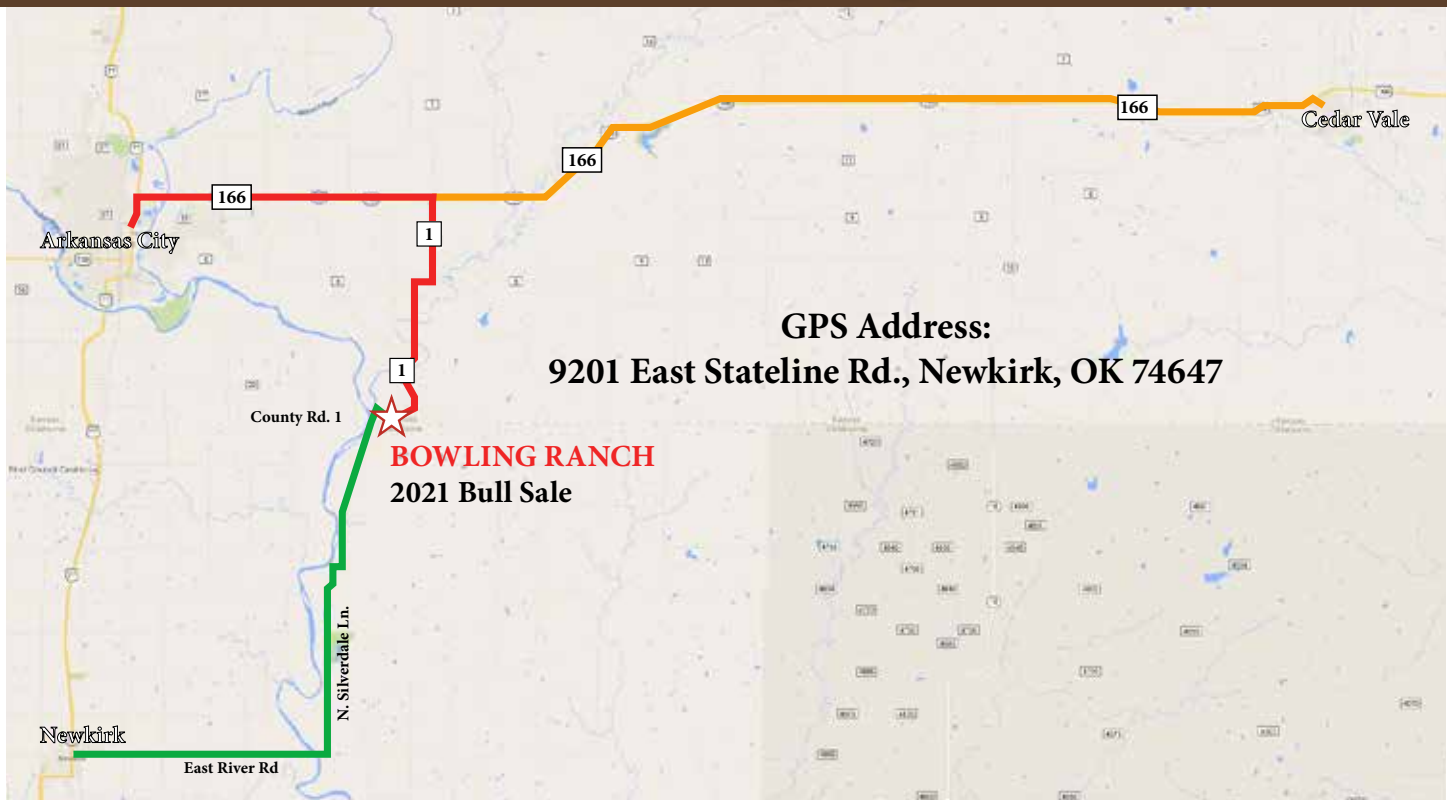
You will receive your buyer number and the bidline telephone number after your registration is processed.

Superior Livestock
Office: 800-422-2117



Fax: 817-378-3380
www.superiorlivestock.com

BOWLING RANCH 2021 Spring Bull Sale Location



HEREFORD SPRING TWO-YEAR-OLD BULLS

LOT 1 BULL

BH PISTOL PETE 6110 921G

43995267 – Calved: 2/22/19 – Tattoo: 921

CRR 5280 (DLF,HYF,IEF) CRR 719 CATAPULT 109 (SOD)(DLF,HYF,IEF,MDF)
 C 2052 5280 LAD 6110 ET (DLF,HYF,IEF,MSUDF) CRR 435 KELLY 178 (DOD)(DLF,HYF,IEF)
 43672918 C 88X RIBEYE LADY 2052 (DLF,HYF,IEF) NJW 985 R117 RIBEYE 88X ET (SOD)(DLF,HYF,IEF,MSUDF,MDF)
 C MS OUTCROSS 0201 ET (DLF,HYF,IEF)



UPS DOMINO 3027 (SOD)(DLF,HYF,IEF,MSUDF,MDF) CL 1 DOMINO 9126J 1ET (SOD)(CHB)(DLF,IEF)
 BOWLING LADY 3027 DOMINO 224Z UPS MISS DIAMOND 1353 (DLF,HYF,IEF,MSUDF)
 43310159 EE MS ADVANCE 571 4306 8277 (DLF,HYF,IEF) L1 DOMINO 03571 (SOD)(DLF,HYF,IEF)
 EE MS 2136 L1 4306 (DOD)

BMI\$
504
BI\$
587
CHB\$
103

CE	BW	WW	YW	DMI	SC	SCF	MM	M&G
7.7	1.3	55	88	0.4	1.0	27.9	26	54
CEM	MCW	UDDR	TEAT	CW	FAT	REA	MARB	
3.8	76	1.30	1.30	57	0.004	0.33	0.17	

- When we purchased 6110 a few years ago we knew he would sire excellent daughters, but his sons have been quite impressive as well. 921 is better than breed average for all of his traits and is a great calving ease prospect. He's out of a top producing dam that sports a WW ratio of 103.
- Top 3% for SCF; Top 5% for UDDR, BMI and BI; Top 10% for TEAT and MARB; Top 15% for SC and MM; Top 20% for CE, BW, MG and MCW; Top 25% for CHB.
- WW ratio: 107 YW ratio: 107



Lot 1 – BH Pistol Pete 6110 921G

LOT 2 BULL

BH RISE ABOVE 759 923G

P43995273 – Calved: 2/24/19 – Tattoo: 923

GERBER ANODYNE 001A (CHB)(DLF,HYF,IEF,MSUDF) KCF BENNETT 9126J R294 (SOD)(DLF,IEF)
 SHF EARLY RISER 001A E309 ET (CHB)(DLF,HYF,IEF) GERBER 627S HOLLY 096Y (DLF,HYF,IEF)
 P43793720 SHF MAGGIE LG Z161 (DLF,HYF,IEF,MSUDF) SHF KENNEDY 502R X36 (DLF,HYF,IEF,MDF)
 SHF MAGGIE T57 W74 (DLF,HYF,IEF,MSUDF)



BH OKLA TRUSTWORTHY 3055 ET (DLF,HYF,IEF) NJW 73S M326 TRUST 100W ET (SOD)(CHB)(DLF,HYF,IEF,MSUDF,MDF)
 BH TRUSTING LADY 3055 759 CHURCHILL LADY 7204T (DLF,HYF,IEF)
 43827746 BOWLING LADY JO 3005 BR JOE DOMINO 1014 ET (DLF,HYF,IEF)
 D MS 627 DOMINET 051

BMI\$
394
BI\$
482
CHB\$
132

CE	BW	WW	YW	DMI	SC	SCF	MM	M&G
8.4	1.6	58	86	0.4	1.4	18.4	29	58
CEM	MCW	UDDR	TEAT	CW	FAT	REA	MARB	
6.7	101	1.60	1.60	73	0.024	0.49	0.31	

- Recommended for heifers, and a terrific set of EPDs. He checks all the boxes from calving ease, growth and carcass.
- Top 5% for UDDR; Top 10% for TEAT, CW, REA and CHB; Top 15% for MG and MARB; Top 20% for WW, SC and MCE; Top 25% for BW, YW, MM and BI.
- REA ratio: 117 IMF ratio: 102



Lot 2 – BH Rise Above 759 923G

LOT 3 BULL

BH PISTOL PETE 3029 944G

44119291 – Calved: 2/25/19 – Tattoo: 944

CRR 5280 (DLF,HYF,IEF) CRR 719 CATAPULT 109 (SOD)(DLF,HYF,IEF,MDF)
 C 2052 5280 LAD 6110 ET (DLF,HYF,IEF,MSUDF) CRR 435 KELLY 178 (DOD)(DLF,HYF,IEF)
 43672918 C 88X RIBEYE LADY 2052 (DLF,HYF,IEF) NJW 985 R117 RIBEYE 88X ET (SOD)(DLF,HYF,IEF,MSUDF,MDF)
 C MS OUTCROSS 0201 ET (DLF,HYF,IEF)



BR JOE DOMINO 1014 ET (DLF,HYF,IEF) CL 1 DOMINO 955W (SOD)(CHB)(DLF,HYF,IEF)
 BOWLING LADY JO 3029 ZZ TWIN BR GABRIELLE 5082 (DLF,HYF,IEF)
 43488607 CHURCHILL LADY 7204T (DLF,HYF,IEF) CJH HARLAND 408 (SOD)(DLF,HYF,IEF,MSUDF,MDF)
 CHURCHILL LADY 0126 (DLF,HYF,IEF)

BMI\$
442
BI\$
540
CHB\$
130

CE	BW	WW	YW	DMI	SC	SCF	MM	M&G
4.5	2.5	63	90	0.5	1.0	21.9	32	64
CEM	MCW	UDDR	TEAT	CW	FAT	REA	MARB	
2.1	97	1.30	1.40	75	0.044	0.42	0.32	

- Out of another high producing dam with a production WW ratio of 110 on 4 calves. He'll be a great female producer.
- Top 5% for UDDR; Top 10% for MG; Top 15% for WW and SC; Top 20% for YW, MM and CW; Top 25% for BMI and BI.



Lot 3 – BH Pistol Pete 3029 944G

HEREFORD SPRING TWO-YEAR-OLD BULLS



Lot 4 – BH Early Riser E309 941G

LOT 4 BULL

BH EARLY RISER E309 941G

P44011613 – Calved: 3/25/19 – Tattoo: 941

GERBER ANODYNE 001A (CHB)(DLF,HYF,IEF,MSUDF) KCF BENNETT 9126J R294 (SOD)(DLF,IEF)
 SHF EARLY RISER 001A E309 ET (CHB)(DLF,HYF,IEF) GERBER 627S HOLLY 096Y (DLF,HYF,IEF)
 P43793720 SHF MAGGIE LG Z161 (DLF,HYF,IEF,MSUDF) SHF KENNEDY 502R X36 (DLF,HYF,IEF,MDF)
 SHF MAGGIE T57 W74 (DLF,HYF,IEF,MSUDF)



BOWLING 3027 DOMINO 212Z (DLF,HYF,IEF) UPS DOMINO 3027 (SOD)(DLF,HYF,IEF,MSUDF,MDF)
 BH LADY DOMINO 212 6133 (DLF,HYF,IEF) _D 5104 LADY DOM ADV 005
 43814028 BOWLING LADY JOSIE 4127 A BR JOE DOMINO 1014 ET (DLF,HYF,IEF)
 HH MISS ADVANCE 2284Z ET (DLF,HYF,IEF)

BMIS
415
BIIS
490
CHBS
119

CE	BW	WW	YW	DMI	SC	SCF	MM	M&G
6.2	0.6	52	82	0.3	1.3	20.6	28	53
CEM	MCW	UDDR	TEAT	CW	FAT	REA	MARB	
5.7	102	1.50	1.50	68	0.004	0.40	0.18	

- High performing, calving ease bull that is out of a first calf heifer.
- Top 5% for UDDR; Top 10% for BW, MARB and TEAT; Top 15% for MCE; Top 25% for CE, CHB, BMI and BI.
- WW ratio: 109



Lot 5 – BH Pistol Pete 6110 938G

LOT 5 BULL

BH PISTOL PETE 6110 938G

43998874 – Calved: 3/16/19 – Tattoo: 938

CRR 5280 (DLF,HYF,IEF) CRR 719 CATAPULT 109 (SOD)(DLF,HYF,IEF,MDF)
 C 2052 5280 LAD 6110 ET (DLF,HYF,IEF,MSUDF) CRR 435 KELLY 178 (DOD)(DLF,HYF,IEF)
 43672918 C 88X RIBEYE LADY 2052 (DLF,HYF,IEF) NJW 98S R117 RIBEYE 88X ET (SOD)(DLF,HYF,IEF,MSUDF,MDF)
 C MS OUTCROSS 0201 ET (DLF,HYF,IEF)



MCR L91 DOMINO 627 ET -S PURE GOLD 160A L91 (SOD)(DLF)
 BOWLING LADY 213 Z (DOD) PPF MCR MARK DOMINET 191
 43315283 EE MS ADVANCE 571 5150 8208 (DLF,HYF,IEF) LT DOMINO 03571 (SOD)(DLF,HYF,IEF)
 EE 109 3215 5150

BMIS
417
BIIS
494
CHBS
110

CE	BW	WW	YW	DMI	SC	SCF	MM	M&G
8.5	1.6	47	68	0.2	1.0	21.2	36	59
CEM	MCW	UDDR	TEAT	CW	FAT	REA	MARB	
4.9	75	1.30	1.40	54	0.004	0.43	0.28	

- You'll love the daughter here. Sired by 6110, 938 is out of one of our top cows on the place who is a Dam of Distinction. She has a production WW ratio of 110 on 7 head.
- Top 10% for MCW; Top 15% for SC, MM, MG and MARB; Top 20% for TEAT.
- WW ratio: 115 YW ratio: 101 IMF ratio: 119



Joe McKee, Shannon Rhodes and Ty Brady

LOT 6 BULL

BH CONSULTANT 915G

P44019834 – Calved: 2/20/19 – Tattoo: 915

GV CMR X151 MR 847 Z210 (DLF,HYF,IEF,MDF) F REST EASY 847 (SOD)(DLF,HYF,IEF)
 SHF CONSULTANT Z210 C36 ET (DLF,HYF,IEF,MSUDF,MDF) GRANDVIEW CMR MS 424 X151 ET (DLF,HYF,IEF)
 P43803225 SHF L388 X36 Z25 ET (DLF,HYF,IEF) SHF KENNEDY 502R X36 (DLF,HYF,IEF,MDF)
 SHF PHOENIX P68 (DLF,HYF,IEF)



BH OKLA TRUSTWORTHY 3055 ET (DLF,HYF,IEF) NJW 73S M326 TRUST 100W ET (SOD)(CHB)(DLF,HYF,IEF,MSUDF,MDF)
 BH TRUSTING LADY 3055 764 CHURCHILL LADY 7204T (DLF,HYF,IEF)
 P43827992 BH LADY TRUST 028 4204B ET NJW 73S M326 TRUST 100W ET (SOD)(CHB)(DLF,HYF,IEF,MSUDF,MDF)
 MCR HARLANDS HELEN 028 (DLF,HYF,IEF)

BMIS
370
BIIS
457
CHBS
124

CE	BW	WW	YW	DMI	SC	SCF	MM	M&G
0.3	4.6	67	102	0.3	1.2	17.0	24	58
CEM	MCW	UDDR	TEAT	CW	FAT	REA	MARB	
5.4	92	1.30	1.30	74	0.024	0.52	0.16	

- Top 5% for WW; Top 10% for YW; Top 15% for SC, MCE and UDDR; Top 20% for CW, REA and CHB; Top 25% for MG.
- WW ratio: 110 YW ratio: 102

Hereford Breed Avg. EPDs

CE	BW	WW	YW	DMI	SC	SCF	MM	M&G	MCE	MCW	UDDR	TEAT	CW	FAT	REA	MARB	BMIS	BIIS	CHBS
2.5	2.9	52	84	0.1	0.9	16.4	24	51	1.8	89	1.23	1.24	66	0.013	0.37	0.10	348	416	111

HEREFORD SPRING TWO-YEAR-OLD BULLS

LOT 7 BULL

BH CONSULTANT C36 914G

P44019830 – Calved: 2/16/19 – Tattoo: 914

GV CMR X151 MR 847 Z210 (DLF,HYF,IEF,MDF) F REST EASY 847 (SOD)(DLF,HYF,IEF)
 SHF CONSULTANT Z210 C36 ET (DLF,HYF,IEF,MSUDF,MDF) GRANDVIEW CMR MS 424 X151 ET (DLF,HYF,IEF)
 P43603225 SHF L388 X36 Z25 ET (DLF,HYF,IEF) SHF KENNEDY 502R X36 (DLF,HYF,IEF,MDF)
 SHF PHOENIX P68 (DLF,HYF,IEF)

BMIS
372
BIIS
452
CHBS
126

BOWLING 3027 DOMINO 212Z (DLF,HYF,IEF) UPS DOMINO 3027 (SOD)(DLF,HYF,IEF,MSUDF,MDF)
 BH MISS RIB DOM 6119 (DLF,HYF,IEF) _D 5104 LADY DOM ADV 005
 43814002 BH LADY RIB 4217B ET (DLF,HYF,IEF) K 64H RIBSTONE LAD 157K (SOD)(CHB)(DLF,HYF,IEF)
 CHURCHILL LADY 7204T (DLF,HYF,IEF)

CE	BW	WW	YW	DMI	SC	SCF	MM	M&G
4.3	2.8	52	85	0.0	0.9	17.5	24	50
CEM	MCW	UDDR	TEAT	CW	FAT	REA	MARB	
6.8	79	1.40	1.40	63	0.034	0.30	0.26	

- Top 5% for UDDR; Top 10% for MCE and TEAT; Top 15% for MARB; Top 20% for CHB



Lot 7 – BH Consultant C36 914G

LOT 8 BULL

BH MAGGIE 712 934G

P43998883 – Calved: 3/6/19 – Tattoo: 934

GERBER ANODYNE 001A (CHB)(DLF,HYF,IEF,MSUDF) KCF BENNETT 9126J R294 (SOD)(DLF,IEF)
 SHF EARLY RISER 001A E309 ET (CHB)(DLF,HYF,IEF) GERBER 627S HOLLY 096Y (DLF,HYF,IEF)
 P43793720 SHF MAGGIE LG Z161 (DLF,HYF,IEF,MSUDF) SHF KENNEDY 502R X36 (DLF,HYF,IEF,MDF)
 SHF MAGGIE T57 W74 (DLF,HYF,IEF,MSUDF)

BMIS
362
BIIS
452
CHBS
126

BR JOE DOMINO 1014 ET (DLF,HYF,IEF) CL 1 DOMINO 955W (SOD)(CHB)(DLF,HYF,IEF)
 BH JOSIE LADY 329 712 BR GABRIELLE 5082 (DLF,HYF,IEF)
 43815577 BOWLING LADY 329 A _D 408 MR HARLAND 410 134X ET (DLF,HYF,IEF)
 EE MS ADVANCE 4055 654 957

CE	BW	WW	YW	DMI	SC	SCF	MM	M&G
0.5	3.9	66	101	0.5	1.2	16.6	27	60
CEM	MCW	UDDR	TEAT	CW	FAT	REA	MARB	
3.5	95	1.50	1.50	71	0.004	0.42	0.23	

- Top growth out of another highly productive young dam with a WW ratio of 108 on 2 head. Just look at his IMF ratio!
- Top 1% for UDDR; Top 5% for WW and TEAT; Top 15% for YW, MG and MARB; Top 20% for CHB; Top 25% for CW.
- WW ratio: 106 IMF ratio: 122

LOT 9 BULL

BH EARLY RISER E309 933

P44153973 – Calved: 3/2/19 – Tattoo: 933

GERBER ANODYNE 001A (CHB)(DLF,HYF,IEF,MSUDF) KCF BENNETT 9126J R294 (SOD)(DLF,IEF)
 SHF EARLY RISER 001A E309 ET (CHB)(DLF,HYF,IEF) GERBER 627S HOLLY 096Y (DLF,HYF,IEF)
 P43793720 SHF MAGGIE LG Z161 (DLF,HYF,IEF,MSUDF) SHF KENNEDY 502R X36 (DLF,HYF,IEF,MDF)
 SHF MAGGIE T57 W74 (DLF,HYF,IEF,MSUDF)

BMIS
380
BIIS
463
CHBS
123

BH OKLA TRUSTWORTHY 3055 ET (DLF,HYF,IEF) NJW 73S M326 TRUST 100W ET (SOD)(CHB)(DLF,HYF,IEF,MSUDF,MDF)
 BH TRUSTING LADY 3055 6146 CHURCHILL LADY 7204T (DLF,HYF,IEF)
 P43814041 UPS MISS UPTOWN 3843 ET (DLF,HYF,IEF) UPS UPTOWN ET (DLF,HYF,IEF)
 UPS MISS NITRO 9328 1ET (DLF,HYF,IEF)

CE	BW	WW	YW	DMI	SC	SCF	MM	M&G
-0.8	3.9	62	100	0.3	1.1	17.8	27	58
CEM	MCW	UDDR	TEAT	CW	FAT	REA	MARB	
2.2	101	1.30	1.30	69	-0.006	0.43	0.17	

- Top 15% for WW, YW and UDDR; Top 20% for TEAT and CHB; Top 25% for MG and MARB.
- YW ratio: 102

LOT 10 BULL

BH MR CHIVAS 355 927

44070447 – Calved: 2/26/19 – Tattoo: 927

C CJCLR REGAL 3174 ET (DLF,HYF,IEF,MSUDF,MDC) NJW 73S W18 HOMETOWN 10Y ET (SOD)(CHB)(DLF,HYF,IEF,MSUDF,MDC)
 CJCKS 89Y CHIVAS REGAL ET (DLF,HYF,IEF,MSUDF,MDC) C MS MOLER 6214 ET (DLF,HYF,IEF)
 43741242 TH 16G 20N GEMINI 89T (DLF,HYF,IEF) NPH 20X SPARTAN 20N (SOD)(DLF,HYF,IEF)
 TEE-JAY 707B GEMINI 16G ET

BMIS
322
BIIS
396
CHBS
133

_D 408 MR HARLAND 410 134X ET (DLF,HYF,IEF) CJH HARLAND 408 (SOD)(DLF,HYF,IEF,MSUDF,MDF)
 BOWLING LADY 355 A MCR 552 GOLD DOMINET 410 ET (DLF,HYF,IEF)
 43453982 _D 285 QUEENIE 702 - 969 CL 1 DOMINO 285M (SOD)(DLF,HYF,IEF)
 LONK QUEEN 0702

CE	BW	WW	YW	DMI	SC	SCF	MM	M&G
2.9	4.2	58	94	0.3	1.1	13.2	26	55
CEM	MCW	UDDR	TEAT	CW	FAT	REA	MARB	
2.6	107	1.30	1.30	80	0.014	0.57	0.14	

- MDP
- His dam has production WW ratio of 109 on 5 head.
- Top 10% for CW and CHB; Top 15% for UDDR and REA; Top 20% for TEAT; Top 25% for YW.



Lot 10 – BH Mr Chivas 355 927

HEREFORD SPRING TWO-YEAR-OLD BULLS



Lot 12 - BH Chivas D62 920



Lot 13 - BH CH Chivas D62 918



Lot 14 - C Sull Who Maker 9258 ET

LOT 11 BULL **B CHIVAS 784 945**
 44214111 - Calved: 2/18/19 - Tattoo: 945

C CJC ILR REGAL 3174 ET (DLF,HVF,IEF,MSUDF,MODC) NJW 73S W18 HOMETOWN 10Y ET (SOD)(CHB)(DLF,HVF,IEF,MSUDF,MODC)
 CJC KS 89T CHIVAS REGAL ET (DLF,HVF,IEF,MSUDF,MODC) C MS MOLER 6214 ET (DLF,HVF,IEF)
 43741242 TH 16G 20N GEMINI 89T (DLF,HVF,IEF) NPH 20X SPARTAN 20N (SOD)(DLF,HVF,IEF)
 TEE-JAY 707B GEMINI 16G ET

CHURCHILL LHF BAKKEN 4150B (DLF,HVF,IEF,MSUDF) SR BAKKEN 6Z2 (DLF,HVF,IEF)
 BH MS BAKKEN 4150 784 CHURCHILL LADY 1160Y ET (DOD)(DLF,HVF,IEF)
 43842208 UPS MISS NITRO 1023 UPS TCC NITRO 1ET (SOD)(CHB)(DLF,HVF,IEF)
 UPS MISS ODYSSEY 6341

CE	BW	WW	YW	DMI	SC	SCF	MM	M&G
1.8	4.2	57	99	0.6	1.2	10.8	22	50
CEM	MCW	UDDR	TEAT	CW	FAT	REA	MARB	
1.2	128	1.20	1.20	77	0.014	0.53	0.10	

BMSI 277
 BISI 345
 CHBS 123

- MDP
- Top 10% for YW; Top 15% for FAT; Top 20% for SC; Top 25% for WW and CW.

LOT 12 BULL **BH CHIVAS D62 920**
 44070444 - Calved: 2/23/19 - Tattoo: 920

C CJC ILR REGAL 3174 ET (DLF,HVF,IEF,MSUDF,MODC) NJW 73S W18 HOMETOWN 10Y ET (SOD)(CHB)(DLF,HVF,IEF,MSUDF,MODC)
 CJC KS 89T CHIVAS REGAL ET (DLF,HVF,IEF,MSUDF,MODC) C MS MOLER 6214 ET (DLF,HVF,IEF)
 43741242 TH 16G 20N GEMINI 89T (DLF,HVF,IEF) NPH 20X SPARTAN 20N (SOD)(DLF,HVF,IEF)
 TEE-JAY 707B GEMINI 16G ET

BR JOE DOMINO 1014 ET (DLF,HVF,IEF) CL 1 DOMINO 955W (SOD)(CHB)(DLF,HVF,IEF)
 BOWLING LADY JOSIE 1014 467A BR GABRIELLE 508Z (DLF,HVF,IEF)
 43485334 _D_5104 LADY DOM ADV 011 MCR 8020 GOLD DOMINO 5104 ET
 LONK MS ULTIMATE 0758

CE	BW	WW	YW	DMI	SC	SCF	MM	M&G
-0.5	5.3	56	105	0.5	0.9	12.1	22	50
CEM	MCW	UDDR	TEAT	CW	FAT	REA	MARB	
-0.6	115	1.30	1.30	75	0.004	0.57	0.05	

BMSI 294
 BISI 359
 CHBS 122

- MDP
- Top 10% for YW; Top 15% for UDDR and REA; Top 20% for TEAT and CW; Top 25% for CHB.
- YW ratio: 114 REA ratio: 105

LOT 13 BULL **BH CH CHIVAS D62 918**
 44070442 - Calved: 2/18/19 - Tattoo: 918

C CJC ILR REGAL 3174 ET (DLF,HVF,IEF,MSUDF,MODC) NJW 73S W18 HOMETOWN 10Y ET (SOD)(CHB)(DLF,HVF,IEF,MSUDF,MODC)
 CJC KS 89T CHIVAS REGAL ET (DLF,HVF,IEF,MSUDF,MODC) C MS MOLER 6214 ET (DLF,HVF,IEF)
 43741242 TH 16G 20N GEMINI 89T (DLF,HVF,IEF) NPH 20X SPARTAN 20N (SOD)(DLF,HVF,IEF)
 TEE-JAY 707B GEMINI 16G ET

NJW 73S M326 TRUST 100W ET (SOD)(CHB)(DLF,HVF,IEF,MSUDF,MODF) KCF BENNETT 3008 M326 (SOD)(DLF,HVF,IEF,MODF)
 BOWLING LADY TRUST 100W 429 B NJW P606 72N DAYDREAM 73S (DLF,HVF,IEF,MSUDF,MODF)
 P43617258 EE MS ADVANCE 571 4239 973 (DLF,HVF,IEF) L1 DOMINO 03571 (SOD)(DLF,HVF,IEF)
 EE MS 0024 L1 4239

CE	BW	WW	YW	DMI	SC	SCF	MM	M&G
1.1	4.1	56	88	0.3	1.1	15.9	26	54
CEM	MCW	UDDR	TEAT	CW	FAT	REA	MARB	
1.3	115	1.30	1.30	78	-0.006	0.66	0.11	

BMSI 362
 BISI 432
 CHBS 129

- MDP
- Great carcass and maternal prospect. 918's young dam is automatic with a WW production ratio of 105 on 4 head.
- Top 5% for UDDR and REA; Top 10% for CW; Top 15% for FAT and CHB; Top 20% for TEAT.
- WW ratio: 105 REA ratio: 111

LOT 14 BULL **C SULL WHO MAKER 9258 ET**
 44019292 - Calved: 3/2/19 - Tattoo: 9258

DKF RO CASH FLOW 0245 ET (SOD)(DLF,HVF,IEF) CRR ABOUT TIME 743 (SOD)(DLF,HVF,IEF,MODF)
 ECR WHO MAKER 210 ET (DLF,HVF,IEF) JRR MISS TOBEY 711T (DLF,HVF,IEF)
 P43314663 RV GOLDEN LADY 5064 (DLF,HVF,IEF) K&B DOMINO 2570
 RV MS GOLD DUST 3064 (DOD)

H EXCEL 8051 ET (DLF,HVF,IEF) GO EXCEL L18 (SOD)(DLF,HVF,IEF)
 SULL TCC MS HARLEY 322 ET (DLF,HVF,IEF) H LADY GOLD 323
 P43412201 LCC TWO TIMIN 438 ET (DLF,HVF,IEF) REMITALL ONLINE 122L (SOD)(CHB)(DLF,HVF,IEF)
 RST ROF REBA 28H

CE	BW	WW	YW	DMI	SC	SCF	MM	M&G
-0.3	3.9	54	84	0.1	0.8	12.9	31	58
CEM	MCW	UDDR	TEAT	CW	FAT	REA	MARB	
0.9	115	1.20	1.20	75	-0.006	0.61	-0.06	

BMSI 310
 BISI 366
 CHBS 111

- Top 10% for REA; Top 15% for MM; Top 20% for CW; Top 25% for MG
- REA ratio: 110 IMF ratio: 109

Hereford Breed Avg. EPDs

CE	BW	WW	YW	DMI	SC	SCF	MM	M&G	MCE	MCW	UDDR	TEAT	CW	FAT	REA	MARB	BMSI	BISI	CHBS
2.5	2.9	52	84	0.1	0.9	16.4	24	51	1.8	89	1.23	1.24	66	0.013	0.37	0.10	348	416	111

HEREFORD FALL 18-MONTH-OLD BULLS

LOT 15 BULL

B BELLE AIR 4038 9221 ET

44214109 – Calved: 8/28/19 – Tattoo: 9221

BR BELLE AIR 6011 (DLF,HYF,IEF,MSUDF)
43724674 BR BELLE 4082 ET (DLF,HYF,IEF,MSUDF)



CL 1 DOMINO 105Y (SOD)(DLF,HYF,IEF)
C 105Y LADY DOMINO 4038 (DLF,HYF,IEF)
43469644 C 88X NOTICE ME 1311 ET (DLF,HYF,IEF)

CHURCHILL SENSATION 028X (SOD)(DLF,HYF,IEF,MDF)
CHURCHILL LADY 078X (DLF,HYF,IEF)
GOLDEN OAK OUTCROSS 18U (SOD)(CHB)(DLF,HYF,IEF,MSUDF)
BR CSF BRIELLE 8052 ET (DLF,HYF,IEF)

BMSI
410
BIIS
501
CHBS
139

CE	BW	WW	YW	DMI	SC	SCF	MM	M&G
6.8	1.0	62	96	0.1	1.8	19.0	44	74
CEM	MCW	UDDR	TEAT	CW	FAT	REA	MARB	
5.0	75	1.30	1.20	74	0.044	0.39	0.27	

- As we kick off our Fall division, these first four bulls are out of the 4038 donor cow we purchased ½ interest in from Colyer Herefords. She is a moderate, deep bodied cow with a tremendous udder. Expect these sons to sire some tremendous replacement females.
- Recommended for heifers.
- Top 1% for MM and MG; Top 5% for MARB, SC, BMI and BI; Top 10% for SCF and CHB; Top 15% for CE, BW, MCE, MCW and UDDR; Top 20% for TEAT.



C 105Y Lady Domino 4038

LOT 16 BULL

BH 15B MR CANADA 4038 9207G ET

P44053397 – Calved: 6/2/19 – Tattoo: 9207

WLB WINCHESTER ANSER 90X 10Z (DLF,HYF,IEF)
WLB MR CANADA 10Z 15B (DLF,HYF,IEF,MSUDF)
P43780622 REMITALL GRAVES JUNO 204S (DLF,HYF,IEF,MSUDF)



CL 1 DOMINO 105Y (SOD)(DLF,HYF,IEF)
C 105Y LADY DOMINO 4038 (DLF,HYF,IEF)
43469644 C 88X NOTICE ME 1311 ET (DLF,HYF,IEF)

WLB LEGO 83T 90X (CHB)(DLF,HYF,IEF)
WLB 69T JUST LOVELY 84X (DLF,HYF,IEF)
REMITALL NATION WIDE ET 93N (SOD)
REMITALL JUNO 64N

BMSI
416
BIIS
497
CHBS
110

CE	BW	WW	YW	DMI	SC	SCF	MM	M&G
8.8	1.3	62	100	0.4	0.5	21.3	42	73
CEM	MCW	UDDR	TEAT	CW	FAT	REA	MARB	
6.2	70	1.50	1.40	66	0.014	0.25	0.09	

- Great spread on these next three full brothers. They are heifer approved and the calves will hit the ground running.
- Top 1% for MM and MG; Top 5% for UDDR; Top 10% for SCF and TEAT; Top 15% for CE, MCE, MCW, BMI and BI; Top 20% for BW; Top 25% for YW.



Lot 16 – BH 15B Mr Canada 4038 9207G ET

LOT 17 BULL

BH 15B MR CANADA 4038 9208G ET

P44053399 – Calved: 6/5/19 – Tattoo: 9208

WLB WINCHESTER ANSER 90X 10Z (DLF,HYF,IEF)
WLB MR CANADA 10Z 15B (DLF,HYF,IEF,MSUDF)
P43780622 REMITALL GRAVES JUNO 204S (DLF,HYF,IEF,MSUDF)



CL 1 DOMINO 105Y (SOD)(DLF,HYF,IEF)
C 105Y LADY DOMINO 4038 (DLF,HYF,IEF)
43469644 C 88X NOTICE ME 1311 ET (DLF,HYF,IEF)

WLB LEGO 83T 90X (CHB)(DLF,HYF,IEF)
WLB 69T JUST LOVELY 84X (DLF,HYF,IEF)
REMITALL NATION WIDE ET 93N (SOD)
REMITALL JUNO 64N

BMSI
398
BIIS
478
CHBS
99

CE	BW	WW	YW	DMI	SC	SCF	MM	M&G
10.3	2.0	64	107	0.4	0.4	20.6	40	72
CEM	MCW	UDDR	TEAT	CW	FAT	REA	MARB	
7.0	70	1.40	1.50	60	0.024	0.29	0.04	



Lot 17 – BH 15B Mr Canada 4038 9208G ET

HEREFORD FALL 18-MONTH-OLD BULLS



Lot 18 – BH 15B Mr Canada 4038 9213G ET

LOT 18 BULL

BH 15B MR CANADA 4038 9213G ET

P44053388 – Calved: 6/6/19 – Tattoo: 9213

WLB WINCHESTER ANSER 90X 10Z (DLF,HYF,IEF) WLB LEGO 83T 90X (CHB)(DLF,HYF,IEF)
 WLB MR CANADA 10Z 15B (DLF,HYF,IEF,MSUDF) WLB 69T JUST LOVELY 84X (DLF,HYF,IEF)
 P43780622 REMITTALL GRAVES JUNO 204S (DLF,HYF,IEF,MSUDF) REMITTALL NATION WIDE ET 93N (SOD)
 REMITTALL JUNO 64N

CL 1 DOMINO 105Y (SOD)(DLF,HYF,IEF) CL 1 DOMINO 929W (DLF,HYF,IEF)
 C 105Y LADY DOMINO 4038 (DLF,HYF,IEF) CL 1 DOMINETTE 9140W 1ET (SOD)(DLF,HYF,IEF)
 43469644 C 88X NOTICE ME 1311 ET (DLF,HYF,IEF) NJW 98S R117 RIBEYE 88X ET (SOD)(DLF,HYF,IEF,MSUDF,MDF)
 C NOTICE ME ET (DLF,HYF,IEF)

BMIS
430
BIIS
504
CHBS
102

CE	BW	WW	YW	DMI	SC	SCF	MM	M&G
8.0	1.7	58	94	0.3	0.4	22.4	41	70
CEM	MCW	UDDR	TEAT	CW	FAT	REA	MARB	
5.9	70	1.40	1.40	65	0.024	0.40	0.04	



Lot 19 – BH Belle Air 204S 9215G ET

LOT 19 BULL

BH BELLE AIR 204S 9215G ET

44032080 – Calved: 6/9/19 – Tattoo: 9215

BAR S LHF 028 240 (DLF,HYF,IEF) CHURCHILL SENSATION 028X (SOD)(DLF,HYF,IEF,MDF)
 BR BELLE AIR 6011 (DLF,HYF,IEF,MSUDF) CHURCHILL LADY 078X (DLF,HYF,IEF)
 43724674 BR BELLE 4082 ET (DLF,HYF,IEF,MSUDF) GOLDEN OAK OUTCROSS 18U (SOD)(CHB)(DLF,HYF,IEF,MSUDF)
 BR CSF BRIELLE 8052 ET (DLF,HYF,IEF)

REMITALL NATION WIDE ET 93N (SOD) REMITTALL KEYNOTE 20X (SOD)(CHB)
 REMITTALL GRAVES JUNO 204S (DLF,HYF,IEF,MSUDF) REMITTALL CATALINA 24H
 P43738083 REMITTALL JUNO 64N REMITTALL ONLINE 122L (SOD)(CHB)(DLF,HYF,IEF)
 REMITTALL JUNO 244L

BMIS
331
BIIS
422
CHBS
124

CE	BW	WW	YW	DMI	SC	SCF	MM	M&G
3.9	2.5	61	102	0.2	2.0	14.7	37	68
CEM	MCW	UDDR	TEAT	CW	FAT	REA	MARB	
-0.1	101	1.30	1.40	60	0.044	0.27	0.31	

- This Belle Air son out of a top Remittal donor cow is moderate for birthweight with a big spread to his growth with top maternal.
- Top 1% for SC; Top 2% for MM and MG; Top 10% for TEAT and MARB; Top 15% for YW and UDDR; Top 20% for WW and CHB.



Bowling Ranch commercial heifers out on wheat



Remittal Graves Juno 204S

Hereford Breed Avg. EPDs

CE	BW	WW	YW	DMI	SC	SCF	MM	M&G	MCE	MCW	UDDR	TEAT	CW	FAT	REA	MARB	BMIS	BIIS	CHBS
2.5	2.9	52	84	0.1	0.9	16.4	24	51	1.8	89	1.23	1.24	66	0.013	0.37	0.10	348	416	111

HEREFORD FALL 18-MONTH-OLD BULLS

LOT 20 BULL

B ANODYNE 217 9224 ET

P44221443 – Calved: 8/24/19 – Tattoo: LE 9224/RE 0224

KCF BENNETT 9126J R294 (SOD)(DLF,IEF)
GERBER ANODYNE 001A (CHB)(DLF,HYF,IEF,MSUDF)
P43408924 GERBER 627S HOLLY 096Y (DLF,HYF,IEF)

CL 1 DOMINO 9126J 1ET (SOD)(CHB)(DLF,IEF)
KCF MISS 3008 N344 (DLF,HYF,IEF,MSUDF)
GERBER SQUIRE 627S (CHB)
GERBER 116K HOLLY T115

BMI\$
308
BI\$
392
CHB\$
154

CHURCHILL RANCHER 592R (SOD)(DLF,IEF)
MCR RANCHER 408 DOMINET 217 ET (DLF,HYF,IEF,MSUDF)
43326775 MCR HARLANDS DOMINET 682ET (DLF,HYF,IEF)

MH DAKOTA 0230 (SOD)(DLF,HYF,IEF)
CHURCHILL LADY 202 (DLF,HYF,IEF)
CJH HARLAND 408 (SOD)(DLF,HYF,IEF,MSUDF,MDF)
PPF MCR MARK DOMINET 191

CE	BW	WW	YW	DMI	SC	SCF	MM	M&G
6.5	2.7	61	101	0.3	1.0	11.3	28	58
CEM	MCW	UDDR	TEAT	CW	FAT	REA	MARB	
7.0	111	1.25	1.30	84	0.019	0.57	0.27	

- This is the first Anodyne we've offered, and he's out of a top Mill Creek donor cow. Great performance across the board.
- Top 2% for CHB; Top 4% for CW; Top 10% for MCE and MARB; Top 15% for YW; Top 20% for CE, WW and REA; Top 25% for MG.



Lot 20 – B Anodyne 217 9224 ET

LOT 21 BULL

B CUDAS DAWN E109 9165G

44217397 – Calved: 9/9/19 – Tattoo: 9165

ILR RED POWER 456B (DLF,HYF,IEF,MSUDF,MDF)
APH RED DAWN E100ET (DLF,HYF,IEF,MSUDF)
P43965774 NJW P606 72N DAYDREAM 73S (DLF,HYF,IEF,MSUDF,MDF)

CHURCHILL RED BULL 200Z (SOD)(CHB)(DLF,HYF,IEF,MSUDF,MDF)
KCF MISS PROFICIENT U201 (DLF,HYF,IEF,MSUDF,MDF)
PW VICTOR BOOMER P606 (SOD)(DLF,HYF,IEF,MDF)
NJW 94J DEW 72N (DLF,HYF,IEF)

BMI\$
464
BI\$
538
CHB\$
120

BEHM 100W CUDA 504C (CHB)(DLF,HYF,IEF,MSUDF,MDF)
APH MISS CUDA TARGET E109
P43962185 HYALITE 22S LASS 108 (DLF,HYF,IEF)

NJW 73S M326 TRUST 100W ET (SOD)(CHB)(DLF,HYF,IEF,MSUDF,MDF)
BEHM R294 JASMAN 102Y (DOD)(DLF,HYF,IEF,MSUDF)
SCHU-LAR ON TARGET 22S (SOD)(DLF,HYF,IEF,MSUDF)
HYALITE P20 LASS 710 (DOD)

CE	BW	WW	YW	DMI	SC	SCF	MM	M&G
6.1	1.1	58	95	0.2	1.8	23.4	38	67
CEM	MCW	UDDR	TEAT	CW	FAT	REA	MARB	
3.0	93	1.40	1.40	68	-0.021	0.65	0.06	

- We purchased 9102's Cuda dam as a bred heifer and this great polled bull is the result. He's heifer safe and is a trait leader for many of his traits.
- Top 1% for SC; Top 2% for MM; Top 3% for MG and BMI; Top 4% for SCF; Top 5% for UDDR and BII; Top 10% for TEAT, FAT and REA; Top 15% for BW; Top 25% for CE, YW and CHB.

LOT 22 BULL

BH BLACK HAWK 3022 9117

44167458 – Calved: 9/21/19 – Tattoo: 9117

WLB WINCHESTER POWERBALL 27A
C BLACK HAWK DOWN ET (DLF,HYF,IEF,MSUDF)
P43576699 BR BAILEE 1066 ET (DLF,HYF,IEF)

WLB LEGO 83T 90X (CHB)(DLF,HYF,IEF)
WLB 503W ALICE ET 8401Y
DM BR SOONER (CHB)(DLF,HYF,IEF)
BR GABRIELLE 5082 (DLF,HYF,IEF)



CHURCHILL DOMINO 1197Y ET (DLF,HYF,IEF)
BOWLING LADY 1150Y 3022 ZZ (DLF,HYF,IEF)
43484884 MCR HARLANDS MS 9124 014 ET

CL 1 DOMINO 955W (SOD)(CHB)(DLF,HYF,IEF)
CHURCHILL LADY 8168U (DLF,HYF,IEF)
CJH HARLAND 408 (SOD)(DLF,HYF,IEF,MSUDF,MDF)
PPF MCR MS DOM 9124

BMI\$
408
BI\$
478
CHB\$
121

CE	BW	WW	YW	DMI	SC	SCF	MM	M&G
4.8	2.3	47	70	0.1	0.8	20.0	23	47
CEM	MCW	UDDR	TEAT	CW	FAT	REA	MARB	
3.3	82	1.40	1.40	74	0.044	0.39	0.15	

- Recommended for heifers
- Top 10% for CE; Top 15% for CW and CHB; Top 20% for MCE; Top 25% for BW.

LOT 23 BULL

B BLACK HAWK 4129 9223 ET

44214110 – Calved: 8/27/19 – Tattoo: 9223

WLB WINCHESTER POWERBALL 27A
C BLACK HAWK DOWN ET (DLF,HYF,IEF,MSUDF)
P43576699 BR BAILEE 1066 ET (DLF,HYF,IEF)

WLB LEGO 83T 90X (CHB)(DLF,HYF,IEF)
WLB 503W ALICE ET 8401Y
DM BR SOONER (CHB)(DLF,HYF,IEF)
BR GABRIELLE 5082 (DLF,HYF,IEF)

BMI\$
440
BI\$
521
CHB\$
129

NJW 98S R117 RIBEYE 88X ET (SOD)(DLF,HYF,IEF,MSUDF,MDF)
C 88X 7050 RIBEYE LADY 4129 ET (DLF,HYF,IEF)
43469732 C MS PURE ADV 7050 ET (DLF,HYF,IEF)

SHF RIB EYE M326 R117 (SOD)(DLF,HYF,IEF)
NJW 9126J DEW DOMINO 98S (DOD)(DLF,HYF,IEF)
C-S PURE GOLD 98170 (SOD)(CHB)(DLF,HYF,IEF)
HH MISS ADVANCE 104A (DOD)

CE	BW	WW	YW	DMI	SC	SCF	MM	M&G
12.2	1.1	47	68	0.0	1.3	21.9	26	50
CEM	MCW	UDDR	TEAT	CW	FAT	REA	MARB	
5.9	70	1.40	1.50	62	0.024	0.45	0.33	

- The next three bulls are ET's out of one of the top Hereford cows we've laid eyes on. She's a deep bodied, goggle eye'd with a picture perfect udder. 23 and 24 are full brothers that will sire an outstanding set of baldie females and the steer mates will gather all the premiums.
- Top 10% for REA and CHB; Top 15% for MCW, UDDR, FAT, BMI and BII; Top 20% for SCF, MM, TEAT, CW and MARB; Top 25% for CE.



Lot 23 – B Black Hawk 4129 9223 ET

HEREFORD FALL 18-MONTH-OLD BULLS



C 88X 7050 Ribeye Lady 4129 ET

LOT 24 BULL

B BLACK HAWK 4129 9222 ET

44214108 – Calved: 8/27/19 – Tattoo: 9222

WLB WINCHESTER POWERBALL 27A
C BLACK HAWK DOWN ET (DLF,HYF,IEF,MSUDF)
P43576699 BR BAILEE 1066 ET (DLF,HYF,IEF)

WLB LEGO 83T 90X (CHB)(DLF,HYF,IEF)
WLB 503W ALICE ET 8401Y
DM BR SOONER (CHB)(DLF,HYF,IEF)
BR GABRIELLE 5082 (DLF,HYF,IEF)

NJW 98S R117 RIBEYE 88X ET (SOD)(DLF,HYF,IEF,MSUDF,MDF)
C 88X 7050 RIBEYE LADY 4129 ET (DLF,HYF,IEF)
43469732 C MS PURE ADV 7050 ET (DLF,HYF,IEF)

SHF RIB EYE M326 R117 (SOD)(DLF,HYF,IEF)
NJW 9126J DEW DOMINO 98S (SOD)(DLF,HYF,IEF)
C-S PURE GOLD 98170 (SOD)(CHB)(DLF,HYF,IEF)
HH MISS ADVANCE 104A (DOD)

BMIS
426
BIIS
502
CHBS
135

CE	BW	WW	YW	DMI	SC	SCF	MM	M&G
6.1	2.3	52	74	0.0	1.0	20.2	30	56
CEM	MCW	UDDR	TEAT	CW	FAT	REA	MARB	
2.5	72	1.30	1.30	75	-0.006	0.59	0.20	

LOT 25 BULL

B MIGHTY 4129 9236 ET

44218072 – Calved: 8/28/19 – Tattoo: BE 9236

NJW 67U 28M BIG MAX 22Z (DLF,HYF,IEF,MDF)
NJW 79Z 22Z MIGHTY 49C ET (DLF,HYF,IEF,MSUDF,MDF)
43589057 BW 91H 100W RITA 79Z ET (DLF,HYF,IEF,MSUDF,MDF)

GOLDEN-OAK 4J MAXIUM 28M (SOD)(CHB)(DLF,HYF,IEF)
NJW 4037 80L FAITH 67U (DOD)(DLF,HYF,IEF,MSUDF)
NJW 73S M326 TRUST 100W ET (SOD)(CHB)(DLF,HYF,IEF,MSUDF,MDF)
REMITALL RITA 91H (DLF,HYF,IEF)

BMIS
428
BIIS
503
CHBS
116

NJW 98S R117 RIBEYE 88X ET (SOD)(DLF,HYF,IEF,MSUDF,MDF)
C 88X 7050 RIBEYE LADY 4129 ET (DLF,HYF,IEF)
43469732 C MS PURE ADV 7050 ET (DLF,HYF,IEF)

SHF RIB EYE M326 R117 (SOD)(DLF,HYF,IEF)
NJW 9126J DEW DOMINO 98S (DOD)(DLF,HYF,IEF)
C-S PURE GOLD 98170 (SOD)(CHB)(DLF,HYF,IEF)
HH MISS ADVANCE 104A (DOD)

CE	BW	WW	YW	DMI	SC	SCF	MM	M&G
6.2	1.5	51	77	0.0	1.1	21.5	28	53
CEM	MCW	UDDR	TEAT	CW	FAT	REA	MARB	
2.7	75	1.20	1.20	61	0.014	0.50	0.19	

- Recommended for heifers
- Top 10% for SCF and BMI; Top 15% for BI; Top 20% for CE, BW, MCW and MARB; Top 25% for REA.



LOT 26 BULL

BH E309 RISER 4077 9150G

P44119239 – Calved: 11/19/19 – Tattoo: 9150

GERBER ANODYNE 001A (CHB)(DLF,HYF,IEF,MSUDF)
SHF EARLY RISER 001A E309 ET (CHB)(DLF,HYF,IEF)
P43793720 SHF MAGGIE LG Z161 (DLF,HYF,IEF,MSUDF)

KCF BENNETT 9126J R294 (SOD)(DLF,IEF)
GERBER 627S HOLLY 096Y (DLF,HYF,IEF)
SHF KENNEDY 502R X36 (DLF,HYF,IEF,MDF)
SHF MAGGIE T57 W74 (DLF,HYF,IEF,MSUDF)

BMIS
367
BIIS
456
CHBS
126

UPS SENSATION 2119 (DLF,HYF,IEF)
UPS MISS SENSATION 4077 (DLF,HYF,IEF)
43505570 UPS MISS ABOUT TIME 0353 ET

VIN-MAR RINGER 043 (DLF,HYF,IEF)
UPS MISS SAGA 0241
CRR ABOUT TIME 743 (SOD)(DLF,HYF,IEF,MDF)
UPS MISS NEON 7868 1ET (DLF,HYF,IEF)

CE	BW	WW	YW	DMI	SC	SCF	MM	M&G
1.8	3.3	69	111	0.8	1.1	16.9	27	61
CEM	MCW	UDDR	TEAT	CW	FAT	REA	MARB	
2.6	111	1.30	1.30	78	0.004	0.50	0.17	

- One of the top growth bulls in the entire offering while at breed average for birthweight.
- Top 2% for WW; Top 3% for YW; Top 10% for MG and CW; Top 15% for UDDR; Top 20% for TEAT and CHB; Top 25% for REA and MARB.
- WW ratio: 117

LOT 27 BULL

BH E309 MS RISER 272 9145G

P44119094 – Calved: 11/10/19 – Tattoo: 9145

GERBER ANODYNE 001A (CHB)(DLF,HYF,IEF,MSUDF)
SHF EARLY RISER 001A E309 ET (CHB)(DLF,HYF,IEF)
P43793720 SHF MAGGIE LG Z161 (DLF,HYF,IEF,MSUDF)

KCF BENNETT 9126J R294 (SOD)(DLF,IEF)
GERBER 627S HOLLY 096Y (DLF,HYF,IEF)
SHF KENNEDY 502R X36 (DLF,HYF,IEF,MDF)
SHF MAGGIE T57 W74 (DLF,HYF,IEF,MSUDF)

BMIS
320
BIIS
403
CHBS
125

-D 373N ADVANCE DOM T213 - 006
BOWLING LADY 272 Z (DLF,HYF,IEF)
43315310 JA L1 DOMINETTE 0319X

CL 1 DOMINO 373N (DLF,IEF)
-S LADY ADVANCE DOM 306 T213
JA L1 DOMINO 7640T (SOD)(CHB)(DLF,HYF,IEF)
JA L1 DOMINETTE 5110R

CE	BW	WW	YW	DMI	SC	SCF	MM	M&G
-1.4	4.2	64	98	0.4	1.5	13.7	26	58
CEM	MCW	UDDR	TEAT	CW	FAT	REA	MARB	
4.4	104	1.30	1.40	74	-0.006	0.38	0.18	

- High performance growth bull.
- Top 5% for SC; Top 10% for WW and TEAT; Top 15% for MG, MCE, UDDR, CW and CHB; Top 20% for YW and MARB.
- WW ratio: 123

Hereford Breed Avg. EPDs

CE	BW	WW	YW	DMI	SC	SCF	MM	M&G	MCE	MCW	UDDR	TEAT	CW	FAT	REA	MARB	BMIS	BIIS	CHBS
2.5	2.9	52	84	0.1	0.9	16.4	24	51	1.8	89	1.23	1.24	66	0.013	0.37	0.10	348	416	111

HEREFORD FALL 18-MONTH-OLD BULLS

LOT 28 BULL

BH E309 RISER 3843 9149G

P44119238 – Calved: 11/1/19 – Tattoo: 9149

GERBER ANODYNE 001A (CHB)(DLF,HYF,IEF,MSUDF)
SHF EARLY RISER 001A E309 ET (CHB)(DLF,HYF,IEF)
P43793720 SHF MAGGIE LG Z161 (DLF,HYF,IEF,MSUDF)

KCF BENNETT 9126J R294 (SOD)(DLF,IEF)
GERBER 627S HOLLY 096Y (DLF,HYF,IEF)
SHF KENNEDY 502R X36 (DLF,HYF,IEF,MDF)
SHF MAGGIE T57 W74 (DLF,HYF,IEF,MSUDF)

BMIS
367
BIIS
449
CHBS
119

UPS UPTOWN ET (DLF,HYF,IEF)
UPS MISS UPTOWN 3843 ET (DLF,HYF,IEF)
P43464072 UPS MISS NITRO 9328 1ET (DLF,HYF,IEF)

CRR ABOUTTIME 743 (SOD)(DLF,HYF,IEF,MDF)
UPS MISS NEON 7868 1ET (DLF,HYF,IEF)
UPS TCC NITRO 1ET (SOD)(CHB)(DLF,HYF,IEF)
UPS MISS DOMINO 5903 (DLF,IEF)

CE	BW	WW	YW	DMI	SC	SCF	MM	M&G
-1.9	3.7	60	98	0.3	0.8	17.3	25	55
CEM	MCW	UDDR	TEAT	CW	FAT	REA	MARB	
0.8	105	1.30	1.30	66	-0.006	0.36	0.18	

- Top 15% for YW, UDDR and FAT; Top 20% for WW and TEAT; Top 25% for MARB.



Lot 28 – BH E309 Riser 3843 9149G

LOT 29 BULL

BH PISTOL PETE 7155 9123G

44119274 – Calved: 9/26/19 – Tattoo: 9123

CRR 5280 (DLF,HYF,IEF)
C 2052 5280 LAD 6110 ET (DLF,HYF,IEF,MSUDF)
43672918 C 88X RIBEYE LADY 2052 (DLF,HYF,IEF)

CRR 719 CATAPULT 109 (SOD)(DLF,HYF,IEF,MDF)
CRR 435 KELLY 178 (DOD)(DLF,HYF,IEF)
NJW 98S R117 RIBEYE 88X ET (SOD)(DLF,HYF,IEF,MSUDF,MDF)
C MS OUTCROSS 0201 ET (DLF,HYF,IEF)

BMIS
328
BIIS
408
CHBS
123

BR JOE DOMINO 1014 ET (DLF,HYF,IEF)
BH YANKEE LADY 1014 7155 ET
44050025 MCR JF MS 408 YANKEE 015 (DLF,HYF,IEF)

CL 1 DOMINO 955W (SOD)(CHB)(DLF,HYF,IEF)
BR GABRIELLE 5082 (DLF,HYF,IEF)
CJH HARLAND 408 (SOD)(DLF,HYF,IEF,MSUDF,MDF)
MCR YANKEES DOMINET 831 ET

CE	BW	WW	YW	DMI	SC	SCF	MM	M&G
1.9	4.1	62	93	0.4	1.2	14.4	25	56
CEM	MCW	UDDR	TEAT	CW	FAT	REA	MARB	
0.6	95	1.30	1.30	75	0.014	0.37	0.16	

- Another highly maternal 6110 out of a first calf heifer.
- Top 5% for UDDR; Top 10% for WW and TEAT; Top 15% for YW; Top 20% for SC; Top 25% for MG.
- WW ratio: 102

LOT 30 BULL

B OKIES LAD 7142 9107

44217372 – Calved: 9/10/19 – Tattoo: 9107

CRR 5280 (DLF,HYF,IEF)
C 2052 5280 LAD 6110 ET (DLF,HYF,IEF,MSUDF)
43672918 C 88X RIBEYE LADY 2052 (DLF,HYF,IEF)

CRR 719 CATAPULT 109 (SOD)(DLF,HYF,IEF,MDF)
CRR 435 KELLY 178 (DOD)(DLF,HYF,IEF)
NJW 98S R117 RIBEYE 88X ET (SOD)(DLF,HYF,IEF,MSUDF,MDF)
C MS OUTCROSS 0201 ET (DLF,HYF,IEF)

BMIS
367
BIIS
449
CHBS
131

BH OKLA TRUSTWORTHY 503C ET (DLF,HYF,IEF)
BH OKIE'S LADY 503 7142
43872018 MCR BLUESTEM MARK DOMINET 371 (DLF,HYF,IEF)

NJW 73S M326 TRUST 100W ET (SOD)(CHB)(DLF,HYF,IEF,MSUDF,MDF)
UPS MISS SAGA 1174 ET (DLF,HYF,IEF)
MCR BLUESTEM 977 (DLF,HYF,IEF,MDF)
MCR 860U MARK DOMINET 1215 ET

CE	BW	WW	YW	DMI	SC	SCF	MM	M&G
1.5	4.0	64	106	0.3	1.5	16.4	28	60
CEM	MCW	UDDR	TEAT	CW	FAT	REA	MARB	
3.3	104	1.30	1.25	74	0.004	0.54	0.15	

- Top 5% for SC; Top 10% for WW and YW; Top 15% for UDDR and MG; Top 20% for CW, REA and BII.

LOT 31 BULL

BH E309 RISER 203 9118

P44118963 – Calved: 9/21/19 – Tattoo: 9118

GERBER ANODYNE 001A (CHB)(DLF,HYF,IEF,MSUDF)
SHF EARLY RISER 001A E309 ET (CHB)(DLF,HYF,IEF)
P43793720 SHF MAGGIE LG Z161 (DLF,HYF,IEF,MSUDF)

KCF BENNETT 9126J R294 (SOD)(DLF,IEF)
GERBER 627S HOLLY 096Y (DLF,HYF,IEF)
SHF KENNEDY 502R X36 (DLF,HYF,IEF,MDF)
SHF MAGGIE T57 W74 (DLF,HYF,IEF,MSUDF)

BMIS
419
BIIS
513
CHBS
151

UPS DOMINO 3027 (SOD)(DLF,HYF,IEF,MSUDF,MDF)
MCR 3027 HARLANDS DOMINET 203 (DLF,HYF,IEF)
43324294 MCR HARLAND MS DOMINO 002 (DLF,HYF,IEF)

CL 1 DOMINO 9126J 1ET (SOD)(CHB)(DLF,IEF)
UPS MISS DIAMOND 1353 (DLF,HYF,IEF,MSUDF)
CJH HARLAND 408 (SOD)(DLF,HYF,IEF,MSUDF,MDF)
MCR ADVANCE DOMINET 806 ET

CE	BW	WW	YW	DMI	SC	SCF	MM	M&G
11.4	-0.2	58	90	0.3	1.4	19.3	28	57
CEM	MCW	UDDR	TEAT	CW	FAT	REA	MARB	
10.0	99	1.40	1.40	77	0.024	0.45	0.37	

- The top calving ease Hereford bull in the entire offering with a strong growth and carcass.
- Top 1% for MCE; Top 4% for CE, MARB and CHB; Top 5% for BW and UDDR;
- WW ratio: 103

LOT 32 BULL

BH E309 RISER 0095 9140G

P44119092 – Calved: 9/29/19 – Tattoo: BE 9140

GERBER ANODYNE 001A (CHB)(DLF,HYF,IEF,MSUDF)
SHF EARLY RISER 001A E309 ET (CHB)(DLF,HYF,IEF)
P43793720 SHF MAGGIE LG Z161 (DLF,HYF,IEF,MSUDF)

KCF BENNETT 9126J R294 (SOD)(DLF,IEF)
GERBER 627S HOLLY 096Y (DLF,HYF,IEF)
SHF KENNEDY 502R X36 (DLF,HYF,IEF,MDF)
SHF MAGGIE T57 W74 (DLF,HYF,IEF,MSUDF)

BMIS
404
BIIS
495
CHBS
133

HH ADVANCE 8203U ET (SOD)(DLF,IEF)
HH MISS ADVANCE 0095X (DLF,HYF,IEF)
43074016 HH MISS ADVANCE 7092T ET (DLF,HYF,IEF)

HH ADVANCE 5161R (DLF,IEF)
HH MISS ADVANCE 752G
L1 DOMINO 03571 (SOD)(DLF,HYF,IEF)
HH MISS ADVANCE 1088L (DOD)(DLF,HYF,IEF)

CE	BW	WW	YW	DMI	SC	SCF	MM	M&G
5.4	2.6	50	89	0.1	1.0	20.1	26	51
CEM	MCW	UDDR	TEAT	CW	FAT	REA	MARB	
5.5	65	1.40	1.50	60	0.044	0.06	0.40	

- Recommended for heifers
- Top 3% for MARB; Top 5% for UDDR and TEAT; Top 10% for CHB; Top 15% for MCE, MCW and BII; Top 20% for BMI; Top 25% for CE and SCF.

HEREFORD FALL 18-MONTH-OLD BULLS

LOT 33 BULL

B 88X SAGA 1174 9237 ET

44214107 – Calved: 10/9/19 – Tattoo: 9237

SHF RIB EYE M326 R117 (SOD)(DLF,HYF,IEF) KCF BENNETT 3008 M326 (SOD)(DLF,HYF,IEF,MDF)
 NJW 985 R117 RIBEYE 88X ET (SOD)(DLF,HYF,IEF,MSUDF,MDF) HVH MISS HUDSON 83K 8M
 43094146 NJW 9126J DEW DOMINO 98S (DOD)(DLF,HYF,IEF) CL 1 DOMINO 9126J 1ET (SOD)(CHB)(DLF,IEF)
 SR SAGA 1137 (DLF,HYF,IEF) C JH HARLAND 408 (SOD)(DLF,HYF,IEF,MSUDF,MDF)
 SR ROSA 3125 (DLF,HYF,IEF,MSUDF) NJW 139J DUSTER 47P (DLF,IEF)
 NJW 47P 8D LARIAT 2S (DLF,IEF) NJW 11B LARIAT 8D



UPS MISS SAGA 1174 ET (DLF,HYF,IEF) C JH HARLAND 408 (SOD)(DLF,HYF,IEF,MSUDF,MDF)
 43213311 NJW 47P 8D LARIAT 2S (DLF,IEF) SR ROSA 3125 (DLF,HYF,IEF,MSUDF)
 NJW 139J DUSTER 47P (DLF,IEF) NJW 11B LARIAT 8D

BMSI
404
BIIS
475
CHBS
86

CE	BW	WW	YW	DMI	SC	SCF	MM	M&G
0.5	4.9	59	91	0.2	1.2	21.3	33	63
CEM	MCW	UDDR	TEAT	CW	FAT	REA	MARB	
0.9	74	1.30	1.30	53	-0.016	0.35	-0.01	

- An 88X son out of a top Upstream donor cow. Another bull bred to sire great females.
- Top 15% for SCF and UDDR; Top 20% for MCW, BMI and BI; Top 25% for MM.



C Notice Me Untapped 2212 ET

LOT 34 BULL

BH REGAL 2212 9214G ET

44032079 – Calved: 6/7/19 – Tattoo: 9214

NJW 735 W18 HOMETOWN 10Y ET (SOD)(CHB)(DLF,HYF,IEF,MSUDF,MDC) SHF WONDER M326 W18 ET (SOD)(CHB)(DLF,HYF,IEF,MDC)
 C J C I L R REGAL 3174 ET (DLF,HYF,IEF,MSUDF,MDC) NJW P606 72N DAYDREAM 73S (DLF,HYF,IEF,MSUDF,MDF)
 43386550 C MS MOLER 6214 ET (DLF,HYF,IEF) BR MOLER ET (DLF,IEF)
 C NOTICE ME NOW ET (DLF,HYF,IEF)

TH 89T 743 UNTAPPED 425X ET (DLF,HYF,IEF) CRR ABOUT TIME 743 (SOD)(DLF,HYF,IEF,MDF)
 C NOTICE ME UNTAPPED 2212 ET (DLF,HYF,IEF) TH 16G 20N GEMINI 89T (DLF,HYF,IEF)
 P43298479 C NOTICE ME ET (DLF,HYF,IEF) C-S PURE GOLD 98170 (SOD)(CHB)(DLF,HYF,IEF)
 HH MISS ADVANCE 104A (DOD)

BMSI
340
BIIS
407
CHBS
116

CE	BW	WW	YW	DMI	SC	SCF	MM	M&G
0.1	4.5	55	86	0.1	1.0	15.0	28	56
CEM	MCW	UDDR	TEAT	CW	FAT	REA	MARB	
-0.3	123	1.20	1.20	70	-0.016	0.49	0.06	

- MDP
- Top 10% for FAT; Top 25% for REA.



Lot 34 – BH D62 Chivas 6130 9160G

LOT 35 BULL

BH D62 CHIVAS 6130 9160G

44119250 – Calved: 10/25/19 – Tattoo: 9160

C J C I L R REGAL 3174 ET (DLF,HYF,IEF,MSUDF,MDC) NJW 735 W18 HOMETOWN 10Y ET (SOD)(CHB)(DLF,HYF,IEF,MSUDF,MDC)
 C J C K S 89T CHIVAS REGAL ET (DLF,HYF,IEF,MSUDF,MDC) C MS MOLER 6214 ET (DLF,HYF,IEF)
 43741242 TH 16G 20N GEMINI 89T (DLF,HYF,IEF) NPH 20X SPARTAN 20N (SOD)(DLF,HYF,IEF)
 TEE-JAY 707B GEMINI 16G ET

BH OKLA TRUSTWORTHY 3055 ET (DLF,HYF,IEF) NJW 735 M326 TRUST 100W ET (SOD)(CHB)(DLF,HYF,IEF,MSUDF,MDF)
 BH LADY TRUST 3055 6130 CHURCHILL LADY 7204T (DLF,HYF,IEF)
 43814035 BOWLING SENSATION VIA UPS 349A CHURCHILL SENSATION 028X (SOD)(DLF,HYF,IEF,MDF)
 UPS MISS SAGA 1174 ET (DLF,HYF,IEF)

BMSI
361
BIIS
437
CHBS
122

CE	BW	WW	YW	DMI	SC	SCF	MM	M&G
2.6	3.8	63	95	0.4	1.4	16.0	30	61
CEM	MCW	UDDR	TEAT	CW	FAT	REA	MARB	
1.9	127	1.20	1.20	79	0.014	0.63	0.08	

- MDP
- Top 10% for SC, CW and REA; Top 15% for WW and MG; Top 20% for MM; Top 25% for YW.
- WW ratio: 118

LOT 36 BULL

BH D62 CHIVAS 7207 9128G

44119266 – Calved: 10/4/19 – Tattoo: 9128

C J C I L R REGAL 3174 ET (DLF,HYF,IEF,MSUDF,MDC) NJW 735 W18 HOMETOWN 10Y ET (SOD)(CHB)(DLF,HYF,IEF,MSUDF,MDC)
 C J C K S 89T CHIVAS REGAL ET (DLF,HYF,IEF,MSUDF,MDC) C MS MOLER 6214 ET (DLF,HYF,IEF)
 43741242 TH 16G 20N GEMINI 89T (DLF,HYF,IEF) NPH 20X SPARTAN 20N (SOD)(DLF,HYF,IEF)
 TEE-JAY 707B GEMINI 16G ET



C MILES MCKEE 2103 ET (DLF,HYF,IEF,MSUDF,MDF) NJW 98S R117 RIBEYE 88X ET (SOD)(DLF,HYF,IEF,MSUDF,MDF)
 BH MS MILES DOMINETTE 7207 ET C NOTICE ME ET (DLF,HYF,IEF)
 43839162 CL 1 DOMINETTE 812U 1ET (DLF,HYF,IEF) CL 1 DOMINO 9126J 1ET (SOD)(CHB)(DLF,IEF)
 CL 1 DOMINETTE 446P (DOD)

BMSI
413
BIIS
480
CHBS
132

CE	BW	WW	YW	DMI	SC	SCF	MM	M&G
3.2	4.5	45	76	0.0	1.1	19.7	24	46
CEM	MCW	UDDR	TEAT	CW	FAT	REA	MARB	
2.6	95	1.30	1.20	74	-0.006	0.40	0.16	

- MDP
- Out of a high performing 1st calf Miles McKee x 812U daughter.
- Top 10% for FAT; Top 20% for TEAT; Top 25% for MM, REA and CHB.
- WW ratio: 108

Hereford Breed Avg. EPDs

CE	BW	WW	YW	DMI	SC	SCF	MM	M&G	MCE	MCW	UDDR	TEAT	CW	FAT	REA	MARB	BMSI	BIIS	CHBS
2.5	2.9	52	84	0.1	0.9	16.4	24	51	1.8	89	1.23	1.24	66	0.013	0.37	0.10	348	416	111

HEREFORD FALL 18-MONTH-OLD BULLS

LOT 37 BULL

BH 503 OKIE 3038 9147G

44119103 – Calved: 10/20/19 – Tattoo: 9147

NJW 73S M326 TRUST 100W ET (SOD)(CHB)(DLF,HYF,REF,MSUDF,MDF) KCF BENNETT 3008 M326 (SOD)(DLF,HYF,REF,MDF)
 BH OKLA TRUSTWORTHY 503C ET (DLF,HYF,REF) NJW P606 72N DAYDREAM 73S (DLF,HYF,REF,MSUDF,MDF)
 43617548 UPS MISS SAGA 1174 ET (DLF,HYF,REF) SR SAGA 1137 (DLF,HYF,REF)
 NJW 47P 8D LARIAT 2S (DLF,REF)



BR JOE DOMINO 1014 ET (DLF,HYF,REF) CL 1 DOMINO 955W (SOD)(CHB)(DLF,HYF,REF)
 BOWLING JOE DOMINO 3038 (DLF,HYF,REF) BR GABRIELLE 5082 (DLF,HYF,REF)
 43455427 _D_R318 DOMINET 393 142Y L STAR DOMINO 212M R318
 LONK DOMINET 0393

BMIS
425
BIIS
503
CHBS
144

CE	BW	WW	YW	DMI	SC	SCF	MM	M&G
2.4	4.3	70	113	0.3	0.7	18.6	36	71
CEM	MCW	UDDR	TEAT	CW	FAT	REA	MARB	
2.3	129	1.40	1.30	89	-0.006	1.01	0.02	

- The top growth bull in the Hereford offering...his calves will mash the scales down.
- Top 2% for WW and REA; Top 3% for YW; Top 5% for MG; Top 10% for CW and FAT; Top 15% for SC and UDDR; Top 20% for MM and TEAT; Top 25% for CHB.
- WW ratio: 111



Lot 39 – Commercial Bull 946

LOT 38 BULL

BH 503 OKIE 4144 9151G

44119240 – Calved: 10/10/19 – Tattoo: 9151

NJW 73S M326 TRUST 100W ET (SOD)(CHB)(DLF,HYF,REF,MSUDF,MDF) KCF BENNETT 3008 M326 (SOD)(DLF,HYF,REF,MDF)
 BH OKLA TRUSTWORTHY 503C ET (DLF,HYF,REF) NJW P606 72N DAYDREAM 73S (DLF,HYF,REF,MSUDF,MDF)
 43617548 UPS MISS SAGA 1174 ET (DLF,HYF,REF) SR SAGA 1137 (DLF,HYF,REF)
 NJW 47P 8D LARIAT 2S (DLF,REF)

BR JOE DOMINO 1014 ET (DLF,HYF,REF) CL 1 DOMINO 955W (SOD)(CHB)(DLF,HYF,REF)
 BOWLING LADY JOSIE 1014 4144 (DLF,HYF,REF) BR GABRIELLE 5082 (DLF,HYF,REF)
 43535324 MCR J103 HELEN 956 CK MR ON TARGET J103 (DLF,HYF,REF)
 MCR MARK HELEN 761 (DLF,HYF,REF)

BMIS
377
BIIS
446
CHBS
119

CE	BW	WW	YW	DMI	SC	SCF	MM	M&G
-1.0	5.7	63	106	0.1	1.3	17.0	32	63
CEM	MCW	UDDR	TEAT	CW	FAT	REA	MARB	
1.5	123	1.30	1.20	75	-0.006	0.66	-0.04	

- Top 5% for REA; Top 10% for WW, YW and MG; Top 15% for SC, MM, UDDR and FAT; Top 20% for CW.



Lot 40 – Commercial Bull 948

HEREFORD COMMERCIAL BULLS

LOT 39 BULL

- Sired by SHF EARLY RISER 001A E309 ET
Born 3/4/19 BW 77#

LOT 41 BULL

- Born 2/11/19 BW 67#

LOT 43 BULL

- Sired by C BLACK HAWK DOWN ET
Born 9/7/19 BW 88#

LOT 40 BULL

- Sired by CJC KS 89T CHIVAS REGAL ET
Born 3/2/19 BW 71#

LOT 42 BULL

- Pedigree info updated sale day.

LOT 44 BULL

- Sired by SHF EARLY RISER 001A E309 ET
Born 10/20/19 BW 66#

LOT 45 BULL

- Sired by C 2052 5280 LAD 6110 ET
Born 10/20/19 BW 90#

RED ANGUS FALL 18-MONTH-OLD BULLS



Lot 47 – Bowl Geronimo 9916

LOT 47 BULL

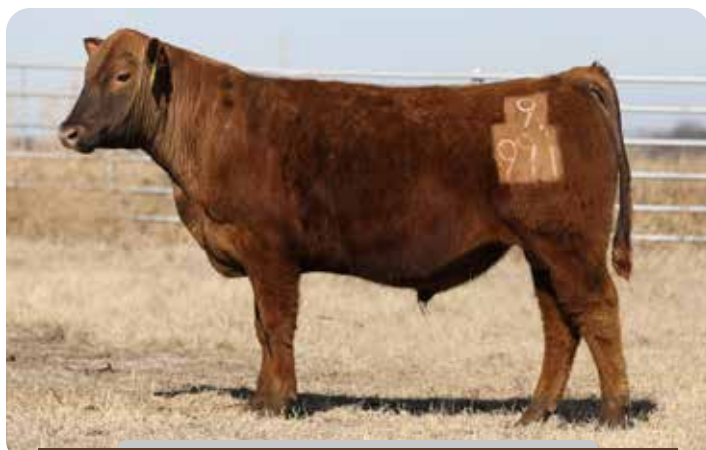
BOWL GERONIMO 9916

4278925 – Calved: 10/5/19 – Tattoo: 9916

BROWN JYJ REDEMPTION Y1334 (MAF,OSF,NHF,AMF,CAF)	BECKTON NEBULA P P707 (OSF)	HB
LSF BRA NO WORRIES 4657B (DDF,MAF,OSF,DMF,NHF,AMF,CAF)	JYJ MS JOLENE W16	59
1689588	LSF JBOB EXPECTATION 6034S (OSF,NHF,AMF)	86%
	LSF CRYSTAL LA394 R5154	GM
		43
HXC CONQUEST 4405P (MAF,OSF)	BECKTON JULIAN GG B571 (OSF)	40%
C-BAR ABIGRACE 264Z (MAF,OSF)	HXC ELLIE MAY MA638 (OSF)	Pro\$
1686468	C-BAR ABIGRACE W9100 (DDF,MAF,OSF,NHF)	116
	BECKTON HERITAGE N013 (MAF,OSF)	50%
	BROWN MS ABIGRACE P7905 (OSF)	

CED	BW	WW	YW	MILK	ME	HPG	CEM	STAY	MARB	YG	CW	REA	FAT
14	-4.0	64	104	32	3	9	7	13	0.57	0.03	18	0.12	0.01
Percentile Rank													
25%	13%	32%	31%	3%	64%	86%	38%	83%	16%	34%	56%	43%	36%

- An ET son of one of our top Red Angus donors, a Conquest x Abigrace female. He's a top calving ease bull in the Red Angus offering.
- Dam MPPA 109



Lot 48 – Bowl Guardian 9911

LOT 48 BULL

BOWL GUARDIAN 9911

4278915 – Calved: 8/16/19 – Tattoo: 9911

ANDRAS IN FOCUS B175	MYTTY IN FOCUS (DDF,OSF,NHF,AMF,CAF)	HB
ANDRAS FUSION R236 (MAF,OSF,NHF,AMF,CAF)	DI ESTONIA 316	47
1506931	ANDRASTHUNDER B105	56%
	ANDRAS BELLE B167	GM
		66
GILCHRIST POWERSTROKE Z206	MATTSON GRAYSTAR 5X	7%
BRA POWERSTROKE 439 (MAF,OSF)	WRIGHTS MYSTIC VISIONARY 148	Pro\$
1670835	D951 BOWL LUCY'S BIG SKY (OSF)	135
	FEDDES BIG SKY R9 (MAF,OSF)	20%
	LONK LUCY T736 (OSF)	

CED	BW	WW	YW	MILK	ME	HPG	CEM	STAY	MARB	YG	CW	REA	FAT
11	-1.1	60	105	28	0	7	7	11	0.45	0.06	34	0.16	0.00
Percentile Rank													
69%	63%	49%	28%	26%	46%	96%	42%	94%	37%	54%	9%	35%	20%

- Another ET son this time sired by Fusion. He's a half-brother to the Dayton bull we're partnered on with JCL.
- Dam MPPA 111

LOT 49 BULL

BOWL GAVEL 9567

4278911 – Calved: 10/17/19 – Tattoo: 9567

PIE ONE OF A KIND 352 (OSF)	BUF CRK THE RIGHT KIND U199 (OSF)	HB
BRA RANCHER KIND 352 633 (MAF,OSF)	PIE FAYETTE 1160 (OSF)	67
3558142	RED FINE LINE MULBERRY 26P (DDF,MAF,OSF,AMF)	73%
	RED BRYLOR BONITA 66K	GM
		24
BOWL 714 PONDEROSA 116	DJH PONDEROSA 714	81%
BRA RED LADY 116 483	BDEE GRAND LASS 7020 ET (OSF)	Pro\$
1741480	BROWN CH TURBO T2116 (OSF)	98
	TPW RED ARROW SIESTA U28	79%

CED	BW	WW	YW	MILK	ME	HPG	CEM	STAY	MARB	YG	CW	REA	FAT
12	0.0	75	114	25	6	12	8	12	0.30	0.03	26	0.20	0.01
Percentile Rank													
56%	82%	6%	14%	48%	87%	39%	21%	88%	74%	36%	25%	27%	36%

- WW ratio 109
- Dam MPPA 103

LOT 50 BULL

BOWL LASS 9546

4278879 – Calved: 9/15/19 – Tattoo: 9546

BROWN AA SENSATIONAL B5147 (MAF,OSF)	LSF TAKEOVER 9943W (DDF,MAF,OSF,NHF,AMF,CAF)	HB
BRA LADY SENSATIONAL 703 (MAF,OSF)	BROWN MS DESTINATION T7634 (OSF)	57
3716137	LSF SAGA 1040Y (OSF)	88%
	C-BROWN&KM ABIGRACE T715 (OSF)	GM
		43
LSF TBJ LONGEVITY 3436A (MAF,OSF)	BECKTON EPIC R397 K (OSF,NHF,AMF,CAF)	39%
BRA LASS LONGEVITY 7103	LSF CRYSTAL R5145 X0417 (OSF)	Pro\$
3841845	BAR D 834 GRAND LASS 015 (OSF)	80
	BDEE LANCER 834	95%
	BDEE GRAND LASS 7020 ET (OSF)	

CED	BW	WW	YW	MILK	ME	HPG	CEM	STAY	MARB	YG	CW	REA	FAT
13	-2.3	68	107	25	6	11	6	13	0.40	0.05	24	0.29	0.03
Percentile Rank													
38%	39%	20%	25%	51%	87%	45%	71%	82%	49%	48%	32%	14%	86%

- WW ratio 110
- Dam MPPA 104

Red Angus Breed Avg. EPDs

CED	BW	WW	YW	MILK	ME	HPG	CEM	STAY	MARB	YG	CW	REA	FAT	HB	GM
12	-1.7	61	97	25	0	11	7	15	0.41	0.06	21	0.11	0.02	77	39

RED ANGUS FALL 18-MONTH-OLD BULLS

LOT 51 BULL

BOWL GAINS 9540

4278871 – Calved: 10/15/19 – Tattoo: 9540

5L DEFENDER 560-30Z
5L DEFENDER 3450-1890D (MAF,OSF)
3617818 5L MARTHA 1467-3450

5L ADVOCATE 817-14W (DDF,OSF)
5L BLACK ADINA 525-560 (OSF)
5L NORSE DESIGN 673-5035 (MAF,OSF,AMF)
5L MARTHA 05-1467

HB
64
79%
GM
49
26%
Pro\$
122
40%

HXC CONQUEST 4405P (MAF,OSF)
BRA MISS CONQUEST 641
3901033 PELTON MISS REBA 6027Y (MAF,OSF)

BECKTON JULIAN GG B571 (OSF)
HXC ELLIE MAY MA638 (OSF)
BECKTON EPIC R397 K (OSF,NHF,AMF,CAF)
PELTON MISS JAYLA 0508S (OSF)

CED	BW	WW	YW	MILK	ME	HPG	CEM	STAY	MARB	YG	CW	REA	FAT
13	-1.9	66	111	28	-1	9	6	14	0.54	-0.02	13	0.09	-0.00
Percentile Rank													
47%	47%	24%	18%	26%	38%	86%	76%	72%	20%	13%	77%	52%	12%

• WW ratio 106

LOT 52 BULL

BOWL GRAVEL 9565

4278909 – Calved: 11/10/19 – Tattoo: 9565

5L DEFENDER 560-30Z
5L DEFENDER 3450-1890D (MAF,OSF)
3617818 5L MARTHA 1467-3450

5L ADVOCATE 817-14W (DDF,OSF)
5L BLACK ADINA 525-560 (OSF)
5L NORSE DESIGN 673-5035 (MAF,OSF,AMF)
5L MARTHA 05-1467

HB
66
75%
GM
46
34%
Pro\$
119
46%

FEDDES MONTANA X44 (MAF,OSF)
FEDDES LASS Y144-C71
3469599 FEDDES LASS Y144

BIEBER MAKE MIMI 7249 (MAF,OSF)
FEDDES BLOCKANA 8121 (OSF)
FEDDES GRAND CHER 7125 (MAF,OSF)
FEDDES LASS 450

CED	BW	WW	YW	MILK	ME	HPG	CEM	STAY	MARB	YG	CW	REA	FAT
13	-1.8	63	102	31	0	9	6	14	0.37	-0.08	24	0.30	-0.02
Percentile Rank													
41%	48%	35%	34%	8%	42%	88%	69%	65%	56%	5%	33%	13%	3%

• WW ratio 103

LOT 53 BULL

BOWL POWERSTROKE 9524

4278847 – Calved: 9/22/19 – Tattoo: 9524

PIE ONE OF A KIND 352 (OSF)
BRA RANCHER KIND 352 633 (MAF,OSF)
3558142 RED BRYLOR BONITA 20ST (OSF)

BUF CRK THE RIGHT KIND U199 (OSF)
PIE FAYETTE 1160 (OSF)
RED FINE LINE MULBERRY 26P (DDF,MAF,OSF,AMF)
RED BRYLOR BONITA 66K

HB
47
95%
GM
28
74%
Pro\$
94
83%

GILCHRIST POWERSTROKE Z206
BRA POWERSTROKE 439 (MAF,OSF)
1670835 D951 BOWL LUCY'S BIG SKY (OSF)

MATTSON GRAYSTAR SX
WRIGHTS MYSTIC VISIONARY 148
FEDDES BIG SKY R9 (MAF,OSF)
LONK LUCY T736 (OSF)

CED	BW	WW	YW	MILK	ME	HPG	CEM	STAY	MARB	YG	CW	REA	FAT
10	0.1	79	129	27	7	12	7	8	0.16	0.07	36	0.24	0.01
Percentile Rank													
78%	83%	2%	2%	35%	92%	26%	38%	99%	97%	58%	6%	21%	41%

• WW ratio 116
• Dam MPPA 111

LOT 54 BULL

BOWL GUS 9538

4278867 – Calved: 10/15/19 – Tattoo: 9538

PIE ONE OF A KIND 352 (OSF)
BRA RANCHER KIND 352 633 (MAF,OSF)
3558142 RED BRYLOR BONITA 20ST (OSF)

BUF CRK THE RIGHT KIND U199 (OSF)
PIE FAYETTE 1160 (OSF)
RED FINE LINE MULBERRY 26P (DDF,MAF,OSF,AMF)
RED BRYLOR BONITA 66K

HB
67
75%
GM
32
66%
Pro\$
81
94%

LSF TBJ LONGEVITY 3436A (MAF,OSF)
BRA 3436 RED LADY 574
3580997 3J MS ZIVA Z82

BECKTON EPIC R397 K (OSF,NHF,AMF,CAF)
LSF CRYSTAL RS145 X0417 (OSF)
HXC CONQUEST 4405P (MAF,OSF)
PFFR MS MESSINA 752

CED	BW	WW	YW	MILK	ME	HPG	CEM	STAY	MARB	YG	CW	REA	FAT
11	-0.1	81	131	23	6	12	7	12	0.27	0.07	29	0.23	0.02
Percentile Rank													
74%	81%	2%	2%	71%	88%	34%	43%	88%	82%	58%	17%	22%	68%

• The top weaning and yearling weight bull in the sale.
• WW ratio 114

LOT 55 BULL

BOWL GENTLE 9537

4278865 – Calved: 10/20/19 – Tattoo: 9537

PIE ONE OF A KIND 352 (OSF)
BRA RANCHER KIND 352 633 (MAF,OSF)
3558142 RED BRYLOR BONITA 20ST (OSF)

BUF CRK THE RIGHT KIND U199 (OSF)
PIE FAYETTE 1160 (OSF)
RED FINE LINE MULBERRY 26P (DDF,MAF,OSF,AMF)
RED BRYLOR BONITA 66K

HB
70
68%
GM
28
73%
Pro\$
94
84%

BUSTIN MULBERRY
BRA LADY 3022
1610209 BOWL 714 MS KITTYY 117 (OSF)

RED FINE LINE MULBERRY 26P (DDF,MAF,OSF,AMF)
KAS MISS MONU BUSTER (MAF,OSF)
DJH PONDEROSA 714
LONK KITTYY T751 (OSF)

CED	BW	WW	YW	MILK	ME	HPG	CEM	STAY	MARB	YG	CW	REA	FAT
10	-0.4	79	124	24	7	14	7	12	0.27	0.07	33	0.19	0.01
Percentile Rank													
78%	76%	3%	4%	61%	92%	13%	38%	88%	82%	62%	10%	29%	44%

• WW ratio 116
• Dam MPPA 104



Lot 55 – Bowl Gentle 9537

RED ANGUS FALL 18-MONTH-OLD BULLS



Lot 56 – Bowl Gateway 9534

LOT 56 BULL

BOWL GATEWAY 9534

4278861 – Calved: 10/11/19 – Tattoo: 9534

PIE ONE OF A KIND 352 (OSF)	BUF CRK THE RIGHT KIND U199 (OSF)	HB
BRA RANCHER KIND 352 633 (MAF, OSF)	PIE FAYETTE 1160 (OSF)	62
3558142	RED FINE LINE MULBERRY 26P (DDF, MAF, OSF, AMF)	82%
	RED BRYLOR BONITA 66K	GM
		19
		88%
BOWL 714 PONDEROSA 116	DJH PONDEROSA 714	Pro\$
BRA LADY 3023 (MAF, OSF)	BDEE GRAND LASS 7020 ET (OSF)	81
1610202	D951 BOWL LUCY'S BIG SKY (OSF)	94%
	FEDDES BIG SKY R9 (OSF)	
	LONK LUCY T736 (OSF)	

CED	BW	WW	YW	MILK	ME	HPG	CEM	STAY	MARB	YG	CW	REA	FAT
11	-1.0	77	122	25	7	13	8	10	0.18	0.07	28	0.16	0.02
Percentile Rank													
68%	65%	4%	6%	54%	93%	15%	28%	95%	95%	58%	21%	35%	51%

- WW ratio 113
- Dam MPPA 106



Lot 58 – Bowl Powerstroke 9506

LOT 57 BULL

BOWL PRITCHARD 9518

4278841 – Calved: 9/19/19 – 9518

LEACHMAN PLEDGE A282Z	LSF NEXTPECTION 0083X (MAF, OSF)	HB
HXC ALLEGIANCE 5502C (DDF, MAF, OSF, NHF, AMF, CAF)	LCOC ZARA TG004	85
3494126	BECKTON NEBULA P P707 (OSF)	34%
	HXC ZIMA 338N	GM
		70
		5%
3J ABEL U135	RED FINE LINE MULBERRY 26P (DDF, MAF, OSF, AMF)	Pro\$
PRITCHARD LADY	2022 JAN MILLER CHIEF	157
1564129	JDW MAXIE 67U	4%
	JDW GRAND LASS 40L	

CED	BW	WW	YW	MILK	ME	HPG	CEM	STAY	MARB	YG	CW	REA	FAT
11	-0.7	71	118	28	2	12	6	16	0.61	0.13	37	0.09	0.02
Percentile Rank													
70%	71%	13%	8%	23%	58%	36%	71%	40%	11%	87%	6%	52%	52%

- WW ratio 106

LOT 58 BULL

BOWL POWERSTROKE 9506

4278825 – Calved: 9/9/19 – Tattoo: 9506

PIE ONE OF A KIND 352 (OSF)	BUF CRK THE RIGHT KIND U199 (OSF)	HB
BRA RANCHER KIND 352 633 (MAF, OSF)	PIE FAYETTE 1160 (OSF)	63
3558142	RED FINE LINE MULBERRY 26P (DDF, MAF, OSF, AMF)	81%
	RED BRYLOR BONITA 66K	GM
		27
		75%
GILCHRIST POWERSTROKE Z206	MATTSON GRAYSTAR 5X	Pro\$
BRA LADY POWERSTROKE 424	WRIGHTS MYSTIC VISIONARY 148	71
1670836	BDEE LANCER 834	98%
	BDEE MISS DELLA 8012	

CED	BW	WW	YW	MILK	ME	HPG	CEM	STAY	MARB	YG	CW	REA	FAT
10	0.1	74	117	24	8	11	7	13	0.26	0.05	28	0.15	0.01
Percentile Rank													
78%	83%	7%	10%	58%	94%	50%	49%	83%	84%	48%	20%	38%	31%

- WW ratio 102
- Dam MPPA 103

LOT 59 BULL

BOWL GRANDEUR 9510

4278831 – Calved: 9/11/19 – Tattoo: 9510

LEACHMAN PLEDGE A282Z	LSF NEXTPECTION 0083X (MAF, OSF)	HB
HXC ALLEGIANCE 5502C (DDF, MAF, OSF, NHF, AMF, CAF)	LCOC ZARA TG004	88
3494126	BECKTON NEBULA P P707 (OSF)	26%
	HXC ZIMA 338N	GM
		73
		3%
LSF JBOB EXPECTATION 6034S (OSF, NHF, AMF)	LCHMN ENTERPRISE 1370H (OSF)	Pro\$
RHODES SWEETNESS 2725	LSF SWEETNESS J1358 P4085 (MAF, OSF, NHF)	157
1566475	BUF CRK CARRIE W069 (MAF, OSF, NHF)	4%
	BUF CRK CARRIE T285 (OSF)	

CED	BW	WW	YW	MILK	ME	HPG	CEM	STAY	MARB	YG	CW	REA	FAT
11	-2.2	61	101	31	3	14	6	17	0.88	0.12	24	0.09	0.03
Percentile Rank													
74%	41%	42%	36%	5%	71%	11%	67%	31%	1%	85%	33%	52%	87%

Red Angus Breed Avg. EPDs

CED	BW	WW	YW	MILK	ME	HPG	CEM	STAY	MARB	YG	CW	REA	FAT	HB	GM
12	-1.7	61	97	25	0	11	7	15	0.41	0.06	21	0.11	0.02	77	39

RED ANGUS FALL 18-MONTH-OLD BULLS



BOWL XTREME 9552

4278889 – Calved: 10/22/19 – Tattoo: 9552

5L DEFENDER 560-30Z
5L DEFENDER 3450-1890D (MAF,OSF)
3617818 5L MARTHA 1467-3450

LSF TBJ LONGEVITY 3436A (MAF,OSF)
BRA XTREME LONGEVITY 6117
3718857 RHODES SWEETNESS 2725

5L ADVOCATE 817-14W (DDF,OSF)
5L BLACK ADINA 525-560 (OSF)
5L NORSE DESIGN 673-5035 (MAF,OSF,AMF)
5L MARTHA 05-1467

HB
71
66%
GM
54
19%
Pro\$
110
61%

CED	BW	WW	YW	MILK	ME	HPG	CEM	STAY	MARB	YG	CW	REA	FAT
12	-1.1	63	105	24	-1	12	5	14	0.51	-0.04	15	0.18	-0.00
Percentile Rank													
64%	63%	37%	29%	59%	34%	39%	85%	63%	25%	10%	67%	31%	12%



BOWL GLORY 9507

4278827 – Calved: 9/10/19 – Tattoo: 9507

LEACHMAN PLEDGE A282Z
HXC ALLEGIANCE 5502C (DDF,MAF,OSF,NHF,AMF,CAF)
3494126 HSC 100Y

BFCCK CHEROKEE CNYN 4912 (MAF,OSF)
BDEE TINA 781 (OSF)
1192554 BIEBER TINA 9144

LSF NEXTPECTATION 0083X (MAF,OSF)
LCOC ZARA TG004
BECKTON NEBULA P P707 (OSF)
HXC ZIMA 338N

HB
52
92%
GM
59
12%
Pro\$
104
71%

CED	BW	WW	YW	MILK	ME	HPG	CEM	STAY	MARB	YG	CW	REA	FAT
12	-2.7	58	93	31	5	12	5	13	0.71	0.12	22	0.09	0.04
Percentile Rank													
50%	32%	57%	56%	8%	81%	41%	82%	82%	4%	85%	41%	52%	90%



BOWL DESTINY 9545

4278877 – Calved: 10/18/19 – Tattoo: 9545

5L DEFENDER 560-30Z
5L DEFENDER 3450-1890D (MAF,OSF)
3617818 5L MARTHA 1467-3450

LSF TBJ LONGEVITY 3436A (MAF,OSF)
BRA DESTINY LONGEVITY 6109
3718841 RHODES DESTINY 2767

5L ADVOCATE 817-14W (DDF,OSF)
5L BLACK ADINA 525-560 (OSF)
5L NORSE DESIGN 673-5035 (MAF,OSF,AMF)
5L MARTHA 05-1467

HB
68
73%
GM
51
24%
Pro\$
133
23%

CED	BW	WW	YW	MILK	ME	HPG	CEM	STAY	MARB	YG	CW	REA	FAT
13	-1.0	61	101	23	-1	10	6	14	0.46	-0.03	17	0.15	-0.01
Percentile Rank													
49%	65%	46%	37%	73%	37%	68%	75%	65%	35%	11%	60%	38%	9%



BOWL GENERATE 9548

4278881 – Calved: 11/1/19 – Tattoo: 9548

5L DEFENDER 560-30Z
5L DEFENDER 3450-1890D (MAF,OSF)
3617818 5L MARTHA 1467-3450

LSF TBJ LONGEVITY 3436A (MAF,OSF)
BRA MARCIE LONGEVITY 6106
3718837 JKC MARCIE 213Z

5L ADVOCATE 817-14W (DDF,OSF)
5L BLACK ADINA 525-560 (OSF)
5L NORSE DESIGN 673-5035 (MAF,OSF,AMF)
5L MARTHA 05-1467

HB
72
64%
GM
52
23%
Pro\$
103
73%

CED	BW	WW	YW	MILK	ME	HPG	CEM	STAY	MARB	YG	CW	REA	FAT
13	-1.2	60	101	22	-1	12	6	15	0.39	-0.04	18	0.16	-0.01
Percentile Rank													
47%	61%	50%	37%	78%	34%	38%	78%	59%	51%	10%	56%	35%	7%

RED ANGUS COMMERCIAL BULLS



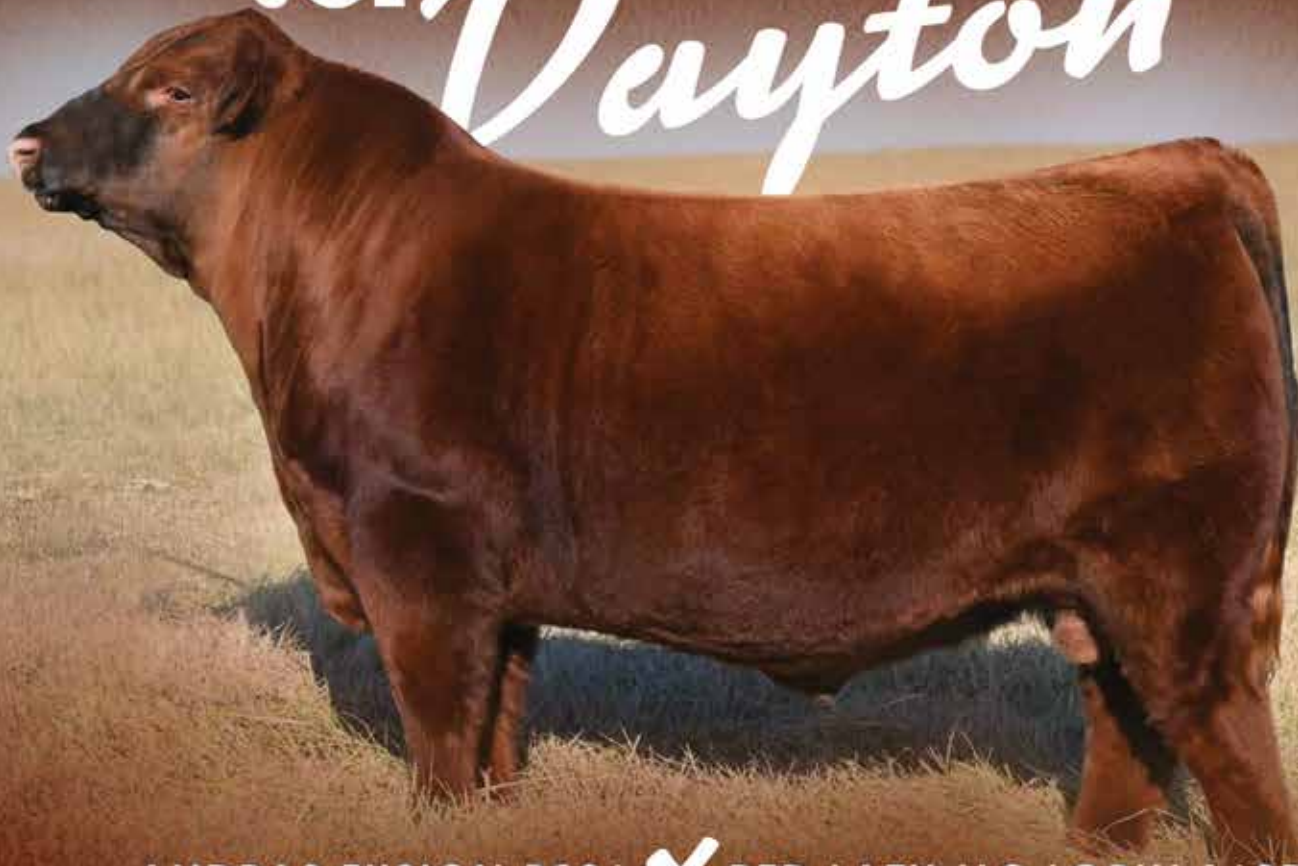
• Commercial Bull 9156



• Commercial Bull 9140

JCL Dayton

#4231006



ANDRAS FUSION R236 X RED LAZY MC LORIN 168D

ProS	HB	GM	CED	BW	WW	YW	ADG	DMI	MILK	ME	HPG	CEM	STAY	Marb	YG	CW	REA	FAT
154	104	50	13	-0.5	55	93	0.24	1.45	25	-9	7	8	20	0.46	0.06	21	0.04	0.01
5%	5%	26%	41%	73%	68%	56%	40%	54%	48%	6%	97%	26%	5%	35%	50%	44%	63%	26%

With his Herdbuilder and ProS indices in the top 5% of the breed, Dayton is a super sound, good footed bull with the pastern flex and movement to make the type that can work in all parts of the country. He is a frame 5.9, and out of a young 5 year old dam that has already produced some of the top replacement females in our herd.

He was a division champion bull at both the 2020 American Royal and the 2021 Cattleman's Congress.

A limited number of semen packages are available for 2021. \$1000 for 10 units of unsexed or \$1250 for 10 units of mixed (5 sexed female and 5 unsexed), and \$1500 for 10 units of sexed female semen.



Maternal half sister by PZC TMAS Firestorm 1800 ET



Maternal half sister by KJHT Power Take Off



Maternal half sister by Silveras Mission Nexus 1378

OWNERS



Tim (580) 362-5026
Nancy (405) 742-4553
tbstidham@yahoo.com



RED ANGUS INC.
Jimmy & Regina Linthicum
Text only: (918) 533-0445
Cheryl Linthicum (830) 431-1859
Drew Wright - Herdsman
jcl@ruralinet.net



B 6077

#P44167450

GETTYSBURG

9239 ET

SIRE:

C DOUBLE YOUR MILES 6077 ET

DAM:

C 812U MISS MILES 4196 ET

Gettysburg has been a standout here at the ranch since birth. He was selected as the Polled Reserve Champion Senior Bull Calf at the 2021 Cattlemen's Congress and the interest we received on him has been huge. His near flawless phenotype combined with some of the top proven cow families in his pedigree and a well-balanced set of EPDs makes this young Double Your Miles son a difference maker.



C 812U Miss Miles 4196 ET
Dam of Gettysburg



It is hard to have a better maternal pedigree than Gettysburg. By combining 88X, Miles McKee and the great 9126J cow, he is destined to sire some outstanding daughters. His Miles McKee dam posted a 115 ratio for REA and has a beautiful udder.

Top 2% for CW and BMIS; Top 3% for BII\$; Top 4% for SCF; Top 5% for REA; Top 10% for M&G and CHB\$; Top 15% for MM and UDDR; Top 20% for WW, MCW and TEAT.



Nancy Bowling (580) 362-5026

Tim Stidham

Ranch Manager (405) 742-4553
BowlingBarDRanch@gmail.com

SEMEN: 10 Straws - Unsexed
\$1000 - Non-Certificate

BOWLING RANCH
2211 South 29th
Blackwell, OK 74631-6841

HEREFORD

—D BOWLING RANCH —D

RED ANGUS

Spring INAUGURAL
BULL SALE

THURSDAY - APRIL 8, 2021 | NOON
AT THE RANCH NEAR NEWKIRK, OK
