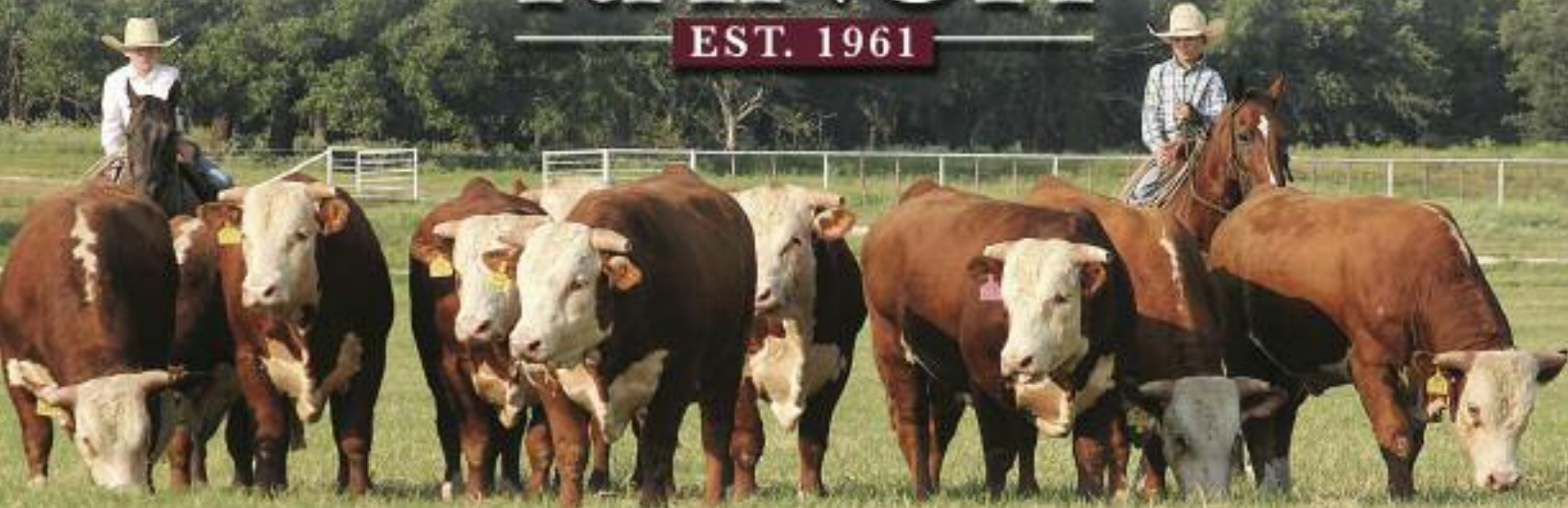




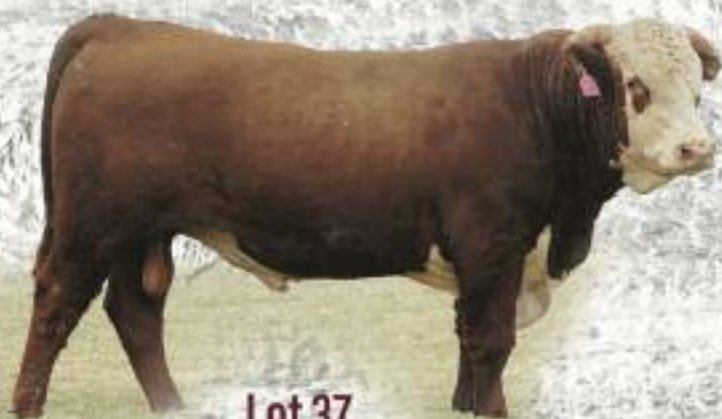
RANCH

EST. 1961



FALL PRODUCTION SALE

Friday, October 15, 2021 • 12:30 p.m.



Lot 37



Lot 4

At the **RANCH**
Morgan, Texas



Jeff Chaffin, Ranch Manager
Joe Walker & Joey Walker, Owners
Ranch Office: (254) 635-4444
Ranch Fax: (254) 635-7201
P. O. Box 9
Morgan, Texas 76671
www.w4ranch.com



Joe Walker



Joey and Kim Walker with
Sydney and Tripp



Jeff Chaffin Family



W4 Ranch Staff (l to r) Kash Hines,
Matt Jones and Jeff Chaffin

WELCOME

*to our annual
W4 Fall Production Sale!*

We want to welcome you to our annual fall sale on Friday, October 15th at the ranch.

The genetics represent our commitment to the Hereford breed and the beef industry. We produce these bulls and develop them with you, our customers in mind. We are excited about the bulls we have to offer and you'll find the offering is predominantly two-year-olds, and some yearlings, also. There are bulls sired by our proven herd sires and bulls that are ready to go to work in your pastures. These bulls offer high EPDs in weaning and yearling weights, have carcass quality and have been developed to be range tough, plus all bulls have passed a breeding soundness examination. These bulls are not overdone and are raised for the long haul. This offering will honor our commitment to our commercial cow/calf customers as they will add value to their calf crops. We strive for balance in all that we do and that includes how we select, mate and raise our cattle.

We are selling 76 two-year-old bulls and 25 yearling bulls. This year's female offering will include 30 registered Hereford open heifers; 35 registered Hereford heifers fall bred to Hereford/Angus bulls, 45 registered Hereford heifers spring bred to Hereford bulls.

Customer service and complete satisfaction are very important to us, so if we can answer any questions or help you find the right bull and/or female, please contact us.

We will be broadcasting on Superior Livestock if you can't join us, but we look forward to seeing you at our fall sale.

Best Regards,
Joe and Joey Walker
(817) 595-1121

Jeff Chaffin
(254) 396-2785

"We invite you to view our 2021 fall production sale..."

Schedule of Events

FRIDAY, OCTOBER 15, 2021

8:00 a.m. – Coffee, donuts and viewing of cattle

11:00 a.m. – Lunch served

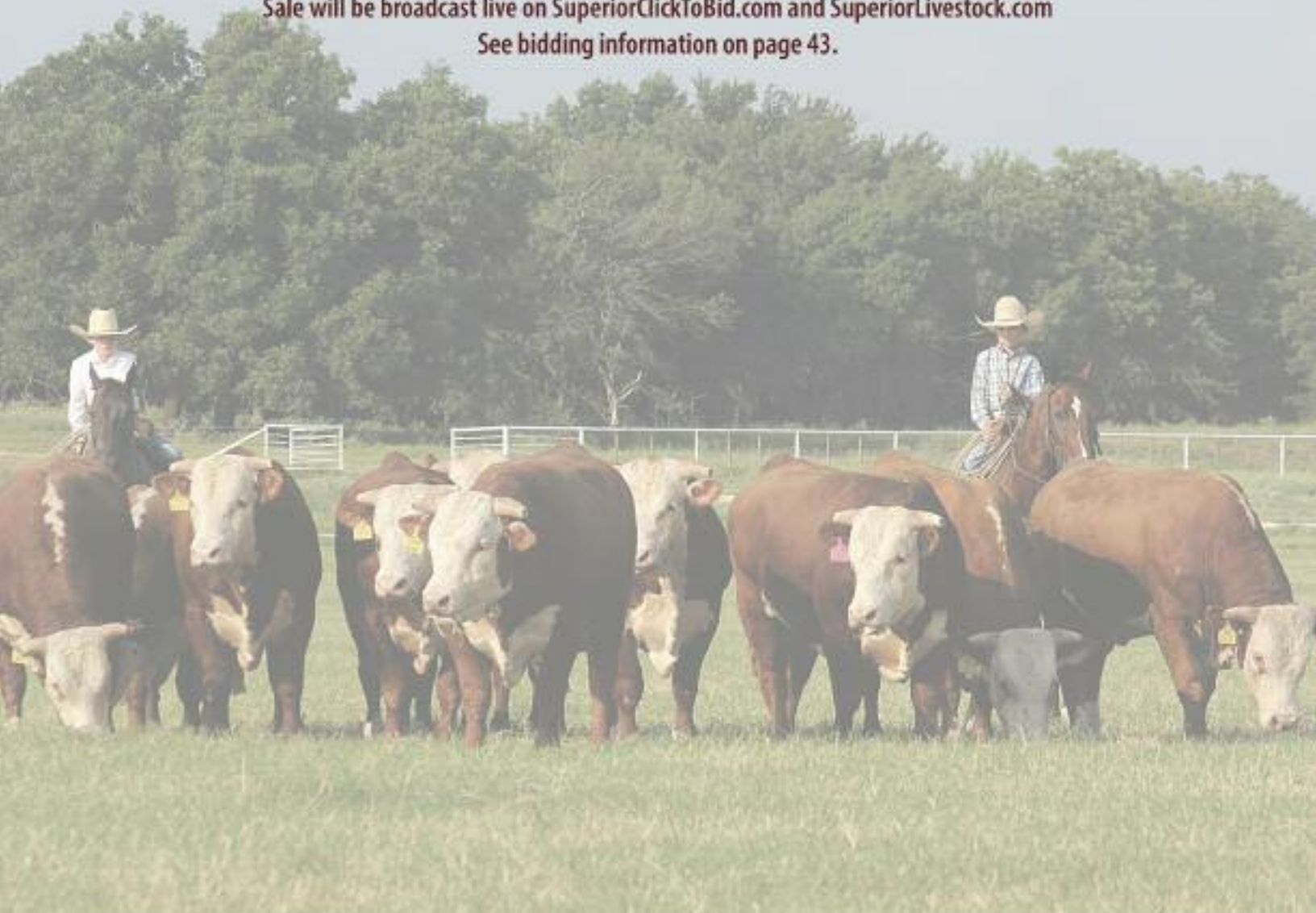
12:30 p.m. – Fall Production Sale

Selling

- 76 – Two-Year-Old Bulls
- 25 – Yearling Bulls
- 35 – Registered Hereford Heifers Fall Bred To Low Birth Weight Hereford or Angus Bulls
- 45 – Registered Hereford Heifers Spring Bred To Low Birth Weight Hereford Bulls
- 30 – Registered Open Hereford Heifers

Sale will be broadcast live on SuperiorClickToBid.com and SuperiorLivestock.com

See bidding information on page 43.



Fall Production Sale

FRIDAY, OCTOBER 15, 2021

12:30 p.m. CST – At the ranch, Morgan, Texas

Sale Location

W4 Ranch-Steele Creek Headquarters, located on FM 927 between Lakeside Village and Morgan in Bosque County, Texas or 4 miles east of Morgan from Hwy. 174.

Accommodations

Hillsboro, Texas, 29 miles from the ranch

Sale Headquarters: Ramada Inn
(254) 582-3493 or (877) 200-3392

Other lodging at

Comfort Inn, (254) 582-3338

Holiday Inn Express, (254) 582-0220

Also in Clifton, 20 miles from ranch

Best Western, (254) 675-8999

Air Travel

Dallas/Fort Worth Airport is serviced by most major airlines and is 90 miles from ranch. Waco Airport is located just 40 minutes from ranch. We have a private FAA approved airstrip located on the ranch that can accommodate most all private planes. W4 Ranch airstrip's new location identifier for the landing facility is 84TE.

A 75' wide x 4,500' long asphalt runway.

Call (254) 635-4444 for shuttle to sale barn.

Sale Day Phone

(254) 635-4444 – Phone bids welcomed

Sale Manager

JOHNSON
CATTLE MARKETING

Tom Johnson

440 FM 246 • Wortham, Texas 76693

(903) 599-2403 or

(817) 291-5121

Absentee Inquiries/Bids Contact

Tom Johnson, cell(817) 291-5121

Jeff Chaffin(254) 396-2785

Joe Walker(817) 965-4560 or office (817) 595-1121

Joey Walker(817) 395-2228

Jack Chastain(817) 831-3161

Bidding/Buying Online

Sale will be broadcast live on SuperiorClickToBid.com and SuperiorLivestock.com

Call 817/422-2117 to register.

See page 40 for details on viewing/bidding/buying on Superior.

Auctioneer

Col. Doak Lambert

Sale Staff

Hereford World Colton Pratz

Texas Hereford Jack Chastain

Weekly Livestock Reporter Ralph Means

Special Assignment James Grant and Clint Minchew

Terms of Sale

Terms of sale are CASH, to be paid in full at the conclusion of the sale. We will be glad to consider special terms if arrangements are made prior to the sale date. Contact Tom Johnson.

Sale Conditions

Each animal will be sold to the highest bidder with the auctioneer settling any disputes as to bids. Each animal will become the property of the buyer as soon as sold.

Guarantee

All cattle are guaranteed to be breeders; all females having been examined safe in calf will be considered as proven breeders. Any bull subsequently found to be a non-breeder may be returned in good condition and with our permission within six months of the sale date. We reserve the right to try any reported non-breeder for six months and if we cannot confirm the animal as a breeder will refund the purchase price.

Herd Health

Individual health certificates for interstate shipment will be furnished on all sale cattle. All test-age cattle will have been tested negative for Brucellosis. All the cattle have been vaccinated for 7-Way Blackleg, Lepto and wormed. Mark Jackson, DVM serves as our herd veterinarian.

EPDs

EPDs in this catalog were obtained on September 14, 2021.

Note

All persons attending the sale do so at their own risk. W4 Ranch nor any person connected with the sale assumes liability, legal or otherwise, for any accidents which may occur.



Stand out with Proven Genetics

THE HEREFORD ADVANTAGE PROGRAM

Increase added market power and brand recognition with feeder cattle sired by a Hereford bull battery ranking in the top 50% for CHB\$ index.



PROGRAM BENEFITS:

- ✓ EPD ranking summary
- ✓ Added market exposure
- ✓ Genetic improvement tool
- ✓ Access to AHA resources
- ✓ Get started at HerefordFeederCattle.com

“The Hereford Advantage program helps us to focus on providing the best quality genetics that we can possibly provide to our customers - the cattle feeder. We try to select bulls who will sire calves that will excel in the feed yard.”

-NANCY BOWLING

BOWLING RANCH, NEWKIRK, OKLA.



Certified Hereford Beef Index(CHB\$) is a terminal sire index that is built on a production system where Hereford bulls are used on Angus-based cows with a focus on feedlot performance and end-product merit. To qualify for the Hereford Advantage program, cattle must be sired by registered Hereford bulls with transferred ownership, and the Hereford bull battery must have a CHB\$ value ranking in the top 50%.



RANCH
EST. 1961

Jeff Chaffin, Ranch Manager
Joe Walker & Joey Walker, Owners
Ranch Office: (254) 635-4444
Ranch Fax: (254) 635-7201
P. O. Box 9
Morgan, Texas 76671
www.w4ranch.com



The Hill



The Feedlot

*"Our bulls
will work
anywhere and
gain as they
are working..."*

The W4 Ranch Bull Development Center

"Our bulls can work anywhere..."

Our Bull Development Center is 100 acres that is divided into five paddocks with a 200 feet tall rock hill in the center.

After preconditioning, these bulls are divided by age groups and walked to the paddocks.

On one side of the hill is their water and on the opposite side, their feed source.

The distance is a half mile each way and requires climbing the rock hill. This procedure strengthens hocks and feet as well as builds muscle.

Bulls raised in this environment will work anywhere and gain as they are working.

- ✓ Bulls weaned, vaccinated and wormed at 205 days.
- ✓ Bulls conditioned on starter ration for 21 days and then transitioned to a high roughage ration for the remainder of the feed period.
- ✓ Bulls raised on high roughage ration.
- ✓ Bulls weaning and yearling weights are adjusted.



Performance & Carcass • EPD Information

Calving Ease – Direct (CE)

CE EPD is based on calving ease scores and birth weights and is measured on a percentage. CE EPD indicates the influence of the sire on calving ease in females calving at 2 years of age. For example, if sire A has a CE EPD of 6 and sire B has a CE EPD of -2, then you would expect on average if comparably mated, sire A's calves would be born with an 8% more likely chance of being unassisted when compared to sire B's calves.

Birth Weight (BW)

BW EPD is an indicator trait for calving ease and is measured in pounds. For example, if sire A has a BW EPD of 3.6 and sire B has a BW EPD of 0.6, then you would expect on average if comparably mated, sire A's calves would come 3 lb. heavier at birth when compared to sire B's calves. Larger BW EPDs usually, but not always, indicate more calving difficulty. The figure in parentheses found after each EPD is an accuracy value or reliability of the EPD.

Weaning Weight (WW)

WW EPD is an estimate of pre-weaning growth that is measured in pounds. For example, if sire A has a WW EPD of 60 and sire B has a WW EPD of 40, then you would expect on average if comparably mated, sire A's calves would weigh 20 lb. heavier at weaning when compared to sire B's calves.

Yearling Weight (YW)

YW EPD is an estimate of post-weaning growth that is measured in pounds. For example, if sire A has a YW EPD of 100 and sire B has a YW EPD of 70, then you would expect on average if comparably mated, sire A's calves would weigh 30 lb. heavier at a year of age when compared to sire B's calves.

Scrotal Circumference (SC)

Measured in centimeters and adjusted to 365 days of age, SC EPD is the best estimate of fertility. It is related to the bull's own semen quantity and quality, and is also associated with age at puberty of sons and daughters. Larger SC EPDs suggest younger age at puberty. Yearling sons of a sire with a .7 SC EPD should have yearling scrotal circumference measurements that average 0.7 centimeters (cm) larger than progeny by a bull with an EPD of 0.0 cm. In the Hereford genetic analysis, a multiple-trait model was used for scrotal circumference. Weaning weight was used as a predictor variable to increase the prediction accuracy of SC EPDs. Therefore, an animal with a weaning weight EPD should also have a SC EPD.

Maternal Milk (MM)

The milking ability of a sire's daughters is expressed in pounds of calf weaned. It predicts the difference in average weaning weights of sires' daughters' progeny due to milking ability. Daughters of the sire with a +14 MM EPD should produce progeny with 205-day weights averaging 24 lb. more (as a result of greater milk production) than daughters of a bull with a MM EPD of -10 lb. (14 minus -10.0 = 24 lb.). This difference in weaning weight is due to total milk production during the entire lactation.

Teat Size (TEAT)

Scores range from 9 (very small) to 1 (very large, balloon shaped) and are subjective assessments of the teat length and circumference. Oversized teats are difficult for newborn calves to nurse, and the calf may not receive adequate colostrum. This could lead to a higher incidence of scours or decreased immunity levels in the newborn calf.

TEAT EPDs are reported on the scoring scale. Differences in sire EPDs predict the difference expected in the sires' daughters' udder characteristics when managed in the same environment. For example, if sire A has a teat size EPD of 0.4, and sire B has a teat size EPD of -0.1, the difference in the values is 0.5, or one-half of a score. If daughters of sires A and B are raised and managed in the same environment, you would expect half a score smaller teat size in daughters of sire A, compared to sire B.

Ribeye Area (REA)

REA EPDs reflect differences in an adjusted 365-day ribeye area measurement based on carcass measurements of harvested cattle. Sires with relatively higher REA EPDs are expected to produce better-muscled and higher percentage yielding slaughter progeny than will sires with lower REA EPDs. Ultrasound measurements are also incorporated into this trait and have been shown to be highly correlated with the performance of slaughter progeny. All data is expressed on a carcass scale.

Marbling (MARB)

MARB EPDs reflect differences in an adjusted 365-day marbling score [intramuscular fat, (IMF)] based on carcass measurements of harvested cattle. Breeding cattle with higher MARB EPDs should produce slaughter progeny with a higher degree of IMF and therefore higher quality grades. Ultrasound measurements are also incorporated into this trait and have been shown to be highly correlated with the performance of slaughter progeny. All data is expressed on a carcass scale.

Baldy Maternal Index (BMIS)

The Baldy Maternal Index is a maternally focused index that is based on a production system that uses Hereford x Angus cross cows. Progeny of these cows are directed towards Certified Hereford Beef. This index has significant weight on Sustained Cow Fertility, which predicts fertility and longevity of females. There is a slightly positive weight on Weaning Weight, Mature Cow Weight and Milk which accounts for enough growth but ensures females do not increase inputs. There is some negative emphasis on Dry Matter Intake, but a positive weighting on Carcass Weight which is anticipated to provide profitability from finishing of non-replacement females and castrated males. Marbling and Rib-eye Area are also positively weighted to keep the harvested progeny successful for CHB. This index is geared to identify Hereford bulls that will be profitable when used in a rotational cross with mature commercial Angus cows.

Brahman Influence Index (BIIS)

The Brahman Influence Index is a maternally focused index that is based on a production system that uses Brahman x Hereford cross cows. Progeny of these cows are directed towards a commodity beef market since Certified Hereford Beef does not accept Brahman influenced cattle. This index has significant weight on Sustained Cow Fertility, which predicts fertility and longevity of females. There is a slightly positive weight on Weaning Weight, Mature Cow Weight and Milk which accounts for enough growth but ensures females do not increase inputs. There is some negative emphasis on Dry Matter Intake, but a positive weighting on Carcass Weight which is anticipated to provide profitability in finishing non-replacement females and castrated males. Marbling and Rib-eye Area are also positively weighted to keep harvested progeny successful for a variety of commodity based programs. This index targets producers that use Hereford bulls on Brahman influenced cows.

Certified Hereford Beef Index (CHBS)

The Certified Hereford Beef Index is a terminal sire index that is built on a production system where Hereford bulls are mated to mature commercial Angus cows where all progeny will be targeted for Certified Hereford Beef after the finishing phase. This index has significant weight on Carcass Weight and Marbling to ensure profit on the rail. As well there is a positive weighting for Average Daily Gain along with a negative weighting on Dry Matter Intake to ensure efficient pounds of growth in the finishing phase. In addition, there is a positive weighting for Rib-eye Area and a negative weighting for Back Fat to maintain desirable Yield Grades. This is the only index that has no emphasis on fertility. Remember that no replacement heifers are being retained.

	CE	BW	WW	YW	SC	MM	TEAT	REA	MARB	BMI	BII	CHB
Upper 1%	16.0	-4.2	77	124	2.0	43	1.7	0.94	0.58	529	619	173
5%	11.7	-0.8	69	112	1.7	37	1.5	0.75	0.38	472	558	151
10%	9.5	0.2	66	107	1.5	35	1.4	0.66	0.3	442	526	141
30%	5.4	1.8	59	95	1.2	29	1.3	0.49	0.17	384	459	122
50%	2.5	2.9	54	87	1.0	25	1.2	0.38	0.09	347	415	111

REF BAR-S-SOF MR 88X 310

DOB:01/07/13 Bull 43396221 Tattoo:310

SHF RIB EYE M326 R117 {SOD,DLF,HYF,IEF}
NJW 98S R117 RIBEYE 88X ET {SOD,DLF,HYF,IEF,MSUDF,MDF}
43094146 NJW 9126J DEW DOMINO 98S {DOD,DLF,HYF,IEF}

UPS KOOTENAY 3228 1ET
BHF MISS KOOTER 602 {DLF,HYF,IEF}
42698415 BHF 746G DOMINETTE 316

BW	WW	YW	Milk	M&G	YSC	REA	MARB	CHB
3.0	52	78	35	61	0.4	0.56	0.22	134

310 is sired by the 88X bull, who is siring some of the most sought-after cattle in the industry today. He was added to our herd bull lineup for his structural correctness and powerful makeup. His sons and daughters will benefit from his EPD profile. He is truly a "spread" bull from BW to YW with added milk and carcass traits.

REF W4 592 DOMINO 102Y ET

DOB:01/01/11 Bull 43212083 Tattoo:102Y

MH DAKOTA 0230 {SOD,DLF,HYF,IEF}
CHURCHILL RANCHER 592R {SOD,DLF,IEF}
42580855 CHURCHILL LADY 202 {DLF,HYF,IEF}

BR DM KEY DOMINO 0174 {DLF,IEF}
BR 74 ALAINNA 3113
42453687 BR DOMINETTE 0013

BW	WW	YW	Milk	M&G	YSC	REA	MARB	CHB
5.5	59	93	23	52	0.5	0.24	0.18	109

This Churchill Rancher sired bull has made quite an impact on our herd. 102Y is a heavily muscled, long sided bull that will add performance and length to his calves. Numerous top selling bulls in past sales were sired by 102Y.

REF CL 1 DOMINO 338A

DOB:01/09/13 Bull 43379685 Tattoo:338A

CL 1 DOMINO 929W {DLF,HYF,IEF}
CL 1 DOMINO 105Y {SOD,DLF,HYF,IEF}
43189434 CL 1 DOMINETTE 9140W 1ET {DOD,DLF,HYF,IEF}

CL 1 DOMINO 862U {CHB,DLF,IEF}
CL 1 DOMINETTE 1146Y {DLF,HYF,IEF}
43189521 CL 1 DOMINETTE 617S {DLF,HYF,IEF}

BW	WW	YW	Milk	M&G	YSC	REA	MARB	CHB
3.0	51	77	47	72	1.5	0.56	-0.03	114

338A is a calving ease bull bred in the Cooper Herd in Montana. He is a well-balanced bull with some muscle and shape. Balanced EPDs and strong Ribeye and CHB numbers.

REF DB 5216 DOM 0387

DOB:10/01/10 Bull 43146486 Tattoo:0387

UPS DOMINO 3027 {SOD,DLF,HYF,IEF,MSUDF,MDF}
UPS DOMINO 5216 {SOD,DLF,IEF}
42644307 UPS MISS MOM 2756 {DOD}

CHURCHILL DOMINO 313
DB MISS DOM 6005
42752001 DB MISS HORIZON 7223

BW	WW	YW	Milk	M&G	YSC	REA	MARB	CHB
3.7	55	96	33	60	1.6	0.40	0.07	99

0387 was purchased from Dudley Brothers in the Fall of 2012 because of the genetics on his sire's side. He has been a wise choice. He has been equally good breeding heifers, as well as cows and with his balanced EPDs his progeny are excelling.

REF DH DOMINO 392A

DOB:12/08/13 Bull 43459361 Tattoo:392A

CL 1 DOMINO 860U {SOD,DLF,HYF,IEF}
CL 1 DOMINO 0141 1ET {SOD,CHB,DLF,HYF,IEF}
43082416 CL 1 DOMINETTE 475P {DLF,HYF,IEF}

DH ADVANCE 736 {DLF,HYF,IEF}
DH MISS ADVANCE 9156 {DLF,HYF,IEF,MSUDF}
43068442 DH DOMINETTE 7157

BW	WW	YW	Milk	M&G	YSC	REA	MARB	CHB
2.5	69	119	37	71	1.1	0.61	-0.07	105

392A was purchased as the high selling bull at Deber's in Alabama. This bull is exceeding our high expectations and the results are evident in his first calf crop. Lots of performance and look in this L1 bull.



REF C BAILEES MILES 4312 ET

DOB: 03/18/14 Bull 43487323 Tattoo: 4312

NJW 98S R117 RIBEYE 88X ET {SOD,DLF,HYF,IEF,MSUDF,MDF}
C MILES MCKEE 2103 ET {DLF,HYF,IEF,MSUDF,MDF}
 43270668 C NOTICE ME ET {DLF,HYF,IEF}

DM BR SOONER {CHB,DLF,HYF,IEF}
BR BAILEE 1066 ET {DLF,HYF,IEF}
 43224862 BR GABRIELLE 5082 {DLF,HYF,IEF}

BW	WW	YW	Milk	M&G	YSC	REA	MARB	CHB
4.7	67	110	33	66	0.9	0.66	0.19	130

C Bailees Miles ended his show career as the Reserve Grand Champion bull at the Ft Worth Stock Show. The very next day he was out breeding cows here at W4. He is a true beef bull and to quote Guy Colyer, "he moves like a saddle horse". We feel he will add length and muscle in a moderate efficient package.



REF CL 1 DOMINO 7177E

DOB: 02/01/17 Bull 43800276 Tattoo: 7177E

CL 1 DOMINO 1161Y {DLF,HYF,IEF}
CL 1 DOMINO 5191C 1ET {DLF,HYF,IEF,MSUDF}
 43575937 CL 1 DOMINETTE 120Y {DLF,HYF,IEF}

CL 1 DOMINO 105Y {SOD,DLF,HYF,IEF}
CL 1 DOMINETTE 5201C 1ET {DLF,HYF,IEF,MSUDF}
 43576252 L1 DOMINETTE 02439 {DOD,DLF,HYF,IEF}

BW	WW	YW	Milk	M&G	YSC	REA	MARB	CHB
1.2	64	99	28	60	1.4	0.30	0.22	113

7177E is a calving ease L1 bull we added from the Cooper Herd in Montana. He has tremendous Calving Ease Direct EPD that ranks him in the top 2% breed. His calves are small and vigorous at birth with added pounds at weaning. He has good pigment and is solid marked.



REF CL 1 DOMINO 7195E

DOB: 02/04/17 Bull 43800290 Tattoo: 7195E

CL 1 DOMINO 9122W 1ET {DLF,HYF,IEF}
CL 1 DOMINO 215Z {CHB,DLF,HYF,IEF,MSUDF,MDF}
 43268007 CL 1 DOMINETTE 055X {DOD,DLF,HYF,IEF}

GB L1 DOMINO 175E {SOD,DLF,HYF,IEF}
CL 1 DOMINETTE 351A {DOD,DLF,HYF,IEF}
 43379691 CL 1 DOMINETTE 1118Y {DLF,HYF,IEF}

BW	WW	YW	Milk	M&G	YSC	REA	MARB	CHB
2.5	71	115	23	59	1.3	0.55	0.27	161

7195E was added to our herd sire lineup to add a L1 Bull with muscle and bone to go with his fantastic EPD profile--top 1% of the breed for WW and YW EPD! He also adds some great maternal cow families, not to mention the 100% pigment in both eyes and dark red color. This bull will make his mark on our program and the Hereford breed.



REF W4 W168 DOMINO B080

DOB: 02/27/14 Bull 43520661 Tattoo: B080

CL 1 DOMINO 477P {SOD,DLF,IEF}
W4 -S ADVANCE DOM W168 ET
 43045106 HH MISS ADVANCE 2111 M

C 212 DOMINO 4011 ET {CHB,SOD,DLF,HYF,IEF}
W4 4011 DOMET T127
 43020372 W4 25 DOMET P245

BW	WW	YW	Milk	M&G	YSC	REA	MARB	CHB
3.4	49	91	31	56	0.9	0.45	-0.05	93

B080 is a young bull we raised that is showing great promise as a herd bull. His first sons have tremendous muscle shape and have performed in the feed pen. He himself as a yearling bull gained over 5 lbs. a day on test at ST Genetics Bull Test in Navasota. His dam is a great producing daughter of 4011.



ADDITIONAL REFERENCE SIRES

KGB TFR KR SENSATION 028X 1600

BW: 1.3 WW: 57 YW: 91 Milk: 44 M&G: 73 YSC: 1.5 REA: 0.42 MARB: 0.27 CHB: 103

W4 955 DOMINO 136Y 2ET

BW: 3.1 WW: 53 YW: 86 Milk: 26 M&G: 53 YSC: 0.7 REA: 0.51 MARB: 0.01 CHB: 121

FS ADVANCE 353A

BW: 3.6 WW: 50 YW: 76 Milk: 31 M&G: 57 YSC: 1.0 REA: 0.20 MARB: -0.02 CHB: 96

FS ADVANCE 407B

BW: 1.6 WW: 47 YW: 75 Milk: 32 M&G: 56 YSC: 1.0 REA: 0.19 MARB: 0.07 CHB: 93

W4 S109 ADVANCE 502Y ET

BW: 4.6 WW: 51 YW: 85 Milk: 19 M&G: 44 YSC: 0.4 REA: 0.41 MARB: 0.10 CHB: 110

CHURCHILL TOP SPEED 548C ET

BW: 2.0 WW: 54 YW: 91 Milk: 23 M&G: 50 YSC: 0.5 REA: 0.55 MARB: -0.07 CHB: 118

FS ADVANCE 3001A ET

BW: 3.0 WW: 63 YW: 101 Milk: 33 M&G: 64 YSC: 1.2 REA: 0.43 MARB: 0.02 CHB: 112

C 212 DOMINO 4011 ET

BW: 1.9 WW: 50 YW: 87 Milk: 28 M&G: 53 YSC: 1.0 REA: 0.58 MARB: 0.14 CHB: 117

CHURCHILL BELLE HEIR 064H

BW: 2.5 WW: 61 YW: 95 Milk: 33 M&G: 64 YSC: 1.3 REA: 0.70 MARB: 0.17 CHB: 139

CHURCHILL ROUGH RIDER 9469G ET

BW: 1.4 WW: 64 YW: 109 Milk: 39 M&G: 71 YSC: 1.7 REA: 0.65 MARB: 0.30 CHB: 142

W4 NIGHTCAP G025

BW: 2.8 WW: 57 YW: 102 Milk: 31 M&G: 60 YSC: 1.3 REA: 0.46 MARB: 0.21 CHB: 132



Lots 1-76: Two-Year-Old Bulls



1 W4 548C TOP SPEED G514

DOB: 10/10/2019 Bull 44281198 Tattoo: G514

H/TSR/CHEZ/FULL THROTTLE ET {DLF,HYF,IEF}
CHURCHILL TOP SPEED 548C ET {DLF,HYF,IEF,MSUDF}
43586918 CHURCHILL LADY 002X ET {DLF,HYF,IEF,MSUDF,MDF}

B CHURCHILL 6033 {IEP}
W4 6033 DOMET A851 {IEP}
43725915 BC REAL PRINCESS F276

BW	WW	YW	Milk	M&G	YSC	REA	MARB	CHB
3.8	48	79	19	43	0.6	0.4	0	108

BW: 65 Adj. WW: 580 Adj. YW: 1189

2 W4 7195 DOMINO G519

DOB: 10/11/2019 Bull 44281200 Tattoo: G519

CL 1 DOMINO 215Z {CHB}{DLF,HYF,IEF,MSUDF,MDF}
CL 1 DOMINO 7195E {CHB}{DLF,HYF,IEF,MSUDF}
43800290 CL 1 DOMINETTE 351A {DOD}{DLF,HYF,IEF}

CHURCHILL SENSATION 028X {SOD}{DLF,HYF,IEF,MDF}
W4 SS 028X LADY A010
43429931 CHURCHILL LADY 183Y

BW	WW	YW	Milk	M&G	YSC	REA	MARB	CHB
1.9	63	100	30	62	1.3	0.5	0.22	138

BW: 61 Adj. WW: 549 Adj. YW: 1175

3 W4 392A MR BEEF G520

DOB: 10/12/2019 Bull 44281205 Tattoo: G520

CL 1 DOMINO 0141 1ET {SOD}{DLF,HYF,IEF}
DH DOMINO 392A {DLF,HYF,IEF,MSUDF}
43459361 DH MISS ADVANCE 9156 {DLF,HYF,IEF,MSUDF}

GOLDEN OAK OUTCROSS 18U {SOD}{DLF,HYF,IEF,MSUDF}
W4 MS MARK 100A ET
P43429606 GKB 146 MISS MARK B422 {DLF,HYF,IEF}

BW	WW	YW	Milk	M&G	YSC	REA	MARB	CHB
3.5	61	103	29	60	1.1	0.54	-0.04	102

BW: 69 Adj. WW: 587 Adj. YW: 1201



Lot 4

4 W4 106D HOMETOWN G539

DOB: 10/18/2019 Bull 44281206 Tattoo: G539

C 10Y HOMETOWN 4108 {DLF,HYF,IEF,MDP}
W4 4108 HOMETOWN 106D ET {DLF,HYF,IEF,MSUDF,MDF}
43742956 HH MISS ADVANCE 9168W {DLF,HYF,IEF}

FS ADVANCE 1123Y {DLF,HYF,IEF}
W4 1123Y ADVANCE D500 {HYP}
43872848 W4 4011 DOMET U068 {HYP}

BW	WW	YW	Milk	M&G	YSC	REA	MARB	CHB
3.7	57	90	32	61	1.2	0.42	0.14	115

BW: 74 Adj. WW: 605 Adj. YW: 1197



Lot 5

5 W4 7177 DOMINO G547

DOB: 10/18/2019 Bull 44281207 Tattoo: G547

CL1 DOMINO 5191C 1ET {DLF,HYF,IEF,MSUDF}
CL 1 DOMINO 7177E {DLF,HYF,IEF,MSUDF}
43800276 CL1 DOMINETTE 5201C 1ET {DLF,HYF,IEF,MSUDF}

HH ADVANCE 8203U ET {SOD}{DLF,IEF}
W4 8203 MS ADVANCE E041
43986975 MISS DOMINO M221

BW	WW	YW	Milk	M&G	YSC	REA	MARB	CHB
3.2	57	86	23	52	1.2	0.26	0.17	111

BW: 60 Adj. WW: 562 Adj. YW: 1149

6 W4 7177 DOMINO G548

DOB: 10/21/2019 Bull 44281208 Tattoo: G548

CL1 DOMINO 5191C 1ET {DLF,HYF,IEF,MSUDF}
CL 1 DOMINO 7177E {DLF,HYF,IEF,MSUDF}
43800276 CL1 DOMINETTE 5201C 1ET {DLF,HYF,IEF,MSUDF}

CL 1 DOMINO 193Y 1ET {DLF,HYF,IEF}
W4 193Y DOMET E022 {IEP}
43986857 W4 4011 DOMET Z048 {IEP}

BW	WW	YW	Milk	M&G	YSC	REA	MARB	CHB
1.4	51	82	28	54	1.1	0.26	0.13	108

BW: 62 Adj. WW: 577 Adj. YW: 1158



Lot 7

7 W4 7195 DOMINO G552

DOB: 10/22/2019 Bull 44281210 Tattoo: G552

CL 1 DOMINO 215Z {CHB}{DLF,HYF,IEF,MSUDF,MDF}
CL 1 DOMINO 7195E {CHB}{DLF,HYF,IEF,MSUDF}
43800290 CL 1 DOMINETTE 351A {DOD}{DLF,HYF,IEF}

H BANKER 613 ET {DLF,HYF,IEF}
W4 613 DOMET U520 {HYP,IEP}
43014825 W4 DOMET P091 {HYP,IEP}

BW	WW	YW	Milk	M&G	YSC	REA	MARB	CHB
3.1	58	98	23	52	1	0.48	0.22	144

BW: 65 Adj. WW: 610 Adj. YW: 1220

8**W4 7195 DOMINO G555**

DOB:10/23/2019 Bull 44281211 Tattoo:G555

CL 1 DOMINO 215Z {CHB}{DLF,HYF,IEF,MSUDF,MDF}
 CL 1 DOMINO 7195E {CHB}{DLF,HYF,IEF,MSUDF}
 43800290 CL 1 DOMINETTE 351A {DOD}{DLF,HYF,IEF}

FS ADVANCE 1120Y {DLF,HYF,IEF}
 W4 1120 DOMET B025 {DLP,HYP,IEP}
 43605010 W4 592 DOMET Y576 {DLP,HYP,IEP}

BW	WW	YW	Milk	M&G	YSC	REA	MARB	CHB
3.5	63	102	23	55	1.1	0.42	0.18	133

BW: 70 Adj. WW:600 Adj. YW:1218

**Lot 9****9****W4 7195 DOMINO G556**

DOB:10/22/2019 Bull 44281212 Tattoo:G556

CL 1 DOMINO 215Z {CHB}{DLF,HYF,IEF,MSUDF,MDF}
 CL 1 DOMINO 7195E {CHB}{DLF,HYF,IEF,MSUDF}
 43800290 CL 1 DOMINETTE 351A {DOD}{DLF,HYF,IEF}

L STAR DOMINO 212M S105
 W4 S105 DOMET Z537 {IEP}
 43491712 W4 188 DOMET S606 {IEP}

BW	WW	YW	Milk	M&G	YSC	REA	MARB	CHB
3.5	57	92	22	51	1	0.39	0.11	127

BW: 68 Adj. WW:615 Adj. YW:1220

**Lot 10****10****W4 0387 DOM G557**

DOB:10/25/2019 Bull 44281213 Tattoo:G557

UPS DOMINO 5216 {SOD}{DLF,IEF}
 DB 5216 DOM 0387 {DLF,HYF,IEF,MSUDF}
 43146486 DB MISS DOM 6005 {IEP}

CL 1 DOMINO 052X 1ET {DLF,HYF,IEF}
 B DOMINETTE 450B
 43620899 B LADY RIBSTONE 150Y

BW	WW	YW	Milk	M&G	YSC	REA	MARB	CHB
3.6	52	87	31	57	1.3	0.42	0.1	109

BW: 75 Adj. WW:580 Adj. YW:1204

**Lot 11****11****W4 0387 DOM G559**

DOB:10/22/2019 Bull 44281214 Tattoo:G559

UPS DOMINO 5216 {SOD}{DLF,IEF}
 DB 5216 DOM 0387 {DLF,HYF,IEF,MSUDF}
 43146486 DB MISS DOM 6005 {IEP}

CHURCHILL RANCHER 592R {SOD}{CHB}{DLF,IEF}
 W4 592 DOMET 123Y ET
 43212097 RCR AURUM MARY 02086

BW	WW	YW	Milk	M&G	YSC	REA	MARB	CHB
4.6	53	91	27	53	1.4	0.35	0.08	104

BW: 71 Adj. WW:605 Adj. YW:1230

12**W4 0387 DOM G560**

DOB:10/24/2019 Bull 44281215 Tattoo:G560

UPS DOMINO 5216 {SOD}{DLF,IEF}
 DB 5216 DOM 0387 {DLF,HYF,IEF,MSUDF}
 43146486 DB MISS DOM 6005 {IEP}

W4 607 STARFIRE U010 {DLF,HYP,IEC}
 W4 U010 DOMET Z075 {HYP,IEP}
 43413967 L STAR MS MOM'S PRIDE 3382S156 {IEP}

BW	WW	YW	Milk	M&G	YSC	REA	MARB	CHB
4.1	49	85	28	52	1.2	0.39	0.04	102

BW: 77 Adj. WW:560 Adj. YW:1190

**Lot 13****13****W4 106D HOMETOWN G536 {HYP}**

DOB:10/13/2019 Bull 44281286 Tattoo:G536

C 10Y HOMETOWN 4108 {DLF,HYF,IEF,MDP}
 W4 4108 HOMETOWN 106D ET {DLF,HYF,IEF,MSUDF,MDF}
 43742956 HH MISS ADVANCE 9168W {DLF,HYF,IEF}

CL 1 DOMINO 338A {DLF,HYF,IEF}
 W4 338A DOMINO D502 {HYP}
 43948093 DH L1 DOMINETTE 4138 {HYP}

BW	WW	YW	Milk	M&G	YSC	REA	MARB	CHB
3.8	56	88	33	61	1.3	0.41	0.09	110

BW: 65 Adj. WW:549 Adj. YW:1174

14 W4 B080 DOMINO G569

DOB:10/26/2019 Bull 44281216 Tattoo:G569

W4 -S ADVANCE DOM W168 ET
W4 W168 DOMINO B080 {DLF,HYF,IEF,MSUDF}
43520661 W4 4011 DOMET T127

HH ADVANCE 8203U ET {SOD}{DLF,IEF}
W4 8203 DOMET A030 {IEP}
43513600 C MS GAME PLAN 4007 ET {IEP}

BW	WW	YW	Milk	M&G	YSC	REA	MARB	CHB
4.4	50	80	24	49	0.9	0.37	0.01	102

BW: 77 Adj. WW:580 Adj. YW:1163

15 W4 B080 DOMINO G570

DOB:10/25/2019 Bull 44281217 Tattoo:G570

W4 -S ADVANCE DOM W168 ET
W4 W168 DOMINO B080 {DLF,HYF,IEF,MSUDF}
43520661 W4 4011 DOMET T127

HH ADVANCE 7110T ET {DLF,HYF,IEF}
EL MISS ADVANCE 009X {IEP}
43068404 HH MISS ADVANCE 346N 1ET {IEP}

BW	WW	YW	Milk	M&G	YSC	REA	MARB	CHB
2.8	47	79	27	50	1.1	0.37	-0.04	96

BW: 73 Adj. WW:546 Adj. YW:1135

16 W4 B080 DOMINO G571

DOB:10/25/2019 Bull 44281218 Tattoo:G571

W4 -S ADVANCE DOM W168 ET
W4 W168 DOMINO B080 {DLF,HYF,IEF,MSUDF}
43520661 W4 4011 DOMET T127

CHURCHILL SENSATION 028X {SOD}{DLF,HYF,IEF,MDF}
W4 028 DOMET A014
43513579 CHURCHILL LADY 162Y

BW	WW	YW	Milk	M&G	YSC	REA	MARB	CHB
3.2	53	85	34	60	1.2	0.4	0.07	103

BW: 70 Adj. WW:569 Adj. YW:1158

17 W4 B080 DOMINO G572

DOB:11/01/2019 Bull 44281219 Tattoo:G572

W4 -S ADVANCE DOM W168 ET
W4 W168 DOMINO B080 {DLF,HYF,IEF,MSUDF}
43520661 W4 4011 DOMET T127

MCR L91 MARK DOMINO 522 ET {IEP}
W4 522 DOMET Y719 {IEP}
43314237 W4 4011 DOMET T147 {IEP}

BW	WW	YW	Milk	M&G	YSC	REA	MARB	CHB
3.7	47	85	27	50	0.8	0.37	0.03	102

BW: 68 Adj. WW:559 Adj. YW:1200

18 W4 B080 DOMET G576

DOB:10/15/2019 Bull 44227337 Tattoo:G576

W4 -S ADVANCE DOM W168 ET
W4 W168 DOMINO B080 {DLF,HYF,IEF,MSUDF}
43520661 W4 4011 DOMET T127

HH ADVANCE 9005J {DLF,IEF}
W4 9005 DOMET 510Z {IEP}
43513603 C MS GAME PLAN 4007 ET {IEP}

BW	WW	YW	Milk	M&G	YSC	REA	MARB	CHB
3.3	45	78	24	46	0.8	0.33	-0.02	97

BW: 65 Adj. WW:589 Adj. YW:1205



19 W4 392A MR BEEF G588

DOB:11/02/2019 Bull 44281221 Tattoo:G588

CL 1 DOMINO 0141 1ET {SOD,DLF,HYF,IEF}
DH DOMINO 392A {DLF,HYF,IEF,MSUDF}
43459361 DH MISS ADVANCE 9156 {DLF,HYF,IEF,MSUDF}

HH ADVANCE 8203U ET {SOD,DLF,IEF}
W4 8203 MS ADVANCE A044 {IEP}
43429927 W4 1037 DOMET S655 {IEP}

BW	WW	YW	Milk	M&G	YSC	REA	MARB	CHB
4.0	61	96	27	58	1.0	0.39	0.01	106

BW: 60 Adj. WW:570 Adj. YW:1194

20 W4 310 RIBEYE G589

DOB:11/02/2019 Bull 44281222 Tattoo:G589

NJW 98S R117 RIBEYE 88X ET {SOD}{CHB}{DLF,HYF,IEF,MSUDF,MDF}
BAR-S-SOF MR 88X 310 {DLF,HYF,IEF}
43396221 BHF MISS KOOTER 602 {DLF,HYF,IEF}

RCR L1 PAT DOMINO 02062 {DLF,IEF}
B ROXANNE 743T
42910077 B SANDYANN 4028

BW	WW	YW	Milk	M&G	YSC	REA	MARB	CHB
4.1	50	81	26	51	0.5	0.35	0.1	111

BW: 68 Adj. WW:602 Adj. YW:1235



21 W4 310 RIBEYE G597

DOB:11/08/2019 Bull 44281223 Tattoo:G597

NJW 98S R117 RIBEYE 88X ET {SOD}{CHB}{DLF,HYF,IEF,MSUDF,MDF}
BAR-S-SOF MR 88X 310 {DLF,HYF,IEF}
43396221 BHF MISS KOOTER 602 {DLF,HYF,IEF}

NJW 98S R117 RIBEYE 88X ET {SOD}{CHB}{DLF,HYF,IEF,MSUDF,MDF}
GCC9152MISS RIBEYE ET
43509874 C MISS NITRO 9152 {DLF,HYF,IEF}

BW	WW	YW	Milk	M&G	YSC	REA	MARB	CHB
3.4	55	83	31	58	0.6	0.49	0.18	123

BW: 60 Adj. WW:620 Adj. YW:1258



Lot 22

22 W4 310 RIBEYE G599

DOB: 11/08/2019 Bull 44281224 Tattoo: G599

NJW 98S R117 RIBEYE 88X ET {SOD}{CHB}{DLF,HYF,IEF,MSUDF,MDF}
BAR-S-SOF MR 88X 310 {DLF,HYF,IEF}
 43396221 BHF MISS KOOTER 602 {DLF,HYF,IEF}

W4 592 DOMINO 102Y ET {DLF,HYF,IEF,MSUDF}
W4 102Y DOMET A018 {IEP}
 43519822 W4 S025 DOMET W577 {IEP}

BW	WW	YW	Milk	M&G	YSC	REA	MARB	CHB
3.7	51	78	28	54	0.5	0.42	0.16	118

BW: 66 Adj. WW: 589 Adj. YW: 1203

23 W4 4312 B MILES G601

DOB: 11/09/2019 Bull 44281225 Tattoo: G601

C MILES MCKEE 2103 ET {SOD}{CHB}{DLF,HYF,IEF,MSUDF,MDF}
C BAILEES MILES 4312 ET {DLF,HYF,IEF,MSUDF}
 43487323 BR BAILEE 1066 ET {DLF,HYF,IEF}

C 212 DOMINO 4011 ET {SOD}{CHB}{DLF,HYF,IEF}
W4 4011 DOMET U023 {IEP}
 42927411 H LADY WILDFIRE 6104 {IEP}

BW	WW	YW	Milk	M&G	YSC	REA	MARB	CHB
3.7	58	94	27	56	1	0.57	0.11	122

BW: 73 Adj. WW: 600 Adj. YW: 1215

24 W4 4312 B MILES G604

DOB: 11/18/2019 Bull 44281226 Tattoo: G604

C MILES MCKEE 2103 ET {SOD}{CHB}{DLF,HYF,IEF,MSUDF,MDF}
C BAILEES MILES 4312 ET {DLF,HYF,IEF,MSUDF}
 43487323 BR BAILEE 1066 ET {DLF,HYF,IEF}

B EXCEL 20 ET {DLF,HYF,IEF}
B LADY EXCELL 443B
 43620890 B DOMINETTE 728

BW	WW	YW	Milk	M&G	YSC	REA	MARB	CHB
4.8	55	89	29	56	0.9	0.41	0.12	116

BW: 72 Adj. WW: 570 Adj. YW: 1187

25 W4 4312 B MILES G605

DOB: 11/19/2019 Bull 44281227 Tattoo: G605

C MILES MCKEE 2103 ET {SOD}{CHB}{DLF,HYF,IEF,MSUDF,MDF}
C BAILEES MILES 4312 ET {DLF,HYF,IEF,MSUDF}
 43487323 BR BAILEE 1066 ET {DLF,HYF,IEF}

CL 1 DOMINO 314A {DLF,HYF,IEF}
B PI LADY 537C
 43722929 B ROXANNE 851

BW	WW	YW	Milk	M&G	YSC	REA	MARB	CHB
3.9	56	92	30	58	1.1	0.39	0.17	117

BW: 74 Adj. WW: 620 Adj. YW: 1165



Lot 26

26 W4 4312 B MILES G610

DOB: 11/19/2019 Bull 44281228 Tattoo: G610

C MILES MCKEE 2103 ET {SOD}{CHB}{DLF,HYF,IEF,MSUDF,MDF}
C BAILEES MILES 4312 ET {DLF,HYF,IEF,MSUDF}
 43487323 BR BAILEE 1066 ET {DLF,HYF,IEF}

CL 1 DOMINO 465P {DLF,HYF,IEF}
MISS DOMINO M222 {HYP}
 43338033 MISS DOMINO M253 {HYP}

BW	WW	YW	Milk	M&G	YSC	REA	MARB	CHB
3.8	51	83	27	53	0.8	0.38	0.09	111

BW: 70 Adj. WW: 560 Adj. YW: 1184

27 W4 4312 B MILES G611

DOB: 11/19/2019 Bull 44281229 Tattoo: G611

C MILES MCKEE 2103 ET {SOD}{CHB}{DLF,HYF,IEF,MSUDF,MDF}
C BAILEES MILES 4312 ET {DLF,HYF,IEF,MSUDF}
 43487323 BR BAILEE 1066 ET {DLF,HYF,IEF}

CL 1 DOMINO 697S {DLF,HYF,IEF}
MISS DOMINO M137 {HYP}
 43258190 MISS DOMINO M253 {HYP}

BW	WW	YW	Milk	M&G	YSC	REA	MARB	CHB
4.2	54	87	24	51	0.8	0.44	0.13	114

BW: 75 Adj. WW: 580 Adj. YW: 1217



Lot 28

28 W4 0387 DOM G613

DOB: 11/24/2019 Bull 44281230 Tattoo: G613

UPS DOMINO 5216 {SOD}{DLF,IEF}
DB 5216 DOM 0387 {DLF,HYF,IEF,MSUDF}
 43146486 DB MISS DOM 6005 {IEP}

B EXCEL 20 ET {DLF,HYF,IEF}
B LADY EXCELL 421B {IEP}
 43621159 B 629 ADVANCETTE 3000N {IEP}

BW	WW	YW	Milk	M&G	YSC	REA	MARB	CHB
3.7	46	83	27	50	1.1	0.2	0.1	100

BW: 68 Adj. WW: 611 Adj. YW: 1235

29**W4 7195 DOMINO G615**

DOB: 11/18/2019 Bull 44281231 Tattoo: G615

CL 1 DOMINO 215Z {CHB}{DLF,HYF,IEF,MSUDF,MDF}
CL 1 DOMINO 7195E {CHB}{DLF,HYF,IEF,MSUDF}
 43800290 CL 1 DOMINETTE 351A {DOD}{DLF,HYF,IEF}

W4 4011 DOMINO T154 {DLF,HYF,IEF}
W4 T154 DOMET A550 {IEP}
 43517321 W4 522 DOMET X034 {IEP}

BW	WW	YW	Milk	M&G	YSC	REA	MARB	CHB
3.3	61	102	23	54	1.1	0.55	0.18	143

BW: 58 Adj. WW: 546 Adj. YW: 1150

**30****W4 0387 DOM G618**

DOB: 11/01/2019 Bull 44226858 Tattoo: G618

UPS DOMINO 5216 {SOD}{DLF,IEF}
DB 5216 DOM 0387 {DLF,HYF,IEF,MSUDF}
 43146486 DB MISS DOM 6005 {IEP}

HH ADVANCE 492D {SOD}{DLF,IEF}
W4 492 DOMET Y505 {HYP,IEP}
 43314029 W4 613 DOMET U520 {HYP,IEP}

BW	WW	YW	Milk	M&G	YSC	REA	MARB	CHB
3.8	50	86	27	52	1	0.37	0.09	108

BW: 62 Adj. WW: 578 Adj. YW: 1175

31**W4 548C TOP SPEED G620**

DOB: 12/01/2019 Bull 44281232 Tattoo: G620

H/TSR/CHEZ/FULL THROTTLE ET {DLF,HYF,IEF}
CHURCHILL TOP SPEED 548C ET {DLF,HYF,IEF,MSUDF}
 43586918 CHURCHILL LADY 002X ET {DLF,HYF,IEF,MSUDF,MDF}

HH ADVANCE 8203U ET {SOD}{DLF,IEF}
W4 8203 DOMET Y610 {IEP}
 43314128 W4 058 DOMET N518 {IEP}

BW	WW	YW	Milk	M&G	YSC	REA	MARB	CHB
3.6	50	82	21	46	1	0.33	0.07	115

BW: 66 Adj. WW: 520 Adj. YW: 1145

32**W4 548C TOP SPEED G623**

DOB: 11/01/2019 Bull 44281233 Tattoo: G623

H/TSR/CHEZ/FULL THROTTLE ET {DLF,HYF,IEF}
CHURCHILL TOP SPEED 548C ET {DLF,HYF,IEF,MSUDF}
 43586918 CHURCHILL LADY 002X ET {DLF,HYF,IEF,MSUDF,MDF}

B TOP DOG 45Y {DLF,HYF,IEF}
B MISS SUNSHINE 431B {HYP}
 43622238 B MISS EXCEL 192Y {HYP}

BW	WW	YW	Milk	M&G	YSC	REA	MARB	CHB
3.2	52	84	24	51	0.8	0.42	0.02	109

BW: 68 Adj. WW: 560 Adj. YW: 1168

33**W4 0387 DOM G626**

DOB: 12/02/2019 Bull 44281234 Tattoo: G626

UPS DOMINO 5216 {SOD}{DLF,IEF}
DB 5216 DOM 0387 {DLF,HYF,IEF,MSUDF}
 43146486 DB MISS DOM 6005 {IEP}

CHURCHILL SENSATION 028X {SOD}{DLF,HYF,IEF,MDF}
B MISS SENSATIONAL 422B {IEP}
 43621138 B KATE 829U {IEP}

BW	WW	YW	Milk	M&G	YSC	REA	MARB	CHB
2.5	53	84	35	61	1.4	0.37	0.14	103

BW: 73 Adj. WW: 578 Adj. YW: 1190

34**W4 310 RIBEYE G630**

DOB: 12/01/2019 Bull 44281235 Tattoo: G630

NJW 98S R117 RIBEYE 88X ET {SOD}{CHB}{DLF,HYF,IEF,MSUDF,MDF}
BAR-S-SOF MR 88X 310 {DLF,HYF,IEF}
 43396221 BHF MISS KOOTER 602 {DLF,HYF,IEF}

C 212 DOMINO 4011 ET {SOD}{CHB}{DLF,HYF,IEF}
B LADY FOURS 213Z
 43300213 B AMERICAN HONEY 28X

BW	WW	YW	Milk	M&G	YSC	REA	MARB	CHB
2.9	50	79	29	54	0.7	0.48	0.18	125

BW: 70 Adj. WW: 560 Adj. YW: 1200

35**W4 310 RIBEYE G631**

DOB: 12/03/2019 Bull 44281236 Tattoo: G631

NJW 98S R117 RIBEYE 88X ET {SOD}{CHB}{DLF,HYF,IEF,MSUDF,MDF}
BAR-S-SOF MR 88X 310 {DLF,HYF,IEF}
 43396221 BHF MISS KOOTER 602 {DLF,HYF,IEF}

HH ADVANCE 8203U ET {SOD}{DLF,IEF}
W4 8203 ADVANCE 501Y ET
 43412241 RCR AURUM MARY 02086

BW	WW	YW	Milk	M&G	YSC	REA	MARB	CHB
4.4	51	77	25	51	0.8	0.41	0.16	121

BW: 74 Adj. WW: 611 Adj. YW: 1230

36**W4 7195 DOMINO G636**

DOB: 12/12/2019 Bull 44281238 Tattoo: G636

CL 1 DOMINO 215Z {CHB}{DLF,HYF,IEF,MSUDF,MDF}
CL 1 DOMINO 7195E {CHB}{DLF,HYF,IEF,MSUDF}
 43800290 CL 1 DOMINETTE 351A {DOD}{DLF,HYF,IEF}

CL 1 DOMINO 314A {DLF,HYF,IEF}
B PI LADY 532C {IEP}
 43722920 B MISS FOURS 143Y {IEP}

BW	WW	YW	Milk	M&G	YSC	REA	MARB	CHB
2.2	58	95	26	55	1.2	0.38	0.24	138

BW: 60 Adj. WW: 580 Adj. YW: 1187





Lot 37

37 W4 106D HOMETOWN G643

DOB: 11/19/2019 Bull 44281239 Tattoo: G643

C 10Y HOMETOWN 4108 {DLF,HYF,IEF,MDP}
W4 4108 HOMETOWN 106D ET {DLF,HYF,IEF,MSUDF,MDF}
 43742956 HH MISS ADVANCE 9168W {DLF,HYF,IEF}

W4 613 DOMINO W219
W4 W219 BANKER D529 {IEP}
 43833968 W4 8203 DOMET Y617 {IEP}

BW	WW	YW	Milk	M&G	YSC	REA	MARB	CHB
4.5	55	91	25	52	1.1	0.38	0.17	120

BW: 75 Adj. WW: 540 Adj. YW: 1135



Lot 38

38 W4 106D HOMETOWN G644

DOB: 11/15/2019 Bull 44281240 Tattoo: G644

C 10Y HOMETOWN 4108 {DLF,HYF,IEF,MDP}
W4 4108 HOMETOWN 106D ET {DLF,HYF,IEF,MSUDF,MDF}
 43742956 HH MISS ADVANCE 9168W {DLF,HYF,IEF}

DB 5216 DOM 0387 {DLF,HYF,IEF,MSUDF}
W4 0387 MS DOM D156
 43874013 B LADY BULLSEYE 771

BW	WW	YW	Milk	M&G	YSC	REA	MARB	CHB
4.4	54	88	29	56	1.3	0.33	0.11	104

BW: 73 Adj. WW: 560 Adj. YW: 1165

39 W4 106D HOMETOWN G646

DOB: 11/15/2019 Bull 44281241 Tattoo: G646

C 10Y HOMETOWN 4108 {DLF,HYF,IEF,MDP}
W4 4108 HOMETOWN 106D ET {DLF,HYF,IEF,MSUDF,MDF}
 43742956 HH MISS ADVANCE 9168W {DLF,HYF,IEF}

W4 860 DOMINO A311 {DLF,HYF,IEF,MSUDF}
W4 A311 DOMIND616 {HYP}
 43833901 W4 8203 DOMET A516 {HYP}

BW	WW	YW	Milk	M&G	YSC	REA	MARB	CHB
4.7	58	90	26	55	1.1	0.38	0.09	107

BW: 70 Adj. WW: 532 Adj. YW: 1138

40 W4 106D HOMETOWN G650

DOB: 11/23/2019 Bull 44281242 Tattoo: G650

C 10Y HOMETOWN 4108 {DLF,HYF,IEF,MDP}
W4 4108 HOMETOWN 106D ET {DLF,HYF,IEF,MSUDF,MDF}
 43742956 HH MISS ADVANCE 9168W {DLF,HYF,IEF}

W4 955 DOMINO 136Y 2ET {DLF,HYF,IEF,MSUDF}
W4 136Y DOMINO D722 {HYP}
 43765103 W4 6231 DOMET Z556 {HYP}

BW	WW	YW	Milk	M&G	YSC	REA	MARB	CHB
4	60	92	30	59	1.2	0.47	0.14	119

BW: 77 Adj. WW: 560 Adj. YW: 1180

41 W4 310 RIBEYE G653

DOB: 11/28/2019 Bull 44281246 Tattoo: G653

NJW 98S R117 RIBEYE 88X ET {SOD}\CHB\DLF,HYF,IEF,MSUDF,MDF}
BAR-S-SOF MR 88X 310 {DLF,HYF,IEF}
 43396221 BHF MISS KOOTER 602 {DLF,HYF,IEF}

RCR L1 AURUM DOMINO 08120 {DLF,HYF,IEF}
B LADY AURUM 487B {IEP}
 43621044 B MISS NEON MOON 25 ET {IEP}

BW	WW	YW	Milk	M&G	YSC	REA	MARB	CHB
3.3	51	77	27	52	0.4	0.43	0.15	120

BW: 70 Adj. WW: 568 Adj. YW: 1167

42 W4 106D HOMETOWN G654

DOB: 11/18/2019 Bull 44281247 Tattoo: G654

C 10Y HOMETOWN 4108 {DLF,HYF,IEF,MDP}
W4 4108 HOMETOWN 106D ET {DLF,HYF,IEF,MSUDF,MDF}
 43742956 HH MISS ADVANCE 9168W {DLF,HYF,IEF}

W4 S109 ADVANCE 502Y ET {DLF,HYF,IEF}
W4 502Y ADVANCE D550
 43833973 W4 S105 DOMET Y538

BW	WW	YW	Milk	M&G	YSC	REA	MARB	CHB
4.3	52	84	25	51	1	0.37	0.09	107

BW: 78 Adj. WW: 560 Adj. YW: 1174



Lot 43

43 W4 310 RIBEYE G655

DOB: 12/08/2019 Bull 44281248 Tattoo: G655

NJW 98S R117 RIBEYE 88X ET {SOD}\CHB\DLF,HYF,IEF,MSUDF,MDF}
BAR-S-SOF MR 88X 310 {DLF,HYF,IEF}
 43396221 BHF MISS KOOTER 602 {DLF,HYF,IEF}

TH 122 711 TOP SHELF 504X ET {DLF,HYF,IEF}
B LADY TOPSHELF 407B {IEP}
 43620833 B KATE 234Z {IEP}

BW	WW	YW	Milk	M&G	YSC	REA	MARB	CHB
2	45	71	29	52	0.7	0.29	0.15	116

BW: 70 Adj. WW: 603 Adj. YW: 1211

44**W4 7195 DOMINO G565**

DOB: 11/01/2019 Bull 44281287 Tattoo: G565

CL 1 DOMINO 215Z {CHB}{DLF,HYF,IEF,MSUDF,MDF}
CL 1 DOMINO 7195E {CHB}{DLF,HYF,IEF,MSUDF}
 43800290 CL 1 DOMINETTE 351A {DOD}{DLF,HYF,IEF}

RCR L1 AURUM DOMINO 08120 {DLF,HYF,IEF}
B MISS AURUM 396A {IEP}
 43514789 B 461 DOMINETTE 837 {IEP}

BW	WW	YW	Milk	M&G	YSC	REA	MARB	CHB
2.1	55	90	22	49	1	0.38	0.17	133

BW: 62 Adj. WW: 600 Adj. YW: 1215

45**W4 106D HOMETOWN G657**

DOB: 12/01/2019 Bull 44281249 Tattoo: G657

C 10Y HOMETOWN 4108 {DLF,HYF,IEF,MDP}
W4 4108 HOMETOWN 106D ET {DLF,HYF,IEF,MSUDF,MDF}
 43742956 HH MISS ADVANCE 9168W {DLF,HYF,IEF}

W4 613 DOMINO W219
W4 W219 DOMET D051 {HYP}
 43874005 CHURCHILL LADY 7164T {HYP}

BW	WW	YW	Milk	M&G	YSC	REA	MARB	CHB
4.2	53	90	28	54	1	0.38	0.16	118

BW: 71 Adj. WW: 532 Adj. YW: 1123

**Lot 46****46****W4 310 RIBEYE G658**

DOB: 11/10/2019 Bull 44281250 Tattoo: G658

NJW 98S R117 RIBEYE 88X ET {SOD}{CHB}{DLF,HYF,IEF,MSUDF,MDF}
BAR-S-SOF MR 88X 310 {DLF,HYF,IEF}
 43396221 BHF MISS KOOTER 602 {DLF,HYF,IEF}

HH ADVANCE 1098Y {DLF,HYF,IEF}
FS MISS ADVANCE 462B
 43546937 -S MISS ADVANCE DOM 4029P U211 {DLF,HYF,IEF}

BW	WW	YW	Milk	M&G	YSC	REA	MARB	CHB
3.4	53	79	33	59	0.8	0.5	0.1	118

BW: 66 Adj. WW: 560 Adj. YW: 1145

47**W4 310 RIBEYE G659**

DOB: 12/11/2019 Bull 44281251 Tattoo: G659

NJW 98S R117 RIBEYE 88X ET {SOD}{CHB}{DLF,HYF,IEF,MSUDF,MDF}
BAR-S-SOF MR 88X 310 {DLF,HYF,IEF}
 43396221 BHF MISS KOOTER 602 {DLF,HYF,IEF}

CHURCHILL SENSATION 028X {SOD}{DLF,HYF,IEF,MDF}
B MISS SENSATIONAL 266Z
 43298651 B 303 LADY EXCEL 645

BW	WW	YW	Milk	M&G	YSC	REA	MARB	CHB
1.8	45	71	33	56	0.8	0.39	0.21	121

BW: 63 Adj. WW: 584 Adj. YW: 1178

48**W4 7195 DOMINO G662**

DOB: 12/18/2019 Bull 44281254 Tattoo: G662

CL 1 DOMINO 215Z {CHB}{DLF,HYF,IEF,MSUDF,MDF}
CL 1 DOMINO 7195E {CHB}{DLF,HYF,IEF,MSUDF}
 43800290 CL 1 DOMINETTE 351A {DOD}{DLF,HYF,IEF}

HH ADVANCE 041K 1ET {DLF,IEC}
W4 041 DOMET U295 {IEP}
 43038352 CHURCHILL LADY 1138 1ET {IEP}

BW	WW	YW	Milk	M&G	YSC	REA	MARB	CHB
2.9	55	87	20	48	1	0.33	0.22	134

BW: 62 Adj. WW: 590 Adj. YW: 1200

**Lot 49****49****W4 7177 DOMINO G669**

DOB: 12/04/2019 Bull 44281261 Tattoo: G669

CL1 DOMINO 5191C 1ET {DLF,HYF,IEF,MSUDF}
CL 1 DOMINO 7177E {DLF,HYF,IEF,MSUDF}
 43800276 CL1 DOMINETTE 5201C 1ET {DLF,HYF,IEF,MSUDF}

DB 5216 DOM 0387 {DLF,HYF,IEF,MSUDF}
W4 0387 DOMET E159 {IEP}
 43986630 W4 102Y DOMET A017 {IEP}

BW	WW	YW	Milk	M&G	YSC	REA	MARB	CHB
2.8	60	96	27	57	1.3	0.32	0.16	108

BW: 60 Adj. WW: 548 Adj. YW: 1176

50**W4 106D HOMETOWN G670**

DOB: 12/05/2019 Bull 44281264 Tattoo: G670

C 10Y HOMETOWN 4108 {DLF,HYF,IEF,MDP}
W4 4108 HOMETOWN 106D ET {DLF,HYF,IEF,MSUDF,MDF}
 43742956 HH MISS ADVANCE 9168W {DLF,HYF,IEF}

CHURCHILL DOMINO 166Y {DLF,HYF,IEF,MSUDF}
W4 166Y DOMINO D558 {HYP}
 43833967 W4 870 DOMET Z028 {HYP}

BW	WW	YW	Milk	M&G	YSC	REA	MARB	CHB
4.6	55	85	25	53	1.1	0.35	0.13	109

BW: 66 Adj. WW: 536 Adj. YW: 1123

**Lot 47**

51**W4 102Y RANCHER G671**

DOB: 12/01/2019 Bull 44281265 Tattoo: G671

CHURCHILL RANCHER 592R {SOD}{CHB}{DLF,IEF}
W4 592 DOMINO 102Y ET {DLF,HYF,IEF,MSUDF}
 43212083 BR 74 ALAINNA 3113 {DLP,HYP}

CHURCHILL SENSATION 028X {SOD}{DLF,HYF,IEF,MDF}
B MISS SENSATIONAL 437B
 43620874 B AMERICAN HONEY 119Y

BW	WW	YW	Milk	M&G	YSC	REA	MARB	CHB
3.4	53	84	29	55	1	0.26	0.19	107

BW: 75 Adj. WW: 549 Adj. YW: 1178

**52****W4 407 ADVANCE G676**

DOB: 12/11/2019 Bull 44281267 Tattoo: G676

HH ADVANCE 2125Z {DLF,HYF,IEF}
S ADVANCE 407B {DLF,HYF,IEF}
 43466166 CL 1 DOMINETTE 057X {DLF,HYF,IEF}

GH ADAMS NORTHERN YANK ET 230U
B MISTY ROBIN 381A {IEP}
 43473222 B LADY EXCELL 4016 {IEP}

BW	WW	YW	Milk	M&G	YSC	REA	MARB	CHB
3	45	75	27	50	1	0.09	0.15	104

BW: 70 Adj. WW: 539 Adj. YW: 1145

53**W4 407 ADVANCE G677**

DOB: 12/15/2019 Bull 44281268 Tattoo: G677

HH ADVANCE 2125Z {DLF,HYF,IEF}
FS ADVANCE 407B {DLF,HYF,IEF}
 43466166 CL 1 DOMINETTE 057X {DLF,HYF,IEF}

GO THE NATURAL T15 {DLF,HYF,IEF}
W4 T15 DOMET Z643 {IEP}
 43491750 W4 522 DOMET T613 {IEP}

BW	WW	YW	Milk	M&G	YSC	REA	MARB	CHB
3.1	47	72	30	53	0.9	0.15	0.03	97

BW: 72 Adj. WW: 589 Adj. YW: 1211

54**W4 407 ADVANCE G678**

DOB: 12/18/2019 Bull 44281269 Tattoo: G678

HH ADVANCE 2125Z {DLF,HYF,IEF}
FS ADVANCE 407B {DLF,HYF,IEF}
 43466166 CL 1 DOMINETTE 057X {DLF,HYF,IEF}

C MOLER 6213 ET {DLF,HYF,IEF}
W4 6213 DOMET Y677
 43314192 W4 8055 DOMET N497

BW	WW	YW	Milk	M&G	YSC	REA	MARB	CHB
3.3	45	68	27	49	0.8	0.21	0.05	99

BW: 65 Adj. WW: 539 Adj. YW: 1164

55**W4 407 ADVANCE G679**

DOB: 12/17/2019 Bull 44281270 Tattoo: G679

HH ADVANCE 2125Z {DLF,HYF,IEF}
FS ADVANCE 407B {DLF,HYF,IEF}
 43466166 CL 1 DOMINETTE 057X {DLF,HYF,IEF}

H BANKER 613 ET {DLF,HYF,IEF}
W4 613 DOMET Y056
 43211741 L STAR MISS ADVANCE 026K M188

BW	WW	YW	Milk	M&G	YSC	REA	MARB	CHB
3.4	48	77	26	50	0.9	0.36	0.1	117

BW: 66 Adj. WW: 548 Adj. YW: 1174

56**W4 310 RIBEYE G681**

DOB: 12/15/2019 Bull 44281271 Tattoo: G681

NJW 98S R117 RIBEYE 88X ET {SOD}{CHB}{DLF,HYF,IEF,MSUDF,MDF}
BAR-S-SOF MR 88X 310 {DLF,HYF,IEF}
 43396221 BHF MISS KOOTER 602 {DLF,HYF,IEF}

HH ADVANCE 8203U ET {SOD}{DLF,IEF}
W4 8203 DOMET 516Z
 43513734 CCLC GKB MISS GAME PLAN 33 ET {DLF,HYF,IEF}

BW	WW	YW	Milk	M&G	YSC	REA	MARB	CHB
4	54	77	28	55	0.7	0.46	0.15	124

BW: 62 Adj. WW: 563 Adj. YW: 1203

57**W4 102Y RANCHER G684**

DOB: 12/05/2019 Bull 44281285 Tattoo: G684

CHURCHILL RANCHER 592R {SOD}{CHB}{DLF,IEF}
W4 592 DOMINO 102Y ET {DLF,HYF,IEF,MSUDF}
 43212083 BR 74 ALAINNA 3113 {DLP,HYP}

HH ADVANCE 2136M {IEP}
-S MISS ADVANCE DOM 3037 S81 {IEP}
 42735861 XP L1 DOMINETTE 03037 {IEP}

BW	WW	YW	Milk	M&G	YSC	REA	MARB	CHB
3.8	43	73	20	41	0.4	0.08	0.17	103

BW: 74 Adj. WW: 530 Adj. YW: 1140

58**W4 392A MR BEEF G702**

DOB: 12/18/2019 Bull 44281272 Tattoo: G702

CL 1 DOMINO 0141 1ET {SOD}{DLF,HYF,IEF}
DH DOMINO 392A {DLF,HYF,IEF,MSUDF}
 43459361 DH MISS ADVANCE 9156 {DLF,HYF,IEF,MSUDF}

H W4 GRIZZLY 0146 ET {DLF,HYF,IEF}
W4 0146 GRIZZLY GIRL 102C ET
 P43596309 W4 279R DOMINET 9520 ET {DLF,HYF,IEF}

BW	WW	YW	Milk	M&G	YSC	REA	MARB	CHB
3.3	63	104	32	63	1.1	0.62	-0.03	108

BW: 65 Adj. WW: 611 Adj. YW: 1235

59**W4 392A MR BEEF G703**

DOB: 12/21/2019 Bull 44281273 Tattoo: G703

CL 1 DOMINO 0141 1ET {SOD}{DLF,HYF,IEF}
DH DOMINO 392A {DLF,HYF,IEF,MSUDF}
 43459361 DH MISS ADVANCE 9156 {DLF,HYF,IEF,MSUDF}

W4 4011 DOMINO S025 {DLF,IEF}
W4 S025 DOMET A123
 43513613 W4 6213 DOMET 9400 ET1

BW	WW	YW	Milk	M&G	YSC	REA	MARB	CHB
3.1	57	92	31	60	0.9	0.56	-0.06	105

BW: 62 Adj. WW: 589 Adj. YW: 1200

60 W4 0387 DOM G704

DOB: 12/17/2019 Bull 44281274 Tattoo: G704

UPS DOMINO 5216 {SOD}{DLF,IEF}
DB 5216 DOM 0387 {DLF,HYF,IEF,MSUDF}
43146486 DB MISS DOM 6005 {IEP}

JA L1 DOMINO 8211U
DH L1 DOMINETTE 462 {HYP,IEP}
43485331 DH L1 DOMINETTE 883 {HYP,IEP}

BW	WW	YW	Milk	M&G	YSC	REA	MARB	CHB
3.3	57	95	26	55	1.3	0.3	0.06	97

BW: 73 Adj. WW: 568 Adj. YW: 1179

61 W4 0387 DOM G705

DOB: 12/27/2019 Bull 44281275 Tattoo: G705

UPS DOMINO 5216 {SOD}{DLF,IEF}
DB 5216 DOM 0387 {DLF,HYF,IEF,MSUDF}
43146486 DB MISS DOM 6005 {IEP}

CL 1 DOMINO 072X {DLF,HYF,IEF}
B MISS 72X DOMINETTE 564C {IEP}
43724342 B 295 DOMINETTE 972 {IEP}

BW	WW	YW	Milk	M&G	YSC	REA	MARB	CHB
3.5	50	81	31	56	1.3	0.36	0.08	107

BW: 69 Adj. WW: 610 Adj. YW: 1219

62 W4 106D HOMETOWN G712

DOB: 12/20/2019 Bull 44281277 Tattoo: G712

C 10Y HOMETOWN 4108 {DLF,HYF,IEF,MDP}
W4 4108 HOMETOWN 106D ET {DLF,HYF,IEF,MSUDF,MDP}
43742956 HH MISS ADVANCE 9168W {DLF,HYF,IEF}

JA L1 DOMINO 0234X
DH L1 DOMINETTE 484 {HYP}
43484991 DH L1 DOMINETTE 099 {HYP}

BW	WW	YW	Milk	M&G	YSC	REA	MARB	CHB
4	58	93	26	55	1.3	0.38	0.09	106

BW: 69 Adj. WW: 568 Adj. YW: 1189

63 W4 106D HOMETOWN G713

DOB: 12/20/2019 Bull 442812778 Tattoo: G713

C 10Y HOMETOWN 4108 {DLF,HYF,IEF,MDP}
W4 4108 HOMETOWN 106D ET {DLF,HYF,IEF,MSUDF,MDP}
43270656 HH MISS ADVANCE 9168W {DLF,HYF,IEF}

KTP C&M LEGACY 2002 {DLF,HYF,IEF}
W4 2002 LEGACY C031 {DLP,HYP}
43765150 W4 955 DOMET 113Z ET {DLP,HYP}

BW	WW	YW	Milk	M&G	YSC	REA	MARB	CHB
3.9	55	88	29	56	1.0	0.36	0.16	116

BW: 63 Adj. WW: 540 Adj. YW: 1150

64 W4 392A MR BEEF G715

DOB: 12/25/2019 Bull 44281279 Tattoo: G715

CL 1 DOMINO 0141 1ET {SOD}{DLF,HYF,IEF}
DH DOMINO 392A {DLF,HYF,IEF,MSUDF}
43459361 DH MISS ADVANCE 9156 {DLF,HYF,IEF,MSUDF}

W4 4011 DOMINO T154 {DLF,HYF,IEF}
W4 T154 DOMET A556 {IEP}
43517309 W4 T15 DOMET W086 {IEP}

BW	WW	YW	Milk	M&G	YSC	REA	MARB	CHB
2.8	58	99	30	59	1.1	0.56	0.01	115

BW: 65 Adj. WW: 590 Adj. YW: 1234

65 W4 392A MR BEEF G719

DOB: 12/28/2019 Bull 44281281 Tattoo: G719

CL 1 DOMINO 0141 1ET {SOD}{DLF,HYF,IEF}
DH DOMINO 392A {DLF,HYF,IEF,MSUDF}
43459361 DH MISS ADVANCE 9156 {DLF,HYF,IEF,MSUDF}

H HVR DOMINO 870 ET {HYP}
W4 870 DOMINO A578 {HYP}
43517244 B LADY BULLSEYE 661

BW	WW	YW	Milk	M&G	YSC	REA	MARB	CHB
2.8	56	95	29	57	0.7	0.45	-0.01	105

BW: 64 Adj. WW: 562 Adj. YW: 1188

66 2C W4 MR. BEEF DOMET

DOB: 08/06/2019 Bull 44235059 Tattoo: G001

HH ADVANCE 8203U ET {SOD}{DLF,IEF}
W4 392A MR BEEF D557 {DLF,HYF,IEF,MSUDF}
43924628 W4 955 MAGGIE 134Y ET {DLF,HYF,IEF}

W4 613 DOMINO W219
W4 W219 DOMET E001 {IEP}
43928294 W4 9005 DOMET 506Z {IEP}

BW	WW	YW	Milk	M&G	YSC	REA	MARB	CHB
5.1	52	90	22	48	1.2	0.46	0.05	125

BW: 74 Adj. WW: 645 Adj. YW: 1289

67 SPRING CREEK G07

DOB: 08/08/2019 Bull 44265484 Tattoo: G07

DH DOMINO 109Y {DLF,HYF,IEF}
W4 109Y DOMINO D718 {DLF,HYF,IEF,MSUDF}
43931167 DH MS ADVANCE 3192

C NOTICE ME MAXIUM 1206 ET {DLF,HYF,IEF}
GKB 1206 MISS EDEE 163CC
43683217 GKB 146 MISS EDEE B08 ET

BW	WW	YW	Milk	M&G	YSC	REA	MARB	CHB
4.5	53	83	27	53	0.9	0.46	-0.13	98

BW: 65 Adj. WW: 560 Adj. YW: 1147

68 SPRING CREEK G04

DOB: 08/03/2019 Bull 44265481 Tattoo: G04

DH DOMINO 109Y {DLF,HYF,IEF}
W4 109Y DOMINO D718 {DLF,HYF,IEF,MSUDF}
43931167 DH MS ADVANCE 3192

W4 613 ACHIEVER U006 {DLF,IEF}
SPRING CREEK E6
44059521 W4 4011 DOMET T109

BW	WW	YW	Milk	M&G	YSC	REA	MARB	CHB
4.6	54	94	28	55	0.9	0.46	-0.06	110

BW: 70 Adj. WW: 589 Adj. YW: 1158

69 SPRING CREEK G05

DOB: 08/04/2019 Bull 44265482 Tattoo: G05

DH DOMINO 109Y {DLF,HYF,IEF}
W4 109Y DOMINO D718 {DLF,HYF,IEF,MSUDF}
43931167 DH MS ADVANCE 3192

W4 613 ACHIEVER U006 {DLF,IEF}
SPRING CREEK C02
43647112 GKB RENO MISS MARK 9205 ET

BW	WW	YW	Milk	M&G	YSC	REA	MARB	CHB
4.9	54	89	26	53	0.8	0.41	-0.05	109

BW: 75 Adj. WW: 530 Adj. YW: 1130

70**SPRING CREEK G08**

DOB: 08/11/2019 Bull 44265485 Tattoo: G08

DH DOMINO 109Y {DLF,HYF,IEF}

W4 109Y DOMINO D718 {DLF,HYF,IEF,MSUDF}

43931167 DH MS ADVANCE 3192

W4 613 ACHIEVER U006 {DLF,IEF}

SPRING CREEK C07 {DLP,HYP,IEP}

43647121 W4 522 DOMET U572 {DLP,HYP,IEP}

BW	WW	YW	Milk	M&G	YSC	REA	MARB	CHB
5.1	55	92	26	54	0.9	0.41	-0.05	108

BW: 71 Adj. WW: 560 Adj. YW: 1140

71**SPRING CREEK G09**

DOB: 08/12/2019 Bull 44265486 Tattoo: G09

DH DOMINO 109Y {DLF,HYF,IEF}

W4 109Y DOMINO D718 {DLF,HYF,IEF,MSUDF}

43931167 DH MS ADVANCE 3192

C 212 DOMINO 4011 ET {SOD}X{CHB}X{DLF,HYF,IEF}

W4 4011 DOMET T131 {HYP,IEP}

42841295 W4 833 DOMET P250 {HYP,IEP}

BW	WW	YW	Milk	M&G	YSC	REA	MARB	CHB
4.2	54	91	27	54	1	0.38	-0.03	108

BW: 65 Adj. WW: 550 Adj. YW: 1158

72**SPRING CREEK G19**

DOB: 08/13/2019 Bull 44265497 Tattoo: G19

HH ADVANCE 8203U ET {SOD}X{DLF,IEF}

W4 392A MR BEEF D557 {DLF,HYF,IEF,MSUDF}

43924628 W4 955 MAGGIE 134Y ET {DLF,HYF,IEF}

B FOREMOST 24C {DLF,HYF,IEF}

W4 24C DOMET E077 {IEP}

43928323 B PI LADY 506C {IEP}

BW	WW	YW	Milk	M&G	YSC	REA	MARB	CHB
3.9	56	90	24	52	1.5	0.44	0.13	121

BW: 63 Adj. WW: 580 Adj. YW: 1189

**Lot 73****73****SPRING CREEK G22**

DOB: 08/20/2019 Bull 44265502 Tattoo: G22

HH ADVANCE 8203U ET {SOD}X{DLF,IEF}

W4 392A MR BEEF D557 {DLF,HYF,IEF,MSUDF}

43924628 W4 955 MAGGIE 134Y ET {DLF,HYF,IEF}

W4 613 ACHIEVER U006 {DLF,IEF}

SPRING CREEK C03

43647113 W4 188 DOMET U558

BW	WW	YW	Milk	M&G	YSC	REA	MARB	CHB
5.3	53	89	23	49	1.2	0.49	0.03	124

BW: 74 Adj. WW: 610 Adj. YW: 1250

**Lot 74****74****W4 RV ADVANCE G801**

DOB: 09/16/2019 Bull 44154424 Tattoo: G801

HH ADVANCE 0081X ET {DLF,HYF,IEF}

FS ADVANCE 620D {DLF,HYF,IEF,MSUDF}

43681936 HH MISS ADVANCE 0299X ET {DLF,HYF,IEF}

FS ADVANCE 3001A ET {DLF,HYF,IEF}

W4 3001 MS ADVANCE E158

43928328 MISS DOMINO M501

BW	WW	YW	Milk	M&G	YSC	REA	MARB	CHB
3.4	55	87	29	56	1.3	0.33	-0.07	95

BW: 62 Adj. WW: 568 Adj. YW: 1185

75**W4 RV ADVANCE G802**

DOB: 08/26/2019 Bull 44156924 Tattoo: G802

HH ADVANCE 0081X ET {DLF,HYF,IEF}

FS ADVANCE 620D {DLF,HYF,IEF,MSUDF}

43681936 HH MISS ADVANCE 0299X ET {DLF,HYF,IEF}

HH ADVANCE 9075W ET {SOD}X{DLF,HYF,IEF}

FS MISS ADVANCE 263Z {DLF,HYF,IEF}

43348601 HH MISS ADVANCE 9168W {DLF,HYF,IEF}

BW	WW	YW	Milk	M&G	YSC	REA	MARB	CHB
3.8	52	81	25	51	1.3	0.46	-0.11	97

BW: 66 Adj. WW: 575 Adj. YW: 1175

**Lot 76****76****W4 RV ADVANCE G803**

DOB: 10/03/2019 Bull 44156925 Tattoo: G803

HH ADVANCE 0081X ET {DLF,HYF,IEF}

FS ADVANCE 620D {DLF,HYF,IEF,MSUDF}

43681936 HH MISS ADVANCE 0299X ET {DLF,HYF,IEF}

UPS TCC NITRO 1ET {SOD}X{DLF,HYF,IEF}

C NITRO LADY 1199

43190347 C MS GAME PLAN 5089 ET {DLF,HYF,IEF}

BW	WW	YW	Milk	M&G	YSC	REA	MARB	CHB
3.9	52	83	24	50	0.9	0.39	-0.02	103

BW: 65 Adj. WW: 600 Adj. YW: 1208



77 W4 392A MR BEEF 103H ET

DOB: 04/02/2020 Bull 44186645 Tattoo: 103H

CL 1 DOMINO 0141 1ET {SOD}{DLF,HYF,IEF}
 DH DOMINO 392A {DLF,HYF,IEF,MSUDF}
 43459361 DH MISS ADVANCE 9156 {DLF,HYF,IEF,MSUDF}

SR BAKKEN 62Z {SOD}{CHB}{DLF,HYF,IEF}
 CHURCHILL LADY 5131C ET {DLF,HYF,IEF,MSUDF}
 43586786 CHURCHILL LADY 9123W ET {DLF,HYF,IEF}

Powerful Herd Sire

BW	WW	YW	Milk	M&G	YSC	REA	MARB	CHB
3.2	65	113	37	69	1.2	0.57	0.09	121
BW: 68		Adj. WW: 705			Adj. YW: 1340			

This embryo calf out of our Churchill Donor cow, 5131 has herd bull written all over him! He is powerfully built from the ground up and really deep sided. His dam, 5131 was the top selling female at Churchill's sale and has proven herself in the donor pen. Her first daughter sold for \$18,000 and she just produced Churchill W4 Roughneck 0280, who sold for \$25,000 for 1/2 interest to Express Ranches in Oklahoma. His sire, 392A has done a great job for us and 103H may be his best son.

Selling 3/4 Interest and Full Possession.

78 W4 136Y DOMINO H001

DOB: 02/08/2020 Bull 44281288 Tattoo: H001

CL 1 DOMINO 955W {SOD}{CHB}{DLF,HYF,IEF}
 W4 955 DOMINO 136Y 2ET {DLF,HYF,IEF,MSUDF}
 43212032 C MS PURE GOLD 5007 ET {DLF,HYF,IEF}

F 157K RIBSTONE 763 {SOD}{CHB}{DLF,HYF,IEF}
 B MISS RIBSTONE 540C
 43722932 B MISTY ROBIN 243Z

BW	WW	YW	Milk	M&G	YSC	REA	MARB	CHB
2.9	48	81	24	48	1.1	0.35	0.13	126

BW: 75 Adj. WW: 560 Adj. YW: 1209

79 W4 8117 DOMINO H003

DOB: 02/01/2020 Bull 44281289 Tattoo: H003

CL 1 DOMINO 6187D {CHB}{DLF,HYF,IEF,MSUDF}
 CL 1 DOMINO 8117F 1ET {CHB}{DLF,HYF,IEF}
 43903300 CL1 DOMINETTE 4131B {DLF,HYF,IEF}

HH ADVANCE 5044C ET {CHB}{DLF,HYF,IEF,MSUDF}
 CHURCHILL LADY 834F
 43919920 CHURCHILL LADY 669D

BW	WW	YW	Milk	M&G	YSC	REA	MARB	CHB
0.1	54	82	36	63	1.2	0.39	0.33	137

BW: 60 Adj. WW: 582 Adj. YW: 1214



80 W4 1600 SENSATION H014
 DOB: 02/12/2020 Bull 44281290 Tattoo: H014

CHURCHILL SENSATION 028X {SOD}{DLF,HYF,IEF,MDF}
 KGB TFR KR SENSATION 028X 1600 {DLF,HYF,IEF,MDP}
 43772981 H LAYLA 3521 {MDP}

C BAILEES MILES 4312 ET {DLF,HYF,IEF,MSUDF}
 W4 4312 HONEY BAILEE E734 {IEP}
 44059893 B STACIAS HONEY 215Z {IEP}

BW	WW	YW	Milk	M&G	YSC	REA	MARB	CHB
3.1	56	89	37	65	1.2	0.39	0.2	118

BW: 62 Adj. WW: 589 Adj. YW: 1204

81 W4 353 ADVANCE H017
 DOB: 02/16/2020 Bull 44281291 Tattoo: H017

HH ADVANCE 1098Y {DLF,HYF,IEF}
 FS ADVANCE 353A {DLF,HYF,IEF}
 43444412 HH MISS ADVANCE 9068W ET {DLF,HYF,IEF}

HH ADVANCE 8203U ET {SOD}{DLF,IEF}
 W4 8203 DOMET 516Y ET
 43412397 RCR AURUM MARY 02086

BW	WW	YW	Milk	M&G	YSC	REA	MARB	CHB
4.5	52	74	24	50	1.1	0.23	0.05	102

BW: 71 Adj. WW: 570 Adj. YW: 1190

82 W4 7195 DOMINO H032
 DOB: 02/15/2020 Bull 44281292 Tattoo: H032

CL 1 DOMINO 215Z {CHB}{DLF,HYF,IEF,MSUDF,MDF}
 CL 1 DOMINO 7195E {CHB}{DLF,HYF,IEF,MSUDF}
 43800290 CL 1 DOMINETTE 351A {DOD}{DLF,HYF,IEF}

HH ADVANCE 5044C ET {CHB}{DLF,HYF,IEF,MSUDF}
 CHURCHILL LADY 7227E
 43802027 CHURCHILL LADY 1160Y ET {DOD}{DLF,HYF,IEF}

BW	WW	YW	Milk	M&G	YSC	REA	MARB	CHB
2.5	66	105	28	61	1.1	0.55	0.2	143

BW: 62 Adj. WW: 604 Adj. YW: 1240

83 W4 1600 SENSATION H033
 DOB: 02/15/2020 Bull 44281293 Tattoo: H033

CHURCHILL SENSATION 028X {SOD}{DLF,HYF,IEF,MDF}
 KGB TFR KR SENSATION 028X 1600 {DLF,HYF,IEF,MDP}
 43772981 H LAYLA 3521 {MDP}

FS ADVANCE 1120Y {DLF,HYF,IEF}
 W4 1120Y MS ADVANCE D587 {IEP}
 43946244 W4 4011 DOMET T122 {IEP}

BW	WW	YW	Milk	M&G	YSC	REA	MARB	CHB
3.2	56	90	33	61	1.1	0.36	0.13	110

BW: 60 Adj. WW: 568 Adj. YW: 1170

84 W4 8117 DOMINO H054
 DOB: 02/25/2020 Bull 44281294 Tattoo: H054

CL 1 DOMINO 6187D {CHB}{DLF,HYF,IEF,MSUDF}
 CL 1 DOMINO 8117F 1ET {CHB}{DLF,HYF,IEF}
 43903300 CL 1 DOMINETTE 4131B {DLF,HYF,IEF}

CL 1 DOMINO 6128D 1ET {CHB}{DLF,HYF,IEF,MSUDF}
 CHURCHILL LADY 878F
 43919951 CHURCHILL LADY 375A

BW	WW	YW	Milk	M&G	YSC	REA	MARB	CHB
1.4	55	90	34	62	1.2	0.52	0.3	141

BW: 62 Adj. WW: 580 Adj. YW: 1200



85 W4 101D JAKE H073
 DOB: 03/01/2020 Bull 44281296 Tattoo: H073

TFR KU ROLL THE DICE 1326 {DLF,HYF,IEF}
 W4 1326 HARD EIGHT 101D ET {DLF,HYF,IEF,MSUDF}
 43735397 HH MISS ADVANCE 9168W {DLF,HYF,IEF}

HH ADVANCE 7110T ET {DLF,HYF,IEF}
 EL MISS ADVANCE 017X {IEP}
 43068415 EL MISS ADVANCE 449R {IEP}

BW	WW	YW	Milk	M&G	YSC	REA	MARB	CHB
3.7	55	80	26	53	1.2	0.56	-0.02	106

BW: 70 Adj. WW: 587 Adj. YW: 1205

86 W4 392A MR BEEF H074
 DOB: 03/20/2020 Bull 44281297 Tattoo: H074

CL 1 DOMINO 0141 1ET {SOD}{DLF,HYF,IEF}
 DH DOMINO 392A {DLF,HYF,IEF,MSUDF}
 43459361 DH MISS ADVANCE 9156 {DLF,HYF,IEF,MSUDF}

L STAR PURE GOLD S089
 W4 S089 DOMINO Y588
 43314106 W4 4011 DOMET T097

BW	WW	YW	Milk	M&G	YSC	REA	MARB	CHB
2.9	57	95	30	59	1	0.45	-0.05	101

BW: 72 Adj. WW: 610 Adj. YW: 1240



87**W4 310 RIBEYE H081**

DOB: 03/05/2020 Bull 44281298 Tattoo: H081

NJW 98S R117 RIBEYE 88X ET {SOD}{CHB}{DLF,HYF,IEF,MSUDF,MDF}
BAR-S-SOF MR 88X 310 {DLF,HYF,IEF}
 43396221 BHF MISS KOOTER 602 {DLF,HYF,IEF}

GH ADAMS NORTHERN YANK ET 230U
B MISTY ROBIN 441B
 43620886 B LADY RIBSTONE 917

BW	WW	YW	Milk	M&G	YSC	REA	MARB	CHB
3.2	50	80	28	53	0.7	0.37	0.24	126

BW: 75 Adj. WW: 580 Adj. YW: 1176

88**W4 353 ADVANCE H091**

DOB: 03/05/2020 Bull 44281299 Tattoo: H091

HH ADVANCE 1098Y {DLF,HYF,IEF}
FS ADVANCE 353A {DLF,HYF,IEF}
 43444412 HH MISS ADVANCE 9068W ET {DLF,HYF,IEF}

CL 1 DOMINO 465P {DLF,HYF,IEF}
MISS DOMINO M127 {HYP}
 43264601 MISS DOMINO M902 {HYP}

BW	WW	YW	Milk	M&G	YSC	REA	MARB	CHB
3.3	48	72	26	50	1	0.23	-0.01	97

BW: 74 Adj. WW: 560 Adj. YW: 1155

89**W4 1600 SENSATION H094**

DOB: 03/07/2020 Bull 44281300 Tattoo: H094

CHURCHILL SENSATION 028X {SOD}{DLF,HYF,IEF,MDF}
KGB TFR KR SENSATION 028X 1600 {DLF,HYF,IEF,MDP}
 43772981 H LAYLA 3521 {MDP}

FS ADVANCE 1123Y {DLF,HYF,IEF}
W4 1123 DOMET B017 {IEP}
 43605036 W4 8203 DOMET Y605 {IEP}

BW	WW	YW	Milk	M&G	YSC	REA	MARB	CHB
2.5	55	83	35	62	1.1	0.32	0.18	116

BW: 65 Adj. WW: 610 Adj. YW: 1248

90**W4 353 ADVANCE H103**

DOB: 03/15/2020 Bull 44281301 Tattoo: H103

HH ADVANCE 1098Y {DLF,HYF,IEF}
FS ADVANCE 353A {DLF,HYF,IEF}
 43444412 HH MISS ADVANCE 9068W ET {DLF,HYF,IEF}

CL 1 DOMINO 955W {SOD}{CHB}{DLF,HYF,IEF}
W4 955W LADY C009 {DLF,HYF,IEF}
 43635709 CHURCHILL LADY 2100Z {DLF,HYF,IEF}

BW	WW	YW	Milk	M&G	YSC	REA	MARB	CHB
4.1	56	86	30	58	0.9	0.29	0.01	99

BW: 70 Adj. WW: 620 Adj. YW: 1258



Kenneth Gravelle, our feed and maintenance specialist.

**Lot 91****91****W4 338 DOMINO H116**

DOB: 03/21/2020 Bull 44281302 Tattoo: H116

CL 1 DOMINO 105Y {SOD}{DLF,HYF,IEF}
CL 1 DOMINO 338A {DLF,HYF,IEF}
 43379685 CL 1 DOMINETTE 1146Y {DLF,HYF,IEF}

JAL 1 DOMINO 1013Y {DLF,HYF,IEF}
DH L1 DOMINETTE 407 {HYP}
 43485045 DH L1 DOMINETTE 414 {HYP}

BW	WW	YW	Milk	M&G	YSC	REA	MARB	CHB
1.6	45	66	32	54	1.2	0.37	0.03	110

BW: 56 Adj. WW: 536 Adj. YW: 1145

92**W4 310 RIBEYE H122**

DOB: 03/29/2020 Bull 44281304 Tattoo: H122

NJW 98S R117 RIBEYE 88X ET {SOD}{CHB}{DLF,HYF,IEF,MSUDF,MDF}
BAR-S-SOF MR 88X 310 {DLF,HYF,IEF}
 43396221 BHF MISS KOOTER 602 {DLF,HYF,IEF}

B 72X DOMINO 50Z {DLF,HYF,IEF}
B DOMINETTE 567C
 43724357 B 5110 DOMINETTE 241Z

BW	WW	YW	Milk	M&G	YSC	REA	MARB	CHB
3	51	76	34	59	0.8	0.47	0.16	126

BW: 66 Adj. WW: 569 Adj. YW: 1168

**Lot 93****93****W4 392A MR BEEF H129**

DOB: 03/25/2020 Bull 44281307 Tattoo: H129

CL 1 DOMINO 0141 1ET {SOD}{DLF,HYF,IEF}
DH DOMINO 392A {DLF,HYF,IEF,MSUDF}
 43459361 DH MISS ADVANCE 9156 {DLF,HYF,IEF,MSUDF}

C MOLER 6213 ET {DLF,HYF,IEF}
W4 6213 DOMET Y683 {IEP}
 43314198 L STAR ADVANCE 026K M185 {IEP}

BW	WW	YW	Milk	M&G	YSC	REA	MARB	CHB
3.4	61	99	28	58	0.9	0.52	0.01	110

BW: 70 Adj. WW: 610 Adj. YW: 1230



Lot 94

94 W4 310 RIBEYE H173

DOB: 03/29/2020 Bull 44281309 Tattoo: H173

NJW 98S R117 RIBEYE 88X ET {SOD}{CHB}{DLF,HYF,IEF,MSUDF,MDF}
BAR-S-SOF MR 88X 310 {DLF,HYF,IEF}
 43396221 BHF MISS KOOTER 602 {DLF,HYF,IEF}

FS ADVANCE 353A {DLF,HYF,IEF}
W4 353 ADVANCE DOMET E613 {HYP}
 44059869 MISS L1 DOMINO M419 {HYP}

BW	WW	YW	Milk	M&G	YSC	REA	MARB	CHB
3.2	51	75	30	56	0.7	0.39	0.11	116

BW: 71 Adj. WW: 580 Adj. YW: 1170



Lot 95

95 W4V 310 RIBEYE H232

DOB: 05/01/2020 Bull 44281311 Tattoo: H232

NJW 98S R117 RIBEYE 88X ET {SOD}{CHB}{DLF,HYF,IEF,MSUDF,MDF}
BAR-S-SOF MR 88X 310 {DLF,HYF,IEF}
 43396221 BHF MISS KOOTER 602 {DLF,HYF,IEF}

CL 1 DOMINO 465P {DLF,HYF,IEF}
MISS DOMINO M204 {HYP}
 43338038 MISS DOMINO M814 {HYP}

BW	WW	YW	Milk	M&G	YSC	REA	MARB	CHB
3.4	50	76	29	54	0.7	0.42	0.09	116

BW: 73 Adj. WW: 620 Adj. YW: 1284

96 W4 310 RIBEYE H233

DOB: 05/01/2020 Bull 44281313 Tattoo: H233

NJW 98S R117 RIBEYE 88X ET {SOD}{CHB}{DLF,HYF,IEF,MSUDF,MDF}
BAR-S-SOF MR 88X 310 {DLF,HYF,IEF}
 43396221 BHF MISS KOOTER 602 {DLF,HYF,IEF}

B 295 DOMINO 6058
W4 6058 DOMET Y666
 43314181 B STAR LADY 557

BW	WW	YW	Milk	M&G	YSC	REA	MARB	CHB
3.7	51	77	29	55	0.7	0.35	0.13	114

BW: 65 Adj. WW: 560 Adj. YW: 1190



Lot 97

97 W4 MV E030 MR BEEF H400

DOB: 01/01/2020 Bull 44186518 Tattoo: H400

DH DOMINO 392A {DLF,HYF,IEF,MSUDF}
W4 392A MR BEEF E030 {DLF,HYF,IEF,MSUDF}
 43852398 W4 0387 DOMET B183

W4 S109 ADVANCE 502Y ET {DLF,HYF,IEF}
W4 502Y MS ADVANCE D704 {IEP}
 43948372 W4 612 DOMET U782 {IEP}

BW	WW	YW	Milk	M&G	YSC	REA	MARB	CHB
2.6	51	84	26	51	0.8	0.37	-0.02	100

BW: 70 Adj. WW: 695 Adj. YW: 1280



Lot 98

98 W4 MV E030 MR BEEF H402

DOB: 01/11/2020 Bull 44186520 Tattoo: H402

DH DOMINO 392A {DLF,HYF,IEF,MSUDF}
W4 392A MR BEEF E030 {DLF,HYF,IEF,MSUDF}
 43852398 W4 0387 DOMET B183

CL 1 DOMINO 338A {DLF,HYF,IEF}
W4 338A DOMET D656 {IEP}
 43948395 W4 6224 DOMET A640 {IEP}

BW	WW	YW	Milk	M&G	YSC	REA	MARB	CHB
2.5	50	84	35	60	1.3	0.44	0.03	110

BW: 65 Adj. WW: 632 Adj. YW: 1240



Thank you for your continued support of W4 Ranch!



*Scenes from our
Spring 2021 sale.*





Lot 99

99 W4 MV E030 MR BEEF H411
 DOB: 02/19/2020 Bull 44186575 Tattoo: H411

DH DOMINO 392A {DLF,HYF,IEF,MSUDF}
 W4 392A MR BEEF E030 {DLF,HYF,IEF,MSUDF}
 43852398 W4 0387 DOMET B183

HH ADVANCE 8203U ET {SOD}{DLF,IEF}
 W4 8203 MS ADVANCE D733 {HYP}
 43949479 MISS DOMINO M909 {HYP}

BW	WW	YW	Milk	M&G	YSC	REA	MARB	CHB
3.5	52	82	26	52	1.1	0.33	0.06	105

BW: 66 Adj. WW: 642 Adj. YW: 1260



Lot 100

100 W4 MV E030 MR BEEF H412
 DOB: 02/20/2020 Bull 44186576 Tattoo: H412

DH DOMINO 392A {DLF,HYF,IEF,MSUDF}
 W4 392A MR BEEF E030 {DLF,HYF,IEF,MSUDF}
 43852398 W4 0387 DOMET B183

DB 5216 DOM 0387 {DLF,HYF,IEF,MSUDF}
 W4 0387 DOMET D660 {DLP,HYP}
 44058806 W4 592 DOMET 110Y 2ET {DLP,HYP}

BW	WW	YW	Milk	M&G	YSC	REA	MARB	CHB
2.2	50	85	31	56	1.2	0.36	0.06	102

BW: 62 Adj. WW: 630 Adj. YW: 1274

101 W4 MV E030 MR BEEF H417
 DOB: 04/08/2020 Bull 44186579 Tattoo: H417

DH DOMINO 392A {DLF,HYF,IEF,MSUDF}
 W4 392A MR BEEF E030 {DLF,HYF,IEF,MSUDF}
 43852398 W4 0387 DOMET B183

DB 5216 DOM 0387 {DLF,HYF,IEF,MSUDF}
 W4 0387 DOMET D559
 44058805 W4 8203 DOMET 139Y ET

BW	WW	YW	Milk	M&G	YSC	REA	MARB	CHB
2.6	52	85	32	58	1.2	0.41	0.05	106

BW: 65 Adj. WW: 560 Adj. YW: 1189



***We want our bulls to deliver you
 pounds at weaning and
 dollars for your hard work.***



**Lots 102-137 - Fall Bred Heifers -
Bred To Hereford Or Angus Bulls**



Fall Breds



Fall Breds



Lot 107



Lot 113

102 W4 B080 DOMET G049

DOB: 02/10/2019 Cow 44282565 Tattoo: G049

W4 -S ADVANCE DOM W168 ET
W4 W168 DOMINO B080 {DLF,HYF,IEF,MSUDF}
 43520661 W4 4011 DOMET T127

HH ADVANCE 8203U ET {SOD,DLF,IEF}
W4 8203 DOMET 118Y 1ET {HYP}
 43211693 C IDA JO GOLD 5203 ET {HYP}

BW	WW	YW	Milk	M&G	YSC	REA	MARB	CHB
3.9	48	78	28	51	0.9	0.41	0.03	107

Pasture exposed to KGB TFR KR Sensation 028X 1600 1/5/21 to 4/1/21. Bred.

106 W4 3001 MISS ADVANCE G141

DOB: 03/29/2019 Cow 44282570 Tattoo: G141

HH ADVANCE 0002X {SOD,DLF,HYF,IEF,MSUDF,MDF}
FS ADVANCE 3001A ET {DLF,HYF,IEF}
 43418093 EL MISS ADVANCE 710T {DLF,HYF,IEF}

MCR L91 MARK DOMINO 522 ET {IEP}
W4 522 DOMET Y746 {IEP}
 43314263 W4 058 DOMET P204 {IEP}

BW	WW	YW	Milk	M&G	YSC	REA	MARB	CHB
3.3	52	87	28	54	1	0.25	0.06	106

Pasture exposed to KGB TFR KR Sensation 028X 1600 1/5/21 to 4/1/21. Bred.

103 W4 310 RIBEYE DOMET G088

DOB: 02/21/2019 Cow 44282567 Tattoo: G088

NJW 98S R117 RIBEYE 88X ET {SOD,CHB,DLF,HYF,IEF,MSUDF,MDF}
BAR-S-SOF MR 88X 310 {DLF,HYF,IEF}
 43396221 BHF MISS KOOTER 602 {DLF,HYF,IEF}

C 212 DOMINO 4011 ET {SOD,CHB,DLF,HYF,IEF}
W4 4011 DOMET Z048 {IEP}
 43414000 H LADY WILDFIRE 6123 {IEP}

BW	WW	YW	Milk	M&G	YSC	REA	MARB	CHB
2	48	74	27	51	0.7	0.45	0.16	123

Pasture exposed to KGB TFR KR Sensation 028X 1600 1/5/21 to 4/1/21. Bred.

107 W4 4312 MS BAILEE G160

DOB: 05/11/2019 Cow 44190478 Tattoo: G160

C MILES MCKEE 2103 ET {SOD,CHB,DLF,HYF,IEF,MSUDF,MDF}
C BAILEES MILES 4312 ET {DLF,HYF,IEF,MSUDF}
 43487323 BR BAILEE 1066 ET {DLF,HYF,IEF}

HH ADVANCE 221 ET {DLF,HYF,IEF}
H CCC MS 1068Y ADVANCE 4431 ET {DLF,HYF,IEF,MSUDF}
 43488270 HH MISS ADVANCE 1068Y ET {DLF,HYF,IEF}

BW	WW	YW	Milk	M&G	YSC	REA	MARB	CHB
3.4	55	87	31	59	0.6	0.52	0.05	113

AI'd to CL 1 Domino 7177E 12/22/20. Pasture exposed to KGB TFR KR Sensation 028X 1600 1/5/21 to 4/1/21. Bred.

104 W4 310 RIBEYE DOMET G115

DOB: 03/01/2019 Cow 44282568 Tattoo: G115

NJW 98S R117 RIBEYE 88X ET {SOD,CHB,DLF,HYF,IEF,MSUDF,MDF}
BAR-S-SOF MR 88X 310 {DLF,HYF,IEF}
 43396221 BHF MISS KOOTER 602 {DLF,HYF,IEF}

WR GAME DAY R019 {IEP}
W4 R019 DOMET U120 {IEP}
 42927471 W4 041 DOMET P242 {IEP}

BW	WW	YW	Milk	M&G	YSC	REA	MARB	CHB
3.5	47	73	28	52	0.6	0.41	0.13	117

Pasture exposed to KGB TFR KR Sensation 028X 1600 1/5/21 to 4/1/21. Bred.

108 W4 353 MS ADVANCE G162

DOB: 04/09/2019 Cow 44282572 Tattoo: G162

HH ADVANCE 1098Y {DLF,HYF,IEF}
FS ADVANCE 353A {DLF,HYF,IEF}
 43444412 HH MISS ADVANCE 9068W ET {DLF,HYF,IEF}

MCR L91 MARK DOMINO 522 ET {IEP}
W4 522 DOMET U240 {IEP}
 42927549 W4 DOMETTE N132

BW	WW	YW	Milk	M&G	YSC	REA	MARB	CHB
3.9	49	77	26	50	0.9	0.19	0.03	99

Pasture exposed to KGB TFR KR Sensation 028X 1600 1/5/21 to 4/1/21. Bred.

105 W4 407 ADVANCE DOMET G135

DOB: 03/25/2019 Cow 44282775 Tattoo: G135

HH ADVANCE 2125Z {DLF,HYF,IEF}
FS ADVANCE 407B {DLF,HYF,IEF}
 43466166 CL 1 DOMINETTE 057X {DLF,HYF,IEF}

C MOLER 6213 ET {DLF,HYF,IEF}
W4 6213 DOMET Y670 {IEP}
 43314185 W4 492 DOMET S144 {IEP}

BW	WW	YW	Milk	M&G	YSC	REA	MARB	CHB
3	47	69	26	50	0.7	0.25	0.08	105

Pasture exposed to KGB TFR KR Sensation 028X 1600 1/5/21 to 4/1/21. Bred.

109 W4 310 RIBEYE SOMET G163

DOB: 04/20/2019 Cow 44282776 Tattoo: G163

NJW 98S R117 RIBEYE 88X ET {SOD,CHB,DLF,HYF,IEF,MSUDF,MDF}
BAR-S-SOF MR 88X 310 {DLF,HYF,IEF}
 43396221 BHF MISS KOOTER 602 {DLF,HYF,IEF}

CL 1 DOMINO 465P {DLF,HYF,IEF}
MISS DOMINO M204 {HYP}
 43338038 MISS DOMINO M814 {HYP}

BW	WW	YW	Milk	M&G	YSC	REA	MARB	CHB
3.4	50	76	29	54	0.7	0.42	0.09	116

Pasture exposed to KGB TFR KR Sensation 028X 1600 1/5/21 to 4/1/21. Bred.

110 W4 353 ADANCETTE G174

DOB: 04/13/2019 Cow 44282777 Tattoo: G174

HH ADVANCE 1098Y {DLF,HYF,IEF}
FS ADVANCE 353A {DLF,HYF,IEF}
 43444412 HH MISS ADVANCE 9068W ET {DLF,HYF,IEF}

HH ADVANCE 041K 1ET {DLF,IEC}
W4 041 DOMET T514 {IEP}
 42919682 JAB 6103 DOMINETTE 185L {IEP}

BW	WW	YW	Milk	M&G	YSC	REA	MARB	CHB
3	42	61	22	43	1	0.15	0.05	97

Pasture exposed to KGB TFR KR Sensation 028X 1600 1/5/21 to 4/1/21. Bred.

114 W4 0387 DOM F083

DOB: 03/15/2018 Cow 44114235 Tattoo: F083

UPS DOMINO 5216 {SOD}{DLF,IEF}
DB 5216 DOM 0387 {DLF,HYF,IEF,MSUDF}
 43146486 DB MISS DOM 6005 {IEP}

W4 4011 DOMINO T154 {DLF,HYF,IEF}
W4 T154 LADY DOMET B076 {IEP}
 43508754 W4 4011 DOMET T147 {IEP}

BW	WW	YW	Milk	M&G	YSC	REA	MARB	CHB
3.6	50	89	26	51	1.2	0.48	0.09	113

Pasture exposed to Angus bulls 12/23/20 to 4/1/21. Bred.

111 W4 548C TOP LADY G179

DOB: 04/22/2019 Cow 44227484 Tattoo: G179

H/TSR/CHEZ/FULL THROTTLE ET {DLF,HYF,IEF}
CHURCHILL TOP SPEED 548C ET {DLF,HYF,IEF,MSUDF}
 43586918 CHURCHILL LADY 002X ET {DLF,HYF,IEF,MSUDF,MDF}

B EXCEL 20 ET {DLF,HYF,IEF}
B LADY EXCEL 570C {IEP}
 43724390 B LADY EXCEL 517 {IEP}

BW	WW	YW	Milk	M&G	YSC	REA	MARB	CHB
3	46	79	22	45	0.7	0.27	0.03	105

AI'd to JCS 240 Flintlock 5815 12/22/20. Pasture exposed to KGB TFR KR Sensation 028X 1/5/21 to 4/1/21. Bred.

115 W4 407 LADY ADVANCE G148

DOB: 04/28/2019 Cow 44227373 Tattoo: G148

HH ADVANCE 2125Z {DLF,HYF,IEF}
FS ADVANCE 407B {DLF,HYF,IEF}
 43466166 CL 1 DOMINETTE 057X {DLF,HYF,IEF}

B 295 DOMINO 6058
W4 6058 DOMET Z608 {IEP}
 43491734 B CHURCHLADY 770 {IEP}

BW	WW	YW	Milk	M&G	YSC	REA	MARB	CHB
2.6	45	66	26	49	0.9	0.14	0.07	97

Pasture exposed to Angus bulls 12/23/20 to 4/1/21. Bred.

112 W4 310 LADY RIBEYE G181

DOB: 04/25/2019 Cow 44282778 Tattoo: G181

NJW 98S R117 RIBEYE 88X ET {SOD}{CHB}{DLF,HYF,IEF,MSUDF,MDF}
BAR-S-SOF MR 88X 310 {DLF,HYF,IEF}
 43396221 BHF MISS KOOTER 602 {DLF,HYF,IEF}

CHURCHILL NEON 7128T ET {IEP}
CHURCHILL LADY 949 {IEP}
 42992902 CHURCHILL LADY 447 {IEP}

BW	WW	YW	Milk	M&G	YSC	REA	MARB	CHB
3.1	50	79	28	53	0.7	0.45	0.15	128

Pasture exposed to KGB TFR KR Sensation 028X 1600 1/5/21 to 4/1/21. Bred.

116 W4 0387 DOMET G167

DOB: 04/09/2019 Cow 44227378 Tattoo: G167

UPS DOMINO 5216 {SOD}{DLF,IEF}
DB 5216 DOM 0387 {DLF,HYF,IEF,MSUDF}
 43146486 DB MISS DOM 6005 {IEP}

W4 613 DOMINO W219
W4 W219 BANKER C109 {DLP,HYP}
 43764563 W4 188 DOMINETE R054 {DLP,HYP}

BW	WW	YW	Milk	M&G	YSC	REA	MARB	CHB
3.6	48	87	27	51	1.1	0.38	0.07	110

Pasture exposed to Angus bulls 12/23/20 to 4/1/21. Bred.

113 W4 353 MISS ADVANCE G187

DOB: 04/30/2019 Cow 44227486 Tattoo: G187

HH ADVANCE 1098Y {DLF,HYF,IEF}
FS ADVANCE 353A {DLF,HYF,IEF}
 43444412 HH MISS ADVANCE 9068W ET {DLF,HYF,IEF}

FS ADVANCE 1123Y {DLF,HYF,IEF}
W4 1123 DOMET B008
 43605030 W4 4011 DOMET Y507

BW	WW	YW	Milk	M&G	YSC	REA	MARB	CHB
4	53	80	29	55	0.9	0.3	0.02	106

AI'd to KGB TFR KR Sensation 028X 1600 12/22/20. Pasture exposed to KGB TFR KR Sensation 028X 1/5/21 to 4/1/21. Bred.

117 W4 338 DOMET G199

DOB: 05/04/2019 Cow 44227383 Tattoo: G199

CL 1 DOMINO 105Y {SOD}{DLF,HYF,IEF}
CL 1 DOMINO 338A {DLF,HYF,IEF}
 43379685 CL 1 DOMINETTE 1146Y {DLF,HYF,IEF}

W4 592 DOMINO 102Y ET {DLF,HYF,IEF,MSUDF}
W4 102Y DOMET A017 {IEP}
 43519821 W4 522 DOMET W686 {IEP}

BW	WW	YW	Milk	M&G	YSC	REA	MARB	CHB
3.6	53	83	34	60	1.2	0.43	0.05	111

Pasture exposed to Angus bulls 12/23/20 to 4/1/21. Bred.

118 W4 B080 DOMET G206

DOB: 05/21/2019 Cow 44227388 Tattoo: G206

W4 -S ADVANCE DOM W168 ET
W4 W168 DOMINO B080 {DLF,HYF,IEF,MSUDF}
 43520661 W4 4011 DOMET T127

DOMINO M 027 {HYP}
MISS DOMINO M223Z {HYP}
 43338030 MISS DOMINO M029 {DLF,HYF,IEF}

BW	WW	YW	Milk	M&G	YSC	REA	MARB	CHB
3.2	44	77	24	46	0.8	0.31	-0.02	95

Pasture exposed to Angus bulls 12/23/20 to 4/1/21. Bred.

122 W4 392A DOMET G541

DOB: 09/18/2019 Cow 44227330 Tattoo: G541

CL 1 DOMINO 0141 1ET {SOD}{DLF,HYF,IEF}
DH DOMINO 392A {DLF,HYF,IEF,MSUDF}
 43459361 DH MISS ADVANCE 9156 {DLF,HYF,IEF,MSUDF}

H HVR DOMINO 870 ET {HYP}
W4 870 DOMET Y541 {HYP,IEP}
 43314060 W4 6025 DOMET U659 {IEP}

BW	WW	YW	Milk	M&G	YSC	REA	MARB	CHB
3.4	59	99	28	58	0.8	0.48	-0.03	107

Pasture exposed to Angus bulls 12/23/20 to 4/1/21. Bred.

119 W4 407 LADY ADVANCE G501

DOB: 09/25/2019 Cow 44227320 Tattoo: G501

HH ADVANCE 2125Z {DLF,HYF,IEF}
FS ADVANCE 407B {DLF,HYF,IEF}
 43466166 CL 1 DOMINETTE 057X {DLF,HYF,IEF}

B EXCEL 20 ET {DLF,HYF,IEF}
B LADY EXCELL 549C {IEP}
 43722940 B BALLERINA 915 {IEP}

BW	WW	YW	Milk	M&G	YSC	REA	MARB	CHB
3.7	48	76	29	53	0.9	0.18	0.06	99

Pasture exposed to Angus bulls 12/23/20 to 4/1/21. Bred.

123 W4 7195 DOMET G554

DOB: 10/01/2019 Cow 44227331 Tattoo: G554

CL 1 DOMINO 215Z {CHB}{DLF,HYF,IEF,MSUDF,MDF}
CL 1 DOMINO 7195E {CHB}{DLF,HYF,IEF,MSUDF}
 43800290 CL 1 DOMINETTE 351A {DOD}{DLF,HYF,IEF}

W4 -S ADVANCE DOM W168 ET
W4 W168 DOMET B041 {IEP}
 43520645 W4 6033 DOMET U679 {IEP}

BW	WW	YW	Milk	M&G	YSC	REA	MARB	CHB
2.5	56	91	24	52	1	0.41	0.13	131

Pasture exposed to Angus bulls 12/23/20 to 4/1/21. Bred.

120 W4 B080 DOMET G522

DOB: 09/22/2019 Cow 44227325 Tattoo: G522

W4 -S ADVANCE DOM W168 ET
W4 W168 DOMINO B080 {DLF,HYF,IEF,MSUDF}
 43520661 W4 4011 DOMET T127

LBH 157K RIBSTONE ET 19T {DLF,HYF,IEF}
B LADY RIBSTONE 406B {HYP}
 43620831 B LADY GOLD 205Z {HYP}

BW	WW	YW	Milk	M&G	YSC	REA	MARB	CHB
4.8	53	90	30	56	0.9	0.42	-0.01	98

Pasture exposed to Angus bulls 12/23/20 to 4/1/21. Bred.

124 W4 B080 DOMET G574

DOB: 10/10/2019 Cow 44227336 Tattoo: G574

W4 -S ADVANCE DOM W168 ET
W4 W168 DOMINO B080 {DLF,HYF,IEF,MSUDF}
 43520661 W4 4011 DOMET T127

MCR L91 MARK DOMINO 522 ET {IEP}
W4 522 DOMET W685 {IEP}
 43119645 B 9213 DOMINETTE 611 {IEP}

BW	WW	YW	Milk	M&G	YSC	REA	MARB	CHB
3.8	48	85	27	51	0.8	0.32	-0.01	96

Pasture exposed to Angus bulls 12/23/20 to 4/1/21. Bred.

121 W4 7195 DOMET G534

DOB: 09/25/2019 Cow 44227328 Tattoo: G534

CL 1 DOMINO 215Z {CHB}{DLF,HYF,IEF,MSUDF,MDF}
CL 1 DOMINO 7195E {CHB}{DLF,HYF,IEF,MSUDF}
 43800290 CL 1 DOMINETTE 351A {DOD}{DLF,HYF,IEF}

CL 1 DOMINO 314A {DLF,HYF,IEF}
B PI LADY 503C
 43634549 B MISS AURUM MAGNUM

BW	WW	YW	Milk	M&G	YSC	REA	MARB	CHB
2.3	57	95	25	54	1.2	0.32	0.21	134

Pasture exposed to Angus bulls 12/23/20 to 4/1/21. Bred.

125 W4 392A DOMET G582

DOB: 10/10/2019 Cow 44227341 Tattoo: G582

CL 1 DOMINO 0141 1ET {SOD}{DLF,HYF,IEF}
DH DOMINO 392A {DLF,HYF,IEF,MSUDF}
 43459361 DH MISS ADVANCE 9156 {DLF,HYF,IEF,MSUDF}

HH ADVANCE 8203U ET {SOD}{DLF,IEF}
W4 8203 DOMET 144Y 4ET
 43211702 RCR AURUM MARY 02086

BW	WW	YW	Milk	M&G	YSC	REA	MARB	CHB
4	60	97	27	57	1.1	0.44	0.02	108

Pasture exposed to Angus bulls 12/23/20 to 4/1/21. Bred.

126 W4 310 LADY RIBEYE G591

DOB: 10/25/2019 Cow 44227349 Tattoo: G591

NJW 98S R117 RIBEYE 88X ET {SOD}{CHB}{DLF,HYF,IEF,MSUDF,MDF}
BAR-S-SOF MR 88X 310 {DLF,HYF,IEF}

43396221 BHF MISS KOOTER 602 {DLF,HYF,IEF}

HH ADVANCE 2037Z ET {DLF,HYF,IEF}

FS MISS ADVANCE 402B {DLF,HYF,IEF}

43549992 CL 1 DOMINETTE 203Z {DLF,HYF,IEF}

BW	WW	YW	Milk	M&G	YSC	REA	MARB	CHB
3.6	51	82	28	53	0.4	0.36	0.13	116

Pasture exposed to Angus bulls 12/23/20 to 4/1/21. Bred.

130 W4 392A DOMET G624

DOB: 10/01/2019 Cow 44227360 Tattoo: G624

CL 1 DOMINO 0141 1ET {SOD}{DLF,HYF,IEF}
DH DOMINO 392A {DLF,HYF,IEF,MSUDF}

43459361 DH MISS ADVANCE 9156 {DLF,HYF,IEF,MSUDF}

C PURE GOLD 6224 ET

W4 6224 DOMET X080

43165778 W4 LADY LERCH B228

BW	WW	YW	Milk	M&G	YSC	REA	MARB	CHB
2.6	53	93	29	56	1	0.44	0.03	108

Pasture exposed to Angus bulls 12/23/20 to 4/1/21. Bred.

127 W4 310 LADY RIBEYE G595

DOB: 11/01/2019 Cow 44227351 Tattoo: G595

NJW 98S R117 RIBEYE 88X ET {SOD}{CHB}{DLF,HYF,IEF,MSUDF,MDF}
BAR-S-SOF MR 88X 310 {DLF,HYF,IEF}

43396221 BHF MISS KOOTER 602 {DLF,HYF,IEF}

W4 4011 DOMINO S025 {DLF,IEF}

W4 S025 DOMET X520 {DLP,HYP}

43211802 NH MISS COCO CHANEL R1106 ET {DLP,HYP}

BW	WW	YW	Milk	M&G	YSC	REA	MARB	CHB
3.2	48	71	30	54	0.6	0.57	0.08	119

Pasture exposed to Angus bulls 12/23/20 to 4/1/21. Bred.

131 W4 338 DOMET G639

DOB: 09/01/2019 Cow 44227362 Tattoo: G639

CL 1 DOMINO 105Y {SOD}{DLF,HYF,IEF}
CL 1 DOMINO 338A {DLF,HYF,IEF}

43379685 CL 1 DOMINETTE 1146Y {DLF,HYF,IEF}

CL 1 DOMINO 338A {DLF,HYF,IEF}

MISS DOMINO M529 {HYP}

43597523 MISS DOMINO M432 {HYP}

BW	WW	YW	Milk	M&G	YSC	REA	MARB	CHB
3	44	68	39	61	1.3	0.42	0	108

Pasture exposed to Angus bulls 12/23/20 to 4/1/21. Bred.

128 W4 310 LADY RIBEYE G596

DOB: 11/10/2019 Cow 44227353 Tattoo: G596

NJW 98S R117 RIBEYE 88X ET {SOD}{CHB}{DLF,HYF,IEF,MSUDF,MDF}
BAR-S-SOF MR 88X 310 {DLF,HYF,IEF}

43396221 BHF MISS KOOTER 602 {DLF,HYF,IEF}

C PURE GOLD 6224 ET

W4 6224 DOMET A640 {IEP}

43517184 W4 058 DOMET N518 {IEP}

BW	WW	YW	Milk	M&G	YSC	REA	MARB	CHB
4.6	52	85	29	55	0.8	0.42	0.16	124

Pasture exposed to Angus bulls 12/23/20 to 4/1/21. Bred.

132 W4 353 LADY ADVANCE G674

DOB: 11/01/2019 Cow 44227365 Tattoo: G674

HH ADVANCE 1098Y {DLF,HYF,IEF}
FS ADVANCE 353A {DLF,HYF,IEF}

43444412 HH MISS ADVANCE 9068W ET {DLF,HYF,IEF}

CL 1 DOMINO 555R {SOD}{DLF,IEF}

B&B L1 DOMINETTE 3167

43445103 B&B L1 DOMINET 962

BW	WW	YW	Milk	M&G	YSC	REA	MARB	CHB
2.7	48	75	27	51	1.1	0.17	-0.03	89

Pasture exposed to Angus bulls 12/23/20 to 4/1/21. Bred.

129 W4 0387 DOMET G617

DOB: 11/02/2019 Cow 44227359 Tattoo: G617

UPS DOMINO 5216 {SOD}{DLF,IEF}
DB 5216 DOM 0387 {DLF,HYF,IEF,MSUDF}

43146486 DB MISS DOM 6005 {IEP}

CL 1 DOMINO 052X 1ET {DLF,HYF,IEF}

B DOMINETTE 449B

43620898 B LADY RIBSTONE 150Y

BW	WW	YW	Milk	M&G	YSC	REA	MARB	CHB
3.5	51	86	31	56	1.3	0.41	0.1	109

Pasture exposed to Angus bulls 12/23/20 to 4/1/21. Bred.

133 2C W4 SPRING CREEK

DOB: 08/24/2019 Cow 44235070 Tattoo: G003

HH ADVANCE 8203U ET {SOD,DLF,IEF}
W4 392A MR BEEF D557 {DLF,HYF,IEF,MSUDF}

43924628 W4 955 MAGGIE 134Y ET {DLF,HYF,IEF}

W4 613 ACHIEVER U006 {DLF,IEF}

SPRING CREEK D03 {HYP,IEP}

43866115 W4 4011 DOMET T131 {HYP,IEP}

BW	WW	YW	Milk	M&G	YSC	REA	MARB	CHB
4.8	55	94	23	50	1.3	0.55	0.09	132

Pasture exposed to Angus bulls 12/23/20 to 4/1/21. Bred.

134 SPRING CREEK G10

DOB: 08/13/2019 Cow 44283429 Tattoo: G10

DH DOMINO 109Y {DLF,HYF,IEF}
W4 109Y DOMINO D718 {DLF,HYF,IEF,MSUDF}
 43931167 DH MS ADVANCE 3192

C NOTICE ME MAXIUM 1206 ET {DLF,HYF,IEF}
GKB MISS ADVANCE B022 236C
 43683264 GKB 8172 MISS ADVANCE B022 ET

BW	WW	YW	Milk	M&G	YSC	REA	MARB	CHB
4.7	54	84	27	53	0.9	0.48	-0.15	98

Pasture exposed to Angus bulls 12/23/20 to 4/1/21. Bred.

136 SPRING CREEK G12

DOB: 08/14/2019 Cow 44265488 Tattoo: G12

DH DOMINO 109Y {DLF,HYF,IEF}
W4 109Y DOMINO D718 {DLF,HYF,IEF,MSUDF}
 43931167 DH MS ADVANCE 3192

CHAC MASON 2214 {DLF,HYF,IEF}
GKB 2214 NOTICE ME B059 193C
 P43683237 GKB 860 NOTICE ME TOO B059 ET

BW	WW	YW	Milk	M&G	YSC	REA	MARB	CHB
5.3	57	92	29	57	0.9	0.51	-0.17	96

Pasture exposed to Angus bulls 12/23/20 to 4/1/21. Bred.

135 SPRING CREEK G11

DOB: 08/13/2019 Cow 44265487 Tattoo: G11

DH DOMINO 109Y {DLF,HYF,IEF}
W4 109Y DOMINO D718 {DLF,HYF,IEF,MSUDF}
 43931167 DH MS ADVANCE 3192

BR CURRENCY 2155 ET {DLF,HYF,IEF,MSUDF}
GKB 2155 BREEZE 553Z 197C
 43695204 PRCC GKB 88X BREEZE 553Z ET {DLF,HYF,IEF}

BW	WW	YW	Milk	M&G	YSC	REA	MARB	CHB
4.6	59	93	30	60	0.9	0.54	0.04	114

Pasture exposed to Angus bulls 12/23/20 to 4/1/21. Bred.

137 SPRING CREEK G13

DOB: 08/15/2019 Cow 44265489 Tattoo: G13

DH DOMINO 109Y {DLF,HYF,IEF}
W4 109Y DOMINO D718 {DLF,HYF,IEF,MSUDF}
 43931167 DH MS ADVANCE 3192

C NOTICE ME MAXIUM 1206 ET {DLF,HYF,IEF}
GKB 1206 MISS EDEE 163C
 43683216 GKB 146 MISS EDEE B08 ET

BW	WW	YW	Milk	M&G	YSC	REA	MARB	CHB
4.7	53	84	27	53	0.9	0.46	-0.13	97

Pasture exposed to Angus bulls 12/23/20 to 4/1/21. Bred.



KA-CHING.

MORE POUNDS. MORE CALVES. MORE PROFIT.

Hereford bulls increase net profit by \$51 per cow per year.

That's \$20,000 in additional revenue for a typical 400-cow outfit, thanks to increased fertility and herd size.

Herefords are also the efficiency experts, proven to add value to calves in the feedyard — \$30 per head in profitability.

That's real money and real results.

COME HOME TO HEREFORD.



Hereford.org | 816-842-3757



Lots 138-183 - Spring Bred Heifers - Bred To Hereford Bulls

138 W4 B080 LADY DOMET G138

DOB: 03/26/2019 Cow 44282569 Tattoo: G138

W4 -S ADVANCE DOM W168 ET
W4 W168 DOMINO B080 {DLF,HYF,IEF,MSUDF}
 43520661 W4 4011 DOMET T127

CHURCHILL RANCHER 592R {SOD}{CHB}{DLF,IEF}
CHURCHILL LADY 767T
 42790870 CHURCHILL LADY 3145 ET {DLF,IEF}

BW	WW	YW	Milk	M&G	YSC	REA	MARB	CHB
3.7	49	86	26	50	0.9	0.34	0.04	104

Pasture exposed to Churchill Rough Rider 9469G 4/20/21 to 8/2/31. Bred.

140 W4 407 LADY ADVANCE G190

DOB: 05/04/2019 Cow 44227380 Tattoo: G190

HH ADVANCE 2125Z {DLF,HYF,IEF}
FS ADVANCE 407B {DLF,HYF,IEF}
 43466166 CL 1 DOMINETTE 057X {DLF,HYF,IEF}

HH ADVANCE 6001S
KB L1 DOMINETTE 216Z {IEP}
 43274329 KB L1 DOMINETTE 071X {IEP}

BW	WW	YW	Milk	M&G	YSC	REA	MARB	CHB
3.2	45	63	26	49	0.9	0.18	0.07	105

Pasture exposed to Churchill Rough Rider 9469G 4/20/21 to 8/2/31. Bred.

139 W4 353 MS ADVANCE G142

DOB: 03/29/2019 Cow 44282571 Tattoo: G142

HH ADVANCE 1098Y {DLF,HYF,IEF}
FS ADVANCE 353A {DLF,HYF,IEF}
 43444412 HH MISS ADVANCE 9068W ET {DLF,HYF,IEF}

CHURCHILL RANCHER 592R {SOD,CHB,DLF,IEF}
W4 592 DOMET Y608 {DLP}
 43314126 H LADY GAME DAY 624 ET {DLP}

BW	WW	YW	Milk	M&G	YSC	REA	MARB	CHB
3.2	52	77	27	53	0.9	0.28	0.05	103

Pasture exposed to Churchill Rough Rider 9469G 4/20/21 to 8/2/31. Bred.

141 W4 4312 BAILEE G205

DOB: 05/01/2019 Cow 44227387 Tattoo: G205

C MILES MCKEE 2103 ET {SOD}{CHB}{DLF,HYF,IEF,MSUDF,MDF}
C BAILEES MILES 4312 ET {DLF,HYF,IEF,MSUDF}
 43487323 BR BAILEE 1066 ET {DLF,HYF,IEF}

W4 592 DOMINO 102Y ET {DLF,HYF,IEF,MSUDF}
W4 102Y MS ADVANCE C079
 43765297 W4 8203 ADVANCE 501Y ET

BW	WW	YW	Milk	M&G	YSC	REA	MARB	CHB
4.3	58	92	26	55	0.8	0.44	0.18	121

Pasture exposed to Churchill Rough Rider 9469G 4/20/21 to 8/2/31. Bred.

142 W4 0387 DOMET G558

DOB: 09/30/2019 Cow 44227332 Tattoo: G558

UPS DOMINO 5216 {SOD}{DLF,IEF}
DB 5216 DOM 0387 {DLF,HYF,IEF,MSUDF}
 43146486 DB MISS DOM 6005 {IEP}

CHURCHILL RANCHER 592R {SOD}{CHB}{DLF,IEF}
W4 592 DOMET 110Y 2ET {DLP,HYP}
 43212095 BR 74 ALAINNA 3113 {DLP,HYP}

BW	WW	YW	Milk	M&G	YSC	REA	MARB	CHB
3.9	53	90	27	54	1.2	0.34	0.11	104

Pasture exposed to Churchill Rough Rider 9469G 4/20/21 to 8/2/31. Bred.

146 W4 310 LADY RIBEYE G598

DOB: 10/08/2019 Cow 44227354 Tattoo: G598

NJW 98S R117 RIBEYE 88X ET {SOD}{CHB}{DLF,HYF,IEF,MSUDF,MDF}
BAR-S-SOF MR 88X 310 {DLF,HYF,IEF}
 43396221 BHF MISS KOOTER 602 {DLF,HYF,IEF}

GH ADAMS NORTHERN YANK ET 230U
B MISTY ROBIN 268Z
 43291803 B KATE 832

BW	WW	YW	Milk	M&G	YSC	REA	MARB	CHB
2.6	50	82	30	55	0.6	0.39	0.27	130

Pasture exposed to Churchill Rough Rider 9469G 4/20/21 to 8/2/31. Bred.

143 W4 548C TOP LADY G563

DOB: 10/02/2019 Cow 44227333 Tattoo: G563

H/TSR/CHEZ/FULL THROTTLE ET {DLF,HYF,IEF}
CHURCHILL TOP SPEED 548C ET {DLF,HYF,IEF,MSUDF}
 43586918 CHURCHILL LADY 002X ET {DLF,HYF,IEF,MSUDF,MDF}

D DOMINATOR 25Z {DLF,HYF,IEF}
B LADY GOLD 448B
 43622717 B 5110 DOMINETTE 299Z {DOD}

BW	WW	YW	Milk	M&G	YSC	REA	MARB	CHB
2.2	46	71	25	48	0.7	0.4	0.02	111

Pasture exposed to Churchill Rough Rider 9469G 4/20/21 to 8/2/31. Bred.

147 W4 4312 BAILEE G609

DOB: 10/05/2019 Cow 44227358 Tattoo: G609

C MILES MCKEE 2103 ET {SOD}{CHB}{DLF,HYF,IEF,MSUDF,MDF}
C BAILEES MILES 4312 ET {DLF,HYF,IEF,MSUDF}
 43487323 BR BAILEE 1066 ET {DLF,HYF,IEF}

CL 1 DOMINO 697S {DLF,HYF,IEF}
MISS DOMINO M320 {IEP}
 43417356 MISS DOMINO M104 {IEP}

BW	WW	YW	Milk	M&G	YSC	REA	MARB	CHB
4	56	89	25	53	0.8	0.47	0.11	116

Pasture exposed to Churchill Rough Rider 9469G 4/20/21 to 8/2/31. Bred.

144 W4 392A DOMET G580

DOB: 10/12/2019 Cow 44227339 Tattoo: G580

CL 1 DOMINO 0141 1ET {SOD}{DLF,HYF,IEF}
DH DOMINO 392A {DLF,HYF,IEF,MSUDF}
 43459361 DH MISS ADVANCE 9156 {DLF,HYF,IEF,MSUDF}

CL 1 DOMINO 465P {DLF,HYF,IEF}
MISS L1 DOMINO M419 {HYP}
 43514145 MISS DOMINO M208Z {HYP}

BW	WW	YW	Milk	M&G	YSC	REA	MARB	CHB
3.1	58	96	28	57	1	0.42	-0.05	99

Pasture exposed to Churchill Rough Rider 9469G 4/20/21 to 8/2/31. Bred.

148 W4 4312 BAILEE G667

DOB: 11/15/2019 Cow 44227363 Tattoo: G667

C MILES MCKEE 2103 ET {SOD}{CHB}{DLF,HYF,IEF,MSUDF,MDF}
C BAILEES MILES 4312 ET {DLF,HYF,IEF,MSUDF}
 43487323 BR BAILEE 1066 ET {DLF,HYF,IEF}

CL 1 DOMINO 193Y 1ET {DLF,HYF,IEF}
MISS DOMINO M407B {HYP}
 43514128 MISS DOMINO M909 {HYP}

BW	WW	YW	Milk	M&G	YSC	REA	MARB	CHB
3.9	52	85	29	55	0.8	0.4	0.1	115

Pasture exposed to Churchill Rough Rider 9469G 4/20/21 to 8/2/31. Bred.

145 W4 310 LADY RIBEYE G593

DOB: 10/18/2019 Cow 44227350 Tattoo: G593

NJW 98S R117 RIBEYE 88X ET {SOD}{CHB}{DLF,HYF,IEF,MSUDF,MDF}
BAR-S-SOF MR 88X 310 {DLF,HYF,IEF}
 43396221 BHF MISS KOOTER 602 {DLF,HYF,IEF}

H BANKER 613 ET {DLF,HYF,IEF}
W4 613 DOMET Y502 {IEP}
 43314027 W4 4011 DOMET T219 {IEP}

BW	WW	YW	Milk	M&G	YSC	REA	MARB	CHB
2.9	48	81	29	53	0.6	0.5	0.2	136

Pasture exposed to Churchill Rough Rider 9469G 4/20/21 to 8/2/31. Bred.

149 W4 102Y LADY RANCHER G672

DOB: 11/01/2019 Cow 44227364 Tattoo: G672

CHURCHILL RANCHER 592R {SOD}{CHB}{DLF,IEF}
W4 592 DOMINO 102Y ET {DLF,HYF,IEF,MSUDF}
 43212083 BR 74 ALAINNA 3113 {DLP,HYP}

UPS DOMINO 3027 {SOD}{CHB}{DLF,HYF,IEF,MSUDF,MDF}
CHURCHILL LADY 0105X {DLF,HYF,IEF}
 43085248 CHURCHILL LADY 8207U {IEP}

BW	WW	YW	Milk	M&G	YSC	REA	MARB	CHB
4.6	50	83	25	50	0.6	0.22	0.24	119

Pasture exposed to Churchill Rough Rider 9469G 4/20/21 to 8/2/31. Bred.

150 W4 392A DIVA G685
 DOB: 11/30/2019 Cow 44282137 Tattoo: G685

CL 1 DOMINO 0141 1ET {SOD}{DLF,HYF,IEF}
DH DOMINO 392A {DLF,HYF,IEF,MSUDF}
 43459361 DH MISS ADVANCE 9156 {DLF,HYF,IEF,MSUDF}

GOLDEN OAK OUTCROSS 18U {SOD}{DLF,HYF,IEF,MSUDF}
W4 OUTCROSS DIVA 104Z ET
 P43337642 C MS PURE GOLD 5007 ET {DLF,HYF,IEF}

BW	WW	YW	Milk	M&G	YSC	REA	MARB	CHB
3.7	63	105	31	62	1.1	0.59	-0.05	108

Pasture exposed to Churchill Rough Rider 9469G 4/20/21 to 8/2/31. Bred.

154 W4 548C TOP LADY G507
 DOB: 09/11/2019 Cow 44227174 Tattoo: G507

H/TSR/CHEZ/FULL THROTTLE ET {DLF,HYF,IEF}
CHURCHILL TOP SPEED 548C ET {DLF,HYF,IEF,MSUDF}
 43586918 CHURCHILL LADY 002X ET {DLF,HYF,IEF,MSUDF,MDF}

RCR L1 AURUM DOMINO 08120 {DLF,HYF,IEF}
B LADY AURUM 491B
 43589959 B AMERICAN HONEY 12X

BW	WW	YW	Milk	M&G	YSC	REA	MARB	CHB
2.9	48	79	21	45	0.7	0.36	0.02	107

Pasture exposed to W4 Nightcap G025 4/22/21 to 8/2/21. Bred.

151 W4 858F LADY H005
 DOB: 01/27/2020 Cow 44282139 Tattoo: H005

SHF YORK 19H Y02 {SOD}{CHB}{DLF,HYF,IEF}
CHURCHILL BROADWAY 858F {CHB}{DLF,HYF,IEF,MSUDF}
 P43919937 CHURCHILL LADY 640D {DLF,HYF,IEF}

CHURCHILL KICKSTART 501C ET {DLF,HYF,IEF,MSUDF,MDF}
CHURCHILL LADY 8122F
 P44000160 CHURCHILL LADY 6230D ET {DLF,HYF,IEF,MSUDF}

BW	WW	YW	Milk	M&G	YSC	REA	MARB	CHB
1.9	62	103	26	57	1.4	0.5	0.22	135

Pasture exposed to Churchill Rough Rider 9469G 4/20/21 to 8/2/31. Bred.

155 W4 B080 DOMET G527
 DOB: 09/25/2019 Cow 44227175 Tattoo: G527

W4 -S ADVANCE DOM W168 ET
W4 W168 DOMINO B080 {DLF,HYF,IEF,MSUDF}
 43520661 W4 4011 DOMET T127

HH ADVANCE 8203U ET {SOD}{DLF,IEF}
W4 8203 DOMET A041
 43513583 AMH MISS 2998 281 {DLF,IEF}

BW	WW	YW	Milk	M&G	YSC	REA	MARB	CHB
4.2	48	82	24	48	0.9	0.34	0.01	100

Pasture exposed to W4 Nightcap G025 4/22/21 to 8/2/21. Bred.

152 W4 0387 DOMET G166
 DOB: 04/20/2019 Cow 44227375 Tattoo: G166

UPS DOMINO 5216 {SOD}{DLF,IEF}
DB 5216 DOM 0387 {DLF,HYF,IEF,MSUDF}
 43146486 DB MISS DOM 6005 {IEP}

CHURCHILL MVP 188 {SOD}{DLF,HYF,IEF}
W4 188 DOMET S599
 42820351 K74 9005 DOMET 1051

BW	WW	YW	Milk	M&G	YSC	REA	MARB	CHB
5.1	54	89	26	53	1.1	0.34	-0.01	96

Pasture exposed to W4 Nightcap G025 4/22/21 to 8/2/21. Bred.

156 W4 106D DOMET G535
 DOB: 09/28/2019 Cow 44227181 Tattoo: G535

C 10Y HOMETOWN 4108 {DLF,HYF,IEF,MDP}
W4 4108 HOMETOWN 106D ET {DLF,HYF,IEF,MSUDF,MDF}
 43742956 HH MISS ADVANCE 9168W {DLF,HYF,IEF}

W4 955 DOMINO 136Y 2ET {DLF,HYF,IEF,MSUDF}
W4 136Y DOMINO D711 {IEP}
 43945683 W4 R019 DOMET U120 {IEP}

BW	WW	YW	Milk	M&G	YSC	REA	MARB	CHB
3.6	57	89	28	56	1.1	0.45	0.12	113

Pasture exposed to W4 Nightcap G025 4/22/21 to 8/2/21. Bred.

153 W4 548C TOP LADY G506
 DOB: 09/11/2019 Cow 44227173 Tattoo: G506

H/TSR/CHEZ/FULL THROTTLE ET {DLF,HYF,IEF}
CHURCHILL TOP SPEED 548C ET {DLF,HYF,IEF,MSUDF}
 43586918 CHURCHILL LADY 002X ET {DLF,HYF,IEF,MSUDF,MDF}

CL 1 DOMINO 072X {DLF,HYF,IEF}
B MISS 72X DOMINETTE 459B
 43497824 B MISTY ROBIN 102Y

BW	WW	YW	Milk	M&G	YSC	REA	MARB	CHB
1.6	46	72	25	48	0.8	0.38	0.11	120

Pasture exposed to W4 Nightcap G025 4/22/21 to 8/2/21. Bred.

157 W4 106D DOMET G538
 DOB: 09/30/2019 Cow 44227184 Tattoo: G538

C 10Y HOMETOWN 4108 {DLF,HYF,IEF,MDP}
W4 4108 HOMETOWN 106D ET {DLF,HYF,IEF,MSUDF,MDF}
 43742956 HH MISS ADVANCE 9168W {DLF,HYF,IEF}

FS ADVANCE 3001A ET {DLF,HYF,IEF}
W4 3001 MISS ADVANCE D032
 43873992 B MISTY ROBIN 483B

BW	WW	YW	Milk	M&G	YSC	REA	MARB	CHB
4.5	62	101	30	61	1.3	0.38	0.15	113

Pasture exposed to W4 Nightcap G025 4/22/21 to 8/2/21. Bred.

158 W4 310 LADY RIBEYE G592

DOB: 10/26/2019 Cow 44227194 Tattoo: G592

NJW 98S R117 RIBEYE 88X ET {SOD,CHB,DLF,HYF,IEF,MSUDF,MDF}
BAR-S-SOF MR 88X 310 {DLF,HYF,IEF}
43396221 BHF MISS KOOTER 602 {DLF,HYF,IEF}

RCR L1 AURUM DOMINO 08120 {DLF,HYF,IEF}
MISS AURUM 339A {IEP}
43453821 B MISS ADVANCE 2001M {IEP}

BW	WW	YW	Milk	M&G	YSC	REA	MARB	CHB
2.7	45	69	27	50	0.5	0.33	0.16	117

Pasture exposed to W4 Nightcap G025 4/22/21 to 8/2/21. Bred.

162 W4 0387 DOMET G622

DOB: 11/01/2019 Cow 44227209 Tattoo: G622

UPS DOMINO 5216 {SOD}{DLF,IEF}
DB 5216 DOM 0387 {DLF,HYF,IEF,MSUDF}
43146486 DB MISS DOM 6005 {IEP}

CL 1 DOMINO 955W {SOD}{CHB}{DLF,HYF,IEF}
W4 955 MAGGIE 134Y ET {DLF,HYF,IEF}
43211698 RCR AURUM MARY 02086

BW	WW	YW	Milk	M&G	YSC	REA	MARB	CHB
3.5	54	95	31	59	1.5	0.49	0.03	107

Pasture exposed to W4 Nightcap G025 4/22/21 to 8/2/21. Bred.

159 W4 548C TOP LADY G612

DOB: 10/27/2019 Cow 44227198 Tattoo: G612

H/TSR/CHEZ/FULL THROTTLE ET {DLF,HYF,IEF}
CHURCHILL TOP SPEED 548C ET {DLF,HYF,IEF,MSUDF}
43586918 CHURCHILL LADY 002X ET {DLF,HYF,IEF,MSUDF,MDF}

H BANKER 613 ET {DLF,HYF,IEF}
W4 613 DOMET Y518 {IEP}
43314040 B LADY OXLEY 769 {IEP}

BW	WW	YW	Milk	M&G	YSC	REA	MARB	CHB
2.3	48	83	21	45	0.7	0.49	0.06	123

Pasture exposed to W4 Nightcap G025 4/22/21 to 8/2/21. Bred.

163 W4 4312 BAILEE G632

DOB: 11/11/2019 Cow 44227214 Tattoo: G632

C MILES MCKEE 2103 ET {SOD}{CHB}{DLF,HYF,IEF,MSUDF,MDF}
C BAILEES MILES 4312 ET {DLF,HYF,IEF,MSUDF}
43487323 BR BAILEE 1066 ET {DLF,HYF,IEF}

C HIDALGO ET {SOD}
W4 4006 DOMET W787 {HYP}
43119702 KE SUTTER 236G 6078 {HYP}

BW	WW	YW	Milk	M&G	YSC	REA	MARB	CHB
4.1	60	95	26	56	0.9	0.53	0.13	121

Pasture exposed to W4 Nightcap G025 4/22/21 to 8/2/21. Bred.

160 W4 0387 DOMET G616

DOB: 10/29/2019 Cow 44227200 Tattoo: G616

UPS DOMINO 5216 {SOD}{DLF,IEF}
DB 5216 DOM 0387 {DLF,HYF,IEF,MSUDF}
43146486 DB MISS DOM 6005 {IEP}

CL 1 DOMINO 072X {DLF,HYF,IEF}
B 72X DOMINETTE 488B {IEP}
43621047 B MISS NEON MOON 817 {IEP}

BW	WW	YW	Milk	M&G	YSC	REA	MARB	CHB
3.3	52	86	29	54	1.2	0.36	0.12	110

Pasture exposed to W4 Nightcap G025 4/22/21 to 8/2/21. Bred.

164 W4 106D DOMET G648

DOB: 11/07/2019 Cow 44227219 Tattoo: G648

C 10Y HOMETOWN 4108 {DLF,HYF,IEF,MDP}
W4 4108 HOMETOWN 106D ET {DLF,HYF,IEF,MSUDF,MDF}
43742956 HH MISS ADVANCE 9168W {DLF,HYF,IEF}

CHURCHILL DOMINO 166Y {DLF,HYF,IEF,MSUDF}
W4 166Y DOMINO D712
43833931 W4 PRINCESS DOMET U317

BW	WW	YW	Milk	M&G	YSC	REA	MARB	CHB
5	54	84	24	51	1	0.31	0.17	111

Pasture exposed to W4 Nightcap G025 4/22/21 to 8/2/21. Bred.

161 W4 0387 DOMET G619

DOB: 10/30/2019 Cow 44227203 Tattoo: G619

UPS DOMINO 5216 {SOD}{DLF,IEF}
DB 5216 DOM 0387 {DLF,HYF,IEF,MSUDF}
43146486 DB MISS DOM 6005 {IEP}

C 212 DOMINO 4011 ET {SOD}{CHB}{DLF,HYF,IEF}
W4 4011 DOMET T249
42841370 W4 492 DOMET N410

BW	WW	YW	Milk	M&G	YSC	REA	MARB	CHB
4.2	52	93	26	52	1.1	0.37	0.07	104

Pasture exposed to W4 Nightcap G025 4/22/21 to 8/2/21. Bred.

165 W4 106D DOMET G663

DOB: 11/16/2019 Cow 44227220 Tattoo: G663

C 10Y HOMETOWN 4108 {DLF,HYF,IEF,MDP}
W4 4108 HOMETOWN 106D ET {DLF,HYF,IEF,MSUDF,MDF}
43742956 HH MISS ADVANCE 9168W {DLF,HYF,IEF}

W4 592 DOMINO 102Y ET {DLF,HYF,IEF,MSUDF}
W4 8203 ADVANCE D644 {IEP}
43945932 W4 S105 DOMET W651 {IEP}

BW	WW	YW	Milk	M&G	YSC	REA	MARB	CHB
6	63	99	26	57	1.1	0.34	0.12	104

Pasture exposed to W4 Nightcap G025 4/22/21 to 8/2/21. Bred.

166 W4 4312 BAILEE G666

DOB: 11/20/2019 Cow 44227222 Tattoo: G666

C MILES MCKEE 2103 ET {SOD}{CHB}{DLF,HYF,IEF,MSUDF,MDF}
C BAILEES MILES 4312 ET {DLF,HYF,IEF,MSUDF}
43487323 BR BAILEE 1066 ET {DLF,HYF,IEF}

CL 1 DOMINO 314A {DLF,HYF,IEF}
B PI LADY 518C {IEP}
43724589 B MISSY TOP SHELF 3A {IEP}

BW	WW	YW	Milk	M&G	YSC	REA	MARB	CHB
3.5	55	88	30	58	1	0.36	0.15	118

Pasture exposed to W4 Nightcap G025 4/22/21 to 8/2/21. Bred.

170 W4 407 MS ADVANCE H021

DOB: 02/10/2020 Cow 44282617 Tattoo: H021

HH ADVANCE 2125Z {DLF,HYF,IEF}
FS ADVANCE 407B {DLF,HYF,IEF}
43466166 CL 1 DOMINETTE 057X {DLF,HYF,IEF}

C MOLER 6213 ET {DLF,HYF,IEF}
W4 6213 DOMET A622 {HYP}
43517312 W4 408 DOMET W426 {HYP}

BW	WW	YW	Milk	M&G	YSC	REA	MARB	CHB
3.1	49	74	27	52	1	0.24	0.08	103

Pasture exposed to Churchill Belle Heir 064H 6/5/21 to 8/2/21. Bred.

167 W4 7195 DOMET G692

DOB: 11/22/2019 Cow 44227227 Tattoo: G692

CL 1 DOMINO 215Z {CHB}{DLF,HYF,IEF,MSUDF,MDF}
CL 1 DOMINO 7195E {CHB}{DLF,HYF,IEF,MSUDF}
43800290 CL 1 DOMINETTE 351A {DOD}{DLF,HYF,IEF}

GOLDEN OAK OUTCROSS 18U {SOD}{DLF,HYF,IEF,MSUDF}
W4 18U DOMET 504Z
P43513585 AMH MISS 2998 281 {DLF,IEF}

BW	WW	YW	Milk	M&G	YSC	REA	MARB	CHB
3	60	100	22	52	1.2	0.5	0.13	131

Pasture exposed to W4 Nightcap G025 4/22/21 to 8/2/21. Bred.

171 W4 322 DREAMGIRL H108

DOB: 03/09/2020 Cow 44282956 Tattoo: H108

CRR 719 CATAPULT 109 {SOD}{DLF,HYF,IEF,MDF}
CRR 109 CATAPULT 322 {DLF,HYF,IEF,MSUDF,MDF}
P43384585 CRR 713 KELLY 0117 {DLF,HYF,IEF}

SR CCC JAMBALAYA 1404B ET {DLF,HYF,IEF,MSUDF}
SR JAMBA DREAMGIRL 1839 {HYP}
43987910 SR LADY 88X RAWHIDE 1545 {HYP}

BW	WW	YW	Milk	M&G	YSC	REA	MARB	CHB
3	54	84	30	57	0.5	0.44	-0.03	100

Pasture exposed to Churchill Belle Heir 064H 6/5/21 to 8/2/21. Bred.

168 W4 392A DOMET G694

DOB: 12/01/2019 Cow 44227228 Tattoo: G694

CL 1 DOMINO 0141 1ET {SOD}{DLF,HYF,IEF}
DH DOMINO 392A {DLF,HYF,IEF,MSUDF}
43459361 DH MISS ADVANCE 9156 {DLF,HYF,IEF,MSUDF}

W4 MR MVP R612
W4 612 DOMET U077 {IEP}
42927440 B LADY EXCEL 639 {IEP}

BW	WW	YW	Milk	M&G	YSC	REA	MARB	CHB
2.9	58	95	26	56	0.9	0.36	0	101

Pasture exposed to W4 Nightcap G025 4/22/21 to 8/2/21. Bred.

172 W4 548C TOP LADY H176

DOB: 03/24/2020 Cow 44282142 Tattoo: H176

H/TSR/CHEZ/FULL THROTTLE ET {DLF,HYF,IEF}
CHURCHILL TOP SPEED 548C ET {DLF,HYF,IEF,MSUDF}
43586918 CHURCHILL LADY 002X ET {DLF,HYF,IEF,MSUDF,MDF}

CL 1 DOMINO 052X 1ET {DLF,HYF,IEF}
B 52X DOMINETTE 550C {IEP}
43723425 B AMERICAN HONEY 247Z {IEP}

BW	WW	YW	Milk	M&G	YSC	REA	MARB	CHB
2.5	49	76	29	53	0.8	0.46	0.06	115

Pasture exposed to Churchill Belle Heir 064H 6/5/21 to 8/2/21. Bred.

169 W4 7195 DOMET H019

DOB: 02/07/2020 Cow 44282140 Tattoo: H019

CL 1 DOMINO 215Z {CHB}{DLF,HYF,IEF,MSUDF,MDF}
CL 1 DOMINO 7195E {CHB}{DLF,HYF,IEF,MSUDF}
43800290 CL 1 DOMINETTE 351A {DOD}{DLF,HYF,IEF}

HH ADVANCE 5044C ET {CHB}{DLF,HYF,IEF,MSUDF}
CHURCHILL LADY 7234E
43802032 CHURCHILL LADY 2137Z {DLF,HYF,IEF,MSUDF}

BW	WW	YW	Milk	M&G	YSC	REA	MARB	CHB
2	64	103	28	60	1.2	0.5	0.22	148

Pasture exposed to Churchill Belle Heir 064H 6/5/21 to 8/2/21. Bred.

173 W4 102Y RANCHER DOMET G084

DOB: 04/20/2019 Cow 44282984 Tattoo: G084

CHURCHILL RANCHER 592R {SOD}{CHB}{DLF,IEF}
W4 592 DOMINO 102Y ET {DLF,HYF,IEF,MSUDF}
43212083 BR 74 ALAINNA 3113 {DLP,HYP}

CL 1 DOMINO 052X 1ET {DLF,HYF,IEF}
B DOMINETTE 577C
43724399 B 295 DOMINETTE 808

BW	WW	YW	Milk	M&G	YSC	REA	MARB	CHB
4.3	49	78	25	49	0.5	0.26	0.13	106

Pasture exposed to KGB TFR KR Sensation 028X 1600 6/10/21 to 8/2/21. Bred.

174 W4 8117 DOMET LADY H004

DOB: 01/22/2020 Cow 44282145 Tattoo: H004

CL 1 DOMINO 6187D {CHB}{DLF,HYF,IEF,MSUDF}
CL 1 DOMINO 8117F 1ET {CHB}{DLF,HYF,IEF}
 43903300 CL1 DOMINETTE 4131B {DLF,HYF,IEF}

CHURCHILL TSC FIRST RATE 6206D {CHB}{DLF,HYF,IEF,MSUDF}
CHURCHILL LADY 848F
 43923483 CHURCHILL LADY 602D

BW	WW	YW	Milk	M&G	YSC	REA	MARB	CHB
0.7	56	90	38	66	1.3	0.41	0.38	139

Pasture exposed to KGB TFR KR Sensation 028X 1600 6/10/21 to 8/2/21. Bred.

178 W4 392A DOMET H075

DOB: 02/18/2020 Cow 44282143 Tattoo: H075

CL 1 DOMINO 0141 1ET {SOD}{DLF,HYF,IEF}
DH DOMINO 392A {DLF,HYF,IEF,MSUDF}
 43459361 DH MISS ADVANCE 9156 {DLF,HYF,IEF,MSUDF}

C PURE GOLD 6224 ET
W4 6224 DOMET Y688
 43314202 W4 4011 DOMET S039

BW	WW	YW	Milk	M&G	YSC	REA	MARB	CHB
3.1	60	102	30	60	1.1	0.56	0.02	112

Pasture exposed to KGB TFR KR Sensation 028X 1600 6/10/21 to 8/2/21. Bred.

175 W4 1600 SENSATIONAL GAL H035

DOB: 02/14/2020 Cow 44282619 Tattoo: H035

CHURCHILL SENSATION 028X {SOD}{DLF,HYF,IEF,MDF}
KGB TFR KR SENSATION 028X 1600 {DLF,HYF,IEF,MDP}
 43772981 H LAYLA 3521 {MDP}

W4 860 DOMINO A311 {DLF,HYF,IEF,MSUDF}
W4 A311 DOMET E720
 44059872 W4 188 DOMET S599

BW	WW	YW	Milk	M&G	YSC	REA	MARB	CHB
2.9	53	86	33	60	1	0.34	0.08	106

Pasture exposed to KGB TFR KR Sensation 028X 1600 6/10/21 to 8/2/21. Bred.

179 W4 310 LADY RIBEYE H088

DOB: 02/26/2020 Cow 44282232 Tattoo: H088

NJW 98S R117 RIBEYE 88X ET {SOD}{CHB}{DLF,HYF,IEF,MSUDF,MDF}
BAR-S-SOF MR 88X 310 {DLF,HYF,IEF}
 43396221 BHF MISS KOOTER 602 {DLF,HYF,IEF}

B 295 DOMINO 6058
W4 6058 DOMET A590 {IEP}
 43517301 W4 4011 DOMET U288 {IEP}

BW	WW	YW	Milk	M&G	YSC	REA	MARB	CHB
3.5	52	78	30	56	0.6	0.45	0.14	121

Pasture exposed to KGB TFR KR Sensation 028X 1600 6/10/21 to 8/2/21. Bred.

176 W4 392A DOMET H053

DOB: 02/16/2020 Cow 44282150 Tattoo: H053

CL 1 DOMINO 0141 1ET {SOD}{DLF,HYF,IEF}
DH DOMINO 392A {DLF,HYF,IEF,MSUDF}
 43459361 DH MISS ADVANCE 9156 {DLF,HYF,IEF,MSUDF}

B EXCEL 20 ET {DLF,HYF,IEF}
B MISS EXCEL 380A
 43514785 B 767 MISS ADVANCE 268M {DOD}

BW	WW	YW	Milk	M&G	YSC	REA	MARB	CHB
3.2	57	98	32	60	1	0.36	-0.02	102

Pasture exposed to KGB TFR KR Sensation 028X 1600 6/10/21 to 8/2/21. Bred.

180 W4 310 LADY RIBEYE H121

DOB: 03/16/2020 Cow 44282144 Tattoo: H121

NJW 98S R117 RIBEYE 88X ET {SOD}{CHB}{DLF,HYF,IEF,MSUDF,MDF}
BAR-S-SOF MR 88X 310 {DLF,HYF,IEF}
 43396221 BHF MISS KOOTER 602 {DLF,HYF,IEF}

HH ADVANCE 9005J {DLF,IEF}
W4 9005 DOMET 503Z {IEP}
 43513601 C MS GAME PLAN 4007 ET {IEP}

BW	WW	YW	Milk	M&G	YSC	REA	MARB	CHB
3.6	49	75	27	51	0.6	0.39	0.11	116

Pasture exposed to KGB TFR KR Sensation 028X 1600 6/10/21 to 8/2/21. Bred.

177 W4 101D MS ADVANCE JAKE H070

DOB: 02/19/2020 Cow 44282229 Tattoo: H070

TFR KU ROLL THE DICE 1326 {DLF,HYF,IEF}
W4 1326 HARD EIGHT 101D ET {DLF,HYF,IEF,MSUDF}
 43735397 HH MISS ADVANCE 9168W {DLF,HYF,IEF}

HH ADVANCE 1059Y {CHB,DLF,HYF,IEF}
FS MISS ADVANCE 422B {DLF,HYF,IEF}
 43466180 FS MISS ADVANCE 1109Y {DLF,HYF,IEF}

BW	WW	YW	Milk	M&G	YSC	REA	MARB	CHB
3.8	56	90	27	55	1.0	0.58	0.08	122

Pasture exposed to KGB TFR KR Sensation 028X 1600 6/10/21 to 8/2/21. Bred.

181 W4 310 LADY RIBEYE H126

DOB: 03/16/2020 Cow 44282238 Tattoo: H126

NJW 98S R117 RIBEYE 88X ET {SOD}{CHB}{DLF,HYF,IEF,MSUDF,MDF}
BAR-S-SOF MR 88X 310 {DLF,HYF,IEF}
 43396221 BHF MISS KOOTER 602 {DLF,HYF,IEF}

W4 592 DOMINO 102Y ET {DLF,HYF,IEF,MSUDF}
W4 102 DOMET B518
 43596470 H LADY DOMINO 535E

BW	WW	YW	Milk	M&G	YSC	REA	MARB	CHB
3.8	52	79	28	55	0.5	0.43	0.17	121

Pasture exposed to KGB TFR KR Sensation 028X 1600 6/10/21 to 8/2/21. Bred.

182 W4 108E SENSATIONAL DOMET H161

DOB: 03/27/2020 Cow 44282243 Tattoo: H161

UPS SENSATION 2296 ET {DLF,HYF,IEF,MSUDF,MDF}
W4 2296 SENSATION 108E {DLF,HYF,IEF,MSUDF}
P43852998 TOWNER PHYLLIS 20B ET {DLF,HYF,IEF}

W4 -S ADVANCE DOM W168 ET
W4 W168 DOMET Z527 {HYP}
43491653 LBJ HUSKER MAID 614 {HYP}

BW	WW	YW	Milk	M&G	YSC	REA	MARB	CHB
2.6	49	80	30	54	0.6	0.53	0.04	110

Pasture exposed to KGB TFR KR Sensation 028X 1600 6/10/21 to 8/2/21. Bred.

183 W4 MV E030 ADVANCE DIVA H413

DOB: 02/21/2020 Cow 44173158 Tattoo: H413

C 10Y HOMETOWN 4108 {DLF,HYF,IEF,MDP}
W4 4108 HOMETOWN 106D ET {DLF,HYF,IEF,MSUDF,MDF}
43742956 HH MISS ADVANCE 9168W {DLF,HYF,IEF}

W4 S109 ADVANCE 502Y ET {DLF,HYF,IEF}
W4 502Y ADVANCE DIVA E616
43989082 W4 OUTCROSS DIVA 104Z ET

BW	WW	YW	Milk	M&G	YSC	REA	MARB	CHB
5.1	60	96	27	57	1.0	0.48	0.06	109

Pasture exposed to KGB TFR KR Sensation 028X 1600 6/10/21 to 8/2/21. Bred.





Lots 184-213 - Open Hereford Heifers

184 W4 392A DOMET H048

DOB: 02/14/2020 Cow 44282312 Tattoo: H048

CL 1 DOMINO 0141 1ET {SOD}{DLF,HYF,IEF}
DH DOMINO 392A {DLF,HYF,IEF,MSUDF}
 43459361 DH MISS ADVANCE 9156 {DLF,HYF,IEF,MSUDF}

HH ADVANCE 2125Z {DLF,HYF,IEF}
FS MISS ADVANCE 406B {DLF,HYF,IEF}
 43466165 EL MISS ADVANCE 810U {IEP}

BW	WW	YW	Milk	M&G	YSC	REA	MARB	CHB
1.9	56	92	32	60	1	0.33	-0.03	98

Open.

186 W4 101D JAKE DOM H069

DOB: 02/22/2020 Cow 44282332 Tattoo: H069

TFR KU ROLL THE DICE 1326 {DLF,HYF,IEF}
W4 1326 HARD EIGHT 101D ET {DLF,HYF,IEF,MSUDF}
 43735397 HH MISS ADVANCE 9168W {DLF,HYF,IEF}

JA L1 DOMINO 1000Y {DLF,HYF,IEF}
DH L1 DOMINETTE 489
 43485144 JA L1 DOMINETTE 7609T

BW	WW	YW	Milk	M&G	YSC	REA	MARB	CHB
4	52	82	25	51	1.1	0.5	0.04	113

Open.

185 W4 392A DOMET H055

DOB: 02/18/2020 Cow 44282323 Tattoo: H055

CL 1 DOMINO 0141 1ET {SOD}{DLF,HYF,IEF}
DH DOMINO 392A {DLF,HYF,IEF,MSUDF}
 43459361 DH MISS ADVANCE 9156 {DLF,HYF,IEF,MSUDF}

F 157K RIBSTONE 763 {SOD}{CHB}{DLF,HYF,IEF}
B LADY RIBSTONE 916
 43007748 B LADY EXCELL 510 {DOD}

BW	WW	YW	Milk	M&G	YSC	REA	MARB	CHB
3.8	64	106	31	63	1.3	0.47	0.01	111

Open.

187 W4 392A DOMET H077

DOB: 02/18/2020 Cow 44282341 Tattoo: H077

CL 1 DOMINO 0141 1ET {SOD}{DLF,HYF,IEF}
DH DOMINO 392A {DLF,HYF,IEF,MSUDF}
 43459361 DH MISS ADVANCE 9156 {DLF,HYF,IEF,MSUDF}

CL 1 DOMINO 697S {DLF,HYF,IEF}
MISS DOMINO M208Z {HYP}
 43338032 MISS DOMINO M107 {HYP}

BW	WW	YW	Milk	M&G	YSC	REA	MARB	CHB
3.1	56	94	26	54	0.9	0.4	-0.01	100

Open.

188 W4 353 MS ADVANCE H105

DOB: 03/07/2020 Cow 44282353 Tattoo: H105

HH ADVANCE 1098Y {DLF,HYF,IEF}
FS ADVANCE 353A {DLF,HYF,IEF}
43444412 HH MISS ADVANCE 9068W ET {DLF,HYF,IEF}

HH ADVANCE 1006Y ET {DLF,HYF,IEF}
DH L1 DOMINETTE 415 {HYP,IEP}
43484741 DH L1 DOMINETTE 030 {HYP,IEP}

BW	WW	YW	Milk	M&G	YSC	REA	MARB	CHB
3.3	57	83	25	54	1.1	0.24	0.02	96

Open.

192 W4 136Y DOMET H119

DOB: 03/02/2020 Cow 44282376 Tattoo: H119

CL 1 DOMINO 955W {SOD}{CHB}{DLF,HYF,IEF}
W4 955 DOMINO 136Y 2ET {DLF,HYF,IEF,MSUDF}
43212032 C MS PURE GOLD 5007 ET {DLF,HYF,IEF}

B EXCEL 20 ET {DLF,HYF,IEF}
B LADY EXCEL 570C {IEP}
43724390 B LADY EXCEL 517 {IEP}

BW	WW	YW	Milk	M&G	YSC	REA	MARB	CHB
3	45	77	24	46	0.8	0.24	0.07	112

Open.

189 W4 B080 DOMET H107

DOB: 03/11/2020 Cow 44282360 Tattoo: H107

W4 -S ADVANCE DOM W168 ET
W4 W168 DOMINO B080 {DLF,HYF,IEF,MSUDF}
43520661 W4 4011 DOMET T127

DH DOMINO 915
DH MS ADVANCE 3197 {IEP}
43460907 DH DOMINETTE 1213Y {IEP}

BW	WW	YW	Milk	M&G	YSC	REA	MARB	CHB
3.1	47	82	27	51	0.8	0.39	-0.03	99

Open.

193 W4 B080 DOMET H135

DOB: 03/21/2020 Cow 44282379 Tattoo: H135

W4 -S ADVANCE DOM W168 ET
W4 W168 DOMINO B080 {DLF,HYF,IEF,MSUDF}
43520661 W4 4011 DOMET T127

H W4 GRIZZLY 0146 ET {DLF,HYF,IEF}
W4 0146 DOMINETTE 113C ET
43596307 W4 627 DOMINETTE W493 ET {DLF,HYF,IEF}

BW	WW	YW	Milk	M&G	YSC	REA	MARB	CHB
3.8	51	89	29	54	0.9	0.44	-0.01	101

Open.

190 W4 1600 SENSATIONAL DOM H115

DOB: 03/08/2020 Cow 44282366 Tattoo: H115

CHURCHILL SENSATION 028X {SOD}{DLF,HYF,IEF,MDF}
KGB TFR KR SENSATION 028X 1600 {DLF,HYF,IEF,MDP}
43772981 H LAYLA 3521 {MDP}

CHURCHILL DOMINO 166Y {DLF,HYF,IEF,MSUDF}
W4 166Y DOMET E640
44059723 W4 1123 DOMET B021

BW	WW	YW	Milk	M&G	YSC	REA	MARB	CHB
3.3	55	85	34	61	1.2	0.33	0.2	118

Open.

194 W4 3001 MISS ADVANCE H139

DOB: 03/25/2020 Cow 44282384 Tattoo: H139

HH ADVANCE 0002X {SOD}{DLF,HYF,IEF,MSUDF,MDF}
FS ADVANCE 3001A ET {DLF,HYF,IEF}
43418093 EL MISS ADVANCE 710T {DLF,HYF,IEF}

W4 955 DOMINO 136Y 2ET {DLF,HYF,IEF,MSUDF}
W4 502Y DOMET D009
43930654 W4 146 AURUM MARY 9406

BW	WW	YW	Milk	M&G	YSC	REA	MARB	CHB
3.4	57	92	28	56	1.1	0.45	-0.03	107

Open.

191 W4 B080 DOMET H117

DOB: 03/12/2020 Cow 44282369 Tattoo: H117

W4 -S ADVANCE DOM W168 ET
W4 W168 DOMINO B080 {DLF,HYF,IEF,MSUDF}
43520661 W4 4011 DOMET T127

DOMINO M021
MISSXDOMINO M517 {HYP}
43597525 MISS DOMINO M311 {HYP}

BW	WW	YW	Milk	M&G	YSC	REA	MARB	CHB
3.6	47	81	28	52	0.9	0.36	-0.01	98

Open.

195 W4 136Y DOMET H142

DOB: 03/30/2020 Cow 44282389 Tattoo: H142

CL 1 DOMINO 955W {SOD}{CHB}{DLF,HYF,IEF}
W4 955 DOMINO 136Y 2ET {DLF,HYF,IEF,MSUDF}
43212032 C MS PURE GOLD 5007 ET {DLF,HYF,IEF}

HH ADVANCE 2102Z {DLF,HYF,IEF}
DH L1 DOMINETTE 421 {HYP}
43485083 DH L1 DOMINETTE 811 {HYP}

BW	WW	YW	Milk	M&G	YSC	REA	MARB	CHB
2.3	43	72	24	45	0.6	0.33	0.09	123

Open.

196 W4 353 MISS ADVANCE H146

DOB: 03/20/2020 Cow 44282393 Tattoo: H146

HH ADVANCE 1098Y {DLF,HYF,IEF}
FS ADVANCE 353A {DLF,HYF,IEF}
 43444412 HH MISS ADVANCE 9068W ET {DLF,HYF,IEF}

CHURCHILL RANCHER 592R {SOD}{CHB}{DLF,IEF}
W4 592 DOMET Y573
 43314091 C COWGIRL 7176 ET

BW	WW	YW	Milk	M&G	YSC	REA	MARB	CHB
3.6	53	81	27	53	0.9	0.28	0.04	106

Open.

197 W4 353 MISS ADVANCE H150

DOB: 03/27/2020 Cow 44282399 Tattoo: H150

HH ADVANCE 1098Y {DLF,HYF,IEF}
FS ADVANCE 353A {DLF,HYF,IEF}
 43444412 HH MISS ADVANCE 9068W ET {DLF,HYF,IEF}

LONE STAR DOMINO 484 T228
LONE STAR DOMINETTE T228 Y225
 43287664 L STAR DONNA 497L R050

BW	WW	YW	Milk	M&G	YSC	REA	MARB	CHB
2.3	43	66	28	49	0.9	0.16	0.03	99

Open.

198 W4 310 LADY RIBEYE H175

DOB: 03/30/2020 Cow 44282404 Tattoo: H175

NJW 98S R117 RIBEYE 88X ET {SOD}{CHB}{DLF,HYF,IEF,MSUDF,MDF}
BAR-S-SOF MR 88X 310 {DLF,HYF,IEF}
 43396221 BHF MISS KOOTER 602 {DLF,HYF,IEF}

-S ADV DOM 7008G S135 ET
L STAR MS ADVANCE W096 {HYP}
 43007978 L STAR GOLDIE M315 R188 {HYP}

BW	WW	YW	Milk	M&G	YSC	REA	MARB	CHB
3.2	48	75	27	50	0.6	0.48	0.11	121

Open.

199 W4 3001 MISS ADVANCE H177

DOB: 03/27/2020 Cow 44282407 Tattoo: H177

HH ADVANCE 0002X {SOD}{DLF,HYF,IEF,MSUDF,MDF}
FS ADVANCE 3001A ET {DLF,HYF,IEF}
 43418093 EL MISS ADVANCE 710T {DLF,HYF,IEF}

W4 613 DOMINO W219
W4 W219 DOMET D004 {HYP,IEP}
 43930653 W4 4011 DOMET U251 {HYP,IEP}

BW	WW	YW	Milk	M&G	YSC	REA	MARB	CHB
3.3	54	93	30	57	1	0.42	0.06	118

Open.

200 W4 B080 DOMET H179

DOB: 04/09/2020 Cow 44282412 Tattoo: H179

W4 -S ADVANCE DOM W168 ET
W4 W168 DOMINO B080 {DLF,HYF,IEF,MSUDF}
 43520661 W4 4011 DOMET T127

H BANKER 613 ET {DLF,HYF,IEF}
W4 613 DOMET A028 {IEP}
 43513623 W4 072 DOMET M067 {IEP}

BW	WW	YW	Milk	M&G	YSC	REA	MARB	CHB
3.4	48	87	27	51	0.8	0.43	0.02	107

Open.

201 W4 407 MISS ADVANCE H185

DOB: 04/11/2020 Cow 44282422 Tattoo: H185

HH ADVANCE 2125Z {DLF,HYF,IEF}
FS ADVANCE 407B {DLF,HYF,IEF}
 43466166 CL 1 DOMINETTE 057X {DLF,HYF,IEF}

WR GAME DAY R019 {IEP}
W4 R019 DOMET U120 {IEP}
 42927471 W4 041 DOMET P242 {IEP}

BW	WW	YW	Milk	M&G	YSC	REA	MARB	CHB
3.2	46	69	26	49	0.9	0.23	0.04	98

Open.

202 W4 101D JAKE DOM H191

DOB: 04/19/2020 Cow 44282425 Tattoo: H191

TFR KU ROLL THE DICE 1326 {DLF,HYF,IEF}
W4 1326 HARD EIGHT 101D ET {DLF,HYF,IEF,MSUDF}
 43735397 HH MISS ADVANCE 9168W {DLF,HYF,IEF}

CL 1 DOMINO 193Y 1ET {DLF,HYF,IEF}
MISS DOMINO M311 {HYP}
 443417348 MISS DOMINO M906 {HYP}

BW	WW	YW	Milk	M&G	YSC	REA	MARB	CHB
3.6	50	78	31	57	1.0	0.48	0.05	110

Open.

203 W4 353 MISS ADVANCE H202

DOB: 04/08/2020 Cow 44282427 Tattoo: H202

HH ADVANCE 1098Y {DLF,HYF,IEF}
FS ADVANCE 353A {DLF,HYF,IEF}
 43444412 HH MISS ADVANCE 9068W ET {DLF,HYF,IEF}

CL 1 DOMINO 955W {SOD}{CHB}{DLF,HYF,IEF}
W4 955 DOMET 503Y ET
 43412326 C MS PURE GOLD 5007 ET {DLF,HYF,IEF}

BW	WW	YW	Milk	M&G	YSC	REA	MARB	CHB
3	51	78	30	55	1	0.4	-0.02	107

Open.

204 W4 353 MISS ADVANCE H204
 DOB: 04/05/2020 Cow 44282529 Tattoo: H204

HH ADVANCE 1098Y {DLF,HYF,IEF}
FS ADVANCE 353A {DLF,HYF,IEF}
 43444412 HH MISS ADVANCE 9068W ET {DLF,HYF,IEF}

HH ADVANCE 8203U ET {SOD}{DLF,IEF}
W4 8203 DOMET 103Y 1ET {DLP,HYP}
 43211684 BR 74 ALAINNA 3113 {DLP,HYP}

BW	WW	YW	Milk	M&G	YSC	REA	MARB	CHB
4.4	52	74	23	49	1	0.21	0.07	103

Open.

208 W4 310 LADY RIBEYE H213
 DOB: 05/01/2020 Cow 44282534 Tattoo: H213

NJW 98S R117 RIBEYE 88X ET {SOD}{CHB}{DLF,HYF,IEF,MSUDF,MDF}
BAR-S-SOF MR 88X 310 {DLF,HYF,IEF}
 43396221 BHF MISS KOOTER 602 {DLF,HYF,IEF}

B CHURCHILL 6033 {IEP}
W4 6033 DOMET U861 {IEP}
 43015037 W4 041 DOMET R563 {IEP}

BW	WW	YW	Milk	M&G	YSC	REA	MARB	CHB
3.6	47	71	25	48	0.5	0.36	0.15	117

Open.

205 W4 353 MISS ADVANCE H205
 DOB: 04/07/2020 Cow 44282530 Tattoo: H205

HH ADVANCE 1098Y {DLF,HYF,IEF}
FS ADVANCE 353A {DLF,HYF,IEF}
 43444412 HH MISS ADVANCE 9068W ET {DLF,HYF,IEF}

JA L1 DOMINO 1000Y {DLF,HYF,IEF}
DH L1 DOMINETTE 4127 {HYP}
 43485140 JA L1 DOMINETTE 7202T {HYP}

BW	WW	YW	Milk	M&G	YSC	REA	MARB	CHB
2.3	46	70	27	51	1.1	0.18	-0.01	98

Open.

209 W4 101D JAKE DOM H216
 DOB: 05/04/2020 Cow 44282535 Tattoo: H216

TFR KU ROLL THE DICE 1326 {DLF,HYF,IEF}
W4 1326 HARD EIGHT 101D ET {DLF,HYF,IEF,MSUDF}
 43735397 HH MISS ADVANCE 9168W {DLF,HYF,IEF}

HH ADVANCE 8203U ET {SOD}{DLF,IEF}
W4 8203 DOMET A512
 43517262 H LADY DOMINO 6053 ET

BW	WW	YW	Milk	M&G	YSC	REA	MARB	CHB
5.2	58	88	27	56	1.1	0.55	0.16	122

Open.

206 W4 353 MISS ADVANCE H209
 DOB: 05/01/2020 Cow 44282531 Tattoo: H209

HH ADVANCE 1098Y {DLF,HYF,IEF}
FS ADVANCE 353A {DLF,HYF,IEF}
 43444412 HH MISS ADVANCE 9068W ET {DLF,HYF,IEF}

HH ADVANCE 8203U ET {SOD}{DLF,IEF}
W4 8203 DOMET 122Y 1ET {DLF,HYF,IEF}
 P43211694 GKB 146 MISS MARK B422 {DLF,HYF,IEF}

BW	WW	YW	Milk	M&G	YSC	REA	MARB	CHB
4.1	52	73	26	52	1.1	0.25	0.05	99

Open.

210 W4 3001 MISS ADVANCE H217
 DOB: 05/08/2020 Cow 44282536 Tattoo: H217

HH ADVANCE 0002X {SOD}{DLF,HYF,IEF,MSUDF,MDF}
FS ADVANCE 3001A ET {DLF,HYF,IEF}
 43418093 EL MISS ADVANCE 710T {DLF,HYF,IEF}

BPX ADVANCE 1033 {DLF,HYF,IEF}
DH MISS ADVANCE 4303 {IEP}
 43587857 DH MS ADVANCE 3157 {IEP}

BW	WW	YW	Milk	M&G	YSC	REA	MARB	CHB
3.2	56	89	31	59	1.1	0.4	0.04	113

Open.

207 W4 108E SENSATIONAL DOMET H211
 DOB: 04/25/2020 Cow 44282533 Tattoo: H211

UPS SENSATION 2296 ET {DLF,HYF,IEF,MSUDF,MDF}
W4 2296 SENSATION 108E {DLF,HYF,IEF,MSUDF}
 P43852998 TOWNER PHYLLIS 20B ET {DLF,HYF,IEF}

DS 9022 L1 2118 {DLF,IEF}
L STAR DOMINETTE 2118 S020 {IEP}
 42683087 L STAR MISS 9301 N372 {IEP}

BW	WW	YW	Milk	M&G	YSC	REA	MARB	CHB
1.9	50	80	27	52	0.3	0.53	0.04	112

Open.

211 W4 310 MISS RIBEYE H223
 DOB: 04/01/2020 Cow 44282537 Tattoo: H223

NJW 98S R117 RIBEYE 88X ET {SOD}{CHB}{DLF,HYF,IEF,MSUDF,MDF}
BAR-S-SOF MR 88X 310 {DLF,HYF,IEF}
 43396221 BHF MISS KOOTER 602 {DLF,HYF,IEF}

W4 4011 DOMINO S025 {DLF,IEF}
W4 S025 DOMET Y689 {IEP}
 43314203 H LADY DOMINO 6048 {IEP}

BW	WW	YW	Milk	M&G	YSC	REA	MARB	CHB
3.5	47	70	29	52	0.6	0.46	0.15	119

Open.

212 W4 3001 MISS ADVANCE H227

DOB: 05/09/2020 Cow 44282538 Tattoo: H227

HH ADVANCE 0002X {SOD}{DLF,HYF,IEF,MSUDF,MDF}
FS ADVANCE 3001A ET {DLF,HYF,IEF}
 43418093 EL MISS ADVANCE 710T {DLF,HYF,IEF}

W4 613 DOMINO W219
W4 W219 DUTCHESS D109
 43931808 W4 DUTCHESS W422 ET

BW	WW	YW	Milk	M&G	YSC	REA	MARB	CHB
3.6	55	95	28	56	0.9	0.44	0.08	123

Open.

213 W4 136Y DOMET H230

DOB: 05/01/2020 Cow 44282539 Tattoo: H230

CL 1 DOMINO 955W {SOD}{CHB}{DLF,HYF,IEF}
W4 955 DOMINO 136Y 2ET {DLF,HYF,IEF,MSUDF}
 43212032 C MS PURE GOLD 5007 ET {DLF,HYF,IEF}

W4 4011 DOMINO S025 {DLF,IEF}
W4 S025 DOMET Z189 {IEP}
 43413936 W4 3382 DOMET S723 {IEP}

BW	WW	YW	Milk	M&G	YSC	REA	MARB	CHB
3	49	78	26	51	0.9	0.52	-0.01	113

Open.

Thank you for your interest in our sale and W4! Let us know how we can help you.



Notes...

HOW TO PARTICIPATE AS AN ABSENTEE BUYER

We have made preparations to bid and buy livestock through Superior Productions' "Call or Click-To-Bid" service for those unable to attend in person on sale day. Please note that all of the lots in the sale will also be available for viewing online prior to sale day at www.superiorlivestock.com.



HERE'S HOW IT WORKS

Turn in Bids Over the Phone. This is our traditional method of buying livestock. To get started simply go online to www.superiorlivestock.com and click on the tab titled "Register for a Buyer Number." Select the registration form for Superior Productions and print the registration form, fill it out and fax it in to Superior Productions at (817) 378-3380 with a signature on it, or scan and email the form to info@superiorauction.com. You can also mail it in to the address provided on the form. Upon receipt of this information Superior will call you with a buyer's number and the bid line phone number that you will use on sale day to place bids over the phone.

Click-To-Bid. This is Superior's online bidding platform for cattle buying. **Please note that high speed internet is required – this is not for dial-up or satellite internet.** Registration is free, but you must become a member of www.superiorlivestock.com to sign up. Becoming a member is easy – just go to the homepage of www.superiorclicktobid.com and follow the out-lined steps to get started. Input your information and select a username and password. You will receive an e-mail confirming you are a member. From that point forward you just have to sign in and select the sale you would like to register for and once approved you will receive an e-mail confirming which sale you are now registered for.

Viewing the Auction. There are 2 places to view the sale broadcast live on the internet: www.superiorlivestock.com or www.superiorclicktobid.com. Just go to the home page of either website and select the auction. If you just want to watch the auction on your computer, smartphone or tablet go to www.superiorlivestock.com, but if you want to bid over the computer you must go to www.superiorclicktobid.com. Remember you can call in to bid on the internet, but you must be a member of www.superiorclicktobid.com to "click- to-bid." Your computer must have Flash Media Player installed for this website to view the auction. If you have any questions, please call the Superior Productions office at 800-431-4452.

***If you plan to bid by phone through Superior Livestock or 'Click-to-Bid,' you must register at www.superiorlivestock.com prior to bidding.**

Buyers will be contacted by the ranch after the sale for payment and delivery details.

**IF YOU NEED ANY ASSISTANCE
CALL SUPERIOR AT (800) 422-2117.**



Home For Sale

SPRING PRODUCTION SALE - SATURDAY, APRIL 11, 2021

Donors

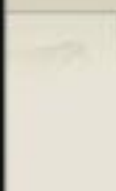
Hard Sires



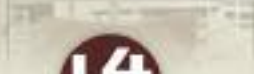
CMS WARD PLAN NOT 2



CL 7 DOMINO 2004



OUR THE WOOD MARK 200



W4 231 DOMINO TEST ET



For news about the ranch, our cattle and events we participate in throughout the year, visit

www.w4ranch.com



Joe, Joey and Tripp Walker - three generations now apart of the family ranch.

JOHNSON

CATTLE MARKETING

Tom Johnson
440 FM 246
Wortham, TX 76693
903/599-2403

FIRST CLASS MAIL
U.S. POSTAGE
PAID
WORTHAM, TX
PERMIT NO. 8



Lot 77



Lot 98

RANCH

EST. 1961