




Copeland
& SONS LLC
Herefords

Annual Bull Sale

DEMAND THE BRAND

MONDAY, MARCH 28, 2022

1 PM MDT • FIVE STATES LIVESTOCK AUCTION • CLAYTON, NEW MEXICO

FELLOW CATTLE PRODUCERS - WELCOME TO OUR ANNUAL DEMAND THE BRAND SALE.

A lot has happened since our sale last year. We lost Clifford in November and his guidance and advice will always be missed. We are dedicating this sale to him.

On the bright side our grand daughter Cally Jo joined our family and as you might expect she is the hit of the party around here every day. It is exciting to have the next generation on the ranch.

We had a bull, sold in our sale a couple years ago, and purchased by Farr Cattle Company. He went on to be entered into the Olsen sire test conducted by the American Hereford Association. He finished number one in many categories, and is in the best of the best category for marbling. You will see more about him later in the catalog.

The bulls definitely are a group to study. There are good herd bull prospects as well as outstanding range bulls. A lot of quality in this offering.



Marty and Erin Mathis have been consigning commercial yearling heifers, sired by our bulls, to the sale. This year they have a nice set of two-year old baldy pairs to offer you. The cows are sired by our bulls as usual. All of the work has been done for you and they just need turned out and a bull put in with them when you are ready.

The bulls were developed in a big pasture with plenty of exercise. Thank you for your interest in our program.

Come have lunch with us sale day. If we can assist you in any way don't hesitate to call on us.

THE COPELAND AND SONS FAMILY



CALLY JO COPELAND
Born November 4, 2021

COPELAND & SONS

859 Romero Road Nara Visa, New Mexico 88430

CLIFF HOME 575.633.2800 **CLIFF CELL** 575.403.8123

MATT 580.336.8284 **ALYSSA** 731.499.3356

ONLINE. www.copelandherefords.com





Annual Bull Sale

DEMAND THE BRAND

Monday, March 28, 2022

MONDAY, MARCH 28 2022 • 1 PM MDT • FIVE STATES LIVESTOCK AUCTION • CLAYTON, NEW MEXICO

SALE SCHEDULE

11:30 AM MDT - LUNCH Served

1:00 PM MDT - DEMAND THE BRAND SALE

AIR TRANSPORTATION

Rick Husband Amarillo International Airport in Amarillo, TX is approximately 140 miles from the Five States Livestock Auction in Clayton, NM. We suggest you allow 2 ½ hours of travel time between locations.

TERMS AND CONDITIONS

All bulls sell according to the Terms & Conditions of the American Hereford Association. Copeland & Sons Herefords will be retaining a ¼ semen interest in all bulls selling. You, the new owner, will have full use and salvage value of the bull(s). If the bull(s) is collected it will be at your convenience and Copeland & Sons Herefords expense. We are retaining all cloning rights on all sale animals.

MORTALITY INSURANCE

For Mortality Insurance will be available at the clerks office sale day, contact: **Justin Knight (505) 490-3455.**

BULL GUARANTEE

All bulls selling have passed a Breeding Soundness Examination within 30 days of the sale. If injured within the first breeding season (in case of bulls, making them functionally infertile) we will provide you a satisfactory replacement or issue a credit equal to your purchase price, minus the salvage value that may be used toward the purchase of a bull in a future Copland & Sons LLC. Demand the Brand Annual Bull Sale. Breeding season is defined as the 90-day period following the first turn out of the bull(s). If you do not intend to use the bull for some time after purchase, we suggest an additional BSE by a licensed Veterinarian to assure the highest conception rates possible. We suggest normal management practices in caring for your bulls. This fertility guarantee does not cover a bull's ability to produce freezable high quality semen suitable for artificial insemination.

SALE LOCATION

Five States Livestock Auction, Clayton, New Mexico

GPS Address: 54 Lake Highway, Clayton, New Mexico 88415

Kenneth Dellinger - 575.374.2505

SALE DAY PHONES

Cliff Copeland - 575.403.8123 **Matt Copeland** - 508.336.8284

Alyssa Copeland - 731.499.3356 **Dustin Layton** - 405.464.2455

SALE STAFF

Dustin Layton, Auctioneer & Sale Management - 405.464.2455

Colton Pratz, Hereford World - 405.385.1054

Jack Chastain, Texas Hereford Association - 817.821.3544

Chisolm Kinder, Oklahoma Cowman - 405.747.4683

Juston Stelzer, Stelzer Auction Service - 817.992.7059

Blake Tucker, Superior Livestock Productions - 308.660.3963

VETERINARIAN

Feel free to contact our veterinarians with any questions about our herd.

Clayton Veterinary Consultants, Donald and Mark Reif

Clayton, New Mexico - 575.374.2332

Embryologist: Clay Breiner, Cross Country Genetics

Carcass Scans: Paul Ritter

HOTELS

CLAYTON, NEW MEXICO

Best Western Kokopelli Lodge - 575.374.2589 **Days Inn & Suites** - 575.374.0133

Eklund Hotel - 575.374.2551 **Holiday Motel** - 575.374.2558

DALHART, TEXAS (45 minute travel time)

LaQuinta Inn & Suites - 806.249.1145 **Best Western Nursanickel** - 806.244.5637

Holiday Inn Express & Suites - 806.244.1001

ABSENTEE BIDDERS HOW TO PARTICIPATE ON THE PHONE OR ONLINE HERE'S HOW IT WORKS...



TURN IN BIDS OVER THE PHONE. This is our traditional method of buying livestock and is the suggested process for anyone who does not have excellent, high-speed internet. To get started, simply go online to www.superiorlivestock.com and click on the tab titled "Register for a Buyer Number." Select the registration form for Superior Productions and print the registration form. Fill it out and fax it in to Superior Productions at (817) 378-3380 with a signature on it. You can also mail it in to the address provided on the form. Upon receipt of this information, Superior will call you with a buyer's number and the bid line phone number that you will use on sale day to place bids over the phone.

CLICK-TO-BID. This is Superior's online bidding program for cattle buying. Please note, high-speed internet is required—this is not for dial-up or satellite internet. Registration is free, but you must become a member of www.superiorclicktobid.com to sign up. Becoming a member is easy; just go to the home page of www.superiorclicktobid.com and follow the outlined steps to get started. Input your information and select a username and password. You will

receive an email confirming you are a member. From that point forward, you just have to sign in and select the sale you would like to register for and, once approved by the ranch, you will receive an email confirming which sale you are now registered for.

VIEWING THE AUCTION. Sale will be broadcast on www.superiorclicktobid.com. The video feed on the homepage of www.superiorlivestock.com looks the same as the video feed on TV and can be watched over a smartphone or tablet. Remember, you can call in to bid whether watching on the TV or on the internet, but you must be a member of www.superiorclicktobid.com to "click-to-bid."

Buyers will be contacted by the ranch after the sale for payment and delivery details. **IF YOU NEED ANY ASSISTANCE, CALL SUPERIOR: (800) 422-2117**



Husband, Dad, Grandad, Great-Grandad **CLIFFORD COPELAND**

We are dedicating our bull sale this year to our Husband, Dad, Grandad, and Great Grandad, Clifford Copeland. We thought it would be nice to say a few things about his life.

He was born in Lubbock, Tx in 1932. He and his family moved to Dumas, TX for some years until Clifford's dad and grandad found a ranch in New Mexico to buy. So, in 1943 the family moved to the present ranch located south of Amistad.

Even as a very young boy he always liked livestock and cattle in particular. The family brought Hereford cattle with them to New Mexico and that was the start of Jack Copeland and Sons Herefords. It also started his lifelong commitment to Herefords and ranching. There has never been anyone more dedicated to the Hereford breed, its improvement, and its contribution to the beef industry than Clifford.

Clifford married Barbara in 1952 and they held the place together through thick and thin.

He was always most interested in helping young folks get a start showing cattle and having Hereford projects.

Clifford and Barbara were members of the NM Hereford Association, and The American Hereford Association, from the beginning. The NM Cattle Growers and the juniors of that organization were always very important to them as well.

As a result of a life of dedication and improvement to the Hereford breed, they were inducted into the American Hereford Association Hall of Fame in 2018. This is the highest honor one can achieve in the Hereford breed.

Clifford was a great cowman. Cliff says he was the best cowman he has ever known. He was a master at blending bloodlines to achieve a better animal. Clifford's grandad told him that if he only had 2 cows, he would want to cull one of them. Clifford was just the same. Always looking for a reason to cull one to make the herd better. His goal was always to produce the very best cattle possible.

That philosophy is exemplified in the bull offering that is presented in this sale. Clifford never took many vacations as he always thought he was on vacation every day doing just what he wanted to do, and that was ranching and Hereford cattle. Thanks for everything you have done for your family and this great breed of cattle.



A great cowman and family man. We will miss him daily.



LOT 1

1 JCS MAKERS MARK 1136

BULL	3/21/21	REG 44268427	TATTOO 1136	POLLED	{DLF,HYF,IEF,MSUDF}
BOYD 31Z BLUEPRINT 6153			R LEADER 6964		
GREEN JCS MAKERS MARK 229G ET			NJW 91H 100W RITA 31Z ET		
JDH AH MERCEDES 11E ET			JDH VICTOR 719T 33Z ET		
NJW 73S W18 HOMETOWN 10Y ET			AH MS 25L RUMBLER 19Z		
JCS DELTA DAWN 5832 ET			SHF WONDER M326 W18 ET		
JCS MISS ROYALTY 4720			NJW P606 72N DAYDREAM 73S		
			CHURCHILL ROYAL 11Z		
			JCS 184 DOMINET 447		



JCS MISS ROYALTY 4720 - MATERNAL GRANDDAM

CED	BW	WW	YW	MILK	SC	REA	MARB	SCHB	ACT BW	82
8.4	1.7	63	97	34	1.8	0.37	-0.05	109	ADI WW	739

- We kick off this year's annual bull sale with a tremendous individual sired by the ever-popular herd bull, Makers Mark that we jointly own with GKB Cattle and Steven Green. This is the first Makers Mark calf crop and with the quality of phenotype and numerical profiles he is passing onto his progeny--it has us flat out excited.
- 1136 has been one of the favorites at the ranch since birth as he is short marked, heavily pigmented, dark red in color, equipped with tremendous depth and spring of rib, big hipped, fault free in structure and eye-appealing

- from every angle. Study his figures as he displays calving-ease, performance and maternal strength.
- 1136 is a descendant of 4720, one of the most prolific females in the history of our program. We are very excited about this future herd bull and we will be using him AI in our program.
- Posted a WW ratio of 105.
- **SELLING FULL POSSESSION AND ½ SEMEN INTEREST.**



LOT 2

2 JCS MAKERS MARK 1153



BULL 3/30/21 REG 44268429 TATTOO 1153 POLLED

BOYD 31Z BLUEPRINT 6153

GREEN JCS MAKERS MARK 229G ET

JDH AH MERCEDES 11E ET
NJW 98S R117 RIBEYE 88X ET

JCS MISS 88X DOMINETTE 5837 ET

CSF BR GOLDREIL 7902 ET

R LEADER 6964
NJW 91H 100W RITA 31Z ET
JDH VICTOR 719T 33Z ET
AH MS 25L RUMBLER 19Z
SHF RIB EYE M326 R117
NJW 9126J DEW DOMINO 98S
BR LANSING 3060
BR GOLDREIL 3029 ET

CED	BW	WW	YW	MILK	SC	REA	MARB	SCHB	ACT BW
7.2	1.8	56	88	30	0.9	0.45	0.08	115	82
									646



GREENS JCS MAKERS MARK 229G ET - SIRE

• 1153 is a powerfully designed individual with tremendous depth and style. He is dark red in color with added pigment, bone, hip and is so fluid when put into motion. His dam is a direct daughter of 7902, the full sister to Gabrielle 5082 the now deceased immortal donor for Barber Ranch. He is an elite individual with an elite pedigree.



LOT 3

3 JCS MAKERS MARK 1109

BULL 3/9/21 REG 44269336 TATTOO 1109 POLLED

BOYD 31Z BLUEPRINT 6153

GREEN JCS MAKERS MARK 229G ET

JDH AH MERCEDES 11E ET

GOLDEN OAK OUTCROSS 18U

DF 18U BRITTANY 907 1405 ET

MF R505 WHITNEY 907 ET

R LEADER 6964
NJW 91H 100W RITA 31Z ET
JDH VICTOR 719T 33Z ET
AH MS 25L RUMBLER 19Z
GOLDEN-OAK FUSION 3S
GOLDEN-OAK 60D MALLORY 15M
MSU BR HALLMARK 25H
MF 3001 REBECCA D03 R505 ET

CE	BW	WW	YW	MILK	SC	REA	MARB	\$CHB	ACT BW	ADD WW
9.8	1.5	60	93	29	1.3	0.49	-0.03	109	78	696



DF 18U BRITTANY 907 1405 ET - DAM OF LOT 3

- You have to admire the depth, power, bone and overall style this calving-ease Makers Mark son offers. He is super sound on his feet and legs with added length. His donor dam has been very instrumental in our program, producing several donors and herd bulls. A very balanced EPD profile comes with this elite herd bull prospect with style.
- Posted a BW ratio of 95.

4 JCS MAKERS MARK 1010



BULL 2/19/21 REG 44268406 TATTOO 1010 POLLED

BOYD 31Z BLUEPRINT 6153

GREEN JCS MAKERS MARK 229G ET

JDH AH MERCEDES 11E ET

BAR S LHF 028 240

JCS 240 DOMINO 9668

JCS 4641 MISS ICON 7258

R LEADER 6964
NJW 91H 100W RITA 31Z ET
JDH VICTOR 719T 33Z ET
AH MS 25L RUMBLER 19Z
CHURCHILL SENSATION 028X
CHURCHILL LADY 078X
JCS ICON 4641
LJR MSU WHITNEY 1827Z

CE	BW	WW	YW	MILK	SC	REA	MARB	\$CHB	ACT BW	ADD WW
6	1.1	59	99	35	1.6	0.39	0.17	126	75	712

- His dam is a direct daughter of the time-tested, calving-ease, with marbling specialist 240. Calving-ease, performance, maternal strength and valued added carcass merit all combined in a very eye-appealing package in this lot.
- Posted a WW ratio of 104.

5 JCS MAKERS MARK 1019

BULL 2/25/21 REG 44268411 TATTOO 1019 POLLED

BOYD 31Z BLUEPRINT 6153

GREEN JCS MAKERS MARK 229G ET

JDH AH MERCEDES 11E ET
H ADVANCE 609 ET

JCS 609 DOMINETTE 9560

JCS 3548 DOMINETTE 6105

R LEADER 6964
NJW 91H 100W RITA 31Z ET
JDH VICTOR 719T 33Z ET
AH MS 25L RUMBLER 19Z
HH ADVANCE 4075B ET
CL 1 DOMINETTE 1169Y 1ET
JCS 5216 DOMINO 3548
JCS MISS POWER UP 917Z

CED	BW	WW	YW	MILK	SC	REA	MARB	\$CHB	ACT BW	ADD WW
6.4	1.6	59	91	28	0.9	0.47	0	111	75	709

- Shape, dimension and power all in a calving-ease package describes this one. Study the turn to his top and shape throughout his lower quarter, along with the added eye-appeal. Bulls of this stature is what makes us excited about Markers Mark.
- Posted a WW ratio of 104.



LOT 5

6 JCS MAKERS MARK 1168

BULL 4/16/21 REG 44268444 TATTOO 1168 POLLED

BOYD 31Z BLUEPRINT 6153

GREEN JCS MAKERS MARK 229G ET

JDH AH MERCEDES 11E ET
BR COPPER 124Y

JCS 124Y MISS COPPER 7308

JCS MISS SHOWTIME 0266



R LEADER 6964
NJW 91H 100W RITA 31Z ET
JDH VICTOR 719T 33Z ET
AH MS 25L RUMBLER 19Z
BR CSF COPPER ET
BR ABIGAIL 8130 ET
JCS SHOWTIME
JCS K602 MARKETTE 3691

CED	BW	WW	YW	MILK	SC	REA	MARB	\$CHB	ACT BW	ADD WW
5.5	1.8	61	94	28	1.1	0.33	0.04	116	80	633

- Study the age here—he's just a middle of April born. This one is wow made with added pigment, short markings and dark red in color. Love the presence this bull displays along with the added hip, top and bone. Study the pedigree, as his dam is a direct daughter of the immortal 124Y.



LOT 6

7 JCS MAKERS MARK 1111

BULL 4/17/21 REG 44268437 TATTOO 1111 POLLED

BOYD 31Z BLUEPRINT 6153

GREEN JCS MAKERS MARK 229G ET

JDH AH MERCEDES 11E ET
UPS DOMINO 5216

JCS 5216 DOMINETTE 3511

JCS FOXY LADY 9147 ET



R LEADER 6964
NJW 91H 100W RITA 31Z ET
JDH VICTOR 719T 33Z ET
AH MS 25L RUMBLER 19Z
UPS DOMINO 3027
UPS MISS MOM 2756
GH NEON 17N
MAT MISS SHOWTIME 690Z

CED	BW	WW	YW	MILK	SC	REA	MARB	\$CHB	ACT BW	ADD WW
10	1.1	53	87	30	1.1	0.44	0.07	112	78	650

- Calving-ease bulls with this kind of look and design are hard to find and even harder to create. A sure fire sleep all night calving-ease bull that stems from proven calving-ease genetics in the herd. Not only will he sire progeny with look, they will have body, shape and added length.
- Posted a BW ratio of 95.



LOT 7



JCS 1321 MARK DOMINO 8341

REF JCS 1321 MARK DOMINO 8341 

BULL 2/16/18 REG 43934356 TATTOO 8341 HORNED {CHB}{DLF,HYF,IEF}

LJS MARK DOMINO 0945
LJS MARK DOMINO 1321
 LJS MS MARK DOMINO 1125
 BAR S LHF 028 240
JCS 240 DOMINETTE 6032
 JCS 0097 DOMINETTE 3472

LJS MARK DOMINO 0709
 LJS MS ADVANCE 0601
 LJS YANKEE 0904
 LJS MS MARK DOMINO 0735
 CHURCHILL SENSATION 028X
 CHURCHILL LADY 078X
 ECR 860 DOMINO 0097 ET
 JCS MISS RAM 0273

CED	BW	WW	YW	MILK	SC	REA	MARB	SCHB	ACT BW	ACT WW
14.6	-2.5	41	61	35	1.4	0.85	0.66	160	68	676

• PROUDLY OWNED WITH FARR CATTLE COMPANY

- 8341 is bull that we sent semen in to be used in the Olsen Test, as we believed he had tremendous breeding potential due to the way he dominated his contemporary. He dominated his contemporary group posting a BW ratio of 85 and a REA ratio of 112. We knew the calving-ease was real and he had carcass merit but wanted to get him proven among other highly regarded sires. Upon the completion of the Olsen Test 8341 surfaced right to the top for calving-ease, carcass merit and efficiency. There were 26 progeny sired by 8341 that posted an average BW ratio of 92 amongst all the other sires. 16 of the 26 were put into the grow yard and ranked #1 in every efficiency category, Avg. DMI, Avg. ADG, F:G and Adj F:G. When harvested again, 8341 progeny dominated their contemporary group posting a Marbling ratio of 112 with 100% of the carcasses grading choice. His progeny was the only group among their contemporary group to grade 100% choice.
- 8341 is a proven calving-ease with value added carcass merit sire. His EPD combination for calving-ease, REA, Marb and CHB are hard to match. He has two sons in this offering, so take advantage of the proven genetic lineage.



LOT 8

8 MAT 8341 DOMINO 1015



BULL 2/20/21 REG 44268409 TATTOO 1015 HORNED

JCS 1321 MARK DOMINO 8341

LJS MARK DOMINO 1321

JCS 240 DOMINETTE 6032

JCS 88X 5847 ET

MAT 5847 DOMINETTE 9585

MAT 0144 DOMINETTE 4629

LJS MARK DOMINO 0945
LJS MS MARK DOMINO 1125
BAR S LHF 028 240
JCS 0097 DOMINETTE 3472
NWJ 98S R117 RIBEYE 88X ET
CSF BR GOLDREIL 7902 ET
HS YANKEE 0144
MAT MISS SHOWTIME 9202

CED	BW	WW	YW	MILK	SC	REA	MARB	\$CHB	ACT BW	ADD WW
6	2	51	76	31	1.2	0.77	0.4	144	75	687

• This is a big rib bull with added volume, hip and bone. Short marked with substance and style, so grab onto the 8341 progeny as they are genetic gems.

9 JCS 8341 DOMINO 1020



BULL 3/1/21 REG 44268414 TATTOO 1020 HORNED

JCS 1321 MARK DOMINO 8341

LJS MARK DOMINO 1321

JCS 240 DOMINETTE 6032

JCS 88X 5847 ET

JCS 5847 DOMINETTE 9587

JCS MISS COOL KAT 3555

LJS MARK DOMINO 0945
LJS MS MARK DOMINO 1125
BAR S LHF 028 240
JCS 0097 DOMINETTE 3472
NWJ 98S R117 RIBEYE 88X ET
CSF BR GOLDREIL 7902 ET
JCS COOL KAT 6928
JCS 365 ROBIN 7043

CED	BW	WW	YW	MILK	SC	REA	MARB	\$CHB	ACT BW	ADD WW
6	1.8	48	75	28	1.1	0.56	0.44	140	77	653



LOT 9

• A ¾ brother to lot 8 that displays maternal strength and value-added carcass merit. 1020 has added length and shape down his top and puts it all together in a super sound package.



LOT 10

10 JCS SPARTAN 1130



BULL 3/18/21 REG 44268440 TATTOO 1130 HORNED

UPS SPARTAN 3310

UPS 3310 SPARTAN 60008

UPS MISS HOMETOWN 4215 ET
JCS HOMEBREW 4616 ET

JCS HOMEBREW 7154

JCS 240 DOMINETTE 5910

UPS SPARTAN 1282
UPS MISS DOMINO 0092
NJW 735 W18 HOMETOWN 10Y ET
UPS JT MISS NEON 7811 1ET
NJW 735 W18 HOMETOWN 10Y ET
JCS MISS KITTY 9200
BAR S LHF 028 240
JCS 0144 DOMINETTE 2453

CED	BW	WW	YW	MILK	SC	REA	MARB	\$CHB	ACT BW	85
3.9	3.4	65	104	28	1.3	0.58	0.2	137	823	

- This next sire group is sired by the resident herd sire, Spartan 60008 that we purchased from Upstream Ranch in Nebraska and wow we have loved the progeny.
- 1130 is stout made from end to end with tremendous body type, hip, top, bone and structure. A do it all bull that just has the look of a herd bull!
- Posted a BW ratio of 117.

11 JCS SPARTAN 1170



BULL 4/22/21 REG 44269331 TATTOO 1170 HORNED

UPS SPARTAN 3310

UPS 3310 SPARTAN 60008

UPS MISS HOMETOWN 4215 ET
BAR S LHF 028 240

JCS 240 DOMINETTE 7233

JCS MISS 0268 KAT 4604

UPS SPARTAN 1282
UPS MISS DOMINO 0092
NJW 735 W18 HOMETOWN 10Y ET
UPS JT MISS NEON 7811 1ET
CHURCHILL SENSATION 028X
CHURCHILL LADY 078X
JCS COOL KAT 0268
JCS MISS SHOWTIME 8086

CED	BW	WW	YW	MILK	SC	REA	MARB	\$CHB	ACT BW	80
5.2	0.9	48	77	23	1.5	0.33	0.28	127	726	

- Here's calving-ease with value added marbling! This sire group is powerful and loaded with style. Dam is direct daughter of the time tested 240.
- Posted a WW ratio of 104.

- Truly a unique individual! Hard to find one with this kind of calving-ease that has the performance and style 1135 possesses. Lots of shape, body, hip and balanced from end to end makes this a unique individual when you combine his genetic profile with his phenotype.
- Posted a BW ratio of 74.



LOT 12

12 JCS SPARTAN 1135



BULL 3/21/21 REG 44268426 TATTOO 1135 HORNED

UPS 3310 SPARTAN 60008

UPS SPARTAN 3310
UPS MISS HOMETOWN 4215 ET
LANGFORDS 2205 ET

JCS MISS DYNAMITE 5873

JCS MISS POWER UP 8145

UPS SPARTAN 1282
UPS MISS DOMINO 0092
NJW 735 W18 HOMETOWN 10Y ET
UPS JT MISS NEON 7811 1ET
BR DM TNT 7010 ET
LH MISS CALGARY 6091
JCS POWER UP 5852
JCS ROBIN 5783

CED	BW	WW	YW	MILK	SC	REA	MARB	\$CHB	ACT BW	60
11.7	-1.8	45	66	20	0.9	0.45	0.19	117	ADDI	690

13 JCS SPARTAN 1055



BULL 4/30/21 REG 44269333 TATTOO 1055 HORNED

UPS 3310 SPARTAN 60008

UPS SPARTAN 3310
UPS MISS HOMETOWN 4215 ET
LANGFORDS 2205 ET

JCS 2205 MISS DYNAMITE 7289

JCS 5216 DOMINETTE 3520

UPS SPARTAN 1282
UPS MISS DOMINO 0092
NJW 735 W18 HOMETOWN 10Y ET
UPS JT MISS NEON 7811 1ET
BR DM TNT 7010 ET
LH MISS CALGARY 6091
UPS DOMINO 5216
JCS MISS ROYALTY 7024

CED	BW	WW	YW	MILK	SC	REA	MARB	\$CHB	ACT BW	84
2.2	3.2	62	97	24	1	0.6	0.1	114	ADDI	742



- This high performing individual was born the last day of April and is something to spectate in person. He is built right from the ground up with added power and style.
- Posted a WW ratio of 106.

LOT 13



LOT 14

14 JCS SPARTAN 1127



BULL	3/15/21	REG 44269320	TATTOO 1127	HORNED
UPS SPARTAN 3310				
UPS 3310 SPARTAN 60008				
UPS MISS HOMETOWN 4215 ET LANGFORDS 2205 ET				
JCS 2205 MISS DYNAMITE 7252				
JCS MISS RAM 3509				

CED	BW	WW	YW	MILK	SC	REA	MARB	\$CHB	ACT BW	ADD WW
3.3	3	57	92	18	1	0.55	0.12	114	80	738

- This is a square hipped bull with added body and eye-appeal. He has a strong EPD profile that displays performance with added meat and muscle.
- Posted a WW ratio of 105.



LOT 15

15 JCS SPARTAN 1137

BULL	3/21/21	REG 44269324	TATTOO 1137	HORNED
UPS SPARTAN 3310				
UPS 3310 SPARTAN 60008				
UPS MISS HOMETOWN 4215 ET JCS ICON 4641				
JCS 4641 MISS ICON 7259				
JCS 5216 DOMINETTE 3529				

CED	BW	WW	YW	MILK	SC	REA	MARB	\$CHB	ACT BW	ADD WW
3.2	2.7	57	87	20	1.5	0.43	0.16	109	79	702

- A red-eyed, well-designed bull that displays added length, top and shape. He is red necked and red to the ground, which only adds to his eye-appeal.
- Posted a BW ratio of 99.



LOT 16

16 JCS 9621 SPARTAN 1176



BULL	4/19/21	REG 44269294	TATTOO 1176	HORNED
UPS 3310 SPARTAN 60008				
JCS SPARTAN 9621				
JCS 240 DOMINETTE 6046 CHURCHILL MARK DOM 691D				
JCS 691D MARK DOMINETTE 8329				
JCS 240 DOMINETTE 6013				

CED	BW	WW	YW	MILK	SC	REA	MARB	\$CHB	ACT BW	ADD WW
4.9	1.7	54	93	31	1.3	0.29	0.23	118	73	718

- Study hard here with this red to the ground, red necked, red-eyed all-around performance bull.
- Posted a BW ratio of 93 and a WW ratio of 103.



LOT 17

17 JCS ROYAL BLEND 1114



BULL 3/9/21 REG 44268433 TATTOO 1114 HORNED

JCS SHOWTIME

JCS ROYAL BLEND 7210 ET

JCS PRECIOUS 0285

BAR S LHF 028 240

JCS 240 DOMINETTE 4654

JCS MISS PEACEMAKER 1351

CHURCHILL ROYAL 112
JCS 184 DOMINETTE 499

JCS COOL KAT 6928
JCS MISS ROYALTY 4720

CHURCHILL SENSATION 028X
CHURCHILL LADY 078X

JCS LH PEACE MAKER 8210 ET
JCS K602 MARKETTE 3691

CED	BW	WW	YW	MILK	SC	REA	MARB	\$CHB	ACT BW	84
-0.4	3.6	54	85	27	1.4	0.39	0.21	118	ADI WW	717



JCS ROYAL BLEND 7210 ET - SIRE OF LOT 17

- This is a special individual that does so many things right from a pedigree, phenotype and EPD standpoint for our operation. This is why we are going to keep a full ½ interest in this bull as we feel his genetic value to us is too hard to replace.
- This big-bodied individual is loaded with performance and eye-appeal. We love his added length, depth of body, hip, structure and presence he displays. His genetic contribution will leave a lasting impact in our operation for years to come.
- Posted a WW ratio of 102.
- **SELLING ½ IN POSSESSION AND ½ SEMEN INTEREST.**



- Royal Blend can sure stamp his progeny! Lot 18 is cool necked, big topped, big hiped, big bodied and just flat out good.
- Posted a WW ratio of 103.

LOT 18

18 JCS ROYAL BLEND 1116



BULL 3/14/21 REG 44269339 TATTOO 1116 HORNED

JCS SHOWTIME

JCS ROYAL BLEND 7210 ET

JCS PRECIOUS 0285
HS YANKEE 0144

JCS 0144 DOMINETTE 4666

JCS MISS PEACE MAKER 1320

CHURCHILL ROYAL 112
JCS 184 DOMINETTE 499
JCS COOL KAT 6928
JCS MISS ROYALTY 4720
CHURCHILL YANKEE ET
HS MS 9126 DOMET 594
JCS LH PEACE MAKER 8210 ET
JCS ROBIN 5783

CED	BW	WW	YW	MILK	SC	REA	MARB	\$CHB	ACT BW	ADJ WW
0.1	3.9	54	85	20	1.2	0.38	0.21	114	85	718

- This is a unique marked, huge bodied Royal Blend son that is packed with performance. 1160 is an easy fleshing bull and his daughters will be the front pasture kind.
- Posted a WW ratio of 115.

19 JCS ROYAL BLEND 1160



BULL 3/29/21 REG 44269361 TATTOO 1160 HORNED

JCS SHOWTIME

JCS ROYAL BLEND 7210 ET

JCS PRECIOUS 0285
BAR S LHF 028 240

JCS 240 DOMINETTE 5906

JCS P606 DOMINETTE 2398 ET

CHURCHILL ROYAL 112
JCS 184 DOMINETTE 499
JCS COOL KAT 6928
JCS MISS ROYALTY 4720
CHURCHILL SENSATION 028X
CHURCHILL LADY 078X
PW VICTOR BOOMER P606
JCS 184 DOMINETTE 483

CED	BW	WW	YW	MILK	SC	REA	MARB	\$CHB	ACT BW	ADJ WW
-3.8	5	61	94	28	1.7	0.48	0.18	115	88	808



LOT 19

20 MAT ROYAL BLEND 1125



BULL 3/15/21 REG 44269352 TATTOO 1125 HORNED

JCS SHOWTIME
JCS ROYAL BLEND 7210 ET
 JCS PRECIOUS 0285
 HS YANKEE 0144
MAT 0144 DOMINETTE 4646
 MAT MISS RAM 0283

CHURCHILL ROYAL 112
 JCS 184 DOMINETTE 499
 JCS COOL KAT 6928
 JCS MISS ROYALTY 4720
 CHURCHILL YANKEE ET
 HS MS 9126 DOMET 594
 CHURCHILL RAM 708T
 MAT ROBIN 7068

CED	BW	WW	YW	MILK	SC	REA	MARB	\$CHB	ACT BW	ADJ WW
7.2	2	47	73	22	1	0.39	0.28	117	72	661

- This is a calving-ease bull with added length of body and style to burn. Dam stems from a long line of productive females that have been very instrumental in our operation.
- Posted a BW ratio of 88.



LOT 20

21 JCS ROYAL BLEND 1121



BULL 3/14/21 REG 44269310 TATTOO 1121 HORNED

JCS SHOWTIME
JCS ROYAL BLEND 7210 ET
 JCS PRECIOUS 0285
 BAR 5 LHF 028 240
JCS 240 DOMINETTE 7161
 JCS NITRO 5848 ET

CHURCHILL ROYAL 112
 JCS 184 DOMINETTE 499
 JCS COOL KAT 6928
 JCS MISS ROYALTY 4720
 CHURCHILL SENSATION 028X
 CHURCHILL LADY 078X
 UPS TCC NITRO 1ET
 JCS 184 DOMINETTE 483

CED	BW	WW	YW	MILK	SC	REA	MARB	\$CHB	ACT BW	ADJ WW
1.6	4.1	60	98	26	1.8	0.51	0.18	114	78	794

- 1121 is big scrotal, high performing individual that does not sacrifice phenotype.
- Posted ratios of 98 for BW and 113 for WW.



LOT 21

22 JCS AC CODIGO 1140



BULL 3/21/21 REG 44269355 TATTOO 1140 HORNED

JCS SHOWTIME
JCS ROYAL BLEND 7210 ET
 JCS PRECIOUS 0285
 BR COPPER 124Y
JCS 124Y MISS COPPER 6068
 JCS 5216 DOMINETTE 3462

CHURCHILL ROYAL 112
 JCS 184 DOMINETTE 499
 JCS COOL KAT 6928
 JCS MISS ROYALTY 4720
 BR CSF COPPER ET
 BR ABIGAIL 8130 ET
 UPS DOMINO 5216
 JCS MISS MONEY 1335

CED	BW	WW	YW	MILK	SC	REA	MARB	\$CHB	ACT BW	ADJ WW
-3.3	5.4	65	100	25	1.3	0.61	0.09	116	89	698

- If you like stout made bulls with added hip and body take a look here! 1140 will produce scale smashing kind.



LOT 23

23 JCS ROYAL BLEND 1150



BULL 3/25/21 REG 44269359 TATTOO 1150 HORNED

JCS SHOWTIME
JCS ROYAL BLEND 7210 ET
 JCS PRECIOUS 0285
 JCS 4743 RAM 0310
JCS 310 DOMINETTE 5852
 JCS MISS PEACEMAKER 1351

CHURCHILL ROYAL 112
 JCS 184 DOMINETTE 499
 JCS COOL KAT 6928
 JCS MISS ROYALTY 4720
 CHURCHILL RAM 708T
 MAT MISS ROYALTY 4743
 JCS LH PEACE MAKER 8210 ET
 JCS K602 MARKETTE 3691

CED	BW	WW	YW	MILK	SC	REA	MARB	\$CHB	ACT BW	ADJ WW
0.7	3.3	48	74	23	1.4	0.37	0.19	115	80	630

- This is a moderate birth individual with strong maternal presence. The daughters will be producers with gorgeous udders.
- Posted a BW ratio of 98.



LOT 24

24 JCS 7314 COPPER 1123

BULL 3/15/21 REG 44269350 TATTOO 1123 HORNED

BR COPPER 124Y
JCS 124Y COPPER 7314
 JCS 310 DOMINETTE 2420
 HS YANKEE 0144
JCS 0144 DOMINETTE 4612
 JCS MISS 510 EXCEL 08077

BR CSF COPPER ET
 BR ABIGAIL 8130 ET
 JCS ICON 7060
 JCS MISS ROYALTY 8072
 CHURCHILL YANKEE ET
 HS MS 9126 DOMET 594
 F L18 EXCEL 510
 JCS MISS ROYALTY 4767

CEW	BW	WW	YW	MILK	SC	REA	MARB	\$CHB	ACT BW
2.2	2.3	57	85	26	1	0.39	0.14	106	75
									795

- One of the impressive bulls in the entire offering. He is stout featured with tremendous depth of body and a big ole hip. You have to appreciate the added length he displays and the way he puts it all together in a very eye-appealing package.
- Posted ratios of 92 for BW and 114 for WW.

25 JCS 7314 COPPER 1110

BULL 3/9/21 REG 44269337 TATTOO 1110 HORNED

BR COPPER 124Y
JCS 124Y COPPER 7314
 JCS 310 DOMINETTE 2420
 JCS 4743 RAM 0310
JCS 310 DOMINETTE 4638
 JCS MISS ROYALTY 7007

BR CSF COPPER ET
 BR ABIGAIL 8130 ET
 JCS ICON 7060
 JCS MISS ROYALTY 8072
 CHURCHILL RAM 708T
 MAT MISS ROYALTY 4743
 CHURCHILL ROYAL 112
 JCS 184 DOMINETTE 413

CEW	BW	WW	YW	MILK	SC	REA	MARB	\$CHB	ACT BW
-2.2	3.8	51	80	26	0.7	0.24	0.11	107	84
									603

- Solid from end to end with a long line of maternal excellence throughout his pedigree.



LOT 26

26 JCS 7314 COPPER 1038

BULL 3/25/21 REG 44269360 TATTOO 1038 HORNED

BR COPPER 124Y
JCS 124Y COPPER 7314
 JCS 310 DOMINETTE 2420
 JCS 5216 DOMINO 3548
JCS 3548 DOMINETTE 6105
 JCS MISS POWER UP 9172

BR CSF COPPER ET
 BR ABIGAIL 8130 ET
 JCS ICON 7060
 JCS MISS ROYALTY 8072
 UPS DOMINO 5216
 JCS MISS ROYALTY 4720
 JCS POWER UP 5852
 JCS 184 DOMINET 448

CED	BW	WW	YW	MILK	SC	REA	MARB	\$CHB	ACT BW 90
-6	4.7	57	87	24	0.6	0.4	-0.02	98	678

• Big time potential lies here! One of the favorites of many who have visited the ranch to date. He is unique in his marking as he has black pigment around his eye. We love the build and skeleton design 1038 possesses. He is red necked, red to the ground, flawless on the profile and equipped with added shape and depth. Big time herd bull alert.

27 JCS 7314 COPPER 1138



BULL 3/21/21 REG 44268441 TATTOO 1138 HORNED

BR COPPER 124Y
JCS 124Y COPPER 7314
 JCS 310 DOMINETTE 2420
 BAR S LHF 028 240
JCS 240 DOMINETTE 7173
 JCS MISS 2205 DYNAMITE 5935

BR CSF COPPER ET
 BR ABIGAIL 8130 ET
 JCS ICON 7060
 JCS MISS ROYALTY 8072
 CHURCHILL SENSATION 028X
 CHURCHILL LADY 078X
 LANGFORDS 2205 ET
 WALKER MISS U144 939 287

CED	BW	WW	YW	MILK	SC	REA	MARB	\$CHB	ACT BW 88
-5.8	5.3	62	101	33	1.3	0.51	0.18	122	726

• You'll find this one stout in his design with tremendous depth and added hip, plus oaded with performance and value-added REA.
 • Posted a WW ratio of 103.



LOT 28

28 JCS 7314 COPPER 1124

BULL 3/15/21 REG 44269351 TATTOO 1124 HORNED

BR COPPER 124Y

JCS 124Y COPPER 7314

JCS 310 DOMINETTE 2420

JCS 5216 DOMINO 3548

JCS 3548 DOMINETTE 6103

JCS 0144 DOMINETTE 2448

BR CSF COPPER ET
BR ABIGAIL 8130 ET
JCS ICON 7060
JCS MISS ROYALTY 8072
UPS DOMINO 5216
JCS MISS ROYALTY 4720
HS YANKEE 0144
JCS MISS POWER UP 9157

CED	BW	WW	YW	MILK	SC	REA	MARB	\$CHB	ACT BW	80
2.2	2.6	58	88	28	0.8	0.34	0.08	101	ADI WW	781

- If you like your bulls stout, long and good, then take a look at this overall performance individual. He is sound in structure, with excellent feet and legs and will without question produce top dollar grabbing feeder calves.
- Posted ratio of 99 for BW and 111 for WW.



• A dark red, short marked well-designed bull that offers added depth and shape describes this lot. He stems back to the foundation donor, Chelsea, the direct daughter of 146.



LOT 29

29 JCS 7314 COPPER 1128

BULL	3/15/21	REG 44269321	TATTOO 1128	HORNED
BR COPPER 124Y		BR CSF COPPER ET BR ABIGAIL 8130 ET		
JCS 124Y COPPER 7314		JCS ICON 7060 JCS MISS ROYALTY 8072		
JCS 310 DOMINETTE 2420 LANGFORDS 2205 ET		BR DM TNT 7010 ET LH MISS CALGARY 6091		
JCS 2205 MISS DYNAMITE 7299		DM BR L1 DOMINO 146 MAT MISS ROYALTY 4743		
JCS 146 CHELSEA 8094 ET				

CED	BW	WW	YW	MILK	SC	REA	MARB	\$CHB	ACT BW	79
-1.8	3.3	56	87	22	0.7	0.35	0.12	103	680	

30 JCS 7314 COPPER 1164

BULL	4/3/21	REG 44269363	TATTOO 1164	HORNED
BR COPPER 124Y		BR CSF COPPER ET BR ABIGAIL 8130 ET		
JCS 124Y COPPER 7314		JCS ICON 7060 JCS MISS ROYALTY 8072		
JCS 310 DOMINETTE 2420 JCS COOL KAT 0268		JCS COOL KAT 6928 JCS 184 DOMINETTE 483		
JCS MISS 0268 KAT 4604		JCS SHOWTIME JCS 6227 MARKETTE 387		
JCS MISS SHOWTIME 8086				

CED	BW	WW	YW	MILK	SC	REA	MARB	\$CHB	ACT BW	70
2.2	1.6	44	67	19	0.6	0.3	0.19	110	616	



• Just an April that is built ultra-cool. We love the length and shape he displays in such an eye-appealing package. 1164 stems from some of our all-time favorite herd bulls Cool Kat, Showtime and 124Y.
• Posted a BW ratio of 86.

LOT 30



LOT 31

31 JCS 8463 DOMINO 1036



BULL 3/23/21 REG 44268453 TATTOO 1036 POLLED

BAR S LHF 028 240

JCS 240 DOMINO 8463

JCS 365 DOMINETTE 6883

JCS COOL KAT 6928

JCS MISS KITTY 8413 ET

MM BRIELLE 1105 ET

CHURCHILL SENSATION 028X
CHURCHILL LADY 078X
F ROBIN HOOD 365
JCS 6227 MARKETTE 464
CJH L1 DOMINO 1106
JCS MISS ROYALTY 3676
UPS TCC NITRO 1ET
BR CSF BRIELLE 8052 ET

CED	BW	WW	YW	MILK	SC	REA	MARB	\$CHB	ACT BW	ADD WW
3.1	3	47	82	29	1.6	0.16	0.2	120	74	732

- 1036 is dark cherry red with big red eyes and just flat out good. Note he is big boned, big scrotal and loaded with performance. Study the pedigree, as he stems back to the immortal 8052.
- Posted ratios of 95 for BW and 105 for WW.

32 JCS 8463 DOMINO 1045



BULL 4/1/21 REG 44269287 TATTOO 1045 HORNED {DLF,HYF,IEF,MSUDF}

BAR S LHF 028 240

JCS 240 DOMINO 8463

JCS 365 DOMINETTE 6883

JCS 88X 5847 ET

JCS 5847 DOMINETTE 8344

JCS 240 SENSATION 4586

CHURCHILL SENSATION 028X
CHURCHILL LADY 078X
F ROBIN HOOD 365
JCS 6227 MARKETTE 464
NJW 98S R117 RIBEYE 88X ET
CSF BR GOLDREIL 7902 ET
BAR S LHF 028 240
JCS 9205 RAM 1354

CED	BW	WW	YW	MILK	SC	REA	MARB	\$CHB	ACT BW	ADD WW
-1.2	3.9	48	86	31	1.4	0.31	0.3	137	83	646

- Well designed with valued added carcass merit and maternal strength is how to describe this one. He is a double bred Sensation 028X that will produce gorgeous daughters in production.

- Big boned big bodied individual that offers a little genetic diversity on the bottom side of his pedigree. He has performance in an attractive package.
- Posted a WW ratio of 104.



LOT 33

33 JCS 8463 DOMINO 1029



BULL 3/16/21 REG 44269279 TATTOO 1029 POLLED

BAR S LHF 028 240

JCS 240 DOMINO 8463

JCS 365 DOMINETTE 6883

JCS CURRENCY 6091 ET

JCS 6091 DOMINETTE 8490

GRANDVIEW CMR MS 424 W014 ET

CHURCHILL SENSATION 028X
CHURCHILL LADY 078X

F ROBIN HOOD 365
JCS 6227 MARKETTE 464

BR CURRENCY 8144 ET
JCS MISS ROYALTY 4720

ALH 034 PLATO DOM 0424
RU 20X KAY 46K

CED	BW	WW	YW	MILK	SC	REA	MARB	\$CHB	ACT BW	ACT WW
-2.3	4.3	56	93	30	1.3	0.3	0.18	121	84	729

34 JCS 8463 DOMINO 1028



BULL 3/16/21 REG 44269278 TATTOO 1028 HORNED

BAR S LHF 028 240

JCS 240 DOMINO 8463

JCS 365 DOMINETTE 6883

JCS COPPER 5891

JCS 5891 MISS COPPER 8376

JCS 240 DOMINETTE 5910

CHURCHILL SENSATION 028X
CHURCHILL LADY 078X

F ROBIN HOOD 365
JCS 6227 MARKETTE 464

BR CSF COPPER ET
JCS MISS COOL KAT 1367

BAR S LHF 028 240
JCS 0144 DOMINETTE 2453

CED	BW	WW	YW	MILK	SC	REA	MARB	\$CHB	ACT BW	ACT WW
3	3	49	91	33	1.7	0.17	0.39	140	78	637



- Looking to add bone, body and style to a calf crop—then take a hard look here. A double bred 240 that offers moderate birth and maternal strength.

LOT 34



LOT 35

35 JCS 8463 DOMINO 1024



BULL 3/7/21 REG 44269275 TATTOO 1024 HORNED

BAR S LHF 028 240
JCS 240 DOMINO 8463
 JCS 365 DOMINETTE 6883
 JCS 88X 5847 ET
JCS 5847 DOMINETTE 8428
 JCS 5216 DOMINETTE 3520

CHURCHILL SENSATION 028X
 CHURCHILL LADY 078X
 F ROBIN HOOD 365
 JCS 6227 MARKETTE 464
 NUW 98S R117 RIBEYE 88X ET
 CSF BR GOLDREIL 7902 ET
 UPS DOMINO 5216
 JCS MISS ROYALTY 7024

CED	BW	WW	YW	MILK	SC	REA	MARB	\$CHB	ACT BW	ADJ WW
3.7	2.9	42	77	27	1.4	0.28	0.25	122	74	661

- A big boned bull, who is sound in structure and equipped with a great look. You have to appreciate the balance and shape this powerfully constructed bull displays.
- Posted a BW ratio of 95.



LOT 36

36 MAT 8463 DOMINO 1022



BULL 3/1/21 REG 44268448 TATTOO 1022 HORNED

BAR S LHF 028 240
JCS 240 DOMINO 8463
 JCS 365 DOMINETTE 6883
 JCS CURRENCY 6091 ET
MAT 6091 DOMINETTE 8441
 MAT 0144 DOMINETTE 4676

CHURCHILL SENSATION 028X
 CHURCHILL LADY 078X
 F ROBIN HOOD 365
 JCS 6227 MARKETTE 464
 BR CURRENCY 8144 ET
 JCS MISS ROYALTY 4720
 JCS FULL TANK 2392
 SNOWSHOE 64R LADY SPORT X03

CED	BW	WW	YW	MILK	SC	REA	MARB	\$CHB	ACT BW	ADJ WW
-0.4	4.4	52	88	29	1.3	0.33	0.15	126	78	702

- Here's a dark red bull with added length, added bone and large scrotal.

37 JCS KEJ 8463 DOMINO 1037



BULL 3/25/21 REG 44269283 TATTOO 1037 HORNED

BAR S LHF 028 240
JCS 240 DOMINO 8463
 JCS 365 DOMINETTE 6883
 BR CURRENCY 8144 ET
JCS MISS CURRENCY 8414 ET
 MAT MISS ROYALTY 4743

CHURCHILL SENSATION 028X
 CHURCHILL LADY 078X
 F ROBIN HOOD 365
 JCS 6227 MARKETTE 464
 DM BR SOONER
 BR GABRIELLE 5082
 CHURCHILL ROYAL 112
 JCS 6227 MARKETTE 467

CED	BW	WW	YW	MILK	SC	REA	MARB	\$CHB	ACT BW	ADJ WW
-5	6.3	59	105	31	1.5	0.27	0.2	131	92	702

- Lot 37 is a performance bred individual, whose dam stems from out ET program. Performance with value added marbling can be found here.

38 JCS 240 DOMINO 1107



BULL 3/7/21 REG 44268432 TATTOO 1107 HORNED

CHURCHILL SENSATION 028X
BAR S LHF 028 240
 CHURCHILL LADY 078X
 H5 YANKEE 0144
JCS 0144 DOMINETTE 2453
 JCS LADY RAM 9210

UPS DOMINO 3027
 CHURCHILL LADY 7202T ET
 CHURCHILL YANKEE ET
 CHURCHILL LADY 7210T
 CHURCHILL YANKEE ET
 H5 MS 9126 DOMET 594
 CHURCHILL RAM 708T
 JCS MISS ROYALTY 6897

CED	BW	WW	YW	MILK	SC	REA	MARB	\$CHB	ACT BW	ADJ WW
10.3	0.5	43	73	37	1.2	0.29	0.46	138	70	658

- The only direct son of the time tested, highly proven calving ease sire, 240. 240 has 369 reported progeny with an average BW ratio of 98.4. This lot provides sure fire calving-ease with elite marbling genetics.
- Posted a BW ratio of 86.

39 JCS 5817 DOMINO 1025

BULL 3/7/21 REG 44268449 TATTOO 1025 HORNED

JCS RAM 9195

JCS 9195 DOMINO 5817

JCS 0144 DOMINETTE 2448

JCS COOL KAT 6928

JCS MISS KITTY 8401 ET

JCS MISS ROYALTY 4751

CHURCHILL RAM 708T
JCS MISS ROYALTY 6934

HS YANKEE 0144
JCS MISS POWER UP 9157

CJH L1 DOMINO 1106
JCS MISS ROYALTY 3676

CHURCHILL ROYAL 112
JCS 184 DOMINET 453

CED	BW	WW	YW	MILK	SC	REA	MARB	\$CHB	ACT BW	ADD WW
1	3.4	50	81	24	1	0.34	0.04	110	88	690

- Study the overall design, as 1025 combines body, hip, bone, mass in a super attractive package. 1025 will put the look into your calf crop.



LOT 39

40 JCS 5817 DOMINO 1044

BULL 3/27/21 REG 44268454 TATTOO 1044 HORNED

JCS RAM 9195

JCS 9195 DOMINO 5817

JCS 0144 DOMINETTE 2448

JCS 88X 5847 ET

JCS 5847 DOMINETTE 8457

BR MISTI 2067

CHURCHILL RAM 708T
JCS MISS ROYALTY 6934

HS YANKEE 0144
JCS MISS POWER UP 9157

NJW 98S R117 RIBEYE 88X ET
CSF BR GOLDREIL 7902 ET

BR CSF COPPER ET
DM BR MISTI 7058 ET

CED	BW	WW	YW	MILK	SC	REA	MARB	\$CHB	ACT BW	ADD WW
6.7	1.5	46	75	22	0.7	0.54	0.16	125	73	635

- 1044 is a well-designed calving-ease bull that will add phenotype to your calf crop.
- Posted a BW ratio of 94.



LOT 40

41 JCS 5817 DOMINO 1049

BULL 4/8/21 REG 44268456 TATTOO 1049 POLLED

JCS RAM 9195

JCS 9195 DOMINO 5817

JCS 0144 DOMINETTE 2448

BR BELLE AIR 6011

JCS MISS BELLE AIR 8455 ET

JCS 5216 DOMINETTE 3464

CHURCHILL RAM 708T
JCS MISS ROYALTY 6934

HS YANKEE 0144
JCS MISS POWER UP 9157

BAR S LHF 028 240
BR BELLE 4082 ET

UPS DOMINO 5216
JCS CLASSY LADY 1324

CED	BW	WW	YW	MILK	SC	REA	MARB	\$CHB	ACT BW	ADD WW
10	-0.4	52	83	31	1.4	0.44	0.27	129	68	707

- Calving-ease with style and value-added carcass merit is offered here. Dam is a direct daughter of the ever-popular, Bell Air 6011.
- Posted ratios of 87 for BW and 101 for WW.



LOT 41



LOT 42

42 JCS GUNSMOKE 1126



BULL	3/15/21	REG 44269808	TATTOO 1126	HORNED
JCS 88X 5847 ET				
JCS GUNSMOKE 9580				
JCS 5216 DOMINETTE 3464				
H5 YANKEE 0144				
JCS 0144 DOMINETTE 6065				
JCS MISS CURRENCY 3483 ET				
NJW 98S R117 RIBEYE 88X ET				
CSF BR GOLDREIL 7902 ET				
UPS DOMINO 5216				
JCS CLASSY LADY 1324				
CHURCHILL YANKEE ET				
H5 MS 9126 DOMET 594				
BR CURRENCY 8144 ET				
JCS 184 DOMINETTE 483				

CED	BW	WW	YW	MILK	SC	REA	MARB	\$CHB	ACT BW	ADD WW
7.2	2.3	51	80	23	0.9	0.56	0.23	127	78	682

- 1126 is a well-balanced calving-ease bull that displays added muscle and shape.
- Posted a BW ratio of 97.



LOT 43

43 JCS AC GUNSMOKE 1155



BULL	4/3/21	REG 44269819	TATTOO 1155	HORNED
JCS 88X 5847 ET				
JCS GUNSMOKE 9580				
JCS 5216 DOMINETTE 3464				
BAR S LHF 028 240				
AC 240 DOMINETTE 7153				
JCS 3460 88X DOMINETTE 5927				
NJW 98S R117 RIBEYE 88X ET				
CSF BR GOLDREIL 7902 ET				
UPS DOMINO 5216				
JCS CLASSY LADY 1324				
CHURCHILL SENSATION 028X				
CHURCHILL LADY 078X				
JCS 88X DOMINO 3460				
JCS 5216 DOMINETTE 3511				

CED	BW	WW	YW	MILK	SC	REA	MARB	\$CHB	ACT BW	ADD WW
5.8	2.4	53	86	33	1.3	0.47	0.28	134	75	702

- This is a heavily pigmented bull with a big sweeping rib cage and added phenotype. His individual performance and EPD profile show that he offers calving-ease.
- Posted a BW ratio of 94.



LOT 44

44 JCS GUNSMOKE 1167



BULL	4/16/21	REG 44269809	TATTOO 1167	HORNED
JCS 88X 5847 ET				
JCS GUNSMOKE 9580				
JCS 5216 DOMINETTE 3464				
JCS COPPER 5841				
JCS MISS COPPER TIME 7263				
JCS MISS ROYAL KAT 1315				
NJW 98S R117 RIBEYE 88X ET				
CSF BR GOLDREIL 7902 ET				
UPS DOMINO 5216				
JCS CLASSY LADY 1324				
BR CSF COPPER ET				
JCS MISS SHOWTIME				
F 552 DOMINO 582				
JCS 582 DOMINET 7040				

CED	BW	WW	YW	MILK	SC	REA	MARB	\$CHB	ACT BW	ADD WW
-1.6	4.8	62	94	23	1	0.44	0.12	119	89	675

- Dark red, red necked and red to the ground adds to the eye-appeal of this strong maternal bred bull.

45 JCS GUNSMOKE 1149

BULL 3/23/21 REG 44269805 TATTOO 1149 HORNED

JCS 88X 5847 ET
 JCS 5216 DOMINETTE 3464
 JCS SHOWTIME
 JCS 184 DOMINETTE 483

NJW 98S R117 RIBEYE 88X ET
 CSF BR GOLDREIL 7902 ET
 UPS DOMINO 5216
 JCS CLASSY LADY 1324
 CHURCHILL ROYAL 112
 JCS 184 DOMINETTE 499
 JCS 230 DOMINO 184
 JCS 171 MS POWER 108

CED	BW	WW	YW	MILK	SC	REA	MARB	\$CHB	ACT BW	ADD WW
-0.5	3.7	52	81	23	1.1	0.36	0.07	106	88	666

- This one is big hipped with a great look and power to boot. Keep all the daughters, as they will be the cowboy's kind.

46 JCS GUNSMOKE 1053

BULL 5/6/21 REG 44269813 TATTOO 1053 HORNED

JCS 88X 5847 ET
 JCS 5216 DOMINETTE 3464
 H5 YANKEE 0144
 JCS 0144 DOMINETTE 6109
 JCS 310 DOMINETTE 2420

NJW 98S R117 RIBEYE 88X ET
 CSF BR GOLDREIL 7902 ET
 UPS DOMINO 5216
 JCS CLASSY LADY 1324
 CHURCHILL YANKEE ET
 H5 MS 9126 DOMET 594
 JCS ICON 7060
 JCS MISS ROYALTY 8072

CED	BW	WW	YW	MILK	SC	REA	MARB	\$CHB	ACT BW	ADD WW
3.6	2.3	52	86	26	1.2	0.46	0.21	120	83	710

- This is a moderate birth bull that brings added maternal presence and value-added REA to the table.
- Posted a BW ratio of 99.

47 JCS 9543 DOMINO 1112

BULL 3/9/21 REG 44268439 TATTOO 1112 HORNED

JCS 88X 5847 ET
 JCS 5847 DOMINO 9543
 JCS 310 DOMINETTE 2420
 BAR S LHF 028 240
 JCS 240 DOMINETTE 6006
 JCS 146 CHELSEA 4595 ET

NJW 98S R117 RIBEYE 88X ET
 CSF BR GOLDREIL 7902 ET
 JCS ICON 7060
 JCS MISS ROYALTY 8072
 CHURCHILL SENSATION 028X
 CHURCHILL LADY 078X
 DM BR L1 DOMINO 146
 MAT MISS ROYALTY 4743

CED	BW	WW	YW	MILK	SC	REA	MARB	\$CHB	ACT BW	ADD WW
1.3	1.9	39	68	27	1.1	0.26	0.16	110	78	607

- Well balanced on the profile with a killer look is how we describe this one. He is a moderate birth that bull that stems from a power packed pedigree.
- Posted a BW ratio of 97.



LOT 47

48 JCS 9543 DOMINO 1154

BULL 3/30/21 REG 44268430 TATTOO 1154 HORNED

JCS 88X 5847 ET
 JCS 5847 DOMINO 9543
 JCS 310 DOMINETTE 2420
 JCS 5216 DOMINO 3548
 JCS 3548 DOMINETTE 6094
 JCS MISS PEACEMAKER 1351

NJW 98S R117 RIBEYE 88X ET
 CSF BR GOLDREIL 7902 ET
 JCS ICON 7060
 JCS MISS ROYALTY 8072
 UPS DOMINO 5216
 JCS MISS ROYALTY 4720
 JCS LH PEACE MAKER 8210 ET
 JCS K602 MARKETTE 3691

CED	BW	WW	YW	MILK	SC	REA	MARB	\$CHB	ACT BW	ADD WW
-1.9	4.3	58	92	23	1.1	0.51	0.07	121	85	688

- Here's a high growth bull with added hip and phenotype and is short marked with added pigment.



LOT 48



LOT 49

49 JCS 9543 DOMINO 1129

BULL 3/15/21 REG 44268434 TATTOO 1129 HORNED

JCS 88X 5847 ET

JCS 5847 DOMINO 9543

JCS 310 DOMINETTE 2420
UPS DOMINO 5216

JCS 5216 DOMINETTE 3550

JCS MISS ROYALTY 6909

NJW 98S R117 RIBEYE 88X ET
CSF BR GOLDBREIL 7902 ET
JCS ICON 7060
JCS MISS ROYALTY 8072
UPS DOMINO 3027
UPS MISS MOM 2756
CHURCHILL ROYAL 112
JCS CJ DOMINET 615

CED	BW	WW	YW	MILK	SC	REA	MARB	\$CHB	ACT BW
0.9	3.4	49	77	26	1.2	0.43	0.05	110	80
									ADD WW
									695

- This one stems from a time-tested dam that has produced year after year. Lot 49 is well-designed individual with shape and large scrotal.
- Posted a BW ratio of 98.



LOT 50

50 JCS 8442 DOMINO 1117

BULL 3/14/21 REG 44269340 TATTOO 1117 HORNED

MCKY LUCCHESI 6481 ET

JCS AC LIMITED EDITION 8442

JCS 3460 88X DOMINETTE 5927
BAR S LHF 028 240

JCS MISS 240 SENSATION 4576

JCS MISS ICON 2409

CRR ABOUT TIME 743
JCS TATER TOT 3560
JCS 88X DOMINO 3460
JCS 5216 DOMINETTE 3511
CHURCHILL SENSATION 028X
CHURCHILL LADY 078X
JCS ICON 7060
JCS ROBIN 6893

CED	BW	WW	YW	MILK	SC	REA	MARB	\$CHB	ACT BW
-0.1	2.9	56	94	29	1.6	0.49	0.11	112	85
									ADD WW
									746

- Note this high performance individual with style, shape, added length and pigment.
- Posted a WW ratio of 107



LOT 51

51 JCS 3548 DOMINO 1004

BULL 2/14/21 REG 44268400 TATTOO 1004 HORNED

UPS DOMINO 5216

JCS 5216 DOMINO 3548

JCS MISS ROYALTY 4720
BAR S LHF 028 240

JCS 240 DOMINETTE 9629

JCS MISS 510 EXCEL 08077

UPS DOMINO 3027
UPS MISS MOM 2756
CHURCHILL ROYAL 112
JCS 184 DOMINET 447
CHURCHILL SENSATION 028X
CHURCHILL LADY 078X
F L18 EXCEL 510
JCS MISS ROYALTY 4767

CED	BW	WW	YW	MILK	SC	REA	MARB	\$CHB	ACT BW
4.8	2.2	55	85	33	1.3	0.33	0.09	95	73
									ADD WW
									776

- Study the strong performance in this well-balanced, well-designed individual. 1004 is the first calf out of the performance driven 9629 that posted ratio of 97 for BW, 103 for WW, 106 for YW and 121 for IMF.
- Posted a WW ratio of 113.

REF A GREEN JCS MAKERS MARK 229G ET

BULL 2/18/19 REG 44042074 TATTOO 229G POLLED {DLF,HYF,IEF,MSUDF}

R LEADER 6964

BOYD 31Z BLUEPRINT 6153

NJW 91H 100W RITA 31Z ET

JDH VICTOR 719T 33Z ET

JDH AH MERCEDES 11E ET

AH MS 25L RUMBLER 19Z

HYALITE ON TARGET 936
R MISS REVOLUTION 1009
NJW 735 M326 TRUST 100W ET
REMITALL RITA 91H
TH 122 711 VICTOR 719T
JDH MS YANKEE 11U ET
BAR JZ RUMBLE 525X
AH JDH MS 25L WRANGLER 34X ET

CED	BW	WW	YW	MILK	SC	REA	MARB	\$CHB	ACT BW	ADJ WW
14.8	-0.7	62	101	34	1.4	0.55	-0.03	133	78	757

- Owned with Steven Green and GKB Cattle.
- Semen will on be offered at special sales. Certificates \$75



GREENS JCS MAKERS MARK 229G ET - REFERENCE SIRE A

REF B JCS 1321 MARK DOMINO 8341

BULL 2/16/18 REG 43934356 TATTOO 8341 HORNED {CHB}{DLF,HYF,IEF}

LJS MARK DOMINO 0945

LJS MARK DOMINO 1321

LJS MS MARK DOMINO 1125

BAR S LHF 028 240

JCS 240 DOMINETTE 6032

JCS 0097 DOMINETTE 3472

LJS MARK DOMINO 0709
LJS MS ADVANCE 0601
LJS YANKEE 0904
LJS MS MARK DOMINO 0735
CHURCHILL SENSATION 028X
CHURCHILL LADY 078X
ECR 860 DOMINO 0097 ET
JCS MISS RAM 0273

CED	BW	WW	YW	MILK	SC	REA	MARB	\$CHB	ACT BW	ADJ WW
14.6	-2.5	41	61	35	1.4	0.85	0.66	160	68	676

- Owned with Farr Cattle Company
- Semen: \$50 / Certs: \$75



JCS 1321 MARK DOMINO 8341 - REFERENCE SIRE B

REF C UPS 3310 SPARTAN 60008

BULL 10/21/16 REG 43785820 TATTOO 60008 HORNED {DLF,HYF,IEF,MDF}

UPS SPARTAN 1282

UPS SPARTAN 3310

UPS MISS DOMINO 0092

NJW 735 W18 HOMETOWN 10Y ET

UPS MISS HOMETOWN 4215 ET

UPS JT MISS NEON 7811 1ET

DS SPARTAN 8008
UPS MISS SAGA 9290 1ET
UPS DOMINO 5216
UPS MISS DOMINO 8237
SHF WONDER M326 W18 ET
NJW P606 72N DAYDREAM 735
GH NEON 17N
LCCTWO TIMIN 438 ET

CED	BW	WW	YW	MILK	SC	REA	MARB	\$CHB	ACT BW	ADJ WW
6.1	0	54	84	18	1.3	0.55	0.33	133	65	573

- Semen: \$50 / Certs: \$75



UPS 3310 SPARTAN 60008 - REFERENCE SIRE C

REF D JCS ROYAL BLEND 7210 ET

BULL 3/13/17 REG 43823918 TATTOO 7210 HORNED {DLF,HYF,IEF,MSUDF}

CHURCHILL ROYAL 112

JCS SHOWTIME

JCS 184 DOMINETTE 499

JCS COOL KAT 6928

JCS PRECIOUS 0285

JCS MISS ROYALTY 4720

CHURCHILL ROYAL 7117
CHURCHILL LADY 718
JCS 230 DOMINO 184
JCS ARAP MAIDEN 252
CJH L1 DOMINO 1106
JCS MISS ROYALTY 3676
CHURCHILL ROYAL 112
JCS 184 DOMINET 447

CED	BW	WW	YW	MILK	SC	REA	MARB	\$CHB	ACT BW	ADJ WW
-0.9	4.7	59	88	19	1.6	0.49	0.11	106	88	856

- Recently deceased. Semen will only be offered at special sales. Non-Certificate.
- Owned with GKB Cattle



JCS ROYAL BLEND 7210 ET - REFERENCE SIRE D



JCS 124Y COPPER 7314 - REFERENCE SIRE E



BAR S LHF 028 240 - REFERENCE SIRE F



JCS MISS BUTTERCUP 7296 - FULL SIB TO GUNSMOKE 9580



JCS AC LIMITED EDITION 8442 - REFERENCE SIRE H

REF E JCS 124Y COPPER 7314



BULL	6/1/17	REG 43823800	TATTOO 7314	HORNED	{DLF,HYF,IEF}
BR CSF COPPER ET					DM BR SOONER
BR ABIGAIL 8130 ET					BR GABRIELLE 5082
JCS ICON 7060					DM BR SOONER
JCS MISS ROYALTY 4720					BR GABRIELLE 5082
JCS MISS ROYALTY 8072					F 552 DOMINO 582
					JCS MISS ROYALTY 4720
					CHURCHILL ROYAL 112
					JCS 184 DOMINETTE 483

CED	BW	WW	YW	MILK	SC	REA	MARB	\$CHB	ACT BW	ADJ WW
-4.7	3.5	59	87	26	0.6	0.26	0.13	102	78	691

• Semen: \$50 / Certs: \$75

REF F BAR S LHF 028 240



BULL	1/22/12	REG 43287538	TATTOO 240	HORNED	{CHB}{DLF,HYF,IEF}
UPS DOMINO 3027					CL 1 DOMINO 9126J 1ET
CHURCHILL LADY 7202T ET					UPS MISS DIAMOND 1353
CHURCHILL YANKEE ET					GH RAMBO 279R
CHURCHILL LADY 7210T					CL 1 DOMINETTE 301N
					GH NEON 17N
					CHURCHILL LADY 202
					CJH HARLAND 408
					CHURCHILL LADY 768

CED	BW	WW	YW	MILK	SC	REA	MARB	\$CHB	ACT BW	ADJ WW
7.1	1.1	48	84	44	2.1	0.23	0.55	146	68	713

• Owned with GKB Cattle and Stephens & Loehr Herefords.
• Semen: \$50 / Certs: \$75

REF G JCS GUNSMOKE 9580



BULL	3/16/19	REG 44036265	TATTOO 9580	HORNED	{DLF,HYF,IEF,MSUDF}
NJW 98S R117 RIBEYE 88X ET					SHF RIB EYE M326 R117
CSF BR GOLDREIL 7902 ET					NJW 9126J DEW DOMINO 98S
UPS DOMINO 5216					BR LANSING 3060
JCS CLASSY LADY 1324					BR GOLDRIEL 3029 ET
					UPS DOMINO 3027
					UPS MISS MOM 2756
					JCS ICON 7060
					JCS MISS ROYALTY 6870

CED	BW	WW	YW	MILK	SC	REA	MARB	\$CHB	ACT BW	ADJ WW
5.8	2.6	57	90	25	1	0.61	0.18	129	76	652

• Semen: \$50 / Certs: \$75

REF H JCS AC LIMITED EDITION 8442



BULL	3/14/18	REG 43936719	TATTOO 8442	HORNED	{DLF,HYF,IEF,MSUDF,MDF}
CRR ABOUT TIME 743					THM DURANGO 4037
JCS TATER TOT 3560					CRR D03 CASSIE 206
JCS 88X DOMINO 3460					JCS COOL KAT 6928
JCS 5216 DOMINETTE 3511					JCS MISS 510 EXCELLA 9201
					NJW 98S R117 RIBEYE 88X ET
					JCS MISS ROYAL KAT 1321
					UPS DOMINO 5216
					JCS FOX Y LADY 9147 ET

CED	BW	WW	YW	MILK	SC	REA	MARB	\$CHB	ACT BW	ADJ WW
-4.1	4.6	62	109	30	2.1	0.49	0.03	108	80	812

• Semen: \$50 / Certs: \$75



JCS HONDO 9612 - REFERENCE SIRE I

REF I JCS HONDO 9612



BULL 5/3/19 REG 44036276 TATTOO 9612 HORNED {DLF,HYF,IEF,MSUDF}

JCS 88X 5847 ET

NJW 98S R117 RIBEYE 88X ET

CSF BR GOLDREIL 7902 ET
BAR S LHF 028 240

JCS MISS 240 SENSATION 4599

JCS CLASSY LADY 1324

SHF RIB EYE M326 R117
NJW 9126J DEW DOMINO 98S
BR LANSING 3060
BR GOLDRIEL 3029 ET
CHURCHILL SENSATION 028X
CHURCHILL LADY 078X
JCS ICON 7060
JCS MISS ROYALTY 6870

CED	BW	WW	YW	MILK	SC	REA	MARB	\$CHB	ACT BW	80
3.3	2.8	47	75	30	1.1	0.66	0.15	127	80	787

- A young sire that we have an incredible amount of excitement about! His first calves have hit the ground and they are even better than we hoped!
- t's not everyday you can find a horned bull with this much true muscle dimension throughout, actual rib shape, and superb feet that can still get out and go, and has the look and structure to go with it!
- A 3/4 brother to Gunsmoke and Buttercup - his pedigree is stacked!
- A crowd favorite when campaigning him in the show ring, especially as a coming 3 year old!
- The computer doesn't show his performance, but he weighed 2,541 on show day in Denver at 32 months old!
- 2021 Supreme Champion Arizona National Livestock Show
- 2022 National Western Stock Show Division Champion
- 2021 Cattlemen's Congress Division Champion
- Semen: \$50 / Certs: \$75

Notes

Thank you!
DEMAND THE BRAND
ANNUAL BULL SALE
THE COPELAND & SONS FAMILY



HEREFORD



ADVANTAGE

Visit

HerefordAdvantage.com

to get started today!



An industry-changing program from the American Hereford Association and IMI Global to verify and add value to Hereford-influenced feeder cattle with superior genetics, health and management.

REQUIREMENTS

- **Source & Age verification**
- **Genetic merit**
 - Minimum of 50% Hereford genetics
 - Bull battery ranking in top 50% of breed for \$CHB index (bull battery average)
 - Bull ownership transferred (all bulls)
- **Vaccination program – two rounds of vaccinations pre-weaning (minimum)**
 - *Recommended minimum protocol:*

PrimeVAC™ 34
PREMIUM
BY MERCK ANIMAL HEALTH

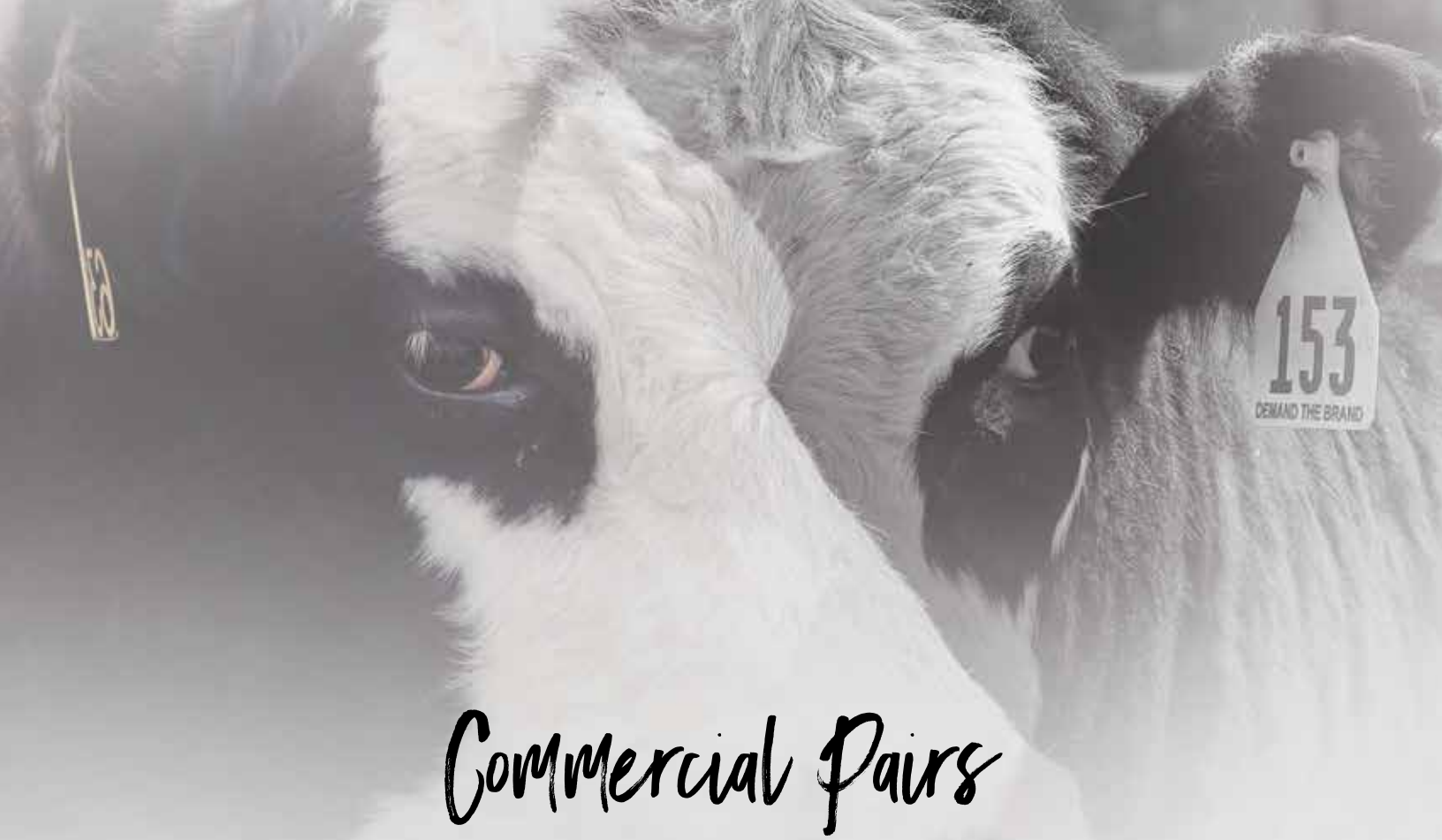
- **BQA certification**

BENEFITS

- **Genetic improvement tool**
 - **Sire EPD and profit index summary**
- **Added market exposure**
 - **Free listing at HerefordMarketplace.com**
- **Enrollment cost - \$3.00/hd.**
(verification + eID tag)

Look for this logo in Hereford bull sale catalogs to identify sires meeting the genetic requirements for the Hereford Advantage program.





Commercial Pairs

MATHIS RANCH – HAYDEN, NM

LOTS 101 - 130
30 BLK BALDY TWO -YEAR OLD PAIRS

•Dams are sired by Copeland & Sons Hereford bulls with calves at side sired by Angus bulls.

Marty, Erin, Dillon and Dawson Mathis

Marty - 575-914-8402





Learn more at
herefordtruth.com

THE BALD-FACED TRUTH ABOUT HEREFORD GENETICS

7%

Higher pregnancy
rates

\$51

More per cow,
per year

\$30

Advantage in feedlot
profitability

\$20

Advantage in feed
efficiency

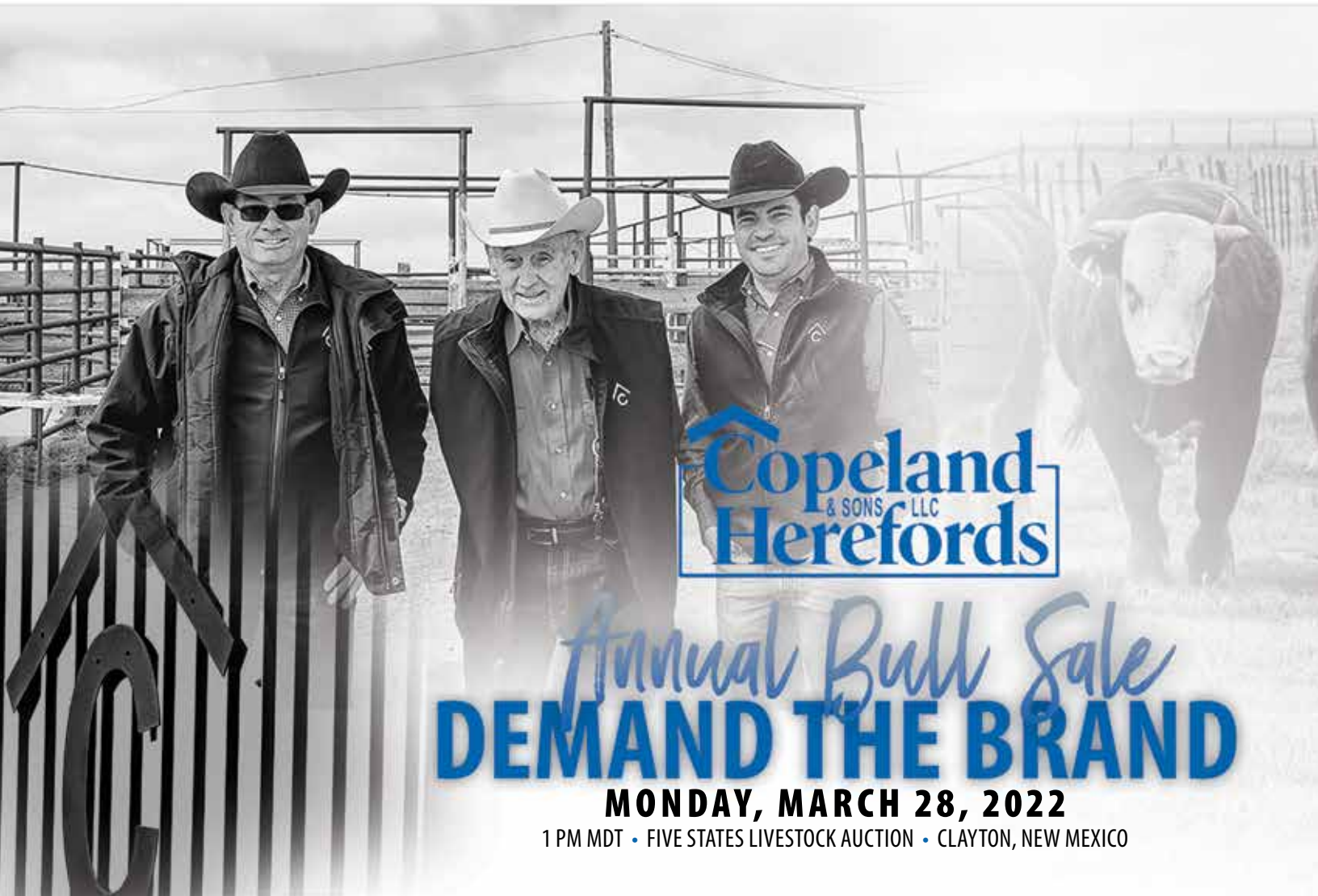
Hereford genetics maximize the value of your herd by leveraging traits such as fertility, feed efficiency, docility and feedlot profitability to your advantage.

*Compared to Angus-sired calves. Source: Daley, David A. and Early, Sean P. Impacts of Crossbreeding on Profitability in Vertically Coordinated Beef Industry Marketing Systems. American Hereford Association. Retrieved from <https://hereford.org/wp-content/uploads/2017/02/HarrisHeterosisReport.pdf>. 57100C06



PO Box 31684 • Edmond, OK 73003

catalog proudly designed by 
www.stephaniecronin.com • 402-682-2570



The logo for Copeland & Sons LLC features the name "Copeland & Sons LLC" in a blue, serif font, with "Herefords" in a larger, blue, serif font below it. The text is enclosed within a blue rectangular border.

Annual Bull Sale
DEMAND THE BRAND

MONDAY, MARCH 28, 2022

1 PM MDT • FIVE STATES LIVESTOCK AUCTION • CLAYTON, NEW MEXICO